

WebCenter Tasks Plug-in 24.11 Release Notes

Contents

1. Introduction	2
1.1. Highlights of 24.11 Release	2
2. Release Content	2
3. Licensing	2
4. Knowledge Base	2
5. Installation	2
6. Supported Platforms and Applications	2
6.1. Supported Software Operating Systems	2
6.2. Supported Applications	2
7. System Requirements	3
8. Supported Authentication modes	3
9. New features and enhancements in WebCenter Tasks plug-in 24.11	3
9.1. Rules in InDesign	3
10. Known issues and Limitations	4

1. Introduction

This document gives an overview of the new features in WebCenter Tasks plug-in 24.11 release. It only covers the changes since WebCenter Tasks plug-in 24.07 release.

1.1. Highlights of 24.11 Release

Following are the new features and enhancements offered in WebCenter Tasks plug-in 24.11 release:

- Added support for Rules in Adobe® InDesign®

2. Release Content

The Esko Software Suite for WebCenter Tasks plug-in 24.11 contains:

- WebCenter Tasks plug-in 24.11 installers.
- WebCenter Tasks plug-in 24.11 Release Notes (this document).

3. Licensing

WebCenter Tasks requires plug-in license. This license must be configured on WebCenter server.

4. Knowledge Base

You can use the Esko Knowledge Base to find articles containing tips and tricks to Esko related products here:

<https://www.esko.com/en/Support/Documentation>

5. Installation

You can download and install WebCenter Tasks plug-in from here:

<https://www.esko.com/en/support/downloadsandlicenses/free-software>

6. Supported Platforms and Applications

6.1. Supported Software Operating Systems

- Mac OS 12 (Monterey), 13 (Ventura), 14 (Sonoma), 15 (Sequoia)
- Windows 10, Windows 11

6.2. Supported Applications

- Adobe® Illustrator® 2023, 2024 and 2025
- Adobe® InDesign® 2023, 2024 and 2025
- Adobe® Photoshop® 2023, 2024 and 2025

7. System Requirements

Following ports are required for proper functioning of the plugin:

- Port 24681 for Adobe® Illustrator®
- Port 24682 for Adobe® InDesign®
- Port 24683 for Adobe® Photoshop®

8. Supported Authentication modes

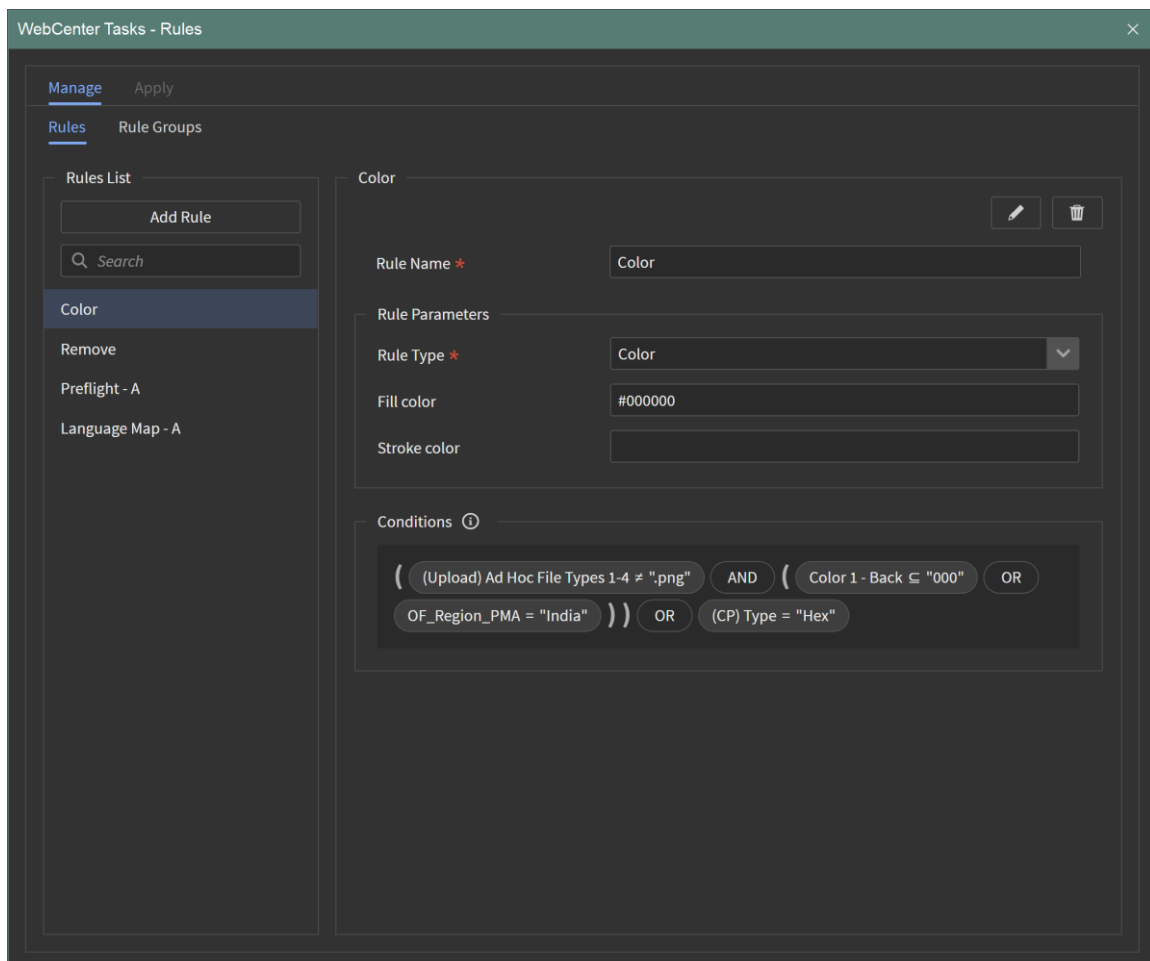
WebCenter Tasks plugin uses the WebCenter login page to authenticate the user. It therefore supports every authentication scheme that WebCenter supports from this page. Currently the authentication schemes are:

- Basic authentication – username and password
- LDAP
- SAML

9. New features and enhancements in WebCenter Tasks plug-in 24.11

9.1. Rules in InDesign

Rules are entities defined in an InDesign document that specify actions to be taken on specific or groups of tagged elements both before and after updating the content.



10. Known issues and Limitations

No issues or limitations.