

# WebCenter 18.1.1 Release Notes

## 1. Introduction

This document gives an overview of the new features and changes in WebCenter 18.1.1. It only covers changes since WebCenter 18.1 release.

If you are updating from a version before WebCenter 18.1, we advise you to read the release notes of all versions between your current version and WebCenter 18.1.1.

You can find these on the documentation page of WebCenter:

<https://www.esko.com/en/Support/Product?id=WebCenter&ver=18.1>

For System Requirements, see: [WebCenter system requirements - Product overview page](#).

### 1.1 Highlights of the 18.1.1 Release

WebCenter 18.1.1 is a minor release of the WebCenter platform. It contains however some very valuable functional improvements.

#### Live Text Search

In WebCenter 18.1.1, it is possible to create (saved) searches to locate PDF or Adobe Illustrator<sup>1</sup> documents with a given Live Text<sup>2</sup> string.

#### Search for all Referenced Versions of a Document

To make it straightforward to search for any version of a document that is referenced from another document through a Document Reference, a new search option “Version Used in” has been added to document search.

#### Persistent Search selection

To make it simpler to select a list of documents to e.g. include in a new project, the search result selection has been made “persistent” so that it survives reload of search results caused by paging, changing of criteria in the search panel or changes to search result layout options. A handy panel with the current selection ensures that the current selection is always easy to inspect before an operation is started.

#### Focus Layout and Viewer Dashboard block

The new search result focus layout option reserves a large portion of the screen for a single search result to make it possible for the user to inspect the individual search result items without opening a document details or viewer window. Used together with persistent selection and the new Viewer dashboard block, the focus layout

---

<sup>1</sup> The Live Text search feature is only available for non-encrypted PDF documents and Adobe Illustrator documents saved with a PDF compatible part.

<sup>2</sup> The term “Live Text” is used for PDF text that is not “outlined” i.e. converted to vector graphics.

provides a very efficient way for the user to click through a set of search results and decide which ones to include and which ones to omit for a specific operation.

**Improved Packaging Content Management Table functionality**

To make it more efficient to work with tables in the WebCenter's Packaging Content Management (PCM) module, a list of improvements has been added. It is now simpler to Add, Remove, Reorder, and Hide Columns and/or Rows to PCM tables and to output PCM table previews to PDF format reports.

Note: The availability of some of the mentioned functionality is restricted to optional modules in WebCenter.

## 2. Contents

1.	Introduction .....	1
1.1	Highlights of the 18.1.1 Release .....	1
2.	Contents.....	3
3.	Release Content.....	4
4.	Licensing and IT Requirements.....	5
4.1	Licensing.....	5
4.2	IT Requirements.....	5
5.	Knowledge Base.....	6
6.	New and changed features in WebCenter 18.1.1 .....	7
6.1	Search.....	7
6.1.1	Search Live Text in Document.....	7
6.1.2	Search for non-Latest Document Versions .....	8
6.1.3	Program Management: Drilldown Search .....	9
6.1.4	Persistent Selection for Search Results .....	9
6.1.5	Focus Layout in Search Results .....	10
6.1.6	Layout Toggle Buttons in Table Header .....	11
6.2	Dashboards .....	11
6.2.1	Viewer Block.....	11
6.3	MediaBeacon Connection.....	11
6.3.1	Expand ZIP archive documents pushed MediaBeacon.....	11
6.3.2	Advanced Workspace Configuration for MediaBeacon Document Source .....	12
6.4	Attribute Category Improvements.....	12
6.5	Packaging Content Management.....	12
6.5.1	Performance Enhancements in Table Content Bulk actions .....	12
6.5.2	Add or Remove columns / Rows in Grid Layout .....	12
6.5.3	Reorder Table Rows and Columns .....	12
6.5.4	Hide and Show Rows and Columns.....	13
6.5.5	Bulk Approval .....	13
6.5.6	Export to GS1 and XLIFF for tables.....	13
6.5.7	Table Content Preview Report.....	13
6.6	Performance .....	14
6.6.1	Document Reference database views .....	14
6.6.2	Importing large Attribute Categories.....	14
6.7	SAML Plugin version 1.1.5.....	14
7.	Known issues and limitations .....	14
7.1	First Search Index rebuild .....	14
7.2	Pasting Images in Rich Text Attribute .....	14
7.3	List Import .....	14
8.	Additional Upgrade notes.....	15
8.1	Cleaning up old search indexes.....	15
9.	Solved customer issues.....	16
9.1	List of Resolved Customer issues in WebCenter 18.1.1 .....	16

### 3. Release Content

The Esko Software Suite for WebCenter 18.1.1 contains:

- WebCenter 18.1.1 (November 2019) WebCenter DVD that includes WebCenter 18.1.1 and ArtiosCAD 18.1 Enterprise installer <sup>1)2)3)</sup>
- Platform 18.1 (March 2019) Engines Software Installation DVD with Automation Engine 18.1 or later.
- WebCenter Release Notes (this document; also present on the installation DVD)
- ArtiosCAD Enterprise and WebCenter Documentation (PDF format)

- 1) *An update to ArtiosCAD 18.1 Enterprise build 1456 or later is mandatory for WebCenter 18.1.1 (on the application server only).*
- 2) *An update of the License Manager (installed from the ArtiosCAD installer) is mandatory when updating from WebCenter 18.1 or older.*
- 3) *Installation of boards and ArtiosCAD defaults is mandatory to work correctly with CAD documents in WebCenter.*

## 4. Licensing and IT Requirements

### 4.1 Licensing

WebCenter 18.1.1 requires the WebCenter 18.1 licenses. You need to install the new ArtiosCAD 18.1 and the new License servers, local License Manager and Network License Manager.

### 4.2 IT Requirements

The responsive WebCenter UI is optimized to work on the latest generation of all major browsers (mobile and desktop): Internet Explorer, Edge, Chrome, Firefox, and Safari. Internet Explorer 10 and older are not supported for use with WebCenter 18.1.x.

Read also the Installation Guide and System Requirements. See <https://www.esko.com/en/support/product?id=WebCenter>.

## 5. Knowledge Base

You can use the Esko Knowledge Base to find articles containing tips & tricks for Esko software products.

Esko Knowledge Base (all products):

<https://www.esko.com/en/Support/Documentation/>

All articles related to WebCenter:

<https://www.esko.com/en/Support/SearchResult?product=WebCenter&Keyword=WebCenter>

To limit your search, edit the Knowledge Base Search field to contain both WebCenter and your own criteria. The special keywords AND and OR can be used with brackets and wildcard characters (? and \*) to refine the search.

## 6. New and changed features in WebCenter 18.1.1

### 6.1 Search

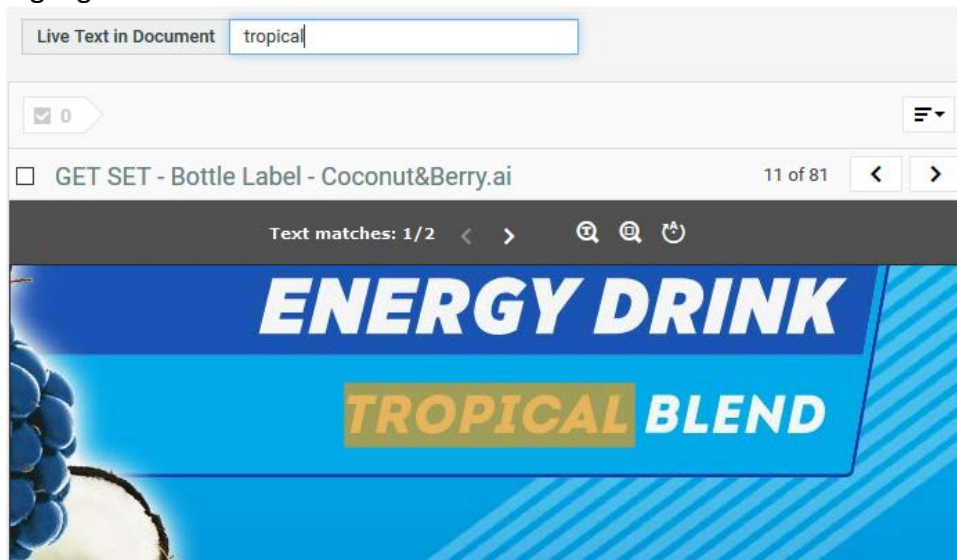
#### 6.1.1 Search Live Text in Document

In WebCenter 18.1.1 it is possible to search for the text inside a document (ai or pdf format only supported) using the **Live Text in Document** field in the Document Search.

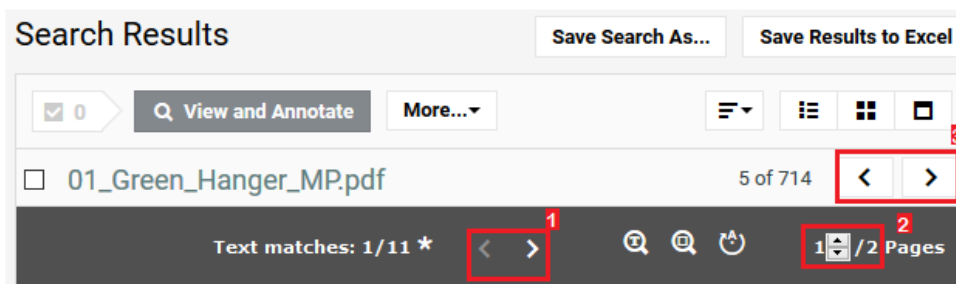
An option has been introduced in the search crawler configuration to enable or disable this field; it's deactivated by default. When this option is selected, **Live Text in Document** field is enabled in the **Document** Search and search results show the documents which contains the text searched for.

**Note:** On systems with large number of PDF documents, it is highly recommended to only turn on the **Index Live Text in Documents** feature in the Search Crawler Setup page after the initial search rebuild is fully completed. The Index Live Text in Document feature will make WebCenter inspect all PDF documents in the system and this can take significant time – especially on the first execution (PDF text content will be cached for later rebuilds of the search index).

When the search results are shown in the new focus layout (see “6.2.4 Focus Layout in Search Results” below) with a viewer block, the matches for the searched text are highlighted in the document.



You can navigate through the matches to see where the searched text occurs.



1. Navigate through the text matches within the document
2. Navigate through the pages within the same document
3. Navigate to the next document in the search results

The number of instances of the text occurring in the document is shown in the header. When multiple pages contain a match for the searched text, it is indicated with an asterisk and navigating through the matches will also navigate through the different pages. By hovering over an arrow, you can also see the number of pages containing a match.

Search for **Live Text in Document** only works on left to right text. For example, text in Arabic or Hebrew is not supported yet.

### 6.1.2 Search for non-Latest Document Versions

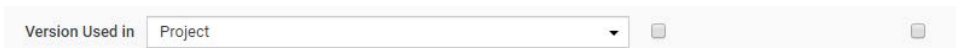
When searching for documents that are referenced from other documents through a document reference, previous versions of WebCenter was only able to return versions of documents that were also linked into a project or were the latest version of a document revision.

In WebCenter 18.1.1, we added a new option to also add these referenced earlier versions to the search index.

To enable this feature, Admin users must select **Index all currently referenced Document Versions** in the **Search Crawler Setup** page. The index will be rebuilt once this option has been changed in the setup.

Turning on this option is only useful if you have older versions of documents which are referenced. This can happen if you are using a document reference with the "Selected Version" option.

When this option is turned on, the **Document** search setup page has a new field, **"Version Used In"**:



The default value is Project which returns the same results as in earlier versions of WebCenter. Two new options are added namely **"Document Reference only"** and **"Document Reference or Project"**.

The "Document Reference only" option limits the search to referenced document versions that are not the latest in any Project or Revision, while the "Document Reference or Project" returns any version in a project or referenced by any other document.

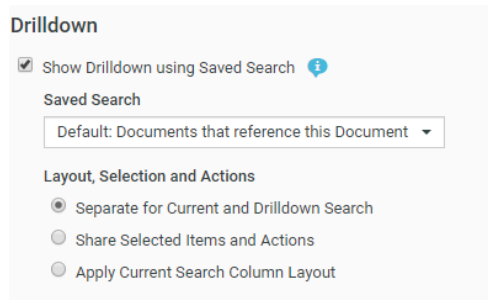


**Known limitation:** only versions referenced from a document reference in documents are taken into account. If a version is only referenced from a document reference in a project, it is still not considered.

### 6.1.3 Program Management: Drilldown Search

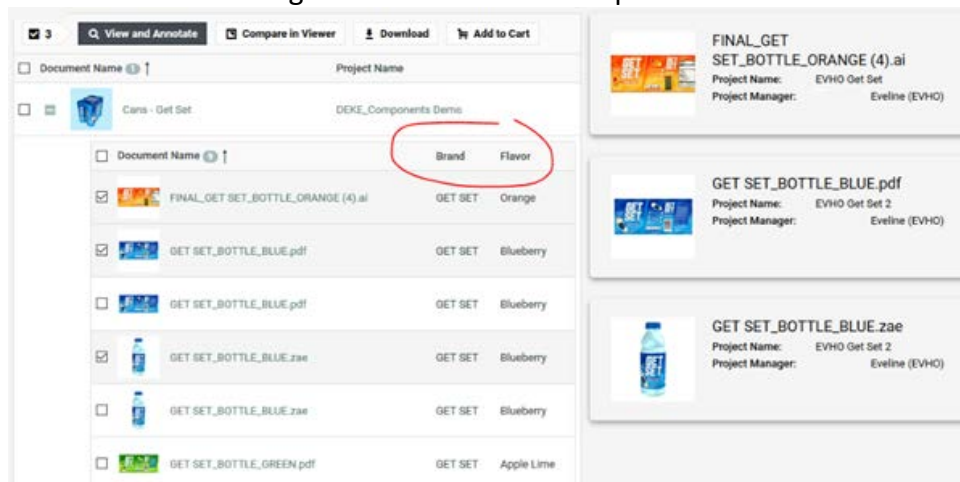
When using configuring a search with drilldown in WebCenter 18.1.1 a new option has been introduced: **“Share Selected Items and Actions”**. Admin users now have three options for the **Layout, Selection and Actions** when setting up drilldown for search results.

**Note:** These options are available, when a search of the same type is selected (document search inside a document search, project search inside a project search).



When the **Share Selected Items and Actions** option is chosen, the selected items and actions are shared, but the tables are kept separate allowing you to perform one action across levels. However, different information (different columns) can be shown for the different levels of the search results. This can be useful if the levels in the drilldown represent different types of documents and have different metadata.

For example, the drilldown documents have both the **Brand** and **Flavor** attributes while the main search only shows the Project Name. Some of the documents of the drilldown search are selected and the selected drilldown documents show up in the details block on the right and the actions on top become available.

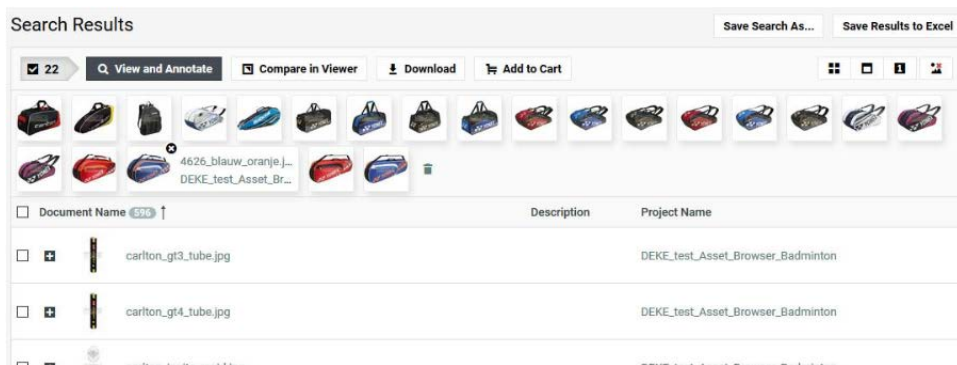


### 6.1.4 Persistent Selection for Search Results

Search Results now have "persistent" selection for Document and Project Search. This means, that the selection is remembered when you filter, sort, facet or navigate

to the next page(s) of the results. Persistent selection allows you to select all the documents you need even if you cannot get them all together on a single result page.

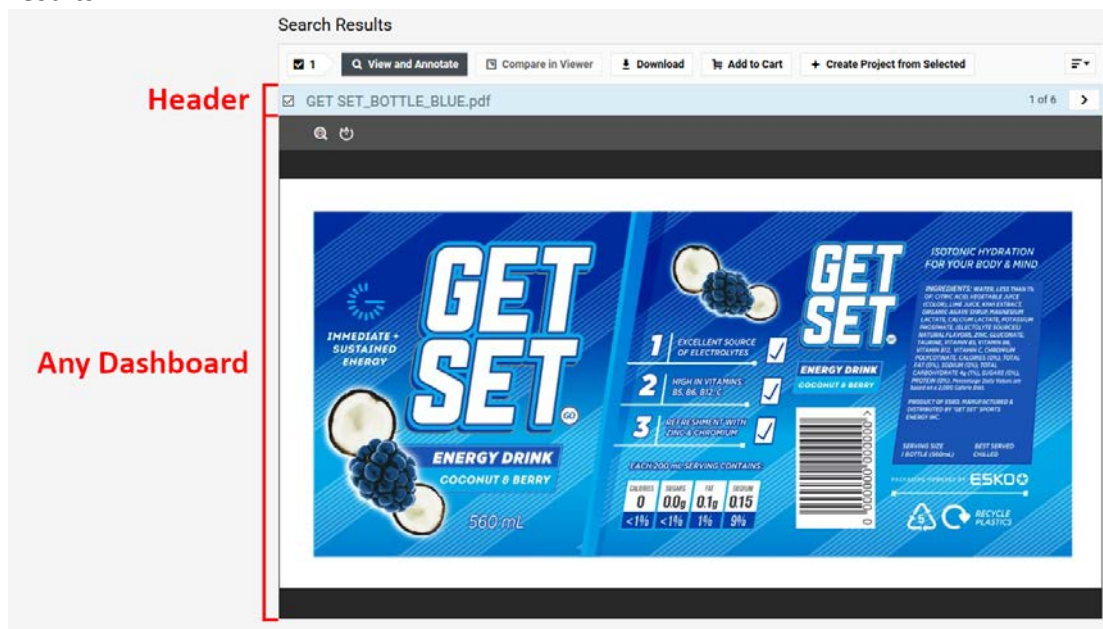
The number of items selected is clearly indicated, and you can click the counter to see the actual selection as small thumbnails.



### 6.1.5 Focus Layout in Search Results

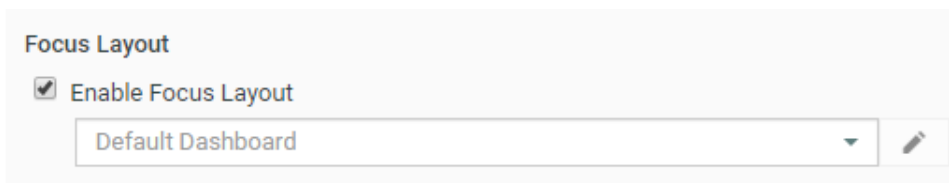
Focus Layout is a new type of layout for Search Results. Unlike other layouts in Search, this layout will only show one item at a time. Each item will be shown as a dashboard when browsing through the items.

Focus layout can give the user a more detailed view of a document before selecting the document to perform an operation on it. For a document search for example, the default configured dashboard contains a viewer block (see also “6.3.1 Viewer Block”). You can view the actual document before selecting it from the search results.



Although any dashboard can be used, in the image above the dashboard contains a viewer block. Step through the documents with the arrow buttons in the right side of the header, select a relevant document by clicking the header or the checkbox.

To configure this option, navigate to **Show Result Layout Options** in the **Search** page.

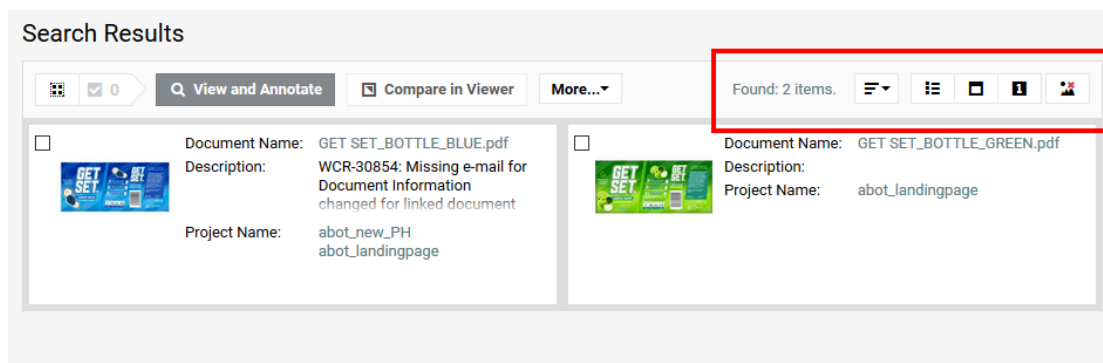


For Document searches, the Focus Layout is enabled by default but for the Project and Task searches, this option must be enabled by an admin user. When enabling the Focus Layout, a dashboard can be selected from the list of existing Dashboards or a new Dashboard can be created.

### 6.1.6 Layout Toggle Buttons in Table Header

In WebCenter 18.1.1, for Search Results, the buttons that allow the user to switch layout moved to the top of the page.

By moving the information from the footer to the header of the table, WebCenter can completely hide the footer if there is only one page of results. Additionally, that way you don't have to scroll down to the bottom of the page just to switch layout.



## 6.2 Dashboards

### 6.2.1 Viewer Block

A new Viewer block is available for **Document** and **Task/Approval** Dashboards. Viewer in the dashboard is available with limited functionality including zoom to fit and rotate.

When you search for the live text in the Document search and if you have a viewer-block, the text you are searching for is highlighted in the document.

## 6.3 MediaBeacon Connection

### 6.3.1 Expand ZIP archive documents pushed MediaBeacon

A new option was added in the "Upload to Asset Management System" workflow node, when enabled it automatically expands ZIP archive documents that are pushed to MediaBeacon.

### 6.3.2 Advanced Workspace Configuration for MediaBeacon Document Source

To allow optimizing the user interface of the MediaBeacon search window shown for MediaBeacon document sources, an option was added to call a custom “redirect” workflow in MediaBeacon with smart-name enabled parameters rather than using a fixed workspace.

When configuring the MediaBeacon Asset Management document source, toggle from the Workspace to the Workflow option to specify the new parameters.

## 6.4 Attribute Category Improvements

We have improved the Attribute Category to become more robust and render efficiently in all locations in WebCenter including Project Creation and Task Execution pages.

## 6.5 Packaging Content Management

### 6.5.1 Performance Enhancements in Table Content Bulk actions

In WebCenter 18.1.1, bulk actions in the table content like adding, removing or approving elements are optimized.

### 6.5.2 Add or Remove columns / Rows in Grid Layout

Rows can be added easily or deleted now with the Row headers available in the Grid layout. As earlier, this can be done only by the users who have Content Manager or Editor permission on that table document. Row can be added above or below the selected row using the options available in language header.

Similarly, the columns can be added to the left or the right of the selected column using the options available in language header.

### 6.5.3 Reorder Table Rows and Columns

Rows and columns in the Table document can be reordered by drag and drop. Resize the width of a column by using the column resize handler.

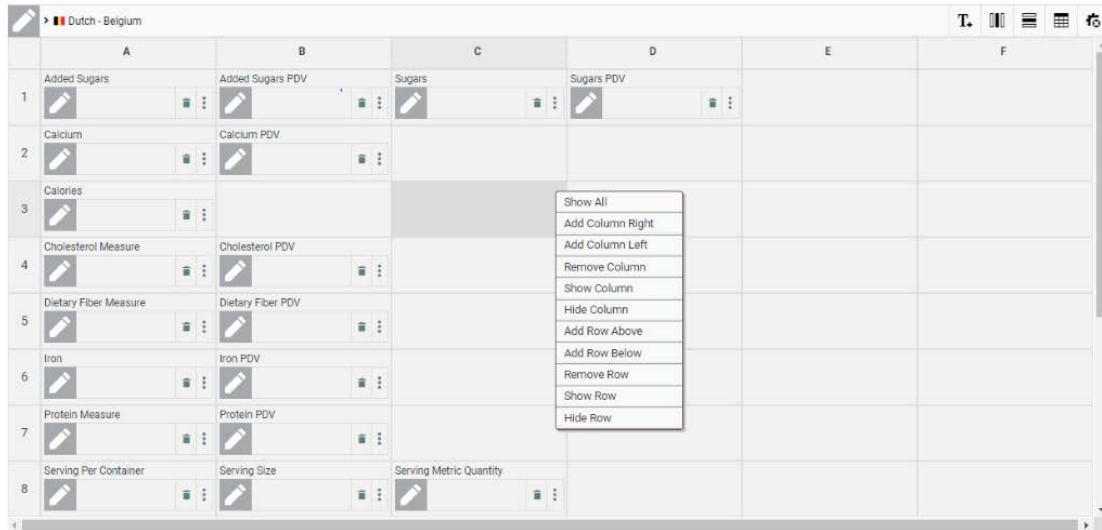
### 6.5.4 Hide and Show Rows and Columns

Rows in the Table document can be hidden by selecting any cell in the Row and selecting the **Hide Row** option in the language header. To show the hidden row, Select the Row and choose the **Show Row** option in the language header.

Show and Hide columns also function similarly by using the Show Columns or Hide columns in the language header.

**Note:** These functions can also be initialized by Right Click action on the table.

//add new screenshot//



### 6.5.5 Bulk Approval

The language header has an option to bulk approve all the visible elements in the table document. When the hidden row or column with elements in draft state is made visible then the status of the language is changed to draft.

### 6.5.6 Export to GS1 and XLIFF for tables

When the contents of the table document are exported to GS1 or XLIFF, only the visible elements in the table are exported. Any elements present in hidden rows or columns are ignored for export. This functionality works similarly in **Export to GS1** and **Export to XLIFF** WF nodes.

### 6.5.7 Table Content Preview Report

A report in pdf format can be downloaded for the preview of the table content document for all types of layout. This can either be downloaded in Text Information of the table document or along with the Attributes Category report. **Run Report** WF node generates Attribute Category report that has NFT report also. WF node cannot generate only NFT report.

## 6.6 Performance

### 6.6.1 Document Reference database views

An extra index has been added to speed up select queries in database views around document reference and their properties.

### 6.6.2 Importing large Attribute Categories

An extra index has been added to speed up update queries used during import of large attribute categories.

## 6.7 SAML Plugin version 1.1.5

A new version of the SAML plugin is included in WebCenter 18.1.1. This version has some security and other small improvements.

## 7. Known issues and limitations

### 7.1 First Search Index rebuild

A Search Crawler re-index has to be compulsorily performed after upgrading to 18.1.1 and is best planned during off-hours (e.g. in a weekend) as significant performance impact is expected during the index rebuild.

If the system contains large number of Projects, Document and Tasks, index rebuild is expected to be longer. During the index rebuild, only partial search results will be available, and performance impact is expected for all users. Please make sure to schedule the time of the update to minimize the negative effect of the index rebuild. Also note that the first search index rebuilds after upgrading to 18.1.1 from 16.1 or earlier can take considerably longer than a standard index rebuild as it might need to regenerate all CAD file related search perspectives in the Filestore.

**Rebuild Index** option in the Search Crawler Setup page can be used to initiate the rebuilding of the search index manually.

**Note:**

If re-indexing is not performed after the upgrade, Search might return wrong results or show no results at all.

### 7.2 Pasting Images in Rich Text Attribute

When an image is pasted into Rich Text Attribute by copy- paste action, the image is pasted twice. This issue is browser dependent and some browsers does not have this issue.

### 7.3 List Import

When importing lists, part of the list processing is now done asynchronously. As a result, the correctness of imported lists should be checked by inspecting the list detail (from the Lists page in the Admin section) after the processing completes. The list processing can continue some minutes after the import itself completes.

## 8. Additional Upgrade notes

### 8.1 Cleaning up old search indexes

If upgrading from WebCenter 16.0 or older, some potentially big folders will be left on the file system which will no longer be used. After WebCenter 18.1 is installed these folders can be deleted to save space. Only folders having a name starting with "00001\_" in the search index directory (usually "C:\Artios\WebCenter\searchindex") should be removed. All the folders starting with "00000\_" should be kept.

Name	Date modified	Type	Size
00000_0000000001	9/03/2017 17:17	File folder	
00000_0000000001_taxo	9/03/2017 10:27	File folder	
00000_0000000002	9/03/2017 17:21	File folder	
00000_0000000002_taxo	9/03/2017 10:28	File folder	
00000_0000000003	9/03/2017 17:21	File folder	
00000_0000000003_taxo	6/03/2017 18:01	File folder	
00001_0000000001	28/02/2017 16:01	File folder	
00001_0000000002	28/02/2017 16:01	File folder	
00001_0000000003	28/02/2017 16:01	File folder	
00001_0000000004	28/02/2017 16:01	File folder	
00001_0000000005	28/02/2017 16:01	File folder	
00001_0000000006	28/02/2017 16:01	File folder	
00001_0000000007	28/02/2017 16:01	File folder	
00001_0000000008	28/02/2017 16:01	File folder	
00001_0000000009	28/02/2017 16:01	File folder	
00001_0000000012	28/02/2017 16:01	File folder	
00001_0000000013	28/02/2017 16:01	File folder	
00001_0000000014	28/02/2017 16:01	File folder	
00001_0000000016	28/02/2017 16:01	File folder	
00001_0000000017	28/02/2017 16:01	File folder	
00001_0000000018	28/02/2017 16:01	File folder	
00001_0000000019	28/02/2017 16:01	File folder	
00001_0000000020	28/02/2017 16:01	File folder	

## 9. Solved customer issues

### 9.1 List of Resolved Customer issues in WebCenter 18.1.1

JIRA Number	CS Number	Custom field (Release Notes)
WCR-34364	CS01144852	Fixed issue with (Saved Search) Counter Blocks not working in a Search if the Saved Search they point to has SmartNames.
WCR-34365	CS01144850	Workflow Engine could get stuck during starting of workflows (same as hotfix 201903011 for 18.1)
WCR-34368	CS01145461	This fix allows customers to specify the maximum amount of events loaded from the database. This can help in situations where there are a lot of events in the audit trail of a specific project that could cause WebCenter to slow down when the audit trail is being loaded. The maximum limit can be set by using the Java VM argument: esko.wcr.history.limit.
WCR-34437	CS01149042	The Simplified my work checkbox is wrongly migrated in the new dashboard in 18.1. This is an issue with the dashboard migration script. The migration of the My Work pages in the database does not happen on the time of upgrading WebCenter, but the migration is done when the user loads his My Work page. Only when the user saves his My Work page the migrated version is saved in the database. This means that if we would install a hotfix which fixes the migration script, the issue will be fixed for all the My Work pages that were not yet saved after the upgrade.
WCR-34351	CS01143255	Fix customization of menu color not correctly being applied to login page
WCR-34363	CS01144704	Excel files will not open in viewer if script was multi-page and Excel file was left in view dir root folder
WCR-34952	CS01158490	Importing a Project/Template in WebCenter 18.1.1 once again imports the autonaming settings configured in the Project creation tab.
WCR-34508	CS01150443	In case a document template is part of the document source configuration for a BOM (project creation or BOM section), the attribute category from the template document might not be correctly assigned to the new document.
WCR-35120	CS01158493	Made the footer in annotation overview for multi paged documents read-only
WCR-35116	CS01160491	When user is a project creator, he can create child projects when he has change permissions in the parent
WCR-35142	CS01160967	Fixed regression issue where loading of attributes in a category got cut off at 999 attributes.
WCR-35115	CS01159876	Fixed issue where Document Templates were sometimes ignored when importing a Document from DAM.
WCR-35186	CS01151341	Fixed an issue that caused the ViewServer.jar artifact to go out of memory which resulted in an unusable WCR Viewer.
WCR-34308	CS01133527	Performance of Import Dynamic Graphics node is improved.
WCR-34702	CS01148402	In the viewer, text content widget will show the content based on the selected document version
WCR-35303	CS01166870	When using different views, you cannot go back to the defaults view



## WebCenter 18.1.1 Release Notes

		When landing on an attributes view (non-default), and the view is in the menu, take this as the landing page
WCR-35243	CS01164792	Fixed issue where selection in a child search in a document source with a drill down saved search where the "apply column layout" is turned off was not working. Columns needed to be merged for the selection in the child search to work.
WCR-34784	CS01149910	Spanish Braille codes were incorrectly read
WCR-34434	CS01148518	Code 39 code was wrongly read as Code 32
WCR-35588	CS01172585	The document name will once again be a valid link to the document in WebCenter.
WCR-35603	CS01170974	When using a Sync Workflow node with a connection with e.g. a non-JMF setup, the node could keep hanging because AE would never call the return URL.
WCR-35593	CS01170907	While resolving smartnames during content save operation, the spaces between two smartnames will be intact.
WCR-34812	CS01151040	Adding backend security measure to prevent saving of task predecessor/successor cyclic dependencies
WCR-35141	CS01161168	Annotation page will now show thumbnails also if the Check and Register process ended with a Warning state
WCR-35082	CS01159506	When using different views, you cannot go back to the defaults view When landing on an attribute view (non-default), and the view is in the menu, take this as the landing page
WCR-33891	CS01128802	Added possibility to do Text scraping in custom view file generation. If this is done, the viewer will automatically enable the text selection tools.
WCR-36287	CS01185173	This fix will now solve all the line break issues
WCR-34867	CS01155244	WF Update Table/Text content node didn't have functionality to inherit SmartContent itself. Now WF is extended to inherit SmartContent. These nodes will still not be able to set SmartContent itself using "Values/Languages" tab directly.
WCR-34331	CS01139569	Improved behavior for task scheduling in a Task Execution Form view with visibility rules (First Task Starts / Last Task Ends).
WCR-36313	CS01185803	Extended the proxy between WebCenter and CHILI to allow CHILI 5.6 and up to work.
WCR-35288	CS01165843	Task execution page does no longer scroll to the Discussions block automatically.
WCR-34433	CS01148458	Text Content document type will now respect Approval Settings done on the document. Every change in document is considered as new document upload, and if there is already ongoing approval, based on settings, approval should continue/stop/restart. This was not available before.
WCR-35853	CS01177577	Starting a task from a menu action with skipping the task execution page did not work some of the times (timing issue).
WCR-36661	CS01191687	Fixed printing pages on WebCenter that have more than 1 page on Firefox
WCR-36670	CS01192003	When clicking the 'Assign to me' button at the task execution page, the current user got selected, but the Save button was not available.
WCR-34436	CS01148113	When using Safari, downloaded file name gets cut off to 90 characters. Previously, if a file name became too long in Safari, it was downloaded with file name "doprojectdocsations.jsp"

## WebCenter 18.1.1 Release Notes

WCR-34126	CS01132400	Previously, texture names were used to detect if a given texture is a diffuse texture (By convention Esko texture files have specific formatted names). Now the type of texture from the Collada file is checked.
WCR-36601	CS01180647	WebCenter will now correctly add attribute and other project specific data to downloaded MFG reports
WCR-36836	CS01189764	Fix Global Vision annotations not showing up in the widget when starting the viewer
WCR-35981	CS01173094	A lot of XDrops on a page had a performance impact, even when they were not opened (or hidden).
WCR-36613	CS01161546	WebCenter could be hanging on a deadlock situation between the Task Scheduler and a DB transaction.
WCR-35272	CS01164024	When importing an exported XML/ZIP, the import has been optimized because attributes that are not changed, will not be marked as being changed.
WCR-36745	CS01193080	Fix generating a 3D model of an artwork with finishing profile if the artwork does not have a file extension in its name.
WCR-36360	CS01187278	Fixed issue with searches running a lot slower than last WebCenter version when the project due date field is visible.
WCR-34334	CS01141814	When uploading a document using AE - the document references that uses the document, will get an updated value
WCR-35849	CS01177448	There was an issue where the workflow fails on a Start Approval Stage for a stage that already happened on a previous document version, but in a different order. So for example if on the first document version, the stage in question was the second stage on the document, and for the second document version, the stage was the first stage on the document version.
WCR-35363	CS01167142	Cans are shown transparent in the 3D viewer.
WCR-37138	CS01199728	Fix WebCenter login session not being destroyed when opening viewer through OpenViewer.jsp and parameter closesessionafter=1
WCR-36746	CS01191483	After deleting approval stages with linked due date attributes, they could come back when changing those attributes.
WCR-37202	CS01200681	When using landing page with dashboard, system was not listening to the user preferences.
WCR-37114	CS01198174	Improved stability of document searches, when user logs out
WCR-36075	CS01176581	ManageDocApproval.jsp SDK call was extended by "allowconditionalapproval" parameter. Default value is "1" (allowed).
WCR-35242	CS01164171	Improved the due date calculation mechanism in WebCenter when considering working days.
WCR-37285	CS01202603	Fix required attributes not being respected when approving a document within the viewer as a certain role. If required attributes were not filled out, then approval is now no longer possible for.
WCR-37279	CS01197420	If the resolved text is outdated when compared with the text in referred doc version, then the warning will appear in the element on loading the basic view page itself. When the outdated resolved texts are resolved again or removed then the warning will disappear.
WCR-36851	CS01196999	Workflow managed approval: When rejecting an approval stage and when uploading a new version and when stepping back in the process, the first stage was always

## WebCenter 18.1.1 Release Notes

		started no matter which stage was put to be started by the workflow.
WCR-37292	CS01202521	Improved stability between Tomcat and JBoss when network issue occurs
WCR-37234	CS01199342	After installing hot-fix 201903048, when importing (or exporting) workflow, the conversion from the named objects (e.g. attribute names) to the IDs of the target system is not happening (or vice versa). This results in (corrupt) not-executable workflows.
WCR-37304	CS01168899	When uploading a document using the pilot and when WCR and AE are NOT in the same LAN, the document description does NOT get updated when creating a new version of the document.
WCR-36698	CS01187875	Session can no longer timeout when uploading large documents through Multi Upload Tool
WCR-37256	CS01199159	In WebCenter 18.1, Search could become quite slow for users which have a very large to-do list. (e.g. by adding such a user to many groups)
WCR-35231	CS01163643	Upgraded the version of Summernote to 0.8.12 because of an issue introduced in 0.8.11. However, we know that now, when the user pastes an image, it will be pasted twice, depending on the browser. This is an issue introduced in Summernote 8.12. We cannot revert to an earlier version of Summernote than 8.11, as we rely on some of its functionality. We agreed that a double paste of an image is better than no paste at all, as it is less cumbersome to press backspace than to get the image in there another was.
WCR-37251	CS01202942	The Font Detection tool did not give the same results as Acrobat and ArtPro+ when text had horizontal scaling applied
WCR-36587	CS01180118	Previously it was possible to run into an infinite loop of Attribute Category repainting when a document in Documents Table was duplicated and it had among its own attributes a document reference and that one was involved in an Attribute Category Rule and/or Button. This is not possible anymore.
WCR-36265	Internal Issue	Approval Search had an issue with visibility for users invited only via a group to a project. Sometimes Approval Search does not find the Approval Tasks for those users in such projects. This is fixed in 18.1.1.
WCR-34372	Internal Issue	When uploading a list, the import of the data happens asynchronous now. This means that the response comes back immediately as the document is uploaded, but the update of the list is still ongoing. The document is checked out by admin as long as the list is being updated and we indicate in the list details that the update is ongoing.