

# WebCenter Connector 16.1

What's New?

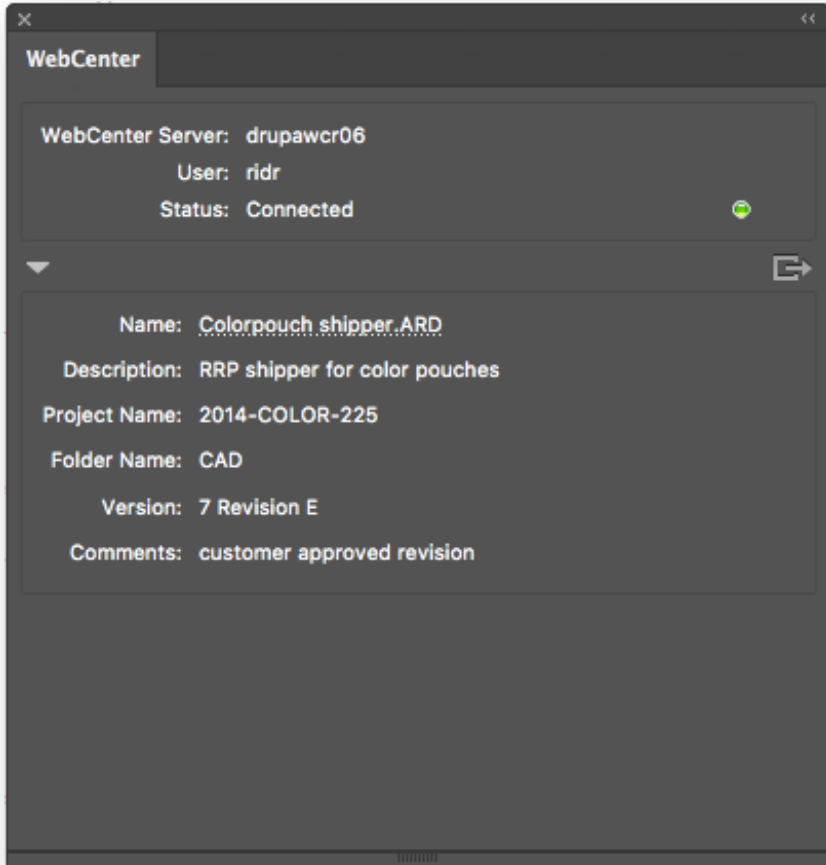
**Richard Deroo**

**Product Manager, Structural Design**

**April 2017**

## WebCenter Connector 16.1 – What's New Summary

- WebCenter palette to view structural design document information
- User configurable preferences for graphic file downloads and cache clean up
- Support for proxy servers
- Option to choose visible columns in WebCenter Connector browser
- WebCenter Connector browser displays document count for every folder



## WebCenter Palette

- View WebCenter document information for structural design files
- Simple access to WebCenter server connectivity
- Quick document hyperlink brings you into WebCenter with one-click
- Valuable document information at a glance

## WebCenter Connector Preferences

WebCenter Connector Preferences

Download Location:

AI Packages: /Users/ridr   
(\* .zip)

Graphics Files /Users/ridr/Downloads/Esko/WebCenter\_Files   
(\* .ps, \*.eps, \*.psd, \*.bmp, \*.jpg, \*.bmp, \*.tif)

Auto clear cache when the size exceeds 100MB  
(\* .ard, \*.zae, \*.chp, \*.pdf)

Network Settings:

Automatically detect system proxy settings

Use manual proxy settings

Proxy Server: protocol://machine : port

Proxy server requires password

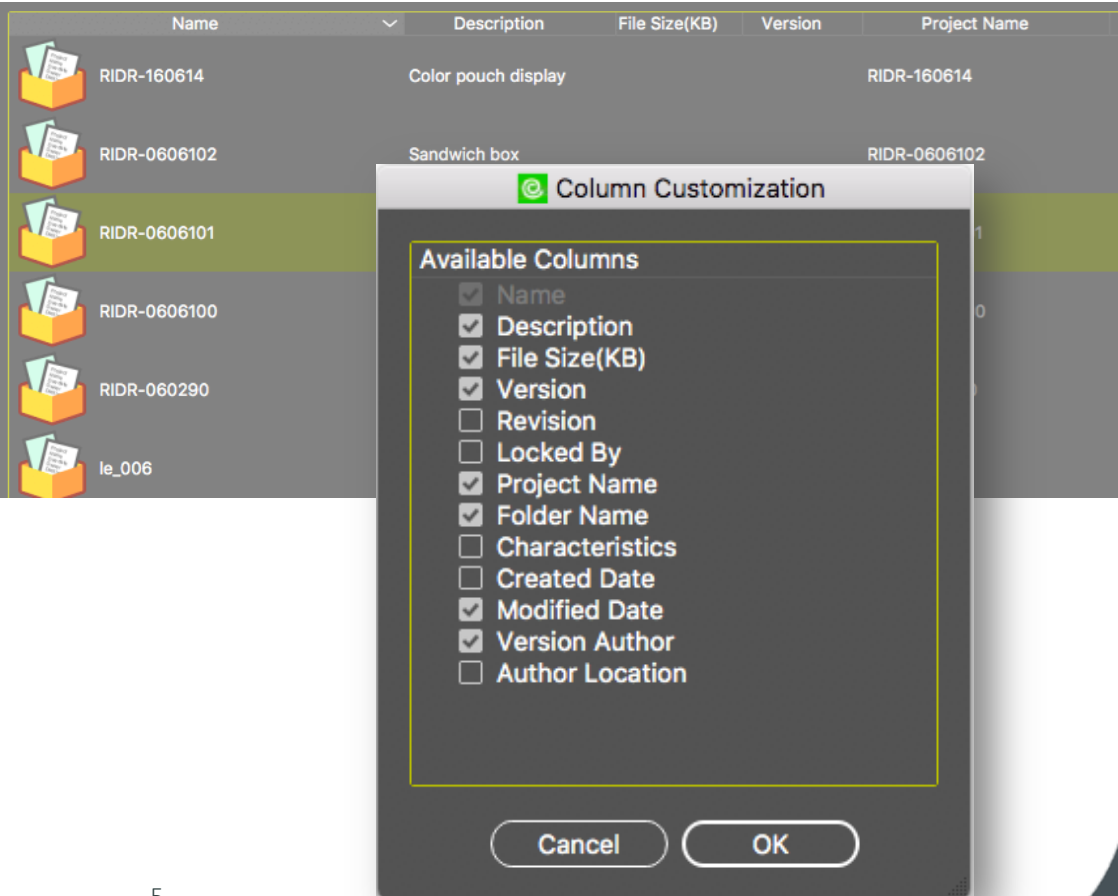
Username:

Password:

- User selectable download location for graphic files
- Auto clean up of cached files protects from excessive disk space usage
- Network settings available to support Proxy Servers

## Customize Column View

- User selectable column settings
- Show only the columns you need
- Reorder column headings with simple drag



ESKO 