

WebCenter Connector 21.11

User Guide

10 - 2021

Contents

1. Copyright Notice.....	3
2. WebCenter Connector Plug-In.....	5
2.1. Starting WebCenter Connector.....	5
2.2. Browser window elements.....	5
2.2.1. The Browser Toolbar.....	6
2.2.2. Search Controls.....	7
2.2.3. Document Display Control.....	8
2.2.4. Paging Controls.....	9
2.2.5. Tree Control.....	9
2.2.6. Customizing the Columns in the Document List.....	11
2.3. Using the WebCenter Palette in Adobe Illustrator.....	12
2.4. Searching.....	13
2.4.1. Using a Saved Search.....	13
2.5. Opening or Placing a Document from WebCenter.....	14
2.5.1. Working with Annotations.....	15
2.6. Opening or Placing an Earlier Version of a Document.....	17
2.7. Opening a Document in a Web Browser.....	18
2.8. Exporting a Native Adobe Illustrator Document to WebCenter.....	19
2.9. Exporting an Adobe PDF document to WebCenter.....	21
2.10. Exporting an Esko PDF document to WebCenter.....	22
2.11. Structural Design Files and WebCenter.....	22
2.11.1. Exporting Structural Designs to WebCenter.....	22
2.11.2. Replacing a Structural Design from WebCenter.....	22
2.11.3. Exporting Selected Objects to ArtiosCAD File in WebCenter.....	23
2.12. Exporting as a CHILI Package.....	24
2.13. Setting WebCenter Connector Preferences.....	25
2.13.1. Setting the Download Location for Adobe Illustrator Packages and Graphics Files.....	25
2.13.2. Automatically Controlling the Size of the Download Cache.....	26
2.13.3. Configuring Network Proxy Support on the Apple Macintosh.....	26

1. Copyright Notice

© Copyright 2021 Esko Software BV, Gent, Belgium

All rights reserved. This material, information and instructions for use contained herein are the property of Esko Software BV. The material, information and instructions are provided on an AS IS basis without warranty of any kind. There are no warranties granted or extended by this document. Furthermore Esko Software BV does not warrant, guarantee or make any representations regarding the use, or the results of the use of the software or the information contained herein. Esko Software BV shall not be liable for any direct, indirect, consequential or incidental damages arising out of the use or inability to use the software or the information contained herein.

The information contained herein is subject to change without notice. Revisions may be issued from time to time to advise of such changes and/or additions.

No part of this document may be reproduced, stored in a data base or retrieval system, or published, in any form or in any way, electronically, mechanically, by print, photoprint, microfilm or any other means without prior written permission from Esko Software BV.

This document supersedes all previous dated versions.

PANTONE® Colors displayed in the software application or in the user documentation may not match PANTONE-identified standards. Consult current PANTONE Color Publications for accurate color. PANTONE® and other Pantone trademarks are the property of Pantone LLC. © Pantone LLC, 2015

Pantone is the copyright owner of color data and/or software which are licensed to Esko to distribute for use only in combination with Studio Visualizer. PANTONE Color Data and/or Software shall not be copied onto another disk or into memory unless as part of the execution of Studio Visualizer.

This software is based in part on the work of the Independent JPEG Group.

Portions of this software are copyright © 1996-2002 The FreeType Project (www.freetype.org). All rights reserved.

Portions of this software are copyright 2006 Feeling Software, copyright 2005-2006 Autodesk Media Entertainment.

Portions of this software are copyright ©1998-2003 Daniel Veillard. All rights reserved.

Portions of this software are copyright ©1999-2006 The Botan Project. All rights reserved.

Part of the software embedded in this product is gSOAP software. Portions created by gSOAP are Copyright ©2001-2004 Robert A. van Engelen, Genivia inc. All rights reserved.

Portions of this software are copyright ©1998-2008 The OpenSSL Project and ©1995-1998 Eric Young (eay@cryptsoft.com). All rights reserved.

This product includes software developed by the Apache Software Foundation (<http://www.apache.org/>).

Adobe, the Adobe logo, Acrobat, the Acrobat logo, Adobe Creative Suite, Illustrator, InDesign, PDF, Photoshop, PostScript, XMP and the Powered by XMP logo are either registered trademarks or trademarks of Adobe Systems Incorporated in the United States and/or other countries.

Microsoft and the Microsoft logo are registered trademarks of Microsoft Corporation in the United States and other countries.

SolidWorks is a registered trademark of SolidWorks Corporation.

Portions of this software are owned by Spatial Corp. 1986 2003. All Rights Reserved.

JDF and the JDF logo are trademarks of the CIP4 Organisation. Copyright 2001 The International Cooperation for the Integration of Processes in Prepress, Press and Postpress (CIP4). All rights reserved.

The Esko software contains the RSA Data Security, Inc. MD5 Message-Digest Algorithm.

Java and all Java-based trademarks and logos are trademarks or registered trademarks of Sun Microsystems in the U.S. and other countries.

Part of this software uses technology by Best Color Technology (EFI). EFI and Bestcolor are registered trademarks of Electronics For Imaging GmbH in the U.S. Patent and Trademark Office.

Contains PowerNest library Copyrighted and Licensed by Alma, 2005 - 2007.

Part of this software uses technology by GlobalVision. ArtProof and ScanProof are registered trademarks of GlobalVision Inc.

Part of this software uses technology by Qoppa Software. Copyright © 2002-Present. All Rights Reserved.

All other product names are trademarks or registered trademarks of their respective owners.

Correspondence regarding this publication should be forwarded to:

Esko Software BV

Kortrijksesteenweg 1095

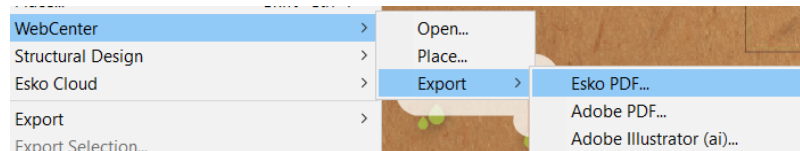
B - 9051 Gent

info.eur@esko.com

2. WebCenter Connector Plug-In

WebCenter Connector opens various file types stored in WebCenter in Adobe® Illustrator®. It also exports files back to WebCenter.

Access WebCenter Connector using the commands on the **File** menu in Adobe Illustrator.



Note:

For using WebCenter Connector in combination with Studio, please refer to the Studio documentation.

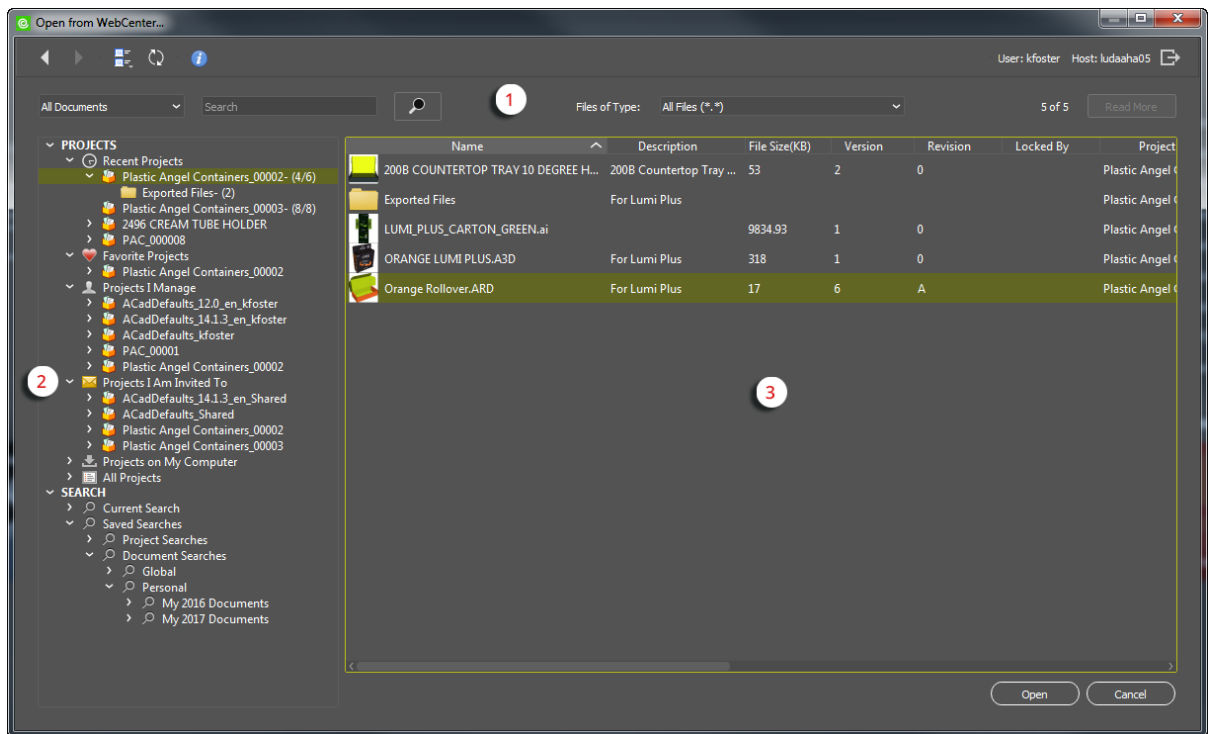
2.1. Starting WebCenter Connector

1. Click **File > WebCenter > Open**.
2. In the WebCenter Connector dialog box:
 - a) Make sure there is a valid WebCenter address in the Address field. To save an address for future use, enter one and click **Add**.
 - b) Enter the username and password given to you by your WebCenter administrator.
 - c) Click **Login**.

The Open from WebCenter dialog box appears.

2.2. Browser window elements

The browser has 3 main areas.



Area

Function

- 1 The menu bar, toolbar, and display bar, where you use commands and tools, search for Projects and documents, control what is shown in the document list, and log out of WebCenter.
- 2 Tree control where you select which Project or folder to view, or which saved search to perform. The browser also shows search results here. Drag the bar between the tree and the document list to adjust the size as desired.
- 3 List of documents in the selected Project or folder, or search results or recent Projects depending on the node you select in the tree. Scroll to the right to see all the available columns.







Open becomes available when you select a file.

The browser uses the color choice you set in Illustrator's preferences.

2.2.1. The Browser Toolbar

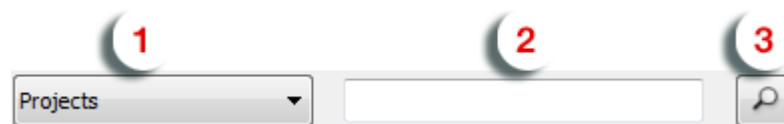
The browser toolbar, shown below, lets you move between Project views, change the icon size, refresh the view, and log out of WebCenter. Clicking **Logout** also closes the browser.



Button	Tool	Active When
	Back	You have viewed at least two Projects or folders and have a previous view
	Forward	You are seeing a previous view and can go forward to another view
	List Style	Always active.
	Refresh	A Project is selected. This requeries the database for updated information about the Project.
	Version History Information	A document is selected.
	Logout	Always active.

2.2.2. Search Controls

Use the search controls to search for Projects and documents.

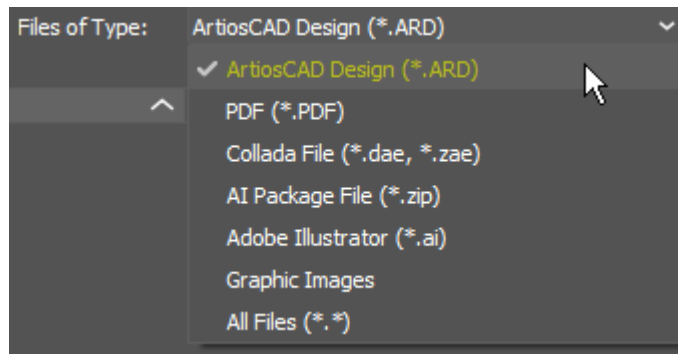


Area	Function
1	Search Type drop-down list box with which you choose what to search for
2	Keyword entry field where you enter the terms to search for
3	Search button that starts the keyword search

Performing searches is covered later in this chapter.

2.2.3. Document Display Control

The document display control filters the list of shown documents. Choose the type of documents the browser shows from the drop-down list.



When you select **Graphic Images**, WebCenter Connector shows the following types of files:

- *.ai
- *.ap
- *.bmp
- *.ct
- *.dcs
- *.epf
- *.eps
- *.grs
- *.jpeg
- *.jpg
- *.len
- *.lp
- *.paf
- *.pdfpla
- *.pla
- *.png
- *.ps
- *.psd
- *.tga
- *.tif
- *.tiff

Note:

THIS CONTROL DETERMINES THE DOCUMENTS YOU SEE IN THE DOCUMENT LIST. IF YOU ARE LOOKING FOR A DOCUMENT AND CANNOT FIND IT, MAKE SURE THIS CONTROL IS SET PROPERLY.

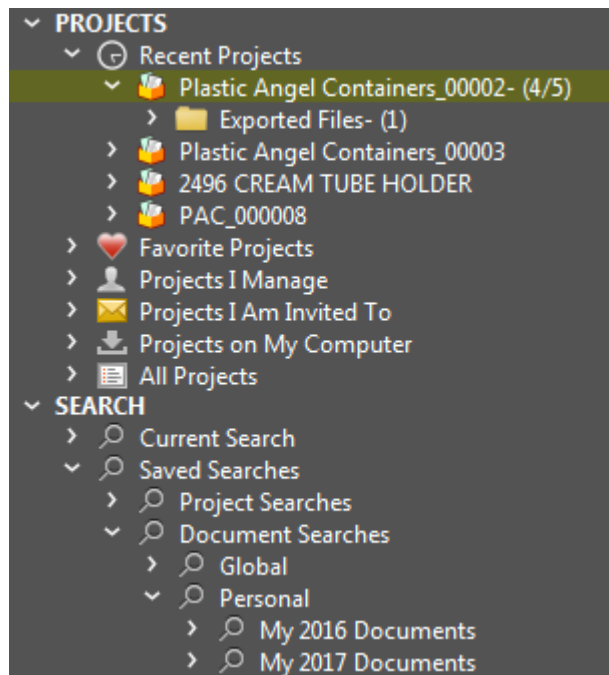
2.2.4. Paging Controls

The paging controls let you navigate search results. The browser displays 25 documents per page of search results. Click **Read More** to show more lines.



2.2.5. Tree Control

The tree control lets you work with Projects, folders, searches, and documents.



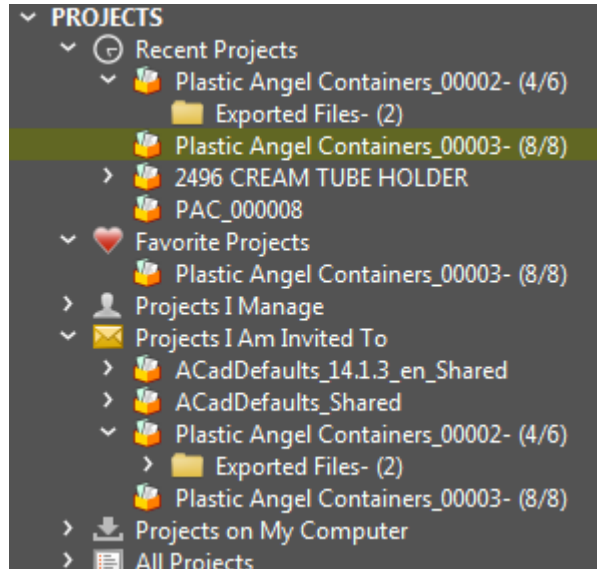
The tree has two top-level nodes:

- Projects
- Search

When you select a Project, WebCenter Connector displays a count after the Project name of the number of documents in the root folder of the Project and then the total number of documents in the Project. When you select a folder within a Project, it displays the number of documents in the folder after the folder name.

Projects Node

The Projects node of the tree control contains several nodes itself.



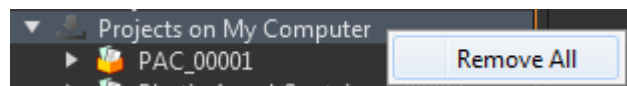
Recent Projects shows the four most recent Projects from which you have opened or placed a document, or to which you have exported a document. The most recent Project is at the top of the list. WebCenter Connector remembers recent Projects from up to 3 different WebCenter servers.

Favorite Projects shows those Projects you have designed as favorites in WebCenter or ArtiosCAD Enterprise.

Projects I Manage shows Projects you manage. If you are not a Project Manager, this node is empty.

Projects I Am Invited To shows those Projects of which you are a member.

Projects on My Computer shows those Projects which are stored in the local database cache on your computer. WebCenter Connector stores a copy of each Project you explicitly look in or open files from in the local database cache. If you need to reduce the size of the database cache to make more disc space available, right-click a Project in this node and click **Remove Project from My Computer** to delete your local copy. You may also right-click Projects on My Computer itself and click **Remove All** to remove all the cached Projects at once.

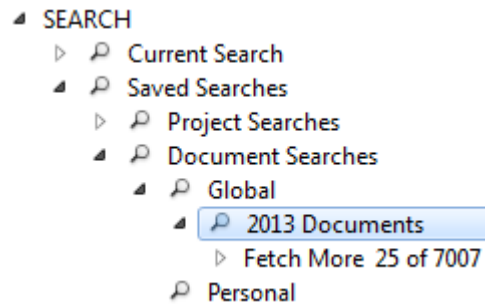


Please note that if you take your computer offline, you will not be able to access a Project if you delete it from your local database cache.

All Projects shows all Projects you have permission to see.

Search Node

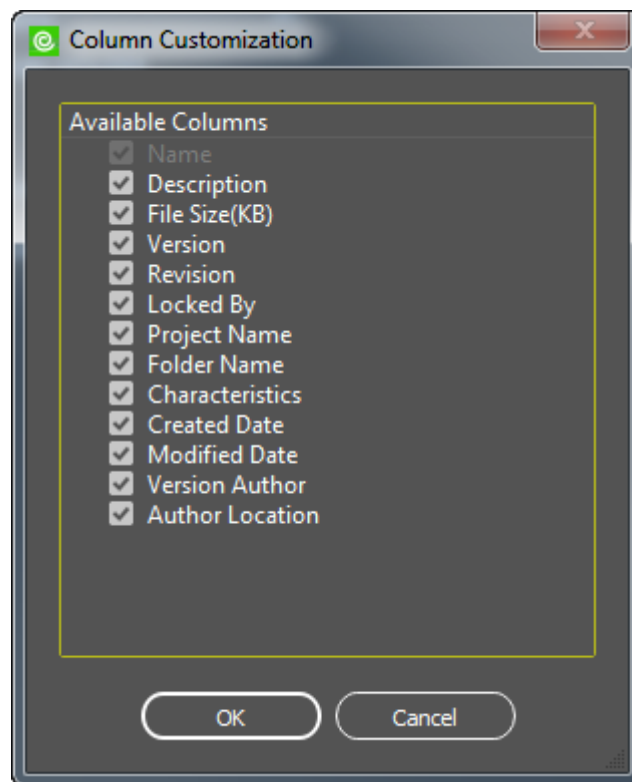
The Search node shows the results of the current search and also shows saved searches you can run when desired.



Searching is covered later in this chapter.

2.2.6. Customizing the Columns in the Document List

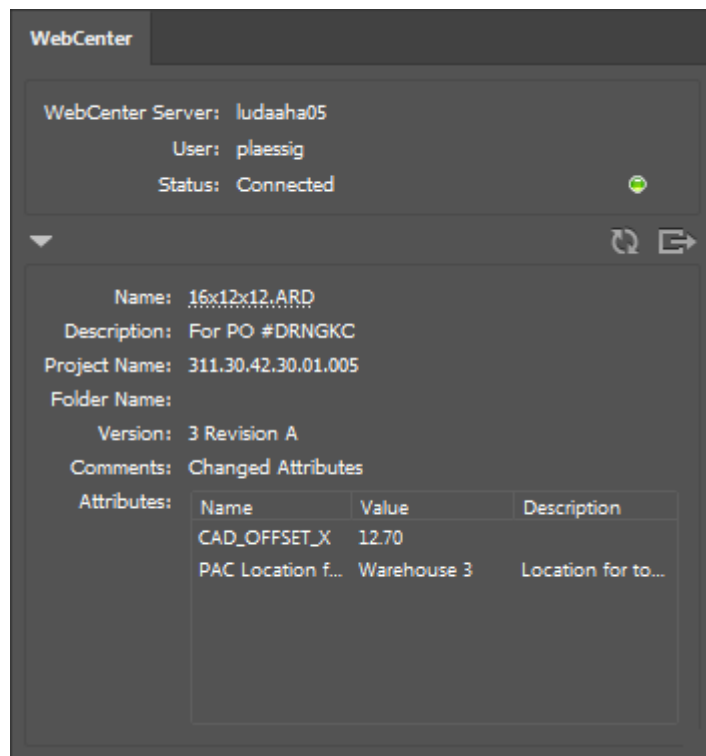
You can customize the columns WebCenter Connector shows in the document list by right-clicking on a column header and clicking **Customize** to open the Column Customization dialog box.




Select the checkboxes for the columns to display and deselect the checkboxes of the columns to hide. All columns are selected by default. Click **OK** when done to return to the browser.


2.3. Using the WebCenter Palette in Adobe Illustrator


The WebCenter palette in Adobe Illustrator shows information about the current document if it contains links to WebCenter. To show or hide this palette, click **Window > Esko > WebCenter**.



The top pane of the palette shows information about your connection to the WebCenter server. The bottom pane shows information about the current file and can be collapsed if desired.

 Use **Synchronize** to get the latest details of a linked CAD file from the WebCenter server. It also updates the name and location of the document if you have changed it within the same Project.

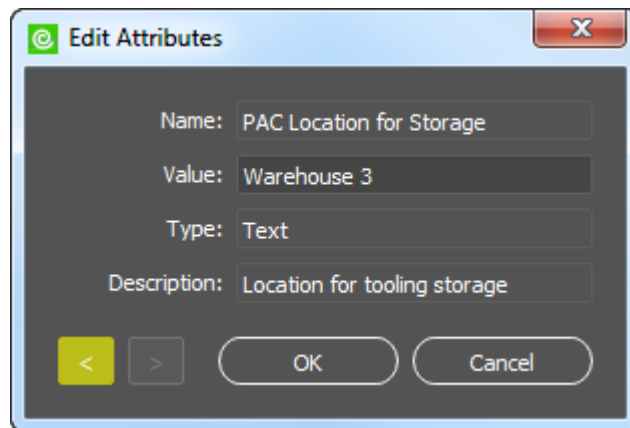
 Use **Login** to connect to WebCenter without having to open or place a file.

 Use **Logout** to break the connection to WebCenter.

Click the filename to launch a browser and open the file in WebCenter. Since you are already logged in, you go directly to the file.

Depending on your login state and what you have open, the palette displays varying amounts of information.

The Attributes table lists the Attributes for the document. Double-click an Attribute to show more information about it or to change its value.



Click inside the Value field to change it. Use the arrows to move between Attributes. Click **OK** to save the changes. If the document does not have any Attributes, the palette does not show the table.

2.4. Searching

Keyword searching lets you search the names of Projects and documents for a specific word or part of a word.

1. Click the **Search Type** drop down-list box and choose the type of object to search for.
2. In the keyword entry field, enter the word to search for. To search on part of a word, use an asterisk to replace the other part(s) of the word.
3. Click the magnifying glass button to start the search.
4. Depending on what you searched for, results will appear in the node tree, the document list, or both.

Note: Make sure that you set the filetype selector appropriately after performing a search. The browser may list a number of search results, but if the filetype selector is set incorrectly, you may not see the results you were expecting.

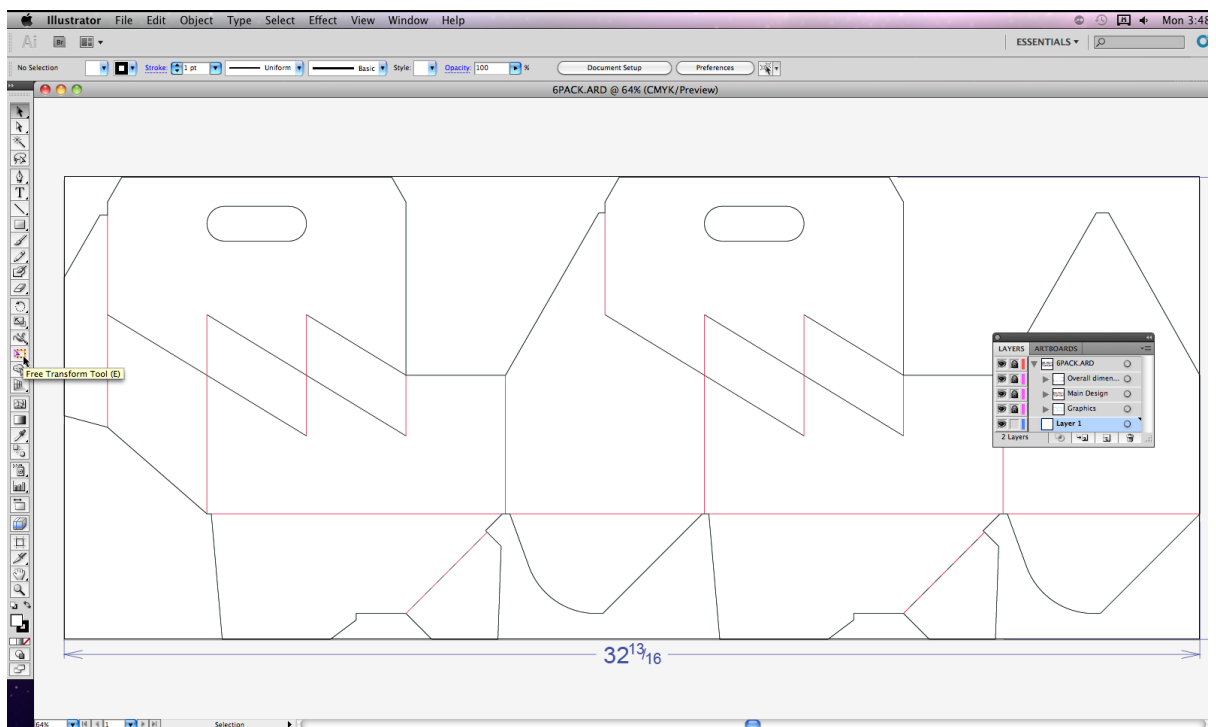
2.4.1. Using a Saved Search

1. In the tree control of the browser, expand the Search node.
2. Expand the **Saved Searches** catalog.
3. Expand either **Project Searches** or **Document Searches**.
4. Expand either **Global** or **Personal**.
5. Click the desired saved search. It will run automatically.

Depending on what you searched for, results will appear in the node tree, the document list, or both. Make sure to set the filetype selector appropriately so that you see the results you expect.

2.5. Opening or Placing a Document from WebCenter

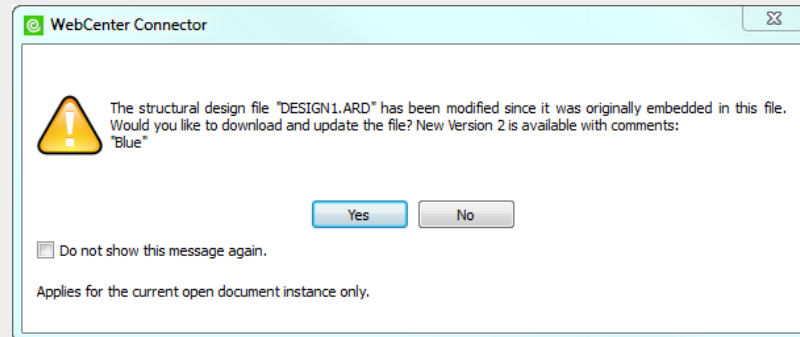
1. Click **File > WebCenter > Open** (or **Place**) to open the WebCenter Connector dialog box.
2. Choose a server and log in with your username and password.
3. Use the browser to navigate to the Project containing the desired document, or search for it. Make sure to set the **Files of Type** selector appropriately.
4. Select the document to open or place.
5. Click **Open** or **Place**.
6. WebCenter Connector downloads the file and opens or places it in Adobe Illustrator.



7. Work on the file as desired.
- Use the instructions in other sections to export this document back to WebCenter.

Note: You may place as many ArtiosCAD structural design documents from WebCenter as desired.

Note: If the original structural design file changes, WebCenter Connector warns you and asks if you want to download the updated version. Click **Yes** to download and update the file or **No** to keep working with the current version.



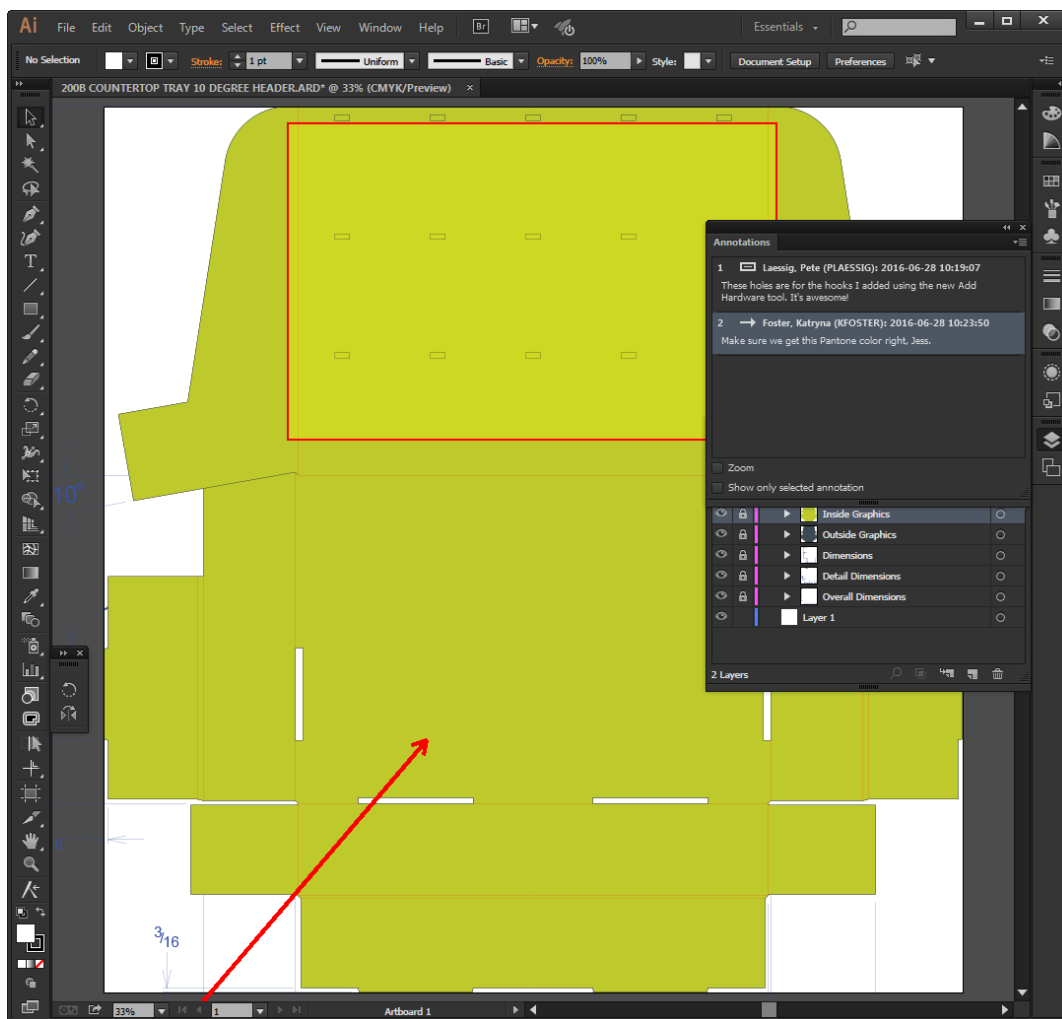
WebCenter Connector checks every 5 minutes for changes unless you check **Do not show this message again**, in which case it stops checking and does not show you if there are further changes until the next time you open the Adobe Illustrator document.

If a native Illustrator document you open contains a link to a WebCenter document, and you are not logged in to that server, WebCenter Connector may prompt you to log in to that server for error checking to occur.

If you have multiple documents open from different WebCenter servers, and switch to working in a document from a server that you are not currently logged in to, WebCenter Connector may prompt you to log in to that server for error checking to occur.

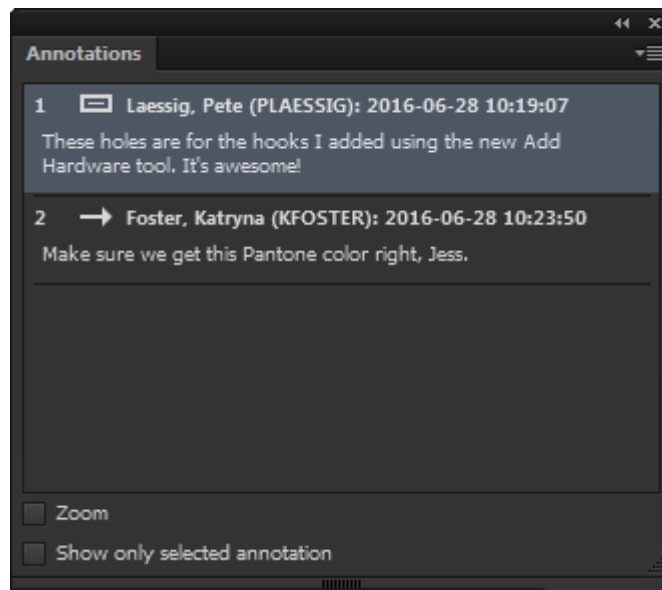
2.5.1. Working with Annotations

If the file has annotations added to it in the WebCenter Viewer, WebCenter Connector displays them and opens the Annotations palette.



Click an annotation in the palette to emphasize it on the art board.

In the Annotations palette, use **Zoom** to zoom in on the selected annotation on the art board. **Show only selected annotation** hides the non-selected annotations.

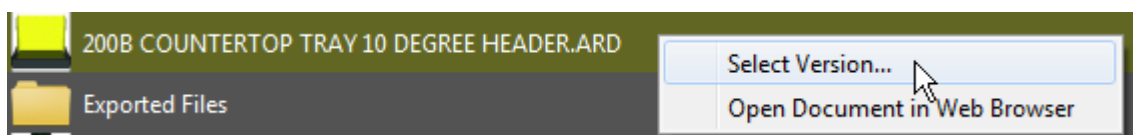



Click **Update Annotations** on the palette's menu to synchronize the annotations with those in WebCenter.

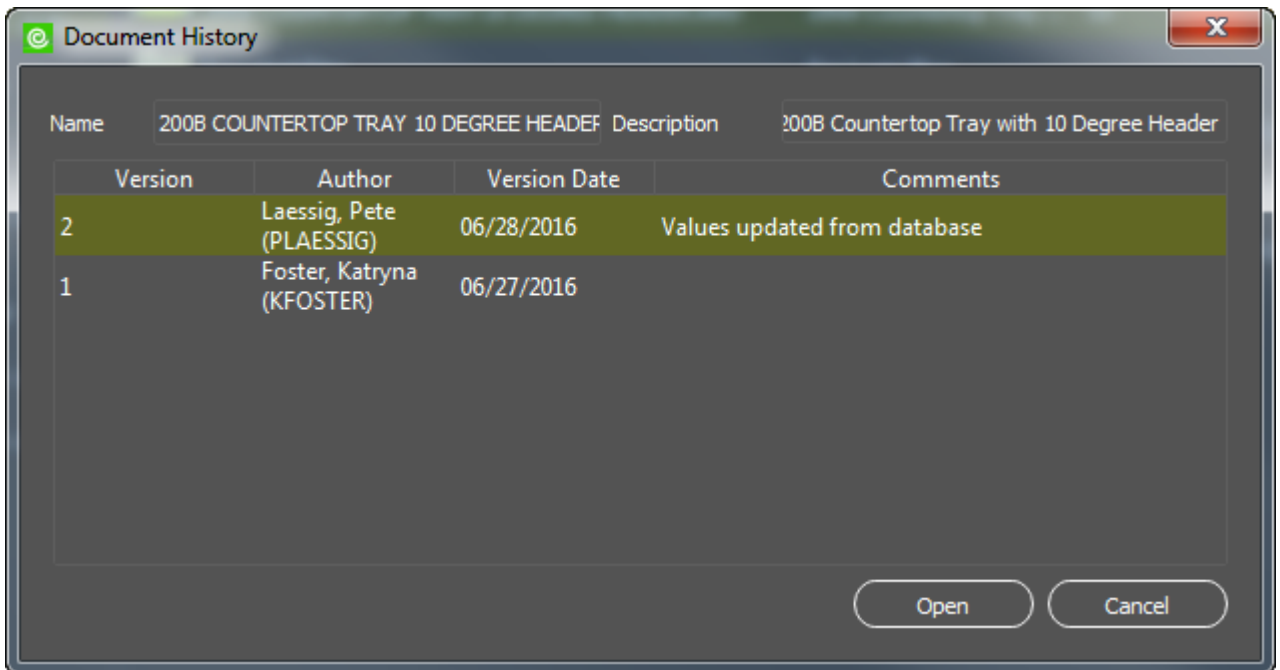
2.6. Opening or Placing an Earlier Version of a Document

The document list in WebCenter Connector shows the latest version of the document. To open or place an earlier version of the document, do the following:

1. Open WebCenter Connector by clicking **File > WebCenter > Open or Place**.
2. Either:
 - a) Right-click a document in the document list and click **Select Version** on the context menu.



- b)  Select the document in the list and click **Version History Information** on the toolbar.
3. WebCenter Connector opens the Document History dialog box.

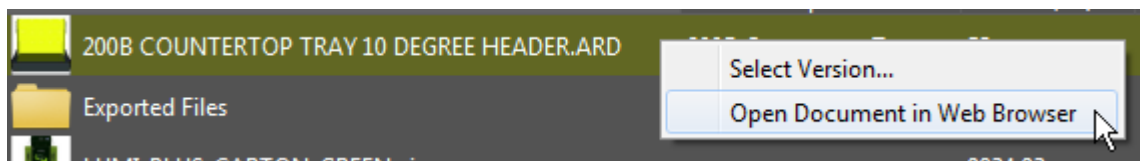


4. Select the desired version of the document and click **Open** or **Place**.
5. WebCenter Connector opens or places the document in the Illustrator document.

Note: You can also view the version history of a CHILI package this way, but you cannot open or place it. To work with earlier versions of a CHILI package, use the Dynamic Content plug-in.

2.7. Opening a Document in a Web Browser

1. Right-click a document in the document list and click **Open in Web Browser** on the context menu.



2. WebCenter Connector launches the default Web browser, connects to WebCenter, and opens the Action History tab of the Document Details page for the selected document.

200B COUNTERTOP TRAY 10 DEGREE HEADER.ARD

Document: 200B COUNTERTOP TRAY 10 DEGREE HEADER.ARD(53KB)
 Version: 2
 Description: 200B Countertop Tray with 10 Degree Header
 Project: Plastic Angel Containers_00002
 Approval: No Approval Required

Design Information Document Information Approval **Action History** Annotations Projects Attributes References Characteristics Discussions

Selected Document Version 2

Print

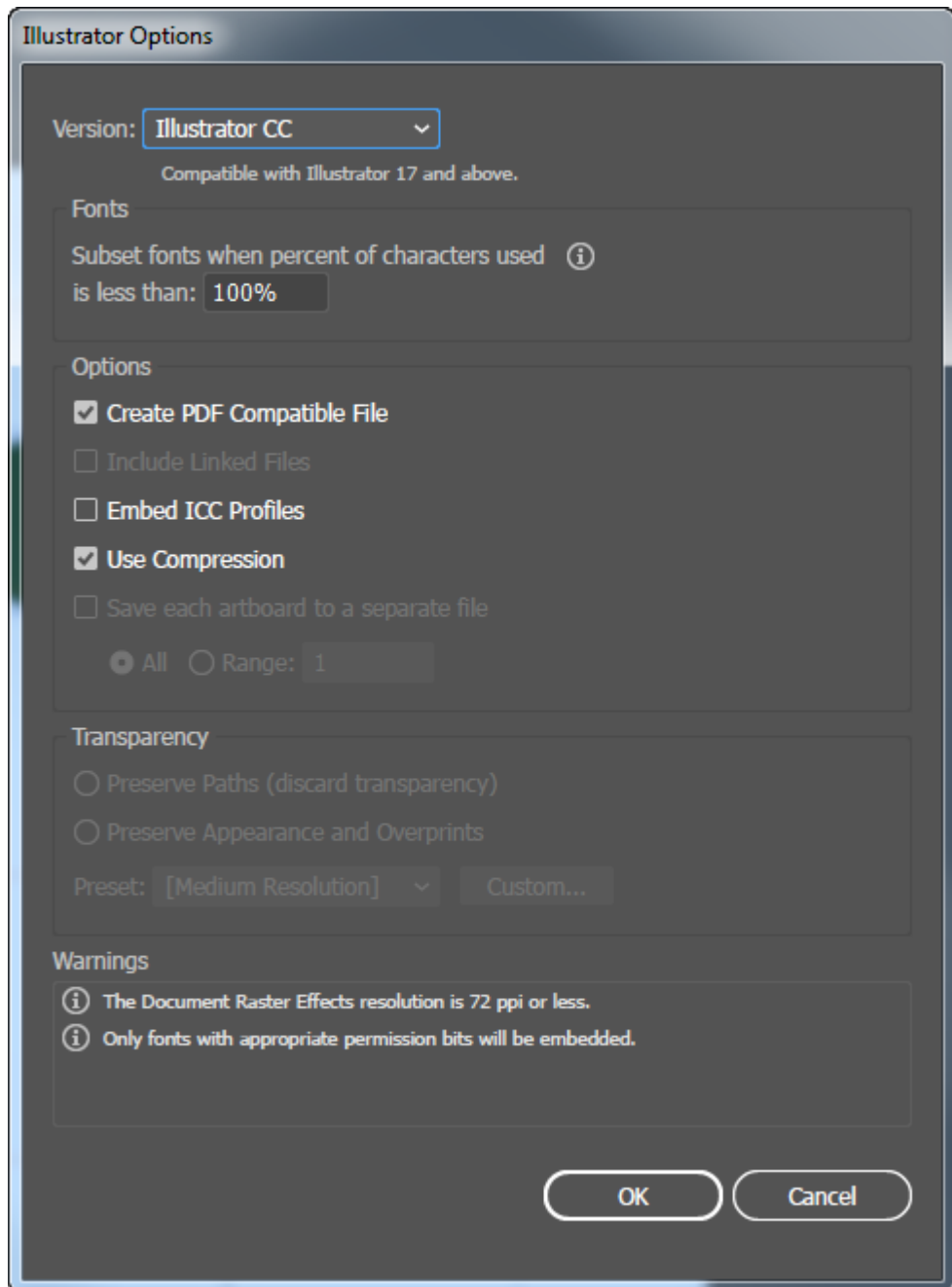
Version	Event	Status	Date	User	Comment
▼ 2	Upload New Version		Jun 28, 2016 at 10:17 AM	Laessig, Pete (PLAESSIG)	Values updated from database
View Generation					
	Check and register		Jun 28, 2016 at 10:17 AM		Finished Successfully Jun 28, 2016 at 10:17 AM
Annotations					
	Annotation		Jun 28, 2016 at 10:24 AM	Foster, Katryna (KFOSTER)	Arrow Annotation (2) "Make sure we get this Pantone color right, Jess." added by Foster, Katryna (KFOSTER) on Tue Jun 28 2016 10:23:50 GMT-0400 (Eastern Daylight Time)
	Annotation		Jun 28, 2016 at 10:19 AM	Laessig, Pete (PLAESSIG)	Highlight annotation (1) "These holes are for the hooks I added using the new Add Hardware tool. It's awesome!" added by Laessig, Pete (PLAESSIG) on Tue Jun 28 2016 10:19:07 GMT-0400 (Eastern Standard Time)
▶ 1	Upload Document		Jun 27, 2016 at 3:40 PM	Foster, Katryna (KFOSTER)	

3. Work on the document in WebCenter as desired.

2.8. Exporting a Native Adobe Illustrator Document to WebCenter

To export a non-normalized PDF file from Adobe Illustrator into WebCenter, do the following:

1. When you are done working on the document in Adobe Illustrator, click **File > WebCenter > Export > Adobe Illustrator (ai)**.
2. In the Illustrator Options dialog box, set the options as desired and click **OK**.



3. Use the browser to navigate to the location where you want to save the file.
4. The filename is seeded to the name of the workspace. Change it if desired.
5. If this is a new version of an existing file, enter a comment for this version.
6. Click **Export**. WebCenter Connector uploads the Adobe Illustrator file.

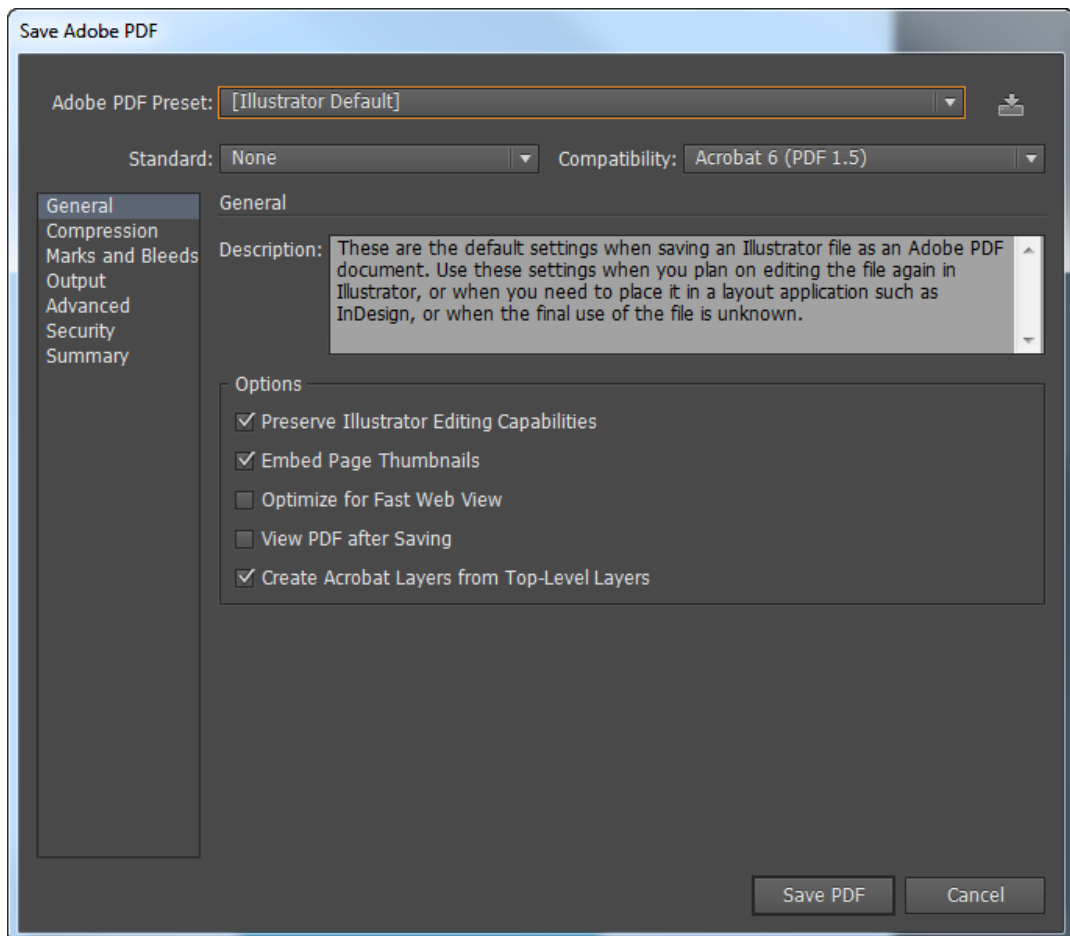
Note:

If the document contains external links, WebCenter Connector preserves the links but does not additionally export their targets.

2.9. Exporting an Adobe PDF document to WebCenter

To export a non-normalized PDF file from Adobe Illustrator into WebCenter, do the following:

1. When you are done working on the document in Adobe Illustrator, click **File > WebCenter > Export > Adobe PDF**.
2. In the Save Adobe PDF dialog box, set the options as desired and click **Save PDF**.



3. Use the browser to navigate to the location where you want to save the file.
4. The filename is seeded to the name of the workspace. Change it if desired.
5. If this is a new version of an existing file, enter a comment for this version.
6. Click **Export**. WebCenter Connector uploads the PDF file.

2.10. Exporting an Esko PDF document to WebCenter

An Esko PDF document is a PDF with additional metadata useful to Esko applications. There are two types, **PDF+** with processing steps functionality, and **Normalized PDF** for compatibility with older software. Select the format of Esko PDF document to use in the Preferences panel of the Ink Manager plug-in, part of the Data Exchange plug-in.

1. When you are done working on the document in Adobe Illustrator, click **File > WebCenter > Export > Esko PDF**.
2. Use the browser to navigate to the location where you want to save the file.
3. The filename is seeded to the name of the workspace. Change it if desired.
4. If this is a new version of an existing file, enter a comment for this version.
5. Click **Export**. WebCenter Connector uploads the PDF file.

2.11. Structural Design Files and WebCenter

2.11.1. Exporting Structural Designs to WebCenter

The Structural Design Export saves a copy of the selected structural design file to WebCenter. The Illustrator file will link to the newly saved structural design file.

Note: .BAG files are not supported

1. Choose **File > Structural Design > Export to WebCenter** and select the Structural Design you want to export.
2. Use the browser to navigate to the location where you want to save the file.
3. The filename is seeded to the name of the workspace. Change it if desired.
4. If this is a new version of an existing file, enter a comment for this version.
5. Click **Export**. WebCenter Connector uploads the PDF file.

2.11.2. Replacing a Structural Design from WebCenter

If you want to replace the placed printable parts of a structural design file while preserving the alignment between the technical drawing and the artwork, you can **replace** a structural design file.

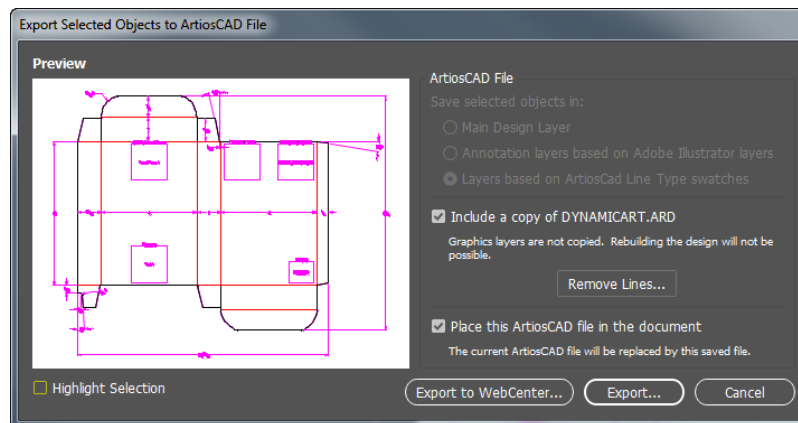
1. Choose **File > Structural Design > Replace from WebCenter** and select the name of the structural design file you want to replace
2. Choose a server and log in with your username and password.
3. Use the browser to navigate to the Project containing the desired document, or search for it. Make sure to set the **Files of Type** selector appropriately.
4. Select the document to place.

5. Click **Place**.

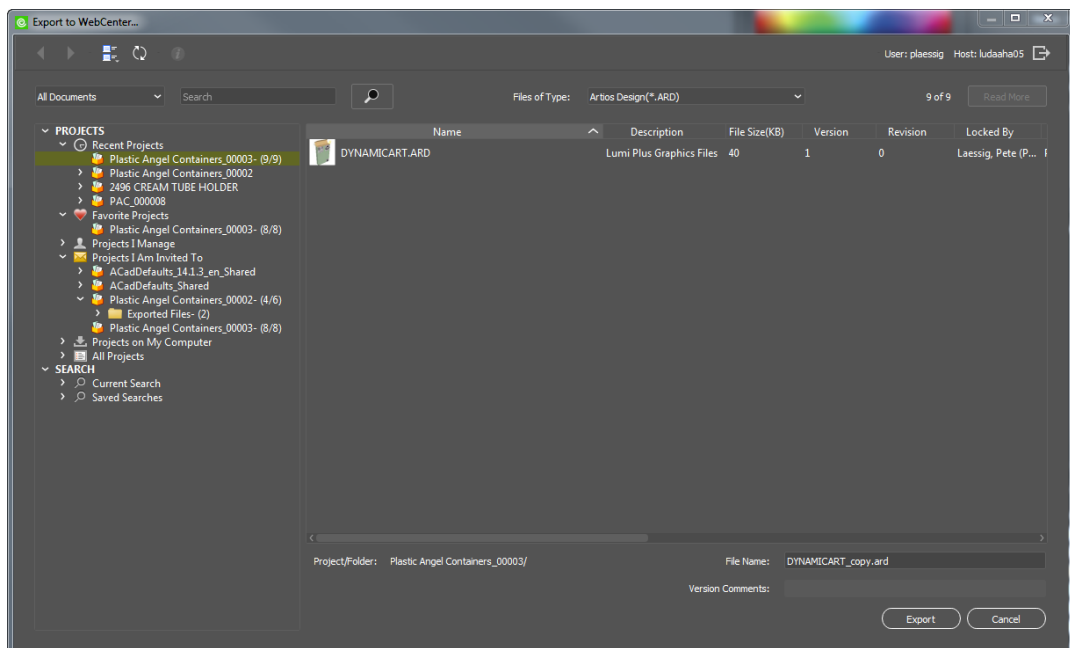
2.11.3. Exporting Selected Objects to ArtiosCAD File in WebCenter

If you have the Structural Design plug-in installed as well as WebCenter Connector, you can export a placed ArtiosCAD document with its changed art to WebCenter instead of a file.

1. Open the Adobe Illustrator workspace containing the placed ArtiosCAD document.
2. Make the desired changes in Adobe Illustrator and select them.
3. Click **File > Structural Design > Export Selected Objects to ArtiosCAD File**.



4. Set the options as desired and click **Export to WebCenter**.
5. The upload creates a copy by default by appending `_copy` to the filename. Change it if desired and click **Export**.



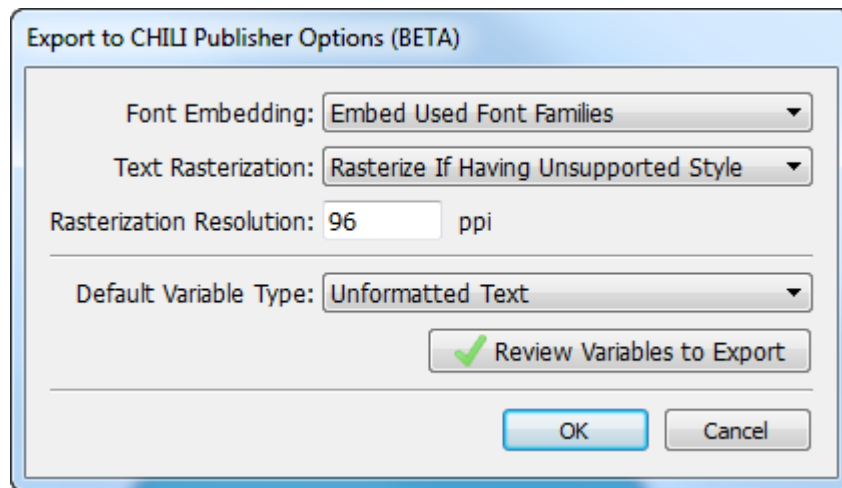
6. WebCenter Connector uploads the file to WebCenter.

If you selected both **Include a copy of ...** and **Place this ArtiosCAD file in the document**, WebCenter Connector then replaces the currently placed ArtiosCAD document with the new version. Use this combination with caution as you could lose graphics in Adobe Illustrator and resizability in ArtiosCAD.

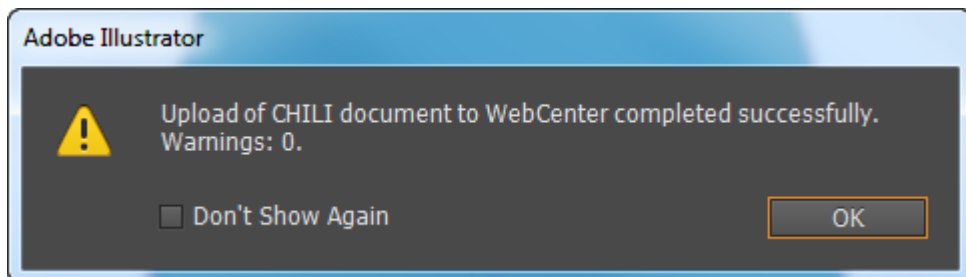
2.12. Exporting as a CHILI Package

To export an Adobe Illustrator document as a CHILI package to WebCenter, do the following.

1. Click **File > WebCenter > Export > CHILI Package**.
2. Set the options in the Export to CHILI Publisher Options dialog box. To look at the variable settings, click **Review Variables to Export**, and click **Close** when done. Click **OK**.



3. Use the browser to navigate to the location where you want to save the file.
4. The filename is seeded to the name of the workspace. Change it if desired.
5. If this is a new version of an existing file, enter a comment for this version.
6. Click **Export**. WebCenter Connector displays a progress bar.
7. Illustrator displays a status message when the upload finishes. Click **OK**.



2.13. Setting WebCenter Connector Preferences

In the WebCenter Connector Preferences dialog box, you can set file download locations, automatic cache clearing, and on the Macintosh, network proxy settings. On computers using Microsoft Windows, WebCenter Connector uses the system-wide proxy settings.

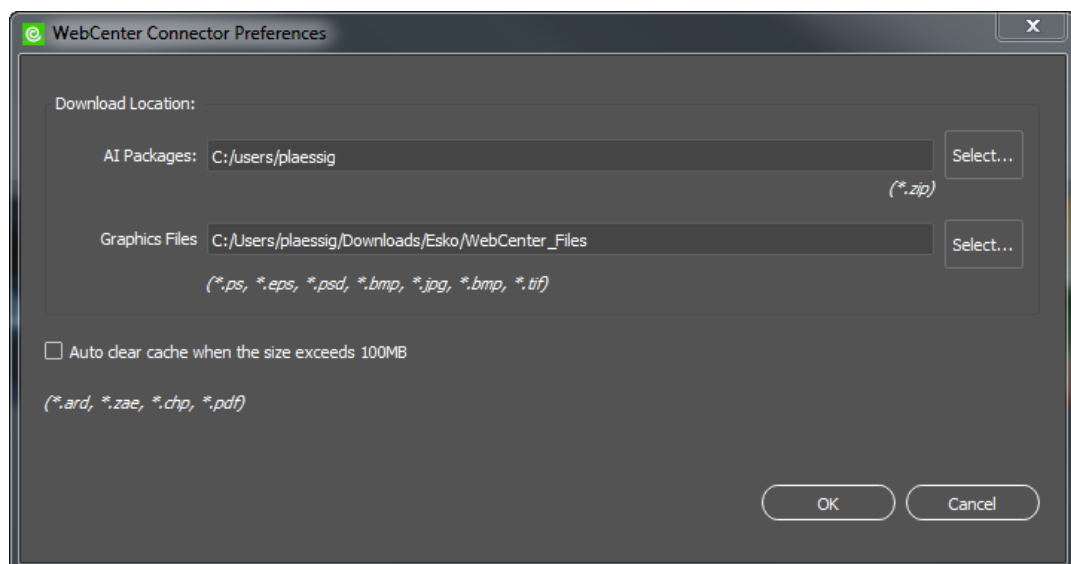
To set WebCenter Connector preferences, do the following in Adobe Illustrator:

- On the PC, click **Edit > Preferences > Esko > WebCenter Connector Preferences**.
- On the Macintosh, click **Illustrator > Preferences > Esko > WebCenter Connector Preferences**.

2.13.1. Setting the Download Location for Adobe Illustrator Packages and Graphics Files

To set the default locations WebCenter Connector uses to store Adobe Illustrator compressed packages and graphics files, do the following:

1. Open the WebCenter Connector Preferences dialog box as described in [Setting WebCenter Connector Preferences](#) on page 25.
2. For both AI Packages and Graphics Files, either type a location in the field, or click **Select** and use the Choose Download Location dialog box to select the desired location. Once the desired locations are in the fields, click **OK**.



3. If either location does not exist, WebCenter Connector prompts to create it.

4. WebCenter Connector will put the AI packages or graphics files you download from now on in the location you specified.

2.13.2. Automatically Controlling the Size of the Download Cache

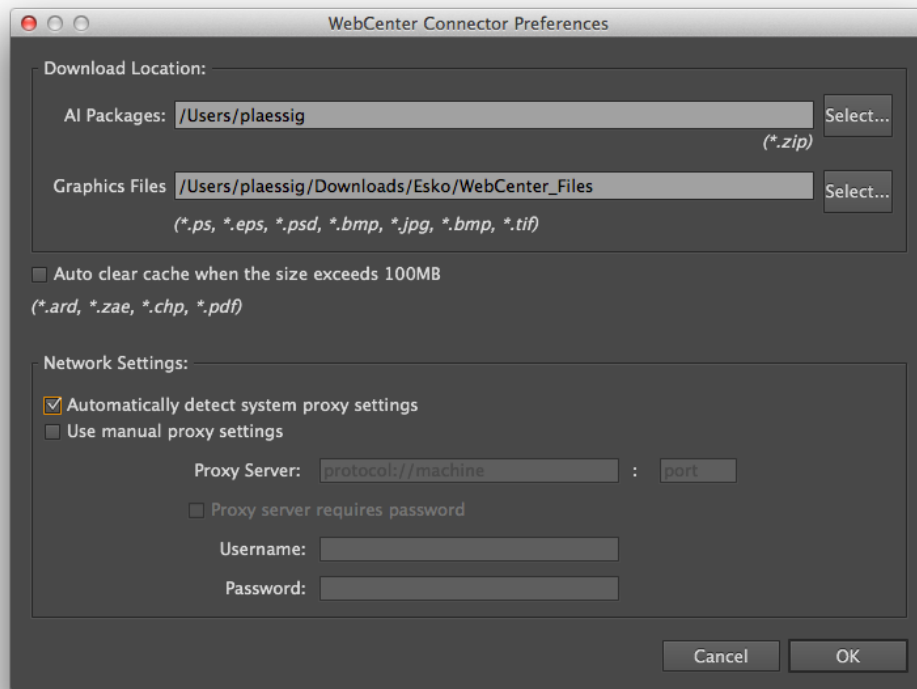
As you download content from WebCenter, WebCenter Connector stores it in the locations you set in the WebCenter Connector Preferences dialog box. You can choose to automatically delete files of the following types from the cache when it reaches 100 megabytes in size.

- ArtiosCAD documents (.ARD files)
 - Collada self-contained archives (.ZAE files)
 - CHILI packages (.CHP files)
 - Portable Document Format files (.PDF files)
1. Open the WebCenter Connector Preferences dialog box as described in [Setting WebCenter Connector Preferences](#) on page 25.
 2. Select **Auto clear cache when the size exceeds 100MB**.
 3. Click **OK**.

WebCenter Connector deletes the oldest files first until the cache size is beneath 100 MB.

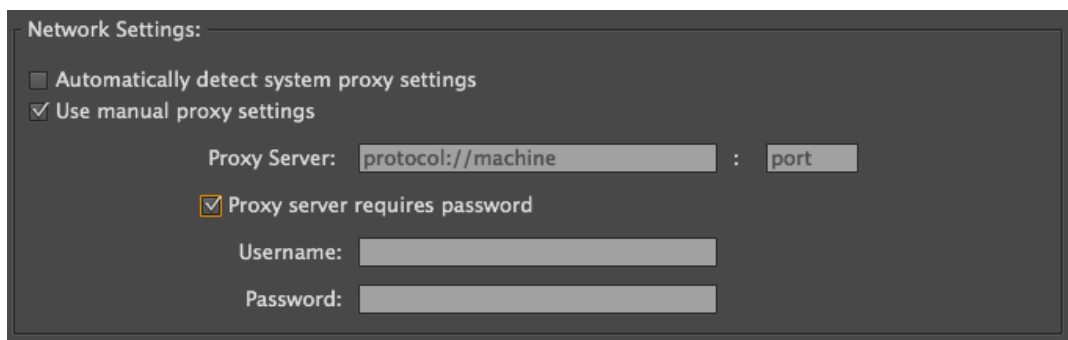
2.13.3. Configuring Network Proxy Support on the Apple Macintosh

If you are using a Macintosh, the WebCenter Connector Preferences dialog box has a Network Settings group.



The default setting in WebCenter Connector is **Automatically detect system proxy settings**.

To use a different proxy, or to specify a username and password to use with the proxy, select **Use manual proxy settings**.



The two options are mutually exclusive. Deselect both options to disable the use a network proxy.

In the Proxy Server field, enter the address of the proxy server, starting with either `http://` or `https://` as appropriate for the protocol, such as `https://proxy.mydomain.com`. Enter the port number for the proxy in the field after the colon.

If the proxy server requires a username and password, check **Proxy server requires password**, and enter the username and password in the fields provided.

Click **OK** when done to activate the proxy settings.

Note: On systems using Microsoft Windows, WebCenter Connector reads the system proxy settings automatically and does not need additional configuration.