

Automation Engine 14.1

Job Parameter Policy in JDF Job Creation

Contents

1. Introduction	3
2. Problem Description	4
2.1 Situation A – Normal Job Parameters Conflicting with JDF Job Parameters.....	4
2.2 Situation B - A Job Update Removes Job Parameters.....	5
3. Adapting the Policy	6
3.1 Technical details.....	6
3.1.1 Existing behaviour since the first version-V1.....	6
3.1.2 New behaviour since Automation Engine 12.1.1-V12.....	6
3.2 Default Job Parameter Policy.....	6
3.3 Changing the Job Parameter Policy.....	6
3.4 Impact of changing the Job Parameter Policy.....	7
3.5 Existing Jobs and Archive.....	8
3.5.1 Jobs.....	8
3.5.2 Archived Jobs.....	9

1. Introduction

The Job parameter policy in Job creation via JDF has changed in Automation Engine 12.1.1. The old policy was mainly designed for pushing order entry info from a business system ('MIS') to Automation Engine and this is no longer suited for the integration needs of today.

From 12.1.1 onwards Job parameters in a Job generated via JDF will no longer be prefixed. They will be merged with existing parameters in case of a Job update. With this change, the connectivity with WebCenter and/or an MIS is straightforward.

The purpose of this document is to explain when and how to adapt this Job parameter policy.

Note:

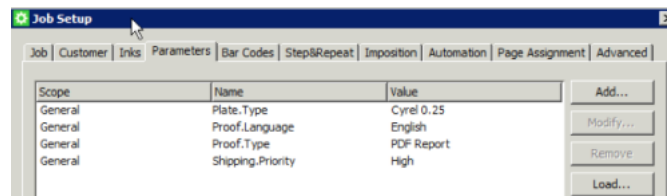
This document is only applicable for customers who have set up a JDF-based integration before Automation Engine 12.1.1 and who are facing one of the problems described the next section (or a variation or combination of them).

2. Problem Description

2.1 Situation A – Normal Job Parameters Conflicting with JDF Job Parameters

Use case: Synchronizing a WebCenter Project with an Automation Engine Job where the Job is not generated via JDF

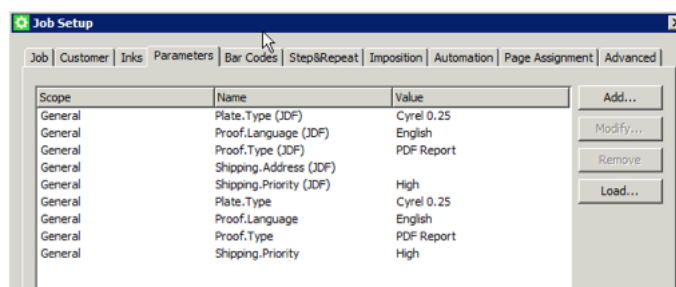
For a Job ABC, the parameters are added manually by a Pilot user or automatically by using the Create Job task.



Creating a project from this job will result in a project where the Job parameters map to project attributes with the same name. WebCenter users will be able to edit these attributes and synchronize the WebCenter Project with the Automation Engine Job.



After synchronizing all the WebCenter project attributes will be added to the list of Job parameters as JDF Job parameters which is not the expected behavior. The expected behavior here is that the attributes are mapped onto the existing (normal) Job parameters.



This case demonstrates that a bi-directional synchronization of parameters and attributes is not achieved.

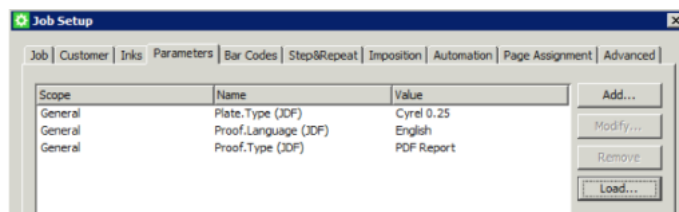
Note: Above-mentioned synchronization is setup with the **Create and Update WebCenter project** task in Automation Engine and the **Workflow Synchronization** configuration in WebCenter.

2.2 Situation B - A Job Update Removes Job Parameters

Use case: A single Automation Engine Job receives parameters from different sources via JDF

Note: We use a WebCenter case to describe the problem. However, this situation can also occur in JDF communication between Automation Engine and an MIS.

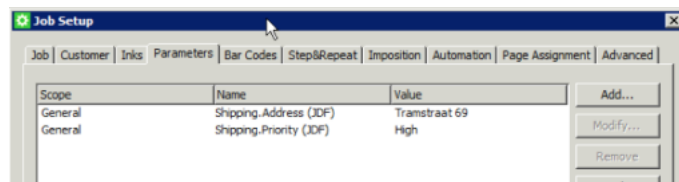
For a job ABC, a list of parameters are supplied by the MIS system and the job and parameters are created via JDF job creation.



A WebCenter project has a list of attributes which are added by a WebCenter user.



While synchronizing, all present WebCenter project attributes will be added to the list of Job parameters as JDF SmartNames. However, the existing JDF Job parameters are removed.



This case demonstrates that the Job parameters could not be updated by multiple sources.

3. Adapting the Policy

3.1 Technical details

The JDFServer component within Automation Engine can follow two different policies for treating Job parameters when processing JDF files for Job creation.

3.1.1 Existing behaviour since the first version-V1

The entries in the JDF file referring to Job parameters are added with a visual suffix "(JDF)" in the Job Parameter overview in the Job Setup dialog and a SmartName prefix "jp.jdfsmartname" is added.

When a new JDF file refers to Job parameters for the same job, all existing (previously) JDF-induced Job parameters (with visual suffix and SmartName prefix as described above) that are not included in the new JDF file are deleted.

3.1.2 New behaviour since Automation Engine 12.1.1-V12

While processing the entries in the JDF file referring to Job parameters, each Job parameter is added to the job without a visual suffix and with only the standard "jp" SmartName prefix.

Already existing Job parameters are updated with new values from a new JDF file. The existing Job parameters which are not referred in the new JDF file will not be deleted.

3.2 Default Job Parameter Policy

If the Jobs database contains Jobs with parameters prefixed with jdfsmartname, then the first policy (V-1) is used. Otherwise, the new policy (V-12) is used.

This implies that Automation Engine installations done before version 12 Assembly 4 will follow the V-1 Job Parameter Policy. A brand new install from scratch (with an empty Jobs database) will follow the V-12 Job Parameter Policy right away.

3.3 Changing the Job Parameter Policy

On the Automation Engine server, open a command window (go to **Start**, type `cmd` in the search field and confirm **cmd.exe**).

Browse to the `com_win` folder of the server software by typing:

```
cd %BG_PROG_FASTSERVER_VXXX%\com_win
```

and execute following command by typing:

```
addv10file.bat fastserver_vXXX jdf_installjppolicy_v12.ae_
```

where XXX corresponds with the version number as used in the folder name of the server.

Examples

- For Automation Engine 12.2:

Type:

```
cd %BG_PROG_FASTSERVER_V122%\com_win
```

Type:

```
addv10file.bat fastserver_v122 jdf_installjppolicy_v12.ae_
```

- For Automation Engine 14:

Type:

```
cd %BG_PROG_FASTSERVER_V140%\com_win
```

Type:

```
addv10file.bat fastserver_v140 jdf_installjppolicy_v12.ae_
```

Note: The policy can be reverted back to v-1 by typing in (XXX being the version number):

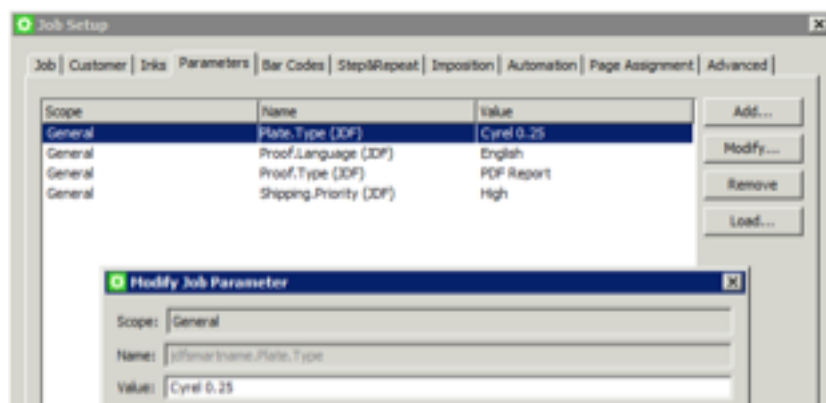
```
addv10file.bat fastserver_vXXX jdf_installjppolicy_v1.ae_
```

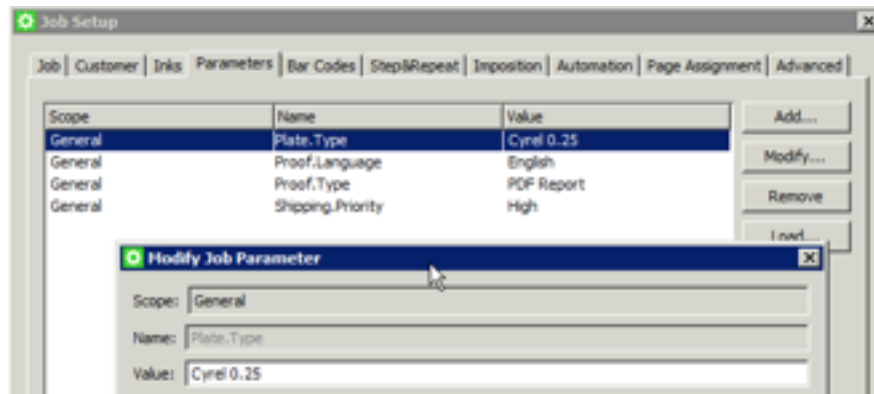
3.4 Impact of changing the Job Parameter Policy



Attention: Changing the policy from V-1 to V-12 has to be carefully prepared and planned to avoid issues.

When the Job Parameter Policy has been changed to V-12, the names of Job parameters will not be prefixed with `jdfsmartname` for the JDF files processed after the change. For instance, the Job parameter **Plate.Type** will simply be **Plate.Type** instead of `jdfsmartname.Plate.Type`.





Be aware that these Job parameters with a jdfsmartname prefix may have been used in:

- SmartNames
- SmartMark sets
- ReportMaker templates
- Workflow tickets

These will no longer work correctly with a Job Parameter policy change unless adapted manually to replace the prefixed parameters by un-prefixed parameters (replacing jp.jdfsmartname.parameter into jp.parameter).

This means that a double set of SmartNames, SmartMark sets and workflows may be required for a certain migration period.

3.5 Existing Jobs and Archive

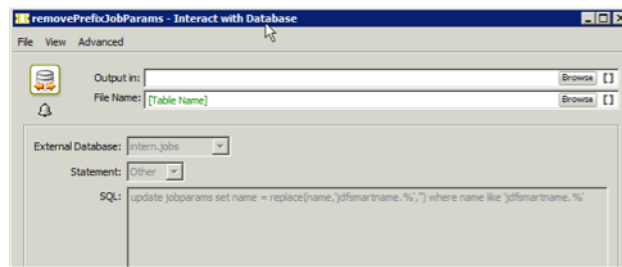
3.5.1 Jobs

Existing (live) Jobs on the system will not be adapted when changing the policy from V-1 to V-12. You can use a ticket to convert all prefixed Job parameters in the Jobs database.

The ticket **removePrefixJobParams.tic** can be found on the Automation Engine server in folder `\bg_prog_fastserver_v121\dat\tickets\export`. To use it,

1. **Import** this ticket via the **Tickets view** in the Pilot.
2. Launch the ticket on any file. This will update the current Job database (= remove the JDF prefix from all Job parameters in the complete job database).

Important: Handle this ticket with care. Before doing this, make sure you have a backup of your Jobs database.



3.5.2 Archived Jobs

Use the **removePrefixJobParams.tic** ticket to correct jobs restored from an archive. This ticket can be put in a workflow with a **Restore Job** ticket.



Attention: When restoring a job with JDF prefixed Job parameters on a new system (having the default V-12 policy), the policy will change to V-1. To avoid this, follow the instructions described in [Changing the Job Parameter Policy](#) on page 6. Once the policy is forcibly set, it will no longer change.