

Print Control Wizard

Overview



Robert Bruce

Product Manager

June 2018

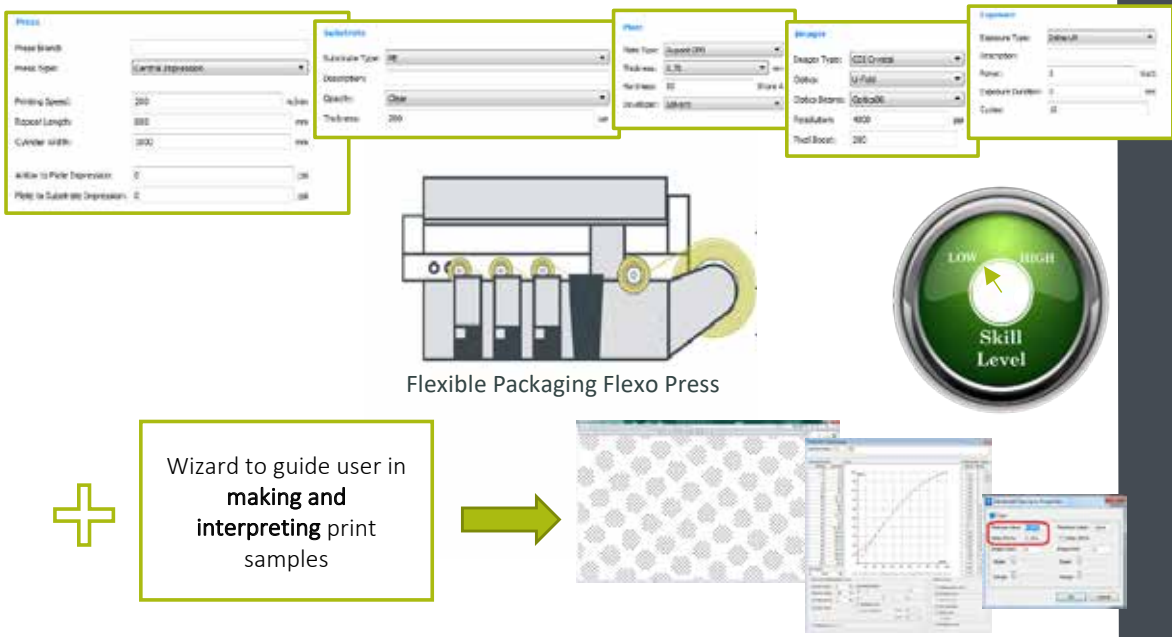
Print Control Wizard

A new wizard based user interface which asks questions of your flexible packaging environment

The wizard automates the generation of good for print 'Crystal' flexo screens & DGCs for Flexible Packaging

The new Crystal Screens offer the best in class print quality for Flexible Packaging in combination with the Crystal XPS

Now in controlled sales



Press

Press Brand:

Press Type:

Printing Speed: m/min

Repeat Length: mm

Cylinder Width: mm

Anilox to Plate Impression: psi

Plate to Substrate Impression: psi

Imager

Imager Type:

Optics:

Optics Beams:

Resolution: ppi

Pixel Boost:

Substrate

Substrate Type:

Description:

Opacity:

Thickness:

Plate

Plate Type:

Thickness: mm

Hardness: Shore A

Developer:

Exposure

Exposure Type:

Description:

Power: Watt

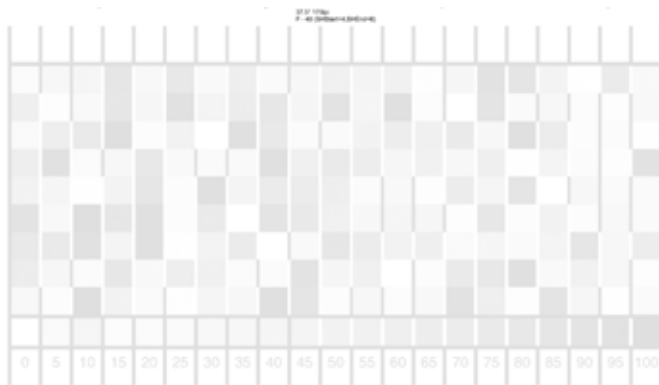
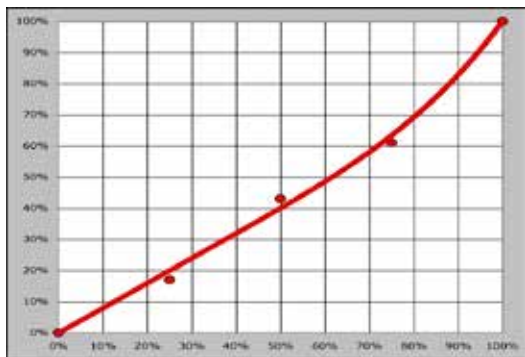
Exposure Duration: sec

Cycles:

Setting A Print Standard

A new wizard based user interface which asks questions of your flexible packaging environment

This enables the wizard to set a standard

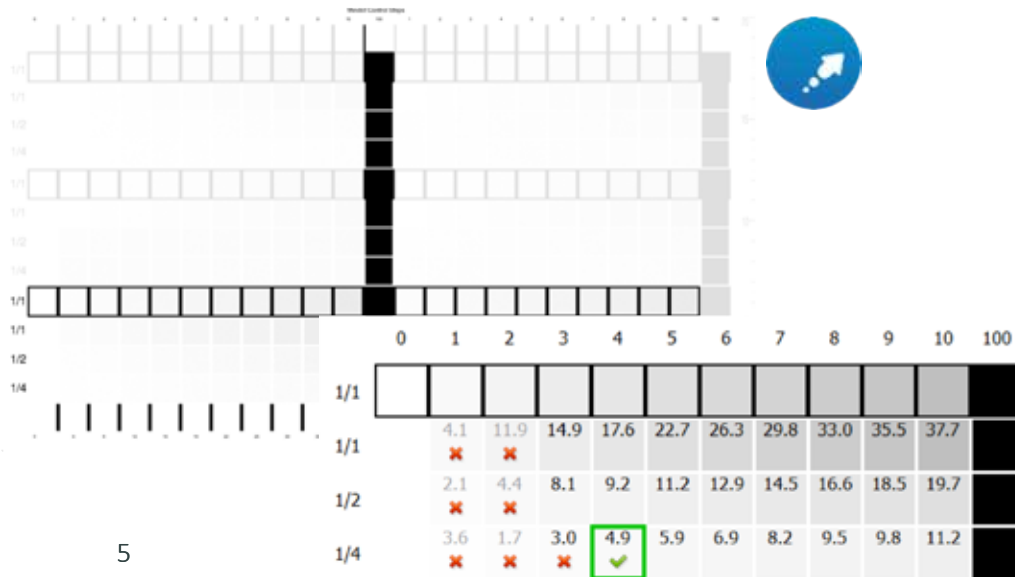
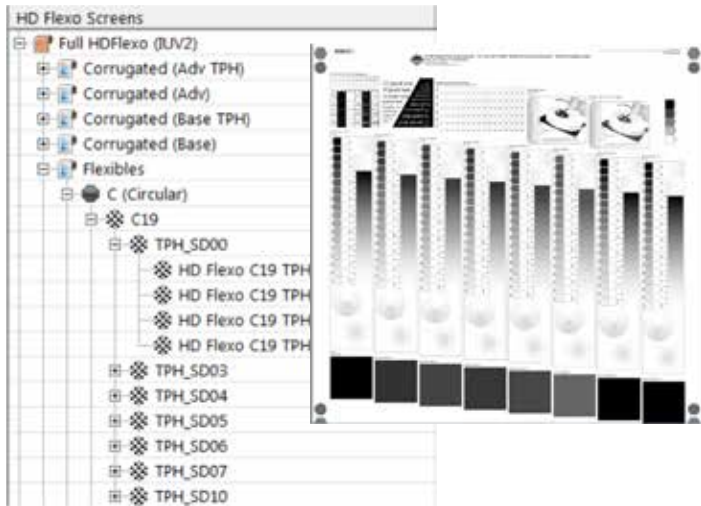


Dot Gain Curve Generation

Generating Curves has historically been a **manual process**, measuring a tone strip and entering data

The new DGC chart allows the process of generating dot gain curves to be **automated** by measuring with an Xrite i1i0

The randomized chart has multiple patches for each tonal value, averaging the results for **smoother curves**



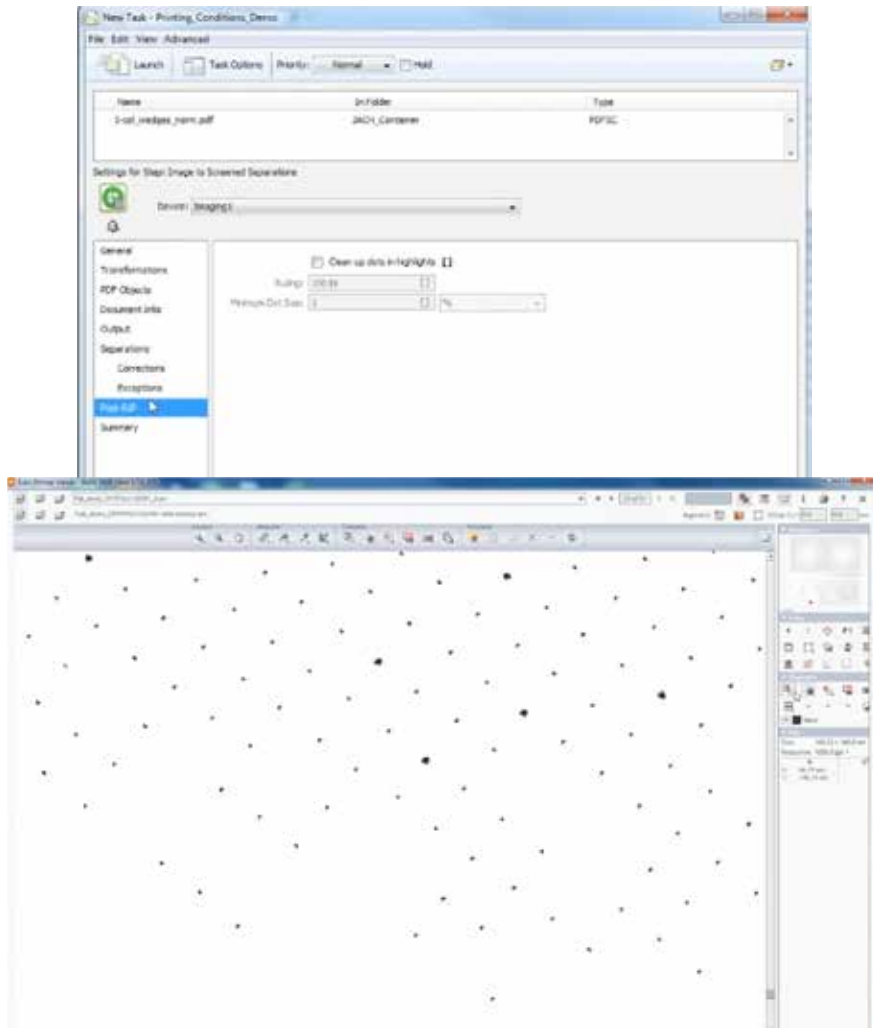
5

Min Dot Generation

Selecting the best minimum dot is currently a subjective process

The new minimum dot chart **simplifies and automates** the process of selecting the correct minimum dot.

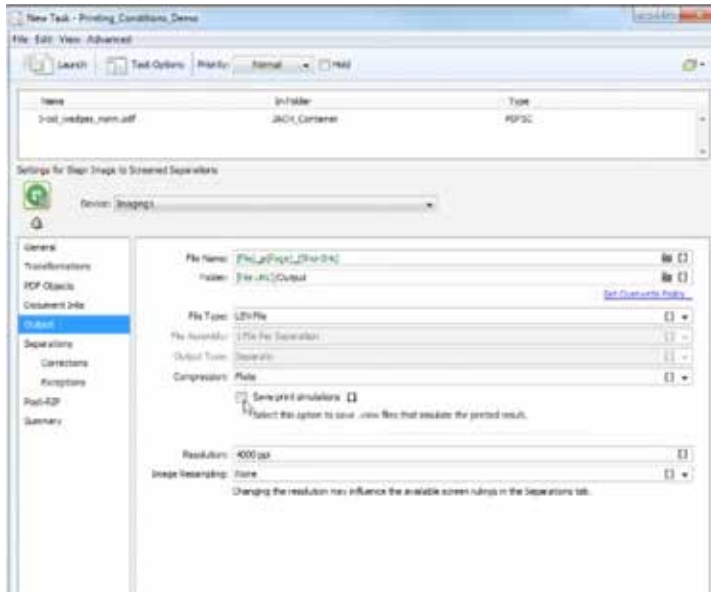
There is **198** different highlight options measured automatically with an Xrite i1i0 Interaction with the results is possible for the **expert level user**



Dot Clean Up

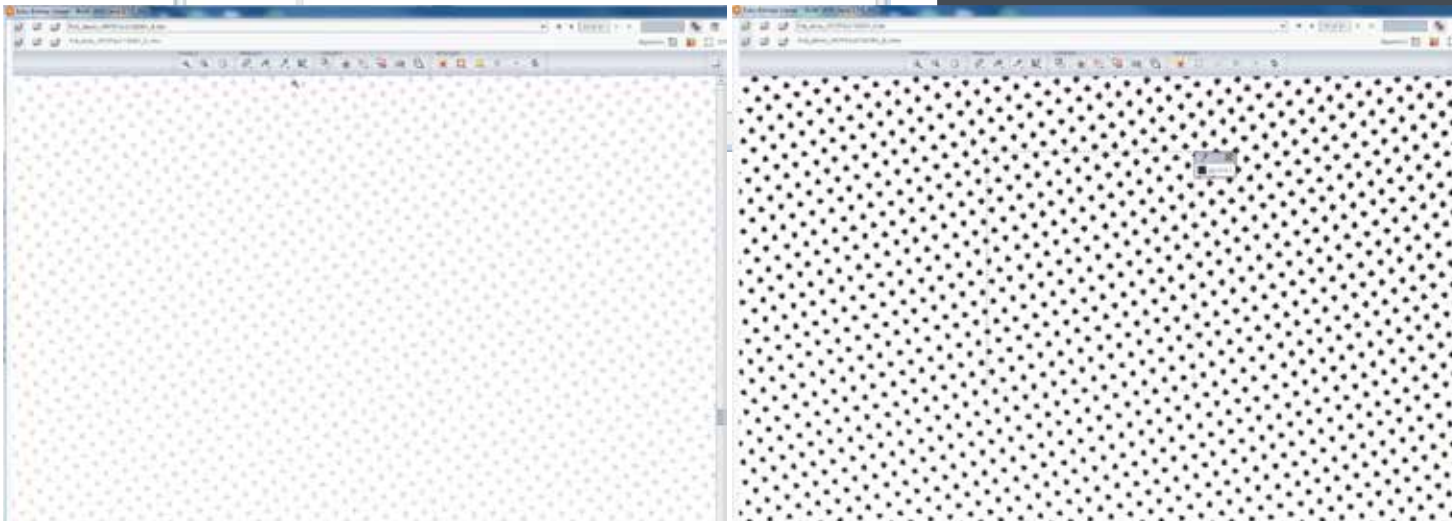
The removal of small artifacts commonly known as scum dots is typically manually removed in Photoshop

Dot Clean Up function **automatically** removes any scum dots. Removing the need for min dot retouching



Quality Control

The save print simulation mode on the Imaging Engine ticket converts the pixelated Crystal Screen to a preview file to enable quality control within Automation Engine Viewer



ESKO*