

Phoenix

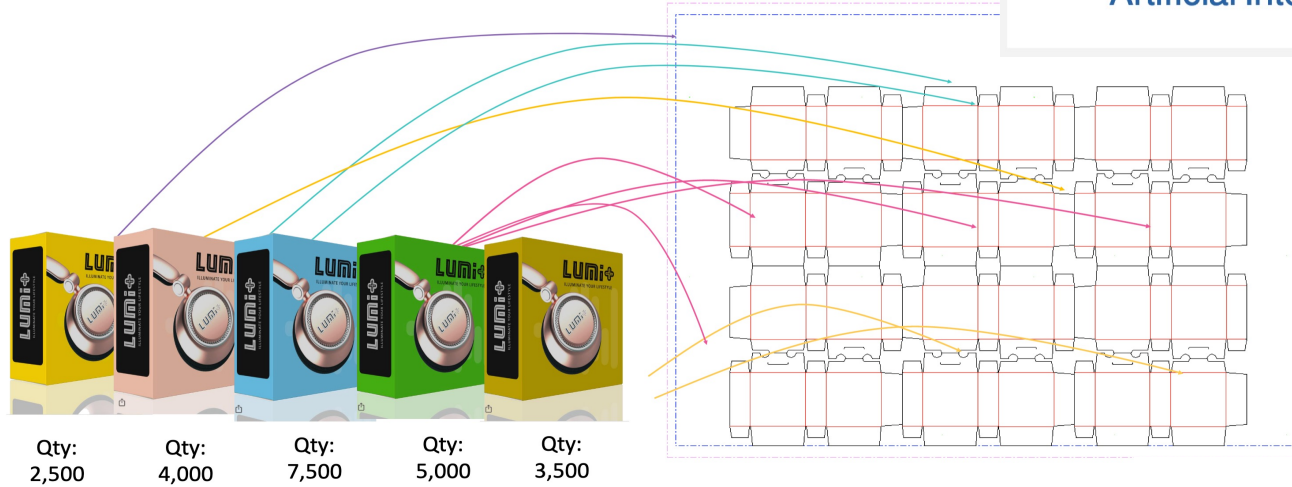
What's New in 23.03

Geert De Proost

Phoenix value proposition



Quickly derive the most cost effective production layouts with **Artificial Intelligent simulation**

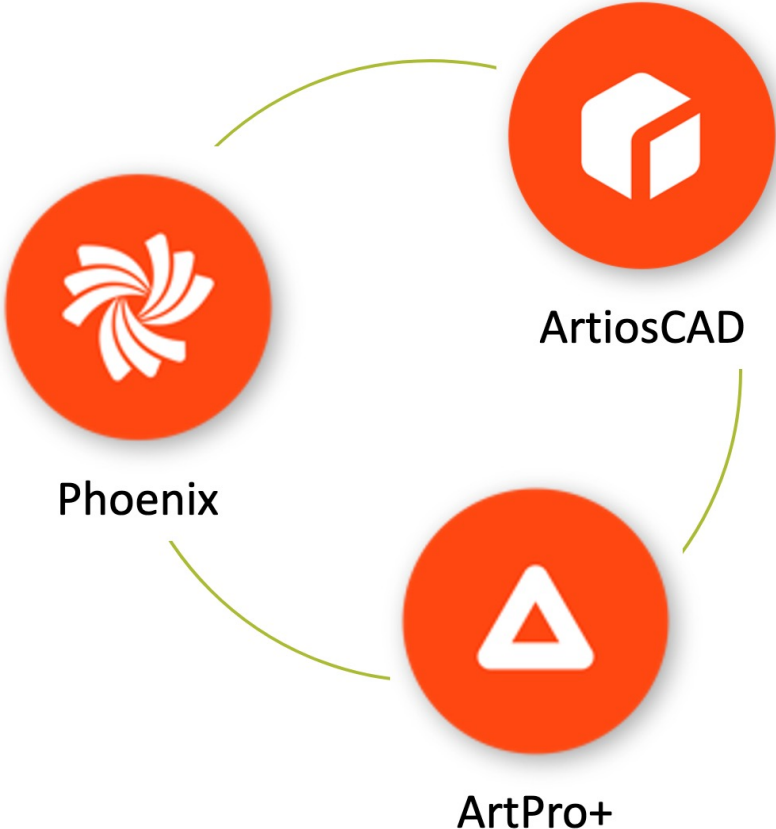


	Print Runs	Total Sheets	Time on Press	Time Diecutting	Total Cost
Manual Planning	17 runs	98,847 sheets	35h 12m 52s	25h 59m 38s	39,781.12 US\$
tilia phoenix	3 runs	93,031 sheets	14h 23m 35s	12h 18m 11s	31,784.75 US\$
	14 runs	5,816 sheets	20h 49m 17s	13h 41m 27s	

PHOENIX SAVES **7,996.37 US\$** OR **20.1 %** ON THIS JOB



Deep integration into the Esko software suite

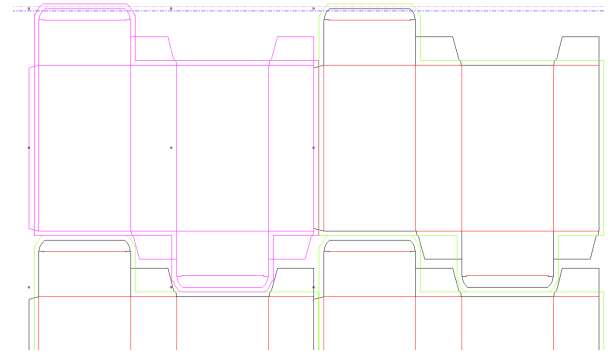
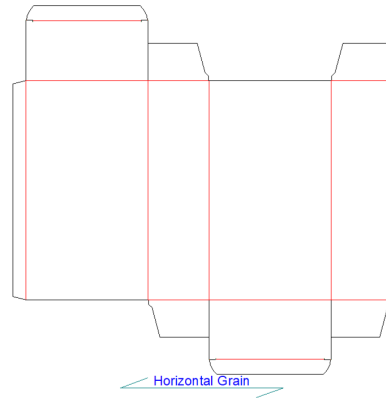
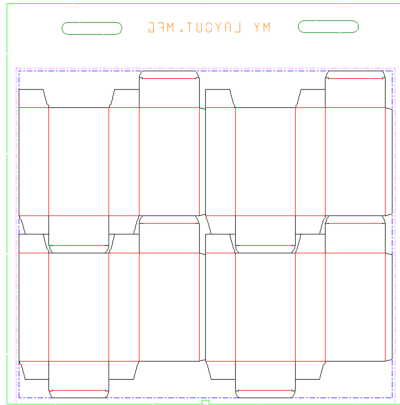


Integration with ArtiosCad



Reading ARD and MFG formats in Phoenix

- Phoenix is the only Estimation & Planning application to read ArtiosCAD native file formats
- All CAD lines are being pulled from both the 1-up ARD and at the MFG – including strip line, waste numbers and marks
- All embedded intelligence and metadata are retained
 - CAD orientation
 - Grain direction
 - Bleeds from CAD

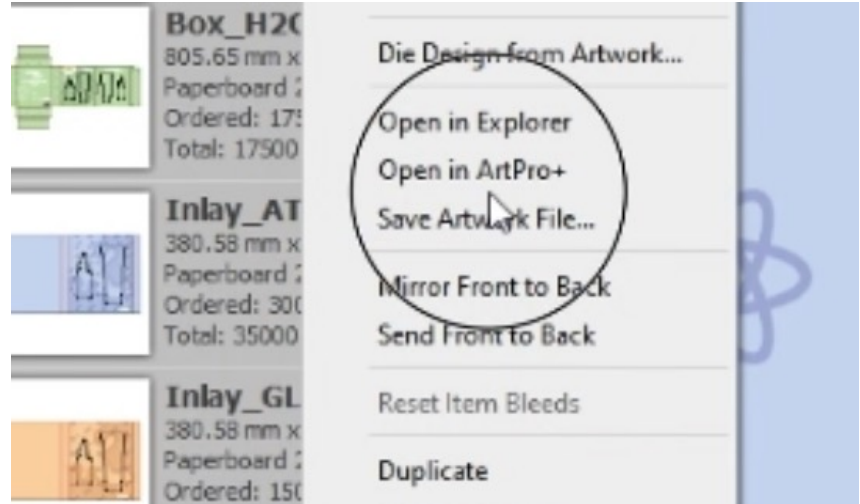


Reading ArtiosCAD native formats avoids time-consuming and error-prone manual work for the operator

Integration with ArtPro+

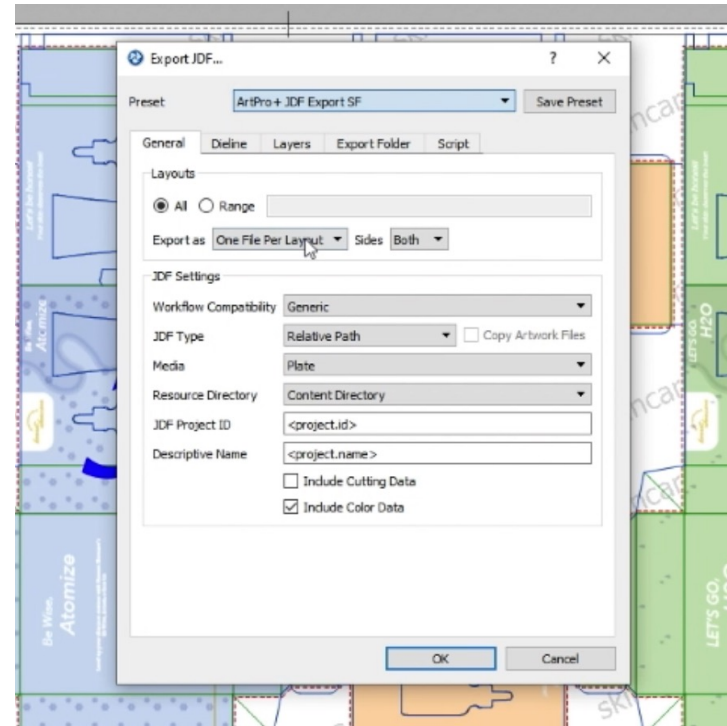
Open files in ArtPro+ directly from Phoenix

- “Open in ArtPro+” button to open a selected item in Phoenix straight into ArtPro+
- Saved changes are instantaneously updated in Phoenix



ArtPro+ interoperability

- New JDF and PDF Export Presets designed for ArtPro+ ensuring seamless interoperability with ArtPro+



Some other highlights from a
feature packed release...

Other highlights of Phoenix 23.03

- Double sided marks
- Conditional rules engine for marks
- Strip and Nick enhancements
 - E.g. facility to add nicks on diagonal die lines
- UX enhancements
 - setting to define what products should snap to when dragging items on a layout
 - Strongly improved snapping strength when dragging items

ESKO*

Thank you