

# MediaBeacon 21.03

Welcome to MediaBeacon's  
Installation Guide

03 - 2021

# Contents

- 1. Welcome to MediaBeacon's Installation Guide..... 3**
- 2. Copyright Notice.....4**
- 3. MediaBeacon Installation Guides..... 6**
  - 3.1. Installing MediaBeacon for Windows..... 6
  - 3.2. Running MediaBeacon as a Windows Service.....19
    - 3.2.1. Starting and Stopping MediaBeacon Running as a Service in Windows..... 23
- 4. MediaBeacon System Requirements..... 27**
  - Hardware..... 27
  - Software..... 27
    - Software Included in Installation Package..... 28

# 1. Welcome to MediaBeacon's Installation Guide

---

Welcome to MediaBeacon's guide for installing our product. This guide reviews installation and server-level configuration options of our product.

Using this Guide

- To navigate through this guide, use the # icons to expand the Table of Contents panel, and click the topic name to read that entry.
- To search across all topic for a text string, use the search field in the upper left corner.
- To download a PDF version of the complete guide, click the "PDF Version" link in the upper right corner of the page.
- To return to the list of all MediaBeacon documentation, click "Other MediaBeacon documentation" in the upper right corner of the page.

## 2. Copyright Notice

---

© Copyright 2020 Esko Software BV, Gent, Belgium

All rights reserved. This material, information and instructions for use contained herein are the property of Esko Software BV. The material, information and instructions are provided on an AS IS basis without warranty of any kind. There are no warranties granted or extended by this document. Furthermore Esko Software BV does not warrant, guarantee or make any representations regarding the use, or the results of the use of the software or the information contained herein. Esko Software BV shall not be liable for any direct, indirect, consequential or incidental damages arising out of the use or inability to use the software or the information contained herein.

The information contained herein is subject to change without notice. Revisions may be issued from time to time to advise of such changes and/or additions.

No part of this document may be reproduced, stored in a data base or retrieval system, or published, in any form or in any way, electronically, mechanically, by print, photoprint, microfilm or any other means without prior written permission from Esko Software BV.

This document supersedes all previous dated versions.

PANTONE® Colors displayed in the software application or in the user documentation may not match PANTONE-identified standards. Consult current PANTONE Color Publications for accurate color. PANTONE® and other Pantone trademarks are the property of Pantone LLC. © Pantone LLC, 2015

Pantone is the copyright owner of color data and/or software which are licensed to Esko to distribute for use only in combination with Studio Visualizer. PANTONE Color Data and/or Software shall not be copied onto another disk or into memory unless as part of the execution of Studio Visualizer.

This software is based in part on the work of the Independent JPEG Group.

Portions of this software are copyright © 1996-2002 The FreeType Project ([www.freetype.org](http://www.freetype.org)). All rights reserved.

Portions of this software are copyright 2006 Feeling Software, copyright 2005-2006 Autodesk Media Entertainment.

Portions of this software are copyright ©1998-2003 Daniel Veillard. All rights reserved.

Portions of this software are copyright ©1999-2006 The Botan Project. All rights reserved.

Part of the software embedded in this product is gSOAP software. Portions created by gSOAP are Copyright ©2001-2004 Robert A. van Engelen, Genivia inc. All rights reserved.

Portions of this software are copyright ©1998-2008 The OpenSSL Project and ©1995-1998 Eric Young ([eay@cryptsoft.com](mailto:eay@cryptsoft.com)). All rights reserved.

This product includes software developed by the Apache Software Foundation (<http://www.apache.org/>).

Adobe, the Adobe logo, Acrobat, the Acrobat logo, Adobe Creative Suite, Illustrator, InDesign, PDF, Photoshop, PostScript, XMP and the Powered by XMP logo are either registered trademarks or trademarks of Adobe Systems Incorporated in the United States and/or other countries.

Microsoft and the Microsoft logo are registered trademarks of Microsoft Corporation in the United States and other countries.

SolidWorks is a registered trademark of SolidWorks Corporation.

Portions of this software are owned by Spatial Corp. 1986 2003. All Rights Reserved.

JDF and the JDF logo are trademarks of the CIP4 Organisation. Copyright 2001 The International Cooperation for the Integration of Processes in Prepress, Press and Postpress (CIP4). All rights reserved.

The Esko software contains the RSA Data Security, Inc. MD5 Message-Digest Algorithm.

Java and all Java-based trademarks and logos are trademarks or registered trademarks of Sun Microsystems in the U.S. and other countries.

Part of this software uses technology by Best Color Technology (EFI). EFI and Bestcolor are registered trademarks of Electronics For Imaging GmbH in the U.S. Patent and Trademark Office.

Contains PowerNest library Copyrighted and Licensed by Alma, 2005 - 2007.

Part of this software uses technology by Global Vision. ArtProof and ScanProof are registered trademarks of Global Vision Inc.

Part of this software uses technology by Qoppa Software. Copyright © 2002-Present. All Rights Reserved.

All other product names are trademarks or registered trademarks of their respective owners.

Correspondence regarding this publication should be forwarded to:

Esko Software BV

Kortrijksesteenweg 1095

B - 9051 Gent

info.eur@esko.com

# 3. MediaBeacon Installation Guides

---

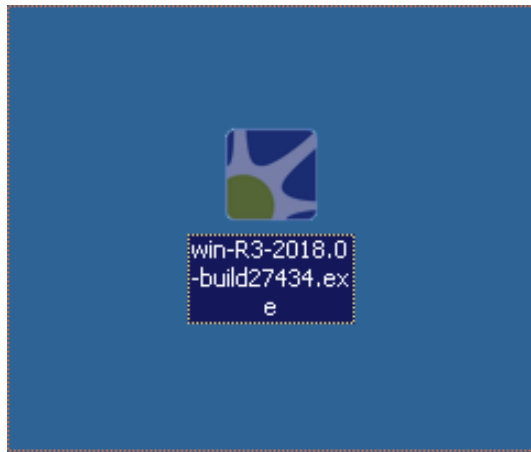
*MediaBeacon Installation References*

## 3.1. Installing MediaBeacon for Windows

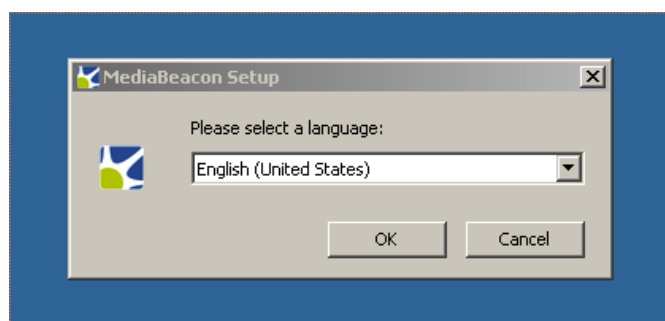
---

### Installing MediaBeacon on Windows

1. Double-click the installer application. This will be typically be located in the Downloads folder for the Windows user.



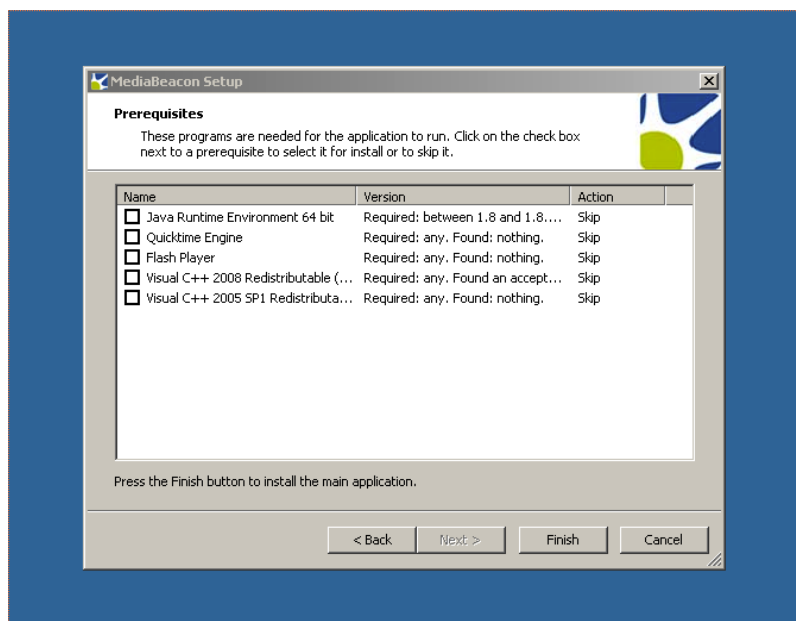
2. Select the language that you would like to use for the MediaBeacon Quick Install process and click "OK".

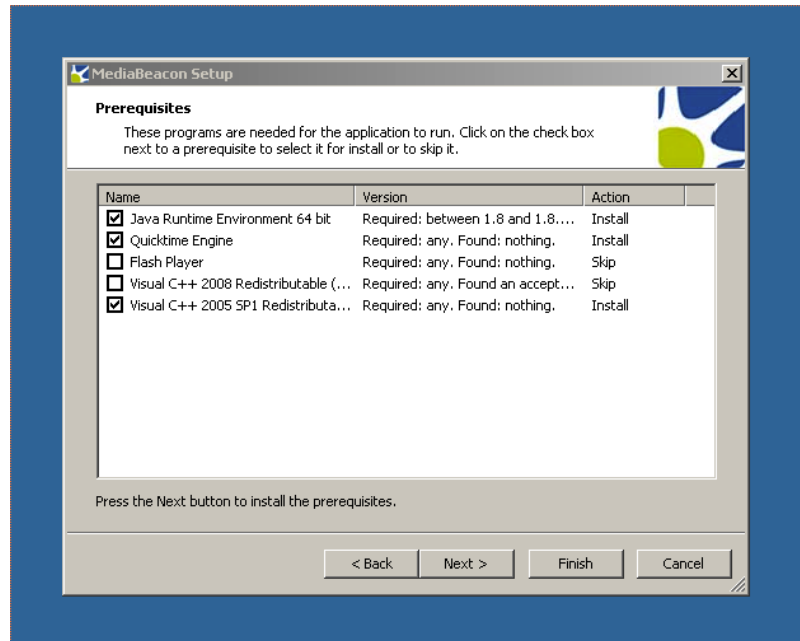


3. MediaBeacon Setup will first check that you have the prerequisite programs installed on your computer. The most common prerequisite programs are the Java Runtime Environment, Ghostscript, and QuickTime. The resulting dialog box will let you know if there are missing prerequisites.

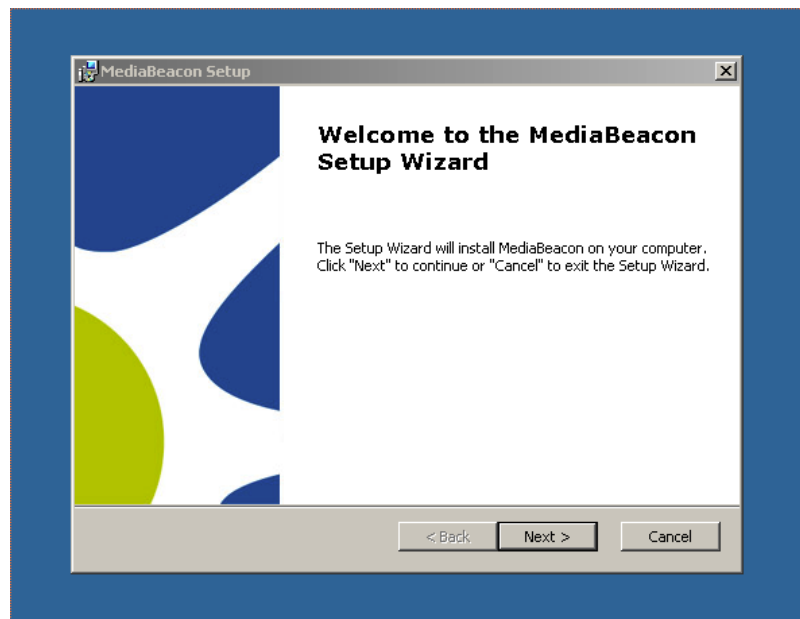


4. Click the "Next >" button to view a list of the missing prerequisites in the Prerequisites Wizard.
5. If there are no missing prerequisites, the Prerequisites Wizard will still appear, but the action for the prerequisite will display as Skip since it is already installed. If there are missing prerequisites, click the checkbox to the left of the prerequisite installation name and click "Next >" to install the selected application, or open the website for installation instructions if Flash is the selected application. Leave the checkbox blank to skip the installation of that prerequisite. **Note: For the quick install to be successful, 'Quicktime Engine' and 'Flash Player' are the only prerequisites that can be skipped (unchecked) without being installed, but they should only be skipped if you have a specific reason. If the prerequisite is already present, it will automatically be set to the 'Skip' action and the 'Version' column will indicate that an acceptable version is already in place.**



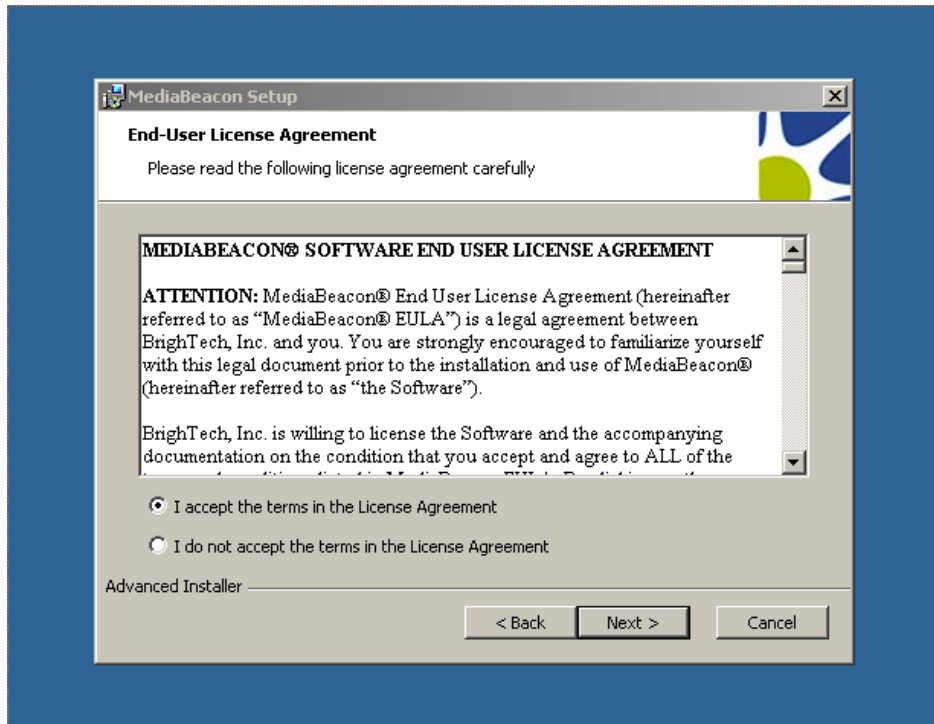


6. After installing the selected prerequisites, click "Finish".
7. The next dialog is the "MediaBeacon Setup Wizard." Click "Next >" to continue.

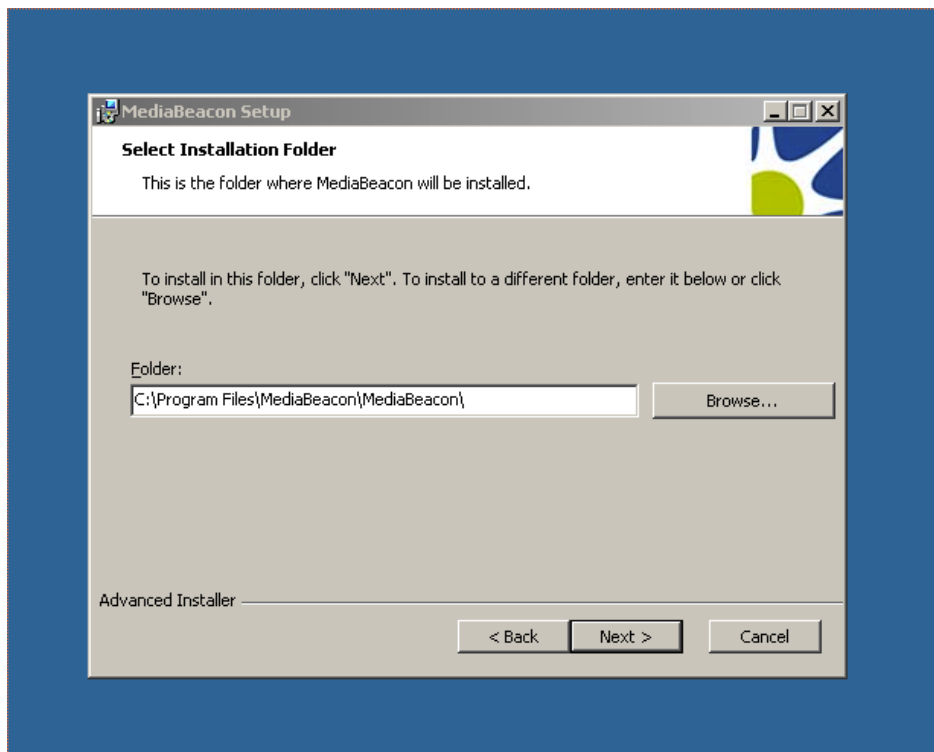


8. Read through the license agreement and accept the terms by clicking "I accept the terms in the License Agreement". Click "Next >" to continue with the installation.

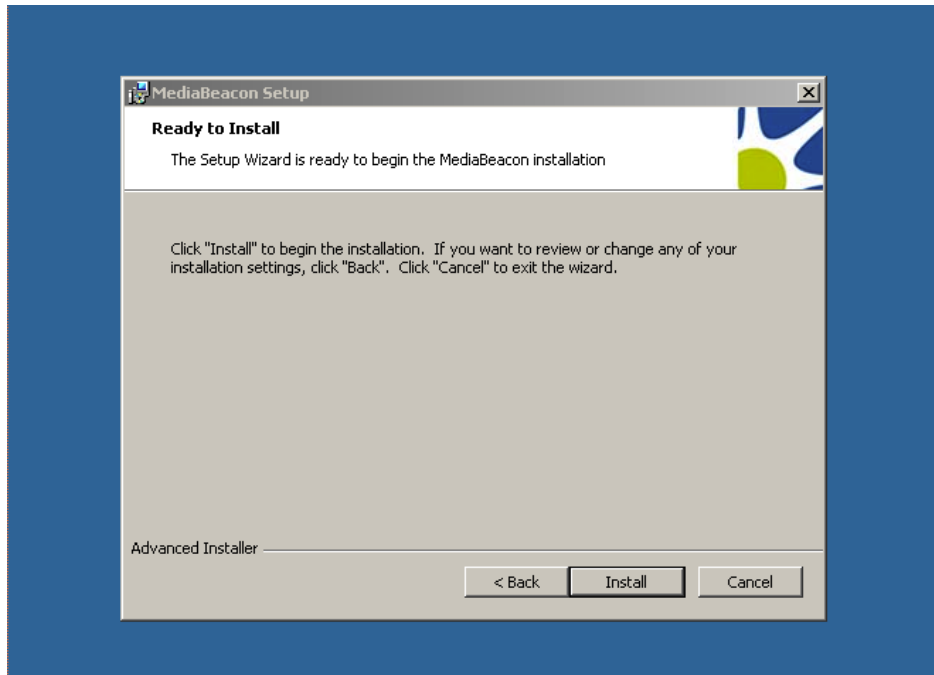




9. Next, you will need to select the Installation Folder that MediaBeacon will be installed into. By default, a folder named "MediaBeacon" will be created in your Program Files directory on your Windows system volume information folder. You can choose to use the created MediaBeacon folder or choose a different folder by clicking on the "Browse" button. Once you've selected the folder that MediaBeacon will be installed to, click "Next>".

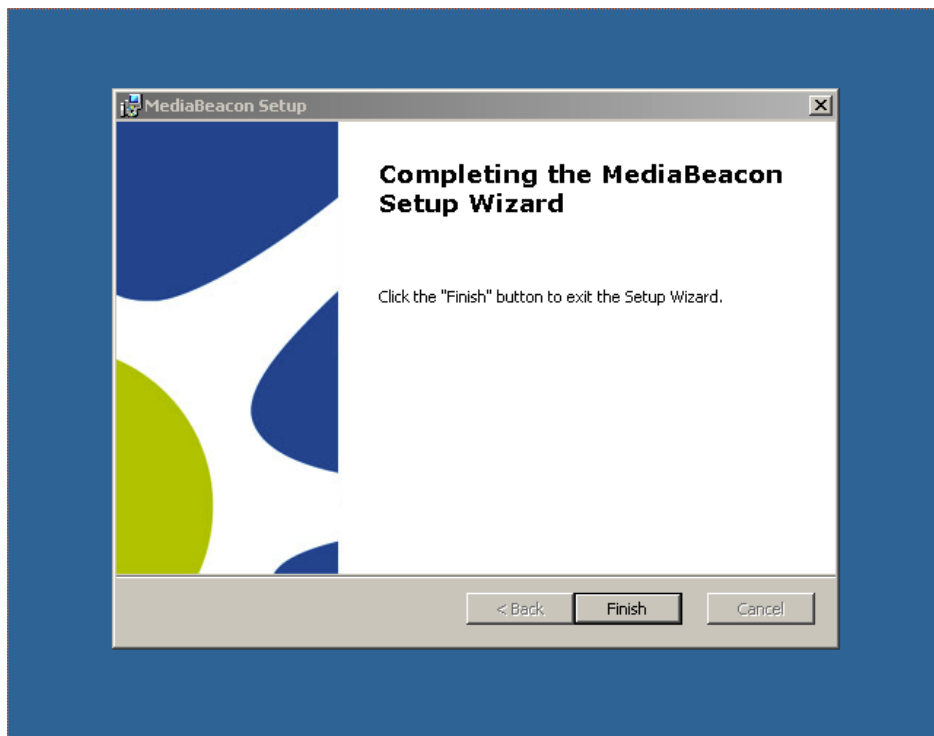


10. Click "Install" to install MediaBeacon.

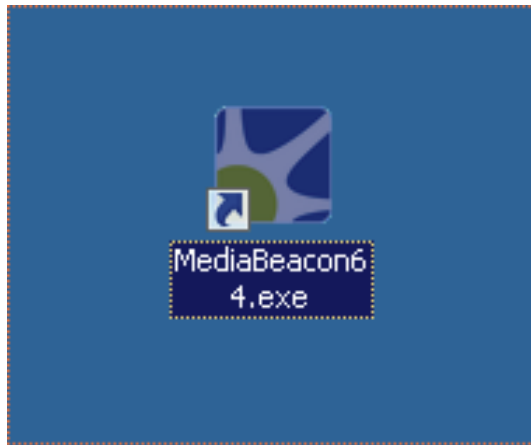


**Note:** If an "Installer Information" error occurs at this point, informing the user of "a problem with this Windows Installer package".

11. Click "Finish" to exit the MediaBeacon Setup Wizard.



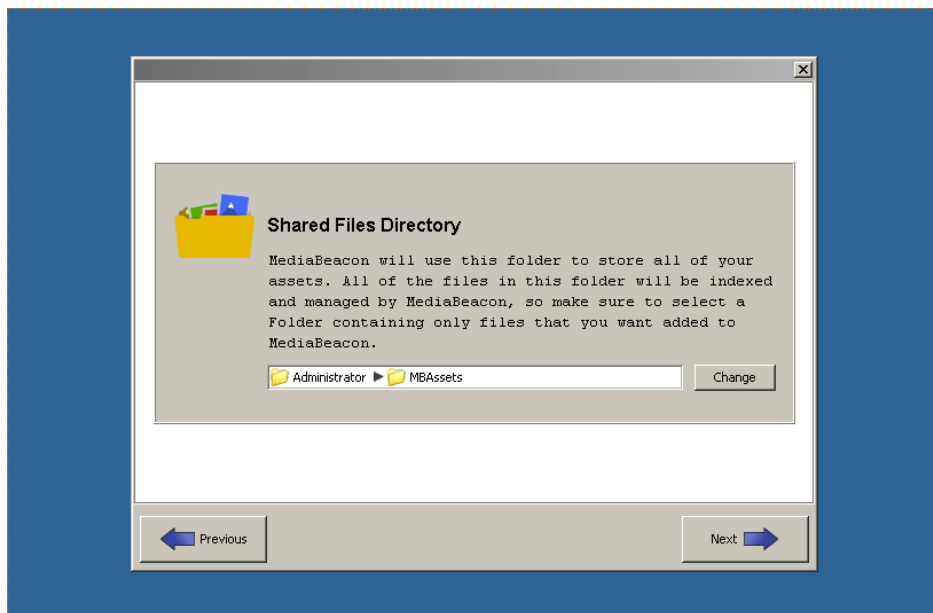
12. Next, double-click the desktop shortcut or navigate from the Start Menu to start the application.



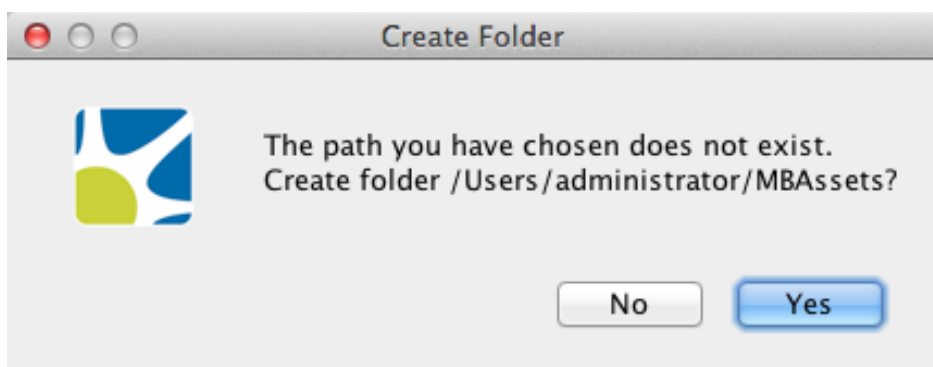
13. MediaBeacon will display several additional screens on the first run after installation. First, you will need to read through the license agreement, click "I agree to above license", and click "Next" to continue.



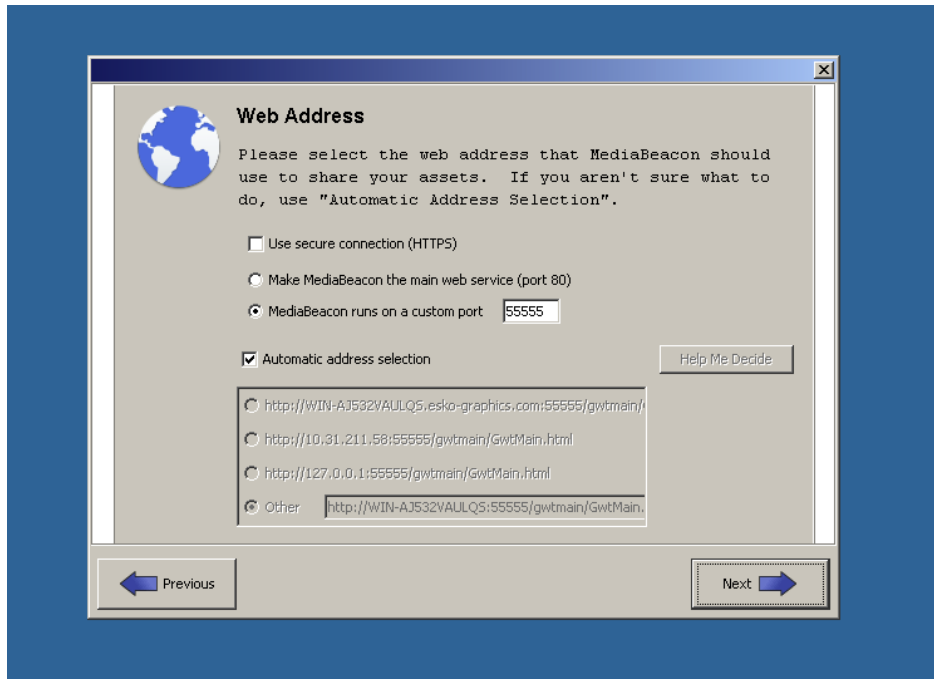
14. Next, select the "Shared Files Directory" that will store all of your assets. By default, a folder called "MBAssets" will be created in your Home directory. If you want to choose a different folder, click the "Change" button. When you have selected the desired folder to be the Shared Files Directory, click "Next" to continue.



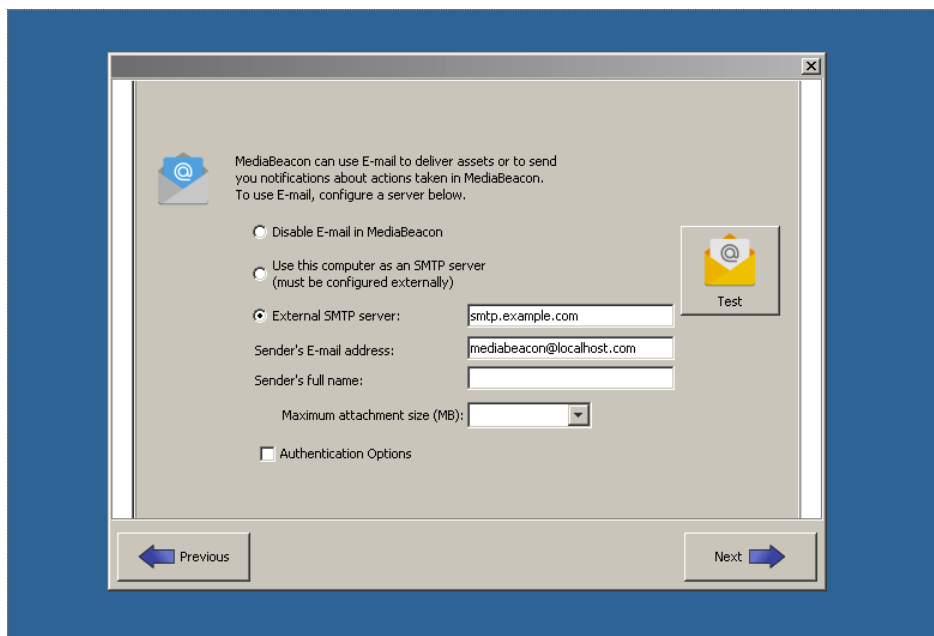
15. If the "MBAssets" folder does not already exist, MediaBeacon will ask permission to create it. Click "Yes" to create the folder.



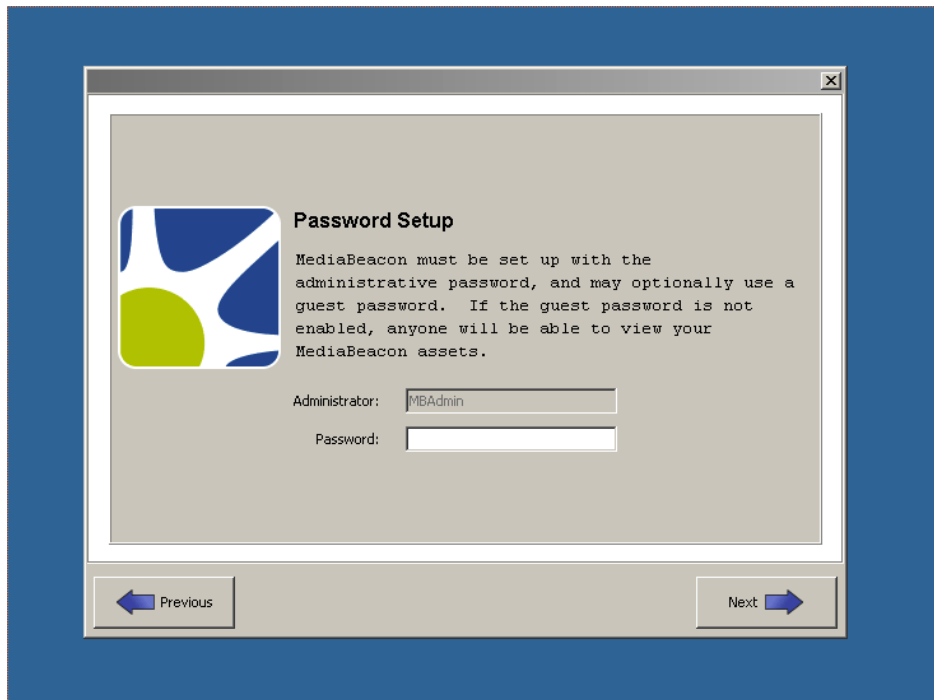
16. Next, the "Web Address" configuration dialog box will appear. Click "Next" to accept the defaults and use the "Automatic address selection".



- MediaBeacon allows you to use email notifications for various actions. The next screen allows you to set up email preferences. In the "External SMTP server" field, add the address of your SMTP server. In the "Sender's E-mail address" field, add the email address to use as the sender. In the "Sender's full name" field, add the name for the sender. Select a maximum attachment size (MB) from the drop down list that will prevent MediaBeacon from sending an email if it goes over the size limit. After selecting your preferences, click "Next".

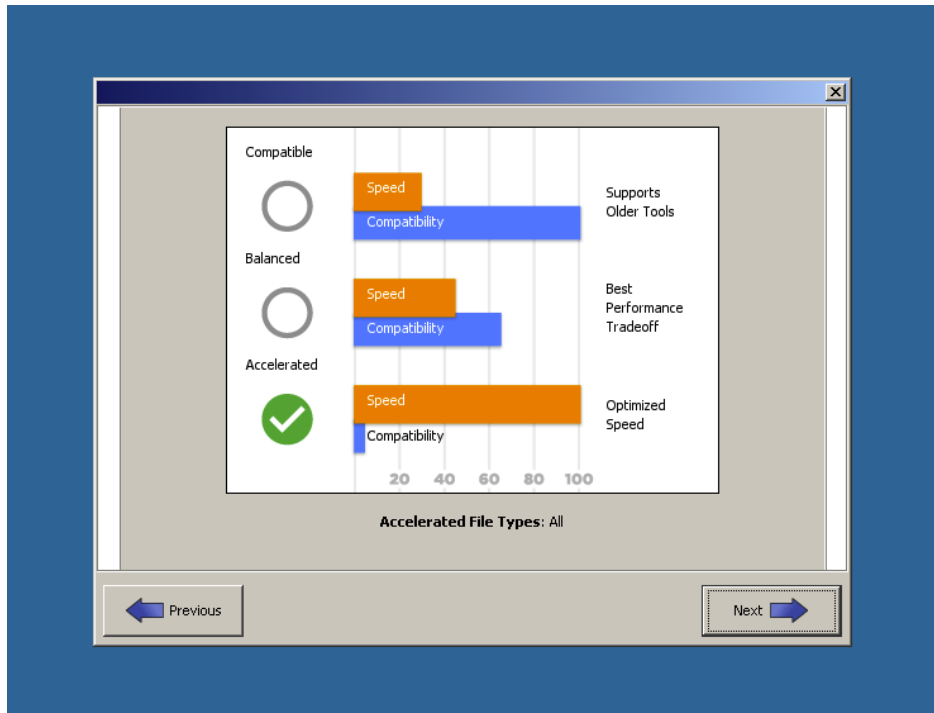


- Next, the "Password Setup" dialog box will appear. Here you must specify the MAdmin, or root, password. This password is used to login to MediaBeacon to perform administrative tasks. Click "Next" after you add your password.

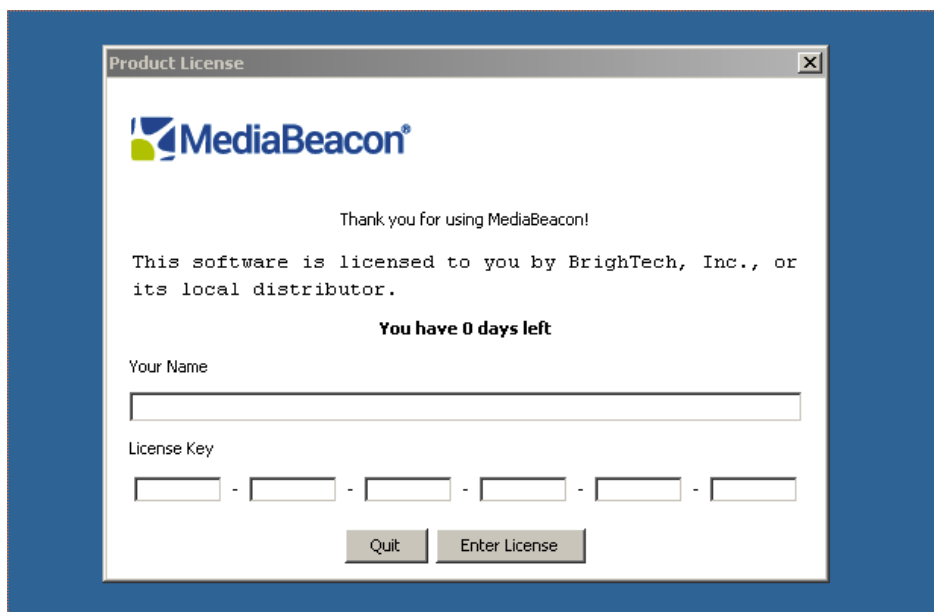


19. Next, you will need to select the proper XMP Acceleration mode for your environment. You should select "Accelerated" unless you have been told otherwise by your MediaBeacon representative.

***Note: In order to manage a large number of files, MediaBeacon has developed a unique method of accelerating the write of the metadata for each file into the file system. This acceleration works outside of the standard XMP specification, but is crucial for reasonable response times on larger databases. This setting only affects the way the files are stored on the server. Files are always downloaded in a completely compatible format.***



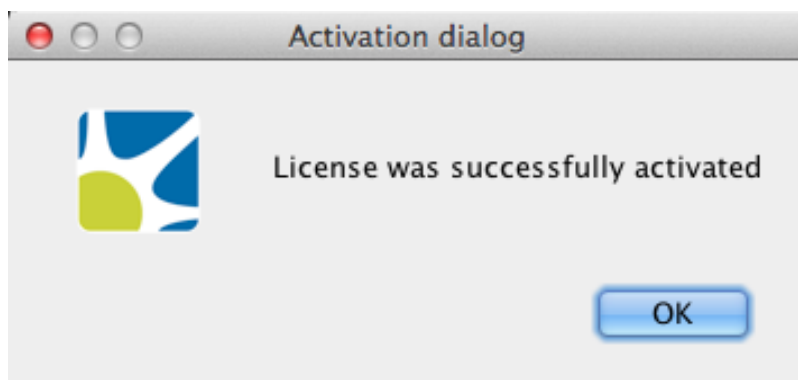
- 20. Click "Next" to finish the installation and launch MediaBeacon.
- 21. The first time you launch the software, you will be required to enter a valid license. Your MediaBeacon representative should provide you with the license and should be contacted if you have any issues activating the software. Enter the license information and click "Enter License". **Note: The name of the licensor is case-sensitive**



- 22. You must activate the license immediately, either by phone or online via the "Activate" and then "Activate Now" buttons. **Note: If your server does not have external internet access, you can use the Activate by phone option. For this option, you will call MediaBeacon and get a string to enter over the phone to activate**

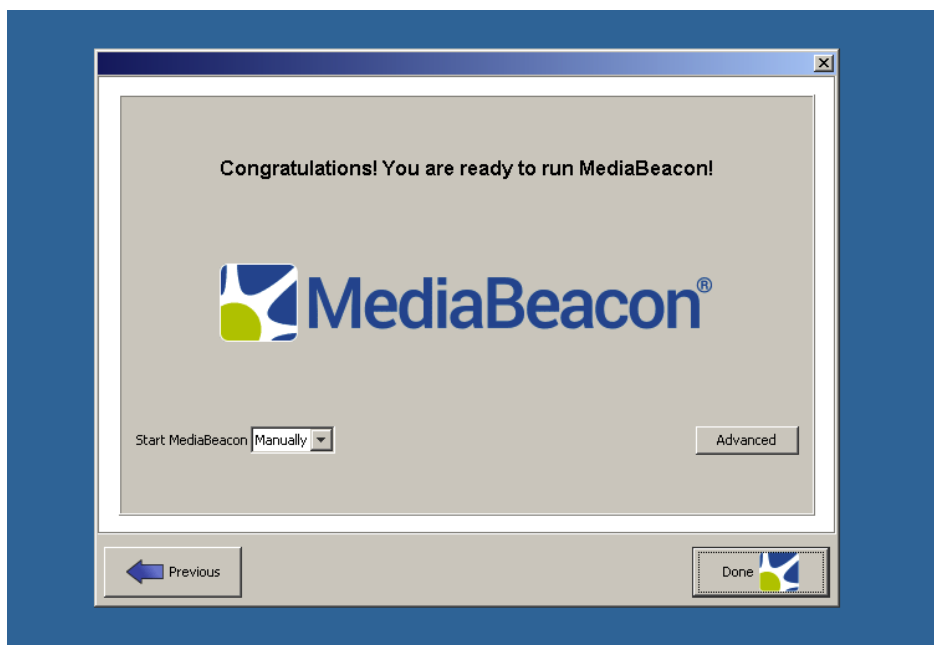
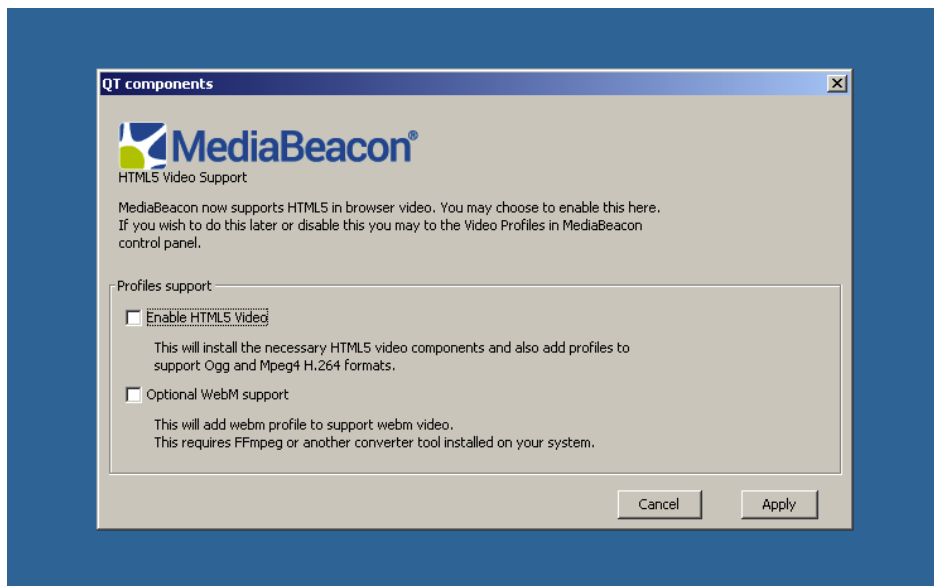


**23.** Successful activation allows full use of the application for the allotted license period.

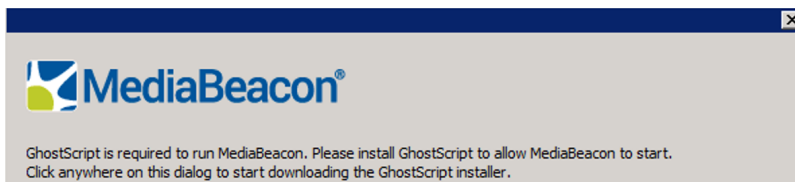


**24.** To configure HTML5 video options. Select HTML5 to use HTML5 in the web interface to help play videos. Optional WebM support allows you to use an external video converter but requires configuration to work properly. You can leave these blank or click "Apply" to apply the selected options and then click "Done".



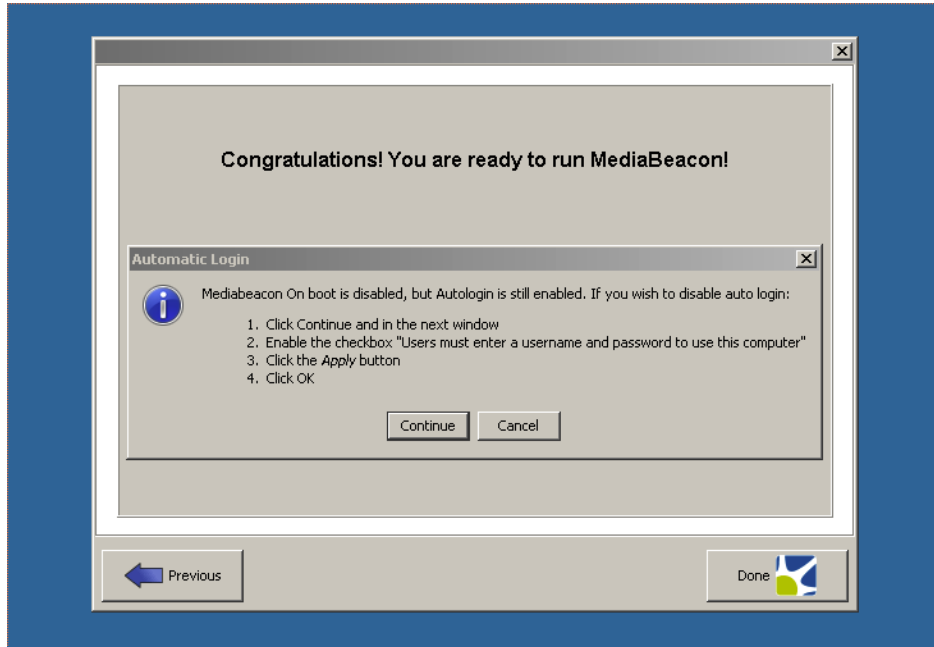


25. After confirming your settings, press Start MediaBeacon. A prompt window will appear for users to install GhostScript. Click the window will download the installer to your system.

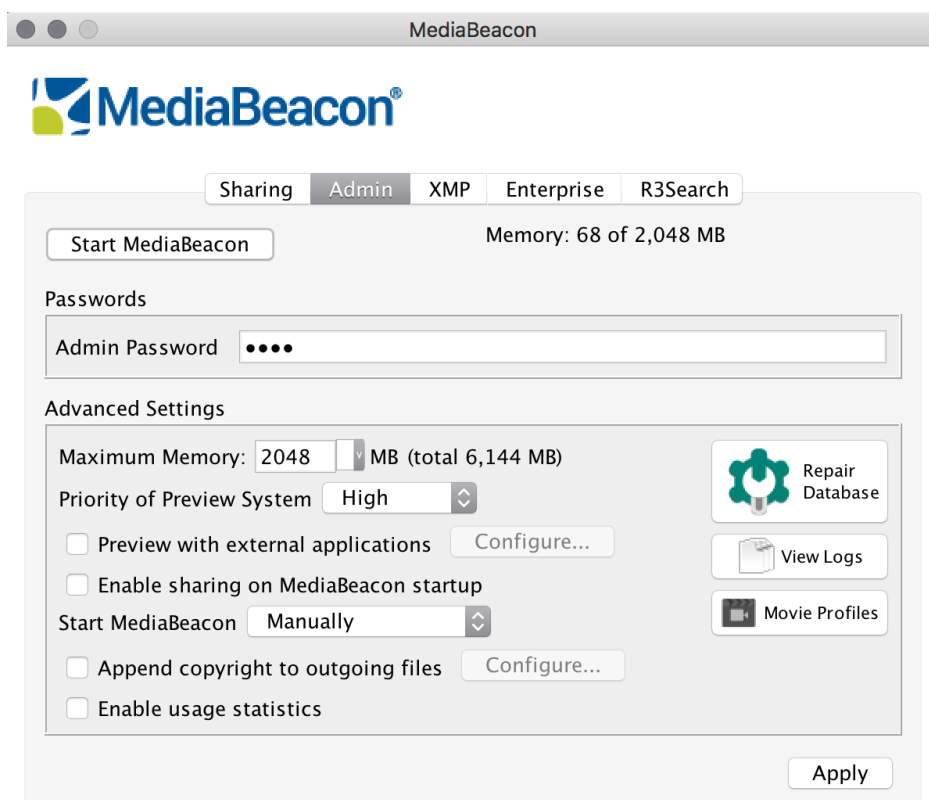


26. Run through and install GhostScript through the downloaded file. Then close the MediaBeacon application, re-open it, and press Start MediaBeacon.

27. The following dialog will provide you with the option and instructions for disabling auto login, if desired. Click "Continue" to go through the steps of disabling auto login, or click "Cancel" to keep auto login enabled. Then, click "Done" and you will be ready to configure your database and related settings in the Enterprise page.



28. Then, click "Done" and you will be ready to configure your database and related settings in the Enterprise tab of the admin GUI.



**\*Please Note: After installing MediaBeacon, the first start will take several minutes, do not exit out or stop the process until it is complete. You can view progress at the bottom of the admin GUI.**

## 3.2. Running MediaBeacon as a Windows Service

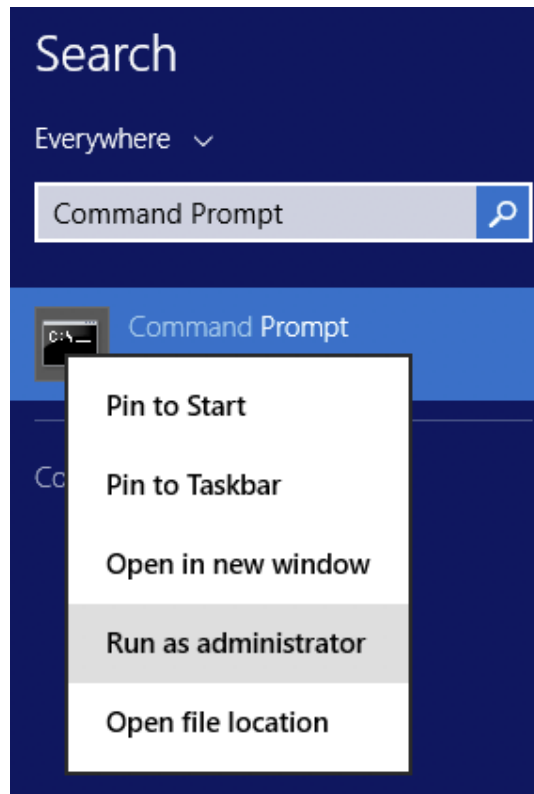
MediaBeacon can be run as a service on Windows. The following are intended to be basic setup instructions.

Note that these instructions will need to be followed after any installation or upgrade of the MediaBeacon application.

### Windows Service Installation

1. Ensure MediaBeacon is configured and running properly before proceeding with service installation steps.
  - a. Note: To run MediaBeacon as a service, the service must be installed using the same Windows user account that was used for the initial MediaBeacon application installation
2. Stop MediaBeacon:
  - a. In the MediaBeacon Server GUI application.
    - a. Under the "Admin" tab: Click "Stop MediaBeacon".
  - b. Open the Task Manager:
    - a. Ensure that no tasks named "Java(TM) Platform SE Binary" are running.
  - c. Exit the MediaBeacon Server GUI application.

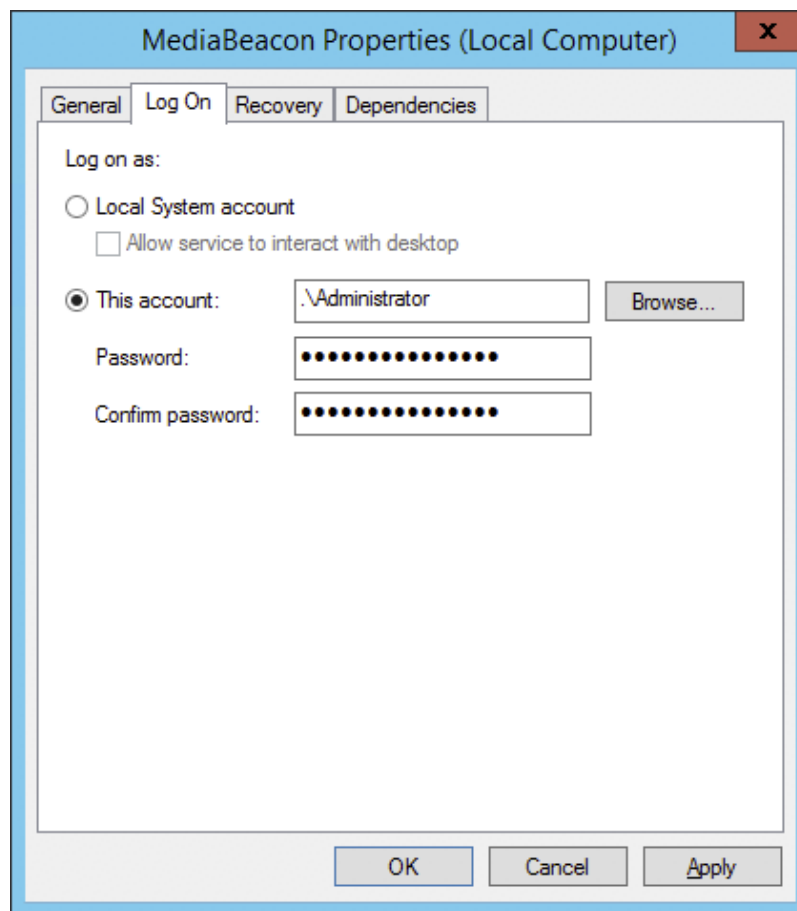
3. Open a command prompt. The application must be run as the "Administrator". To do so:
  - a. Press the windows key
  - b. Click the search icon, enter "Command Prompt"
  - c. Right-click Command Prompt and choose "Run as administrator"



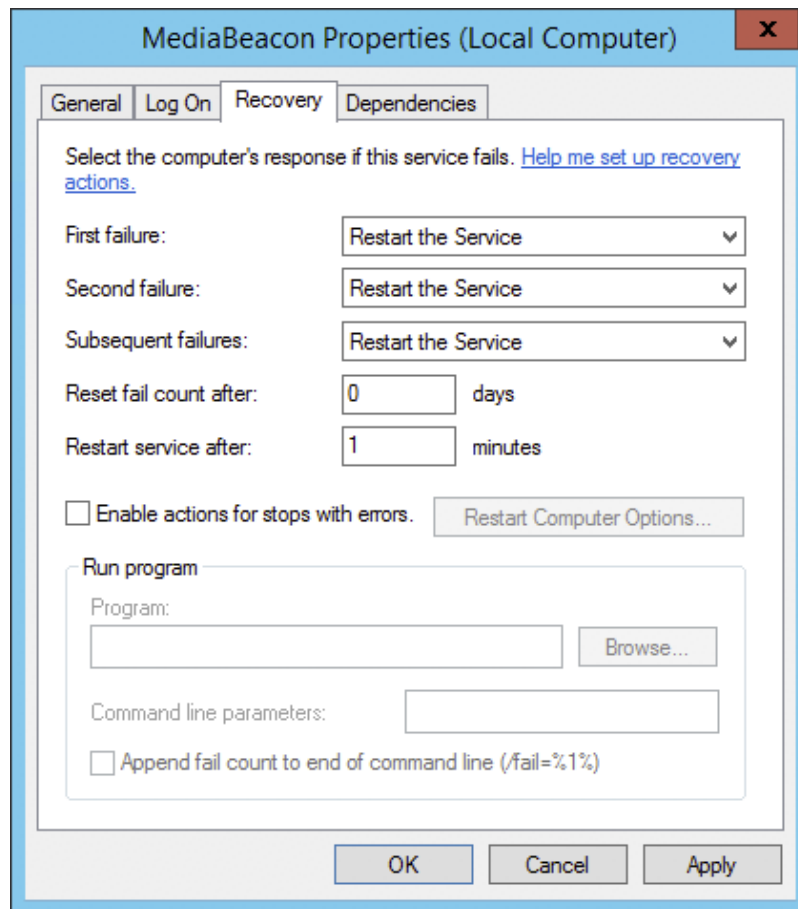
4. Determine if MediaBeacon services are installed on the system.
  - a. `sc query mediabeacon`
5. If any service for MediaBeacon is shown:
  - a. Change directory to the MediaBeacon installation, which is typically C:\Program Files\MediaBeacon\MediaBeacon.
    - a. `cd C:\Program Files\MediaBeacon\MediaBeacon`
  - b. Uninstall using the following command.
    - a. `bin\prunsrv.exe //DS//mediabeacon`
6. Edit etc\mb\_inst.bat.
  - a. Notes:
    - a. Ensure you are using a plain text editor.
    - b. In a standard install this is located at: C:\Program Files\MediaBeacon\MediaBeacon\etc\mb\_inst.bat.
  - b. Confirm that the various file paths to MediaBeacon's binaries are accurate. The C:\Program Files\mediabeacon\mediabeacon strings should be replaced with the actual install location if MediaBeacon is installed to a non-default location:
    - a. PR\_INSTALL line.
    - b. PR\_CLASSPATH line, multiple paths.

- c. PR\_LIBRARYPATH line, multiple paths.
      - d. The line under "REM Install Service".
      - e. PR\_JVMOPTIONS line, the C:\Program Files\MediaBeacon\MediaBeacon strings should be replaced with the actual install location if MediaBeacon is installed to a non-default location:
        - a. 

```
-Dmb.root=C:\Program Files\MediaBeacon;-Dmb.force.mb.service=true;-Dfile.encoding=UTF-8;
```
    - c. Update the PR\_JVMMX variable to match the "Maximum Memory" set on the Admin tab of the MediaBeacon Server GUI application (which, in turn, should be set to a value appropriate to the server's use and resources). The default value of 4096 for the PR\_JVMMX variable typically matches the default in the MediaBeacon application. If you're unsure of a proper value for your environment, please contact MediaBeacon Support.
    - d. Do NOT, codify the PR\_SERVICEUSER and PR\_SERVICEPASSWORD lines. These will be set in subsequent steps.
  7. In the Command Prompt, run etc\mb\_inst.bat to install the service.
    - a. `etc\mb_inst.bat`
    - b. Note, use "Run as administrator" method, as above.
  8. Set MediaBeacon service account information:
    - a. Open the Services application.
    - b. Right-click MediaBeacon service, choose "Properties".
    - c. Click "Log On" tab.
    - d. Enter the username and password of the windows user that the service will be run under. Note: This must match the Windows user account that was used for initial application install.
    - e. Click "Apply", Click "OK".



9. Optional: Set the MediaBeacon service's Recovery options:
  - a. Open the Services application.
  - b. Right-click MediaBeacon service, choose "Properties".
  - c. Click "Recovery" tab.
  - d. First failure: Restart the Service.
  - e. Second failure: Restart the Service.
  - f. Subsequent failures: Restart the Service.
  - g. Reset fail count after: 0 days.
  - h. Restart service after: 1 minutes.
  - i. Click "Apply", Click "OK".



- j. Start MediaBeacon service: See instructions below.

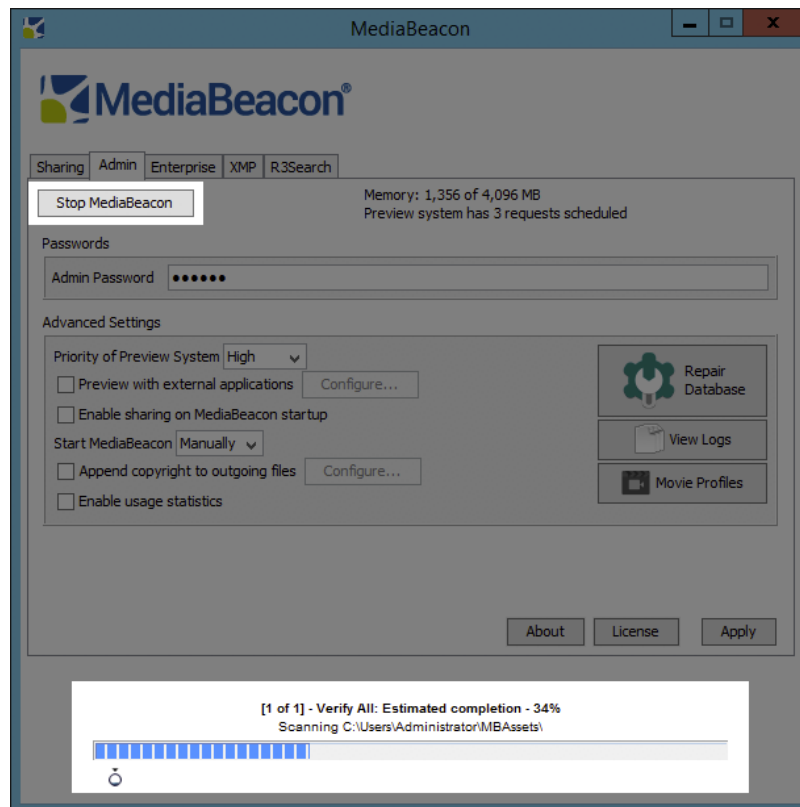
### 3.2.1. Starting and Stopping MediaBeacon Running as a Service in Windows

#### Starting

1. Open "Services" application:
  - a. Right-click MediaBeacon service, choose "Start".
  - b. MediaBeacon is now starting and needs no further intervention.
2. OPTIONAL: to monitor MediaBeacon's startup:
  - a. Open MediaBeacon Server GUI application.



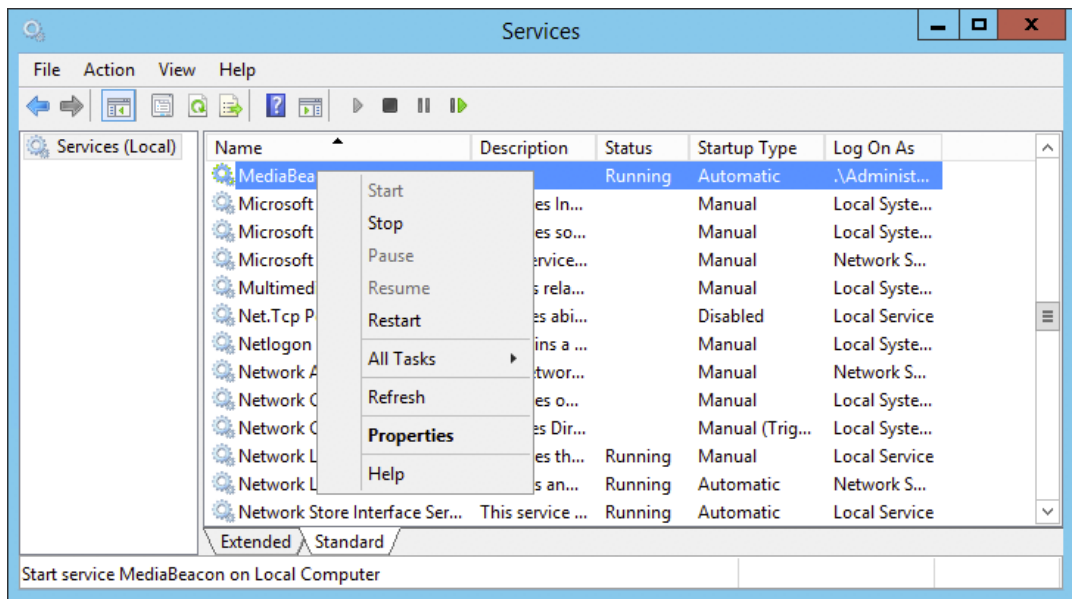
- a. In the MediaBeacon Server GUI application, startup is indicated by
  - a. The Start/Stop button (Under the "Admin" tab) is labeled "Stop MediaBeacon".
  - b. The fly out panel is displayed.



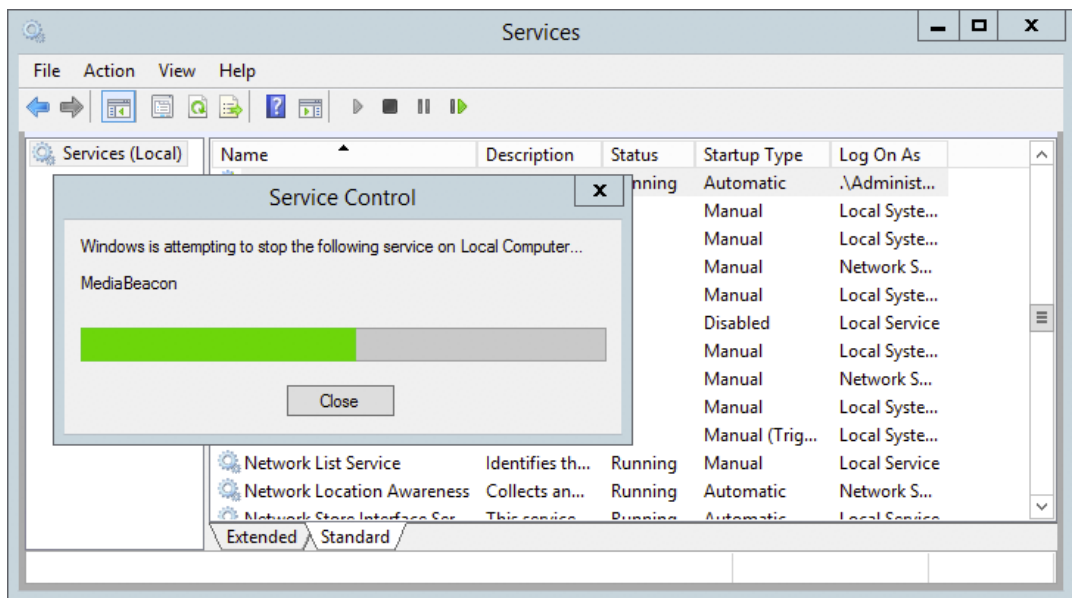
## Stopping

1. Open "Services" application:
  - a. Right-click MediaBeacon service, choose "Stop".



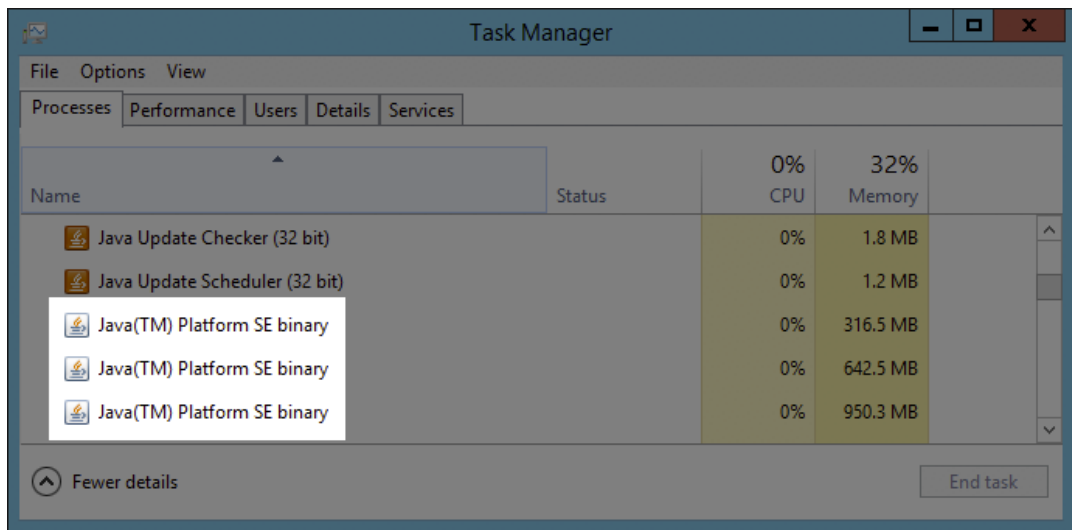


b. Wait for shutdown progress bar to finish.

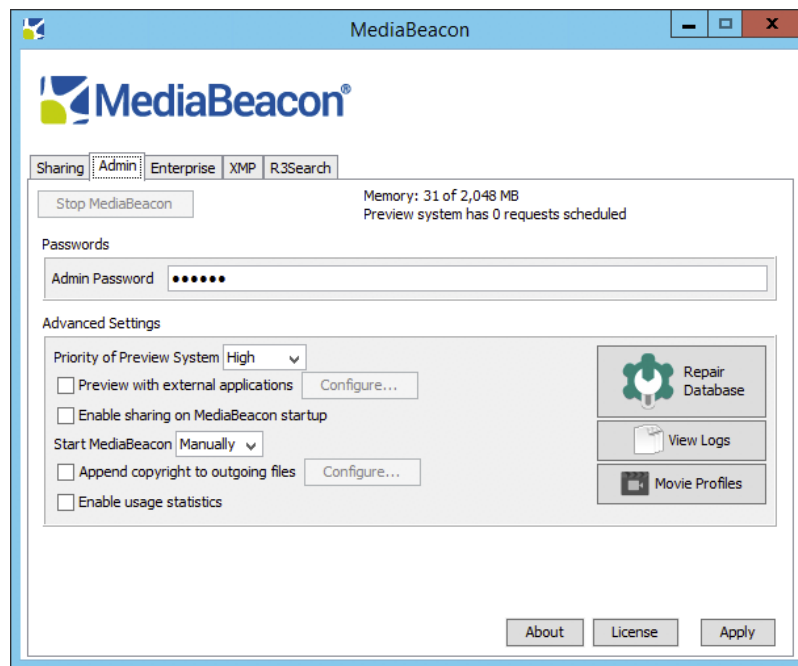


2. Open "Task Manager" application.

a. Ensure that no tasks named "Java(TM) Platform SE Binary" are running.



3. Shutdown MediaBeacon Server GUI application, if applicable:
  - a. Under the "Admin" tab: The Start/Stop button will be greyed out and say "Stop MediaBeacon" (indicating that is shut down)



- b. Exit the MediaBeacon Server GUI application using the "X" icon in upper left of application window.

# 4. MediaBeacon System Requirements

---

## Hardware

---

The following are the minimum requirements for MediaBeacon on a distributed system configuration with roughly 500k assets and about 200 concurrent users. MediaBeacon requires high throughput and low latency connections of no more than 1500ms for database access, 1000ms for disk access, and 5ms for connections to distributed components. These are minimum requirements, so hardware capabilities can be increased as needed.

Hardware recommendations for the production, staging, and development environments in a distributed setup are:

Server Type	Production	Staging	Development
MediaBeacon Primary Server	16GB RAM, 8 Core CPU	8GB RAM, 4 Core CPU	4GB RAM, 2 Core CPU
Enterprise Search Engine	16GB RAM, 8 Core CPU	8GB RAM, 4 Core CPU	N/A
User Concurrency Pack	16GB RAM, 4 Core CPU (each)	8GB RAM, 4 Core CPU (each)	N/A
Preview	16GB RAM, 8 Core CPU	8 GB RAM, 4 CPU	N/A

## Software

---

### Operating Systems

- Windows Server 2008 R2+
- MacOS 10.10+

### Supported Database Types

- Microsoft SQL Server 2008+
- MySQL5.5+

### Supported Browsers

- Chrome 80+
- Mozilla Firefox 75+
- Safari 12+
- Microsoft Edge
- Apple iOS 12.X+
- Android 9.0+

### **Compatible Versions of Third Party Integrations**

- Aspera 3.7
- Vantage 5+ with license for Vantage Transcode, Vantage Analysis, and Metadata Conversion
- Microsoft Office 2011+
- LibreOffice

### **Software Included in Installation Package**

- QuickTime x86, 7.1.0.210
- Java JRE 8, x64, 1.8.0\_45
- Graphicsmagick, 1.3.18
- Imagemagick, 7.0.3
- Visual C++ Redistributable 2005 SP1, 8.0.56336
- Visual C++ Redistributable and 2008, 9.0.21022

### **No Longer Supported**

- Chrome 47-79
- Firefox 43-74
- Safari 9.0-11
- Internet Explorer