

What's new in  
Imaging Engine, Print  
Control Wizard,  
Curves & Screening  
& Flexo Engine 22.03

# Imaging Engine



# Calculate Ink Key Settings(CIP3) – Extra Paper Parameters

## Paper parameters for Heidelberg presses

Following parameters were added to the *Paper Data* tab and are Heidelberg proprietary CIP3 extensions:

- *Add paper parameters for Heidelberg presses*
- *Paper Name*
- *Paper Type Front*
- *Paper Type Back*
- *Grain Direction*

```
/HDMPaper CIP3BeginPrivate  
/HDMGrainDirection /XDIRECTION def  
/HDMPaperName (Glossy) def  
/HDMPaperTypeBack /mattcoated def  
/HDMPaperTypeFront /glosscoated def  
CIP3EndPrivate
```

CIP3 (\*.ppf) file content

Default - Calculate Ink Key Settings (CIP3)

File View Advanced

Device: RDVMAE23

General  
Transformations  
PDF Objects  
Processing Steps  
Inks  
Sizes and Offsets  
Production Data  
Paper Data  
Output  
Summary

Weight: [ ]  
Thickness: [ ]  
Type: [ ]

Color L: [ ]  
a: [ ]  
b: [ ]

Add paper parameters for Heidelberg presses [ ]

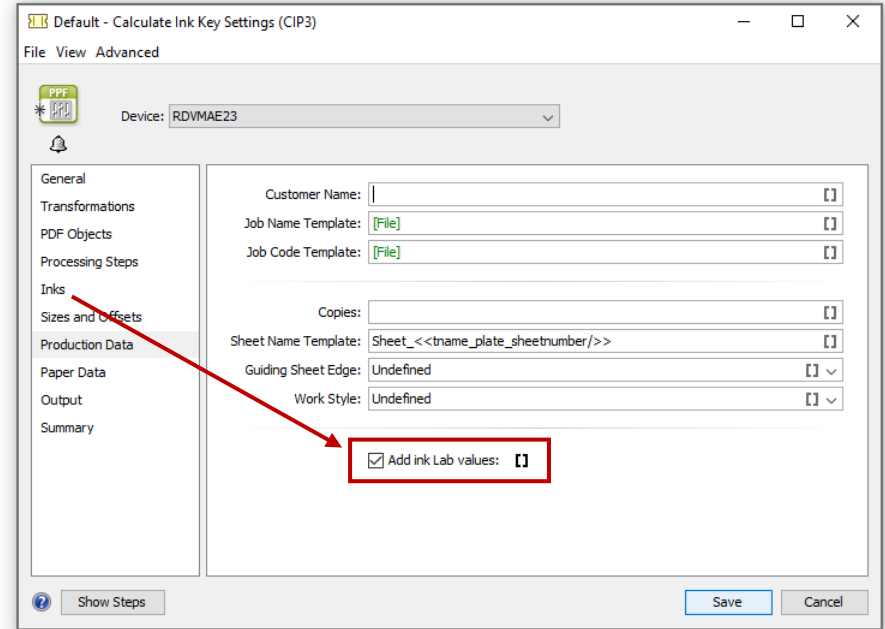
Paper Name: Glossy [ ]  
Paper Type Front: Gloss Coated [ ]  
Paper Type Back: Matt Coated [ ]  
Grain Direction: Along X Direction [ ]

Show Steps Save Cancel

# Calculate Ink Key Settings(CIP3) – Ink Lab values

## Ink Lab values

- The *Add ink Lab values* option offers the possibility to add the Lab values of the selected inks to the CIP3 (\*.ppf) file
- The corresponding key in the CIP3 file (\*.ppf) is *CIP3AdmInkColors*
- Detailed info on how these Lab values are calculated can be found in the online user documentation
- In case the values cannot be calculated the task will end with a warning and a comment starting with *%CIP3AdmInkColors...* will be added to the CIP3 (\*.ppf) file with more detailed info

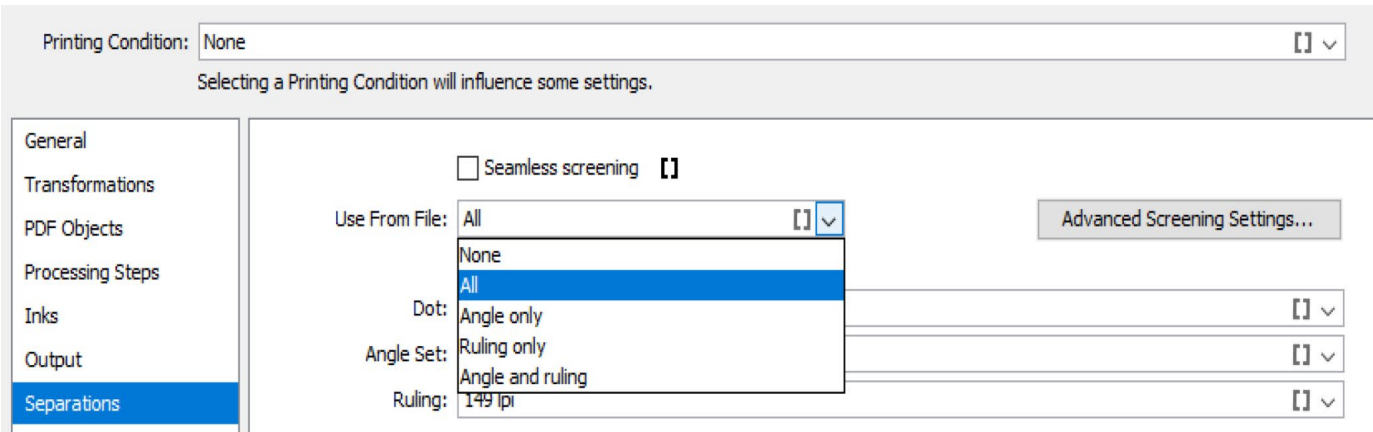


### CIP3 (\*.ppf) file content

```
CIP3BeginFront
/CIP3AdmSeparationNames [ (Cyan) (Magenta) (Yellow) (Black) ] def
/CIP3AdmInkColors [ [54.9885 -36.9731 -50.0446][47.9771 74.0542 -2.97551][89.0159 -4.94426 92.972][15.9936 -0.0445042 -0.00961874] ] def
CIP3BeginPreviewImage
```

# Screen angles and rulings from native PDF files are now respected

- The value of the *Use From File* option allows screen angles and rulings from the input PDF file to be used
- Before Imaging Engine 22.03, angles and rulings from file could only be used if the PDF file was written by Esko (and had proprietary Esko screening information)
- From version 22.03, these values can be used from any PDF file that contains them



# Digital Film Set XMP Data for PDF(+) input files

- The Digital Film Set XMP data added to the Imaging Engine output files for PDF(+) input files is based on the info present in the PDF(+) data only, XMP data of the input file is NOT used anymore
- Following keys that were missing in previous versions have now been added as well:
  - printingmethod
  - inknroriginal

# Print Control Wizard, Curves & Screening



# Print Control Wizard

## Value for Care Plan features

- Improvements UX
- Filtered plate list for each application
- In the Plate type field it's possible to fill in any plate type
- Select basic dot for Corrugated Standard Post Print
- Corrugated HQPP - Printing Standard default on 'cmyk\_Linear color'
- Plate & Press Calibration Wizard simplified
- Save Report available for unfinished printing condition
- Load and save measurements easier

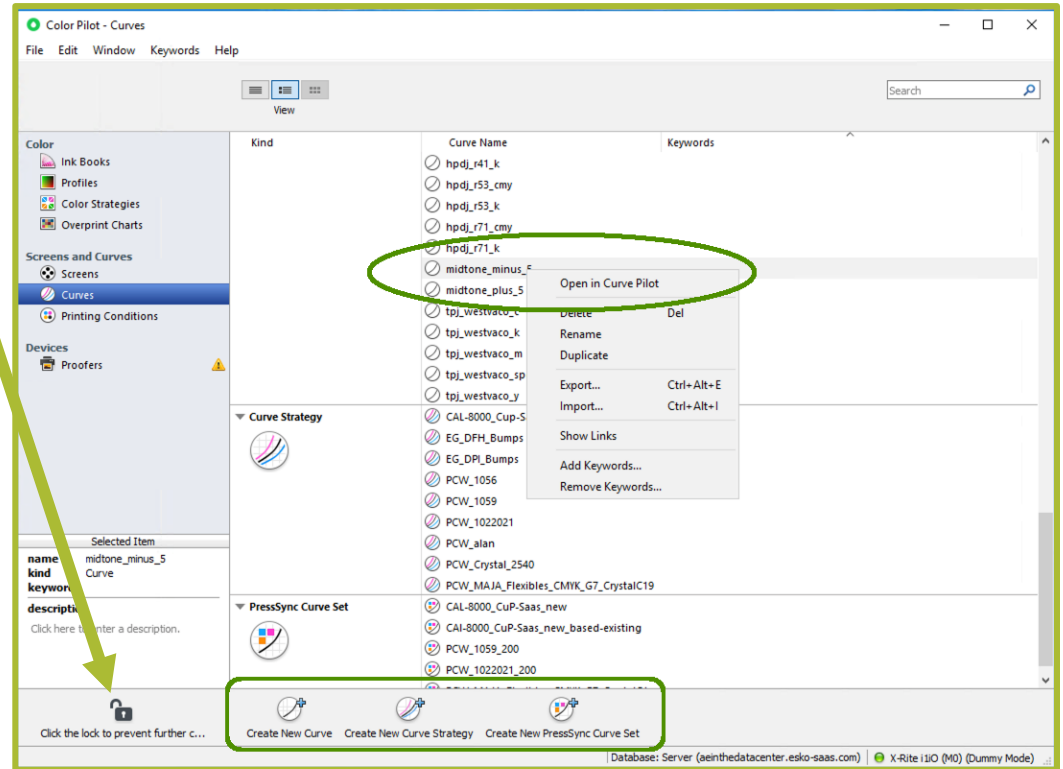


# Tools: improved connection to AE SaaS

- No need for a local Automation Engine and Imaging Engine anymore when using Curve Pilot, HD Flexo Screens or ScreenManager
  - Can now be started from within Color Pilot
- Color Pilot connects to the Datacenter and downloads the resources via the AE Syncer tool just like before
- New licenses available for Curve Pilot replacing the need for a complete IE license

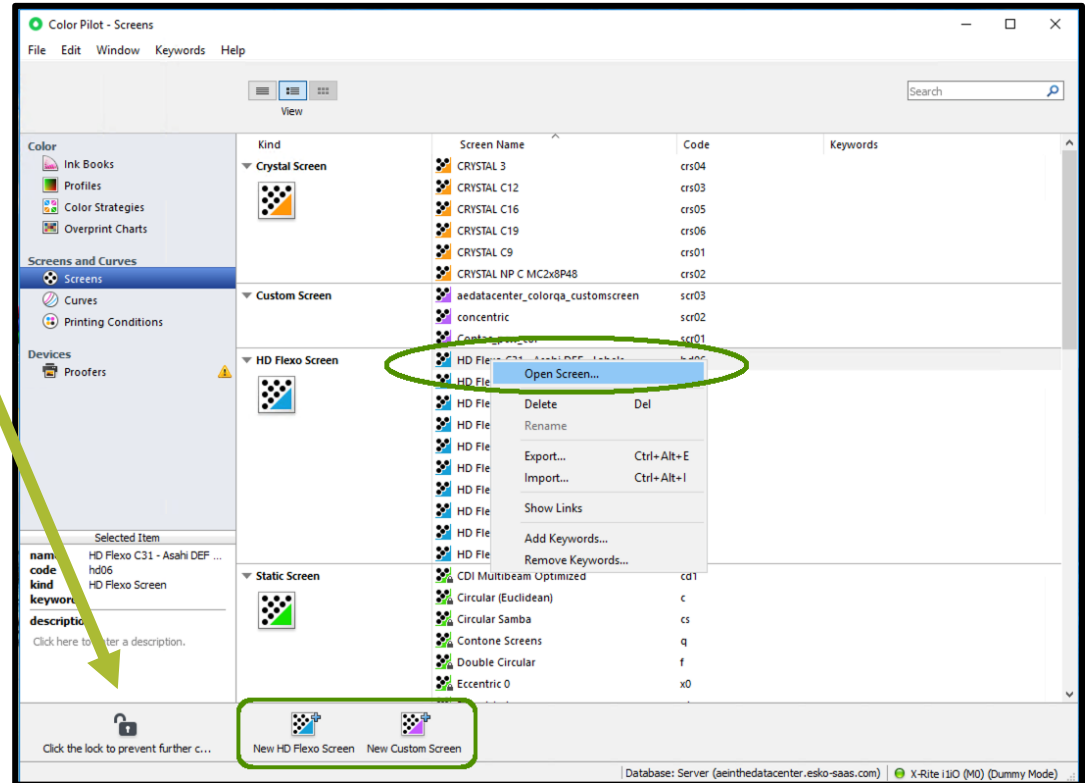
# Tools: improved connection to AE SaaS

- After unlocking you are able to edit or create curves from within Color Pilot
- Curves (dgc), Curve strategy or PressSync curve set
  - You can double click or right click and open a curve
  - or create a new curve with the buttons below



# Tools: improved connection to AE SaaS

- After unlocking you are able to open or create a screen from within Color Pilot
- HD Flexo screen or Custom screen:
  - You can double click or right click and open a curve
  - or create a new curve with the buttons below



# Print Control Wizard – Improved UX

Mandatory fields are now indicated with a yellow star

Color Pilot - CorrugatedHQPP\_PrintingStandard

File Edit Window Keywords Help

Printing Conditions > CorrugatedHQPP\_PrintingStandard

**This printing condition is not set up yet.**  
Add your plate making characteristics below.

**General** ✓  
Board ✓  
Ink Set and Printing Standard ✓  
**Plate Making** \*  
Press -  
Screens and Curves -

**Imager**  
Imager Type: <Please Select> \*  
Optics: <Please Select> \*  
Resolution: 2540 ppi ✓

**Exposure**  
Exposure Type: <Please Select> \*  
Description: Add a description...

**Plate**  
Plate Type: <Please Select> ✓  
Thickness: <Please Enter> mm  
Relief Depth: <Please Enter> mm  
Developer: Solvent

# Print Control Wizard – Plate list

- Filtered plate list according to used Application
  - Depending on which application chosen (Flexibles, Labels, Corrugated) you will get the according plate list with the available plate thicknesses
- Plate Type & thickness has the autocomplete function
  - E.g. if you type 'Dupont' then you'll see all Dupont plate types and you can select the one you required

**Plate**

Plate Type:  \*

Thickness:

Relief Depth:

Developer:

**Plate**

Plate Type:  ✓

Thickness:


Relief Depth:

Developer:

# Print Control Wizard – Plate list

- It's now also possible to fill in any plate name
  - You can type any plate name even if not in the list. If the plate name is not from the list, you can type in any thickness
  - A warning is shown: "When using XPS, we advise to use an XPS certified plate type."

**Plate**

Plate Type:  

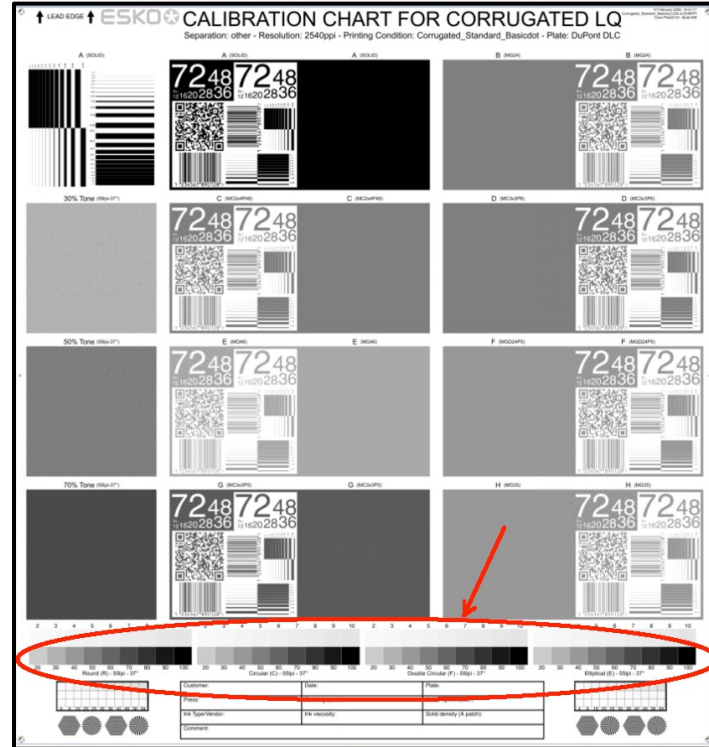
Thickness:  mm

Relief Depth:  mm

Developer:

# PCW – Basic dot for Corrugated Standard PP

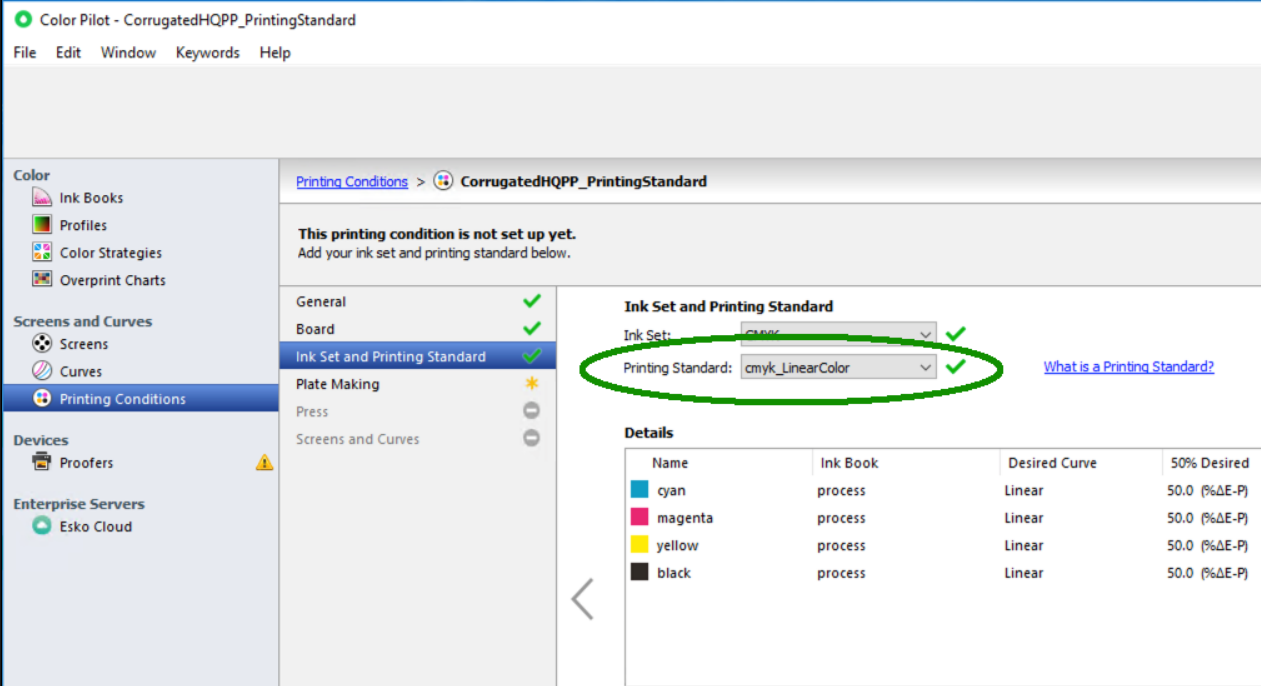
- Corrugated Standard Post Print
  - In previous version it always used the C dot
  - Chart contains now the 4 basic dots (R, C, E, F) so you can select the best dot
  - Or you select manually one of the basic dots



# Print Control Wizard – Corrugated HQPP

Printing Standard default on 'cmyk\_Linear color'

When making a new printing condition for Corrugated High Quality Post Print, we selected already a good printing standard. The 'cmyk\_LinearColor' is a linear curve which is good for corrugated printing.



Color Pilot - CorrugatedHQPP\_PrintingStandard

File Edit Window Keywords Help

Printing Conditions > CorrugatedHQPP\_PrintingStandard

**This printing condition is not set up yet.**  
Add your ink set and printing standard below.

**Ink Set and Printing Standard**

Ink Set:  ✓

Printing Standard:  ✓

[What is a Printing Standard?](#)

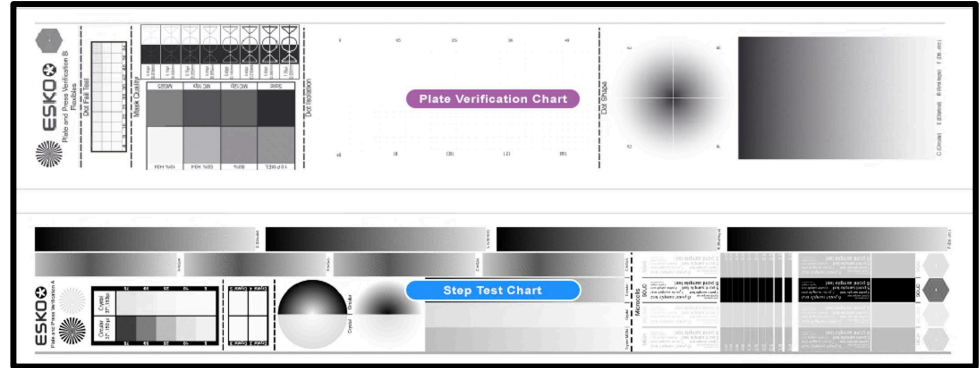
**Details**

Name	Ink Book	Desired Curve	50% Desired
cyan	process	Linear	50.0 (%ΔE-P)
magenta	process	Linear	50.0 (%ΔE-P)
yellow	process	Linear	50.0 (%ΔE-P)
black	process	Linear	50.0 (%ΔE-P)



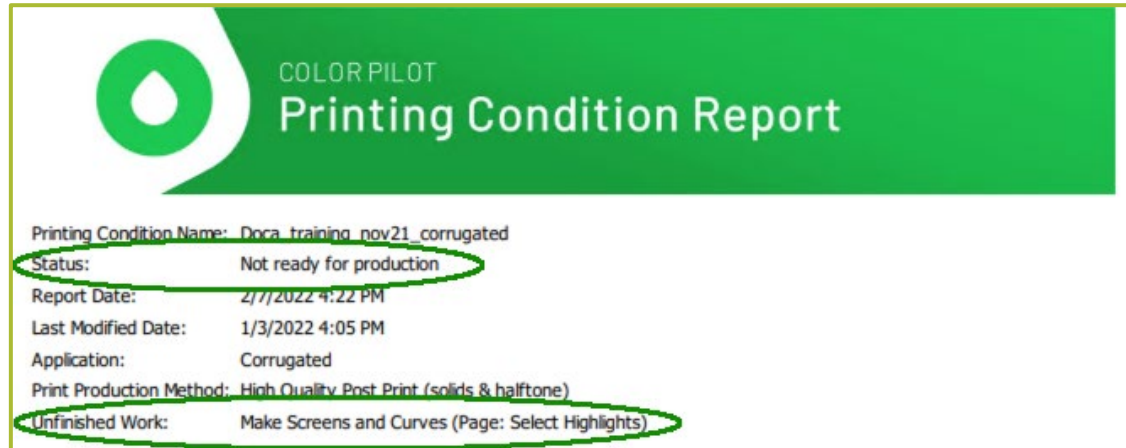
# PCW – Plate & Press Calibration Wizard simplified

- 2 calibration charts for plate and press have been renamed, indicating clearly the purpose:
  - Plate verification chart
    - To check the plate quality
    - No need to print
  - Steptest chart
    - to determine the pixelboost and screening
    - contains now 4 basic dots
    - Only this one to be printed



# PCW – Report available for unfinished pc

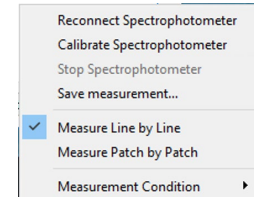
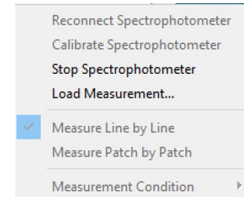
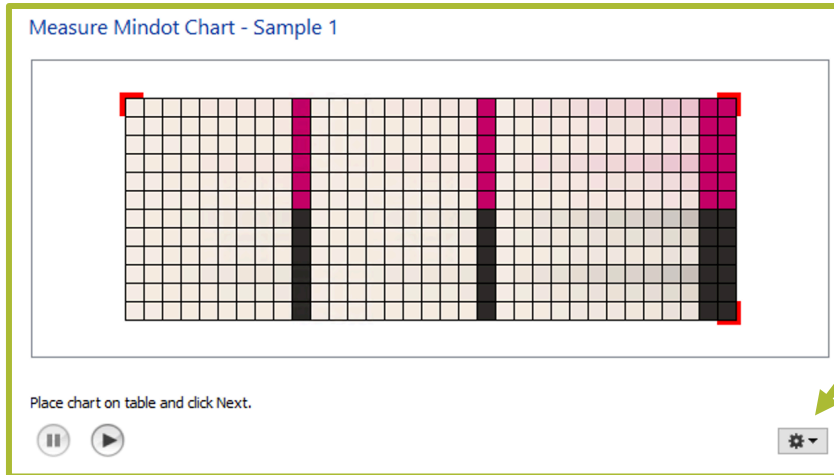
- “Save Report” available even if your printing condition is not finished yet



- Report contains
  - status: 'not ready for production'
  - Unfinished work

# PCW – Load and Save measurements easier

- The 'load measurements' and 'save measurements' is now available in the 'cogwheel' in the mindot and tonescale field window.
- No need to stop the spectro first



# Flexo Engine

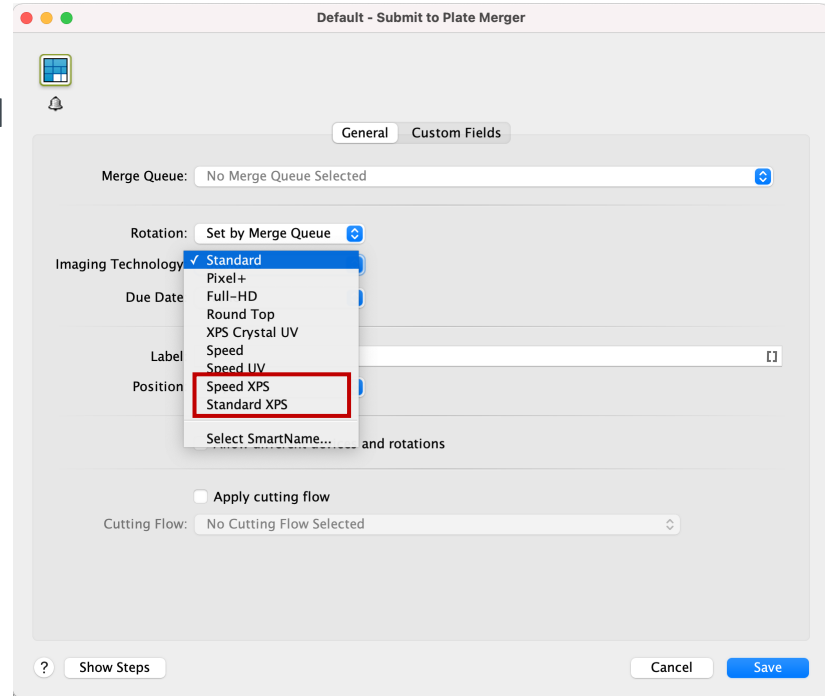


# Support for additional XPS Imaging Technologies

## Plate Merger

Following XPS Imaging Technologies were added in 22.03:

- Speed XPS
- Standard XPS



ESKO\*