

Imaging Engine 21.03 – what's new

March 2021

Dorine Cappoen

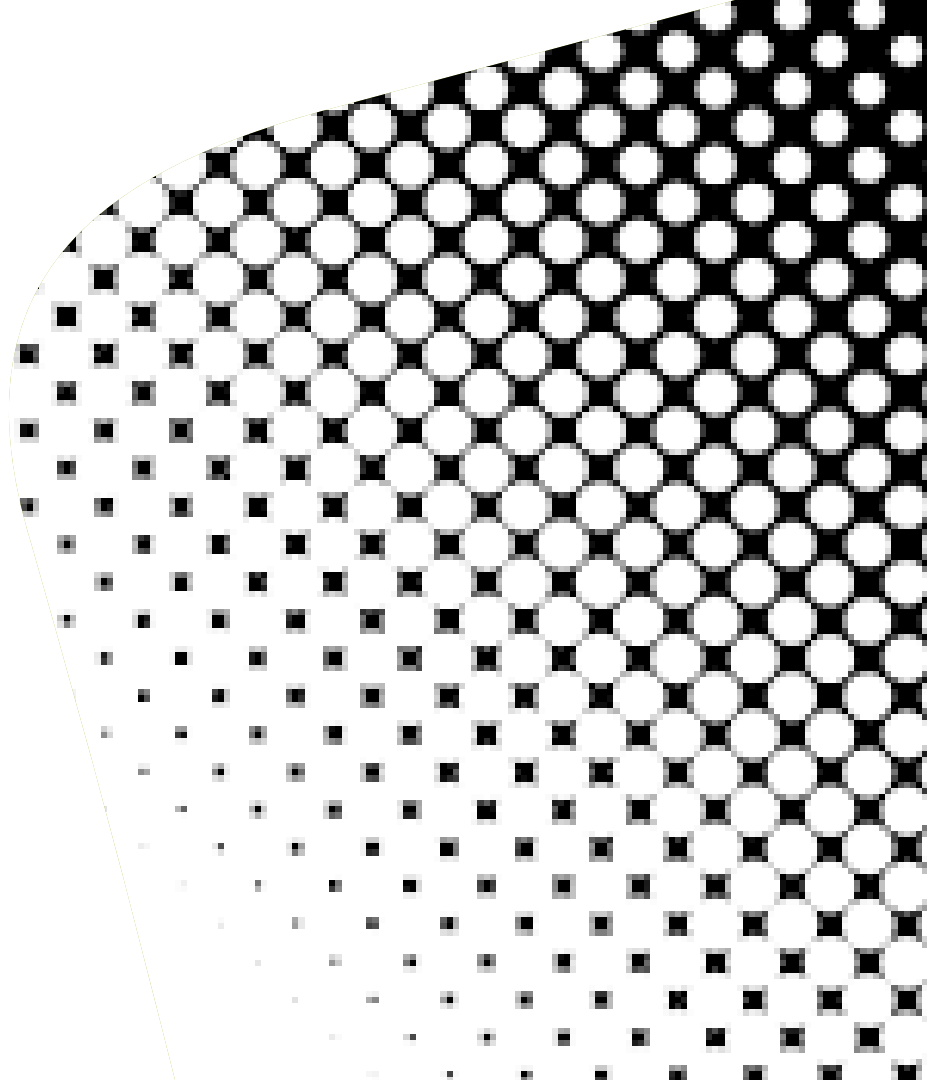
R&D Application Specialist

Imaging Engine – What's new in 21.03

- Support for Processing steps from a native PDF
 - Included in all Imaging Engine Tasks.
 - Extra tab called "Processing Steps" in the ticket.
 - Allows the user to selectively switch off (printable) PDF processing steps
 - Limitation: no support for public parameters
 - The 'Processing Steps' tab comes before the 'Inks' tab.
 - 'Document Inks' has been renamed to 'Inks'
 - Because deselecting processing steps will reduce the list of Inks shown in the 'Inks' tab

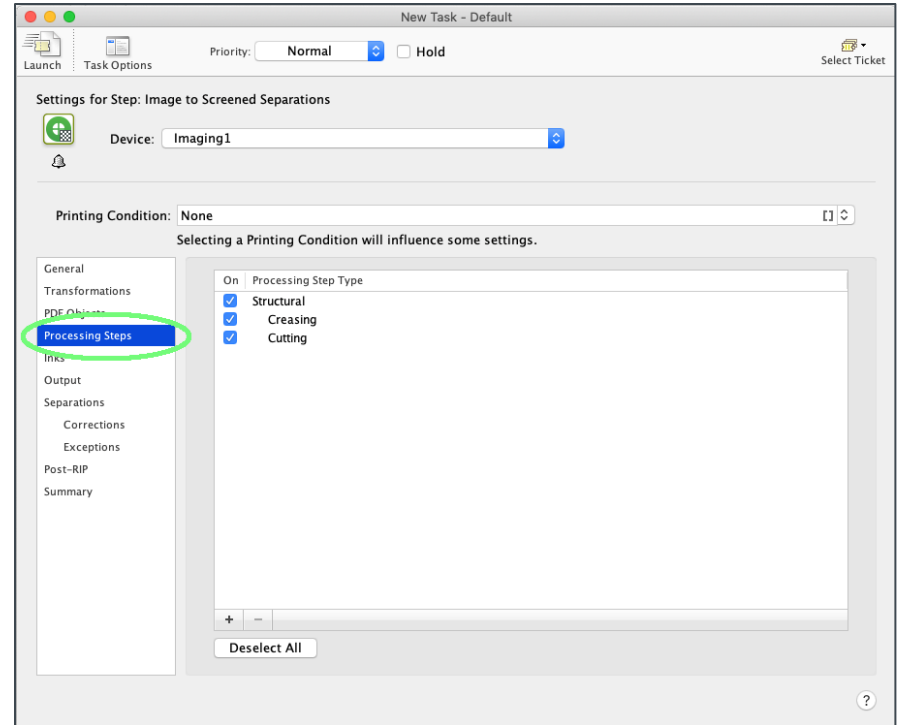
Agenda

- New functionality
 - Processing steps
- New product
 - Imaging Engine SaaS



Imaging Engine 21.03 – Support for Processing steps

- tab is only available in case of native PDF file input or in case the ticket is edited without any input files selected
- In the screenshot, we see 2 'printable' Processing Step layers: 'Creasing' and 'Cutting'



Imaging Engine 21.03 – Support for Processing steps

- You see the inks with a circle as symbol as these inks are used in the processing steps
- You see the same when asking info in the Pilot

The screenshot displays the 'Settings for Step: Image to Screened Separations' window. The 'Inks' tab is selected, showing a list of inks with checkboxes and a 'Deselect All' button. The 'Processing Steps' tab is also visible, showing a list of processing steps with checkboxes and a 'Deselect All' button. A callout box highlights the 'diecut' and 'fold' steps in the Processing Steps list.

Settings for Step: Image to Screened Separations

Device: Imaging1

Printing Condition: None

Select Inks: Manually

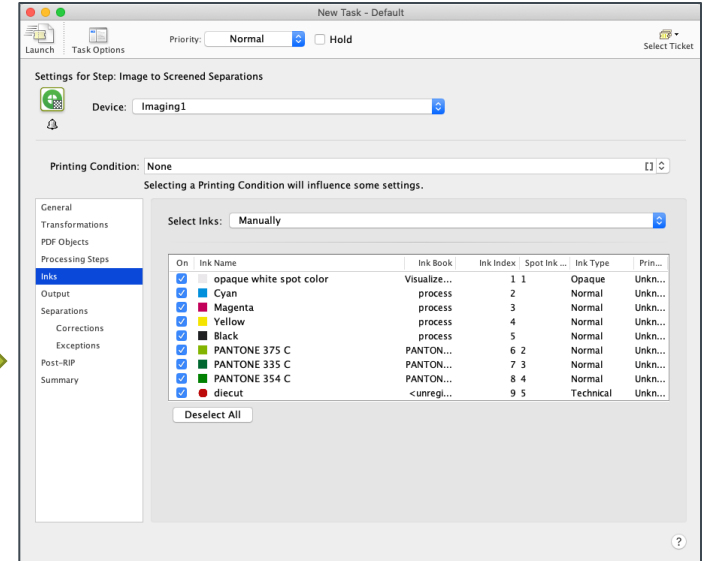
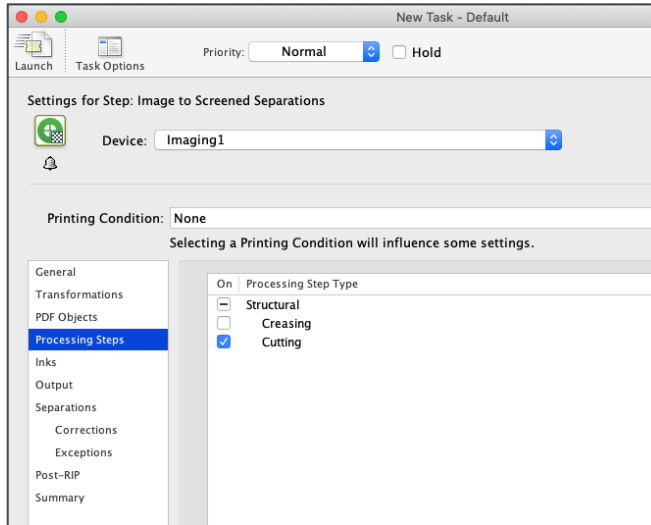
On	Ink Name	Ink Book	Ink Index	Spot Ink ...	Ink Type	Prin...
<input checked="" type="checkbox"/>	opaque white spot color	Visualize...	1	1	Opaque	Unkn...
<input checked="" type="checkbox"/>	Cyan	process	2		Normal	Unkn...
<input checked="" type="checkbox"/>	Magenta	process	3		Normal	Unkn...
<input checked="" type="checkbox"/>	Yellow	process	4		Normal	Unkn...
<input checked="" type="checkbox"/>	Black	process	5		Normal	Unkn...
<input checked="" type="checkbox"/>	PANTONE 375 C	PANTON...	6	2	Normal	Unkn...
<input checked="" type="checkbox"/>	PANTONE 335 C	PANTON...	7	3	Normal	Unkn...
<input checked="" type="checkbox"/>	PANTONE 354 C	PANTON...	8	4	Normal	Unkn...
<input checked="" type="checkbox"/>	diecut	<unregi...	9	5	Technical	Unkn...
<input checked="" type="checkbox"/>	fold	<unregi...	10	6	Technical	Unkn...

Deselect All

If you wonder why you don't see 'vernish', see slide 6

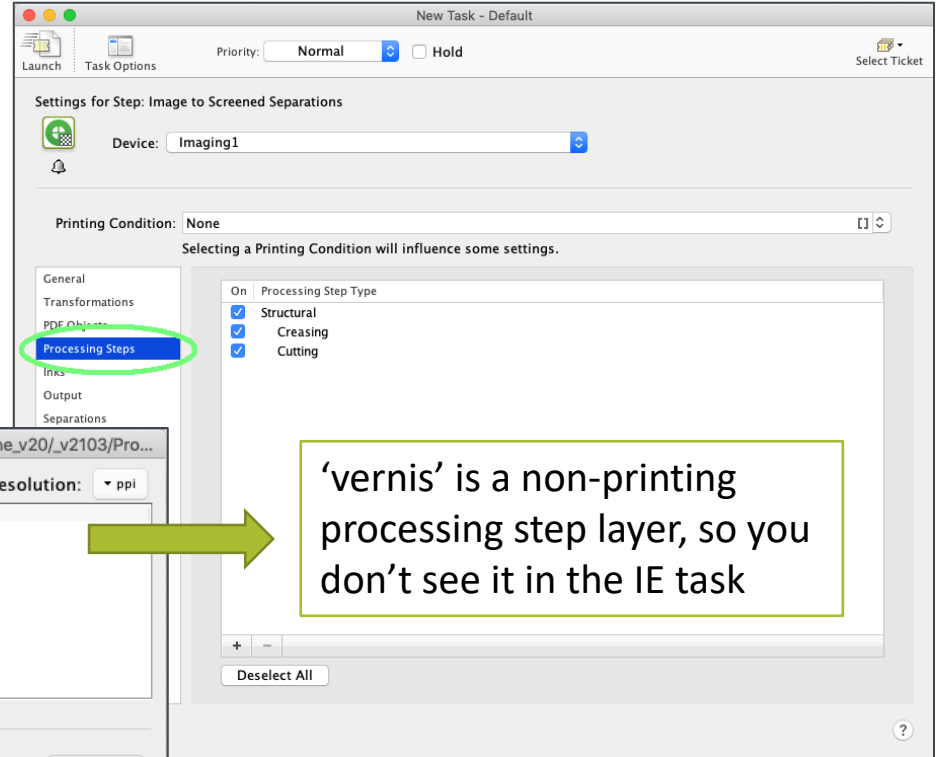
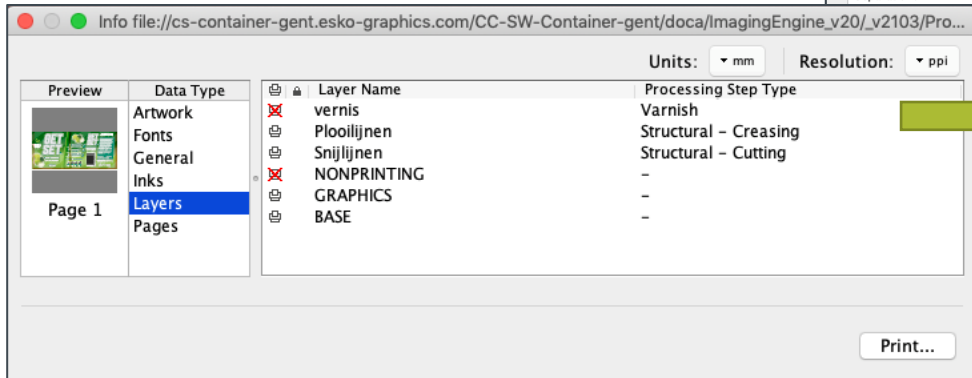
Imaging Engine 21.03 – Support for Processing steps

- You can deselect any processing step -> as result they will no longer be in the inks (in this case 'fold')



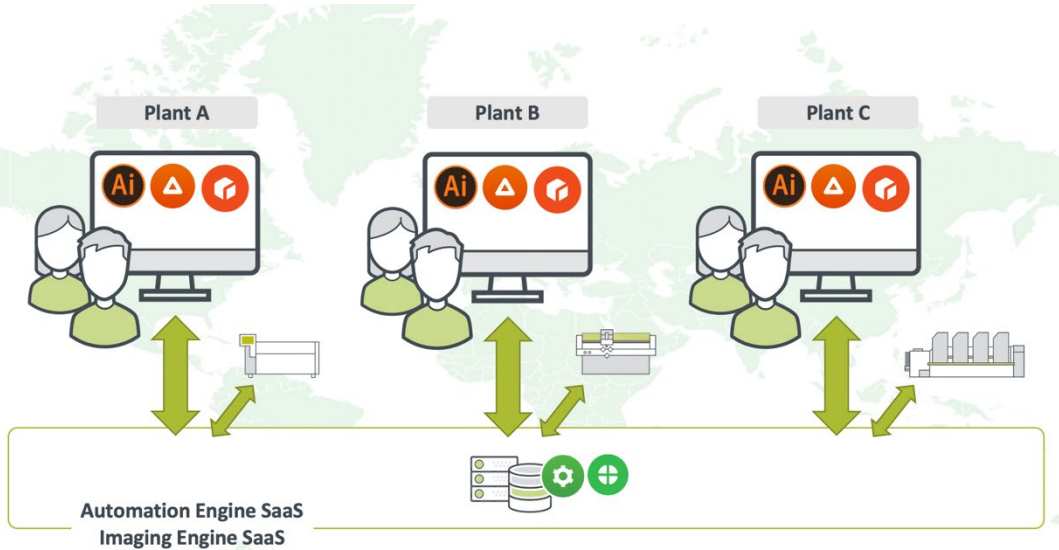
Imaging Engine 21.03 – Support for Processing steps

- Non-printable processing steps are not shown in the tab
 - In example below: 2 layers where 'verniss' is a processing step layer



'verniss' is a non-printing processing step layer, so you don't see it in the IE task

Imaging Engine SaaS



- New product introduction
- No internal server hardware
- Managed service
- Available 24/7
- Centralizing assists
- Existing Imaging Engine Server customers can migrate to the SaaS environment
- Automation Engine is a pre-requisite

ESKO*