

Imaging Engine 18.1.1

What's New

Imaging Engine 18.1.1 What's New - Overview

- Updated System Requirements
- New APPE 5.3
- Improved Image Resampling
- Improved ink selection over public parameters
- Correction Curves in task: support for curve strategies (icpro)
- Updated info in XMP
- Improved use of Print Control Wizard 'Crystal Screens'
- DotSpy is End-Of-Life

Imaging Engine 18.1.1 – updated system requirements

- Cores per worker
 - minimal 4 logical cores per worker + 4 logical cores for the OS
- RAM per worker
 - minimum 8 GB for the OS + 8 GB RAM per worker
- Minimum recommended clock speed
 - Minimum 2GHz
 - Recommended 3 GHz
- Hard disk
 - 100gb per worker for storage of temporary data is advised
 - SSD hard disk

Imaging Engine 18.1.1 – new APPE version 5.3

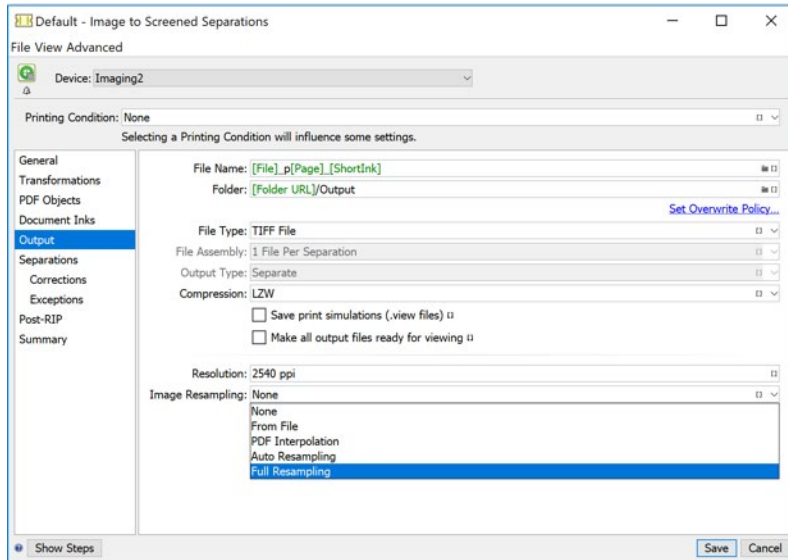
- Imaging Engine comes with a new version of the Adobe kernel, APPE 5.3
 - Which includes various features and fixes

Improved Image Resampling

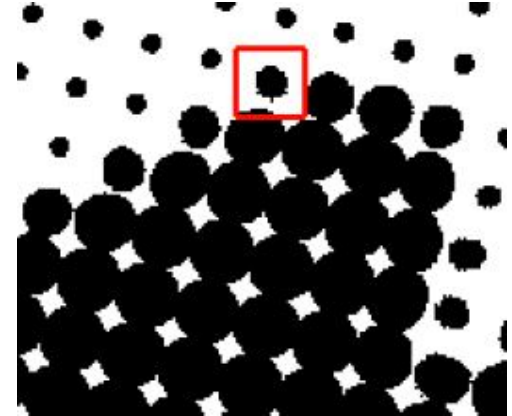
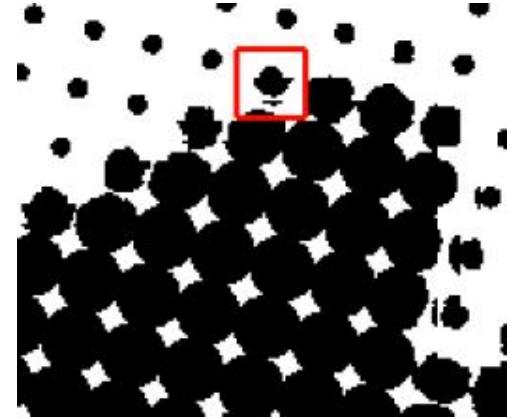
What is Image Resampling?

Image resampling is the highest quality output from Imaging Engine

Learn more in this [Knowledge Base](#) article



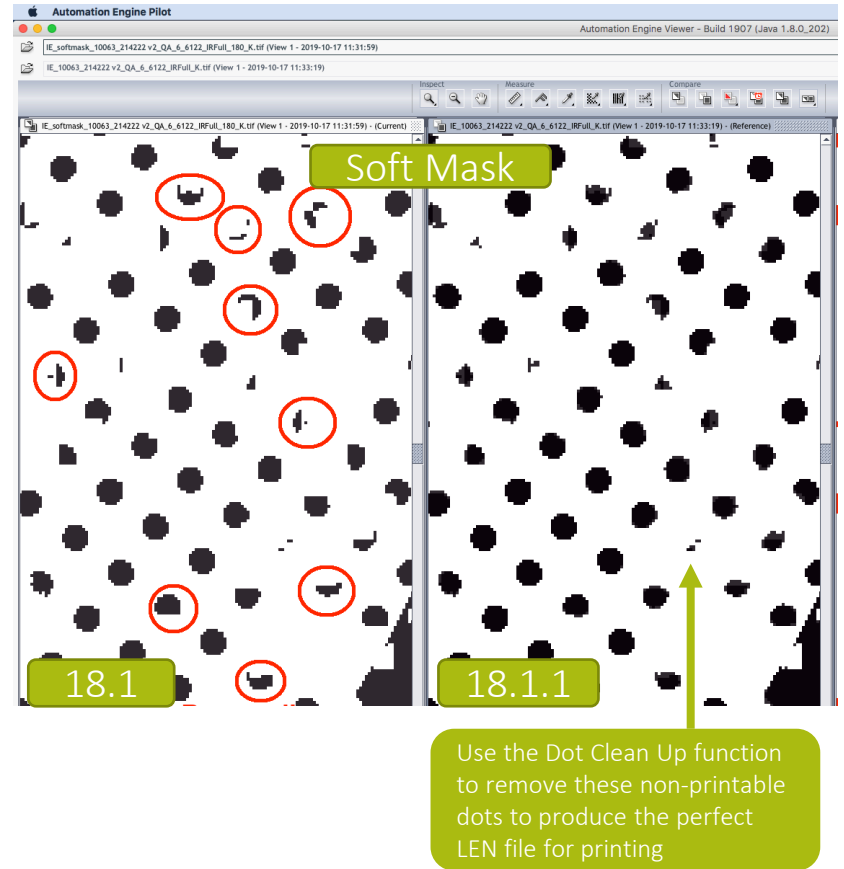
No Resampling



Full Resampling

Image Resampling Improvements

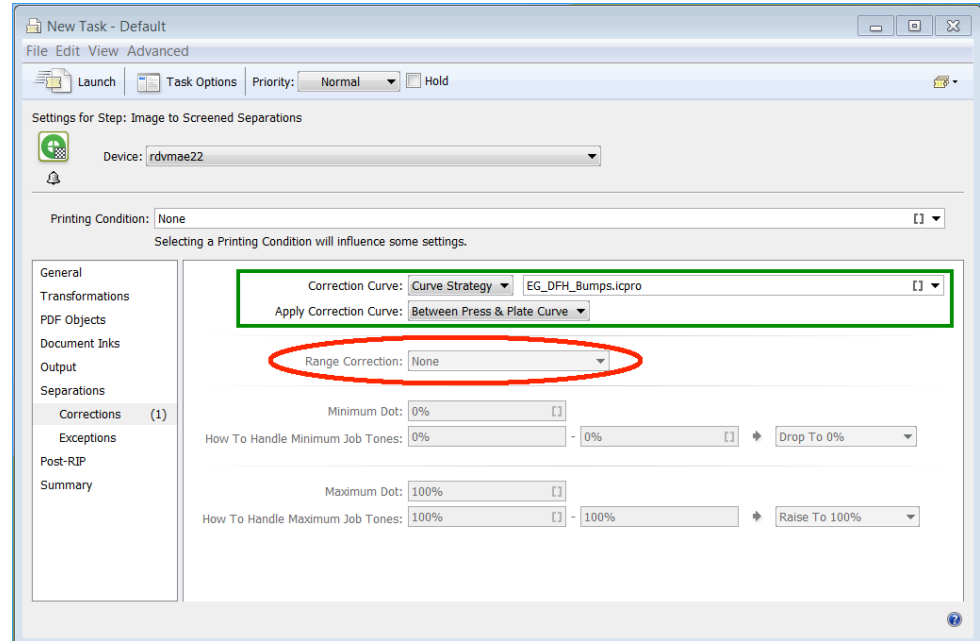
- Better quality
 - Soft masks are now being resampled
- Diskspace
 - No 'out of memory' issues
 - Use the latest system requirements
- In general processing times are faster
 - This is job dependent
 - Previous Imaging Engine versions would increase processing times if Full Resampling was selected



Correction Curves

Correction Curves

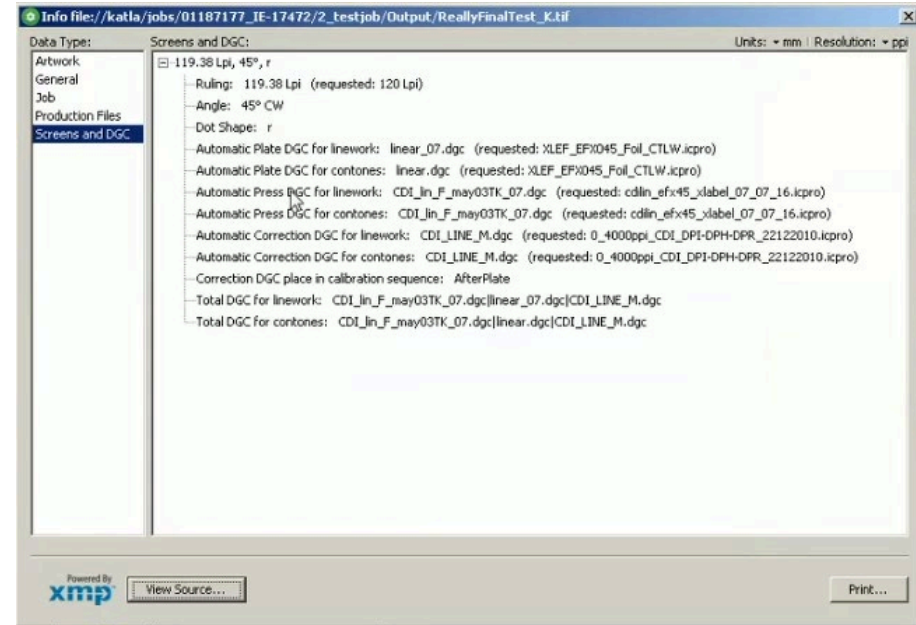
- It is now possible to select a strategy (an icpro curve)
- When using a Curve Strategy as Correction Curves, 'Range Correction' is disabled
 - This avoids a conflict between information from Curve Pilot and from the IE ticket



XMP Improvements

XMP Improvements

- Correction curves are added in XMP
 - 'Combined DGC' is now calculated: shows all curves that are applied in the correct order (according to the settings)
- No difference between FlexRip XMP and IE XMP behaviour



Ink Selection: Public Parameters

Improved ink selection over public parameters

- Previous versions had conflicts between public parameters and the Imaging Engine ticket
- Now, with 18.1.1,
 - By default every unique job ink is listed and selected
 - All screening parameters will be taken from the ticket
 - Shuttle, screening parameters display a ticket icon
 - Click the icon to overrule a screening parameter

Inks:

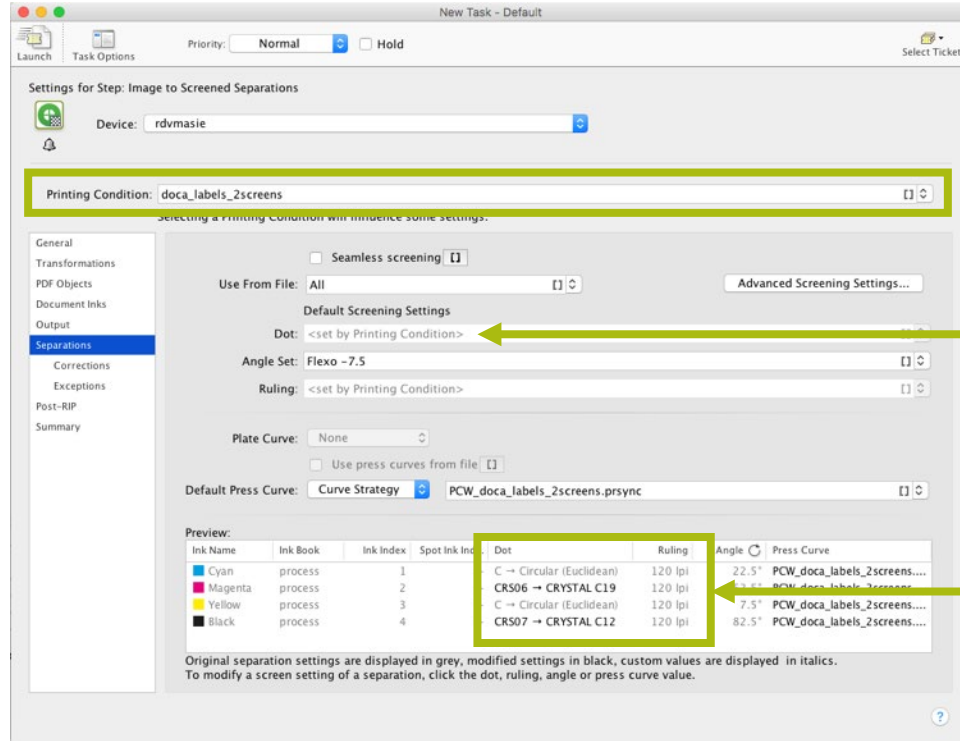
<input checked="" type="checkbox"/>	Ink Name	Ink Book	Ruling	Angle	Dot Shape	Ink Type	Printing ...
<input checked="" type="checkbox"/>	C	process				Normal	Unknown
<input checked="" type="checkbox"/>	M	process				Normal	Unknown
<input checked="" type="checkbox"/>	Y	process				Normal	Unknown
<input checked="" type="checkbox"/>	K	process				Normal	Unknown
<input checked="" type="checkbox"/>	PANTONE Blue 072 C	PANTONE+ Solid C...	150 lpi		M (Mo...	Normal	NON STAM...

Value set in the ticket

- C (Circular (Euclidean))
- CD0 (TwinBeam)
- CD1 (CDI Multibeam Optimized)
- CO (Endless)
- CRS01 (CRYSTAL 4)
- CRS02 (CRYSTAL 3)
- CRS03 (CRYSTAL C5)
- CRS04 (CRYSTAL 4 S3R,1)

**Improved Flexibility using
Print Control Wizard
Crystal Screens**

Imaging Engine 18.1.1 – change when using Printing Conditions



Learn more in [this KB article](#).

Dot and Ruling are defined by the Printing Condition

Screening from file is respected

DotSpy

DotSpy: End Of Life announcement

- DotSpy is a 32bit application, the new iOS Catalina will only support 64-bit applications
- Advanced communication has been provided to every DotSpy customer, in various formats
- Find all relevant information in [this Knowledge Base article](#)

ESKOFLASH / NUMBER 03, 2019

Esiko Print Control Wizard wins Global Label Industry Award

The state-of-the-art Print Control Wizard from Esko continues to earn praise and recognition from across the industry, as the software scooped the coveted 'Award for Innovation' at the Label Industry Global Awards, presented at Labelexpo Europe in Brussels, Belgium.

[Keep on reading...](#)

DotSpy End-Of-Life

The next version of Apple OS, to be launched autumn 2019 is [Catalina](#). Amongst the new features, Catalina will only support 64bit applications. As DotSpy is a 32bit application, DotSpy will not be compatible with OS Catalina.

Esiko sends 2 emails to customers:

[mail 1](#)

To all customers, sent Oct 11th in English, French, Spanish, German, Italian and Portuguese

[mail 2](#): To customers with a Maintenance contract

[mail 3](#): To customers without a Maintenance contract

The mailbox dotspy@esko.com is available for all Esko Inside Sales Representatives.

Contact person: Robert Bruce

[To the KB Article](#)

ESKO

Knowledge Base

[Back to Esko Support](#)

KB259425776: DotSpy End Of Life: Frequently Asked Questions

Choose your language for a machine translation: [Select Language](#)

Esiko DotSpy will not be compatible with Apple OS Catalina

The next version of Apple OS, to be launched autumn 2019, is [Catalina](#). Amongst the new features, Catalina will only support 64bit applications. As DotSpy is a 32bit application DotSpy will not be compatible with OS Catalina.

Here are the most Frequently Asked Questions!

Q: I have a maintenance contract for DotSpy. What is my option moving forward when I migrate to Catalina?

Answer

As a maintenance contract customer, you will be able to update your Esko configuration with a Bitmap Viewer license at no cost. Please contact us via dotspy@esko.com to facilitate the migration.

The Bitmap Viewer software is part of the Imaging Engine installer. Bitmap Viewer runs on Windows only.

Q: What is Bitmap Viewer?

Answer

Bitmap Viewer is a powerful quality control tool that digitally verifies RIPped data for content and printability before output.

Find here the [Product documentation](#)

Article information	
Applies to	DotSpy
Created	17 September 2019
Last revised	11 October 2019
Author	MME/DOCA
Case Number	

Contents

- [Esiko DotSpy will not be compatible with Apple OS Catalina.](#)

Dear Mr. Brown

In an earlier mail, we informed you that Esko DotSpy will not be compatible with Apple OS Catalina.

As a maintenance contract customer, you will be able to update your Esko configuration with a Bitmap Viewer license at no cost. Please contact us via dotspy@esko.com to facilitate the migration.

Note that Bitmap Viewer runs on Windows only.

If you have any questions or queries then feel free to contact dotspy@esko.com! Find here a list of [Frequently Asked Questions](#).

Kind regards,

ESKO

dotspy@esko.com - www.esko.com - All Esko Offices

EMEA:
Kortrijksesteenweg 1095
9051 Gent, Belgium
info.eur@esko.com - Tel.: +32 (0)9 216 92 11

USA:
8535 Gander Creek Drive
Miamisburg, Ohio 45342, USA
info.usa@esko.com - Tel.: +1 937-454-1721

[Facebook](#) - [Blog](#) - [YouTube](#) - [Twitter](#) - [LinkedIn](#)

Manage your [mail preferences](#). [View online](#).

Asia:
8 Changi Business Park Ave 1, UE BizHub East #07-51,
South Tower, Singapore 486018
info.ssa@esko.com - Tel.: +65 6420 0399

Latin America:
Rua Professor Aprígio Gonzaga, 78, 10º andar
São Paulo, SP, 04303-000 (Brasil)
info.la@esko.com - Tel.: +55 11 3550-1311

ESKO 