

Esko Proof

Reference Guide

Copyright

© Copyright 2016 Esko Software BVBA, Gent, Belgium

All rights reserved. This material, information and instructions for use contained herein are the property of Esko Software BVBA. The material, information and instructions are provided on an AS IS basis without warranty of any kind. There are no warranties granted or extended by this document. Furthermore Esko Software BVBA does not warrant, guarantee or make any representations regarding the use, or the results of the use of the software or the information contained herein. Esko Software BVBA shall not be liable for any direct, indirect, consequential or incidental damages arising out of the use or inability to use the software or the information contained herein.

The information contained herein is subject to change without notice. Revisions may be issued from time to time to advise of such changes and/or additions.

No part of this document may be reproduced, stored in a data base or retrieval system, or published, in any form or in any way, electronically, mechanically, by print, photoprint, microfilm or any other means without prior written permission from Esko Software BVBA.

This document supersedes all previous dated versions.

PANTONE®, PantoneLIVE and other Pantone trademarks are the property of Pantone LLC. All other trademarks or registered trademarks are the property of their respective owners. Pantone is a wholly owned subsidiary of X-Rite, Incorporated. © Pantone LLC, 2015. All rights reserved.

This software is based in part on the work of the Independent JPEG Group.

Portions of this software are copyright © 1996-2002 The Free-Type Project (www.freetype.org). All rights reserved.

Portions of this software are copyright 2006 Feeling Software, copyright 2005-2006 Autodesk Media Entertainment.

Portions of this software are copyright ©1998-2003 Daniel Veillard. All rights reserved.

Portions of this software are copyright ©1999-2006 The Botan Project. All rights reserved.

Part of the software embedded in this product is gSOAP software. Portions created by gSOAP are Copyright ©2001-2004 Robert A. van Engelen, Genivia inc. All rights reserved.

Portions of this software are copyright ©1998-2008 The OpenSSL Project and ©1995-1998 Eric Young (eay@cryptsoft.com). All rights reserved.

This product includes software developed by the Apache Software Foundation (<http://www.apache.org/>).

Adobe, the Adobe logo, Acrobat, the Acrobat logo, Adobe Creative Suite, Illustrator, InDesign, PDF, Photoshop, PostScript, XMP and the Powered by XMP logo are either registered trademarks or trademarks of Adobe Systems Incorporated in the United States and/or other countries.

Microsoft and the Microsoft logo are registered trademarks of Microsoft Corporation in the United States and other countries.

SolidWorks is a registered trademark of SolidWorks Corporation.

Portions of this software are owned by Spatial Corp. 1986 2003. All Rights Reserved.

JDF and the JDF logo are trademarks of the CIP4 Organisation. Copyright 2001 The International Cooperation for the Integration of Processes in Prepress, Press and Postpress (CIP4). All rights reserved.

The Esko software contains the RSA Data Security, Inc. MD5 Message-Digest Algorithm.

Java and all Java-based trademarks and logos are trademarks or registered trademarks of Sun Microsystems in the U.S. and other countries.

Part of this software uses technology by Best Color Technology (EFI). EFI and Bestcolor are registered trademarks of Electronics For Imaging GmbH in the U.S. Patent and Trademark Office.

Contains PowerNest library Copyrighted and Licensed by Alma, 2005 – 2007.

Part of this software uses technology by Global Vision. ArtProof and ScanProof are registered trademarks of Global Vision Inc.

All other product names are trademarks or registered trademarks of their respective owners.

Correspondence regarding this publication should be forwarded to:

Esko Software BVBA
Kortrijksesteenweg 1095
B – 9051 Gent
info.eur@esko.com

Table of Contents

Chapter 1. Copyright	2	8.3.1. First toolbar	86
Chapter 2. Table of Contents	4	8.3.2. Second toolbar	87
Chapter 3. Introduction	6	8.4. Property Inspector	89
3.1. What is Esko Proof?	6	8.4.1. File tab > Source File Information pane	89
3.2. Program architecture	6	8.4.2. File tab > Warning and Error pane	89
3.3. System requirements	7	8.4.3. File tab > Subfiles pane	90
3.4. Program folders	7	8.4.4. File tab > Job Merge pane	90
3.5. About this manual	9	8.4.5. File tab > PS/EPS/PDF pane	90
3.6. Conventions	9	8.4.6. Layout tab > Virtual Sheet Size pane	90
Chapter 4. Setting up	10	8.4.7. Layout tab > Layout Options pane	90
4.1. Starting the Esko Proof Client	10	8.4.8. Layout tab > Nesting pane	90
4.2. Logging on to an Esko Proof Server	10	8.4.9. Layout tab > Step & Repeat pane	90
4.3. System workflows	12	8.4.10. Layout tab > Job Ticket pane	91
4.3.1. Default system workflows	12	8.4.11. Finishing tab > Crop Marks pane	91
4.3.2. Setting up system workflows	13	8.4.12. Output tab > Print Settings pane	91
Chapter 5. Getting to know your software	24	8.4.13. Output tab > Media Settings pane	91
5.1. Job Explorer	24	8.4.14. Output tab > Media Configuration pane	91
5.2. System Manager	25	8.4.15. Output tab > Advanced Print Options pane	91
Chapter 6. Settings in System Manager	28	8.4.16. Output tab > Special Printer Settings pane	92
6.1. Menus	28	8.4.17. System tab > Device pane	92
6.1.1. File menu	28	8.5. Keyboard shortcuts	92
6.1.2. Edit menu	29	8.5.1. Activating options	92
6.1.3. System menu	32	8.5.2. Activating toolbars	92
6.1.4. Tools menu	32	8.5.3. General	93
6.1.5. Workspace menu	32	8.5.4. Page position	94
6.1.6. Help menu	32	8.5.5. Nesting jobs	94
6.2. Toolbar	33	8.5.6. Zoom	95
6.3. Property Inspector	33	8.5.7. Rulers, guides and grid	95
6.3.1. User settings	34	Chapter 9. Printing and monitoring print jobs	98
6.3.2. Workflow settings	34	9.1. Printing directly from Esko Proof	98
6.3.3. Output device settings	59	9.2. Printing via a hotfolder	100
Chapter 7. Managing system workflows ..	64	Chapter 10. Nestings	104
7.1. Making changes to system workflows	64	10.1. What are nestings?	104
7.1.1. Available menu commands	64	10.2. User interface	105
7.2. Saving and restoring settings	67	10.3. Creating nestings	106
Chapter 8. Settings in Job Explorer	74	10.3.1. Automatic nestings	106
8.1. Menus	74	10.3.2. Manual nestings	106
8.1.1. File Menu	74	10.4. Editing nestings	107
8.1.2. Edit menu	75	10.4.1. Adding jobs to a nesting	107
8.1.3. Nesting menu	81	10.4.2. Adding/deleting sheets	108
8.1.4. Tools menu	81	10.4.3. Removing jobs from nestings	108
8.1.5. View menu	82	Chapter 11. Esko Proof Control	110
8.1.6. Workspace menu	85	11.1. What is Esko Proof Control?	110
8.1.7. Help menu	85	11.2. Available features	110
8.2. Context menus	85	11.2.1. Esko Proof Server Stop/Esko Proof Server Start/	
8.3. Toolbars	86	Esko Proof Server Restart	110
		11.2.2. Esko Proof Client Start	111
		11.2.3. Esko Proof Server Configuration (Windows only)	
		111	

11.2.4. Autostart Esko Proof Control (Windows)/Open at Login (Macintosh)	111
11.2.5. Server File Maintenance	111
11.2.6. Exit (Windows)/Quit (Macintosh)	111
Chapter 12. Troubleshooting	112
12.1. Server/Logging on	112
12.2. Printing	114
12.3. Media profiles	117
12.4. USB devices	118
12.5. Support	119
Chapter 13. Uninstalling	120
Chapter 14. Glossary	122
Chapter 15. Index	128

Chapter 1: Introduction

This is a brief introduction to Esko Proof. It describes the purpose for which the software was designed, provides details of the hardware and software requirements necessary to set up and run your software and gives an overview of the folder structure.

1.1 What is Esko Proof?

Esko Proof is the perfect tool for anyone wanting to achieve high-quality color reproduction. The software is easy to use and produces color-accurate output, while avoiding the need for complicated color management settings.

The standard media and simulation profiles provided with the software enable your printer to simulate the colors achieved on a professional printing press, thereby making it possible to reproduce genuine proofs on a conventional printer.

In addition, the software includes many settings that are essential in the production industry for modifying photographic images.

Esko Proof is, therefore, ideal for printing houses, designers, photographers, agencies and service providers in the print media industry, for whom predicting color-accurate print results constitutes an important part of their daily work.

1.2 Program architecture

Esko Proof is based on a Server/Client architecture of modular design. A Server version installed on one computer can be accessed from an unlimited number of Client versions installed on the same or on any other computer. This allows users maximum flexibility in customizing the software to suit their own particular workflow requirements.

The Server runs on Windows and the Client runs on both Windows and Macintosh.

The minimum version of the software comprises:

- Esko Proof (includes one Server version and an unlimited number of Client and Job Monitor versions)
 - The Server is the “brain” behind the software. It runs as a service and is responsible for job processing. When you restart your computer after installing the software, the Server software starts automatically.
 - The Client software simply provides an intuitive user interface. All settings and actions initiated on the Client computer are sent to the Server for processing.
- A license to connect to one standard output device

However, a Verification add-on module is available to supplement the standard version.

1.3 System requirements

You can find the system requirements necessary to install and run Esko Proof successfully on the Esko website: see System Requirements for Esko Proof Server.

1.4 Program folders

This section gives an overview of the file structure of Esko Proof to enable you to locate program files, custom files and other important files quickly and easily.

- Installation folder

When installing Esko Proof at the default location, its fixed program components are installed in the \Program Files (x86)\Esko\Esko Proof folder.

If you chose not to install Esko Proof at the default location, all the program folders are installed in your chosen folder.

The Esko Proof folder contains the following subfolders:

Folder name	Subfolder name	Contains
Client		Program files for Esko Proof, including additionally licensed options
	IT8_CharacterizationData	IT8.7/4 profiling charts for Fogra Proof Certification
	MonitorProfile	Default and custom monitor profiles
	Samples	<ul style="list-style-type: none"> • Lineal_01.ps for calculating media length correction • Print & Cut test files • Test files for white ink printing

- Work folder

You will find all work files directly associated with job processing located in the \ProgramData\Esko\Esko Proof folder.



If you cannot see the ProgramData folder, it may be because it is set up as a hidden folder on your computer. Open Control Panel, and search for "Show hidden files and folders". On the View tab, make sure that the advanced setting "Show hidden files, folders, and drives" is selected.

- Media profiles

Media profiles are installed in the following folders:

Windows	\ProgramData\Esko\Esko Profiles
Macintosh	/Library/Application Support/Esko/Esko Profiles

1.5 About this manual

Users of this manual should already be familiar with:

- The operating system on which their software is installed
- The subject of color management

1.6 Conventions



Cautions must be read carefully. They indicate permanent actions which, once executed, cannot be undone.



Tips and information which you may find useful.

The screen captures illustrated in this manual have been created from a mixture of both the Windows and Macintosh versions of the software. Depending on which version you are using, the image on your screen may look slightly different. However, unless otherwise stated, the functionality is the same for both operating systems.

Chapter 2: Setting up

2.1 Starting the Esko Proof Client

To start the Esko Proof Client:

- Double-click the program icon on the computer desktop (Windows)
- Click the program icon in the Dock (Macintosh)

Program icon

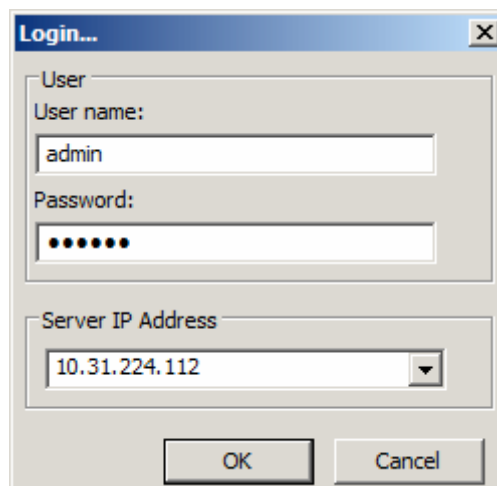


The software cannot be started before it is licensed.

2.2 Logging on to an Esko Proof Server

If an Esko Proof Server and Client are installed on the same computer, the Esko Proof Client automatically logs on to that Server as the default administrator the first time you start the software. If no Esko Proof Server is installed on the same computer, the following window opens when you try to start the software. You must log on to an Esko Proof Server before you can proceed.

Login window



The screenshot shows a 'Login...' dialog box with the following fields and values:

- User** section:
 - User name:
 - Password:
- Server IP Address** section:
 -
- Buttons: and



If a firewall is in use in your network, make sure that it is configured to enable communication between Server and Client. The following ports must be available on the Server and Client computers:

Port	Used for
50005 to 50026	General communication between the Esko Proof Server and the Esko Proof Client
4108	Epson Spectroproofer
8051, 8052, 8053, 8054, 8061, 8062, 8063, 8064	Internal communication of the Esko Proof Server

Furthermore, make sure that the following applications can communicate with the network:

Server	Esko_Proof_Server.exe Esko_Proof_Control.exe
Client	Esko_Proof_Client.exe Esko_LinTool.exe Esko_Verification.exe

For the Windows firewall, the port and application settings are created automatically by the installer.

TO LOG ON TO AN ESKO PROOF SERVER

1 Type the default login information, as follows:

User name: admin

Password: admin

This is the default administrator login information. You can log in as a different user if Esko Proof has already been set up and additional users have been created.

2 Select the IP address of the Server computer.

A list of all available Esko Proof Servers in your sub-network is displayed with IP address in the drop-down list. If Server and Client are installed on the same computer, the IP address of the local Server is placed first in the list. However, you can also type in manually the IP address of an Esko Proof Server. Ask your system administrator if you are not sure which TCP/IP address to use.



If you are currently logged on to a Server on a different computer and want to log on to a local Server installed on the same computer as the Esko Proof Client, you can type "localhost" instead of an IP address. This means that the default IP address 127.0.0.1 is used by the software.

3 Click OK.

The connected Server is displayed at the bottom of the program window.

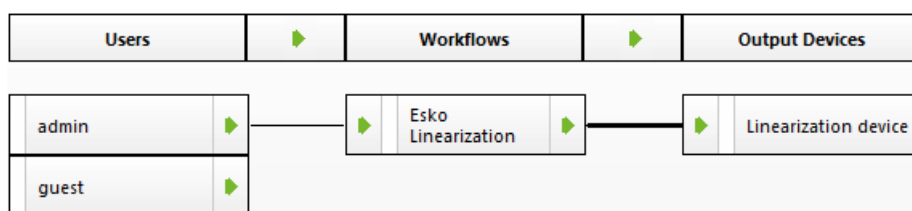
2.3 System workflows

This documentation makes a distinction between the terms "system workflow" and "workflow". The term "system workflow" consists of a user, workflow and output device. It refers to all work processes from file input by a certain user to file output on a specified printer. The term "workflow" is concerned only with file processing and the way files are handled in Esko Proof.

2.3.1 Default system workflows

Esko Proof is installed with one default system workflow, consisting of two users, one workflow and one output device.

Default system workflow configuration



The user "admin" (default password "admin") is permitted to create, set up and manage system workflows in System Manager.

The user “guest” (default password “guest”) is permitted to print and manage his or her own print jobs in Job Explorer but does not have access to System Manager and cannot create or modify system workflows. “Guest” enables infrequent users of Esko Proof to log on quickly and easily, without first having to be defined as an individual user.

The workflow “Esko Linearization” and the output device “Linearization device” are used primarily in conjunction with Esko LinTool for printer linearization. Only users with administrator rights can print jobs via this workflow.

You must configure the linearization device before you can access Esko LinTool.

If you set up a workflow and output device as part of the installation procedure, these will also be visible in System Manager.



2.3.2 Setting up system workflows

You can set up a system workflow in:

- Setup Wizard (Windows) or Setup Assistant (Macintosh)

The Setup Wizard/Assistant leads you logically through the minimum of steps necessary to set up a system workflow for the default users. You can fine tune your workflow settings later in System Manager, if required.

Normally, you will already have created a system workflow in this way when you installed Esko Proof.

- System Manager

In System Manager, you can create additional users, workflows and output devices. You can also change the configuration of existing workflows.



To set up an output device, you must have media profiles for your printer installed on the computer. If you did not install any media profiles during program installation, install them now from the software DVD.

- **Setting up in Setup Wizard/Assistant**

Setup Wizard/Assistant provides step-by-step instructions on how to configure a basic system workflow.

TO SET UP A SYSTEM WORKFLOW IN SETUP WIZARD/ASSISTANT

You can click Finish Now at any time to exit the setup procedure. Any settings that you have already made are saved.

1 In the toolbar, click System Manager.

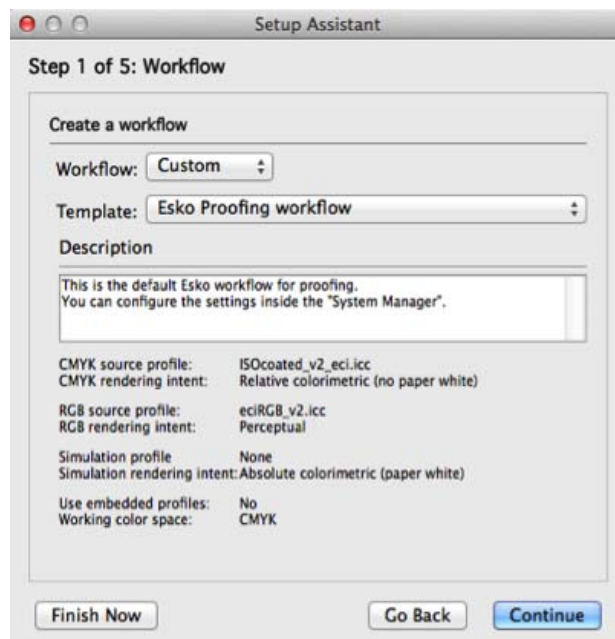
2 From the System menu, choose Setup Wizard (Windows) or Setup Assistant (Macintosh).

Introduction window



3 Click Continue to open the Workflow dialog.

Creating a workflow



4 Leave "Custom" selected in "Workflow", and "Esko Proofing workflow" selected in "Template".

5 Click Continue to display the Output device dialog.

Selecting an output device

**6 From the drop-down list, select “Create a new output device”.****7 Select the Manufacturer and Device type of your output device.**

When you make a selection, the Setup Wizard/Assistant displays the number of media profiles installed for the output device.



If no media profiles are installed, an error message is displayed. In this case, you must cancel the setup and install the appropriate media profiles from the software DVD.

8 Click Continue to open the Device connection dialog.

Setting up a connection



The screenshot shows a window titled "Setup Assistant" with the subtitle "Step 3 of 5: Device connection". The window contains the following elements:

- Connection type:** A section with two radio buttons: "System Printer" (unselected) and "Print via network" (selected). Below "System Printer" is a dropdown menu showing "-no port available-".
- IP address:** A text field containing "127.0.0.1" and a "Test" button to its right.
- Used TCP/IP Protocol is:** A section with two radio buttons: "RAW on port" (selected) and "LPR. The queue name is:". Below "RAW on port" is a text field containing "9100". Below "LPR" is an empty text field.
- Print via Port:** A radio button (unselected) with a dropdown menu showing "-no port available-" below it.
- Buttons:** At the bottom of the window are three buttons: "Finish Now", "Go Back", and "Continue". The "Continue" button is highlighted in blue.

9 Select a connection type.

- Select "Print to system printer" to print to a Windows printer that has already been set up as a system printer in Windows.

The available printers are listed in the drop-down list.



This setting is only available for Windows and the system printer must be a printer supported by Esko Proof.

- Select "Print via IP network" if you want to print via TCP/IP.

Type the IP address in the appropriate edit box. You can check whether the connection to the printer has been properly established by clicking Test. To test the connection, the printer must be switched on. If you receive an error message, consult your system administrator for advice.

Select the type of TCP/IP protocol that your printer uses for data transfer.

- Raw on port

Most printers support RAW printing to port 9100.

However, please note that this setting depends on the network settings made at the printer and may, therefore, be different.

- LPR queue

If your printer supports LPR printing, type the queue name in the edit box.

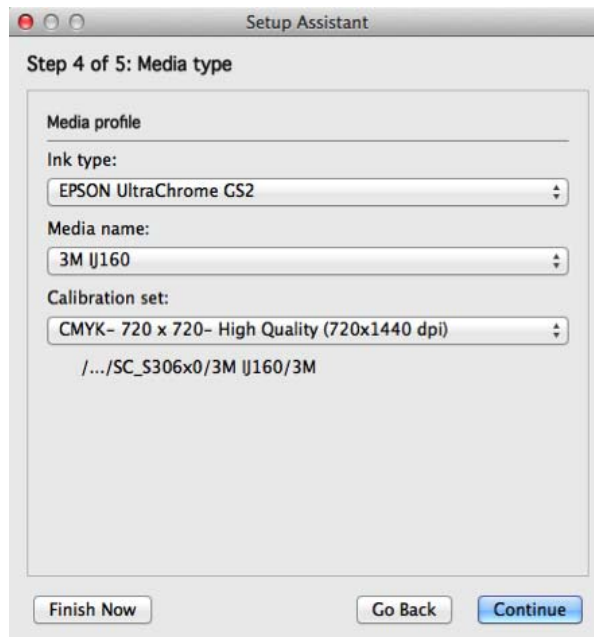
In most cases, you can leave this edit box blank. It is normally only necessary to type a queue name if you are printing via a Unix system or a print server with multiple interfaces. Refer to your printer manual for further information.

- Select "Print via port" to print to a printer connected via USB to the Server computer.

The printer must be switched on when you start Esko Proof. Otherwise, it will not be automatically detected.

10 Click Continue to open the Media type dialog.

Selecting a media type



11 Select the type of ink inserted in the printer.

12 Select the media you want to use.

Esko Proof provides media profiles that have been created for specific combinations of media, ink and resolution. Furthermore, you can implement your own custom media profiles that have been created for your exact printer.

13 Select a calibration set.

The calibration set defines a set of print conditions, and ensures that the printer's behavior is adjusted optimally to the media.

14 Click Continue to open the Media size dialog.**Selecting a media size****15 In the Media Size dialog, make media-specific settings.**

Which settings are available depends on the selected printer.

- From the "Source" drop-down list, select the source of media feed.
- From the "Format" drop-down list, select the media size. Only default sizes are available initially, but you can define your own media sizes in Esko Proof.
- If supported by your particular printer, you can select borderless printing.

16 Click Finish.

Your workflow and output device are now set up.

- **Setting up in System Manager**

Creating system workflows in System Manager gives you access to all the settings available in Esko Proof.

Once you have created a system workflow, you need to set it online.

TO CREATE A NEW USER

You can set up each co-worker as a user in Esko Proof and define user privileges for each.

1 Create a new user by either:

- Clicking New User in the toolbar
- Right-clicking on an existing user in the layout area and choosing New User from the context menu
- Choosing File > New > User

A user with the name “New User 1” is created. The User tab displays the Profile pane.

2 Define a name for the user by either:

- Double-clicking on “New User 1” in the layout area, overwriting the default name and pressing <Enter>
- Overwriting “New User 1” on the Profile pane

3 On the Profile pane, define a password. Then confirm it by re-typing it in the appropriate edit box.

4 Using the drop-down list, specify whether the new user will have administrator or user rights.

Administrators have access to System Manager and are permitted to create, set up and manage workflows. Users without administrative rights are only able to submit print jobs and make job-specific settings in Job Explorer.

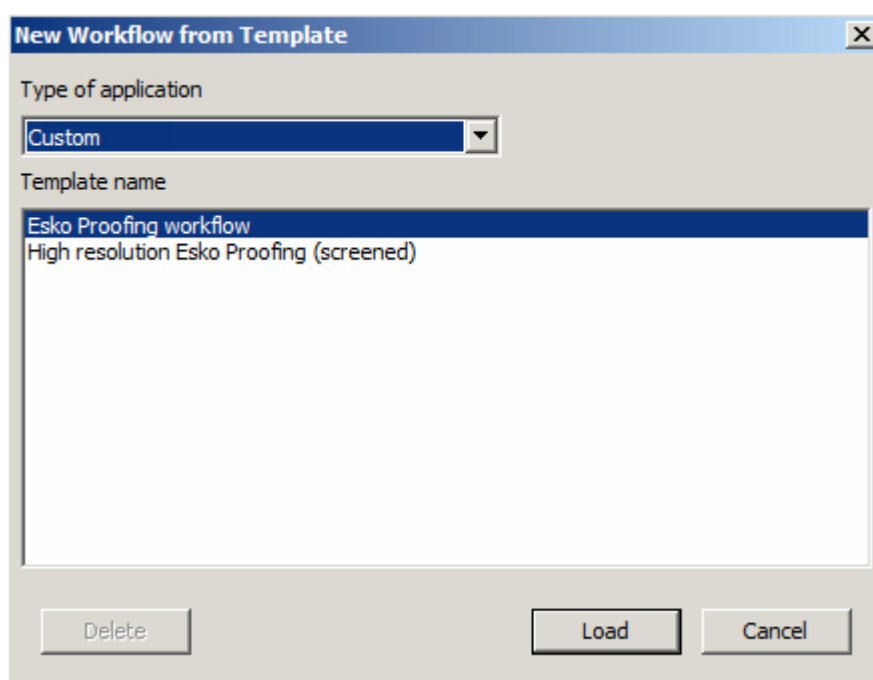
5 In the toolbar, click Save.

TO CREATE A WORKFLOW**1 Create a new workflow by either:**

- Clicking New Workflow in the toolbar
- Right-clicking on an existing workflow in the layout area and choosing New Workflow from the context menu
- Choosing File > New > Workflow

The window New Workflow from Template opens.

New Workflow from Template dialog

**2 Highlight a template in the list.**

Initially only the default workflows are available as templates. However, once you have created your own workflows, you can save them and add them to the list. Workflow templates are saved with all the settings defined for the original workflow and serve as the basis for new workflows with similar properties. This enables you, for example, to use the same workflow settings to print to different output devices, since each workflow can only be connected to one printer at a time.

3 Click Load.

A new workflow with the name of the selected workflow template is created, supplemented by a consecutive number.

4 Define a unique name for the workflow by either:

- Double-clicking on the new workflow in the layout area, overwriting the default name and pressing <Enter>
- Overwriting the default name on the General pane of the Workflow tab

5 Type a brief workflow description, if required.

The default settings are automatically displayed, but you can add any additional information.

6 Define your preview and file deletion settings, if required.

7 Check the settings which affect the processing and print speed of your jobs.

8 On the remaining tabs, make any additional settings.

For example, on the Layout tab, you can set up your workflow for automatic nesting or step & repeat.

9 When you are finished, save your workflow by clicking Save in the toolbar.



To save your newly created workflow as a basis for further workflows, choose Save as Template from the File menu and define a name.

The next time you create a new workflow, it will be displayed in the window “New Workflow from Template”.

TO CREATE A NEW OUTPUT DEVICE

1 Create a new output device by:

- Clicking New Output Device in the toolbar
- Right-clicking on an existing output device in the layout area and choosing New Output Device from the context menu, or
- Choosing File > New > Output Device

2 Set up the new output device.

See also:

“User settings” on page 35

“Workflow settings” on page 35

“Output device settings” on page 63

• **Setting system workflows online**

When you have created a system workflow, the next step is to set it online.

When a workflow is fully online, all jobs are automatically processed and printed as soon as they are loaded in Esko Proof.

TO SET A SYSTEM WORKFLOW ONLINE

1 Check that your system workflow is properly connected.

Users, workflow and output must be visibly joined by a black line.

Connected system workflows depicted by a black line



To connect two objects, click object one (e.g. user) and drag the cursor across to object two (e.g. workflow). Make sure to drag the cursor from the margin area of an object. Dragging from the center rearranges the order in which your users, workflows or output devices are displayed.

2 Check that your system workflow is online.

A fully online system workflow is indicated by green arrows from user through to output device.

See also:

“Making changes to system workflows” on page 64

Chapter 3: Getting to know your software

The user interface of Esko Proof is divided into the following two program windows, which you display by clicking the appropriate tab in the program window bar:

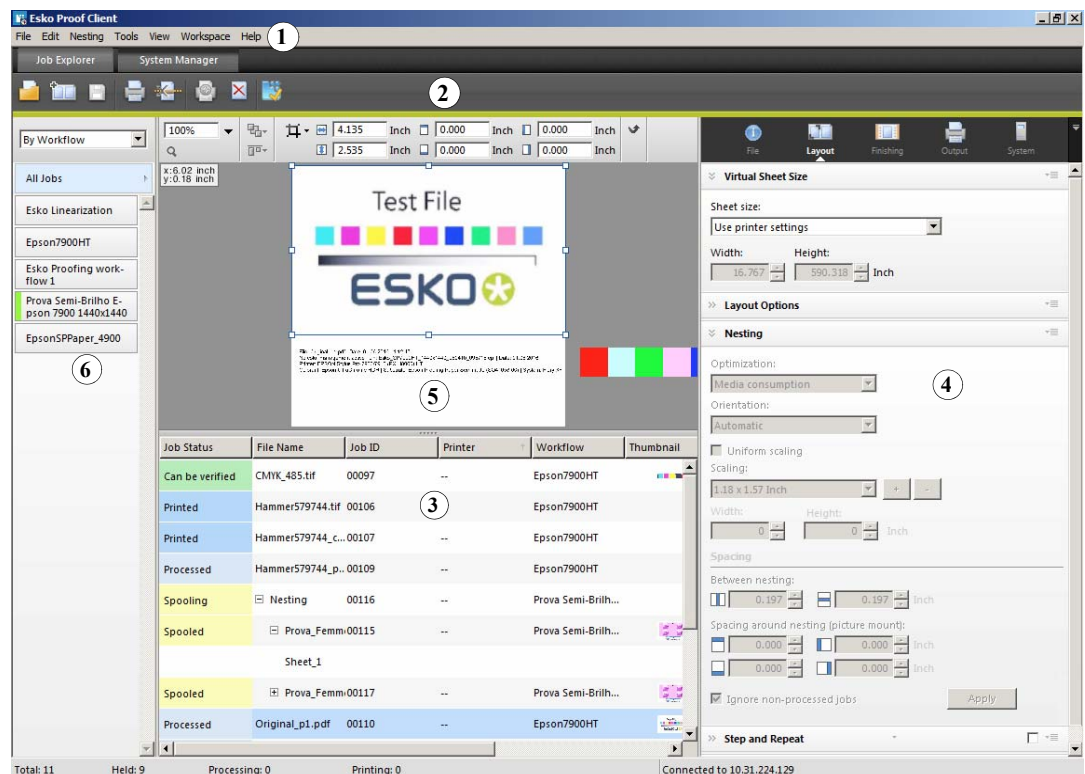
- Job Explorer (administrators and users)
Here you load and apply settings to your print jobs.
- System Manager (administrators only)
Here you set up and configure your workflows and printers, create users and grant them access rights to print via specific workflows.

3.1 Job Explorer

Job Explorer is where you load, organize and preview jobs, and make job settings.

Job Explorer

- 1 Menu bar
- 2 Toolbars
- 3 Job list
- 4 Property inspector
- 5 Preview window
- 6 Selector



The job list provides an overview of loaded jobs. A selected job is previewed in the preview window and you can configure job-specific settings in the property inspector.

The Selector acts as filter, listing jobs according to workflow, output device or job status. The button “All Jobs” lets you view all your jobs in the job list.

The job list contains job-specific information, such as job status and job name. Each job status is indicated by a different color.

You can add or remove columns to display the information that is most important to you by right-clicking on a column heading and choosing the required items from the context menu.

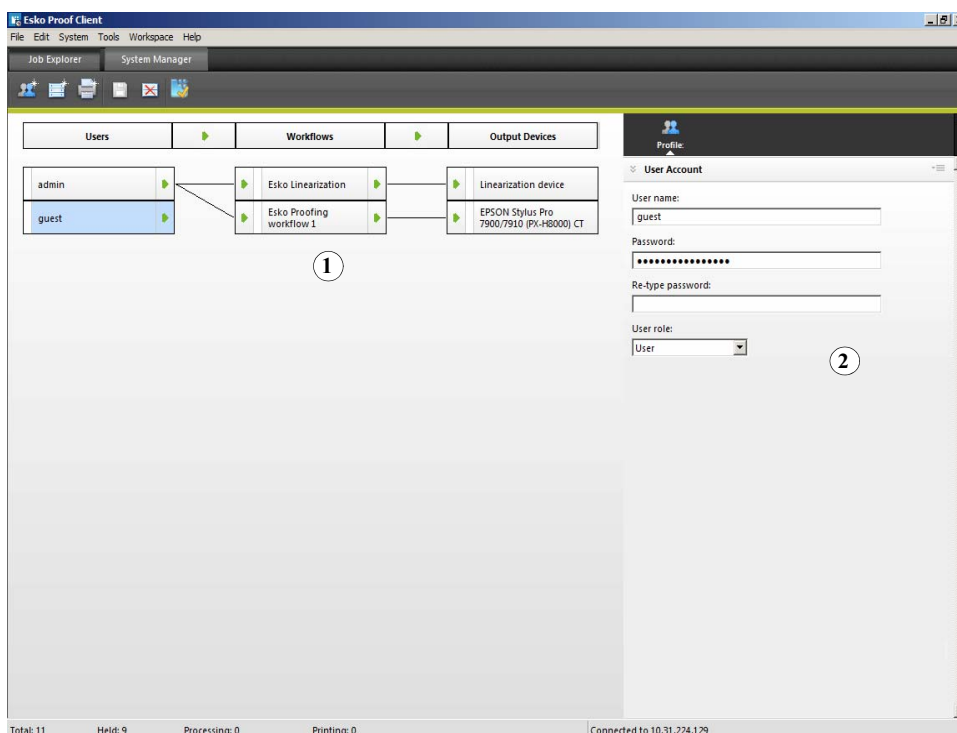
You can also change the order of the columns in the job list by holding down the mouse button on a column heading and dragging to the left to a different position. The column heading “Job Status” and “Name” are fixed and cannot be repositioned or removed.

3.2 System Manager

System Manager is where you create and configure system workflows. It is available only to users with administrator status.

System Manager

- 1 Layout area for creating, configuring and managing system workflows
- 2 Property inspector



System Manager gives you a clear overview of:

- which users can print to which workflows
- the output device assigned to each workflow

In System Manager, you can halt jobs at certain stages of the workflow. This may be desirable to perform certain tasks. For example, a workflow can be diverted quickly and easily to another output device if a particular printer needs servicing.

The changes you make in this window are applied to all jobs in the job list that have not yet been processed.

See also:

“Setting system workflows online” on page 23

Chapter 4: Settings in System Manager

These sections describe the individual settings concerned with creating and setting up system workflows. They deal only with those settings available in the basic software configuration. Settings related to add-on modules are dealt with in the respective sections.

4.1 Menus

4.1.1 File menu

- New
 - User

Choose this command to add a new user.
 - Workflow

Choose this command to create a new workflow that is based on one of the default workflow templates or on any other workflow that you have previously saved as a workflow template.
 - Output Device

Choose this command to create a new output device.
- Import Environment

Choose this command to load a backup file of your system workflow environment.
- Save

Choose this command to save all the changes made to the system workflow.
- Save as Template

Choose this command to save a new workflow template you have created under any chosen name. Workflow templates form the basis for new workflows with the same or similar settings.

- Save as Environment

An environment is a combination of workflow and printer. Choose this command to create a backup copy of your workflow and printer settings.

- Backup

Choose this command to create a backup copy of your system workflows.

- Restore

Choose this command to restore a previously backed up copy of your system workflows.

- Login

Choose this command to display the “Login” dialog. This command enables you to log in under a different user name or to log on to a different Server.

- Logoff and Exit

Choose this command to log off and exit the Esko Proof Client. The next time you start Esko Proof the “Login” dialog opens.



It is advisable to log off with this command if more than one person is using the same computer. This ensures that each user logs on to his own workflow settings.

- Exit

Choose this command to exit Esko Proof. The next time you start Esko Proof you will automatically be logged on with the same user data.

In the Macintosh version of the software, you will find the command in the Esko Proof menu.

4.1.2 Edit menu



- Languages (Windows only)

Choose this command to change the language in which the user interface is displayed. You must restart the Esko Proof Client before the new language takes effect. By default, the language of the operating system is displayed.

On a Macintosh, you can change the language the international settings in “System Preferences”.

If you change the display language, make sure that the help set for that language is installed. Otherwise, no help will be available from the Help menu. You can install help sets in additional languages from the software DVD.

Please note that to display one of the supported Asian languages on a PC, Esko Proof must be running on an operating system that supports 2-byte fonts.

- Measurement system

Choose this command to define which system of measurement is used in Esko Proof. The default setting corresponds with the system of measurement set up in the operating system. However, you can choose between millimeter, centimeter, meter, inch and foot.

- Monitor Profile

Esko Proof provides you with the opportunity to verify color accuracy on a computer screen. This is known as “soft proofing”. However, much like the color output of each printer can vary greatly, so each monitor displays color slightly differently. To overcome this problem, it is important that the monitor is regularly calibrated to a certain standard. Monitor calibration consists of two steps:

- adjusting the brightness and control settings on the monitor itself to set values and
- creating a monitor profile, which defines the white point, gamma and RGB phosphor settings

Windows and Macintosh computers provide standard monitor profiles as part of the operating system software. In Esko Proof you can select a monitor profile that you have created yourself or one provided with the operating system.

- Copy

Choose this command to copy a selected user, workflow or output device to the clipboard.

- Paste

Choose this command to insert a duplicate of a user, workflow or output device from the clipboard.

- Delete

Choose this command to delete the selected user, workflow or output device.

- System

This command enables you to make global settings to connect and disconnect users, workflows and output devices to and from a system workflow.

- User

This command contains user-related settings which enable you to:

- Check which workflows a selected user is connected to
- Check if the selected user is online/offline
- Connect the selected user to all workflows



Users with no administrator rights cannot be connected to the Esko Linearization workflow.

- Disconnect a selected user from all workflows
- Create a new user
- Delete the selected user

- Workflow

This command enables you to:

- View which users are connected to the selected workflow
- View which output device is connected to the selected workflow
- Set up a connection from user to workflow so that user can load jobs in Esko Proof
- Set up a connection to an output device so that jobs can be processed and printed
- Connect all users to the selected workflow
- Disconnect all users from the selected workflow
- Disconnect the output device from the workflow
- Save a system workflow as an environment
- Create a new workflow
- Delete a selected workflow

- Output Device

This command enables you to:

- View which workflows are connected to the selected output device
- Check if a selected output device is online/offline
- Connect all workflows to the selected output device

- Disconnect the selected output device from all workflows
- Create a new output device
- Delete a selected output device
- Assign a color to the output device

4.1.3 System menu

- Setup Wizard (Windows)/Setup Assistant (Macintosh)

Leads you step by step through the settings necessary to create new system workflows or to make changes to existing ones.

- Clean Up

Choose this command to delete files that are no longer needed. You can choose to delete output files, preview files, temporary files, files loaded in the job list and log files. Alternatively, select "All" to delete all.

4.1.4 Tools menu

- Esko Verification

If you have a valid license for Esko Verification, you can choose this command to start it.

- Job Explorer

Choose this command to switch to Job Explorer.

- System Information

Choose this command to display information about the resources used and the jobs processed by the Esko Proof Server.

4.1.5 Workspace menu

- Property Tabs

This displays the tabs available in the right pane. To hide a tab, click an item that has a check mark next to it.

To show a hidden tab, click an item that does not have a check mark next to it. To show all hidden tabs, click All.

4.1.6 Help menu



- Help

Choose this command to start the HTML online Help for Esko Proof.

If you change the display language, make sure that the help set for that language is installed. Otherwise, no help will be available from the Help menu. You can install help sets in additional languages from the software DVD.

- About

Choose this command to open a window with details of your program version.

In the Macintosh version of the software, you will find the command in the Esko Proof menu.

4.2 Toolbar



New User:

Click this button to add a new user.



New Workflow:

Click this button to add a new workflow to the system workflow. New workflows are based on previously saved workflow templates.



New Output Device:

Click this button to add a new printer.



Save:

Click this button to save your settings.



Delete Selected Object:

Click this button to delete a selected item.



Esko Verification:

Click this button to start Esko Verification (if you have a license for it) — a tool for verifying the colors on your proof.

4.3 Property Inspector

The Property Inspector displays the settings of the selected:

- user
- workflow
- output device

All the settings you make in System Manager are made for a selected workflow and are applied to all jobs processed via that workflow. Job-specific settings are possible in Job Explorer, which override the settings made in System Manager.

The Info pane on the Server tab is accessible from all areas of System Manager. It displays information about current system utilization and the job status of all jobs. It also displays the amount of used hard disk space on your computer.

Esko Proof requires a certain amount of free disk space. Be aware that if less than 2.5% free disk space is available, you may not be able to load and process jobs in Esko Proof.



4.3.1 User settings

The users settings are available when you select a user in the layout area.

- **Profile tab > User Account pane**

- User name

Use this edit box to type a name for a new user or change the name of an already defined user.

- Password

Define a password. Note that passwords are case-sensitive.

Confirm the password by retyping it in the appropriate edit box and clicking Apply.



You may change the password of the default administrator if you wish. However, please note that if the default administrator is the only user with administrator rights and the password is misplaced, you will no longer be able to access the software to make settings at administrator level.

- User role

Select whether the user will have administrator or user rights.

Users with administrative rights have access to System Manager and are permitted to create, set up and manage workflows.

Users with no administrative rights are only able to submit print jobs and make job-specific settings in Job Explorer.

4.3.2 Workflow settings

The workflow settings are available when you select a workflow in the layout area.

- **Workflow tab > Basic Information pane**

- Name

Type a name for a new workflow or change the name of an already defined workflow. It is not possible to change the name of the default linearization workflow.

- Description

The Description box gives details of some of the more important settings of the template used to create the workflow. You can edit the text to reflect changed settings or add comments.

- Delete source files

Use the drop-down list to choose when job files saved to the JobFolder are automatically deleted. Files can be deleted:

- Never
- Automatically after printing
- After a specified number of days. Type the time span in days in the edit box.

Any setting you make for source file deletion is automatically applied to output/preview files. It is not possible to delete source files alone.

- Delete source files from hotfolder

Select this check box to delete job files copied to a hotfolder.

- Delete output/preview files

During job processing, Esko Proof creates a print file of each job and saves it to the Output folder. If the preview function is activated for the workflow, a preview file is also saved to the Preview folder. Use the drop-down list to choose when output and preview files saved to these folders are automatically deleted. Files can be deleted:

- Never
- Automatically after printing
- After a specified number of days. Type the time span in days in the edit box.

If you have previously made a setting to delete source files, the same setting is automatically applied to output/preview files. An independent setting is only possible if you have specified that source files are never to be deleted.

- **Workflow tab > Preview pane**

- Resolution

Select a radio button to define the resolution of a displayed preview in dpi or pixel.

- **Workflow tab > Speed pane**

- High priority workflow

Select this check box to ensure that all jobs printed via this workflow go straight to the front of the print queue, i.e. if more than one workflow is printing to the same printer, all jobs received via a high-priority workflow will be output first.

- Print bi-directional

If your printer supports this feature, select the check box to increase print speed. Bi-directional printing is faster than unidirectional printing, as the print head prints in both directions, but may provide less accurate results.

Please note that some settings in the linearization may be overwritten.



- RIP and print on the fly

Select this check box if you want your jobs to start printing as soon as processing starts. If this check box is not selected, printing will not commence until job processing has been fully completed.



Simultaneous processing and printing may cause the printer to pause from time to time. This can lead to undesirable lines on the printout.

- RIP Resolution

Use the sidebar to define whether speed or quality is the more important factor during processing. By reducing the resolution at which the print job is processed you increase the speed of output.

Processing a print job at a low resolution may result in a draft-quality output, whereas printing at a high resolution setting will take longer. It is not possible to process a print job at a higher resolution than the output resolution.

- **File tab > Job detection pane**



To enable job detection settings, you must first set the workflow offline. To do so, click on the green arrow at workflow entry. It becomes a red square to show that the workflow is offline.

- Hotfolder

Define the folder that is routinely monitored by Esko Proof for incoming files. When new files are detected, they are automatically loaded for processing.



A hotfolder is usually located in a network environment where it can be accessed by any number of users who do not have the Esko Proof Client installed on their computers.



The Esko Proof Server runs on Windows as a service. To enable communication with hotfolders via the network, you need to assign network access rights for the Esko Proof Server by creating a user with administrative rights. See “Printing via a hotfolder” on page 101.

If Server and Client are installed on the same computer, click Choose to navigate to the folder you wish to use as a hotfolder. A hotfolder can be located anywhere within an Esko Proof Server installation folder or anywhere on the network.



Please be aware of the consequences of inadvertently defining your computer desktop or a network drive as a hotfolder. This will cause all the files saved to this location to be loaded.

If Server and Client are installed on different computers, you can only print to hotfolders located inside the JobFolder of the Esko Proof Server application folder.



It is recommended that you use a computer on which an Esko Proof Server is installed to set up hotfolders.

- Enable load balancing

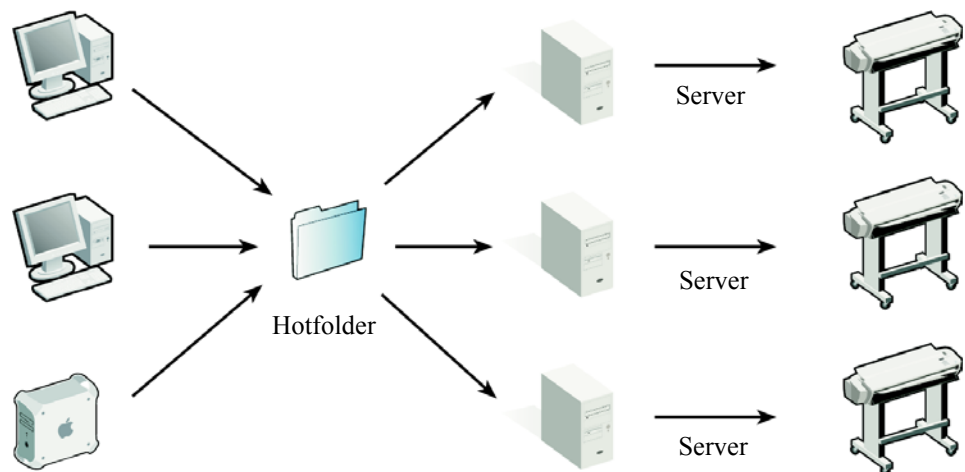
If the selected hotfolder is being monitored by more than one workflow, you have to select this check box to instruct Esko Proof to distribute the workload by diverting print jobs to the first idle workflow that becomes available.

This ensures that print jobs are always output as quickly as possible, e.g. if one workflow is busy processing a large-volume print job or if one Server encounters a problem. Once a job starts being processed, it is locked to other workflows. This prevents jobs being processed by two workflows simultaneously.

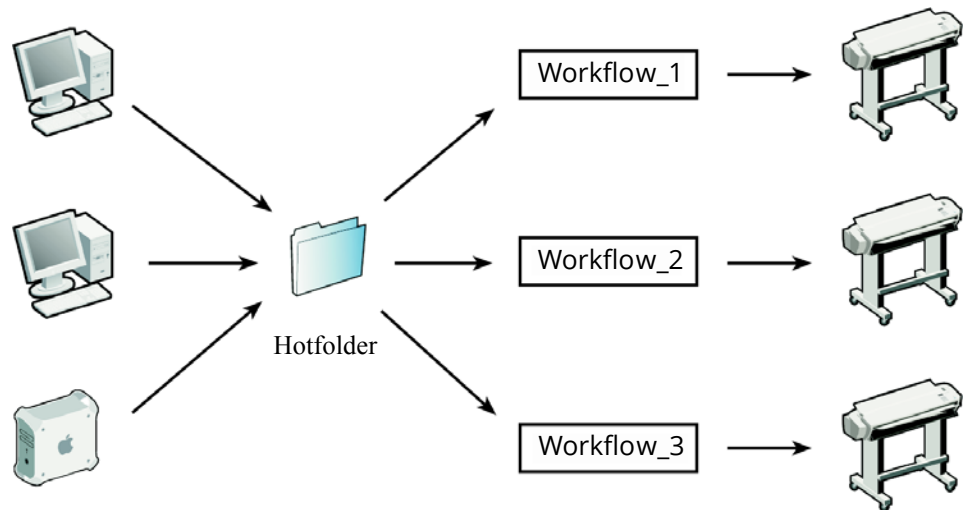
The advantage of load balancing is that it utilizes all the available system resources as efficiently as possible.

The following diagrams illustrate two possible scenarios for using load balancing.

Example of load balancing using different Servers



**Example of load
balancing using
different workflows**



Please note that workflows printing via the same hotfolder may not necessarily be configured identically. This can result in unsatisfactory color results if the workflow settings are different or if a different printer is connected.

- **Create virtual printer**

This setting sets up a virtual printer for the workflow. It can be selected from the print dialog of any application and thus enables users to print directly to Esko Proof.

To set up a virtual printer, you must first define a hotfolder on this pane. Then, select the check box and define a name for the virtual printer. This is the name that will be displayed in the printer list of the application.

The virtual printer is created when you switch the workflow online at workflow entry.

- Remote job import

A remote container saves a CMYK job and its settings in a single file. A remote container is used primarily to verify the color accuracy of a job that is printed at multiple sites.

When you process a remote container in Esko Proof, you can apply the job's color management settings or the workflow's color management settings.

- Use settings of remote job

This setting ensures that the original color management settings, including the simulation (reference) profile, are automatically selected when you load the job.

In this case, the color management settings defined for the workflow will be ignored.

- Use settings of workflow

This setting ensures that the color management settings of the workflow are automatically selected when you load the job.

In this case, the color management settings of the original job will be ignored.

See also:

"Making changes to system workflows" on page 64

"Printing and monitoring print jobs" on page 98

"Printing via a hotfolder" on page 101

"Esko Proof Server Configuration (Windows only)" on page 111

- **File tab > PS/EPS/PDF pane**

- Stop job processing if font is missing

When you select this check box, job processing is halted if Esko Proof detects a missing font. The missing fonts are listed. However, you can still preview jobs correctly.

If the check box is left unchecked, print jobs with non-available fonts are output using the default font Courier instead.

- Divide multi-page PDF files into single-page jobs

By default, a multi-page PDF job is loaded as a single job. It means that job settings are applied to all pages. To make individual page settings, load each page as a separate job.

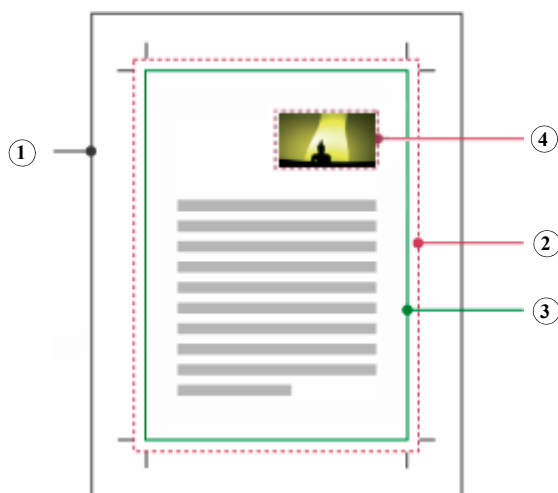
- Size definition:

You can specify which PDF setting is applied to calculate the page size.

- "Media box" describes the size of the output media and is displayed in the print dialog. All the other boxes are smaller and are found inside the media box.
- "Crop box" defines the region to which the contents of the page are to be clipped (or cropped) when displayed or printed. Unlike the other boxes, the crop box has no defined meaning in terms of physical page geometry or intended use. It merely suggests where the page should be clipped.
- "Bleed box" defines the bounds to which the contents of the page should be clipped when output in a production environment.
- "ArtBox" defines the meaningful content of the page, including potential white space.
- "Trim box" defines the intended dimensions of the finished page after trimming. This type of box is used by imposition applications for arranging the order of pages.

PDF boxes

- 1 Media box
- 2 Bleed box
- 3 Trim box
- 4 ArtBox



- "Calculate page size": select this check box to instruct Esko Proof to calculate the page size. This is done by RIPping the whole document at a low resolution. It is slower than extracting the information from the bounding box but produces more accurate results.

- In-RIP separation

In-RIP separations are spot colors that have been defined in an external DTP or in a graphics program and saved as a single job file. You can output in-RIP information as follows:

- Enable

PDF jobs with in-RIP separations are printed as separated files (C, M, Y, K, plus spot colors). Jobs with no in-RIP information are simply printed composite (CMYK).

- Disable

In-RIP information is ignored. PDF jobs are printed composite (CMYK). Note that pre-separated files are always printed separated, even though they do not contain in-RIP information.

- Force

In-RIP information is applied to PostScript level 3 and PostScript level 2 jobs, as well as to PDFs that were created with older versions of Acrobat.

PostScript files with in-RIP separations normally require a special PostScript command to ensure that the in-RIP information is interpreted correctly. However, not all PostScript printers support in-RIP separations — PostScript level 3 does, PostScript level 2 does not.

By forcing in-RIP separation, you make sure that the in-RIP information from the graphics program is processed, even if the special PostScript command is missing, and regardless of the type of PostScript printer that was used to create the file.

If you do not force the use of in-RIP separation, jobs are output as follows:

- PostScript jobs that were created for a PostScript level 3 printer are output separated on printers that support in-RIP separation. If the printer does not support in-RIP separation, the job is output composite.

- PostScript jobs that were created for a PostScript level 2 printer are always output composite, because spot color separations cannot be correctly interpreted.

- Simulate overprinting in composite jobs

This check box enables you to determine whether overprint settings defined in your image file are applied during printing.

Normally, when two objects of different colors overlap, there is a knock-out effect, i.e. they will not print on top of each other. Intentionally printing one layer of ink on top of another is known as overprinting. Overprinting is sometimes used to prevent gaps between adjoining colors.

This setting lets you simulate overprinting in composite jobs. This would otherwise not be possible, since overprinting is not supported by composite jobs.

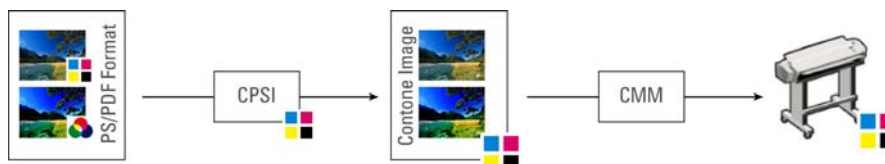
By selecting the check box and examining the preview, you can check the behavior of possible overprint settings in your file before printing.

This setting has no effect on separated jobs.

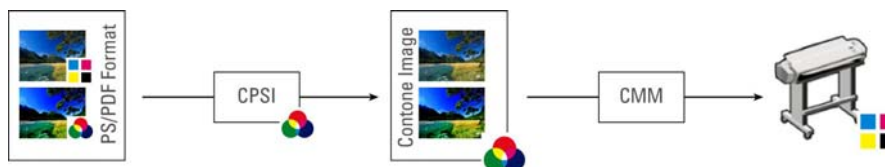
- Working Color Space

Here you can define a color mode for your input data. For example, if your PDF is composed mainly of RGB images, select "RGB". In this case, the RGB source profile selected on the "Color" tab is automatically applied to the entire PDF. Similarly, selecting "CMYK" as the working color space causes your PDF to be output using the selected CMYK source profile. For proofing, you must use the CMYK working color space.

CMYK workflow



RGB workflow



- EPS Job Detection

- Waiting time for job completion

This defines the time span during which Esko Proof waits for incoming files that belong to a particular print job. Once this time span has elapsed, the software assumes that all files have been received and starts printing.

The default setting is five seconds. However, depending on the size and type of your print jobs, you may wish to change it. For example, for some large-volume separated jobs, a time span of sixty seconds may be needed to ensure that all the separations are received and processed as one print job. Alternatively, for an EPS composite file a setting of one second may well be sufficient to ensure that your print jobs are output as quickly as possible.

- Default resolution

With this setting, you can override the default resolution of 72 dpi. Occasionally, Esko Proof has difficulty correctly extracting and interpreting the resolution of incoming PS and PDF files. Normally, 72 dpi is perfectly adequate. However, in a very few cases, it is possible that rounding down errors may occur due to internal processing in Esko Proof. This can cause a white edge to be output along the right and bottom edges of images, the result of missing pixels.

This is only really noticeable in step & repeat jobs, where a thin white line may be visible between images, although no spacing is defined.

To overcome the problem, Esko Proof provides the option to define an input resolution of between 1 dpi and 720 dpi. Selecting the input resolution size from the image helps to prevent rounding off errors.

- PDF print engine

- PDF PrintEngine

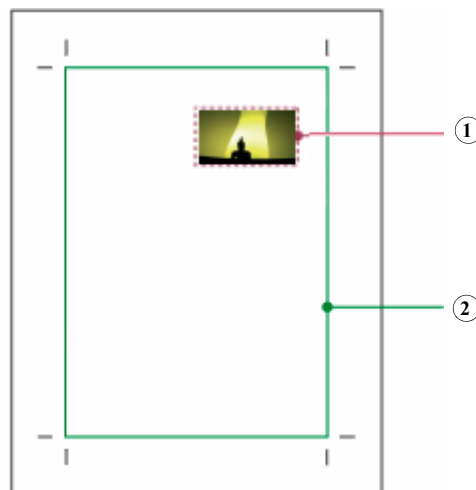
By default, print jobs are processed using the Adobe PostScript 3 Engine, which converts source files first to PostScript format. If your source files are in PDF format, you can choose between “Adobe PostScript 3 Engine” and “Adobe PDF Print Engine”. The Adobe PDF Print Engine processes PDF files without converting them to PostScript first.

- Image EPS/PDF print engine

This setting can be applied to a single EPS image saved in a PDF frame.

PDF boxes

- 1 EPS image
- 2 PDF frame



The setting “Native (Default)” specifies that only the EPS image is output, i.e. without the surrounding PDF frame.

The setting “Adobe PostScript 3 Engine” specifies that the image file is output with the PDF frame. This setting is automatically applied if the job contains more than a single EPS image.

- **File tab > Job Merge pane**

You can use the job merge feature to superimpose one job on top of another. The master job forms the background image for your content jobs.

You can merge any two jobs. The only prerequisites are:

- The content and master jobs must have the same page size. A size difference of plus or minus 0.1 inch is permitted.

- The background color of the content job must be defined as 100% transparent.
- Master and content jobs must have the same file extension.

If the content job is a multi-page document, the master job is applied to all pages of the document.

If page layout settings (rotation, scaling, etc.) or crop marks are applied to the content job, the settings are also applied to the merged job. However, color management settings are not transferred.

In the boxes under “Jobs with the same file name and including the keyword” option, type the file names of your master (background) and content jobs.

The file names must contain a keyword that is common to both master and content jobs.



- **Layout tab > Virtual Sheet Size pane**

- Sheet size

From the drop-down list, select whether you want to print:

- using the paper format set up for the output device (select “Use printer settings”) or
- define a custom media size to override the setting made for the output device.

To define a custom media size, type the required sheet dimensions in the “Width” and “Height” edit boxes.

- Print jobs that exceed printable area

Normally, if a job does not fit on the selected sheet size, the job is not printed. If you select this setting, the job is printed, but the portion that does not fit on the sheet is cropped.

- **Layout tab > Layout Options pane**

- Rotate

Select whether you want to rotate your print job. Choose from “Do not rotate”, “Rotate 90°”, “Rotate 180°” or “Rotate 270°”.

If you select “Minimal media consumption”, Esko Proof will automatically rotate your images, if necessary, to keep wastage to a minimum.

- Mirror

Select the appropriate check box to print a horizontal or vertical mirror image of your print jobs.

- Scale page

Select a scaling factor from the drop-down list to define how your print job will be adapted to the size of media you are using. The following settings are available:

- Do not scale

With this setting, your image is printed in its original size. A warning will be displayed if it will not fit fully on the media.

- Fit to sheet size

With this setting, your image is scaled so that either the height or the width of your image is adjusted to the printable height or width of the media.

- Fit to width

With this setting, your image is scaled horizontally so that the width of your image is adjusted to the printable width of the media.

However, this may mean that the height of your image is clipped. You can check the preview to see what effect this setting will have on the printed image and make sure that it will fit properly on the selected media size.

- Scale job percentually

With this setting, you can define an enlargement or reduction factor for your image. A value of more than 100 increases the size of your image, whereas a value of less than 100 decreases the image size. It is possible to define different scaling factors for width and height. Please note that defining different factors for width and height will result in a distorted output of your image.

This setting is overridden by the uniform page scaling setting on the Nesting pane.

- Scale job numerically

With this setting, you can define a new height and width for your image.

This setting is overridden if uniform page scaling is defined on the Nesting pane.

- Position

To reposition the page on the sheet, you can type in the x/y coordinates for the top left-hand corner of the page on the sheet.

- Align page to sheet

You can also define the page's alignment by selecting the appropriate cell in the diagram.

For example, if you check the middle cell, your job will be output centered horizontally and vertically on the selected media. This setting takes job margins into account.

If the output device is set up to print on roll media, only horizontal alignment is possible.

- Job margin

You can also define margins for more precise positioning of images. Printer hardware margins are still applied.

- Align footer

Changing the page alignment does not automatically change the footer alignment. For example, the footer remains left-aligned on the sheet, even if the page is centered.

Select this option to apply the alignment setting you chose on the "Align page to sheet" grid to both page and footer. In this case, page and footer are realigned as if they were grouped together.

- **Layout tab > Nesting pane**

Select the check box at the top of the “Nesting” pane to output all print jobs loaded via this workflow as part of a nesting. This makes the settings on the “Nesting” pane available.

If this check box is not selected, you can still create nestings manually.

In an automatic nesting workflow, all loaded jobs are grouped together and output as a single print job according to the settings made on this tab.

In a manual nesting workflow, you can compile your own nestings in Job Explorer.

Nesting and step & repeat cannot be used simultaneously.



- Create nesting after a minimum of

Define the criterion for creating a nesting. As soon as the criterion has been met, a nesting is created from the loaded jobs. All subsequently loaded jobs become part of the next nesting.

The following settings apply only if automatic nesting has been selected.

- ...% of the sheet is filled

Select this radio button and define what percentage of the sheet must be filled before a nesting is output.

- ...% of the line is filled

Select this radio button and define what percentage of the line must be filled before a nesting is output. This setting is useful if you are printing on a roll substrate.

- Always nest after

Select this check box and define a period of time after which Esko Proof will automatically output a nesting of all loaded images.

This setting has priority over the other auto-nesting settings, e.g. a nesting will be printed after the set period even if the minimum percentage of the sheet or line has not been filled.

- Optimization

Select a radio button to define whether images should be:

- Positioned to fill as much as possible of the available space on the media or
- Aligned so that they can be cut out using as few straight horizontal cuts as possible.
- Aligned so that they can be cut out using as few straight vertical cuts as possible.

- Orientation

Pages can be nested in their original orientation, in portrait format, or in landscape format. You can also permit pages to be automatically rotated, if doing so will make better use of the available space on the sheet.

- Uniform scaling

By selecting this check box you can define a uniform output size for all jobs. The combo box contains default sizes. However, you can also create your own scaling sizes by typing a width and a height in the combo box, e.g. 150 x 90, and clicking the plus (+) button. All custom scaling sizes are defined in millimeters.

You can delete a custom scaling size by selecting it in the combo box and clicking the minus (-) button. It is not possible to delete default scaling sizes.

This setting overrides the scale job percentually and scale job numerically settings on the Job Layout pane.

- Spacing between nesting elements

Use the edit boxes to define the vertical and horizontal gap between pages on the nesting.

- Spacing around nesting

You can also define a border around the nesting to simulate a picture mount. This setting takes into account the non-printable margin.

- Ignore non-processed jobs

By default, a nesting is not printed if it contains a page that cannot be processed — for example, if a job contains unknown spot colors. Exception: if the nesting contains a page that does not fit on the sheet, the nesting is still printed, but without the oversized page.

By selecting “Ignore non-processed jobs”, you can instruct Esko Proof to print the nesting and to exclude jobs that cannot be processed.

- **Layout tab > Step and Repeat pane**

The step-and-repeat options enable you to create multiple copies of a job and output that as one print job.

Step & repeat



Step & repeat jobs can also be created from multi-page documents. Each page of the loaded print job forms a new step & repeat page. The step & repeat settings are applied identically to all pages. This enables you to output step & repeat jobs on a duplex printer for double-sided printing.

Select the “Step and Repeat” check box to print multiple images of a single print job according to the layout settings defined on this tab.



Automatic nesting and automatic step & repeat cannot be used simultaneously.

The settings you make on this tab can be grouped together and saved in the form of a preset.

Initially, no presets are available. However, once you have made settings on this pane, you can save them under a defined name. The preset becomes immediately available for selection from the drop-down list.

- Total number of copies

Select this radio button and define the number of copies you want to create. The original image is included in the total number of copies. Thus, if you define “8”, it means one original and seven copies.

- Fill sheet

Select this radio button to fill the selected sheet size.

- Rows and columns

With this setting you define the number of rows and columns to fill. Select the appropriate check boxes to fill as many rows or columns as will fit on the sheet size.

Alternatively, to define a specific number of rows or columns, deselect the appropriate check box. Then use the edit box to type in the required number. The default setting is one row and one column, i.e. one image.

- Spacing

Use this setting to define the horizontal and vertical gap between images. The illustration above shows a horizontal and vertical spacing of 1 mm between images.



It is possible to output step and repeat patterns as tiles by defining a sheet size that is bigger than the media size set for the printer.

- **Layout tab > Job Ticket pane**

On this pane, you can select to output a job ticket with your jobs.

A job ticket contains information pertinent to the print job. It lets you know which settings were applied to achieve the print result, e.g. printer model, media, ink, profiles, rendering intents, print resolution, scaling factor.

Job tickets are printed at the bottom of jobs. When a control strip and a job ticket are printed, they are next to each other, with the job ticket on the left and the control strip(s) on the right. If there is not enough space to fit both on one line, the control strip is printed on a separate line below the job ticket.

- Job Ticket for Page

Select this to create a job ticket for single jobs, or a job ticket for each page of a nesting.

- Job Ticket for Nesting

Select this to create a single job ticket for a whole nesting.

“Job Ticket for Page” and “Job Ticket for Nesting” have the same job ticket options available.

- Job ticket preset

If you have already created a preset you can select it here, otherwise click the Edit... button to fill in your job ticket settings in the Job Ticket Editor.

Job ticket

Job Ticket Editor

Preset:
 No presets available [Save... Delete...]

⌵ **Job Ticket Image**

None [Upload... Delete] PREVIEW
 TIFF, JPG max. 5cm x 5cm

⌵ **Ticket Line 1**

☐ Document name ☒ File Name
☐ File format ☐ Job ID
☒ Date and time of print

⌵ **Ticket Line 2**

☒ ICC profile names ☒ Rendering intents
☒ Linearization ☐ Visual correction

⌵ **Ticket Line 3**

☐ L*a*b 3cc ☐ Spot color 3cc
☐ Color Adjustment ☐ VPC
☐ SPT ☐ Clean color
☒ Printing layers

⌵ **Ticket Line 4**

☐ Workflow ☒ Printer name
☐ Scaling ☐ RIP resolution
☐ Final run characteristics ☐ Print resolution

⌵ **Ticket Line 5**

☒ Colorant ☒ Substrate
☒ System designation

⌵ **Ticket Line 6**

☐ Spot color table ☐ Spot color names
☐ Number of copies ☐ User-defined text

[Reset] [OK] [Cancel]

Job tickets consist of an image (optional) and six different lines. You can choose which information is output with your

jobs by selecting the appropriate check boxes. In Job Explorer, the preview displays a generic job ticket only.

- Job Ticket Image

The image is always displayed on the left of the job ticket. By default, you can choose between no image and the Esko logo. However, you can upload any image file in JPEG or TIFF format, e.g. your own company logo. To add your own image, browse to the chosen file. Then click Upload...

The logo size is limited to a maximum of 5 x 5 cm. If you upload a file that exceeds these measurements, it will be scaled proportionally so that either the width or the height is reduced to 5 cm. Images that are smaller than 5 x 5 cm are output in their original size. Logos are always output color managed.

- Ticket Lines 1-6

Select the information you want to include in the job ticket.

Line 6 has room for user-defined information.

If you work regularly with different job tickets, it is a good idea to save your settings as a preset. A preset is a template for a group of settings that is saved under a unique name. The next time you set up a job ticket, you need only to select the preset name.

- Must not exceed page size

If too little space is available to display job ticket and control strip in one line, the control strip is printed on a second line underneath.

- Maximum width

The default width of job tickets is the width of the page, minus the width of selected control strips, which have a higher priority.

- Maximum height

The default height for job tickets is 5 cm. If a job ticket exceeds the defined ticket height, it is cropped.

- Vertical/Horizontal distance

Use these settings to define the gap between image and job ticket.

- Font size

You can specify any font size for job ticket text. The default font size is 6 pt when adding a job ticket per page, and 12 pt when adding a job ticket per nesting.

- **Finishing tab > Crop Marks pane**

Activate the check box to enable the settings on this pane.

Select where you want to print crop marks:

- Page Marks

Prints crop marks for each page (document) on a sheet.

- Sheet Marks

Prints crop marks for the size of the media loaded in the printer.

- Tile Marks

Prints crop marks around each tile.

- Type

From the drop-down list, select the type of crop marks to be printed.

Choose between Standard, Corner, Frame, Tombo, or FOTOBA (DIGITRIM, XL, WR) crop marks.

Some of the following settings are not available for certain types of crop marks.

- Color

Click the colored square to choose the color of the crop marks.

- Line thickness

Use the edit box to define the thickness of the crop marks.

- Distance to job

Use the edit box to define the distance between image and crop marks.

- Length

Use the edit box to define the length of the crop marks.

- Bleed

This setting repositions the crop marks in relation to the image.

- Cut image

Select this radio button to crop each edge of your image by a defined margin width, e.g. to eliminate unwanted paper white around an image or to reduce the size of an image.

Bleed: cut image



- Add frame

Select this radio button to add white space between image and crop marks.

Bleed: add frame



Bleed is not available for FOTOBA crop marks.

The setting “Distance to job” is also taken into account when you apply this setting, e.g. if you set crop marks at a distance of 1 cm to the job and add a 1 cm frame in the bleed setting, the crop marks will be positioned 2 cm from the image.

- **Output tab > Print Settings pane**

On this pane, you can define basic print settings.

- Print all pages/Print page or sheet

Select whether to print the whole job or only certain pages/sheets.

- Copies

Type the number of copies you wish to print, and whether you want this number of copies for All, Even or Odd pages.

If you are printing three copies of a three-page document, the pages will be output in the following order: 1, 1, 1, 2, 2, 2, 3, 3, 3.

If you prefer to output sorted copies, select the “Sort copies” check box. In this case, the pages of your document will be output as follows: 1, 2, 3, 1, 2, 3, 1, 2, 3.

You can also reverse the output order.

- **Output tab > Advanced Print Options pane**

- Separations

Select an option from the drop-down list to determine how separated files will be output.

- Merge separations

Select this setting to combine all color separations and output as one printout.

- Color separations

Select this setting to output one printout for each color separation.

- Grayed separations

Select this setting to output one grayscale printout for each color separation.

- Invert colors

Select this check box to print an inverted image (color negative) of your print jobs.

- Dynamic smoothing

- Smooth out gradations and compression artefacts

Use this setting to smooth out uneven color gradations in inkjet production printing. Uneven color gradations can appear in light areas of low contrast as banding or as visible blocks of solid color. They are often caused by extreme image compression.

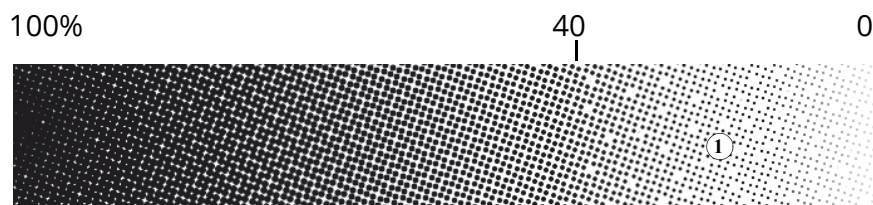
- Simulate final run characteristics

These settings enable you to simulate print characteristics commonly found in different printing methods. You can choose between:

- Show missing dots up to

Show missing dots up to

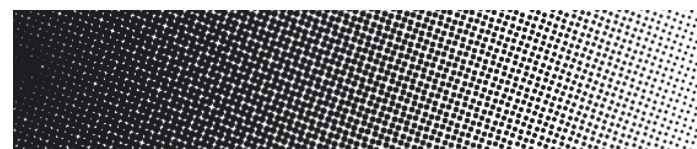
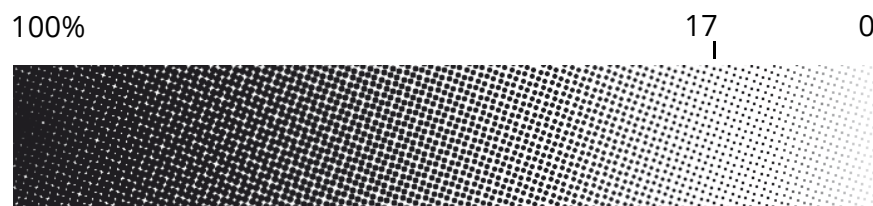
1 Missing dots



This setting simulates the effect that occurs in gravure printing when ink is not evenly transferred from the cylinder. Use the slider to define the percent area coverage of missing dots.

- Define first printable dot up to

Example of an original halftone screen and a halftone screen with a first printable dot setting of 17%



This setting simulates offset printing and enables you to define where the first printable dot will start. Use the slider to define the percent area coverage for the first printable dot.

- Add noise up to

Result of noise smoothing



This setting produces an image which more closely resembles output on a printing press. It creates a less smooth effect than an inkjet printout. Use the slider bar to define the amount of noise smoothing.

4.3.3 Output device settings

The output device settings are available when you select an output device in the layout area.

- **Device tab > Information pane**

- Name

Type a name for a new output device or change the name of an already defined output device. It is not possible to change the name of the linearization device.

- Description

Type a brief description, if required.

- Manufacturer

Select the manufacturer of your output device.

- Device type

Select your printer model from the drop-down list.



Profiles are provided with your software and saved to the Profiles folder. If no profiles are located in this folder, an error message to this effect will be displayed when you select a device type and you will not be able to set up your printer.

- **Device tab > Connection pane**

- Connection type

- Print via IP network

Select this option to print to a network printer.

Type the IP address of the network printer in the edit box. The printer's TCP/IP address may be a defined name or a series of numbers, e.g. 10.1.149.33. Ask your system administrator if you are not sure of your printer's TCP/IP address.

Click Test to check that a connection to the printer has been properly established. To test the connection, the printer must be switched on. If you receive an error message, consult your system administrator for advice.

Used TCP/IP protocol is: Select the type of TCP/IP protocol that your printer uses for data transfer.

Select "RAW on port" if your printer supports RAW printing. Most printers support RAW printing to port 9100. However, please note that this setting depends on the network settings made at the printer and may, therefore, be different.

Select "LPR queue" if your printer supports LPR printing. Then type the queue name in the edit box. It is normally only necessary to type a queue name if you are printing via a Unix system or a print server with multiple interfaces. Therefore, in most cases, you can leave this edit box blank. Please refer to your printer manual for further information.

- Print via port

Select this option and choose the name of your printer from the drop-down list to print to a printer that is connected via USB to the Server computer. The printer must be switched on when you start Esko Proof. Otherwise, it will not be automatically detected.

- **Media tab > Print Configuration pane**

- Ink type

Select the type of ink that is inserted in your printer.

- Media name

Select the name of the media you will be printing on.

If you select a media type that is patched to a Device Link profile, Esko Proof will indicate this.

A Device Link profile represents a fixed combination of printer and media type.

Device Link profiles must be saved to the folder where the media profiles are saved. Otherwise they cannot be detected in Esko Proof.

- Calibration set

This area displays the epl base linearization which is patched to the selected media type. If more than one epl is available, you can select which one you want to use from the drop-down list.

By clicking "Catalog" you can display a list of all the epl files available for the selected media name and view the printer conditions under which they were created.

Click "New Linearization and Profile..." to open Esko LinTool if you want to create a new base linearization.



The current printer settings are automatically transferred to the linearization device. In other words, the default or previously made settings of the linearization device will be overwritten.

- Visual correction

If you have created a visual correction file, you can select it here.

- **Media tab > Media Setting pane**

- Media size correction

This feature lets you correct any inconsistency in the length of the printed image. This may occur as a result of the particular combination of printer and media that you are using.

Normally, job length and printed image length are the same. However, if you discover that your printed image is longer or shorter than it should be, you can adjust the output length.

The file Lineal_01.ps is provided in the Samples folder for this purpose. The printed image displays a set of ruler markings 0.5 m x 0.5 m. Print out the file and measure the length of the ruler markings. If the measurement is not accurate, you can compensate for the difference by typing the target length and the actual measured length in the appropriate edit boxes.

This setting is independent of the hardware setting available at the control panel of some printers.

- Media size

- Source

Select the type of media feed, e.g. roll or single sheet. This setting is printer-dependent and varies according to the types of media feed and number of media trays installed for your particular printer.

- Format

Select the size of the media inserted in the printer from the drop-down list.

If your media size is not listed, you can define a custom format. Type the desired Width and Height in the edit boxes and click Save. A dialog opens to let you define a name. When you close the dialog, your custom format is automatically selected.

Esko Proof uses the default system of measurement set up in the operating system — centimeters, millimeters or inches. However, you may change this setting if you wish.

To delete a custom media format, select it and click Delete. It is not possible to delete default media formats.

See also:

“Edit menu” on page 30

- **Special tab > Special Printer Settings pane**

This pane provides printer-specific settings. Please refer to your printer documentation if you require further information.



The settings that you make in Esko Proof override the settings of the same name that are made at the printer.

For example, you may have the following settings:

- Autocut feature
- Media suction
- Printer dryer function
- Dry time definition
- Borderless printing

To achieve borderless printing you must also select the page layout setting “Fit to page size”.

- Measurement settings for verification (ILS30)

Select the measurement condition to use when measuring verification strips with your ILS30 inline spectrophotometer:

- M0

The UV content of the specimen illumination is not defined. Measuring occurs in one step.

- M1

The UV content of the specimen illumination is defined as D50. Measuring occurs in two steps.

- M2

Requires that the spectral power distribution of the specimen illumination is in the wavelength range of 420 nm to 700 nm, with no substantial radiation power in wavelengths below 400 nm. Corresponds to UV cut. Measuring occurs in two steps.

Chapter 5: Managing system workflows

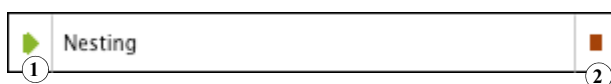
5.1 Making changes to system workflows

A fully online system workflow is indicated by green arrows from user through to output device. A red rectangle indicates that the workflow has been interrupted at a certain stage.

To stop a workflow, click on a green arrow in the workflow system. The green arrow changes into a red rectangle to indicate that the workflow has been interrupted.

Setting system workflows online/offline

- 1 Online
- 2 Offline



Occasionally, you may want to make alterations to an existing system workflow, e.g.:

- To add or delete a user
- To change workflow settings
- To connect to a different printer or service an output device

In order to make changes to a system workflow, you must first stop the workflow at the appropriate stage of job processing to prevent jobs from entering a workflow that is temporarily unavailable.

You can stop a system workflow:

- at the user (to prevent a user logging on)
- at workflow entry (to prevent automatic job detection, i.e. hotfolders are no longer monitored)
- at workflow exit (to prevent jobs from being processed by Esko Proof. Stopping the workflow at this stage is the equivalent of loading an on-hold job)
- at the output device (to prevent jobs from being printed)

5.1.1 Available menu commands

Context menus are available for users, workflows and output devices which make it easy to manage your system workflows.

- **User settings**

- Connected Workflows

Choose this command and choose a workflow from the submenu to connect the user to a specific workflow.

- User is online/offline

This command shows whether a selected user is logged on to Esko Proof. In addition, you can use this command to connect or disconnect a user from his workflows.

- Connect to All Workflows

Choose this command to connect the user to all available workflows.

- Disconnect from All Workflows

Choose this command to disconnect the user from all workflows.

- New User

Choose this command to add a new user.

- Delete User

Choose this command to delete the user.

- Color Indicator

Choose this command to assign a color to the user.



- **Workflow settings**

- Connected Users

Choose a user from the submenu to connect him to the workflow.

- Connected Output Device

Choose an output device from the submenu to connect the workflow to a specific output device. Each workflow can only be connected to one output device.

- Workflow Accepts New Jobs

Choose this command to switch the workflow online so that jobs can be received from users. If a workflow is already online to users, this is indicated by a check mark.

- Workflow Processes and Prints Jobs

Choose this command to switch the workflow online/offline to the output device. If a workflow is online to an output device, this is indicated by a check mark. In an offline status, jobs are processed but not submitted to the output device.

- Connect All Users to Workflow

Choose this command to connect all users to the workflow.

- Disconnect All Users from Workflow

Choose this command to disconnect all users from the workflow.

- Disconnect Output Device

Choose this command to disconnect the output device from the workflow.

- Save as Environment

An environment is a combination of workflow and printer. Choose this command to create a backup copy of your workflow and printer settings.

- New Workflow

Choose this command to select a workflow template and create a new workflow.

- Delete Workflow

Choose this command to delete the workflow. The workflow must be completely offline.

- Color Indicator

Choose this command to assign a color to the workflow.

- **Output device settings**

- Connected Workflows

Choose a workflow from the submenu to connect it to the output device.

- Device is Online

Choose this command to switch the output device online/offline. The output device must be online to output print jobs.

- **Connect Output Device to All Workflows**
Choose this command to connect all available workflows to the output device.
- **Disconnect Output Device from All Workflows**
Choose this command to disconnect all workflows from the output device.
- **New Output Device**
Choose this command to add a new output device.
- **Delete Output Device**
Choose this command to delete the output device. The output device must first be disconnected from all workflows.
- **Color Indicator**
Choose this command to assign a color to the output device.

See also:

“Special tab > Special Printer Settings pane” on page 67

5.2 Saving and restoring settings

Setting up workflows for your exact needs can be quite time-consuming. For this reason, Esko Proof offers you the opportunity to save settings in a backup file.

In Esko Proof, there are two types of backups: system configuration and environment settings.

- System configuration

This is useful if you need to reinstall the software at any time. It saves:

- All user settings
- All workflow settings, including selected presets, linearization files and spot color tables, but no profiles.
- All printer setups

- Environment settings

This is useful if you output repeat jobs at regular intervals and need to be sure that you use exactly the same settings each time. Environment backups also enable you to provide customers with exact workflow/printer information.

An environment saves:

- All workflow settings, including selected profiles, presets, linearization files and spot color tables
- The printer setup, excluding the port configuration

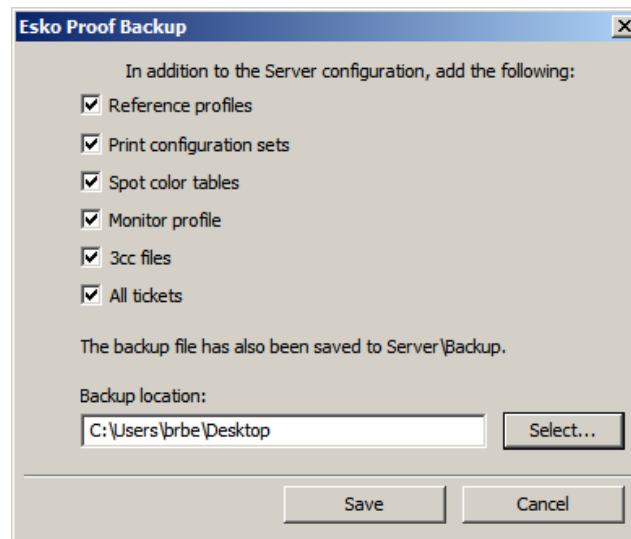
You can save an environment for:

- a workflow selected in System Manager
- a job selected in Job Explorer

TO SAVE SYSTEM CONFIGURATION SETTINGS

1 From the File menu in System Manager, choose Backup.

The Esko Proof Backup dialog opens.

**Esko Proof Backup
Dialog****2 Select the check boxes of the items you wish to back up.**

All system configuration settings are automatically saved by default.

3 Define a backup location.

System configuration files are saved to two locations: the default Backup folder, and a freely definable destination, e.g. desktop. To define a different destination, click Select and browse to the required location.

4 Click Save.

A window opens when the backup has been successfully completed.

5 Click OK to complete the backup procedure.

TO RESTORE A SYSTEM CONFIGURATION**1 From the File menu in System Manager, choose Restore.**

The Backup window opens to display the backup files located in the Backup folder.



If you restore a system configuration after deleting and reinstalling Esko Proof, this folder is empty. In this case, click Choose and browse to the location of the second backup file. Unless defined otherwise during the backup procedure, you will find the second file on the desktop of your computer.

2 Select the backup file to be restored.

3 Click OK.

A window opens when the restore has been successfully completed.

4 Click OK.

You need to restart the Server to view your restored system configuration.

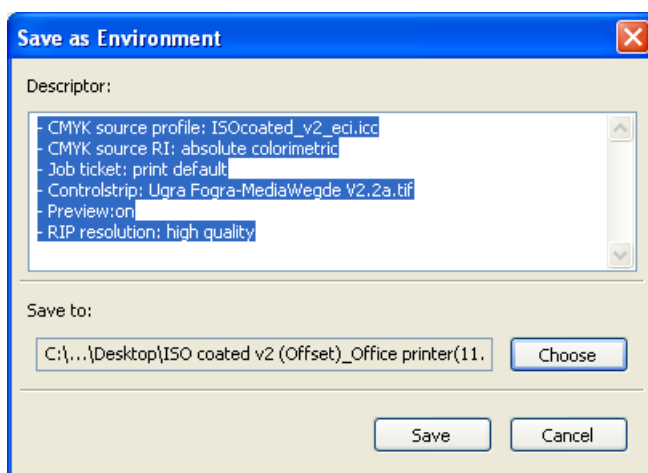
TO SAVE AN ENVIRONMENT

1 Save a workflow or job environment by:

- Choosing File > Save as Environment
- In System Manager, right-clicking on a workflow in the layout area and choosing Save as Environment from the context menu, or
- In Job Explorer, right-clicking on a job in the job list and choosing Save as Environment from the context menu

The dialog Save as Environment opens. If you are saving a workflow environment, the workflow settings are displayed. For a job environment, the edit box is empty to enable you to type your own job information.

Dialog Save as Environment



2 Define a backup location.

Environment backup files are saved to two locations: the default Environments folder, and a freely definable destination, e.g. desktop. To define a different destination, click Choose and browse to the required location.

3 Click Save.

Environment names are assigned automatically by Esko Proof. Job environments are made up of the file name and the output device. Workflow environments indicate the workflow name, the output device and the creation date.

If an environment name already exists, you are asked whether you want to overwrite the original file with the new settings.

A window opens when the backup has been successfully completed. Environments files have the file extension *.xfe.

4 Click OK to complete the backup procedure.

TO RESTORE AN ENVIRONMENT

Environments can only be restored in System Manager.

1 Import an environment by:

- Right-clicking on an empty part of the layout area and choosing Import Environment from the context menu, or
- Choosing File > Import Environment

The Import Environment window opens to display the backup files located in the Environments folder.

If this folder is empty, click Choose and browse to the location of the second backup file.

2 Select the backup file to be restored.**3 To allow saved files and profiles of the same name to be overwritten, select the check box "Allow overwriting".**

If you leave this check box unchecked, only files with unique names are restored.

4 Click OK to restore the environment.

The Esko Proof Information window opens when the restore has been successfully completed.

5 Click OK.

The restored environment can be seen in System Manager.

- If an appropriate output option license is available, workflow and output device are restored and connected. However, the printer port setting is reset to its default value, so you must set up a connection before you can print.

- If an insufficient number of appropriate output option licenses is available, workflow and output device are restored, but not connected.
- If no appropriate output option license is available, the workflow is restored, but not the output device.

Chapter 6: Settings in Job Explorer

6.1 Menus

6.1.1 File Menu

- Import Job
Choose this command to load a job.
- New Nesting
Choose this command to create a nesting of one or more loaded jobs.

By clicking “All Jobs” at the bottom of the Selector, you can create nestings from jobs loaded in different workflows.
- Save
Choose this command to apply changes you have made to a job. If you do not choose this command, your job settings will not be saved and the job will be processed using the previous settings.
- Save as Environment
An environment is a combination of workflow and printer. Choose this command to create a backup copy of your workflow and printer settings.
- Print
Choose this command to save the current settings and start printing.
- Cancel
Choose this command to cancel processing.
- Login
Choose this command to display the “Login” dialog. This command enables you to log in under a different user name or to log on to a different Server.
- Logoff and Exit
Choose this command to log off and exit the Esko Proof Client. The next time you start Esko Proof the “Login” dialog opens.

- Exit

Choose this command to exit Esko Proof. The next time you start Esko Proof you will automatically be logged on with the same user data.

In the Macintosh version of the software, you will find the command in the Esko Proof menu.

6.1.2 Edit menu

Most commands in this menu are also available if you right-click on an image in the preview window.

- Select

Choose the command "All" to select all the pages of a nesting. Choose "Page Below"/"Page Above" to select the page that was inserted into the nesting immediately before/after the currently selected page. "None" deselects all selected pages.

- Cut

Choose this command to remove a selected page from a nesting. The page is saved to the clipboard and can be reinserted using the command "Paste".

- Copy

Choose this command to copy a selected page from a nesting. The page is saved to the clipboard and can be copied as many times as required using the command "Paste".

- Paste

Choose this command to insert a page that you have previously copied or removed from a nesting using the command "Copy" or "Cut".

- Delete

Choose this command to delete a job, including nested pages. You can also use this command to delete individual copies of an image. However, if you delete the original image, all copies will be deleted.

- Print & Cut

Choose this command to send the selected job to your print and cut device (that prints the job and cuts the contour data).

- Preview

Choose this command to save the current settings, including those not displayed on the fly, and force a preview of an image. This is useful for workflows for which the setting “Create preview before RIPing” is not activated by default.

- Placed

Choose this command to place or remove a page in a nesting (and the nesting preview). By selecting the nesting file, you can place or remove all files in the nesting at once.

- Locked

Choose this command to set a nested page at its current settings and position on the sheet. A locked page cannot be modified, nor can it be rearranged on the sheet.

- Remove from Nesting

Choose this command to remove a job from a nesting. A separate job is created in the job list of the same workflow.

- Order

Choose this command to alter the order of overlapping pages in a nesting. You can move a selected page to the front or back of the stack or move it up or down a level. This function can also be performed on multiple file selections.

To select multiple pages, hold down the <Shift> key.

- Align

Choose this command to define an alignment for selected pages in a nesting. Pages can be aligned according to their upper, lower, left or right edges or according to their vertical or horizontal centers.

To select multiple pages in the preview simultaneously, hold down the <Shift> key. to select multiple pages in the job list, use the <Ctrl> key

Randomly positioned images



Aligned upper edges ...



- Distribute

Choose this command to distribute selected pages on a nesting. Pages are rearranged evenly on the sheet so that their center points are equidistant from each other. You can distribute pages according to their upper, lower, left or right edges or according to their vertical or horizontal centers. This feature is primarily intended for use in conjunction with the align feature.

To select multiple pages simultaneously, hold down the <Shift> key.

... and horizontal
centers distributed



- Scale

Choose this command to enlarge or reduce the size of an image.

- No Scaling

This setting returns a previously scaled image to its default size.

- Percentual

Select a scale factor from the submenu.

The applied scale factor is indicated by a check mark next to the appropriate setting.

You can also scale an image by selecting it in the preview window and dragging the mouse or using the transform tools.

- Fit to

Choose "Page", "Sheet Width" or "Sheet Height" from the submenu.

Scaling to page size will enlarge the image to either the width or the height of the media. The image keeps its original proportions and scaling does not exceed the sheet format, i.e. no cropping takes place.

Scaling to sheet width or sheet height will scale the image to the width or height of the sheet respectively.



Be careful when scaling to sheet height or fitting to sheet if you are printing on a roll substrate. Esko Proof calculates the image length based on a new roll of substrate (usually 15 m).

- Scale Proportionally

Choosing this command enables you to scale the width and height of an image proportionally. Select an image by one of the corner handles and drag the mouse until the required image size is reached.

- Rotate

- Rotate 0, 90, 180 or 270 degrees

Choose this command to rotate an image by the selected angle.

You can also rotate a selected image by moving the cursor next to (but not directly onto) one of the handles. The cursor form changes, enabling you to rotate the image as required. When you release the cursor, the image will automatically snap to the nearest 90 degree angle of rotation. Alternatively, you can use the transform tools.

- Flip Horizontally

Select this command to create a mirror image by flipping a selected image on its vertical axis.

You can also flip an image using the transform tools.

- Flip Vertically

Select this command to create a mirror image by flipping a selected image on its horizontal axis.

You can also flip an image using the transform tools.

- Reset Page

If you are not satisfied with your job changes, you can use this command to return the page to its original state.

- Clone

Use this command to clone a page of your nesting.

After clicking Clone, the Clone Image dialog box appears. Enter the number of clones you want to create, and click Clone It! (creating a single clone is similar to copying and pasting the original page).

The cloned pages are placed in the nesting, but are not automatically arranged. You can apply individual job settings to each clone. However, if you delete the original, all the clones are also deleted.

- Remove Clone

Use this command to delete a cloned page.

- Languages (Windows only)

Choose this command to change the language in which the user interface is displayed. You must restart the Esko Proof Client before the new language takes effect. By default, the language of the operating system is displayed.

On a Macintosh, you can change the language via the international settings in "System Preferences".



To display one of the supported Asian languages on a PC, Esko Proof must be running on an operating system that supports 2-byte fonts.

- Measurement System

Choose this command to define which system of measurement is used in Esko Proof. The default setting corresponds with the system of measurement set up in the operating system. However, you can choose between millimeter, centimeter, meter, inch and foot.

- Monitor Profile

Esko Proof provides you with the opportunity to verify color accuracy on a computer screen. This is known as "soft proofing". However, much like the color output of each printer can vary greatly, so each monitor displays color slightly differently. To overcome this problem, it is important that the monitor is regularly calibrated to a certain standard. Monitor calibration consists of two steps:

- adjusting the brightness and control settings on the monitor itself to set values and
- creating a monitor profile, which defines the white point, gamma and RGB phosphor settings

Windows and Macintosh computers provide standard monitor profiles as part of the operating system software. In Esko Proof you can select a monitor profile that you have created yourself or one provided with the operating system.

- Copy to Workflow

Choose this command to copy a job from one workflow to another.

- Move to Workflow

Choose this command to transfer a job from one workflow to another.

- Copy to Printer

Choose this command to copy a job from one workflow to another.

- Move to Printer

Choose this command to transfer a job from one output device to another.

See also:

“Transform tools” on page 89

“Keyboard shortcuts” on page 93

6.1.3 Nesting menu

The commands in this menu are also available if you right-click anywhere outside a nested job in the preview window.

- New Sheet

Choose this command to add a new sheet to an existing nesting. A sheet is the physical size of the media you have defined either for the printer (Output Device > Media) or as a sheet (Layout > Sheet).

- Delete Sheet

Choose this command to delete a sheet from a nesting. To delete the final sheet, use the Edit > Delete command.

- Go to

Choose this command to scroll through a multi-sheet nesting. You can scroll backward and forward through individual sheets or proceed directly to the first or last sheet of a nesting.

- Apply

Choose this command to rearrange the pages of a nesting after you have made changes. This command corresponds to the button of the same name found on the “Nesting” pane of the “Layout” tab in the Property Inspector.

6.1.4 Tools menu

- Esko Verification
Choose this command to start Esko Verification (if you have a license for it), a tool to verify your printer's color accuracy.
- System Manager (users with administrative rights only)
Choose this command to switch to System Manager.
- System Information
Choose this command to display information about the resources used and the jobs processed by the Esko Proof Server.

6.1.5 View menu

- Zoom in
Choose this command to enlarge the size of the preview.
- Zoom out
Choose this command to reduce the size of the preview.
- Fit to
Choose this command to modify the preview view.
 - Window
This setting scales the sheet so that it is completely visible in the preview window.
 - Selection
This setting scales a selected image or page to the size of the preview window.
 - Width
This setting scales the sheet so that its whole width fits in the preview window.
 - Height
This setting scales the sheet so that its whole height fits in the preview window.
 - Actual Size
This setting scales the sheet and all inserted pages to their actual size.

- Clear Guides

Guides appear as non-printing lines and help you to layout pages on your nesting sheet. Choose this command to delete guides that you have previously placed.

You can also delete a guide by dragging it to the ruler. Drag horizontal guides to the horizontal ruler and vertical guides to the vertical ruler.

To place a guide, you must first display the rulers. From the "View" menu, choose "Visual aids" and select "Rulers" from the submenu.

To create a horizontal guide, hold down the mouse button on the horizontal ruler and drag to the desired position on the sheet. To create a vertical guide, drag from the vertical ruler. Please note that guides are not saved. When you exit Esko Proof, all guides are automatically deleted.

To move a guide, move the cursor over the guide until the x or y coordinate appears. Then, hold down the mouse button and drag the guide to a new position. Please note that it is not possible to move locked guides.

- Lock Guides

Choose this command to lock guides in a fixed position.

- Snap to

Choose this command to ensure precise image alignment. When this command is activated, guides, grid or objects receive a magnetic property which causes images in their proximity to snap to them.

When "snap to objects" is selected, the setting for "Spacing between nesting elements" is observed.

- Visual Aids

This command contains a number of sub-commands to help you lay out your nesting.

- Rulers

Choose this command to show or hide the horizontal and vertical rulers. The unit of measurement used is defined on the "Edit" menu.

You can change the zero coordinates (0, 0) by pressing and holding down the left mouse button on the top left of the preview window (where the vertical and horizontal rulers intersect) and dragging the mouse to the required position.

To reset the zero coordinates, double-click on the intersection of the rulers in the top left corner of the preview window.

- Guides

Choose this command to show or hide the guides.

- Grid

The grid is a set of evenly spaced non-printing horizontal and vertical lines that helps you to layout pages on a sheet. Choose this command to show or hide the grid. The grid spacing is fixed, but adapts automatically according to the selected zoom factor.

- Tiles

Choose this command to show or hide the tiles on the image.

- Marks

Choose this command to show or hide applied crop marks.

- Page Frame

Choose this command to draw a black frame around each page on the sheet. You may find this useful to see the page borders, e.g. to check if an object on a page has a lot of white space around it which may be overlapping other images.

- Overlaps

Choose this command to check if pages are overlapping. Overlapping pages are indicated by a red frame.

- Sheet Margins

Choose this command to display the non-printable margins as defined by the printer's firmware.

- All

Choose this command to select all the visual aids on this menu in one step.

- None

Choose this command to deselect all the visual aids on this menu in one step.

- Maximize Preview

Choose this command to display an enlarged view of the preview window. Choose it again to revert to the default Job Explorer window.

- Show Job Content Only

Choose this command to fit the preview on the job image.

6.1.6 Workspace menu

- Property Tabs

This displays the tabs available in the right pane. To hide a tab, click an item that has a check mark next to it.

To show a hidden tab, click an item that does not have a check mark next to it. To show all hidden tabs, click All.

6.1.7 Help menu

- Help

Choose this command to start the online Help for Esko Proof.

- About

Choose this command to open a window with details of your program version.

In the Macintosh version of the software, you will find the command in the Esko Proof menu.

6.2 Context menus

Job Explorer has a number of context menus which provide shortcuts to some of the most commonly used menu commands from the “Edit” and “Nesting” menus.

Context menus become available when you right-click on:

- an image in the preview window
- any area outside an image in the preview window
- any object in the job list

When right-clicking an object in the job list, the following additional commands are available:

Add Job to Nesting	Choose this command to add a new job to an existing nesting.
Thumbnail Size	The job list can display thumbnail images of all loaded jobs for easy recognition of content. Make sure that the Thumbnail column is displayed in the job list (if it isn't, right-click a column heading and select Thumbnail). You can choose to use Small, Medium or Large thumbnails.
Delete	Choose this command to delete a selected item.
Normal Priority	Choose this command to set a high-priority job to normal. In this case, the job will be output in the order in which it was received in the job list.
High Priority	Choose this command to send a selected job to the front of the print queue, i.e. if more than one job is printing to the same workflow, a high-priority job will be output before jobs with a lower priority. However, jobs already being processed will be completed first.
Hide/Show Property Inspector	Choose this command to show/hide the Property Inspector. This command has a toggle effect.
Rename	Choose this command to rename nesting, step & repeat or JDF jobs.

See also:

“Edit menu” on page 75

“Nesting menu” on page 82

6.3 Toolbars

6.3.1 First toolbar



Import Job

Click this button to load a job.



Create Nesting

Click this button to create a nesting of one or more loaded jobs.



Save

Click this button to save the current settings.



Print

Click this button to start printing.



Print & Cut

Click this button to send the selected job to your print and cut device (that prints the job and cuts the contour data).



Cancel Printing

Click this button to cancel printing.



Delete Job

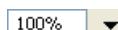
Click this button to delete the selected job from the job list.



Esko Verification:

Click this button to start Esko Verification (if you have a license for it) — a tool for verifying the colors on your proof.

6.3.2 Second toolbar



Zoom Factor:

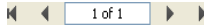
Click the arrow button to increase or reduce the size of the previewed image and select a zoom factor from the drop-down list. You can also choose to display a preview that equals the size of the preview window, the size of the selected area or the width, height, or actual size of the image. Alternatively, type a scale factor in the edit box.

See also:

“Fit to” on page 83

**Zoom:**

Click this button to zoom in on the preview. Select the tool and click inside the preview window. To deselect the zoom function, click the transform job icon in the first toolbar.

**Scroll buttons:**

These buttons enable you to scroll forwards and backwards through a multi-page document or a multi-page nesting.

**Order:**

Click the arrow to the right of this button to alter the order of overlapping pages in a nesting. You can move a selected page to the front or back of the stack or move it up or down a level. This function can also be performed on multiple page selections. To select multiple pages simultaneously, hold down the <Shift> key.

**Align:**

Click the arrow to the right of this button to define an alignment for selected pages in a nesting. Pages can be aligned according to their upper, lower, left or right edges or according to their vertical or horizontal centers. To select multiple pages simultaneously, hold down the <Shift> key.

**Transform Job**

Click this button to display the transform tools.

**Crop Job**

Click this button to display the crop tools.



The remaining buttons on this toolbar vary according to whether the transform tool or the crop tool is selected.

- **Transform tools**

If the transform tool is selected, the following buttons become available on the second toolbar:

**Position Image**

Use these edit boxes to position an image at precise coordinates. The defined coordinates refer to the top left corner of an image. If multiple pages are selected, the relative position of the pages to each other remains constant.

**Width and height**

Use these edit boxes to modify the width or height of an image. Enter the values using the system of measurement defined on the Edit menu. Press <Enter> or <Tab> for the change to take effect. If multiple images are selected, the scaling is applied to the image that is nearest to the top left corner of the sheet. All other images are scaled in proportion.

To enter a scaling factor as a percentage, click the button "Scale percentually".



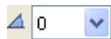
Scale Percentually:

If you click this button, you can type in a scaling factor for width and height as a percentage.



Scale Proportionally:

Click this button to ensure that the width and height of your images are scaled proportionally. If you modify the width of an image, the height will automatically change to maintain the original proportions.



Rotation Angle:

Select an angle of rotation from the drop-down list. Angles of 0, 90, 180 and 270 degrees are possible.



Flip Horizontally:

Click this button to create a mirror image by flipping a selected image on its vertical axis.



Flip Vertically:

Click this button to create a mirror image by flipping a selected image on its horizontal axis.



Reset Transformations:

Click this button to return an image to its original untransformed state.



Lock:

Click this button to fit a nested page at its current setting and position on the sheet. A locked page cannot be modified, nor can it be rearranged on the sheet.

• Crop tools

The crop tools enable you to define and output a specific area of an image, without printing the whole image.

If the crop tool is selected, the following buttons become available on the second toolbar:



Define cropped image size

The edit boxes show the current image size. If you type in new dimensions, the image is cropped along the bottom and right edges.



Define cropped margin width:

Use these edit boxes to crop the top, bottom, left or right margins of an image.



Reset:

Click this button to return an image to its original uncropped state.

6.4 Property Inspector

The Property Inspector of Job Explorer displays the settings made for the workflow in System Manager. In addition, some job-specific settings are possible which override the corresponding workflow settings for that particular job.

Many of the settings are identical to the settings that have previously been defined for the workflow. Therefore, this section describes only the differences.

6.4.1 File tab > Source File Information pane

The Source File Information pane displays job-specific information, such as the name of the selected file, together with details of the date the file was created and by whom.

It also contains information about the size of the original file (in centimeters or inches and dpi) and states whether the image file is composite or in-RIP separated.

It also shows which device the job was or will be printed on, and nesting information if applicable.

6.4.2 File tab > Warning and Error pane

Esko Proof displays warning messages, for example to let you know if a page will be cropped during printing.

If an error occurs during job processing, a message displays the cause of the problem.

6.4.3 File tab > Subfiles pane

In the case of multiple file jobs, the names of the individual files which make up the job are listed.

6.4.4 File tab > Job Merge pane

You can use this pane to merge jobs manually.

1. In the job list, click the job that will be the master (background) job.
2. Select the check box at the top of the Job Merge pane, then select Master job and save your changes.
3. In the job list, click the (content) job that will be superimposed on the master job.
4. Select the check box at the top of the Job Merge pane, then select Content job. In the Assign master job list, select your master job, and save your changes.

6.4.5 File tab > PS/EPS/PDF pane

The PS/EPS/PDF pane displays job information specific to a loaded PS/EPS/PDF file. If a job in any other file format is loaded, this pane is not visible.

6.4.6 Layout tab > Virtual Sheet Size pane

The settings on this pane are identical to the settings of the same name available in System Manager.

See also:

“Layout tab > Virtual Sheet Size pane” on page 49

6.4.7 Layout tab > Layout Options pane

The settings on this pane are identical to the settings of the same name available in System Manager.

See also:

“Layout tab > Layout Options pane” on page 49

6.4.8 Layout tab > Nesting pane

This tab enables users with no administrator rights to define basic settings which affect media consumption, such as rotation and spacing between nesting objects.

All the settings made to nested pages on this tab must be “confirmed” by clicking Apply. In addition to rearranging the pages in accordance with the new settings, the Apply button also saves your changes.

See also:

“Layout tab > Nesting pane” on page 53

6.4.9 Layout tab > Step & Repeat pane

This pane enables you to create a manual step & repeat.

You must click Apply for the settings to take effect.

Step & repeat jobs receive the name “StepAndRepeat”, followed by a consecutive number, e.g. StepAndRepeat_66. You can rename step & repeat jobs by selecting the job and choosing Rename from the context menu.

Only original images can be selected and edited. Therefore, make sure that your image is scaled to the required size, etc. before performing step and repeat.

After stepping and repeating, the original image is marked with a lock icon to indicate that the image can no longer be edited.

“Layout tab > Step and Repeat pane” on page 55

6.4.10 Layout tab > Job Ticket pane

The settings on this pane are identical to the settings of the same name that are available in System Manager.

See also:

“Layout tab > Job Ticket pane” on page 56

6.4.11 Finishing tab > Crop Marks pane

The settings on this pane enable you to choose job-specific crop marks. The settings are identical to the settings in System Manager.

See also:

“Finishing tab > Crop Marks pane” on page 59

6.4.12 Output tab > Print Settings pane

The same settings are available as in System Manager.

See also:

“Output tab > Print Settings pane” on page 60

6.4.13 Output tab > Media Settings pane

The same settings are available as in System Manager.

See also:

“Media tab > Media Setting pane” on page 66

6.4.14 Output tab > Media Configuration pane

The same settings are available as in System Manager.

This pane also enables you to apply a different media set to a selected job. Media sets are created for a specific combination of settings, e.g. for a particular type of media or for a certain type of ink.

“Media tab > Print Configuration pane” on page 64

6.4.15 Output tab > Advanced Print Options pane

The same settings are available as in System Manager.

See also:

“Output tab > Advanced Print Options pane” on page 61

6.4.16 Output tab > Special Printer Settings pane

The same settings are available as in System Manager.

See also:

“Special tab > Special Printer Settings pane” on page 67

6.4.17 System tab > Device pane

This pane displays the name and type of the connected output device.

For some specific printers (for example, HPZ and Epson x900 printers), Esko Proof supports remote printer monitoring and can retrieve certain information from the printer and display it on this pane. On this pane, you can also check the current printer status.

6.5 Keyboard shortcuts

Key combinations are available in Job Explorer. They mostly correspond to the shortcuts that you are already familiar with from popular graphics programs.

Many of the key combinations that can be applied to individual images can also be applied to multiple job selections on a nesting.

6.5.1 Activating options

Function	Function key
Start Esko Verification	<ul style="list-style-type: none"> • <F3> • <Alt>+<Apple>+<F3>

6.5.2 Activating toolbars

Function	Function key
Transform toolbar	<T>
Crop toolbar	<C>
Edit tiling toolbar	<E>
Zoom toolbar	<Z>

6.5.3 General

Function	Key combination
Switch between Job Explorer and System Manager	<ul style="list-style-type: none"> • <F6> • <Alt>+<Apple>+<F6>
Show system information	<ul style="list-style-type: none"> • <F10> • <Alt>+<Apple>+<F10>
Show context menu for a selected page ("Edit" menu)	Right-mouse click on a page
Show context menu for a selected sheet ("Nesting" menu)	Right-mouse click on a sheet
Show context menu ("View" menu)	<Shift>+right-mouse click on a sheet
Select page	Click on page
Scale page(s) (Crop tool selected)	Click on page handle. Then press <Alt> and drag cursor.
Crop page(s) (Transform tool selected)	Click on page handle. Then press <Alt> and drag cursor.
Rotate page(s)	Click on page edge and drag image. Rotations snap automatically to 90°, 180°, 270° or 360°.

Function	Key combination
Invert	<ul style="list-style-type: none"> • <Ctrl>+<I> • <Apple>+<I>
Reset page	<ul style="list-style-type: none"> • <Ctrl>+<Shift>+<R> • <Apple>+<Shift>+<R>
Maximize preview window	<ul style="list-style-type: none"> • <Ctrl>+<Shift>+<M> • <Apple>+<Shift>+<M>
Next page	<Ctrl>+<Page down>
Previous page	<Ctrl>+<Page up>
Go to first page	<ul style="list-style-type: none"> • <Ctrl>+<Home> • <Apple>+<Alt>+<Page down>
Go to last page	<ul style="list-style-type: none"> • <Ctrl>+<End> • <Apple>+<Alt>+<Page up>
Show/hide crosshairs for more precise page layout	<Tab>

6.5.4 Page position

Function	Key combination
Move page 0.5 mm on sheet	Arrow keys (← ↑ → ↓)
Move page 10 mm on the sheet	<Shift>+arrow keys (← ↑ → ↓)
Move sheet randomly	<Space bar>+drag mouse
Scroll sheet up/down	<ul style="list-style-type: none"> • <Page up>/<Page down> • Scroll wheel up/down
Scroll sheet left/right	<ul style="list-style-type: none"> • <Shift>+<Page up>/<Page down> • <Ctrl>+Scroll wheel up/down
Scroll to top/bottom of sheet	<Home>/<End>
Scroll to left/right edge of sheet	<Shift>+<Home>/<End>

6.5.5 Nesting jobs

Function	Key combination
Select all jobs	<ul style="list-style-type: none"> • <Ctrl>+<A> • <Apple>+<A>
Add page to selection	<Shift>+click on page
Select jobs in a cropped area	Mouse click and drag lasso
Remove page from selection	<Shift>+click on page
Move selected pages	Drag cursor
Remove selected page(s) and copy to clipboard (cut page)	<ul style="list-style-type: none"> • <Ctrl>+<X> • <Apple>+<X>
Delete selected page(s)	<Ctrl>+<Backspace>
Copy selected page(s)	<ul style="list-style-type: none"> • <Ctrl>+<C> • <Apple>+<C>
Paste selected page(s) from the clipboard	<ul style="list-style-type: none"> • <Ctrl>+<V> • <Apple>+<V>
Refresh nesting	<ul style="list-style-type: none"> • <Ctrl>+<Alt>+<R> • <Apple>+<Alt>+<R>
Add sheet	<ul style="list-style-type: none"> • <Ctrl>+<Alt>+<+> • <Apple>+<Alt>+<+>
Lock page	<ul style="list-style-type: none"> • <Ctrl>+<L> • <Apple>+<L>
Unlock page	<ul style="list-style-type: none"> • <Ctrl>+<Alt>+<L> • <Apple>+<Alt>+<L>

6.5.6 Zoom

Function	Key combination
Zoom in/out	<ul style="list-style-type: none"> • <Ctrl>+<+>/<-> • <Apple>+<+>/<-> • <Alt>+Scroll wheel
Fit sheet to window	<ul style="list-style-type: none"> • <Ctrl>+<0> • <Apple>+<0>
Fit to actual size	<ul style="list-style-type: none"> • <Ctrl>+<Alt>+<0> • <Apple>+<Alt>+<0>

Function	Key combination
Fit selection to window	<ul style="list-style-type: none"> • <Ctrl>+<F> • <Apple>+<F>
Fit selection to window and zoom out one step	<ul style="list-style-type: none"> • <Ctrl>+<Alt>+<F> • <Apple>+<Alt>+<F>
Zoom in two steps	<ul style="list-style-type: none"> • <Ctrl>+<Space bar>+mouse click • <Apple>+<Space bar>+mouse click
Zoom out two steps	<ul style="list-style-type: none"> • <Alt>+<Space bar>+mouse click
Zoom into selected area	<ul style="list-style-type: none"> • <Ctrl>+drag lasso • <Apple>+drag lasso

6.5.7 Rulers, guides and grid

Function	Key combination
Show/hide ruler	<ul style="list-style-type: none"> • <Ctrl>+<R> • <Apple>+<R>
Set ruler to new zero coordinates	Drag cursor from top left corner of preview window (where vertical and horizontal rulers intersect)
Return ruler to default zero coordinates	Double-click in top left corner of preview window (where vertical and horizontal rulers intersect)
Create guide	Drag cursor from ruler
Re-position guide	Select and drag guide to new position
Delete guide	Drag guide and release in ruler (unlocked guides only)
Show/hide guides	<ul style="list-style-type: none"> • <Ctrl>+< ; > • <Apple>+< ; >
Lock/unlock guides	<ul style="list-style-type: none"> • <Ctrl>+<Alt>+< ; > • <Apple>+<Alt>+< ; >
Show/hide grid	<ul style="list-style-type: none"> • <Ctrl>+< " > • <Apple>+< " >
Override snap to	<Shift>+drag cursor

Chapter 7: Printing and monitoring print jobs

Esko Proof can process the following formats: PDF, PostScript, EPS, TIFF, and JPEG. Files in all other formats may be loaded but receive the job status “Not supported” and cannot be processed.



If the Esko Proof Server computer has too little available hard disk space, you will not be able to load and process print jobs in Esko Proof. If problems arise, please check the amount of available hard disk space.

7.1 Printing directly from Esko Proof

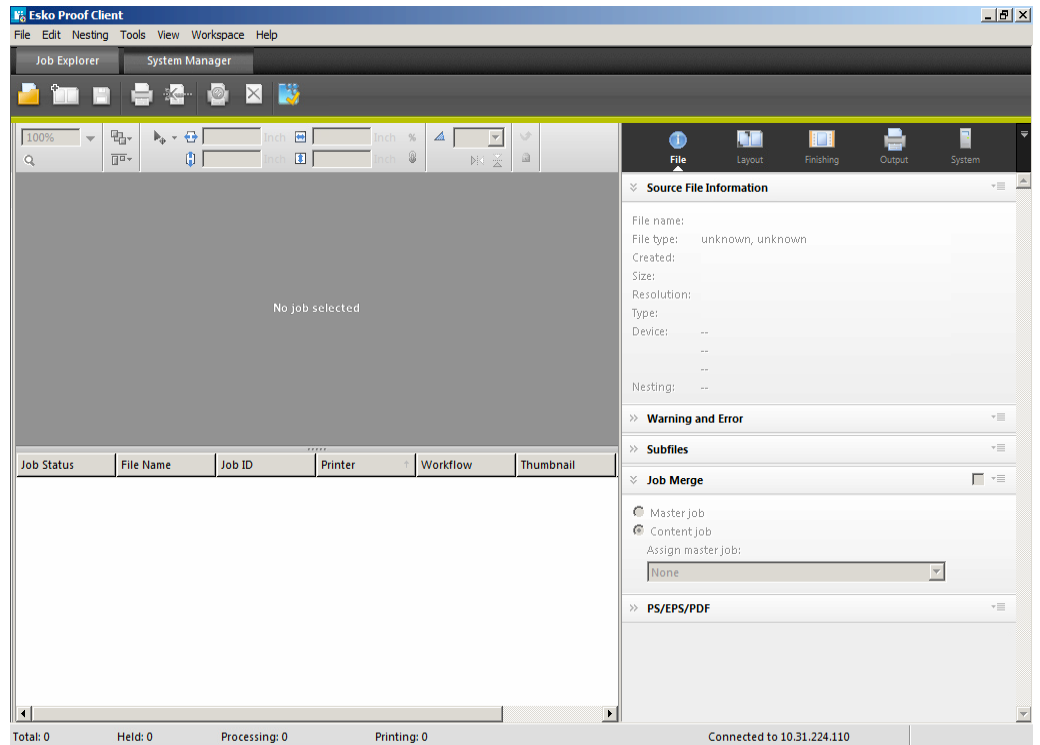
Once a system workflow has been set up, you can print your first job. This section leads you step by step through a practical example of how to obtain your first printout.

TO PRINT DIRECTLY FROM ESKO PROOF

1 Make sure that a media is loaded in the printer.

2 Start Esko Proof and display Job Explorer.

Job Explorer

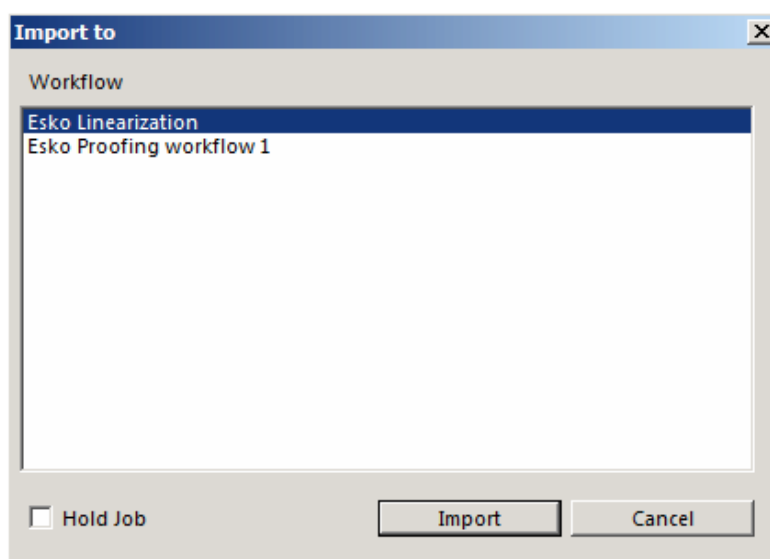


3 Load a job using one of the following methods:

- In the toolbar, click Import Job and browse to your desired file.
- Select File > Import Job and browse to your desired file.
- Right-click the mouse button in the job list, choose Import Job from the context menu and browse to your desired file.
- Use the drag-and-drop function to release a file directly in the job list area.

4 In the Import to dialog, choose a workflow from the list and select the “Hold Job” check box.

Import to dialog



This means that your job is loaded but not automatically processed in Esko Proof. This gives you an opportunity to make job-specific settings before output, if required.

If your job can be processed and output exactly according to the workflow settings, leave the check box “Hold Job” unchecked. In this case, your job will be output as soon as it is loaded in Esko Proof.

5 Click Import. Your job is loaded in Esko Proof.

Alternatively, files can also be copied into a defined hotfolder. In this case, the print jobs are automatically loaded in the assigned workflow.

6 Select your job in the job list.

Depending on the workflow settings, an image preview may or may not be created and displayed.

7 Make any required job-specific settings in the Property Inspector.

Job-specific settings override the workflow settings made in System Manager.

See also:

“Settings in System Manager” on page 28

8 To print your job use one of the following methods:

- In the toolbar, click Print.
- Select File > Print.
- Right-click the mouse button in the job list and choose Print from the context menu.

7.2 Printing via a hotfolder

A hotfolder enables users who do not have Esko Proof installed on their computers to copy print jobs to a centrally located folder on the network.

All jobs placed in the hotfolder are loaded and processed in Esko Proof according to the workflow settings.

Hotfolders are normally set up for one particular workflow. However, it is possible to set up a hotfolder to be monitored by more than one workflow by applying load balancing. In this case, jobs that are placed in the hotfolder are diverted automatically to the first idle workflow that becomes available.



Different workflows printing via the same hotfolder may not necessarily be configured identically. This can result in unsatisfactory results if the workflow settings are different or if a different printer is connected.

See also:

“Enable load balancing” on page 40

TO CREATE A HOTFOLDER

1 Create or choose the folder that will be your hotfolder.



Do not choose a folder that has been mapped as an internal link (shortcut or alias), and do not create a hotfolder on the desktop.



2 If the Esko Proof Server is installed on Windows, please observe the following (and complete steps 3 to 5):

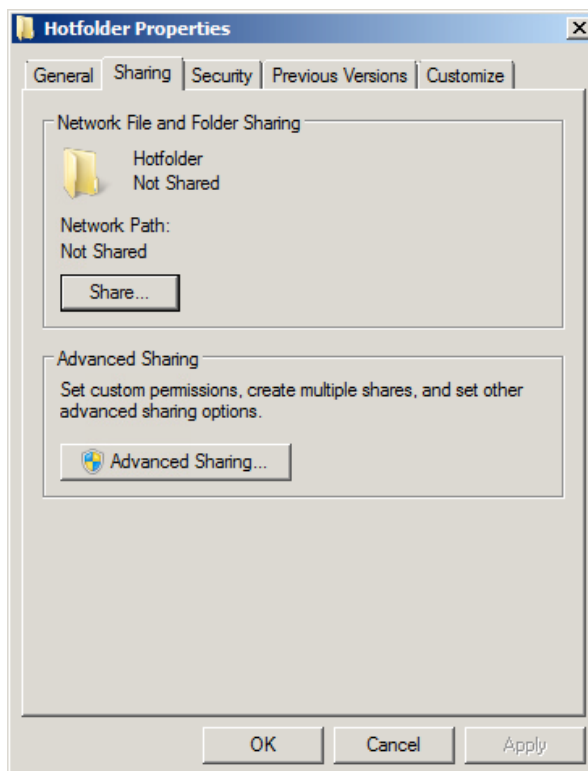
The Esko Proof Server runs on Windows as a service. To enable Esko Proof to communicate with hotfolders via the network, you need to assign network access rights for the Esko Proof Server by creating a user with administrative rights.

3 In a network environment, you need to set up a folder containing one subfolder.

- The folder must be set up as a shared folder for the network: right-click the folder and choose Properties from the context menu.

On the Sharing tab, click the Share... button and choose who to share the hotfolder with (either everyone or specific users). In Permission Level, to give those users Read/Write privileges.

Setting up folder sharing in Windows



- The subfolder can then be used as the hotfolder.

4 The user must be given read/write privileges and be logged in to:

- the computer with the Esko Proof Server
- the computer with the hotfolder

5 On the computer with the Esko Proof Server, browse to the hotfolder via My Network Places.

6 In System Manager, select a workflow.

7 Set the workflow offline by clicking on the green arrow at workflow entry.

8 On the Input tab, open the General pane and define a hotfolder.

TO PRINT VIA A HOTFOLDER

- **Copy print jobs manually into a hotfolder or**
- **Set up a hotfolder as a virtual printer. Setting up a virtual printer enables you to select Esko Proof in the print menu of other applications. Jobs that are submitted for printing in this way are loaded into Esko Proof through the hotfolder.**

Jobs coming through your hotfolder are then processed according to the settings of the workflow associated with the hotfolder.

See also:

“Hotfolder” on page 39

“I have set up a hotfolder in a network, but submitted jobs do not appear in the job list. What is the problem?” on page 115

Chapter 8: Nestings

8.1 What are nestings?

The nesting feature in Esko Proof enables you to output any number of files collectively as one single print job.

There are two types of nestings: automatic and manual. Automatic nesting is defined for a specific workflow in System Manager. It ensures that all jobs processed via that workflow are printed out as part of a nesting job. If a workflow is not set up for automatic nesting, nestings of chosen jobs can be compiled manually in Job Explorer.

In a workflow set up for automatic nestings, jobs are output as soon as, but not before, a defined state has been reached. Esko Proof arranges them in the nesting in accordance with the workflow settings and outputs them automatically. This gives users the freedom to submit non-urgent print jobs at any time.

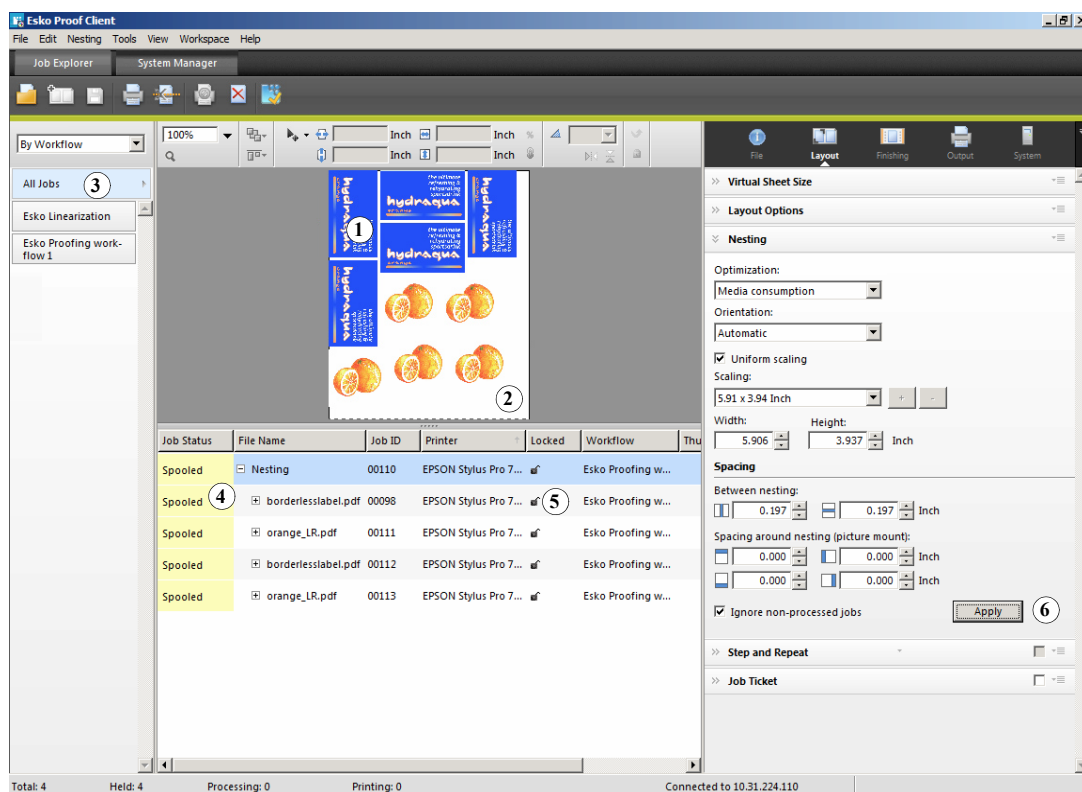
If a workflow is not set up for automatic nesting, you can create manual nestings. This gives you full control over which images are grouped together and how they are arranged on a nesting and also lets you perform job-specific changes to images before printing.



It is possible to output nestings as tiles by defining a sheet size that is bigger than the media size set for the printer.

8.2 User interface

User interface



1	Page on a nesting. Pages can be in any supported file format.
2	A nesting sheet represents the output size. If the defined sheet size exceeds the maximum media size supported by the selected printer, the nesting can be output as a tiling.
3	Click to display all loaded jobs. This enables you to create nestings of jobs from different workflows.
4	Tree view of job list.
5	Sets a page at its current settings and position on the sheet (right-click a column header if you don't see the "Locked" Column). A locked page (closed padlock) cannot be modified, nor can it be rearranged on the sheet. To make modifications, the page must first be unlocked (open padlock). It is possible to lock single pages of a multi-page document. Clicking the padlock icon locks and unlocks an image.
6	Saves your changes to the nesting. All images are rearranged according to the current settings made on the Nesting pane and the preview is updated.

8.3 Creating nestings

In System Manager, you can set up automatic nesting workflows. All jobs loaded in Esko Proof are automatically nested.

In Job Explorer, you can create manual nestings of selected jobs.

8.3.1 Automatic nestings

In a workflow set up for automatic nestings, printing starts automatically as soon as one of the following criteria has been reached:

- The defined length of time has elapsed since the last job was loaded.

This setting has priority over the other auto-nesting settings, e.g. a nesting will be printed after the set period even if the minimum percentage of the sheet or line has not been filled.

- The defined percentage of the sheet area has been filled
- The defined percentage of a line has been filled

TO CREATE A WORKFLOW FOR AUTOMATIC NESTING

1 Log on to Esko Proof as a user with administrative rights.

2 In System Manager, click the Layout tab and open the Nesting pane.

3 Select the “Nesting” check box.

4 Make the rest of your settings on the Nesting pane.

When you load a job, Esko Proof automatically creates a nesting and outputs it according to the workflow settings.



In an automatic nesting workflow, you do not normally have the chance to perform job-specific settings before job processing starts. There are two ways round this problem:

- In Job Explorer, cancel job processing
- In System Manager, set the workflow offline at workflow exit

When you are satisfied with your changes, click Print to restart job processing.

See also:

“Layout tab > Nesting pane” on page 53

8.3.2 Manual nestings

If you are not printing to an automatic nesting workflow, you can compile your own manual nestings and output them when you are ready.

TO CREATE A MANUAL NESTING



1 In Job Explorer, load one or more jobs as “hold” jobs.

In the case of jobs loaded via drag and drop or via a hotfolder, the loaded jobs are processed according to the workflow settings. To create a nesting of jobs loaded in this way, you may have to cancel job processing or set the workflow offline at workflow exit.

2 Create a nesting by:

- Clicking Create Nesting in the toolbar, or
- Right-clicking one or more jobs in the job list and choosing New Nesting from the context menu, or
- Selecting one or more jobs in the job list and choosing File > New Nesting

A nesting is created. Nesting jobs receive the name “Nesting”, followed by a consecutive number, e.g. “Nesting_42”. You can rename nesting jobs by selecting the job and choosing Rename from the context menu. The jobs are visible in the preview.



By clicking “All Jobs” at the bottom of the Selector, you can create nestings from jobs loaded in different workflows. Select the required jobs, choose the New Nesting command and, in the window that opens, select the workflow in which to create the nesting.

3 On the Layout tab, open the Nesting pane and make your required settings.

4 Click Apply to ensure that all the jobs are placed and arranged in the nesting in accordance with the defined settings.

All settings made manually are undone when you click Apply. You can prevent this by locking images. A locked page (closed padlock) cannot be modified, nor can it be rearranged on the sheet.

Jobs that are bigger than the defined sheet size cannot be placed.

See also:

“Layout tab > Nesting pane” on page 92

8.4 Editing nestings

8.4.1 Adding jobs to a nesting

You can add jobs to an existing nesting by:

- Selecting the nesting job and choosing Add Job to Nesting from the context menu, or
- Dragging and dropping an image from the job list onto the nesting job

Jobs that are added appear in the list of nested jobs, but are not initially visible in the preview.

To view newly added jobs, select the check box “Placed”. This setting is located next to the job in the job list.

To rearrange newly added jobs, select the nesting job. On the Layout tab, open the Nesting pane and click Refresh. All images are rearranged according to the current settings made on the Nesting pane and the preview is updated.

8.4.2 Adding/deleting sheets

Nestings do not necessarily have to be output on a single sheet or roll. You can add new sheets equivalent to the size of the original by choosing Nesting > New Sheet.

Similarly, you can delete the selected sheet by choosing Nesting > Delete Sheet.

8.4.3 Removing jobs from nestings

You can remove a job that you no longer want to output as part of the nesting by right-clicking on a nested job in the job list and choosing Remove from Nesting from the context menu. The job remains in the job list but is no longer part of the nesting.

Chapter 9: Esko Proof Control

9.1 What is Esko Proof Control?

During installation of the Server software, a button is created in the system tray on the lower right of the computer desktop (Windows) or in the Dock (Macintosh). This button represents Esko Proof Control, a tool used to control the Server.

Esko Proof Control icon



The Esko Proof Control button is green when the server is running, red when the server is stopped, and black while Control is launching or stopping the server.

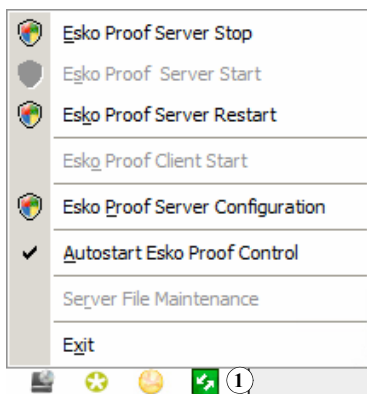
Esko Proof Control consists of a number of menu commands, which are accessed by

- Right-clicking the Esko Proof Control button (Windows)
- Holding down <Ctrl> and clicking the Esko Proof Control button (Macintosh).

9.2 Available features

Esko Proof Control

- 1 Esko Proof Control icon



9.2.1 Esko Proof Server Stop/Esko Proof Server Start/Esko Proof Server Restart

Choose this command to stop, start or restart the Esko Proof Server.

9.2.2 Esko Proof Client Start

Choose this command to start Esko Proof from the system tray. This command is only available if Client and Server are installed on the same computer.

9.2.3 Esko Proof Server Configuration (Windows only)

The Esko Proof Server runs on Windows as a service. By default, the login rights are defined for the local computer. This means that Esko Proof is not able to communicate with folders located in a network environment. This may present problems, for example, if you wish to print jobs via a hotfolder. In this case, you need to assign network access rights for the Esko Proof Server.

See also:

“Printing via a hotfolder” on page 101

9.2.4 Autostart Esko Proof Control (Windows)/Open at Login (Macintosh)

By default, Esko Proof Control will be started automatically whenever you turn on your computer. The command has a check mark next to it.

Choose this command to remove the check mark if you do not want Esko Proof Control to be started automatically. In this case, you can start the tool manually when required, as follows:

- go to Start > All Programs > Esko > Esko Proof > Esko Proof Control (Windows)
- click the Esko Proof Control icon in the dock (Macintosh)

9.2.5 Server File Maintenance

You must stop the Esko Proof Server to activate Server File Maintenance.

With the Server File Maintenance option, you can redefine the path to important server folders and select a new location for media profiles, reference profiles, the JobFolder, output files, and temporary files. As an example, you can move media profiles to a different partition to free up disk space on the C drive.

9.2.6 Exit (Windows)/Quit (Macintosh)

Choose this command to exit Esko Proof Control. You can then restart it manually.

See also:

“Autostart Esko Proof Control (Windows)/Open at Login (Macintosh)” on page 111

Chapter 10: Troubleshooting

If you encounter problems while working with Esko Proof, try performing the suggested solutions. If the problem still persists, please contact Esko Support.

10.1 Server/Logging on

I cannot see the Server user interface? How can I log in?

- | | |
|---------|--|
| Cause: | The Server runs as a service, so it has no user interface. All actions are initiated in the Client software. |
| Remedy: | To start the Client, click the program icon on the desktop (Windows) or in the Dock (Macintosh). |

I am working with Windows and the Server does not accept any connection from a Client. What can I do in this case?

- | | |
|---------|---|
| Cause: | A firewall might be set up on your version of Windows. |
| Remedy: | Unlock ports 50005 - 50025. Please refer to Windows help for further information. |

Although I am able to log on to Esko Proof successfully, I cannot see any users, workflows or output devices.

- | | |
|---------|---|
| Cause: | A firewall might be set up on your version of Windows. |
| Remedy: | Unlock ports 50005 - 50025. Please refer to Windows help for further information. |

When I try and log on, I get the error message “The user 'admin' is unknown. Please make sure that you type in the correct name.”

Cause: The file usr_0000.xml may be missing.

Remedy: In the Tickets folder, search for the file usr_0000.xml.

If you find the usr_0000.xml file, cut and paste it to a destination outside the Tickets folder. Then restart the Server. A new usr_0000.xml file is automatically created.

If the usr_0000.xml file is missing but you find a usr.0000.bak file, restart the Server. During Server restart, a new usr_0000.xml is automatically created.

If you cannot find either a usr.0000.xml or a usr.0000.bak file, contact Esko Support for a new usr.0000.xml file. When you receive the file, copy it to the Tickets folder.

The start screen opens briefly and then closes. Why is this?

Cause: This behavior occurs because Microsoft Windows uses the Data Execution Prevention (DEP) feature to help prevent damage from viruses and from other security threats.

Remedy: Deactivate Data Execution Prevention for Esko Proof as follows:

1 Right-click on Computer and choose Properties from the context menu.

2 Click Advanced system settings.

3 In the System Properties dialog, select the Advanced tab.

4 Click the Settings button for performance.

5 In the Performance Options dialog, select the Data Execution Prevention tab.

6 Select the radio button “Turn on DEP for all programs and services except those I select:”. Then click Add and navigate to the Client folder.

7 Select all the application files with the extension *.exe and add them to the list of programs which are not affected by DEP.

8 Then add all the application files located in the Server folder in the same way.

See also:

“Logging on to an Esko Proof Server” on page 10

10.2 Printing

Invalid page height

Cause:	The information from the bounding box is not taken into account.
Remedy:	In System Manager, highlight the workflow. On the Input tab, open the File formats pane and select “Calculate page size”.

Command Error

Cause:	Some printers can be used with two different types of ink (e.g. Ultrachrome Photo and Matte). The error message occurs if the type of ink selected in Esko Proof does not match the type of ink inserted in the printer.
Remedy:	Make sure that you select the right type of ink for the output device. The black ink cartridge lets you identify the type of ink being used. Make the correct ink type setting on the Media pane of the Device tab.

I am unable to load any jobs. Why?

Cause:	You may not have enough valid printer/output licenses.
Remedy:	Check whether you have enough licenses in the License Manager:

If you do, but are unable to load jobs anyway, proceed as follows:

1 In System Manager, disconnect all workflows from all output devices.

2 Highlight the linearization device.

3 On the Device tab, open the Information pane and choose "Select device type" from the drop-down list.

4 Save the settings for the linearization device.

5 Connect one workflow to one output device.

6 In Job Explorer, try and load a job.

Cause: The amount of used disk space is exceeded.

Remedy: Ensure that the amount of used disk space does not exceed 95%. If necessary, free up additional space on the hard disk.

During job processing a bco file is created in the default Output folder. You can reduce the amount of hard disk space required by Esko Proof during job processing by redefining this path, e.g. to a folder on a different drive, as follows:

1 Stop the Server.

2 Open the Tickets folder.

3 In a text editor, open the file sys_0000.xml

4 Search for the line beginning <Print type= and type in a new path.

I have set up a hotfolder in a network, but submitted jobs do not appear in the job list. What is the problem?

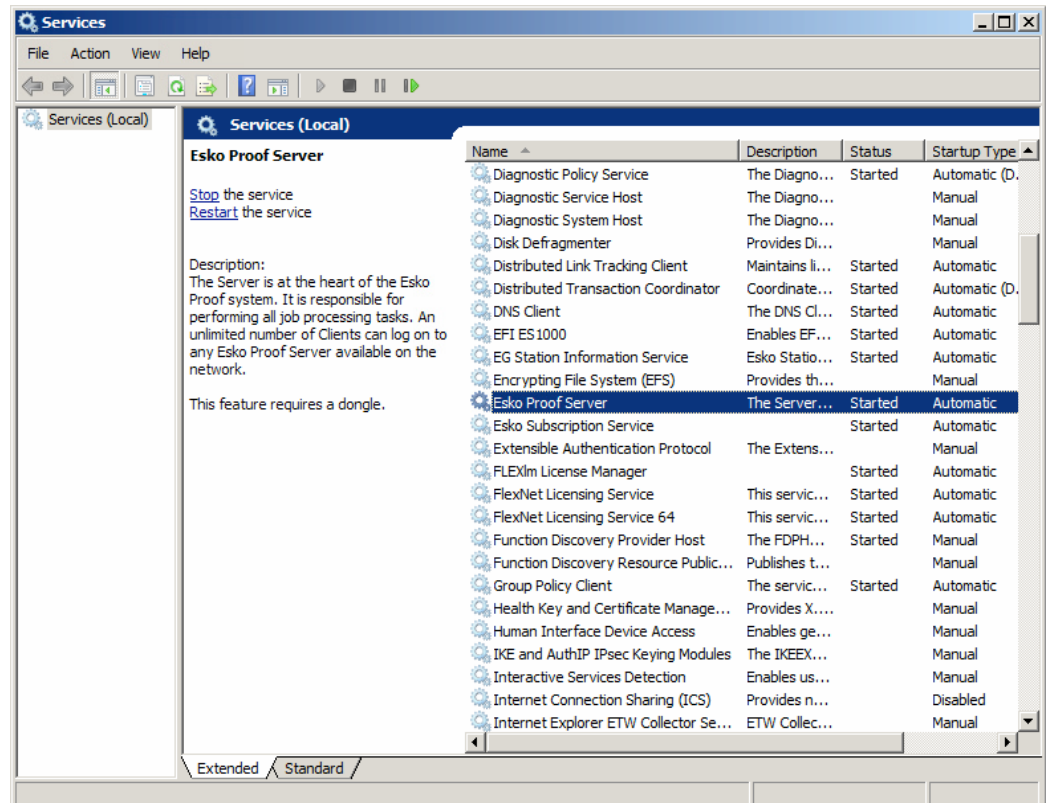
Cause: The Esko Proof Server runs on Windows as a service. By default, the login rights are defined for the local computer. This means that Esko Proof is not able to communicate with folders located in a network environment. This may present problems, for example, if you wish to print jobs via a hotfolder.

Remedy: You need to assign network access rights for the Esko Proof Server.

1 Right-click the Esko Proof Control icon in the system tray and select “Esko Proof Server Configuration” (Windows only).

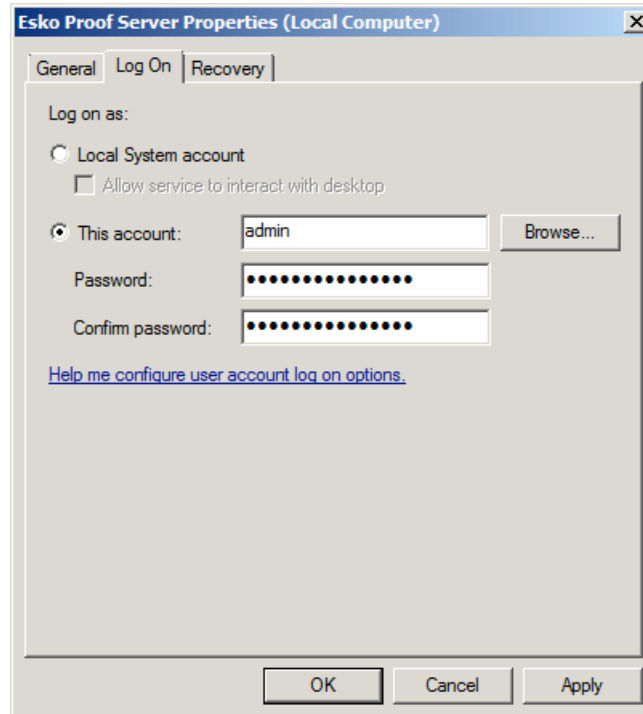
2 In the Services window that opens, right-click Esko Proof Server and select “Properties”.

Services window



3 In the Esko Proof Server Properties window that opens, select “This account” and enter the credentials of the user with administrative rights printing via the hotfolder.

Windows login rights



See also:

“Esko Proof Server Configuration (Windows only)” on page 111

“Printing via a hotfolder” on page 101

10.3 Media profiles

I have created a media profile, but why is it not available for selection in Esko Proof?

Cause:	The profile may not be saved under a unique name, making it difficult to recognize in the list of available media profiles.
Remedy:	It is recommended that you create a base linearization for a unique media name, so that the profile can be more easily found in Esko Proof.
Cause:	The epl file is not saved in the Profiles folder.
Remedy:	Make sure that the epl file and the ICC profile are saved in the Media Profiles folder.

10.4 USB devices

When I connect my USB measuring device to the computer, I am requested to install the device driver. Should the device driver not be detected automatically?

Cause:	Occasionally the device driver may not be detected automatically when you connect the USB device to the computer.
Remedy:	The device drivers are installed automatically with the software.

If the wizard prompts you to install the device driver from the DVD, browse to the USB Measurement Devices folder and select the appropriate device driver.

Why is my USB device not being detected?

Cause:	The device driver may not be installed.
Remedy:	Install the device driver as follows:

1 Right-click on Computer and choose Properties from the context menu.

2 Click Advanced system settings.

3 In the System Properties dialog, select the Hardware tab.

4 On the Hardware tab, click Device Manager.

5 Search for Universal Serial Bus controllers.

6 Expand the list and search for the device that is not detected. Non-detected devices appear with a question mark next to them.

7 Right-click on the device entry and choose Update Driver from the context menu.

8 Download and install the current driver by selecting the recommended setting.

Alternatively, a list of manufacturer home pages is provided with Esko Proof in the Tools and Other folder.

10.5 Support

If you run into difficulties while working with Esko Proof and you cannot find the solution in this manual, please contact Esko for technical assistance.

You will find the contact details for your region on the support web page: click this link or go to <http://esko.com/support> and click Contact Support.

Please make sure to provide the following information when contacting Esko:

- Version name and release number of your software
- License information
- Printer model
- Operating system with version number

Any additional hardware and software you may have installed (e.g. ISDN boards, virus scanners, etc.)

Chapter 11: Uninstalling

This section describes how to uninstall Esko Proof and the media profiles. The dialogs may vary slightly, depending on the application you are uninstalling.



Uninstalling Esko Proof also automatically uninstalls Esko Verification (if it is installed).

TO UNINSTALL VIA THE WINDOWS CONTROL PANEL

Use the procedure below to uninstall Esko Proof or media profiles.

- 1 Open the Control Panel.**
- 2 Click Uninstall a program.**
- 3 In the list of installed programs, right-click the application you want to uninstall and select Uninstall.**
- 4 Follow the procedure of your operating system for removing programs.**

Make sure to restart your computer before reinstalling.

TO UNINSTALL VIA WINDOWS SETUP PROGRAM

Use the procedure below to uninstall Esko Proof, media profiles or Unidriver.

- 1 Insert the software DVD into the DVD-ROM drive.**

The start screen starts automatically. If the start screen does not appear, double-click the Start.exe file located on the DVD.

- 2 Click Install Esko Proof to start the installation wizard.**
- 3 In the Welcome screen of the installation wizard, click Remove and follow the on-screen instructions to complete the uninstallation.**

Make sure to restart your computer before reinstalling.

TO UNINSTALL VIA MACINTOSH SETUP PROGRAM

Use the procedure below to uninstall Esko Proof or media profiles.

- 1 Insert the software DVD into the DVD-ROM drive.**

2 Double-click the program icon to start the setup procedure and follow the on-screen instructions until you come to the Installation Type screen.

3 On the Installation Type screen, select “Uninstall” from the drop-down list and click the Uninstall button.

4 Follow the on-screen instructions to complete the procedure.

Make sure to restart your computer before reinstalling.

Glossary

This glossary gives a brief explanation of the terms used in this manual.

Base linearization

Printers do not work in a linear fashion and achieve their maximum color density at approximately 50%. As a result, test charts for creating profiles do not have differentiated color patches for the upper chromatic values.

A base linearization makes the density curve of the printer linear (input value = output value), thus creating an important basis for ICC-compatible color management.

C

Color temperature of 6,774 Kelvin, which corresponds to daylight.

CIE 94

A tolerancing system utilizing three-dimensional ellipsoids as containers for color acceptance. CIE 94 is similar to CMC but lacks some of the hue lightness adjustments. CIE 94 colors have 95% agreement with color differences as our eyes see them. CIE 94 is used predominantly in the paint and coatings industry.

CIELAB

A color model based on the model proposed by the Commission Internationale de l'Eclairage (CIE) in 1931 as an international standard for color measurement. In 1976, this model was refined and named CIELAB. $L^*a^*b^*$ color is designed to be device-independent and perceptually uniform. $L^*a^*b^*$ color consists of a luminance or lightness component (L^*) and two chromatic components: the a^* component (from green to red) and the b^* component (from blue to yellow).

CIELCH

A color space similar to CIELAB, which uses cylindrical coordinates of lightness, chroma, and hue angle instead of rectangular coordinates.

CMC

A tolerancing system based on CIELCH. It portrays colors as three-dimensional ellipsoids and represents colors as they are interpreted by the human eye. CMC colors have 95% agreement with color differences as our eyes see them. CMC is used predominantly in the textile industry.

Compensation of plate characteristic

A function to linearize a non-linear plate characteristic of one-bit files before they are processed in color management. This enables the use of media profiles that are based on linear continuous-tone data.

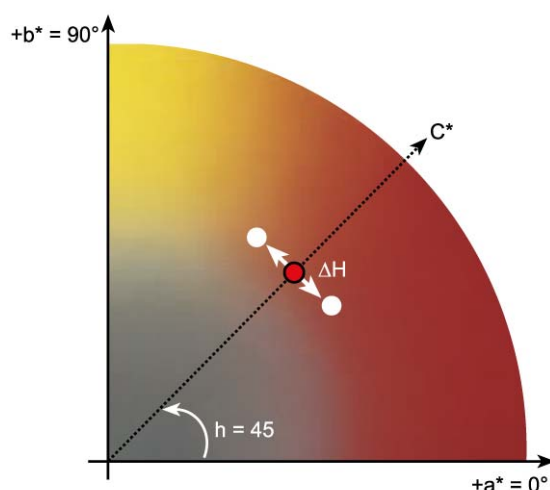
To produce a color-accurate proof from non-linear plate characteristics calculated into the one-bit files requires a media profile that is based on the IT8 target using the non-linear one-bit files.

Delta E

The mathematically calculated distance in the CIE $L^*a^*b^*$ color space between two colors. Delta E is used to check total color tolerances in a color-management environment.

Delta H

The difference in hue. In a color wheel, hue is defined by the angle between two colors.

Delta H

See also [Hue](#)

Delta T

The ISO 12647 norm defines delta T purely as a colorimetric value for dot gain — unlike the dot gain commonly referred to in printing houses, which is composed of an optical part (light trapping) and a mechanical part (dot spread).

Dot gain can only be measured using pure primary colors. If, for example, the full-tone color Cyan is output on an inkjet printer to simulate offset printing, it will not have the CMYK value 100, 0, 0, 0, but will also contain a percentage of magenta, yellow and black.

Device link profile

A Device Link profile represents a fixed combination of printer and media type.

Gamma

The ratio of the contrast range between original and reproduction. A gamma value of 1 means that the original and copy proof have the same contrast range.

Halftone screening

A process by which a continuous-tone image is converted into a pattern of regularly spaced dots. The individual dots all have the same density, but vary in size. The color tone of a printed area is dictated by the size of the printed dots — the larger the dots, the darker the reproduced color tone.

Hue

The dominant wavelength of a color. A color system, or model, measures color by hue, saturation and luminance. The hue is the predominant color, such as yellow or green, the saturation is the color intensity, and the luminance is the brightness.

L*a*b*

See [CIELAB](#)

Page

Image on a nesting. Pages can be in any supported file format. For multi-page documents, each page is nested and pre-viewed.

PDF

Portable Document Format. A method of formatting documents in such a way that they can be viewed and printed on multiple platforms using the freely available Adobe Acrobat Reader™.

Quantity of color

A process to define the maximum quantity of ink for each ink channel and so prevent colors from becoming oversaturated and “bleeding”.

RGB

The additive color system used in digital cameras and computer monitors where red, green, and blue light is captured separately and then combined to create a full color image.

Tone value

The amount that an ink halftone dot expands when applied to the surface of a media, causing darker tones or stronger colors. This is usually a factor of the type of press and the absorbency of the media.

For example, screen printing increases density by about 15%, so an image with a 50% black fill would appear as approximately 65% black after printing.

Sheet

Sheet refers to the defined output size of a nesting. It can be equal to, or smaller or larger than the media size defined for the output device. If the defined sheet size exceeds the maximum media size supported by the selected printer, the nesting can be output as a tiling.

System workflow

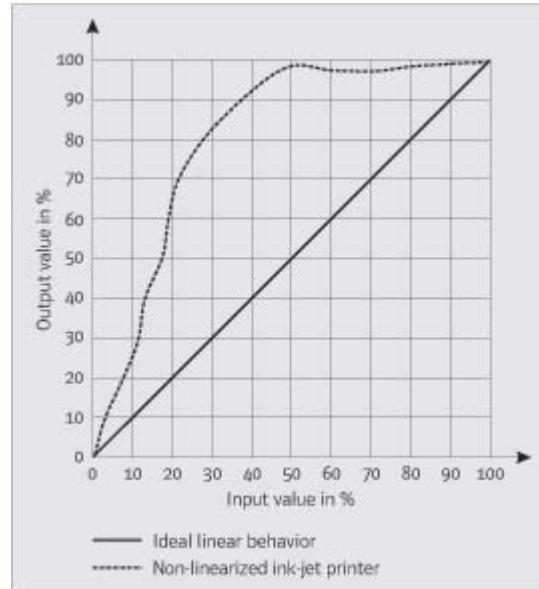
A system workflow consists of a user, workflow and output device. It refers to all work processes from file input by a user to file output on a specified printer.

Total ink limit

The total ink limit describes the point at which a printer attains its maximum color density.

Most inkjet printers do not increase color density in a linear fashion. In many cases, the maximum color density is achieved at approximately 50%, as illustrated in the graph.

Total ink limit



White point

In printing, the white point describes the whiteness of the paper. In colorimetric terms, the white point is defined as the chromaticity of a white light source or other emissive object. The white point may be expressed in terms of correlated color temperature or chromaticity coordinates.

XYZ

A device-independent color model developed by CIE (Commission Internationale de l'Eclairage), in which RGB values are mathematically transformed into a system that uses x, y and z as coordinates. While x and z values have no specific perceptual correlation, the y value represents brightness (luminance).

Index

A

Alignment

- job 48
- nesting job 77, 87
- snap to 83

B

Backups 67

- environment 70
- system configuration 68

Balancing, workload 38

C

Copies, number of 57

Creating

- nestings 106
- output devices 22
- system workflows 13
- users 19, 34
- workflow templates 28, 21, 34

Crop marks 55

- position 56

D

Deleting temporary files 35

E

Environment

- backing up 70
- restoring 71

EPL, selecting 61

EPS job detection 44

Esko Proof Control 110

- Autostart 111

F

Final run characteristics 58

First printable dot 58

Flipping job 46, 79

Fonts, missing 40

Footer 52

G

Guides 83

H

Hard disk space, available 33

Hotfolder 37

- setting up 100

I

Inverting job 57

J

Job

- alignment on nesting 77, 83, 87, 48
- flipping 46, 79
- inverting 57
- margins 48
- priority 86
- rotating 46, 79
- scaling 47, 46

Job Explorer

- context menus 85
- menus 74
- overview 24
- property inspector 89
- toolbars 86

Job list, displayed information 25

Job status 33

Job ticket 52

Jobs

- copying 80
- moving 81

L

Language of user interface, changing 29, 80

Layout

- nesting 48
- step & repeat 50

Linearization device 13

Load balancing 38

Logging on 10, 29, 74

Logo, job ticket 54

M

Measurement system, changing 30, 80

Media feed 62

Media length correction 62

Media profiles 8

- troubleshooting 117

Media size 62

Monitor profiles 30, 80

N

Nestings 104

- automatic 106
- editing 107
- job settings 75, 81
- layout aids 84, 48
- manual 106
- overlapping jobs 76, 87

Noise smoothing 58

O

Output device

- connecting 60, 22
- setting up 60

Overprinting 43

P

PDF

- page size 41

Preview 76

- settings 35, 82, 85
- zoom 82

Print engine 45

Print speed, influencing 36

Printer calibration 63

Printer features, special 63

Printing

- copies 57
- directly from Esko Proof 98
- separated files 57
- troubleshooting 114
- via a hotfolder 100, 39

Program

- folders 7
- overview 24

R

- Renaming jobs 86
- Resources, available hard disk space 33
- RIP resolution 36
- Rotating job 46, 79

S

- Scaling job 47
- Separated file output 57
- Server configuration 111
- Server, logging on to 10
- Setting up 13
- Settings
 - nesting 48, 75, 81, 84
 - Step & repeat 50
- Sheet size 46
- Step & repeat
 - input resolution 44
 - layout settings 50
 - settings 50
- Support 119
- System configuration
 - backing up 68
 - restoring 69
- System Manager
 - menus 28
 - overview 25
 - property inspector 33
 - toolbar 33
- System requirements 7
- System workflows 12
 - default 12
 - setting online 23, 13

T

- Temporary files, deleting 35
- Toolbar
 - Job Explorer 86
- Troubleshooting
 - licensing 10, 112
 - media profiles 117
 - printing 114
 - server 112
 - USB devices 118

U

- Uninstalling 120
- USB devices, troubleshooting 118
- User
 - creating 19
 - logging on 29, 74
 - password 34
 - settings 34

V

- Virtual printer 39

W

- Workflow
 - creating 21
 - high priority 36
 - settings 34
- Workflow template, creating 28
- Working color space 43
- Workload, distributing 38

Z

- Zoom 82