

Esko Cloud Connector 24.03

User Guide

03 - 2024

Contents

1. Copyright Notice.....	3
2. Before You Start.....	5
3. Installing the Plug-In.....	6
4. Configuring the Plug-In (optional).....	7
5. Using the Software.....	8
5.1. Browser Elements.....	8
5.1.1. Customizing the Column List.....	9
5.2. Opening a File.....	9
5.3. Placing a File.....	12
5.4. Exporting a File.....	14
5.5. Creating a Folder.....	15
5.6. Keyword Searching.....	16

1. Copyright Notice

© Copyright 2024 Esko Software BV, Gent, Belgium

All rights reserved. This material, information and instructions for use contained herein are the property of Esko Software BV. The material, information and instructions are provided on an AS IS basis without warranty of any kind. There are no warranties granted or extended by this document. Furthermore Esko Software BV does not warrant, guarantee or make any representations regarding the use, or the results of the use of the software or the information contained herein. Esko Software BV shall not be liable for any direct, indirect, consequential or incidental damages arising out of the use or inability to use the software or the information contained herein.

The information contained herein is subject to change without notice. Revisions may be issued from time to time to advise of such changes and/or additions.

No part of this document may be reproduced, stored in a data base or retrieval system, or published, in any form or in any way, electronically, mechanically, by print, photoprint, microfilm or any other means without prior written permission from Esko Software BV.

This document supersedes all previous dated versions.

PANTONE[®] Colors displayed in the software application or in the user documentation may not match PANTONE-identified standards. Consult current PANTONE Color Publications for accurate color. PANTONE[®] and other Pantone trademarks are the property of Pantone LLC. © Pantone LLC, 2015

Pantone is the copyright owner of color data and/or software which are licensed to Esko to distribute for use only in combination with Studio Visualizer. PANTONE Color Data and/or Software shall not be copied onto another disk or into memory unless as part of the execution of Studio Visualizer.

This software is based in part on the work of the Independent JPEG Group.

Portions of this software are copyright © 1996-2002 The FreeType Project (www.freetype.org). All rights reserved.

Portions of this software are copyright 2006 Feeling Software, copyright 2005-2006 Autodesk Media Entertainment.

Portions of this software are copyright ©1998-2003 Daniel Veillard. All rights reserved.

Portions of this software are copyright ©1999-2006 The Botan Project. All rights reserved.

Part of the software embedded in this product is gSOAP software. Portions created by gSOAP are Copyright ©2001-2004 Robert A. van Engelen, Genivia inc. All rights reserved.

Portions of this software are copyright ©1998-2008 The OpenSSL Project and ©1995-1998 Eric Young (eay@cryptsoft.com). All rights reserved.

This product includes software developed by the Apache Software Foundation (<http://www.apache.org/>).

Adobe, the Adobe logo, Acrobat, the Acrobat logo, Adobe Creative Suite, Illustrator, InDesign, PDF, Photoshop, PostScript, XMP and the Powered by XMP logo are either registered trademarks or trademarks of Adobe Systems Incorporated in the United States and/or other countries.

Microsoft and the Microsoft logo are registered trademarks of Microsoft Corporation in the United States and other countries.

SolidWorks is a registered trademark of SolidWorks Corporation.

Portions of this software are owned by Spatial Corp. 1986 2003. All Rights Reserved.

JDF and the JDF logo are trademarks of the CIP4 Organisation. Copyright 2001 The International Cooperation for the Integration of Processes in Prepress, Press and Postpress (CIP4). All rights reserved.

The Esko software contains the RSA Data Security, Inc. MD5 Message-Digest Algorithm.

Java and all Java-based trademarks and logos are trademarks or registered trademarks of Oracle corporation in the U.S. and other countries.

Part of this software uses technology by Best Color Technology (EFI). EFI and Bestcolor are registered trademarks of Electronics For Imaging GmbH in the U.S. Patent and Trademark Office.

Contains PowerNest library Copyrighted and Licensed by Alma, 2005 - 2007.

Part of this software uses technology by GlobalVision. ArtProof and ScanProof are registered trademarks of GlobalVision Inc.

Part of this software uses technology by Qoppa Software. Copyright © 2002-Present. All Rights Reserved.

All other product names are trademarks or registered trademarks of their respective owners.

Correspondence regarding this publication should be forwarded to:

Esko Software BV

Raymonde de Larochelaan 13

B - 9051 Gent

info.eur@esko.com

2. Before You Start

Esko Cloud Connector lets you download content from Share & Approve sites and work on it in Adobe® Illustrator®. After you've worked on it, you can then export it back to Share & Approve sites.

**Note:**

For using Esko Cloud Connector in combination with Studio, please refer to the Studio documentation.

Before you start, you should make sure that the Share & Approve administrator has given you login credentials and assigned you to at least one organization and site.

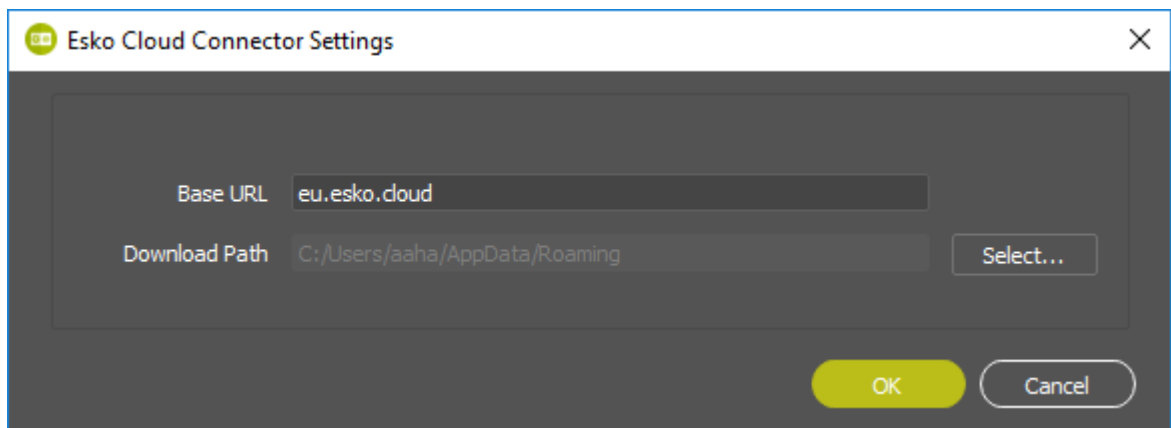
3. Installing the Plug-In

1. Make sure Adobe Illustrator is not running.
2. Run the executable file you downloaded.
3. Follow the on-screen instructions to install the plug-in. The installation program will install or update Esko Data Exchange as needed. It may also install some required operating system redistributables.

4. Configuring the Plug-In (optional)

After you have installed the plug-in, the next step is to configure it if you do not want to use the default settings. To use the default settings, you do not need to do the following steps, as the plug-in will set them when you launch Illustrator.

1. In the Esko Cloud Login dialog box, click **Esko Cloud Settings**. The Esko Cloud Connector Settings dialog box opens containing the default configuration settings.



2. If your administrator has given you different Base URL, enter it here. You can also choose a different path for downloaded files by clicking **Select** and choosing the new location.
3. Click **OK** to save the settings.

5. Using the Software

5.1. Browser Elements

Esko Cloud Connector is a browser that you use to download files from an Share & Approve site that you then work on and upload.

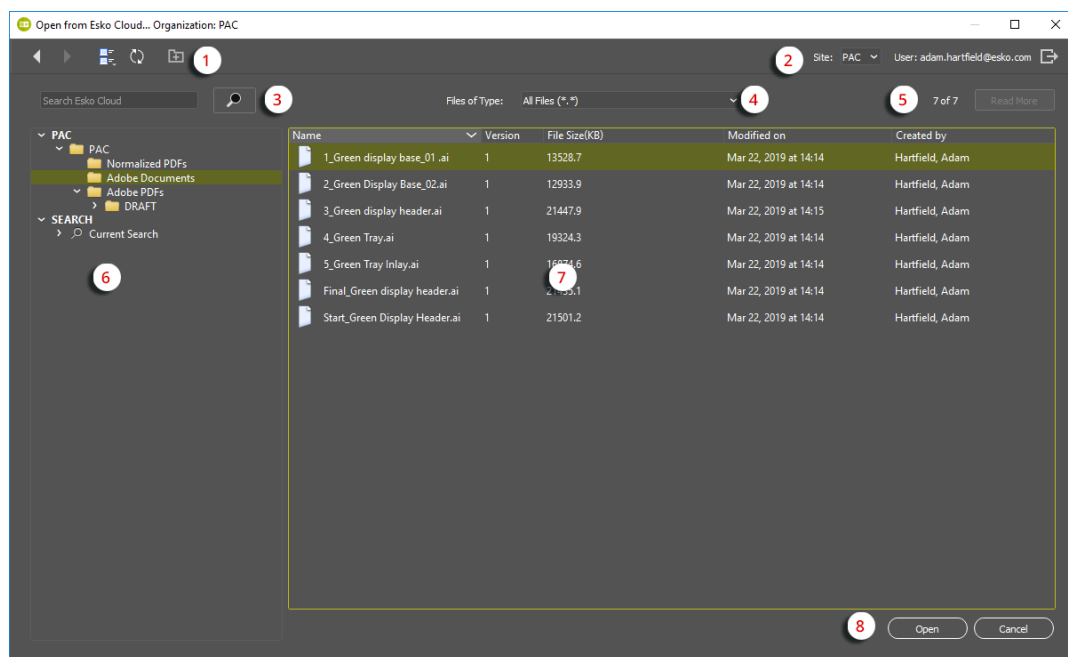



Table: Browser Elements

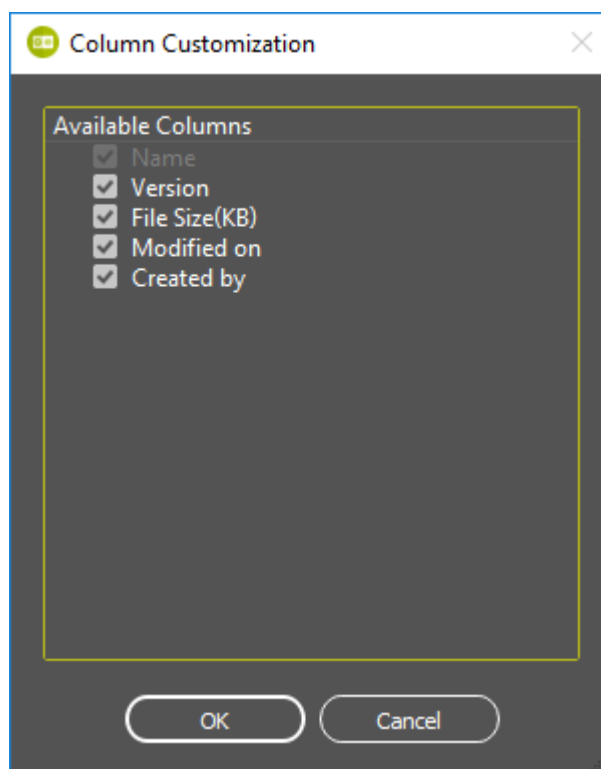
Area	Description
1	Toolbar containing Back , Forward , List Style , Refresh , and Create Folder .
2	Current Share & Approve site, current user, and Logout . To change the current Share & Approve site, choose it from the drop-down list box.  Note: You remain logged in until you click Logout .
3	Keyword Search field and action button
4	Files of Type selector that controls the contents of the list pane.
5	Number of entries in the list and Read More (available when applicable)
6	Tree control in which you select the folder to view, or see the results of the last keyword search. Drag the bar between the tree and the document list to adjust the size as desired.

Area	Description
7	List of folders and files contained in the folder you selected in the tree control.
8	Open or Place and Cancel .

5.1.1. Customizing the Column List

You can choose which columns appear in the list pane.

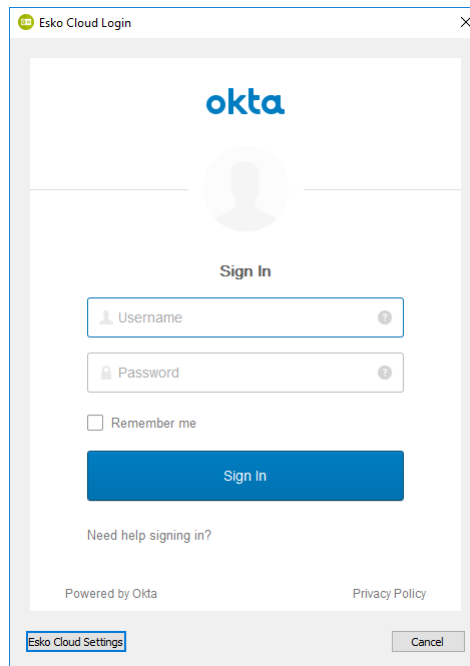
1. Right-click a column header in the list and click **Customize**.
2. In the Column Customization dialog box, select or deselect the checkboxes as desired. **Name** is always visible.



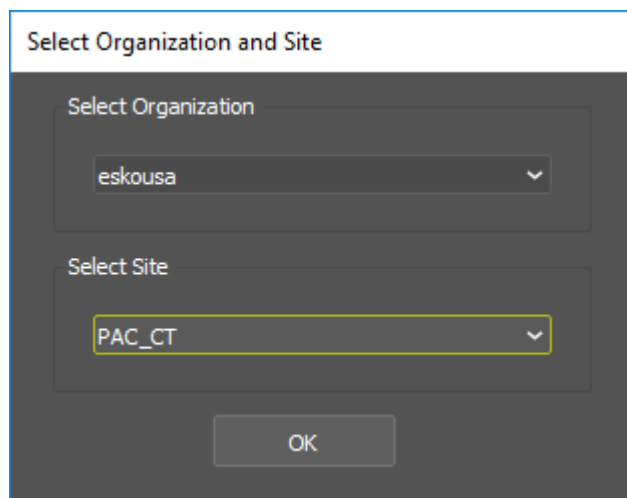
3. Click **OK**. The list updates to reflect the changes you made.

5.2. Opening a File

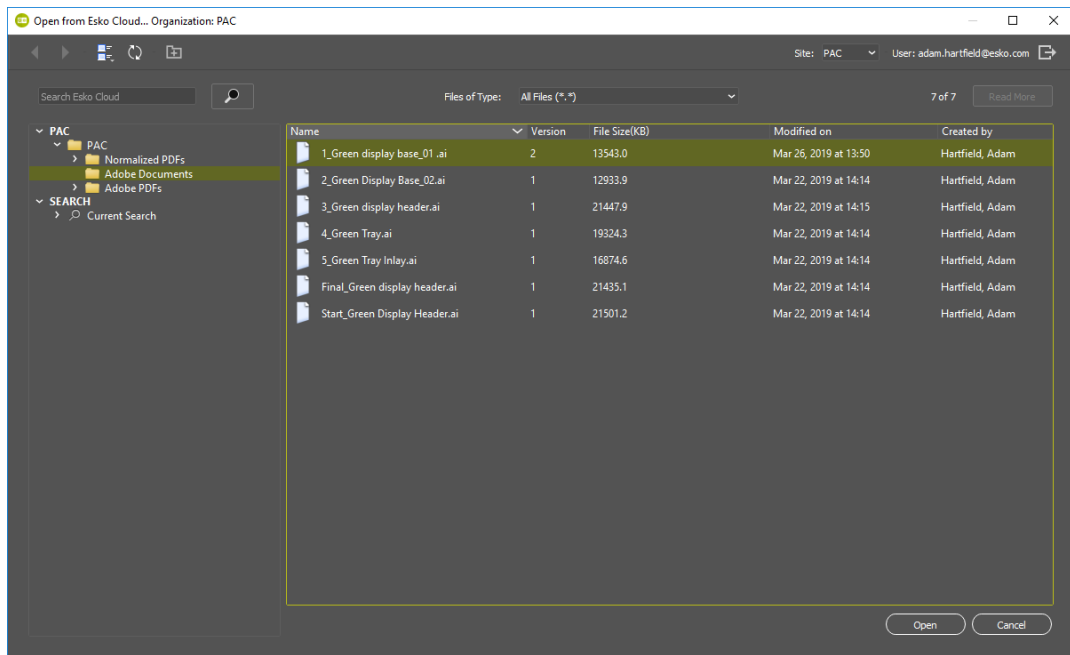
1. Click **File > Esko Cloud > Open**.
2. You will have to log in to the Esko Cloud if you have not already done so. Enter your credentials in the fields and click **Sign In**.



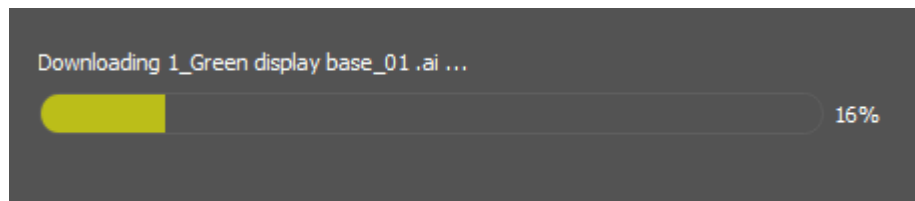
3. Once you have logged in successfully, If you have access to more than one Share & Approve site, select the site to use and click **OK**. If you have access to only one site, you will not see this dialog box.



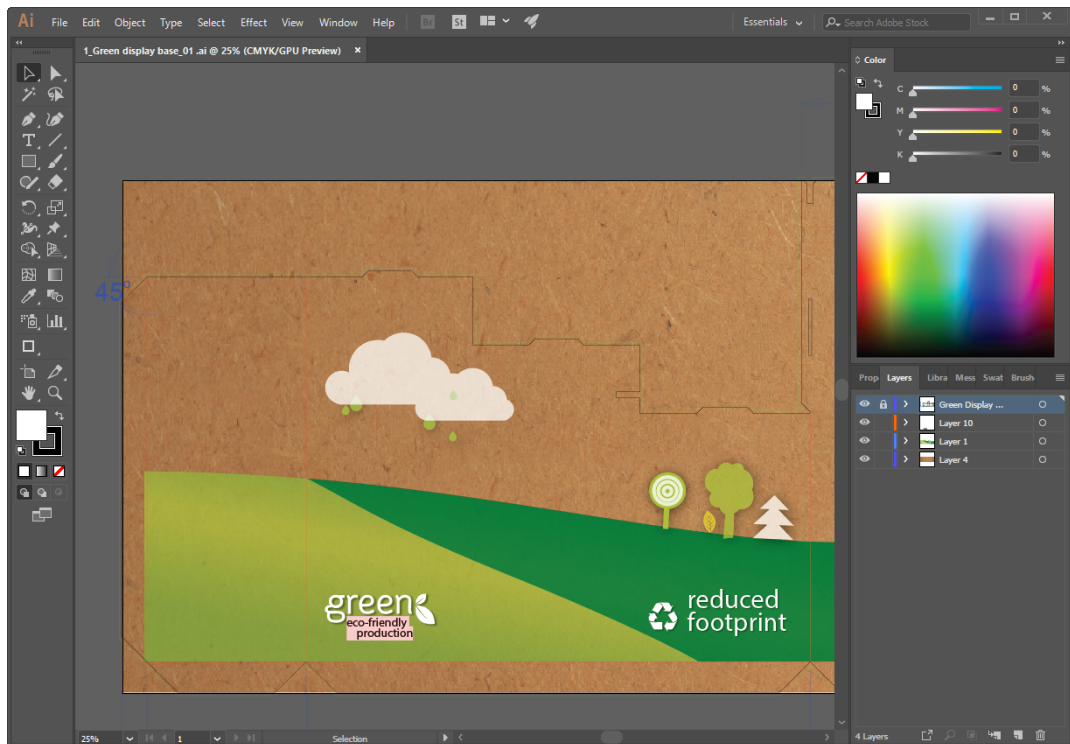
4. The browser appears. Make sure to set the **Files of Type** selector appropriately so it lists the type of files you want to download.
5. Navigate to the desired folder in your site using the folder list.
6. Select the file to open and click **Open**, or double-click it.



7. A progress bar appears during the download.

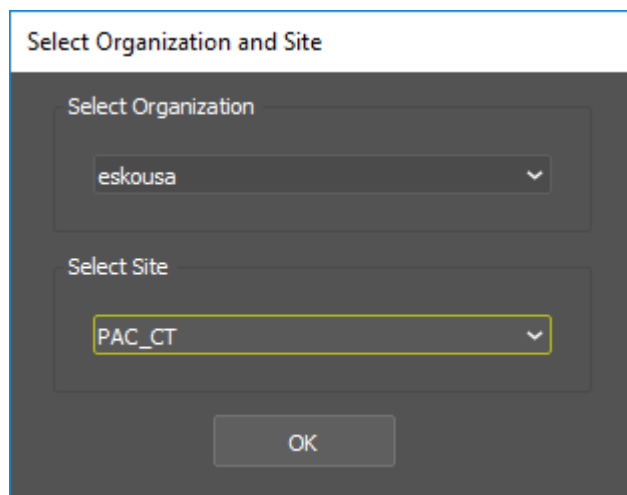


8. Illustrator displays the file, ready for you to work on.

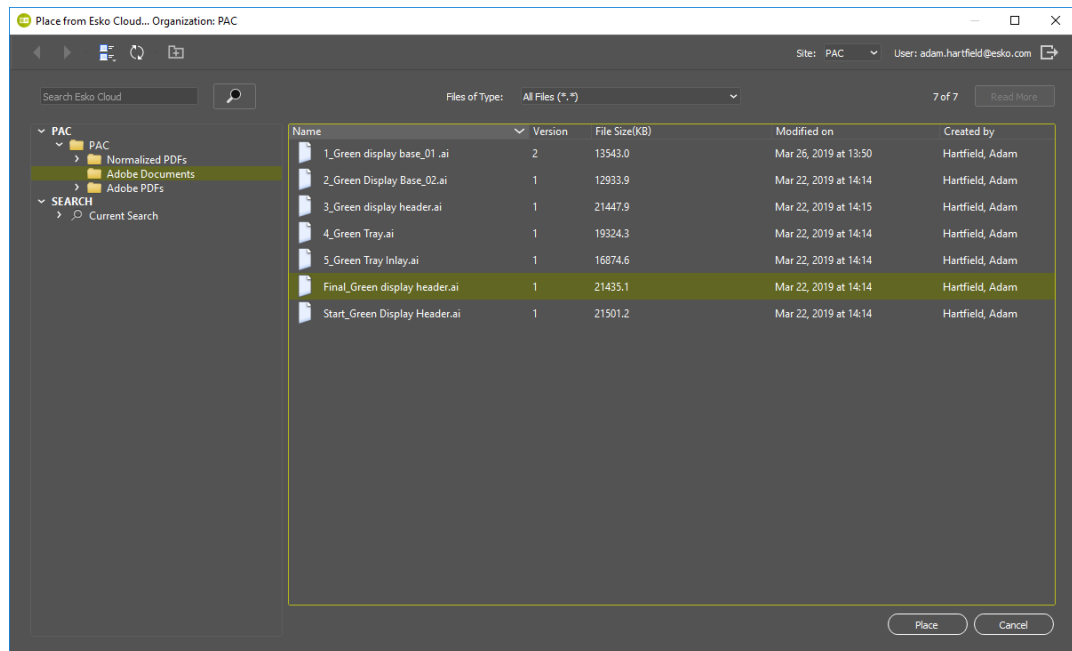


5.3. Placing a File

1. Open the Illustrator document into which you want to place the file.
2. Click **File > Esko Cloud > Place**.
3. Once you have logged in successfully, If you have access to more than one Share & Approve site, select the site to use and click **OK**. If you have access to only one site, you will not see this dialog box.



4. The browser appears. Make sure to set the **Files of Type** selector appropriately so it lists the type of files you want to download.
5. Navigate to the desired folder in your site using the folder list.
6. Select the file to open and click **Place**, or double-click it.

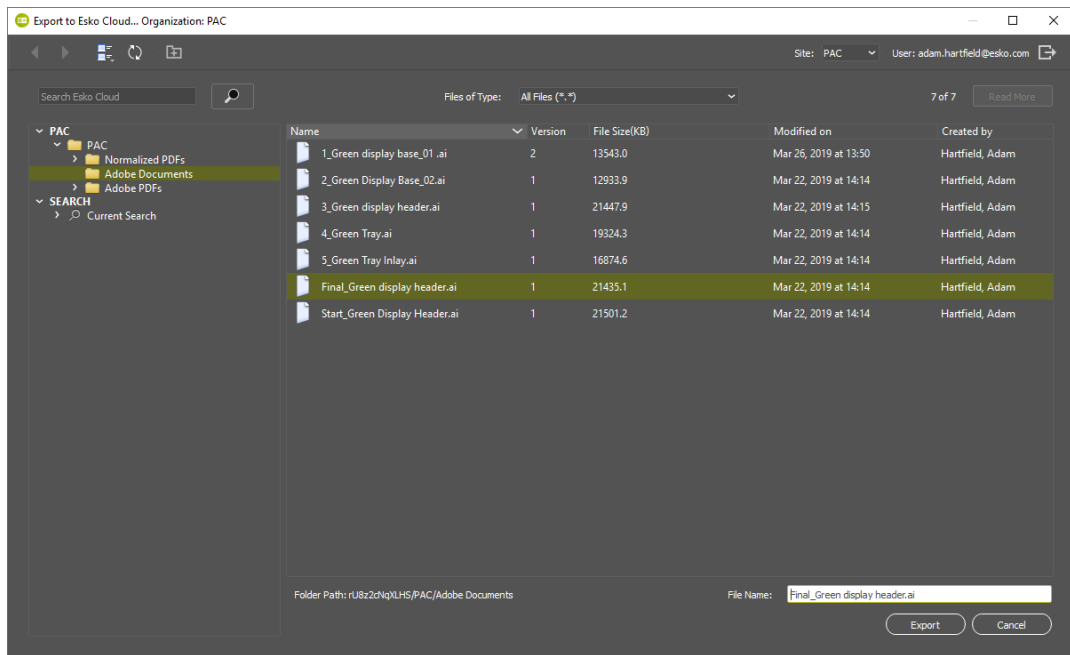


7. A progress bar appears during the download.
8. Illustrator places the file into the open document, ready for you to work on.

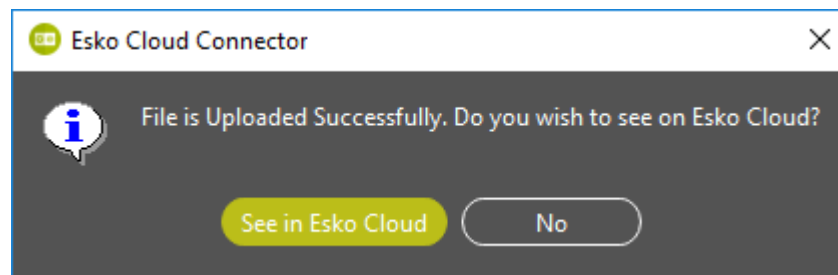


5.4. Exporting a File

1. In your open Illustrator document, click **File > Esko Cloud > Export**, and then choose either **Esko PDF** (see note below), **Adobe PDF**, or **Adobe Illustrator**. You may be prompted to log in if you are not already authenticated.
2. In the folder list, select the folder to contain the exported file.
3. The name of the Illustrator document is automatically used as the filename. Change it if desired in the Filename field. If the document already exists at this location, Esko Cloud creates a new version of the document.




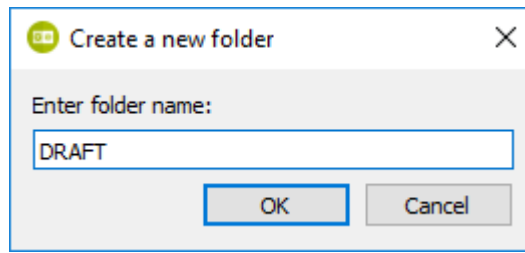
4. Click **Export** to upload the file to your Share & Approve site.
5. A progress bar appears during the upload.
6. To see the file on the Share & Approve site, click **See in Esko Cloud** to start sharing the document and its approval process. To return to Illustrator, click **No**.



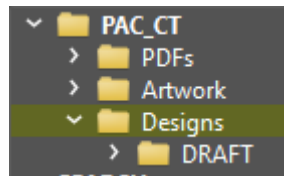
Note: An Esko PDF document is a PDF with additional metadata useful to Esko applications. There are two types, **PDF+** with processing steps functionality, and **Normalized PDF** for compatibility with older software. Select the format of Esko PDF document to use in the Preferences panel of the Ink Manager plug-in, part of the Data Exchange plug-in.

5.5. Creating a Folder

1. Select the parent folder in the tree.
2.  Click **Create Folder**.
3. Enter a name for the folder and click **OK**.



4. The new folder appears in the tree.



5.6. Keyword Searching

1. Enter your search term in the Search Esko Cloud field. Use * as a wildcard for multiple characters. This searches for folders and filenames matching the search terms.
2. Set the **Files of Type** selector appropriately so that you will see all the search results.
3. Click the magnifying glass or press **ENTER** to perform the search.
4. The search results appear in the list pane.

