

# PLATEPATCHER 23.11

## HEAFORD



## USER MANUAL

09.11.2023

ESKO\*

© Copyright 2023

Esko-Graphics Imaging GmbH, 25524 Itzehoe, Germany

All rights reserved. This document and all information and instructions contained within are the property of Esko-Graphics. These documents contain the product descriptions according to their current state at the time of publication, but no responsibility whatsoever is taken for the correctness of this information. No guarantees are granted or expanded upon by this document. Furthermore, Esko-Graphics does not guarantee the illustrations relating to the usage of the products, or for the results from using the software or the use of the information contained herein. Esko-Graphics is not responsible for direct or indirect damages caused by the logical consequences or latent damages which may result from the use of the software, or from the impossibility of software use or of the information contained herein.

The technical data contained herein and the content of this manual are subject to change without prior notification. Revisions which point out such changes and/or supplements may be issued from time to time.

Without express written consent, no part of this document may be reproduced, transferred, electronically stored or published, irrespective of the reasons and irrespective of the method or means used, i.e. electronic, mechanical, by printing, microfilm, etc.

These documents replace all previous versions.

Grapholas® is a registered trademark of Esko-Graphics Imaging GmbH.

Cyrel®, Cyrel® Digital Imaging System and Cyrel® Digital Imager (CDI) are registered trademarks of DuPont.

Microsoft and the Microsoft Logo are registered trademarks of Microsoft Corporation in the USA and other countries.

Esko-Graphics software may include the "RSA Data Security, Inc. MD5 Message-Digest Algorithm".

JDF and the JDF Logo are trademarks of the CIP4-Organisation. Copyright 2001 The International Cooperation for the Integration of Processes in Prepress, Press and Postpress (CIP4). All rights reserved.

Java and all Java-based trademarks and logos are trademarks or registered trademarks of Sun Microsystems in the U.S. and/or other countries.

Some parts of this software use technologies of JGoodies, Barbecue (Copyright 2003, International Barcode Consortium), and Jakarta (licensed by Apache: [www.apache.org/licenses/LICENSE-2.0.txt](http://www.apache.org/licenses/LICENSE-2.0.txt)).

All other product names are trademarks or registered trademarks of their respective owners.

# Table of Contents

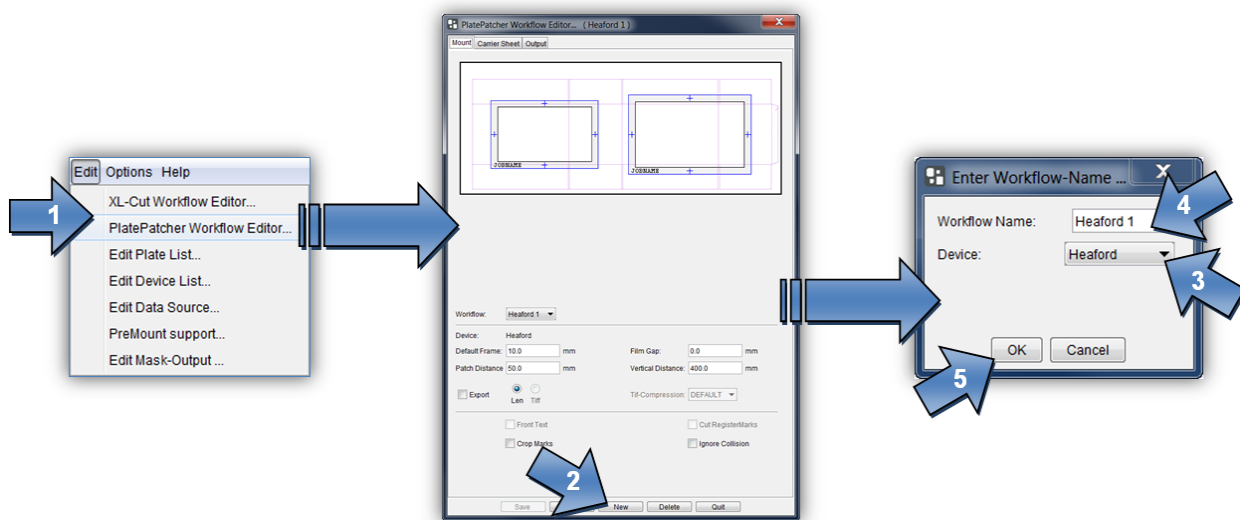
Heaford PlatePatcher Output .....	4
SETTING UP HEAFORD OUTPUT .....	4
REGISTER AND MOUNTING MARKS FOR PLATEPATCHER.....	8
SELECTING TECHNICAL INKS .....	9
EDITING A JOB.....	10
SELECTING MULTIPLE PLATE PIECES .....	13
ZOOMING THE VIEW IN AND OUT .....	13
<i>Moving the View</i> .....	13
ADDING OR REMOVING FILE NAMES .....	13
RECALCULATING PLATE PIECES .....	14
GROUPING PLATE PIECES AND UNGROUPING GROUPS .....	14
ADDING ADDITIONAL REGISTER MARKS IN THE CENTRE.....	15
AUTOMATICALLY REMOVING OVERLAYS .....	16
RESETTING REGISTER MARK POSITIONS .....	16
REMOVING REGISTER MARKS.....	16
HIDING PLATE PIECES .....	17
CHANGING THE SIZE OF THE MOUNTING FILM .....	17
CUTTING LARGE PLATE PIECES.....	18
JOB INFORMATION .....	18
LOADING IMAGES VIA "DRAG & DROP" .....	18
Support .....	18

## Heaford PlatePatcher Output

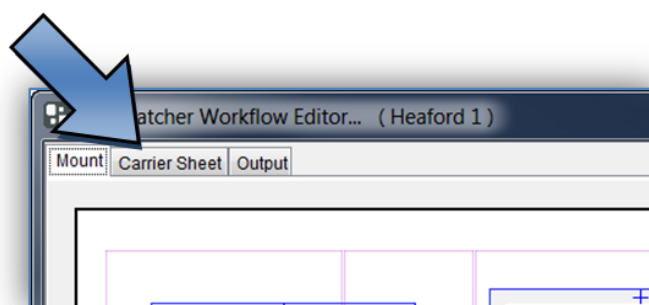
The PlatePatcher automatically searches the LEN or TIF files for free areas to cut out the remaining image content. The plate pieces have mounting marks allowing them to be mounted to the mounting film at a later stage with the aid of cameras.

## Setting Up Heaford Output

The Heaford output is configured in the "Edit" / "PlatePatcher Workflow Editor..." menu item. A new Heaford output must first be created:



You can switch to a different page in the upper area:

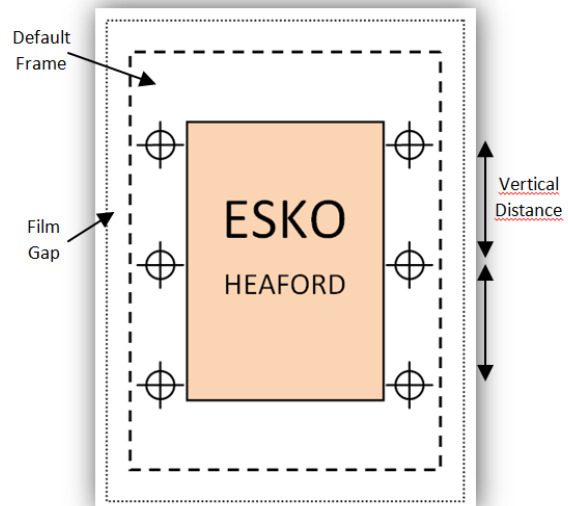
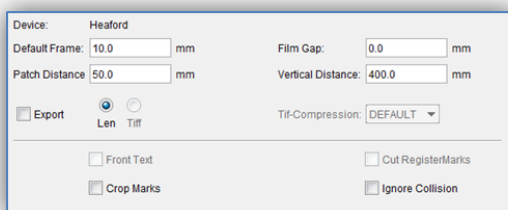


The output settings can now be individually adapted.

## Mount:

**"Default Frame"**: Minimum distance between the "patch" and the border of the created image. If this is set too small, a collision can occur during automatic grouping.

**"Film Gap"**: Distance between the register mark and the border of the image clip. This area is also used for subsequent cuts using the 45° knife.



**"Patch Distance"**: Defines the distance between two image elements by compiling them automatically in one grouping. Elements with a larger distance are separated.

**"Vertical Distance"**: Height above which additional register marks are added to the patch.

**"Export - LEN / TIF"**: The resulting images are exported directly into directories instead of transmitting them to the Merger. An extra licence is required to output TIFs.

**"Crop Marks"**: Adds guides to the corners of each output file which can be used for manual cropping.

**"Ignore Collision"**: Writes register marks even if they overlap with image data. In this case, the marks should be manually moved to a position where they will not interfere later when printing the image.

## Carrier Sheet:

**"Camera Distance"**: Determines the minimum camera distance. A higher value creates wider plate pieces.

**"Font Size"**: Size of the texts on the mounting film.

**"2nd Font Size"**: Size of the job name. With the setting "0", "Font Size" is used.

**"Register Mark File"**: You can select the mounting marks from a list. An overview can be found below.

Camera Distance:	100.0	mm	Mount Offset:	0.0	mm
Font Size:	4 mm		2nd Font Size:	0.0	mm
Register Mark File:	reg_503_cl...		Corner Radius:	5.0	mm
	<input type="checkbox"/> Top Grip		Regmark Scale:	1	
	<input checked="" type="checkbox"/> Add Job Name		<input type="checkbox"/> Emulsion Down		
	<input type="checkbox"/> Origin bottom, left		<input type="checkbox"/> Landscape		
	<input type="checkbox"/> Reference to technical ink		<input type="checkbox"/> Cut Carrier Sheet		
	<input type="checkbox"/> Round Corner				

**"Regmark Scale"**: Enlarges the mounting marks on the mounting film significantly.

**"Add Job Name"**: Automatically inserts the file name under each output file.

**"Cut Carrier Sheet"**: Automatically cuts the mounting film on the Kongsberg table after the register marks and the carton cut have been drawn. Depending on the plate distortion, the gripper distance and the height of the mounting film are automatically counted back.

**"Reference to technical ink"**: When activated, the centerline is related to the cut.

**"Landscape"**: The cutting file for the Kongsberg table is 90° rotated. This is necessary to, for example, cut a 4260 plate on an XL 20 table.

## Output:

**"Mount Target Folder"**: Is the folder where the mounting file is stored.

**"Patch Target Folder"**: Is the folder where the plate pieces are stored when "Export" is selected.

**"Plot Device"**: Sets the output format for the plotter. X-Guide and IPC are always possible for Kongsberg output. EPS output requires an extra license.

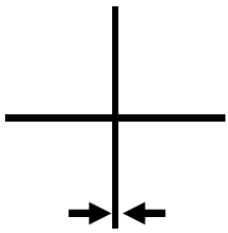
**"Technical Ink"**: In order to be able to identify the technical ink (carton cut) at a later stage, the designation must be determined according to the file name (for example, filename\_PLOT).

**"Mat Info"**: As an option, the name of the XL-Guide "Job Setups" which will be automatically loaded on the Kongsberg table can be entered in this field. This option is only available with "X-Guide" output.

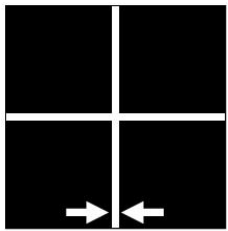
**"Crop Patches"**: If areas are grouped in different separations in multi patch mode, the resulting patches are reduced to the required size. If this function is deactivated, patches of the same size are created.

**"Old Heaford Format"**: Writes the output file for older versions of Heaford.

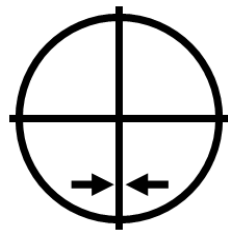
## Register and Mounting Marks for PlatePatcher



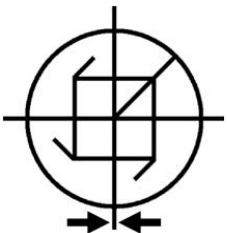
reg_2501	2,5 mm x 2,5 mm	0,5 mm
reg_501	5 mm x 5 mm	0,2 mm
reg_501	5 mm x 5 mm	0,3 mm



reg_5010_Negativ	5 mm x 5 mm	→← 0,1 mm
reg_10010_Negativ	10 mm x 10 mm	→← 0,1 mm



reg_502_c	5 mm x 5 mm	→← 0,2 mm
reg_503_c	5 mm x 5 mm	→← 0,3 mm



reg_5010_M	5 mm x 5 mm	→← 0,1 mm
reg_5020_M	5 mm x 5 mm	→← 0,2 mm

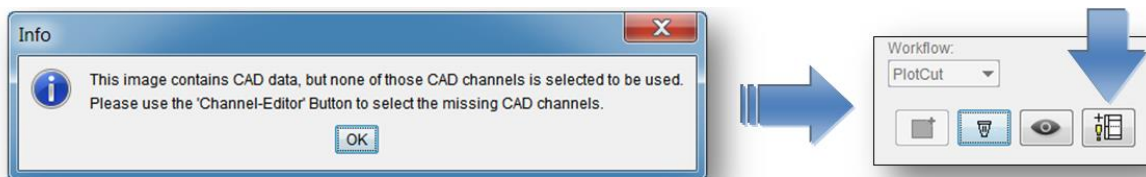


## Selecting Technical Inks

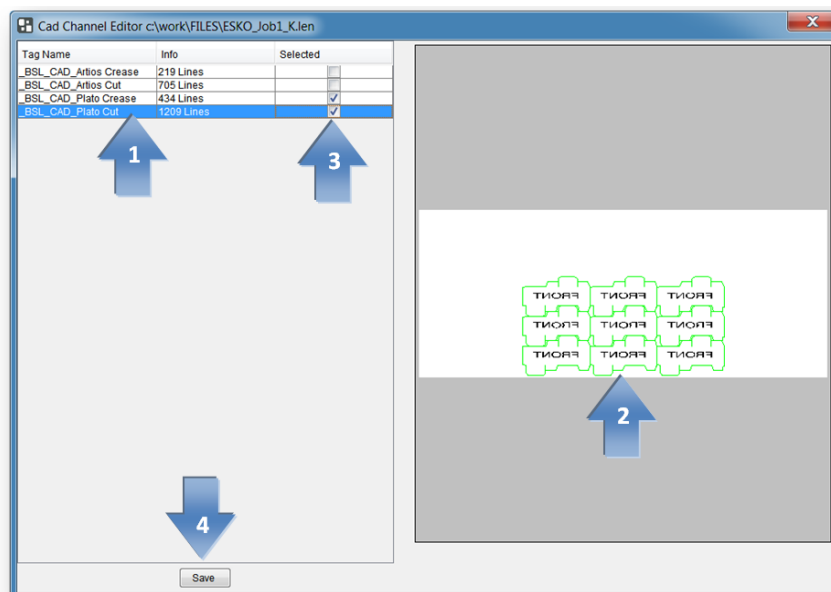
Since the Esko Automaton Engine 12, LEN files can be provided with the technical ink. The CF2 file is no longer used in this case.

Depending on the application, the name of the technical ink may be different or several technical inks may exist. For this reason, one or more technical inks can be selected.

When a job is loaded in the PlatePatcher, the LEN files are searched for technical inks and a warning message appears if an unregistered ink is included.



The "Channel-Editor" displays the currently selected file with the included technical inks:



A left mouse click on the CAD channel (1) updates the display (2).

In the "Selected" (3) area, the desired CAD channels can be selected; this selection is then saved in the selected PlatePatcher setting using "Save" (4). Different technical inks can be assigned to each PlatePatcher setting.

## Editing a Job

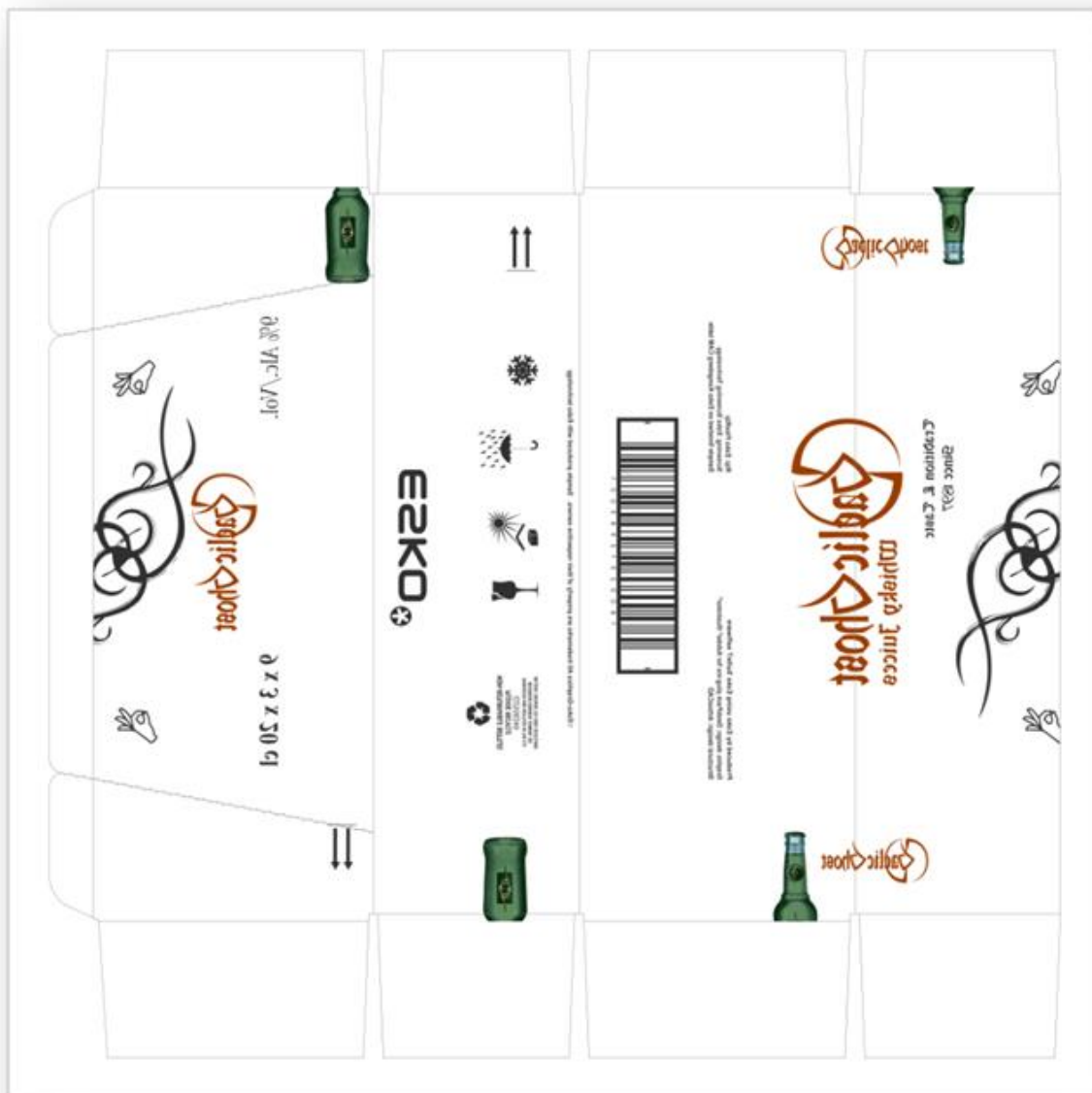
*Patching* of image data is explained using the following "GaelicGhost" job with 4 inks. The carton cut is already integrated into the LEN file as technical ink.

**The PlatePatcher requires the job data in the mounting alignment.**

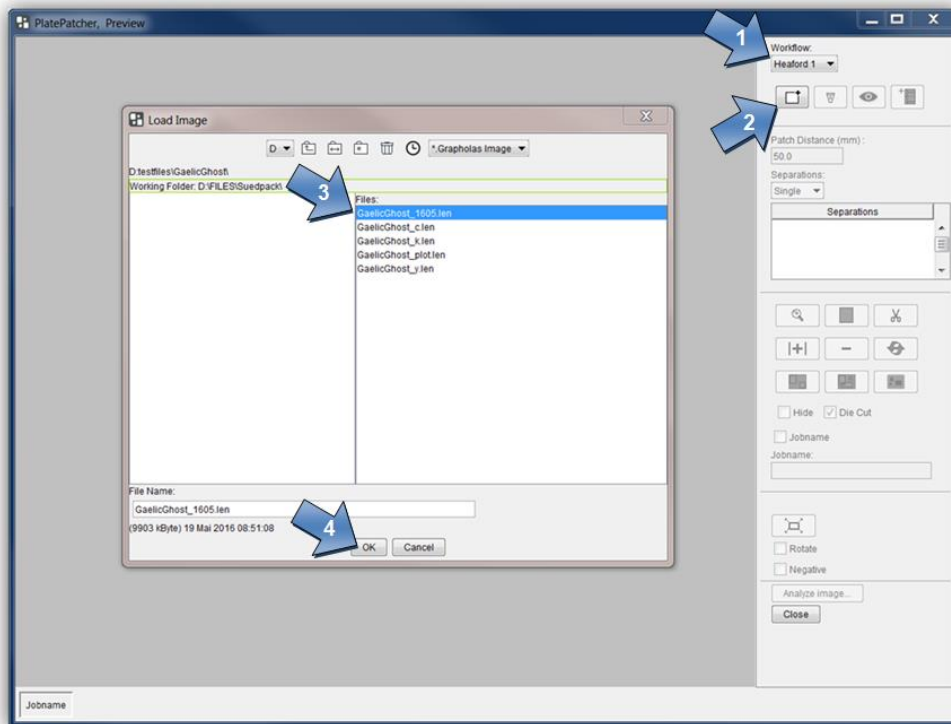
The inks of a job are assigned via the file names. The ink designation may not include spaces or underscores:

### Job:

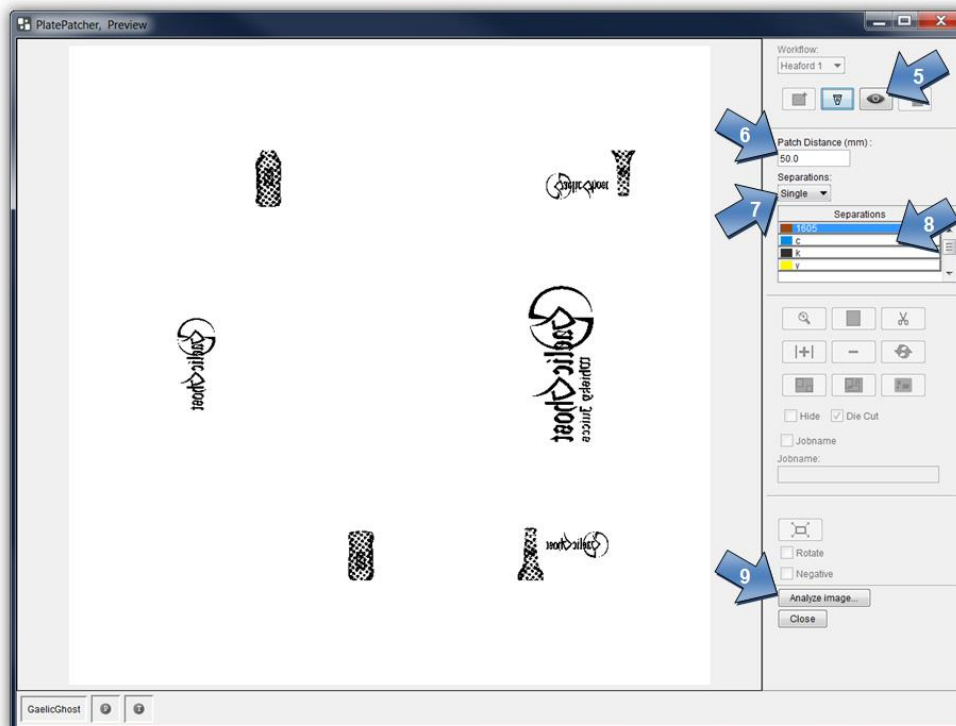
GaelicGhost\_c.len - GaelicGhost\_k.len - GaelicGhost\_y.len - GaelicGhost\_1605.len



Once the output has been selected (1), a new window is opened with the load button (2). An ink for the desired job is selected in the file structure (3) and loaded with OK (4).



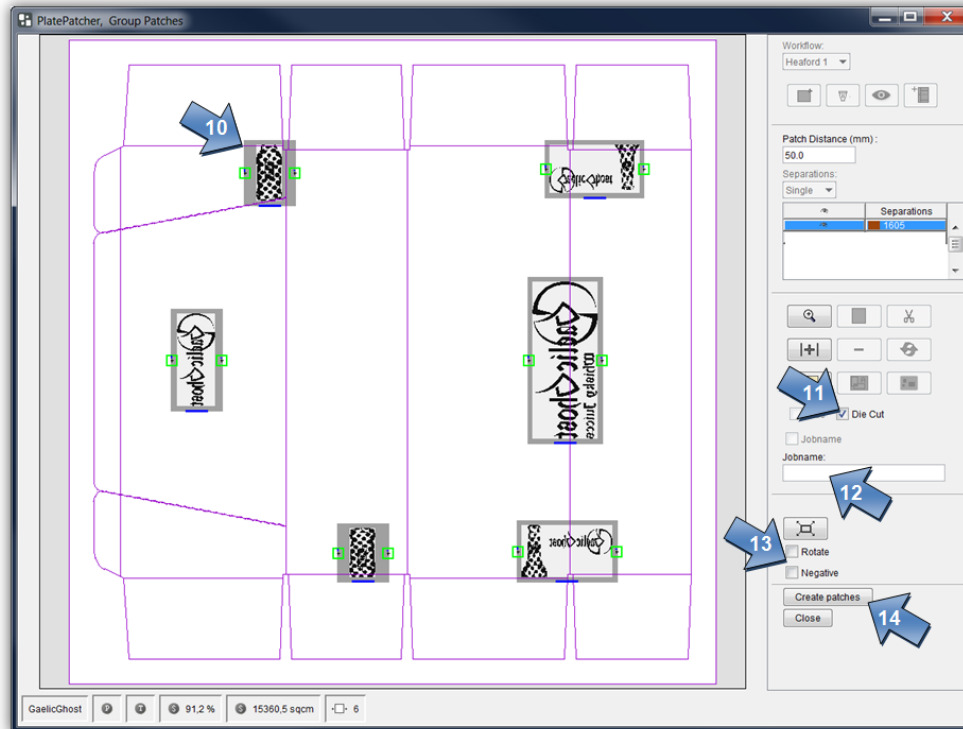
The first ink for the job is displayed. The complete job can be loaded in the Scope Viewer (5).



The permissible distance between the plate pieces can be set with "Patch Distance" (6). The job is prepared with "Analyze image" (9) in such a way that this distance is always maintained.

You can switch between "Single" and "Multi" under "Separations" (7). With the "Multi" option, all inks are displayed and edited at the same time. With "Single", each ink is edited individually.

Double clicking on the ink (8) or "Analyze image" (9) analyses the image data. Preselection by the PlatePatcher (10) can now be amended.



For each ink, the carton cut "Die Cut" (11) output can be deactivated. This only has an impact on the creation of the mounting film by the Kongsberg table.

An individual text can be added in the "Job name" field (12), which is drawn on the mounting film.

All image data in the output can be 90° rotated with the "Rotate" option (13). In addition, the output can also be inverted for film exposure units with "Negative" (13). These two functions apply for the entire job.

The image data and the corresponding mounting data for the Heaford are created with "Create patches" (14). This way all inks are edited until the complete job has been processed.

## Selecting Multiple Plate Pieces

A square can be drawn by pressing and holding the left-hand mouse button. All plate pieces within this frame are selected.

Alternatively, multiple plate pieces can be selected by pressing and holding the control key and the left-hand mouse button.

## Zooming the View In and Out



activates the zoom function.

A square is drawn around the desired image section by pressing and holding the left-hand mouse button.



displays the entire image.

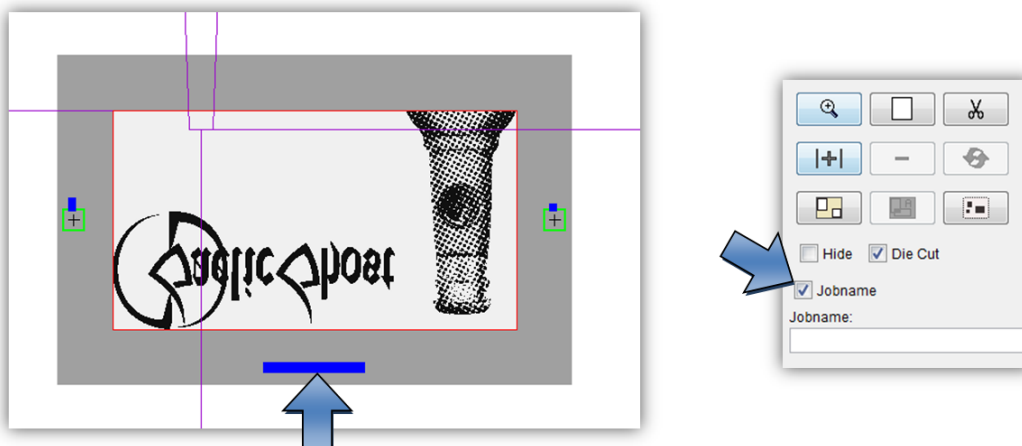
As an alternative, you can use the mouse wheel. The position of the cursor is used as the centre of the new view.

## Moving the View

The view is moved by pressing and holding the right-hand mouse button.

## Adding or Removing File Names

"Jobname" is used to add the file name to the lower border of the plate piece.



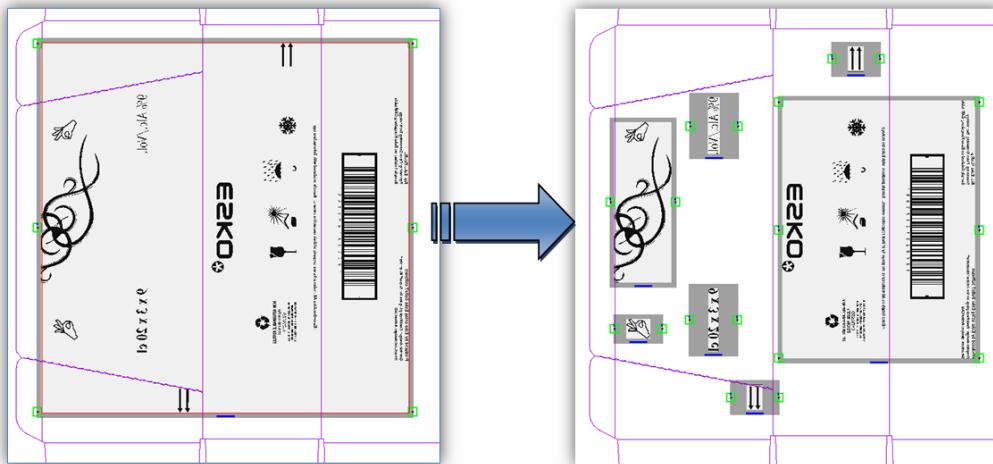
If this is not desired, this addition can be deactivated for each plate piece individually.

## Recalculating Plate Pieces



analyses the selected plate piece with the new "Patch Distance".

The register marks are recalculated and many smaller plate pieces are generated accordingly.

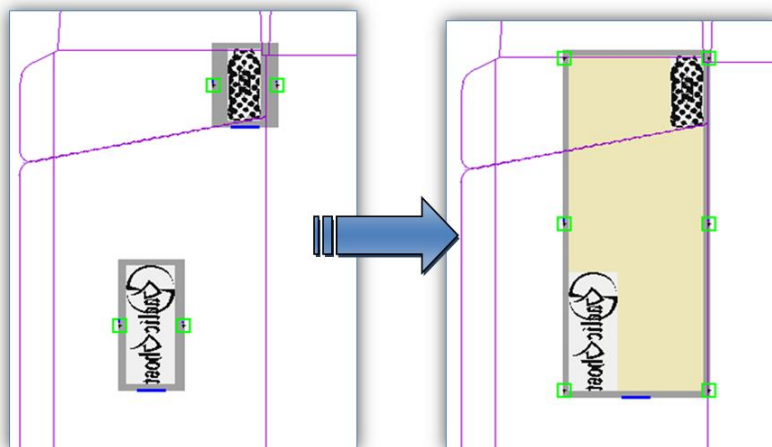


## Grouping Plate Pieces and Ungrouping Groups



groups the selected plate pieces or ungroups a group.

The register mark is recalculated.



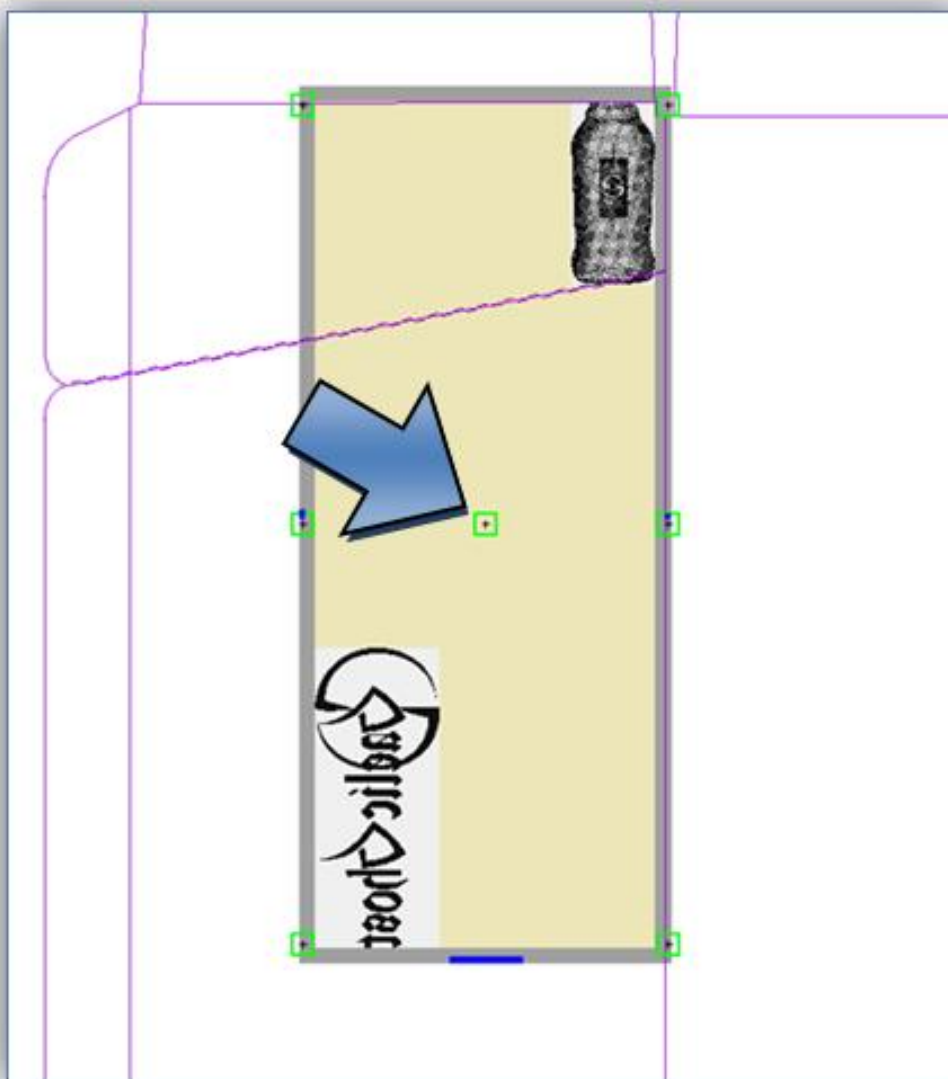
Alternatively, you can press the control key + "g" to group plate pieces.

## Adding Additional Register Marks in the Centre



adds an additional register mark to the selected plate piece.

The additional register mark is only inserted between the main register pair. This serves as a mounting aid for wide plate pieces.

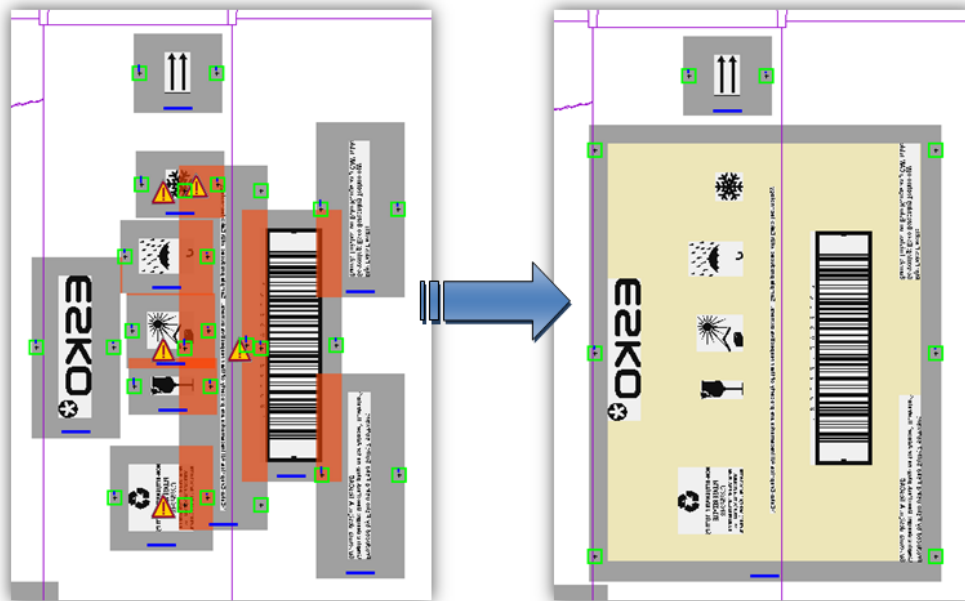


This register mark is mounted with the left camera of the Heaford.

## Automatically Removing Overlays



automatically removes all overlays by regrouping.



## Resetting Register Mark Positions



resets the register mark to the original positions.

## Removing Register Marks



removes the selected register mark.

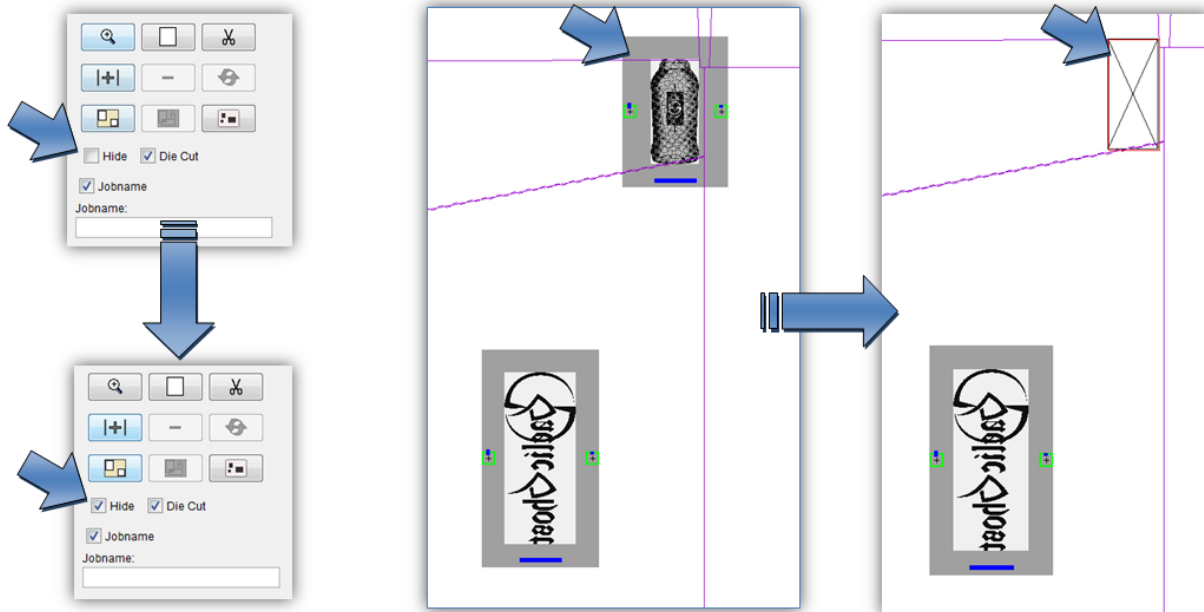
Only additional register marks can be removed. The main register mark pair in the centre cannot be removed.

The register mark must be double clicked to select it.



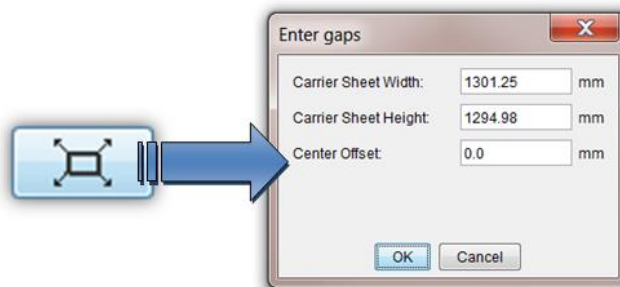
## Hiding Plate Pieces

Unwanted plate pieces can be hidden. The content of these plate pieces will be ignored for the output.



## Changing the Size of the Mounting Film

The size of the mounting film that is cut on the Kongsberg table corresponds to the dimensions of the job file. The output size can be expanded at a later stage.



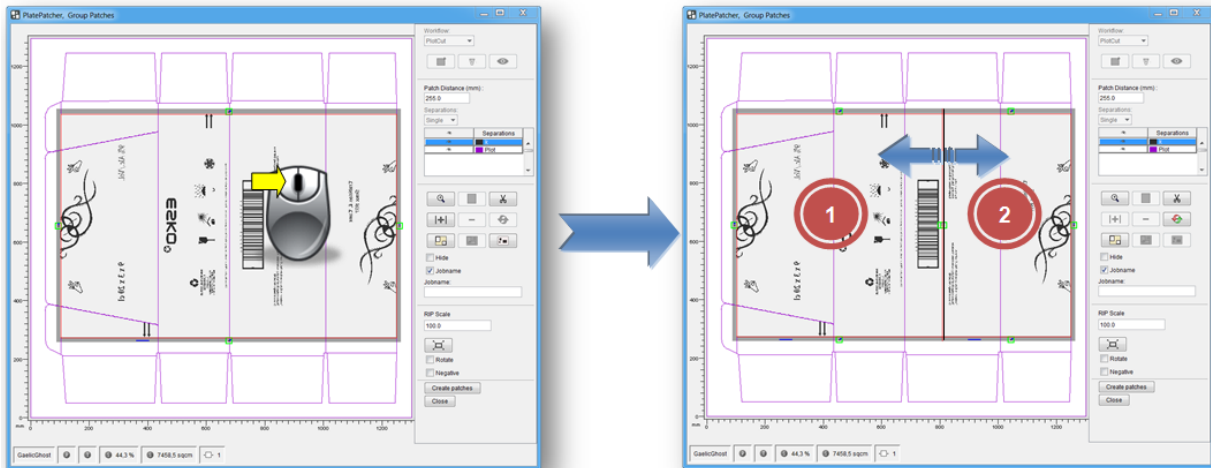
The width and/or height of the mounting film can be set with "Carrier Sheet Width" and "Carrier Sheet Height". "Center offset" adjusts the centerline.

## Cutting Large Plate Pieces



cuts a large plate piece.

After selecting the plate piece, this icon is activated. Then left-click the desired cut position within this plate piece. Cutting is not possible in the frame areas.



New positioning marks are added to each side apart from the seam. To manually undercut this seam, the two plate pieces overlap. In addition, a mark is added to the top and the bottom of the seam which can be used for manual cutting.

## Job information

For every job, an HTML file with the original file name is saved in the "*Patcher Redo*" directory. All important information concerning the job is stored in that directory. The output directory "d:\files\output\PatcherRedo" is preset.

## Loading Images via "*Drag & Drop*"

Image files (LEN and TIF) can directly be dragged into the "PlatePatcher" from the Windows Explorer or from the "Len Explorer". First, the data is copied into the working directory, then it is loaded.

## Support

Contact information can be found on [www.esko.com](http://www.esko.com).