

DIGITAL FLEXO SUITE 23.11



INSTALLATION

09.11.2023

ESKO*

© Copyright 2023

Esko-Graphics Imaging GmbH, 25524 Itzehoe, Germany

All rights reserved. This document and all information and instructions contained within are the property of Esko-Graphics. These documents contain the product descriptions according to their current state at the time of publication, but no responsibility whatsoever is taken for the correctness of this information. No guarantees are granted or expanded upon by this document. Furthermore, Esko-Graphics does not guarantee the illustrations relating to the usage of the products, or for the results from using the software or the use of the information contained herein. Esko-Graphics is not responsible for direct or indirect damages caused by the logical consequences or latent damages which may result from the use of the software, or from the impossibility of software use or of the information contained herein.

The technical data contained herein and the content of this manual are subject to change without prior notification. Revisions which point out such changes and/or supplements may be issued from time to time.

Without express written consent, no part of this document may be reproduced, transferred, electronically stored or published, irrespective of the reasons and irrespective of the method or means used, i.e. electronic, mechanical, by printing, microfilm, etc.

These documents replace all previous versions.

Grapholas® is a registered trademark of Esko-Graphics Imaging GmbH.

Cyrel®, Cyrel® Digital Imaging System and Cyrel® Digital Imager (CDI) are registered trademarks of DuPont.

Microsoft and the Microsoft Logo are registered trademarks of Microsoft Corporation in the USA and other countries.

Esko-Graphics software may include the "RSA Data Security, Inc. MD5 Message-Digest Algorithm".

JDF and the JDF Logo are trademarks of the CIP4-Organisation. Copyright 2001 The International Cooperation for the Integration of Processes in Prepress, Press and Postpress (CIP4). All rights reserved.

Java and all Java-based trademarks and logos are trademarks or registered trademarks of Sun Microsystems in the U.S. and/or other countries.

Some parts of this software use technologies of JGoodies, Barbecue (Copyright 2003, International Barcode Consortium), and Jakarta (licensed by Apache: www.apache.org/licenses/LICENSE-2.0.txt).

All other product names are trademarks or registered trademarks of their respective owners.

TABLE OF CONTENTS

System Requirements.....	4
Installation.....	5
Windows Service and Ports	7

System Requirements

The following minimum requirements must be met:

- Intel Dual Core 2 processor
- 8 GB RAM
- Network board
- screen resolution of 1,280 x 1,024 pixels
- Microsoft Windows 7 64bit
- disabled firewall
- disabled UAC (User Account Control)
- Grapholas 14 on the CDI
- Grapholas 20.1.4 for „PlateID“

The following configuration is recommended:

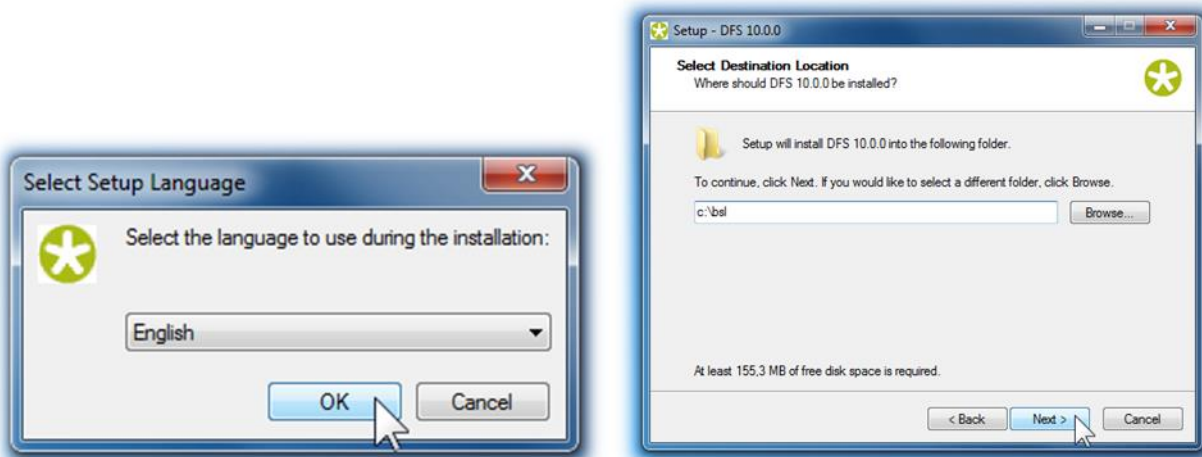
- Intel i9 processor
- 16 GB RAM
- Hard drives: 512 GB SSD
- 1 GB network board
- Microsoft Windows 11 64 bit
- disabled firewall and user account control (UAC)
- Grapholas 23.11 on the CDI

Installation

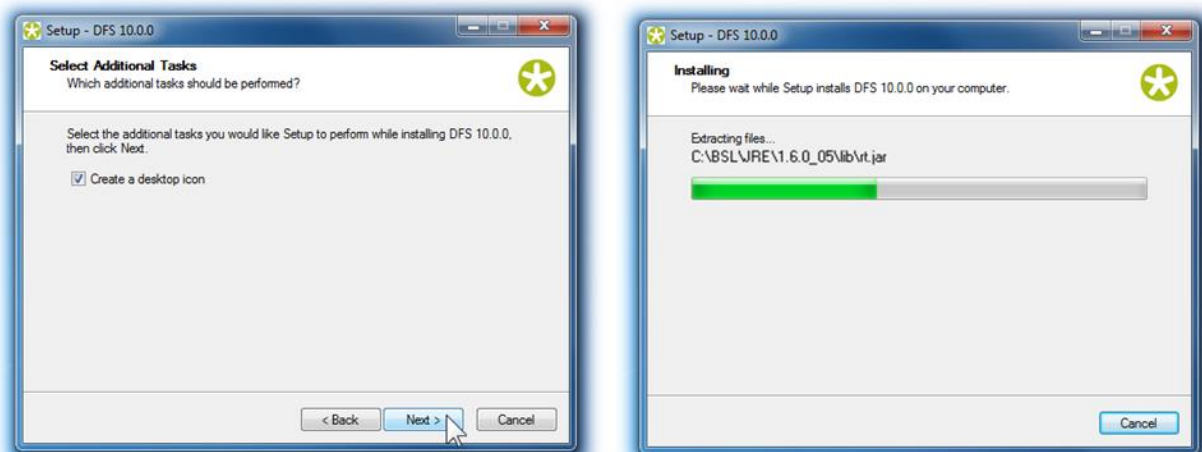
The installation must be carried out as administrator on the local computer (not domain). User rights are usually restricted when logged on to a domain.

After inserting the CD, the start screen is automatically displayed. If the start screen is not displayed, then start the "**setup.exe**" file in the root directory of the CD.

The installation starts with a selection of the installation directory and the dialogue language which will also be used once the software has been installed:

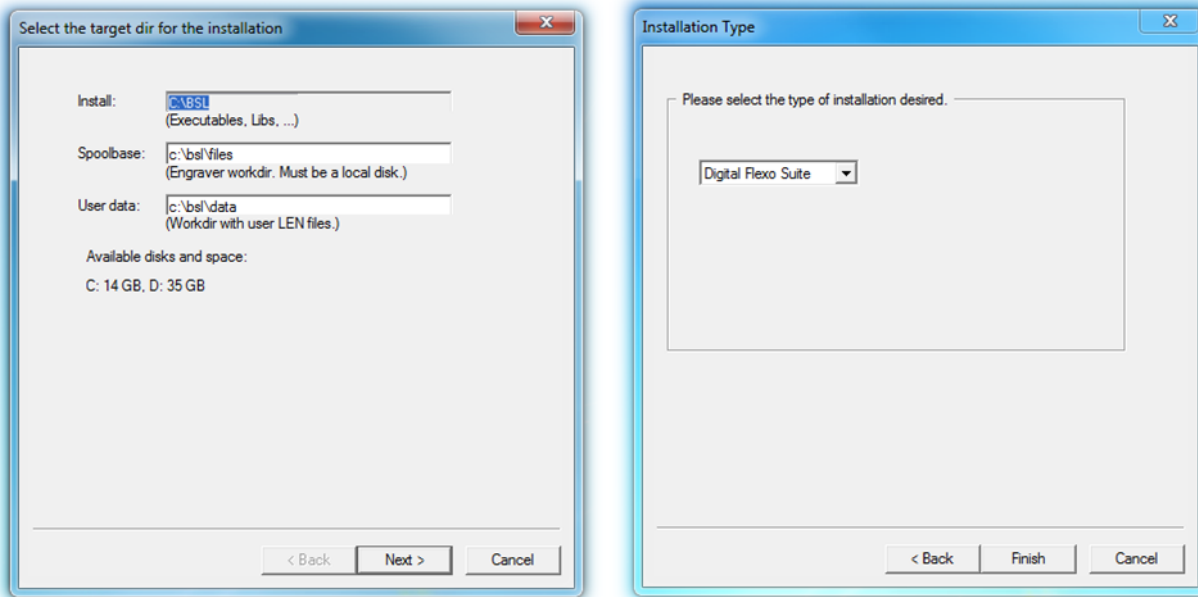


An icon is automatically installed on the user interface and the files are copied into the installation directory:



Digital Flexo Suite 23.11 - Installation

The LEN or TIF files are stored in the "User data:" directory:



The "Digital Flexo Suite" type must be selected for a standard installation.

Finally, the "Station Information Service" is installed automatically:

The "Digital Flexo Suite" requires the "DFS service" which is automatically started along with Windows. The software can be found in the program subfolder "Esko - Digital Flexo Suites".

When an older software is updated, the computer must be restarted so that all programs can be updated.

Windows Service and Ports

The service for the *"Digital Flexo Suite"* is started automatically.

The following programs must be enabled:

- gravurd
- cmotsim
- cdid

The Digital Flexo Suite Service "bsl_cdisvc / Esko DFS" and an http server "bsl_http / Esko HTTP" are installed to allow communication with the CDI.

The following ports are used for communication with the CDI:

- Port 5542: gravurd (TCP)
- Port 5543: cmot (TCP)
- Port 5544: cdid (TCP)
- Port 5544: cdid (UDP)
- Port 5580: http server (TCP)

In the firewall, these ports (in/out) must be released on the DFS as well as on the CDI.