

Curve Pilot PressSync 24.03

User Guide

04 - 2024

Contents

1. Copyright Notice.....	3
1.1. Third Party Licensing.....	4
2. Curve Pilot and PressSync Pilot.....	23
3. What is a PressSync Curve?.....	24
3.1. PressSync Curve Names.....	24
3.2. PressSync Example Curves.....	25
3.3. Minimum and Maximum Values.....	25
4. Finding a PressSync Curve for a Printing Ink.....	28
5. What is a PressSync Curve Set?.....	31
6. Creating a PressSync Curve Set for Your Press.....	32
6.1. Creating an Empty Curve Set.....	32
6.2. Creating a Curve Set from Measurements.....	37
6.2.1. Customizing Your Setup.....	39
6.2.2. Taking Press Runs Measurements.....	49
6.2.3. History.....	60
7. Using PressSync Curves and Curve Sets.....	64
7.1. Using a PressSync Curve in Imaging Engine.....	64
7.2. Using PressSync Curves in Nexus.....	64
7.3. Using a PressSync Curve Set in FlexRip.....	66
7.4. Using PressSync Curve Sets in a Strategy.....	67
8. Viewing Curve Sets in the Preview Combined Curves Tool.....	70
8.1. Previewing a PressSync Curve in a Curve Set.....	70
8.2. Previewing a PressSync Curve Set in a Strategy.....	71
8.3. Previewing a Combination of Curves.....	72
9. Predefined Curve Sets for Printing Standards.....	74

1. Copyright Notice

© Copyright 2024 Esko Software BV, Gent, Belgium

All rights reserved. This material, information and instructions for use contained herein are the property of Esko Software BV. The material, information and instructions are provided on an AS IS basis without warranty of any kind. There are no warranties granted or extended by this document. Furthermore Esko Software BV does not warrant, guarantee or make any representations regarding the use, or the results of the use of the software or the information contained herein. Esko Software BV shall not be liable for any direct, indirect, consequential or incidental damages arising out of the use or inability to use the software or the information contained herein.

The information contained herein is subject to change without notice. Revisions may be issued from time to time to advise of such changes and/or additions.

No part of this document may be reproduced, stored in a data base or retrieval system, or published, in any form or in any way, electronically, mechanically, by print, photoprint, microfilm or any other means without prior written permission from Esko Software BV.

This document supersedes all previous dated versions.

PANTONE[®] Colors displayed in the software application or in the user documentation may not match PANTONE-identified standards. Consult current PANTONE Color Publications for accurate color. PANTONE[®] and other Pantone trademarks are the property of Pantone LLC. © Pantone LLC, 2015

Pantone is the copyright owner of color data and/or software which are licensed to Esko to distribute for use only in combination with Studio Visualizer. PANTONE Color Data and/or Software shall not be copied onto another disk or into memory unless as part of the execution of Studio Visualizer.

This software is based in part on the work of the Independent JPEG Group.

Portions of this software are copyright © 1996-2002 The FreeType Project (www.freetype.org). All rights reserved.

Portions of this software are copyright 2006 Feeling Software, copyright 2005-2006 Autodesk Media Entertainment.

Portions of this software are copyright ©1998-2003 Daniel Veillard. All rights reserved.

Portions of this software are copyright ©1999-2006 The Botan Project. All rights reserved.

Part of the software embedded in this product is gSOAP software. Portions created by gSOAP are Copyright ©2001-2004 Robert A. van Engelen, Genivia inc. All rights reserved.

Portions of this software are copyright ©1998-2008 The OpenSSL Project and ©1995-1998 Eric Young (eay@cryptsoft.com). All rights reserved.

This product includes software developed by the Apache Software Foundation (<http://www.apache.org/>).

Adobe, the Adobe logo, Acrobat, the Acrobat logo, Adobe Creative Suite, Illustrator, InDesign, PDF, Photoshop, PostScript, XMP and the Powered by XMP logo are either registered trademarks or trademarks of Adobe Systems Incorporated in the United States and/or other countries.

Microsoft and the Microsoft logo are registered trademarks of Microsoft Corporation in the United States and other countries.

SolidWorks is a registered trademark of SolidWorks Corporation.

Portions of this software are owned by Spatial Corp. 1986 2003. All Rights Reserved.

JDF and the JDF logo are trademarks of the CIP4 Organisation. Copyright 2001 The International Cooperation for the Integration of Processes in Prepress, Press and Postpress (CIP4). All rights reserved.

The Esko software contains the RSA Data Security, Inc. MD5 Message-Digest Algorithm.

Java and all Java-based trademarks and logos are trademarks or registered trademarks of Oracle corporation in the U.S. and other countries.

Part of this software uses technology by Best Color Technology (EFI). EFI and Bestcolor are registered trademarks of Electronics For Imaging GmbH in the U.S. Patent and Trademark Office.

Contains PowerNest library Copyrighted and Licensed by Alma, 2005 - 2007.

Part of this software uses technology by GlobalVision. ArtProof and ScanProof are registered trademarks of GlobalVision Inc.

Part of this software uses technology by Qoppa Software. Copyright © 2002-Present. All Rights Reserved.

All other product names are trademarks or registered trademarks of their respective owners.

Correspondence regarding this publication should be forwarded to:

Esko Software BV

Raymonde de Larochelaan 13

B - 9051 Gent

info.eur@esko.com

1.1. Third Party Licensing

This product includes lzw-ab.

Copyright (c) David Bryant
All rights reserved.

Redistribution and use in source and binary forms, with or without modification, are permitted provided that the following conditions are met:

- * Redistributions of source code must retain the above copyright notice, this list of conditions and the following disclaimer.
- * Redistributions in binary form must reproduce the above copyright notice, this list of conditions and the following disclaimer in the documentation and/or other materials provided with the distribution.
- * Neither the name of Conifer Software nor the names of its contributors may be used to endorse or promote products derived from this software without specific prior written permission.

THIS SOFTWARE IS PROVIDED BY THE COPYRIGHT HOLDERS AND CONTRIBUTORS "AS IS" AND ANY EXPRESS OR IMPLIED WARRANTIES, INCLUDING, BUT NOT LIMITED TO, THE IMPLIED WARRANTIES OF MERCHANTABILITY AND FITNESS FOR A PARTICULAR PURPOSE ARE DISCLAIMED. IN NO EVENT SHALL THE REGENTS OR CONTRIBUTORS BE LIABLE FOR ANY DIRECT, INDIRECT, INCIDENTAL, SPECIAL, EXEMPLARY, OR CONSEQUENTIAL DAMAGES (INCLUDING, BUT NOT LIMITED TO, PROCUREMENT OF SUBSTITUTE GOODS OR SERVICES; LOSS OF USE, DATA, OR PROFITS; OR BUSINESS INTERRUPTION) HOWEVER CAUSED AND ON ANY THEORY OF LIABILITY, WHETHER IN CONTRACT, STRICT LIABILITY, OR TORT (INCLUDING NEGLIGENCE OR OTHERWISE) ARISING IN ANY WAY OUT OF THE USE OF THIS SOFTWARE, EVEN IF ADVISED OF THE POSSIBILITY OF SUCH DAMAGE.

This product includes ICC Profiles.

Some ICC Profiles were created by FFEI Ltd. (www.ffei.co.uk) using Fujifilm ColourKit Profiler Suite (www.colourprofiling.com)

This product includes ICC Profiles.

Some ICC profiles are copyright (C) by European Color Initiative, www.eci.org

This product includes ICC Profiles.

Some ICC profiles are copyright (C) of WAN-IFRA, www.wan-ifra.org

This product includes ICC Profiles.

Some ICC profiles are copyright (C) IDEAlliance(R). G7(R), GRACol(R) and SWOP(R) are all registered trademarks of IDEAlliance(C).

This product includes PANTONE Color Libraries.

PANTONE® and other Pantone trademarks are the property of Pantone LLC. Pantone is a wholly owned subsidiary of X-Rite, Incorporated.

This product includes curl.

COPYRIGHT AND PERMISSION NOTICE

Copyright (c) 1996 - 2023, Daniel Stenberg, <daniel@haxx.se>, and many contributors, see the THANKS file.

All rights reserved.

Permission to use, copy, modify, and distribute this software for any purpose with or without fee is hereby granted, provided that the above copyright notice and this permission notice appear in all copies.

THE SOFTWARE IS PROVIDED "AS IS", WITHOUT WARRANTY OF ANY KIND, EXPRESS OR IMPLIED, INCLUDING BUT NOT LIMITED TO THE WARRANTIES OF MERCHANTABILITY, FITNESS FOR A PARTICULAR PURPOSE AND NONINFRINGEMENT OF THIRD PARTY RIGHTS. IN NO EVENT SHALL THE AUTHORS OR COPYRIGHT HOLDERS BE LIABLE FOR ANY CLAIM, DAMAGES OR OTHER LIABILITY, WHETHER IN AN ACTION OF CONTRACT, TORT OR OTHERWISE, ARISING FROM, OUT OF OR IN CONNECTION WITH THE SOFTWARE OR THE USE OR OTHER DEALINGS IN THE SOFTWARE.

Except as contained in this notice, the name of a copyright holder shall not be used in advertising or otherwise to promote the sale, use or other dealings in this Software without prior written authorization of the copyright holder.

This product includes LibTIFF.

Copyright (c) 1988-1997 Sam Leffler
Copyright (c) 1991-1997 Silicon Graphics, Inc.

Permission to use, copy, modify, distribute, and sell this software and its documentation for any purpose is hereby granted without fee, provided that (i) the above copyright notices and this permission notice appear in all copies of the software and related documentation, and (ii) the names of Sam Leffler and Silicon Graphics may not be used in any advertising or publicity relating to the software without the specific, prior written permission of Sam Leffler and Silicon Graphics.

THE SOFTWARE IS PROVIDED "AS-IS" AND WITHOUT WARRANTY OF ANY KIND, EXPRESS, IMPLIED OR OTHERWISE, INCLUDING WITHOUT LIMITATION, ANY WARRANTY OF MERCHANTABILITY OR FITNESS FOR A PARTICULAR PURPOSE.

IN NO EVENT SHALL SAM LEFFLER OR SILICON GRAPHICS BE LIABLE FOR

ANY SPECIAL, INCIDENTAL, INDIRECT OR CONSEQUENTIAL DAMAGES OF ANY KIND, OR ANY DAMAGES WHATSOEVER RESULTING FROM LOSS OF USE, DATA OR PROFITS, WHETHER OR NOT ADVISED OF THE POSSIBILITY OF DAMAGE, AND ON ANY THEORY OF LIABILITY, ARISING OUT OF OR IN CONNECTION WITH THE USE OR PERFORMANCE OF THIS SOFTWARE.

 This product includes FreeType.

Portions of this software are copyright (C) 2014 The FreeType Project (www.freetype.org) licensed under the Freetype License. All rights reserved.

 This product includes ICU.

Copyright (c) 1991-2023 Unicode, Inc. All rights reserved. Distributed under the Terms of Use in <https://www.unicode.org/copyright.html>.

Permission is hereby granted, free of charge, to any person obtaining a copy of the Unicode data files and any associated documentation (the "Data Files") or Unicode software and any associated documentation (the "Software") to deal in the Data Files or Software without restriction, including without limitation the rights to use, copy, modify, merge, publish, distribute, and/or sell copies of the Data Files or Software, and to permit persons to whom the Data Files or Software are furnished to do so, provided that either (a) this copyright and permission notice appear with all copies of the Data Files or Software, or (b) this copyright and permission notice appear in associated Documentation.

THE DATA FILES AND SOFTWARE ARE PROVIDED "AS IS", WITHOUT WARRANTY OF ANY KIND, EXPRESS OR IMPLIED, INCLUDING BUT NOT LIMITED TO THE WARRANTIES OF MERCHANTABILITY, FITNESS FOR A PARTICULAR PURPOSE AND NONINFRINGEMENT OF THIRD PARTY RIGHTS. IN NO EVENT SHALL THE COPYRIGHT HOLDER OR HOLDERS INCLUDED IN THIS NOTICE BE LIABLE FOR ANY CLAIM, OR ANY SPECIAL INDIRECT OR CONSEQUENTIAL DAMAGES, OR ANY DAMAGES WHATSOEVER RESULTING FROM LOSS OF USE, DATA OR PROFITS, WHETHER IN AN ACTION OF CONTRACT, NEGLIGENCE OR OTHER TORTIOUS ACTION, ARISING OUT OF OR IN CONNECTION WITH THE USE OR PERFORMANCE OF THE DATA FILES OR SOFTWARE.

 Chinese/Japanese Word Break Dictionary Data (cjdict.txt)

```
# The Google Chrome software developed by Google is licensed under
# the BSD license. Other software included in this distribution is
# provided under other licenses, as set forth below.
#
# The BSD License
# http://opensource.org/licenses/bsd-license.php
# Copyright (C) 2006-2008, Google Inc.
#
# All rights reserved.
#
# Redistribution and use in source and binary forms, with or without
# modification, are permitted provided that the following conditions are met:
#
# Redistributions of source code must retain the above copyright notice,
# this list of conditions and the following disclaimer.
# Redistributions in binary form must reproduce the above
# copyright notice, this list of conditions and the following
# disclaimer in the documentation and/or other materials provided with
# the distribution.
# Neither the name of Google Inc. nor the names of its
# contributors may be used to endorse or promote products derived from
# this software without specific prior written permission.
#
# THIS SOFTWARE IS PROVIDED BY THE COPYRIGHT HOLDERS AND
# CONTRIBUTORS "AS IS" AND ANY EXPRESS OR IMPLIED WARRANTIES,
# INCLUDING, BUT NOT LIMITED TO, THE IMPLIED WARRANTIES OF
# MERCHANTABILITY AND FITNESS FOR A PARTICULAR PURPOSE ARE
```

```

# DISCLAIMED. IN NO EVENT SHALL THE COPYRIGHT OWNER OR CONTRIBUTORS BE
# LIABLE FOR ANY DIRECT, INDIRECT, INCIDENTAL, SPECIAL, EXEMPLARY, OR
# CONSEQUENTIAL DAMAGES (INCLUDING, BUT NOT LIMITED TO, PROCUREMENT OF
# SUBSTITUTE GOODS OR SERVICES; LOSS OF USE, DATA, OR PROFITS; OR
# BUSINESS INTERRUPTION) HOWEVER CAUSED AND ON ANY THEORY OF
# LIABILITY, WHETHER IN CONTRACT, STRICT LIABILITY, OR TORT (INCLUDING
# NEGLIGENCE OR OTHERWISE) ARISING IN ANY WAY OUT OF THE USE OF THIS
# SOFTWARE, EVEN IF ADVISED OF THE POSSIBILITY OF SUCH DAMAGE.
#
#
# The word list in cjdict.txt are generated by combining three word lists
# listed below with further processing for compound word breaking. The
# frequency is generated with an iterative training against Google web
# corpora.
#
# * Libtabe (Chinese)
#   - https://sourceforge.net/project/?group\_id=1519
#   - Its license terms and conditions are shown below.
#
# * IPADIC (Japanese)
#   - http://chasen.aist-nara.ac.jp/chasen/distribution.html
#   - Its license terms and conditions are shown below.
#
# -----COPYING.libtabe ---- BEGIN-----
#
# /*
#  * Copyright (c) 1999 TaBE Project.
#  * Copyright (c) 1999 Pai-Hsiang Hsiao.
#  * All rights reserved.
#  *
#  * Redistribution and use in source and binary forms, with or without
#  * modification, are permitted provided that the following conditions
#  * are met:
#  *
#  * . Redistributions of source code must retain the above copyright
#  * notice, this list of conditions and the following disclaimer.
#  * . Redistributions in binary form must reproduce the above copyright
#  * notice, this list of conditions and the following disclaimer in
#  * the documentation and/or other materials provided with the
#  * distribution.
#  * . Neither the name of the TaBE Project nor the names of its
#  * contributors may be used to endorse or promote products derived
#  * from this software without specific prior written permission.
#  *
#  * THIS SOFTWARE IS PROVIDED BY THE COPYRIGHT HOLDERS AND CONTRIBUTORS
#  * "AS IS" AND ANY EXPRESS OR IMPLIED WARRANTIES, INCLUDING, BUT NOT
#  * LIMITED TO, THE IMPLIED WARRANTIES OF MERCHANTABILITY AND FITNESS
#  * FOR A PARTICULAR PURPOSE ARE DISCLAIMED. IN NO EVENT SHALL THE
#  * REGENTS OR CONTRIBUTORS BE LIABLE FOR ANY DIRECT, INDIRECT,
#  * INCIDENTAL, SPECIAL, EXEMPLARY, OR CONSEQUENTIAL DAMAGES
#  * (INCLUDING, BUT NOT LIMITED TO, PROCUREMENT OF SUBSTITUTE GOODS OR
#  * SERVICES; LOSS OF USE, DATA, OR PROFITS; OR BUSINESS INTERRUPTION)
#  * HOWEVER CAUSED AND ON ANY THEORY OF LIABILITY, WHETHER IN CONTRACT,
#  * STRICT LIABILITY, OR TORT (INCLUDING NEGLIGENCE OR OTHERWISE)
#  * ARISING IN ANY WAY OUT OF THE USE OF THIS SOFTWARE, EVEN IF ADVISED
#  * OF THE POSSIBILITY OF SUCH DAMAGE.
# */
#
# /*
#  * Copyright (c) 1999 Computer Systems and Communication Lab,
#  * Institute of Information Science, Academia
#  * Sinica. All rights reserved.
#  *
#  * Redistribution and use in source and binary forms, with or without
#  * modification, are permitted provided that the following conditions
#  * are met:
#  *
#  * . Redistributions of source code must retain the above copyright
#  * notice, this list of conditions and the following disclaimer.
#  * . Redistributions in binary form must reproduce the above copyright
#  * notice, this list of conditions and the following disclaimer in
#  * the documentation and/or other materials provided with the
#  * distribution.
#  * . Neither the name of the Computer Systems and Communication Lab
#  * nor the names of its contributors may be used to endorse or
#  * promote products derived from this software without specific
#  * prior written permission.

```

```

# *
# * THIS SOFTWARE IS PROVIDED BY THE COPYRIGHT HOLDERS AND CONTRIBUTORS
# * "AS IS" AND ANY EXPRESS OR IMPLIED WARRANTIES, INCLUDING, BUT NOT
# * LIMITED TO, THE IMPLIED WARRANTIES OF MERCHANTABILITY AND FITNESS
# * FOR A PARTICULAR PURPOSE ARE DISCLAIMED. IN NO EVENT SHALL THE
# * REGENTS OR CONTRIBUTORS BE LIABLE FOR ANY DIRECT, INDIRECT,
# * INCIDENTAL, SPECIAL, EXEMPLARY, OR CONSEQUENTIAL DAMAGES
# * (INCLUDING, BUT NOT LIMITED TO, PROCUREMENT OF SUBSTITUTE GOODS OR
# * SERVICES; LOSS OF USE, DATA, OR PROFITS; OR BUSINESS INTERRUPTION)
# * HOWEVER CAUSED AND ON ANY THEORY OF LIABILITY, WHETHER IN CONTRACT,
# * STRICT LIABILITY, OR TORT (INCLUDING NEGLIGENCE OR OTHERWISE)
# * ARISING IN ANY WAY OUT OF THE USE OF THIS SOFTWARE, EVEN IF ADVISED
# * OF THE POSSIBILITY OF SUCH DAMAGE.
# */
#
# Copyright 1996 Chih-Hao Tsai @ Beckman Institute,
# University of Illinois
# c-tsai4@uiuc.edu http://casper.beckman.uiuc.edu/~c-tsai4
#
# -----COPYING.libtabe-----END-----
#
# -----COPYING.ipadic-----BEGIN-----
#
# Copyright 2000, 2001, 2002, 2003 Nara Institute of Science
# and Technology. All Rights Reserved.
#
# Use, reproduction, and distribution of this software is permitted.
# Any copy of this software, whether in its original form or modified,
# must include both the above copyright notice and the following
# paragraphs.
#
# Nara Institute of Science and Technology (NAIST),
# the copyright holders, disclaims all warranties with regard to this
# software, including all implied warranties of merchantability and
# fitness, in no event shall NAIST be liable for
# any special, indirect or consequential damages or any damages
# whatsoever resulting from loss of use, data or profits, whether in an
# action of contract, negligence or other tortuous action, arising out
# of or in connection with the use or performance of this software.
#
# A large portion of the dictionary entries
# originate from ICOT Free Software. The following conditions for ICOT
# Free Software applies to the current dictionary as well.
#
# Each User may also freely distribute the Program, whether in its
# original form or modified, to any third party or parties, PROVIDED
# that the provisions of Section 3 ("NO WARRANTY") will ALWAYS appear
# on, or be attached to, the Program, which is distributed substantially
# in the same form as set out herein and that such intended
# distribution, if actually made, will neither violate or otherwise
# contravene any of the laws and regulations of the countries having
# jurisdiction over the User or the intended distribution itself.
#
# NO WARRANTY
#
# The program was produced on an experimental basis in the course of the
# research and development conducted during the project and is provided
# to users as so produced on an experimental basis. Accordingly, the
# program is provided without any warranty whatsoever, whether express,
# implied, statutory or otherwise. The term "warranty" used herein
# includes, but is not limited to, any warranty of the quality,
# performance, merchantability and fitness for a particular purpose of
# the program and the nonexistence of any infringement or violation of
# any right of any third party.
#
# Each user of the program will agree and understand, and be deemed to
# have agreed and understood, that there is no warranty whatsoever for
# the program and, accordingly, the entire risk arising from or
# otherwise connected with the program is assumed by the user.
#
# Therefore, neither ICOT, the copyright holder, or any other
# organization that participated in or was otherwise related to the
# development of the program and their respective officials, directors,
# officers and other employees shall be held liable for any and all
# damages, including, without limitation, general, special, incidental
# and consequential damages, arising out of or otherwise in connection

```



```
# with the use or inability to use the program or any product, material
# or result produced or otherwise obtained by using the program,
# regardless of whether they have been advised of, or otherwise had
# knowledge of, the possibility of such damages at any time during the
# project or thereafter. Each user will be deemed to have agreed to the
# foregoing by his or her commencement of use of the program. The term
# "use" as used herein includes, but is not limited to, the use,
# modification, copying and distribution of the program and the
# production of secondary products from the program.
#
# In the case where the program, whether in its original form or
# modified, was distributed or delivered to or received by a user from
# any person, organization or entity other than ICOT, unless it makes or
# grants independently of ICOT any specific warranty to the user in
# writing, such person, organization or entity, will also be exempted
# from and not be held liable to the user for any such damages as noted
# above as far as the program is concerned.
#
# -----COPYING.ipadic-----END-----
```

Lao Word Break Dictionary Data (laodict.txt)

```
# Copyright (C) 2016 and later: Unicode, Inc. and others.
# License & terms of use: http://www.unicode.org/copyright.html
# Copyright (c) 2015 International Business Machines Corporation
# and others. All Rights Reserved.
#
# Project: https://github.com/rober42539/lao-dictionary
# Dictionary: https://github.com/rober42539/lao-dictionary/laodict.txt
# License: https://github.com/rober42539/lao-dictionary/LICENSE.txt
# (copied below)
#
# This file is derived from the above dictionary version of Nov 22, 2020
#
# Copyright (C) 2013 Brian Eugene Wilson, Robert Martin Campbell.
# All rights reserved.
#
# Redistribution and use in source and binary forms, with or without
# modification, are permitted provided that the following conditions are met:
#
# Redistributions of source code must retain the above copyright notice, this
# list of conditions and the following disclaimer. Redistributions in binary
# form must reproduce the above copyright notice, this list of conditions and
# the following disclaimer in the documentation and/or other materials
# provided with the distribution.
#
# THIS SOFTWARE IS PROVIDED BY THE COPYRIGHT HOLDERS AND CONTRIBUTORS
# "AS IS" AND ANY EXPRESS OR IMPLIED WARRANTIES, INCLUDING, BUT NOT
# LIMITED TO, THE IMPLIED WARRANTIES OF MERCHANTABILITY AND FITNESS
# FOR A PARTICULAR PURPOSE ARE DISCLAIMED. IN NO EVENT SHALL THE
# COPYRIGHT HOLDER OR CONTRIBUTORS BE LIABLE FOR ANY DIRECT,
# INDIRECT, INCIDENTAL, SPECIAL, EXEMPLARY, OR CONSEQUENTIAL DAMAGES
# (INCLUDING, BUT NOT LIMITED TO, PROCUREMENT OF SUBSTITUTE GOODS OR
# SERVICES; LOSS OF USE, DATA, OR PROFITS; OR BUSINESS INTERRUPTION)
# HOWEVER CAUSED AND ON ANY THEORY OF LIABILITY, WHETHER IN CONTRACT,
# STRICT LIABILITY, OR TORT (INCLUDING NEGLIGENCE OR OTHERWISE)
# ARISING IN ANY WAY OUT OF THE USE OF THIS SOFTWARE, EVEN IF ADVISED
# OF THE POSSIBILITY OF SUCH DAMAGE.
#
# -----
```

Burmese Word Break Dictionary Data (burmesedict.txt)

```
# Copyright (c) 2014 International Business Machines Corporation
# and others. All Rights Reserved.
#
# This list is part of a project hosted at:
# github.com/kanyawtech/myanmar-karen-word-lists
#
# -----
# Copyright (c) 2013, LeRoy Benjamin Sharon
# All rights reserved.
#
# Redistribution and use in source and binary forms, with or without
```

```

# modification, are permitted provided that the following conditions
# are met: Redistributions of source code must retain the above
# copyright notice, this list of conditions and the following
# disclaimer. Redistributions in binary form must reproduce the
# above copyright notice, this list of conditions and the following
# disclaimer in the documentation and/or other materials provided
# with the distribution.
#
#   Neither the name Myanmar Karen Word Lists, nor the names of its
#   contributors may be used to endorse or promote products derived
#   from this software without specific prior written permission.
#
# THIS SOFTWARE IS PROVIDED BY THE COPYRIGHT HOLDERS AND
# CONTRIBUTORS "AS IS" AND ANY EXPRESS OR IMPLIED WARRANTIES,
# INCLUDING, BUT NOT LIMITED TO, THE IMPLIED WARRANTIES OF
# MERCHANTABILITY AND FITNESS FOR A PARTICULAR PURPOSE ARE
# DISCLAIMED. IN NO EVENT SHALL THE COPYRIGHT HOLDER OR CONTRIBUTORS
# BE LIABLE FOR ANY DIRECT, INDIRECT, INCIDENTAL, SPECIAL,
# EXEMPLARY, OR CONSEQUENTIAL DAMAGES (INCLUDING, BUT NOT LIMITED
# TO, PROCUREMENT OF SUBSTITUTE GOODS OR SERVICES; LOSS OF USE,
# DATA, OR PROFITS; OR BUSINESS INTERRUPTION) HOWEVER CAUSED AND ON
# ANY THEORY OF LIABILITY, WHETHER IN CONTRACT, STRICT LIABILITY, OR
# TORT (INCLUDING NEGLIGENCE OR OTHERWISE) ARISING IN ANY WAY OUT OF
# THE USE OF THIS SOFTWARE, EVEN IF ADVISED OF THE POSSIBILITY OF
# SUCH DAMAGE.
# -----

```

Time Zone Database

ICU uses the public domain data and code derived from Time Zone Database for its time zone support. The ownership of the TZ database is explained in BCP 175: Procedure for Maintaining the Time Zone Database section 7.

```

# 7. Database Ownership
#
#   The TZ database itself is not an IETF Contribution or an IETF
#   document. Rather it is a pre-existing and regularly updated work
#   that is in the public domain, and is intended to remain in the
#   public domain. Therefore, BCPs 78 [RFC5378] and 79 [RFC3979] do
#   not apply to the TZ Database or contributions that individuals make
#   to it. Should any claims be made and substantiated against the TZ
#   Database, the organization that is providing the IANA
#   Considerations defined in this RFC, under the memorandum of
#   understanding with the IETF, currently ICANN, may act in accordance
#   with all competent court orders. No ownership claims will be made
#   by ICANN or the IETF Trust on the database or the code. Any person
#   making a contribution to the database or code waives all rights to
#   future claims in that contribution or in the TZ Database.
# -----

```

Google double-conversion

Copyright 2006-2011, the V8 project authors. All rights reserved. Redistribution and use in source and binary forms, with or without modification, are permitted provided that the following conditions are met:

- * Redistributions of source code must retain the above copyright notice, this list of conditions and the following disclaimer.
- * Redistributions in binary form must reproduce the above copyright notice, this list of conditions and the following disclaimer in the documentation and/or other materials provided with the distribution.
- * Neither the name of Google Inc. nor the names of its contributors may be used to endorse or promote products derived from this software without specific prior written permission.

THIS SOFTWARE IS PROVIDED BY THE COPYRIGHT HOLDERS AND CONTRIBUTORS "AS IS" AND ANY EXPRESS OR IMPLIED WARRANTIES, INCLUDING, BUT NOT LIMITED TO, THE IMPLIED WARRANTIES OF MERCHANTABILITY AND FITNESS FOR A PARTICULAR PURPOSE ARE DISCLAIMED. IN NO EVENT SHALL THE COPYRIGHT OWNER OR CONTRIBUTORS BE LIABLE FOR ANY DIRECT, INDIRECT, INCIDENTAL, SPECIAL, EXEMPLARY, OR CONSEQUENTIAL DAMAGES (INCLUDING, BUT NOT

LIMITED TO, PROCUREMENT OF SUBSTITUTE GOODS OR SERVICES; LOSS OF USE, DATA, OR PROFITS; OR BUSINESS INTERRUPTION) HOWEVER CAUSED AND ON ANY THEORY OF LIABILITY, WHETHER IN CONTRACT, STRICT LIABILITY, OR TORT (INCLUDING NEGLIGENCE OR OTHERWISE) ARISING IN ANY WAY OUT OF THE USE OF THIS SOFTWARE, EVEN IF ADVISED OF THE POSSIBILITY OF SUCH DAMAGE.

File: alocal.m4 (only for ICU4C)
Section: pkg.m4 - Macros to locate and utilise pkg-config.

Copyright (c) 2004 Scott James Remnant <scott@netsplit.com>.
Copyright (c) 2012-2015 Dan Nicholson <dbn.lists@gmail.com>

This program is free software; you can redistribute it and/or modify it under the terms of the GNU General Public License as published by the Free Software Foundation; either version 2 of the License, or (at your option) any later version.

This program is distributed in the hope that it will be useful, but WITHOUT ANY WARRANTY; without even the implied warranty of MERCHANTABILITY or FITNESS FOR A PARTICULAR PURPOSE. See the GNU General Public License for more details.

You should have received a copy of the GNU General Public License along with this program; if not, write to the Free Software Foundation, Inc., 59 Temple Place - Suite 330, Boston, MA 02111-1307, USA.

As a special exception to the GNU General Public License, if you distribute this file as part of a program that contains a configuration script generated by Autoconf, you may include it under the same distribution terms that you use for the rest of that program.

(The condition for the exception is fulfilled because ICU4C includes a configuration script generated by Autoconf, namely the `configure` script.)

File: config.guess (only for ICU4C)

This file is free software; you can redistribute it and/or modify it under the terms of the GNU General Public License as published by the Free Software Foundation; either version 3 of the License, or (at your option) any later version.

This program is distributed in the hope that it will be useful, but WITHOUT ANY WARRANTY; without even the implied warranty of MERCHANTABILITY or FITNESS FOR A PARTICULAR PURPOSE. See the GNU General Public License for more details.

You should have received a copy of the GNU General Public License along with this program; if not, see <<https://www.gnu.org/licenses/>>.

As a special exception to the GNU General Public License, if you distribute this file as part of a program that contains a configuration script generated by Autoconf, you may include it under the same distribution terms that you use for the rest of that program. This Exception is an additional permission under section 7 of the GNU General Public License, version 3 ("GPLv3").

(The condition for the exception is fulfilled because ICU4C includes a configuration script generated by Autoconf, namely the `configure` script.)

File: install-sh (only for ICU4C)

Copyright 1991 by the Massachusetts Institute of Technology

Permission to use, copy, modify, distribute, and sell this software and its documentation for any purpose is hereby granted without fee, provided that the above copyright notice appear in all copies and that both that copyright notice and this permission notice appear in supporting documentation, and that the name of M.I.T. not be used in advertising or publicity pertaining to distribution of the software without specific, written prior permission. M.I.T. makes no representations about the suitability of this software for any purpose. It is provided "as is" without express or implied warranty.

This product includes JBIG2Lib.

Portions of this product copyrights (C) 2002 Glyph & Cog, LLC.

This product includes JPEGLib.
This software is copyright (C) 1991-2016, Thomas G. Lane, Guido Vollbeding.
All Rights Reserved.

This software is based in part on the work of the Independent JPEG Group.

This product includes Little CMS.

Little CMS
Copyright (c) 1998-2020 Marti Maria Saguer

Permission is hereby granted, free of charge, to any person obtaining a copy of this software and associated documentation files (the "Software"), to deal in the Software without restriction, including without limitation the rights to use, copy, modify, merge, publish, distribute, sublicense, and/or sell copies of the Software, and to permit persons to whom the Software is furnished to do so, subject to the following conditions:

The above copyright notice and this permission notice shall be included in all copies or substantial portions of the Software.

THE SOFTWARE IS PROVIDED "AS IS", WITHOUT WARRANTY OF ANY KIND, EXPRESS OR IMPLIED, INCLUDING BUT NOT LIMITED TO THE WARRANTIES OF MERCHANTABILITY, FITNESS FOR A PARTICULAR PURPOSE AND NONINFRINGEMENT. IN NO EVENT SHALL THE AUTHORS OR COPYRIGHT HOLDERS BE LIABLE FOR ANY CLAIM, DAMAGES OR OTHER LIABILITY, WHETHER IN AN ACTION OF CONTRACT, TORT OR OTHERWISE, ARISING FROM, OUT OF OR IN CONNECTION WITH THE SOFTWARE OR THE USE OR OTHER DEALINGS IN THE SOFTWARE.

This product includes libxml2.

Copyright (C) 1998-2012 Daniel Veillard. All Rights Reserved.

Permission is hereby granted, free of charge, to any person obtaining a copy of this software and associated documentation files (the "Software"), to deal in the Software without restriction, including without limitation the rights to use, copy, modify, merge, publish, distribute, sublicense, and/or sell copies of the Software, and to permit persons to whom the Software is furnished to do so, subject to the following conditions:

The above copyright notice and this permission notice shall be included in all copies or substantial portions of the Software.

THE SOFTWARE IS PROVIDED "AS IS", WITHOUT WARRANTY OF ANY KIND, EXPRESS OR IMPLIED, INCLUDING BUT NOT LIMITED TO THE WARRANTIES OF MERCHANTABILITY, FITNESS FOR A PARTICULAR PURPOSE AND NONINFRINGEMENT. IN NO EVENT SHALL THE AUTHORS OR COPYRIGHT HOLDERS BE LIABLE FOR ANY CLAIM, DAMAGES OR OTHER LIABILITY, WHETHER IN AN ACTION OF CONTRACT, TORT OR OTHERWISE, ARISING FROM, OUT OF OR IN CONNECTION WITH THE SOFTWARE OR THE USE OR OTHER DEALINGS IN THE SOFTWARE.

This product includes OpenJDK.

The GNU General Public License (GPL)

Version 2, June 1991

Copyright (C) 1989, 1991 Free Software Foundation, Inc.
51 Franklin Street, Fifth Floor, Boston, MA 02110-1301 USA

Everyone is permitted to copy and distribute verbatim copies of this license document, but changing it is not allowed.

Preamble

The licenses for most software are designed to take away your freedom to share and change it. By contrast, the GNU General Public License is intended to guarantee your freedom to share and change free software--to make sure the software is free for all its users. This General Public License applies to most of the Free Software Foundation's software and to any other program whose authors commit to using it. (Some other Free Software Foundation software is covered by the GNU Library General Public License instead.) You can apply it to your programs, too.

When we speak of free software, we are referring to freedom, not price. Our General Public Licenses are designed to make sure that you have the freedom to distribute copies of free software (and charge for this service if you wish), that you receive source code or can get it if you want it, that you can change the software or use pieces of it in new free programs; and that you know you can do these things.

To protect your rights, we need to make restrictions that forbid anyone to deny you these rights or to ask you to surrender the rights. These restrictions translate to certain responsibilities for you if you distribute copies of the software, or if you modify it.

For example, if you distribute copies of such a program, whether gratis or for a fee, you must give the recipients all the rights that you have. You must make sure that they, too, receive or can get the source code. And you must show them these terms so they know their rights.

We protect your rights with two steps: (1) copyright the software, and (2) offer you this license which gives you legal permission to copy, distribute and/or modify the software.

Also, for each author's protection and ours, we want to make certain that everyone understands that there is no warranty for this free software. If the software is modified by someone else and passed on, we want its recipients to know that what they have is not the original, so that any problems introduced by others will not reflect on the original authors' reputations.

Finally, any free program is threatened constantly by software patents. We wish to avoid the danger that redistributors of a free program will individually obtain patent licenses, in effect making the program proprietary. To prevent this, we have made it clear that any patent must be licensed for everyone's free use or not licensed at all.

The precise terms and conditions for copying, distribution and modification follow.

TERMS AND CONDITIONS FOR COPYING, DISTRIBUTION AND MODIFICATION

0. This License applies to any program or other work which contains a notice placed by the copyright holder saying it may be distributed under the terms of this General Public License. The "Program", below, refers to any such program or work, and a "work based on the Program" means either the Program or any derivative work under copyright law: that is to say, a work containing the Program or a portion of it, either verbatim or with modifications and/or translated into another language. (Hereinafter, translation is included without limitation in the term "modification".) Each licensee is addressed as "you".

Activities other than copying, distribution and modification are not covered by this License; they are outside its scope. The act of running the Program is not restricted, and the output from the Program is covered only if its contents constitute a work based on the Program (independent of having been made by running the Program). Whether that is true depends on what the Program does.

1. You may copy and distribute verbatim copies of the Program's source code as

you receive it, in any medium, provided that you conspicuously and appropriately publish on each copy an appropriate copyright notice and disclaimer of warranty; keep intact all the notices that refer to this License and to the absence of any warranty; and give any other recipients of the Program a copy of this License along with the Program.

You may charge a fee for the physical act of transferring a copy, and you may at your option offer warranty protection in exchange for a fee.

2. You may modify your copy or copies of the Program or any portion of it, thus forming a work based on the Program, and copy and distribute such modifications or work under the terms of Section 1 above, provided that you also meet all of these conditions:

- a) You must cause the modified files to carry prominent notices stating that you changed the files and the date of any change.
- b) You must cause any work that you distribute or publish, that in whole or in part contains or is derived from the Program or any part thereof, to be licensed as a whole at no charge to all third parties under the terms of this License.
- c) If the modified program normally reads commands interactively when run, you must cause it, when started running for such interactive use in the most ordinary way, to print or display an announcement including an appropriate copyright notice and a notice that there is no warranty (or else, saying that you provide a warranty) and that users may redistribute the program under these conditions, and telling the user how to view a copy of this License. (Exception: if the Program itself is interactive but does not normally print such an announcement, your work based on the Program is not required to print an announcement.)

These requirements apply to the modified work as a whole. If identifiable sections of that work are not derived from the Program, and can be reasonably considered independent and separate works in themselves, then this License, and its terms, do not apply to those sections when you distribute them as separate works. But when you distribute the same sections as part of a whole which is a work based on the Program, the distribution of the whole must be on the terms of this License, whose permissions for other licensees extend to the entire whole, and thus to each and every part regardless of who wrote it.

Thus, it is not the intent of this section to claim rights or contest your rights to work written entirely by you; rather, the intent is to exercise the right to control the distribution of derivative or collective works based on the Program.

In addition, mere aggregation of another work not based on the Program with the Program (or with a work based on the Program) on a volume of a storage or distribution medium does not bring the other work under the scope of this License.

3. You may copy and distribute the Program (or a work based on it, under Section 2) in object code or executable form under the terms of Sections 1 and 2 above provided that you also do one of the following:

- a) Accompany it with the complete corresponding machine-readable source code, which must be distributed under the terms of Sections 1 and 2 above on a medium customarily used for software interchange; or,
- b) Accompany it with a written offer, valid for at least three years, to give any third party, for a charge no more than your cost of physically performing source distribution, a complete machine-readable copy of the corresponding source code, to be distributed under the terms of Sections 1 and 2 above on a medium customarily used for software interchange; or,
- c) Accompany it with the information you received as to the offer to distribute corresponding source code. (This alternative is allowed only for noncommercial distribution and only if you received the program in object code or executable form with such an offer, in accord with Subsection b above.)

The source code for a work means the preferred form of the work for making modifications to it. For an executable work, complete source code means all the source code for all modules it contains, plus any associated interface definition files, plus the scripts used to control compilation and installation of the executable. However, as a special exception, the source code distributed need not include anything that is normally distributed (in either

source or binary form) with the major components (compiler, kernel, and so on) of the operating system on which the executable runs, unless that component itself accompanies the executable.

If distribution of executable or object code is made by offering access to copy from a designated place, then offering equivalent access to copy the source code from the same place counts as distribution of the source code, even though third parties are not compelled to copy the source along with the object code.

4. You may not copy, modify, sublicense, or distribute the Program except as expressly provided under this License. Any attempt otherwise to copy, modify, sublicense or distribute the Program is void, and will automatically terminate your rights under this License. However, parties who have received copies, or rights, from you under this License will not have their licenses terminated so long as such parties remain in full compliance.

5. You are not required to accept this License, since you have not signed it. However, nothing else grants you permission to modify or distribute the Program or its derivative works. These actions are prohibited by law if you do not accept this License. Therefore, by modifying or distributing the Program (or any work based on the Program), you indicate your acceptance of this License to do so, and all its terms and conditions for copying, distributing or modifying the Program or works based on it.

6. Each time you redistribute the Program (or any work based on the Program), the recipient automatically receives a license from the original licensor to copy, distribute or modify the Program subject to these terms and conditions. You may not impose any further restrictions on the recipients' exercise of the rights granted herein. You are not responsible for enforcing compliance by third parties to this License.

7. If, as a consequence of a court judgment or allegation of patent infringement or for any other reason (not limited to patent issues), conditions are imposed on you (whether by court order, agreement or otherwise) that contradict the conditions of this License, they do not excuse you from the conditions of this License. If you cannot distribute so as to satisfy simultaneously your obligations under this License and any other pertinent obligations, then as a consequence you may not distribute the Program at all. For example, if a patent license would not permit royalty-free redistribution of the Program by all those who receive copies directly or indirectly through you, then the only way you could satisfy both it and this License would be to refrain entirely from distribution of the Program.

If any portion of this section is held invalid or unenforceable under any particular circumstance, the balance of the section is intended to apply and the section as a whole is intended to apply in other circumstances.

It is not the purpose of this section to induce you to infringe any patents or other property right claims or to contest validity of any such claims; this section has the sole purpose of protecting the integrity of the free software distribution system, which is implemented by public license practices. Many people have made generous contributions to the wide range of software distributed through that system in reliance on consistent application of that system; it is up to the author/donor to decide if he or she is willing to distribute software through any other system and a licensee cannot impose that choice.

This section is intended to make thoroughly clear what is believed to be a consequence of the rest of this License.

8. If the distribution and/or use of the Program is restricted in certain countries either by patents or by copyrighted interfaces, the original copyright holder who places the Program under this License may add an explicit geographical distribution limitation excluding those countries, so that distribution is permitted only in or among countries not thus excluded. In such case, this License incorporates the limitation as if written in the body of this License.

9. The Free Software Foundation may publish revised and/or new versions of the General Public License from time to time. Such new versions will be similar in spirit to the present version, but may differ in detail to address new problems or concerns.

Each version is given a distinguishing version number. If the Program specifies a version number of this License which applies to it and "any later version", you have the option of following the terms and conditions either of that version or of any later version published by the Free Software Foundation.

If the Program does not specify a version number of this License, you may choose any version ever published by the Free Software Foundation.

10. If you wish to incorporate parts of the Program into other free programs whose distribution conditions are different, write to the author to ask for permission. For software which is copyrighted by the Free Software Foundation, write to the Free Software Foundation; we sometimes make exceptions for this. Our decision will be guided by the two goals of preserving the free status of all derivatives of our free software and of promoting the sharing and reuse of software generally.

NO WARRANTY

11. BECAUSE THE PROGRAM IS LICENSED FREE OF CHARGE, THERE IS NO WARRANTY FOR THE PROGRAM, TO THE EXTENT PERMITTED BY APPLICABLE LAW. EXCEPT WHEN OTHERWISE STATED IN WRITING THE COPYRIGHT HOLDERS AND/OR OTHER PARTIES PROVIDE THE PROGRAM "AS IS" WITHOUT WARRANTY OF ANY KIND, EITHER EXPRESSED OR IMPLIED, INCLUDING, BUT NOT LIMITED TO, THE IMPLIED WARRANTIES OF MERCHANTABILITY AND FITNESS FOR A PARTICULAR PURPOSE. THE ENTIRE RISK AS TO THE QUALITY AND PERFORMANCE OF THE PROGRAM IS WITH YOU. SHOULD THE PROGRAM PROVE DEFECTIVE, YOU ASSUME THE COST OF ALL NECESSARY SERVICING, REPAIR OR CORRECTION.

12. IN NO EVENT UNLESS REQUIRED BY APPLICABLE LAW OR AGREED TO IN WRITING WILL ANY COPYRIGHT HOLDER, OR ANY OTHER PARTY WHO MAY MODIFY AND/OR REDISTRIBUTE THE PROGRAM AS PERMITTED ABOVE, BE LIABLE TO YOU FOR DAMAGES, INCLUDING ANY GENERAL, SPECIAL, INCIDENTAL OR CONSEQUENTIAL DAMAGES ARISING OUT OF THE USE OR INABILITY TO USE THE PROGRAM (INCLUDING BUT NOT LIMITED TO LOSS OF DATA OR DATA BEING RENDERED INACCURATE OR LOSSES SUSTAINED BY YOU OR THIRD PARTIES OR A FAILURE OF THE PROGRAM TO OPERATE WITH ANY OTHER PROGRAMS), EVEN IF SUCH HOLDER OR OTHER PARTY HAS BEEN ADVISED OF THE POSSIBILITY OF SUCH DAMAGES.

END OF TERMS AND CONDITIONS

How to Apply These Terms to Your New Programs

If you develop a new program, and you want it to be of the greatest possible use to the public, the best way to achieve this is to make it free software which everyone can redistribute and change under these terms.

To do so, attach the following notices to the program. It is safest to attach them to the start of each source file to most effectively convey the exclusion of warranty; and each file should have at least the "copyright" line and a pointer to where the full notice is found.

One line to give the program's name and a brief idea of what it does.

Copyright (C) <year> <name of author>

This program is free software; you can redistribute it and/or modify it under the terms of the GNU General Public License as published by the Free Software Foundation; either version 2 of the License, or (at your option) any later version.

This program is distributed in the hope that it will be useful, but WITHOUT ANY WARRANTY; without even the implied warranty of MERCHANTABILITY or FITNESS FOR A PARTICULAR PURPOSE. See the GNU General Public License for more details.

You should have received a copy of the GNU General Public License along with this program; if not, write to the Free Software Foundation, Inc., 51 Franklin Street, Fifth Floor, Boston, MA 02110-1301 USA.

Also add information on how to contact you by electronic and paper mail.

If the program is interactive, make it output a short notice like this when it starts in an interactive mode:

Gnomovision version 69, Copyright (C) year name of author Gnomovision comes with ABSOLUTELY NO WARRANTY; for details type 'show w'. This is free software, and you are welcome to redistribute it under certain conditions; type 'show c' for details.

The hypothetical commands 'show w' and 'show c' should show the appropriate parts of the General Public License. Of course, the commands you use may be called something other than 'show w' and 'show c'; they could even be mouse-clicks or menu items--whatever suits your program.

You should also get your employer (if you work as a programmer) or your school, if any, to sign a "copyright disclaimer" for the program, if necessary. Here is a sample; alter the names:

Yoyodyne, Inc., hereby disclaims all copyright interest in the program 'Gnomovision' (which makes passes at compilers) written by James Hacker.

signature of Ty Coon, 1 April 1989

Ty Coon, President of Vice

This General Public License does not permit incorporating your program into proprietary programs. If your program is a subroutine library, you may consider it more useful to permit linking proprietary applications with the library. If this is what you want to do, use the GNU Library General Public License instead of this License.

"CLASSPATH" EXCEPTION TO THE GPL

Certain source files distributed by Oracle America and/or its affiliates are subject to the following clarification and special exception to the GPL, but only where Oracle has expressly included in the particular source file's header the words "Oracle designates this particular file as subject to the "Classpath" exception as provided by Oracle in the LICENSE file that accompanied this code."

Linking this library statically or dynamically with other modules is making a combined work based on this library. Thus, the terms and conditions of the GNU General Public License cover the whole combination.

As a special exception, the copyright holders of this library give you permission to link this library with independent modules to produce an executable, regardless of the license terms of these independent modules, and to copy and distribute the resulting executable under terms of your choice, provided that you also meet, for each linked independent module, the terms and conditions of the license of that module. An independent module is a module which is not derived from or based on this library. If you modify this library, you may extend this exception to your version of the library, but you are not obligated to do so. If you do not wish to do so, delete this exception statement from your version.

This product includes OpenJPEG.

The copyright in this software is being made available under the 2-clauses BSD License, included below. This software may be subject to other third party and contributor rights, including patent rights, and no such rights are granted under this license.

- Copyright (c) 2002-2014, Universite catholique de Louvain (UCL), Belgium
- Copyright (c) 2002-2014, Professor Benoit Macq
- Copyright (c) 2003-2014, Antonin Descampe
- Copyright (c) 2003-2009, Francois-Olivier Devaux
- Copyright (c) 2005, Herve Drolon, FreeImage Team
- Copyright (c) 2002-2003, Yannick Verschueren
- Copyright (c) 2001-2003, David Janssens
- Copyright (c) 2011-2012, Centre National d'Etudes Spatiales (CNES), France
- Copyright (c) 2012, CS Systemes d'Information, France

All rights reserved.

Redistribution and use in source and binary forms, with or without modification, are permitted provided that the following conditions are met:

1. Redistributions of source code must retain the above copyright notice, this list of conditions and the following disclaimer.
2. Redistributions in binary form must reproduce the above copyright notice, this list of conditions and the following disclaimer in the documentation and/or other materials provided with the distribution.

THIS SOFTWARE IS PROVIDED BY THE COPYRIGHT HOLDERS AND CONTRIBUTORS `AS IS' AND ANY EXPRESS OR IMPLIED WARRANTIES, INCLUDING, BUT NOT LIMITED TO, THE IMPLIED WARRANTIES OF MERCHANTABILITY AND FITNESS FOR A PARTICULAR PURPOSE ARE DISCLAIMED. IN NO EVENT SHALL THE COPYRIGHT OWNER OR CONTRIBUTORS BE LIABLE FOR ANY DIRECT, INDIRECT, INCIDENTAL, SPECIAL, EXEMPLARY, OR CONSEQUENTIAL DAMAGES (INCLUDING, BUT NOT LIMITED TO, PROCUREMENT OF

SUBSTITUTE GOODS OR SERVICES; LOSS OF USE, DATA, OR PROFITS; OR BUSINESS INTERRUPTION) HOWEVER CAUSED AND ON ANY THEORY OF LIABILITY, WHETHER IN CONTRACT, STRICT LIABILITY, OR TORT (INCLUDING NEGLIGENCE OR OTHERWISE) ARISING IN ANY WAY OUT OF THE USE OF THIS SOFTWARE, EVEN IF ADVISED OF THE POSSIBILITY OF SUCH DAMAGE.

This product includes OpenSSL.

Copyright (c) 1998-2019 The OpenSSL Project. All rights reserved.

Redistribution and use in source and binary forms, with or without modification, are permitted provided that the following conditions are met:

1. Redistributions of source code must retain the above copyright notice, this list of conditions and the following disclaimer.
2. Redistributions in binary form must reproduce the above copyright notice, this list of conditions and the following disclaimer in the documentation and/or other materials provided with the distribution.
3. All advertising materials mentioning features or use of this software must display the following acknowledgment:
"This product includes software developed by the OpenSSL Project for use in the OpenSSL Toolkit. (<http://www.openssl.org/>)"
4. The names "OpenSSL Toolkit" and "OpenSSL Project" must not be used to endorse or promote products derived from this software without prior written permission. For written permission, please contact openssl-core@openssl.org.
5. Products derived from this software may not be called "OpenSSL" nor may "OpenSSL" appear in their names without prior written permission of the OpenSSL Project.
6. Redistributions of any form whatsoever must retain the following acknowledgment:
"This product includes software developed by the OpenSSL Project for use in the OpenSSL Toolkit (<http://www.openssl.org/>)"

THIS SOFTWARE IS PROVIDED BY THE OpenSSL PROJECT ``AS IS'' AND ANY EXPRESSED OR IMPLIED WARRANTIES, INCLUDING, BUT NOT LIMITED TO, THE IMPLIED WARRANTIES OF MERCHANTABILITY AND FITNESS FOR A PARTICULAR PURPOSE ARE DISCLAIMED. IN NO EVENT SHALL THE OpenSSL PROJECT OR ITS CONTRIBUTORS BE LIABLE FOR ANY DIRECT, INDIRECT, INCIDENTAL, SPECIAL, EXEMPLARY, OR CONSEQUENTIAL DAMAGES (INCLUDING, BUT NOT LIMITED TO, PROCUREMENT OF SUBSTITUTE GOODS OR SERVICES; LOSS OF USE, DATA, OR PROFITS; OR BUSINESS INTERRUPTION) HOWEVER CAUSED AND ON ANY THEORY OF LIABILITY, WHETHER IN CONTRACT, STRICT LIABILITY, OR TORT (INCLUDING NEGLIGENCE OR OTHERWISE) ARISING IN ANY WAY OUT OF THE USE OF THIS SOFTWARE, EVEN IF ADVISED OF THE POSSIBILITY OF SUCH DAMAGE.

This product includes OpenSSL.

Copyright (C) 1995-1998 Eric Young (eay@cryptsoft.com)
All rights reserved.

Redistribution and use in source and binary forms, with or without modification, are permitted provided that the following conditions are met:

1. Redistributions of source code must retain the copyright notice, this list of conditions and the following disclaimer.
2. Redistributions in binary form must reproduce the above copyright notice, this list of conditions and the following disclaimer in the documentation and/or other materials provided with the distribution.
3. All advertising materials mentioning features or use of this software must display the following acknowledgement:
"This product includes cryptographic software written by Eric Young (eay@cryptsoft.com)"
The word 'cryptographic' can be left out if the routines from the library being used are not cryptographic related :-).

4. If you include any Windows specific code (or a derivative thereof) from the apps directory (application code) you must include an acknowledgement: "This product includes software written by Tim Hudson (tjh@cryptsoft.com)"

THIS SOFTWARE IS PROVIDED BY ERIC YOUNG ``AS IS'' AND ANY EXPRESS OR IMPLIED WARRANTIES, INCLUDING, BUT NOT LIMITED TO, THE IMPLIED WARRANTIES OF MERCHANTABILITY AND FITNESS FOR A PARTICULAR PURPOSE ARE DISCLAIMED. IN NO EVENT SHALL THE AUTHOR OR CONTRIBUTORS BE LIABLE FOR ANY DIRECT, INDIRECT, INCIDENTAL, SPECIAL, EXEMPLARY, OR CONSEQUENTIAL DAMAGES (INCLUDING, BUT NOT LIMITED TO, PROCUREMENT OF SUBSTITUTE GOODS OR SERVICES; LOSS OF USE, DATA, OR PROFITS; OR BUSINESS INTERRUPTION) HOWEVER CAUSED AND ON ANY THEORY OF LIABILITY, WHETHER IN CONTRACT, STRICT LIABILITY, OR TORT (INCLUDING NEGLIGENCE OR OTHERWISE) ARISING IN ANY WAY OUT OF THE USE OF THIS SOFTWARE, EVEN IF ADVISED OF THE POSSIBILITY OF SUCH DAMAGE.

This product includes Qt.

The software uses Qt, licensed under LGPL v3. The Qt Toolkit is Copyright (C) 2019 The Qt Company Ltd.

Portions of this software are copyright (C) 2006-2015 The FreeType Project (www.freetype.org). All rights reserved.

Copyright (C) 1991-2011, Thomas G. Lane, Guido Vollbeding.
This software is based in part on the work of the Independent JPEG Group.

Secure Hash Algorithm SHA-3 - brg_endian
Copyright (c) 1998-2013, Brian Gladman, Worcester, UK. All rights reserved.

LICENSE TERMS

The redistribution and use of this software (with or without changes) is allowed without the payment of fees or royalties provided that:

1. source code distributions include the above copyright notice, this list of conditions and the following disclaimer;
2. binary distributions include the above copyright notice, this list of conditions and the following disclaimer in their documentation;
3. the name of the copyright holder is not used to endorse products built using this software without specific written permission.

DISCLAIMER

This software is provided 'as is' with no explicit or implied warranties in respect of its properties, including, but not limited to, correctness and/or fitness for purpose.

This product includes QtCopyDialog.

Copyright (c) 2009 Nokia Corporation and/or its subsidiary(-ies).
All rights reserved.

BECAUSE THE LIBRARY IS LICENSED FREE OF CHARGE, THERE IS NO WARRANTY FOR THE LIBRARY, TO THE EXTENT PERMITTED BY APPLICABLE LAW. EXCEPT WHEN OTHERWISE STATED IN WRITING THE COPYRIGHT HOLDERS AND/OR OTHER PARTIES PROVIDE THE LIBRARY "AS IS" WITHOUT WARRANTY OF ANY KIND, EITHER EXPRESSED OR IMPLIED, INCLUDING, BUT NOT LIMITED TO, THE IMPLIED WARRANTIES OF MERCHANTABILITY AND FITNESS FOR A PARTICULAR PURPOSE. THE ENTIRE RISK AS TO THE QUALITY AND PERFORMANCE OF THE LIBRARY IS WITH YOU. SHOULD THE LIBRARY PROVE DEFECTIVE, YOU ASSUME THE COST OF ALL NECESSARY SERVICING, REPAIR OR CORRECTION.

This product includes QtMigration.

Copyright (C) 2013 Digia Plc and/or its subsidiary(-ies).

Redistribution and use in source and binary forms, with or without modification, are permitted provided that the following conditions are

```
met:
* Redistributions of source code must retain the above copyright
  notice, this list of conditions and the following disclaimer.
* Redistributions in binary form must reproduce the above copyright
  notice, this list of conditions and the following disclaimer in
  the documentation and/or other materials provided with the
  distribution.
* Neither the name of Digia Plc and its Subsidiary(-ies) nor the names
  of its contributors may be used to endorse or promote products derived
  from this software without specific prior written permission.
```

```
THIS SOFTWARE IS PROVIDED BY THE COPYRIGHT HOLDERS AND CONTRIBUTORS
"AS IS" AND ANY EXPRESS OR IMPLIED WARRANTIES, INCLUDING, BUT NOT
LIMITED TO, THE IMPLIED WARRANTIES OF MERCHANTABILITY AND FITNESS FOR
A PARTICULAR PURPOSE ARE DISCLAIMED. IN NO EVENT SHALL THE COPYRIGHT
OWNER OR CONTRIBUTORS BE LIABLE FOR ANY DIRECT, INDIRECT, INCIDENTAL,
SPECIAL, EXEMPLARY, OR CONSEQUENTIAL DAMAGES (INCLUDING, BUT NOT
LIMITED TO, PROCUREMENT OF SUBSTITUTE GOODS OR SERVICES; LOSS OF USE,
DATA, OR PROFITS; OR BUSINESS INTERRUPTION) HOWEVER CAUSED AND ON ANY
THEORY OF LIABILITY, WHETHER IN CONTRACT, STRICT LIABILITY, OR TORT
(INCLUDING NEGLIGENCE OR OTHERWISE) ARISING IN ANY WAY OUT OF THE USE
OF THIS SOFTWARE, EVEN IF ADVISED OF THE POSSIBILITY OF SUCH DAMAGE."
```

This product includes QtService.

Copyright (C) 2010 Nokia Corporation and/or its subsidiary(-ies).

Redistribution and use in source and binary forms, with or without
modification, are permitted provided that the following conditions are
met:

- * Redistributions of source code must retain the above copyright
notice, this list of conditions and the following disclaimer.
- * Redistributions in binary form must reproduce the above copyright
notice, this list of conditions and the following disclaimer in
the documentation and/or other materials provided with the
distribution.
- * Neither the name of Nokia Corporation and its Subsidiary(-ies) nor
the names of its contributors may be used to endorse or promote
products derived from this software without specific prior written
permission.

```
THIS SOFTWARE IS PROVIDED BY THE COPYRIGHT HOLDERS AND CONTRIBUTORS
"AS IS" AND ANY EXPRESS OR IMPLIED WARRANTIES, INCLUDING, BUT NOT
LIMITED TO, THE IMPLIED WARRANTIES OF MERCHANTABILITY AND FITNESS FOR
A PARTICULAR PURPOSE ARE DISCLAIMED. IN NO EVENT SHALL THE COPYRIGHT
OWNER OR CONTRIBUTORS BE LIABLE FOR ANY DIRECT, INDIRECT, INCIDENTAL,
SPECIAL, EXEMPLARY, OR CONSEQUENTIAL DAMAGES (INCLUDING, BUT NOT
LIMITED TO, PROCUREMENT OF SUBSTITUTE GOODS OR SERVICES; LOSS OF USE,
DATA, OR PROFITS; OR BUSINESS INTERRUPTION) HOWEVER CAUSED AND ON ANY
THEORY OF LIABILITY, WHETHER IN CONTRACT, STRICT LIABILITY, OR TORT
(INCLUDING NEGLIGENCE OR OTHERWISE) ARISING IN ANY WAY OUT OF THE USE
OF THIS SOFTWARE, EVEN IF ADVISED OF THE POSSIBILITY OF SUCH DAMAGE.
```

This product includes QtSingleApplication.

Copyright (C) 2010 Nokia Corporation and/or its subsidiary(-ies). All rights
reserved.

Redistribution and use in source and binary forms, with or without
modification, are permitted provided that the following conditions are
met:

- * Redistributions of source code must retain the above copyright
notice, this list of conditions and the following disclaimer.
- * Redistributions in binary form must reproduce the above copyright
notice, this list of conditions and the following disclaimer in
the documentation and/or other materials provided with the
distribution.
- * Neither the name of Nokia Corporation and its Subsidiary(-ies) nor
the names of its contributors may be used to endorse or promote
products derived from this software without specific prior written
permission.

```
THIS SOFTWARE IS PROVIDED BY THE COPYRIGHT HOLDERS AND CONTRIBUTORS
```

"AS IS" AND ANY EXPRESS OR IMPLIED WARRANTIES, INCLUDING, BUT NOT LIMITED TO, THE IMPLIED WARRANTIES OF MERCHANTABILITY AND FITNESS FOR A PARTICULAR PURPOSE ARE DISCLAIMED. IN NO EVENT SHALL THE COPYRIGHT OWNER OR CONTRIBUTORS BE LIABLE FOR ANY DIRECT, INDIRECT, INCIDENTAL, SPECIAL, EXEMPLARY, OR CONSEQUENTIAL DAMAGES (INCLUDING, BUT NOT LIMITED TO, PROCUREMENT OF SUBSTITUTE GOODS OR SERVICES; LOSS OF USE, DATA, OR PROFITS; OR BUSINESS INTERRUPTION) HOWEVER CAUSED AND ON ANY THEORY OF LIABILITY, WHETHER IN CONTRACT, STRICT LIABILITY, OR TORT (INCLUDING NEGLIGENCE OR OTHERWISE) ARISING IN ANY WAY OUT OF THE USE OF THIS SOFTWARE, EVEN IF ADVISED OF THE POSSIBILITY OF SUCH DAMAGE.

This product includes QSql.

Copyright (c) 2009 Nokia Corporation and/or its subsidiary(-ies).

BECAUSE THE LIBRARY IS LICENSED FREE OF CHARGE, THERE IS NO WARRANTY FOR THE LIBRARY, TO THE EXTENT PERMITTED BY APPLICABLE LAW. EXCEPT WHEN OTHERWISE STATED IN WRITING THE COPYRIGHT HOLDERS AND/OR OTHER PARTIES PROVIDE THE LIBRARY "AS IS" WITHOUT WARRANTY OF ANY KIND, EITHER EXPRESSED OR IMPLIED, INCLUDING, BUT NOT LIMITED TO, THE IMPLIED WARRANTIES OF MERCHANTABILITY AND FITNESS FOR A PARTICULAR PURPOSE. THE ENTIRE RISK AS TO THE QUALITY AND PERFORMANCE OF THE LIBRARY IS WITH YOU. SHOULD THE LIBRARY PROVE DEFECTIVE, YOU ASSUME THE COST OF ALL NECESSARY SERVICING, REPAIR OR CORRECTION.

This product includes LibTIFF.

Copyright (c) 1988-1997 Sam Leffler
Copyright (c) 1991-1997 Silicon Graphics, Inc.

Permission to use, copy, modify, distribute, and sell this software and its documentation for any purpose is hereby granted without fee, provided that (i) the above copyright notices and this permission notice appear in all copies of the software and related documentation, and (ii) the names of Sam Leffler and Silicon Graphics may not be used in any advertising or publicity relating to the software without the specific, prior written permission of Sam Leffler and Silicon Graphics.

THE SOFTWARE IS PROVIDED "AS-IS" AND WITHOUT WARRANTY OF ANY KIND, EXPRESS, IMPLIED OR OTHERWISE, INCLUDING WITHOUT LIMITATION, ANY WARRANTY OF MERCHANTABILITY OR FITNESS FOR A PARTICULAR PURPOSE.

IN NO EVENT SHALL SAM LEFFLER OR SILICON GRAPHICS BE LIABLE FOR ANY SPECIAL, INCIDENTAL, INDIRECT OR CONSEQUENTIAL DAMAGES OF ANY KIND, OR ANY DAMAGES WHATSOEVER RESULTING FROM LOSS OF USE, DATA OR PROFITS, WHETHER OR NOT ADVISED OF THE POSSIBILITY OF DAMAGE, AND ON ANY THEORY OF LIABILITY, ARISING OUT OF OR IN CONNECTION WITH THE USE OR PERFORMANCE OF THIS SOFTWARE.

This product includes XercesC.

NOTICE file corresponding to section 4(d) of the Apache License, Version 2.0, in this case for the Apache Xerces distribution.

This product includes software developed by
The Apache Software Foundation (<http://www.apache.org/>).

Portions of this software were originally based on the following:
- software copyright (c) 1999, IBM Corporation., <http://www.ibm.com>.

This product includes XMP Toolkit.
Copyright (c) 2020, Adobe
All rights reserved.

Redistribution and use in source and binary forms, with or without modification, are permitted provided that the following conditions are met:

1. Redistributions of source code must retain the above copyright notice, this

list of conditions and the following disclaimer.

2. Redistributions in binary form must reproduce the above copyright notice, this list of conditions and the following disclaimer in the documentation and/or other materials provided with the distribution.
3. Neither the name of the copyright holder nor the names of its contributors may be used to endorse or promote products derived from this software without specific prior written permission.

THIS SOFTWARE IS PROVIDED BY THE COPYRIGHT HOLDERS AND CONTRIBUTORS "AS IS" AND ANY EXPRESS OR IMPLIED WARRANTIES, INCLUDING, BUT NOT LIMITED TO, THE IMPLIED WARRANTIES OF MERCHANTABILITY AND FITNESS FOR A PARTICULAR PURPOSE ARE DISCLAIMED. IN NO EVENT SHALL THE COPYRIGHT HOLDER OR CONTRIBUTORS BE LIABLE FOR ANY DIRECT, INDIRECT, INCIDENTAL, SPECIAL, EXEMPLARY, OR CONSEQUENTIAL DAMAGES (INCLUDING, BUT NOT LIMITED TO, PROCUREMENT OF SUBSTITUTE GOODS OR SERVICES; LOSS OF USE, DATA, OR PROFITS; OR BUSINESS INTERRUPTION) HOWEVER CAUSED AND ON ANY THEORY OF LIABILITY, WHETHER IN CONTRACT, STRICT LIABILITY, OR TORT (INCLUDING NEGLIGENCE OR OTHERWISE) ARISING IN ANY WAY OUT OF THE USE OF THIS SOFTWARE, EVEN IF ADVISED OF THE POSSIBILITY OF SUCH DAMAGE.

This product includes zlib.

(C) 1995-2022 Jean-loup Gailly and Mark Adler

This software is provided 'as-is', without any express or implied warranty. In no event will the authors be held liable for any damages arising from the use of this software.

Permission is granted to anyone to use this software for any purpose, including commercial applications, and to alter it and redistribute it freely, subject to the following restrictions:

1. The origin of this software must not be misrepresented; you must not claim that you wrote the original software. If you use this software in a product, an acknowledgment in the product documentation would be appreciated but is not required.
2. Altered source versions must be plainly marked as such, and must not be misrepresented as being the original software.
3. This notice may not be removed or altered from any source distribution.

Jean-loup Gailly	Mark Adler
jloup@gzip.org	madler@alumni.caltech.edu

2. Curve Pilot and PressSync Pilot

If you have a PressSync license, you will get two applications after installing Curve Pilot on your computer:

- Curve Pilot, which contains the IntelliCurve (DGC editor, strategy editor) and the PressSync (PressSync curve set editor) functionality,
- PressSync Pilot, which only contains the PressSync functionality.

This document describes the PressSync functionality. For an explanation of the IntelliCurve functionality, please see the IntelliCurve manual.

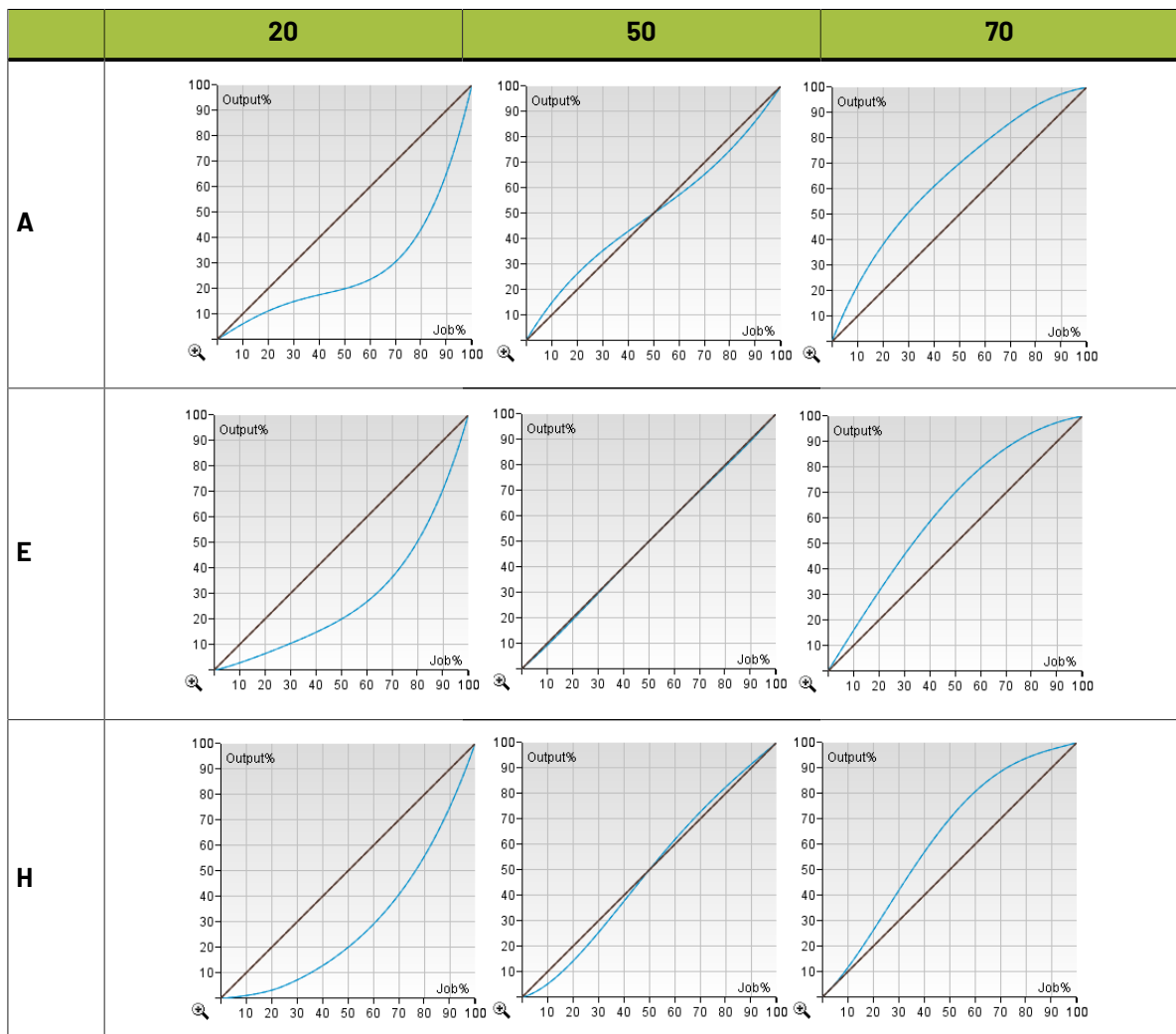
3. What is a PressSync Curve?

Curve Pilot / PressSync Pilot comes bundled with 400 PressSync curves. Those are pre-defined dot gain compensation curves of various forms and shapes that can fit the dot gain compensation needs of most presses.

Using PressSync curves significantly reduces the complexity of dot gain compensation in workflows.

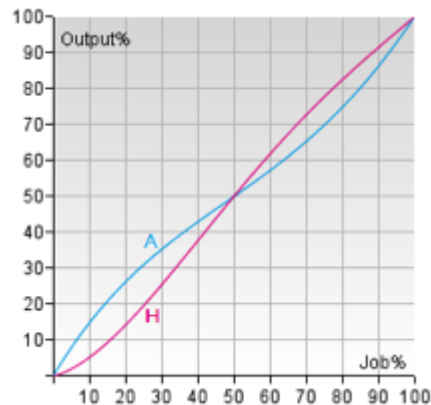
3.1. PressSync Curve Names

PressSync compensation curves are defined by a letter (A to H) and a number (20 to 70): A40, D20, F30, etc. The letter indicates the general shape of the curve in the highlights and in the shadows. The number indicates the compensation value for the 50% dot (midtone).

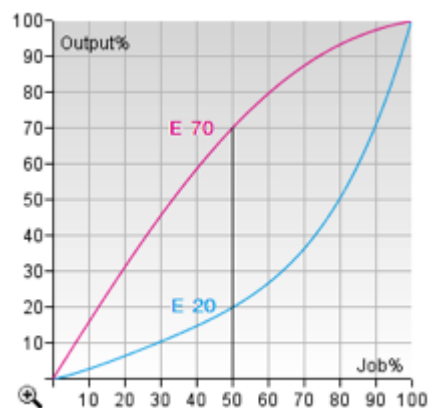


3.2. PressSync Example Curves

The A50 curve increases dot gain in the highlights (forcing the press to print darker in the highlights), and reduces dot gain in the shadows (thus forcing the press to print lighter in the shadows). The H50 curve exhibits the opposite behavior. Both curves exhibit an inflection point (where their slope changes sign) in the midtone.



The E70 curve increases dot gain throughout the tonal range, correcting the midtone to 70%. The E20 curve decreases dot gain throughout the tonal range, forcing the midtone to 20%.



3.3. Minimum and Maximum Values

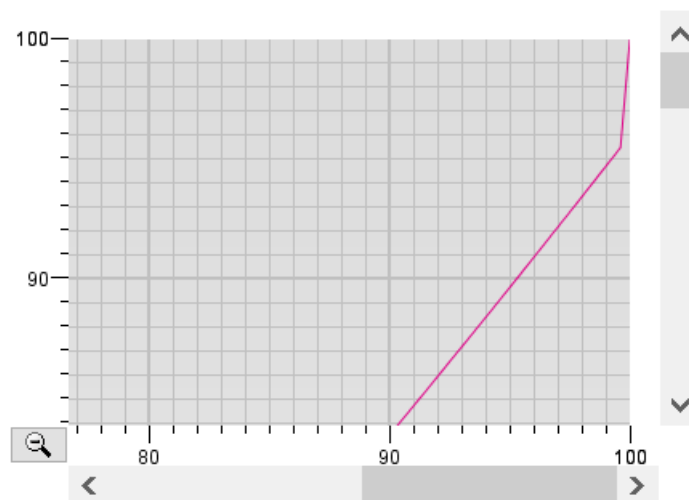
A PressSync curve can also contain information about a minimum and a maximum value.

The minimum value is the correction / compensation for the first non-zero tone. For example, if the minimum is set at 6%, the first tone value after zero will be adjusted to 6% as shown below.



Note: Regardless of the minimum value you choose, the 0% tone remains at 0%. As a result, the 0% tone will not be screened.

The maximum value is the correction / compensation for the tone just below 100%. For example, if the maximum value is 96%, a tone of 99.5% for example will be corrected to 96% and screened as shown below.



Note:

The 100% tone (the solids) will use the 100% level of the screen. This means that:

- for screens that do not use surface screening, solids will be kept as solids (not screened),
- for screens that use surface screening, solids will use the surface screening pattern defined for 100% in the screen.

**Tip:**

If you want to use your maximum value to screen the solids (so 100% is screened at 96% for example), you should:

- use a [flexible PressSync Curve](#),
- set the [Maximum Value](#) you want to use for screened your 100% tones,
- deselect the [Keep 100%](#) option in your curve.

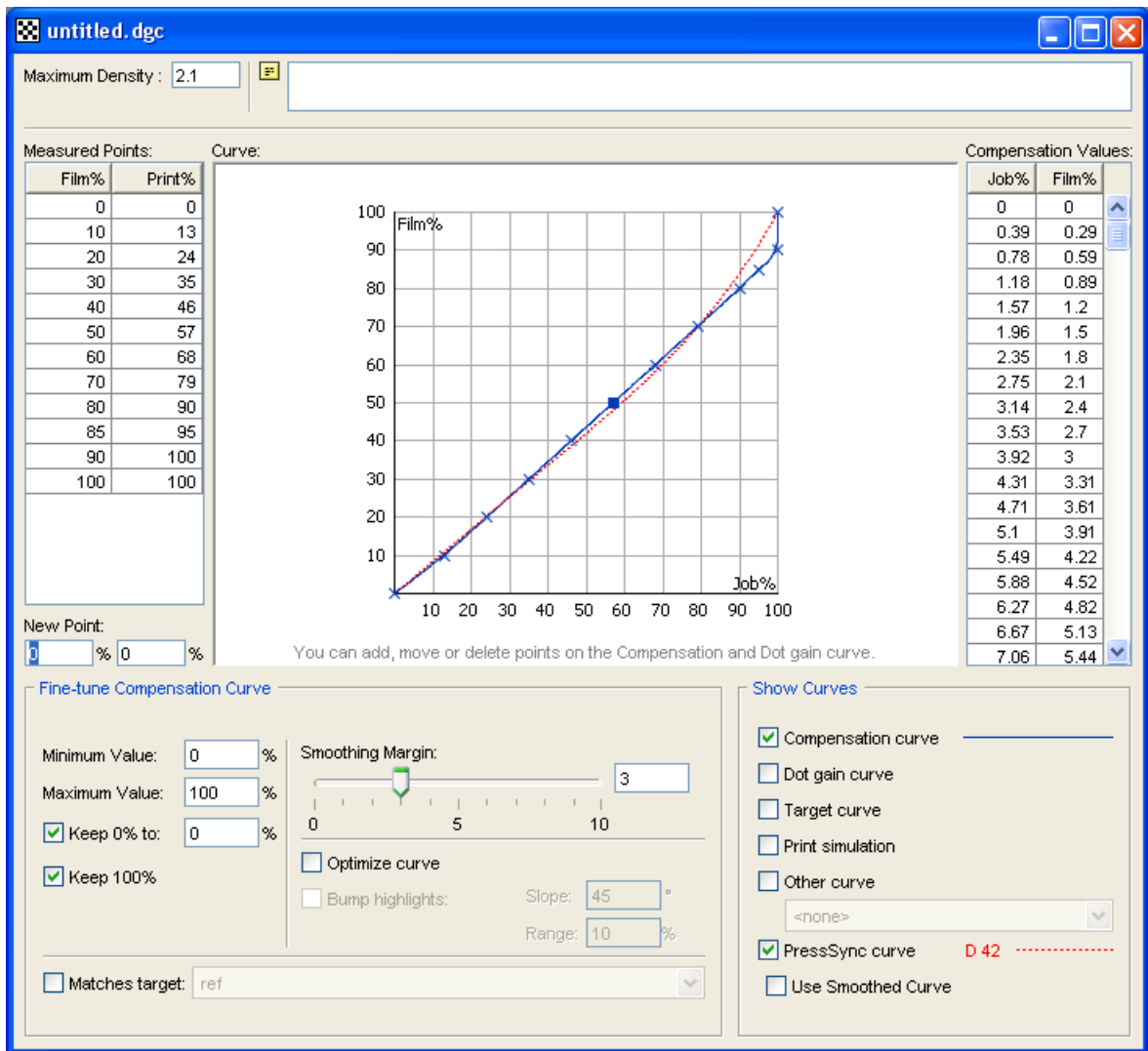
4. Finding a PressSync Curve for a Printing Ink

To find a PressSync curve for an individual ink, you need to print a vignette of this ink, measure it and enter the values into Curve Pilot.



Note: You can only do this in Curve Pilot, not PressSync Pilot.

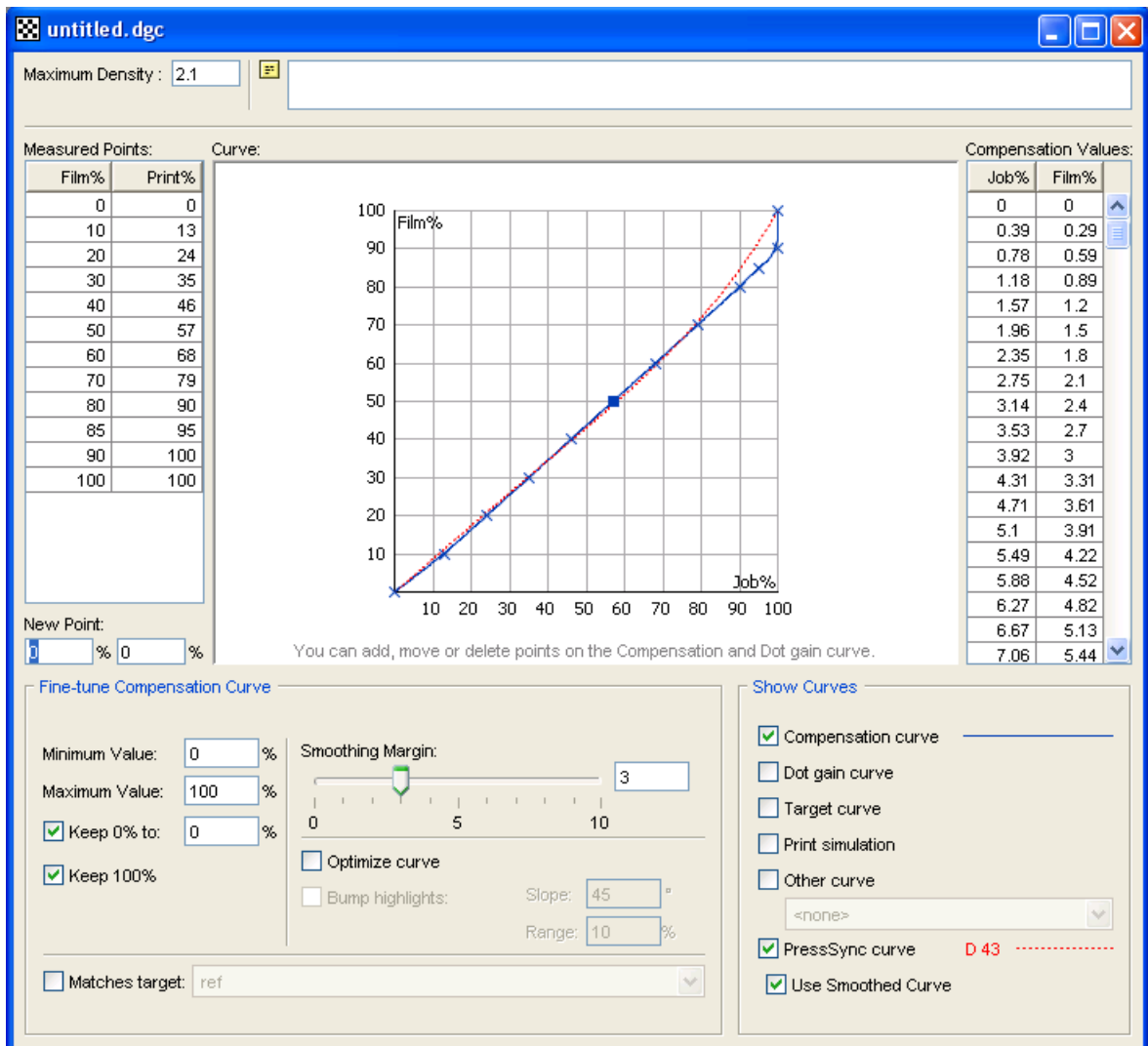
1. Print a vignette of the ink you want to compensate with a PressSync curve (without using any dot gain compensation).
2. In Curve Pilot, go to **File > New > DGC (.dgc)**.
3. Enter your ink measurements as you would when creating a DGC curve (see the IntelliCurve manual for details).
4. In the **Show Curves** area, make sure **Compensation curve** is selected, then select **PressSync curve**. This shows the best PressSync curve to use for your ink and printing conditions (press, substrate...) with a red dotted line on the graph.



You can see the PressSync curve name beside **PressSync curve**.

By default, the PressSync curve shown is the one that fits the compensation points the best. The compensation points are the compensation values for each measurement you have entered (they are shown as blue crosses on the graph).

5. If you want a PressSync curve that fits the smoothed compensation curve (blue curve) better (instead of the compensation points), select **Use Smoothed Curve**.



6. If desired, enter a **Minimum Value** and a **Maximum Value** to use for your PressSync curve (see [Minimum and Maximum Values](#) for information).

The minimum and maximum values you entered are shown beside the curve name. **D 42 (6%,100%)**

7. Save your curve:

- a) go to **File > Save**,
- b) enter a (meaningful) **File Name** for your PressSync curve,
- c) click **OK**.

5. What is a PressSync Curve Set?

A PressSync curve set is a collection of predefined dot gain compensation curves, each attached to an ink (a process ink or a spot color defined in Esko's CMS database).

Curve Pilot / PressSync Pilot creates and saves PressSync curve sets in the `.prsync` file format.

A `.prsync` file contains information about the desired printing condition, measurement data, the actual dot gain compensation curves, and history data related to curve set setup and/or measurement actions.

When sending a print job to your RIP application, you typically associate one or more `.prsync` files with it. This way, every separation in your job is compensated with the appropriate PressSync curve. For the details please refer to your RIP application manual.

6. Creating a PressSync Curve Set for Your Press

You can create either :

- An **empty curve set**: manually pick the PressSync curves for your inks without measuring your press output (for example if a third-party application gave you specific PressSync Curves to use).
- A **curve set with measurements**: measure a few press runs and compare them to target values to get your PressSync curves.

This way you can match a specification (ISO, GRACol, SWOP...) or another reference (if for example you have a good curve set for one of your presses, and want to make a similar one for a second press).



Note: We recommend you create a **curve set with measurements**, rather than matching the PressSync curves to your inks manually.

6.1. Creating an Empty Curve Set

You can create an **empty curve set** if you are not planning to measure your press runs at all and want to manually pick the PressSync curves for your inks. Do this for example if a third-party application gave you specific PressSync Curves to use.

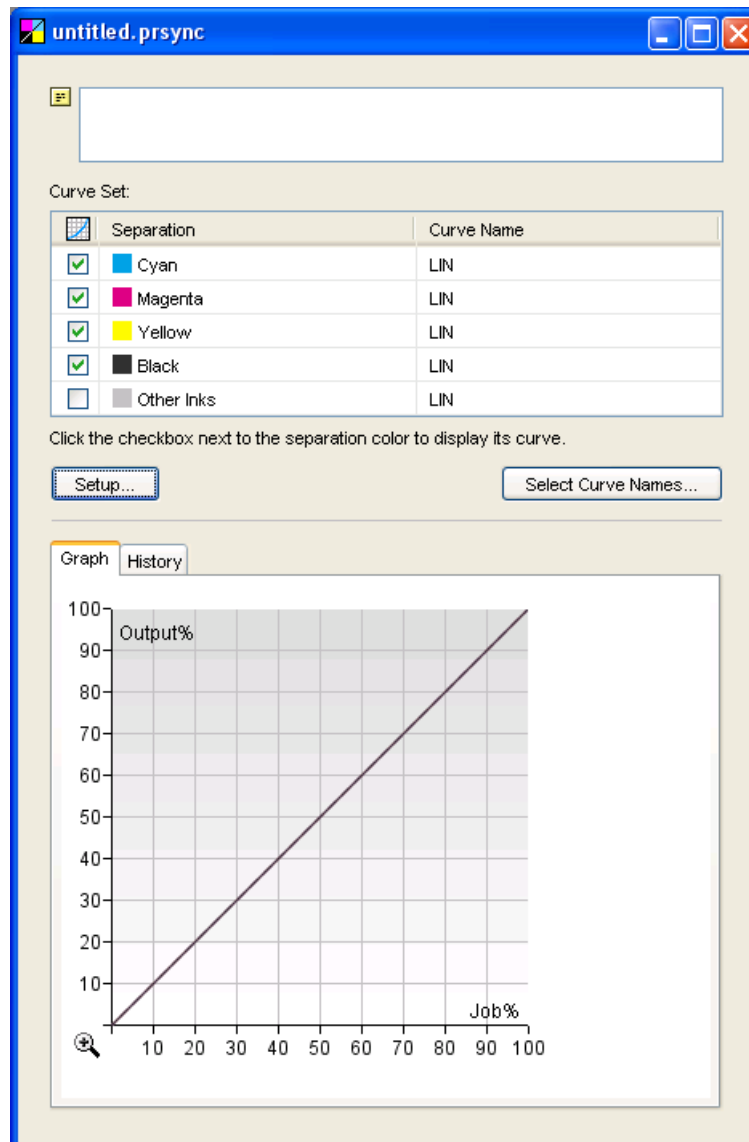
In Curve Pilot or PressSync Pilot:

1. Go to **File > New** then select **PressSync Curve Set (.prsync)**.
In PressSync Pilot, you can also click the **New...** button at the bottom of the **PressSync Curve Set Explorer** panel.
2. In the **Create New Curve Set** dialog, choose **An empty curve set**, and click **OK**.

This opens a dialog with an empty PressSync curve set.

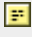
By default, the curve set contains the four process inks (**Cyan, Magenta, Yellow** and **Black**), and a channel called **Other Inks** (whose compensation will be used for any job ink not defined in the curve set).

At the start, the **Curve Name** shows **LIN** (linear), which means that no compensation curve is applied to those inks.



3. Click **Setup...** to open the **Setup** dialog.
4. Enter your name in **Changed by** and a **Reason** for the setup change.
5. If desired, enter a **Curve Set Description**.



Note: This will be shown in the  field of the curve set dialog (you can only edit the contents of this field from the **Setup** dialog).

You will enter the **Curve Set Name** when saving the curve set.

6. Add extra inks to the curve set if desired:
 - a) click **+** at the bottom of the **Spot Colors** list,
 - b) in the **Choose Inks** dialog, choose the **Ink Book**,
 - c) choose or enter the **Ink Name** and click **OK**.

When entering an ink name manually, you can use the full ink name or the short ink name. Make sure you use either the exact spelling from your CMS database or the official short name.




Note: You can add any ink that is defined in Esko's CMS database, but you cannot remove the default channels (**Cyan, Magenta, Yellow, Black** and **Other Inks**).

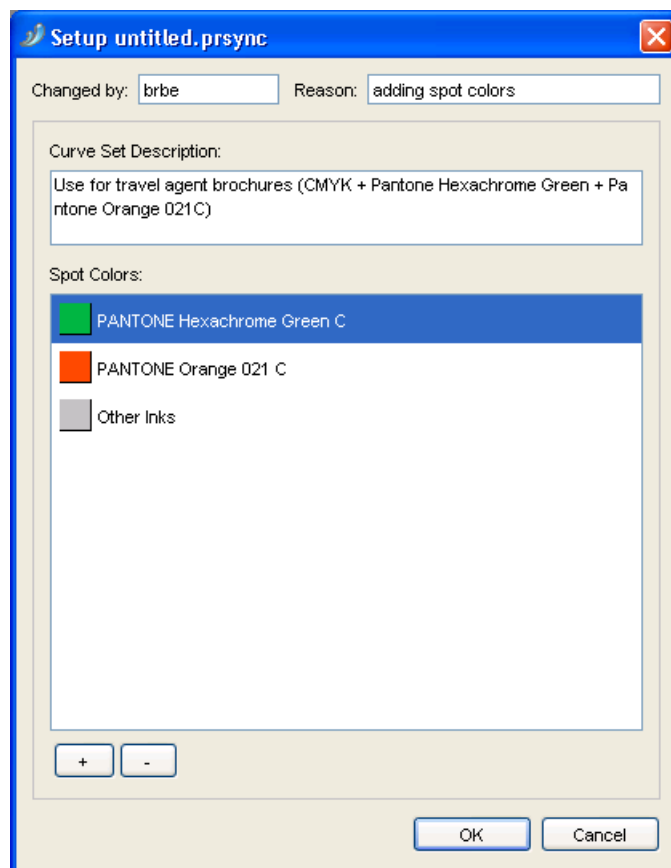


Tip:

If you are working on a curve set from/for a different system (with a different CMS), you can add inks that are not registered in your CMS database:

1. Select **<unregistered ink book>** in the **Ink Book** field.
2. Type the name of your ink book.
3. The **Ink Name** field will show **<unregistered ink>**. Type the name of your ink.
4. You will see a warning. Click **OK**.

When working with unregistered inks, you will see a "U" icon ()



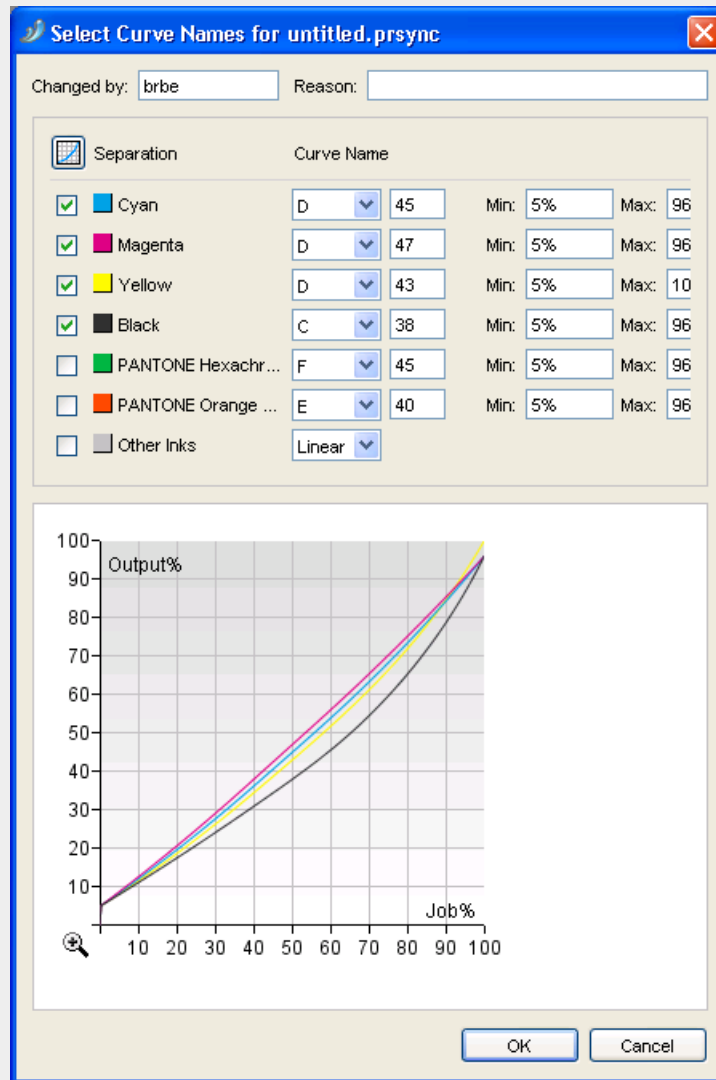
7. Click **OK** when you are done with the setup.
8. To assign curves manually to your inks:
 - a) Click **Select Curve Names...** in the curve set dialog.
 - b) In the **Select Curve Names** dialog that opens, choose a PressSync Curve for each ink: choose the letter, the number and enter a minimum and maximum value if necessary.



Note: Linear means that no curve is assigned to the ink (so no dot gain compensation is applied).

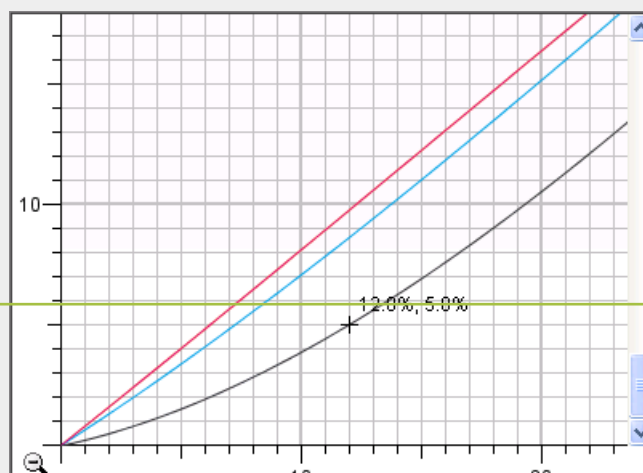

Tip:

To view the curves you picked on the bottom graph, check their boxes under . You can also click to show all process colors curves, or to hide all curves.



You can click to zoom in, then see different areas of the graph using the scroll bars or your mouse, and click to zoom out.

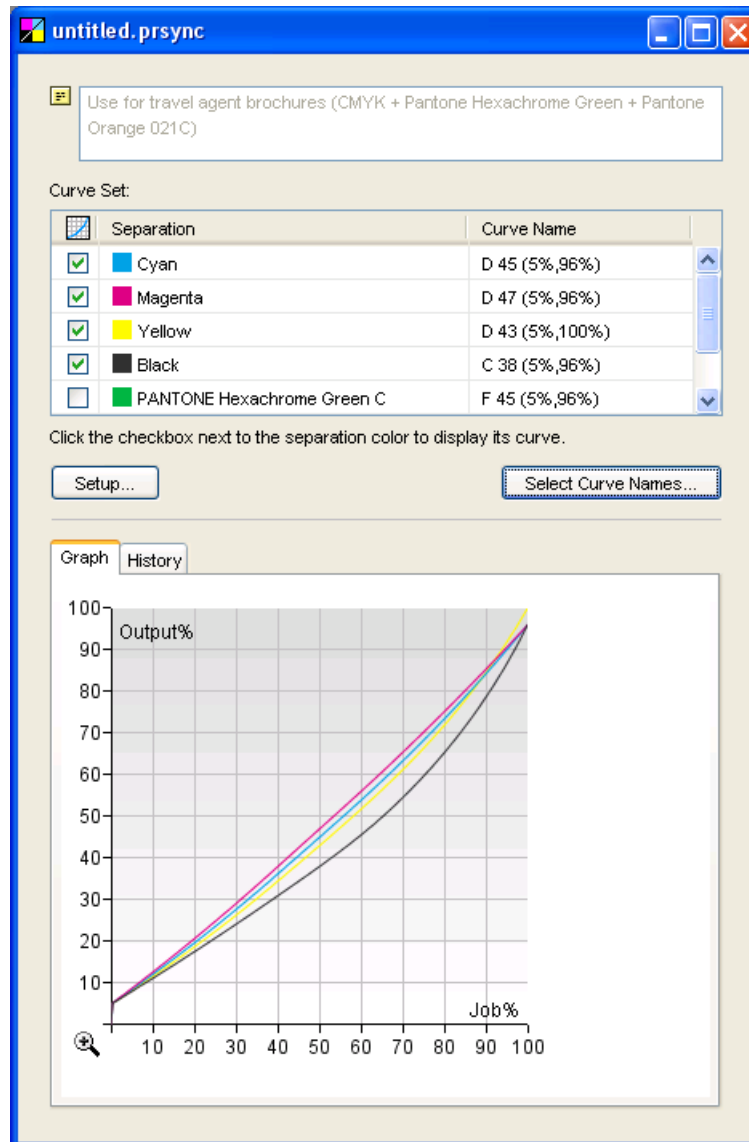
You can click a particular point of a curve to see its coordinates.



c) Click **OK** when you are done.

You can now see the curves you have picked in the curve set dialog.

You can also view them on the graph, and zoom in and out.



9. Save your curve set:

- a) Go to **File > Save** or use **Ctrl+S**.
- b) Give your curve set a name and click **OK**.

6.2. Creating a Curve Set from Measurements

To create a **curve set with measurements**, you need to measure a few press runs and compare them to target values.

You can either:

- Start from a **standard** curve set (delivered with Curve Pilot), if you want to compensate your press output to match a target curve from a specification (ISO, GRACol, SWOP...).
- Start from an **existing curve set**, if you have already created a PressSync curve set that you want to use as a basis for your new curve set. Do this for example if you have a good curve set for one of your presses, and you want to make a similar one for a second press.

In both cases, you can use the predefined/existing setup and only take measurements from a few press runs, or modify the setup to fit your needs before measuring your output.

1. Go to File > New then select PressSync Curve Set (.prsync).

In PressSync Pilot, you can also click the **New...** button at the bottom of the **PressSync Curve Set Explorer** panel.

2. In the Create New Curve Set dialog:

- a) choose either **A standard** or **An existing curve set**,
- b) select the curve set you want to start from in the list,



Important:

Make sure you pick a curve set with the type of target you want, as you won't be able to change it afterwards.

When starting from a standard, the standard name indicates the type of target you will have to measure:

- standard names starting with **3ck** (for example "3ck_GRAColG7.prsync") work with a **3 colors + K** target (you will have to measure patches for two colors: a **Cyan-Magenta-Yellow composite** and **Black**),
- standard names starting with **cmk** (for example "cmk_ISO_Newsprint.prsync") work with a **CMYK** target (you will have to measure patches for four colors: **Cyan, Magenta, Yellow** and **Black**).

Existing curve sets have the names you have given them. We recommend you include a reference to the target in the curve set names. If you haven't, you can open the existing curve set to check what kind of target it uses (in the [Process Colors Setup](#) on page 42) before creating a new curve set from it.

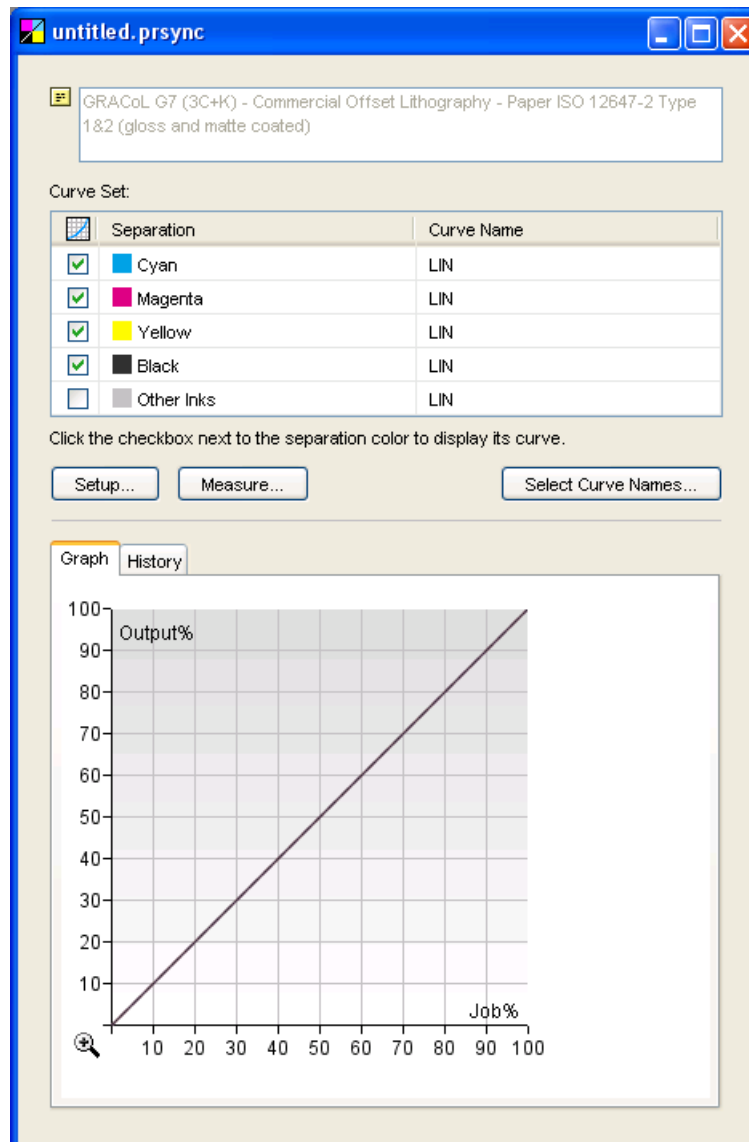
Do not start from an "empty" existing curve set when creating a curve set with measurements.

- c) click **OK**.

This opens an `untitled.prsync` curve set in a dialog, with the inks and setup of the standard/existing curve set you selected.

If you started from a standard curve set, you will see the four process inks (**Cyan, Magenta, Yellow** and **Black**), and a channel called **Other Inks** (whose compensation will be used for any job ink that isn't defined in the curve set).

At the start, each **Curve Name** shows **LIN** (linear), which means that no compensation curve is applied on those inks.



3. [Customize your setup.](#)
4. Take press run measurements to find the best PressSync Curve to use for each ink (see [Taking Press Runs Measurements](#) on page 49).
We recommend print and measure a Universal Target then production jobs with a control strip.
5. Save your curve set:
 - a) Go to **File > Save** or use **Ctrl+S**.
 - b) Give your curve set a name and click **OK**.

6.2.1. Customizing Your Setup

1. Click the **Setup...** button in the curve set dialog to open the **Setup** dialog.
2. Use the **Setup** dialog to:

- define the target values that your measurements will be compared to (for **Process Colors**, **Gray Balance** and **Spot Colors**),
- add or remove spot colors to be compensated by your curve set.

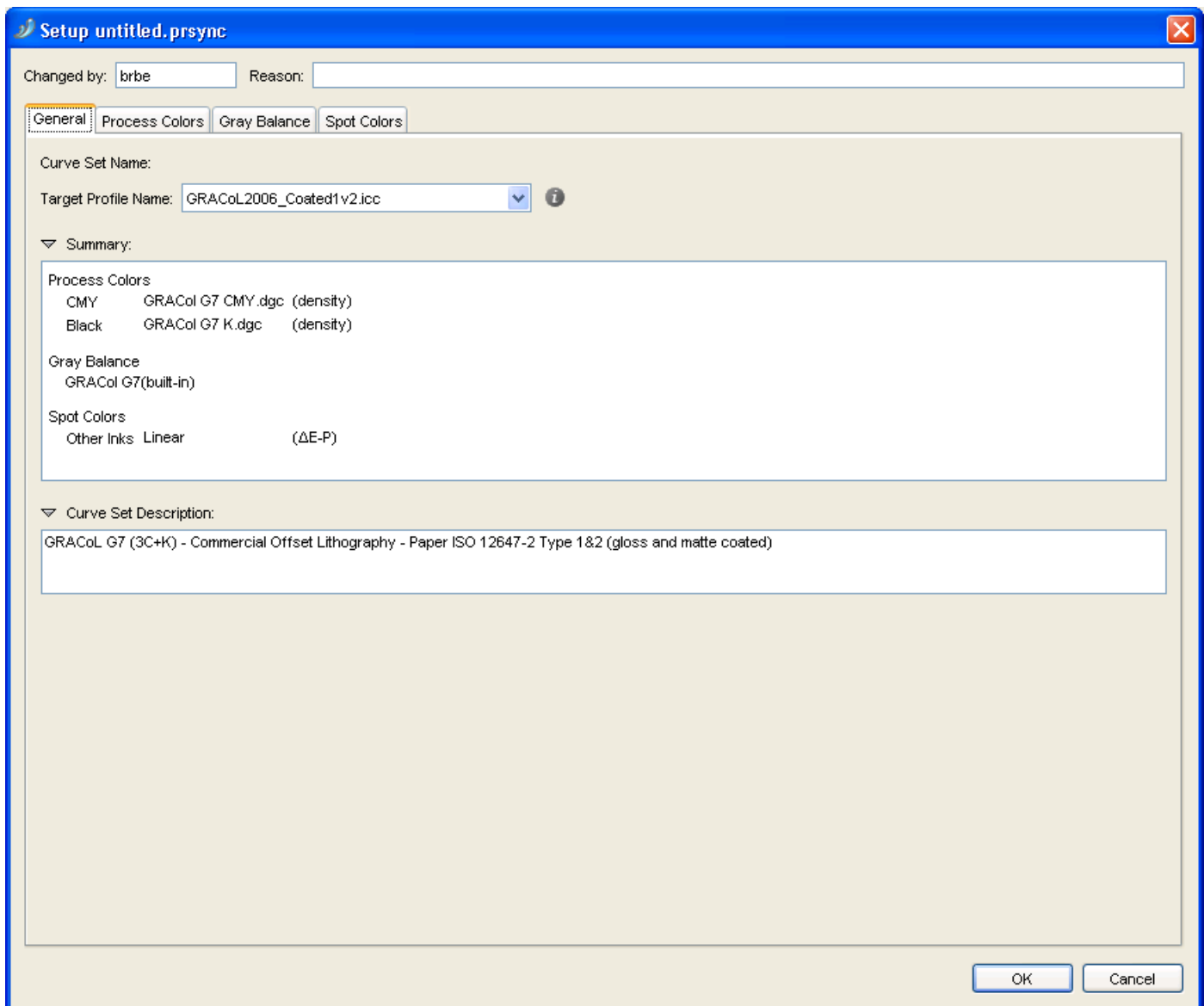
For details, see:

- [General Setup](#) on page 40,
- [Process Colors Setup](#) on page 42,
- [Gray Balance Setup](#) on page 44,
- [Spot Colors Setup](#) on page 47.

3. Click **OK** when you are done with the setup.

General Setup

In the curve set's **Setup** dialog:




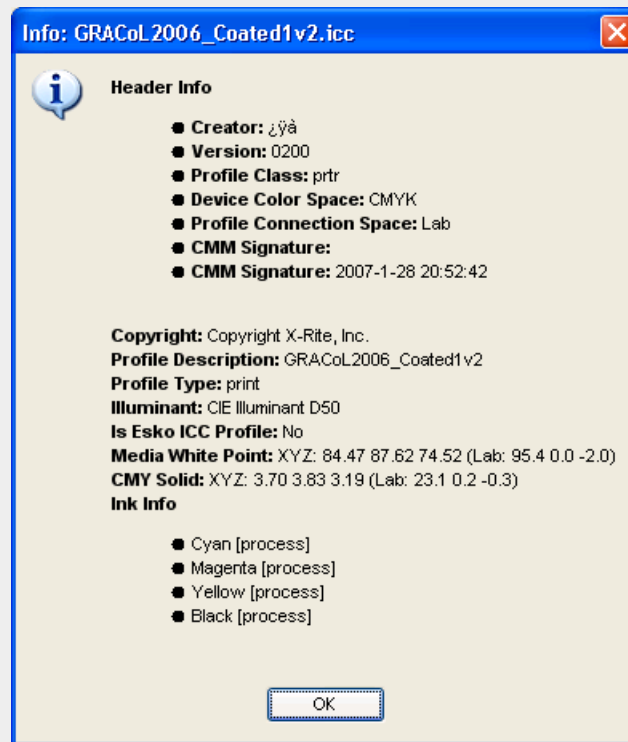
1. Enter your name in **Changed by** and a **Reason** for the setup change.
You will enter the **Curve Set Name** when saving the curve set.
2. If you want to calculate the reference values (to compare your measurements to) from an icc profile, select it in **Target Profile Name**.

If you started from a standard curve set, the corresponding icc profile is selected by default (for example, **GRACoL2006_Coated1v2.icc** if you started from **3ck_GRACoL67.prsync**).

You can also select **<none>**, if you want to define the reference values manually.



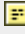
Note: You can click on  to see information about the selected target profile.



You will see a **Summary** of the target curves selected for process colors, gray balance and spot colors.

3. If desired, enter/change the **Curve Set Description**.



Note: This will be shown in the  field of the curve set dialog (you can only edit the contents of this field from the **Setup** dialog).

Process Colors Setup

In the **Process Colors** tab, you need to choose how to measure your process colors on print (on a universal target or a control strip on the side of a job), and what target values to compare your measurements to.



Note:

Depending on the curve set you started from (see [Creating a Curve Set from Measurements](#) on page 37), you will need to choose either:

- target references / values for **CMY** and for **Black**,
- target references / values for **Cyan, Magenta, Yellow** and **Black**.

Setup untitled.prsync

Changed by: brbe Reason:

General Process Colors Gray Balance Spot Colors

Measure: density ⓘ

Target Curves

Use Profile for Tone Target Curves

CMY: GRACol G7 CMY.dgc

Black: GRACol G7 K.dgc

Desired density of Paper and Solid

	Paper	Solid
CMY:	0.000	1.370
Black:	0.000	1.700

Desired density on Universal Target

Tones:	Paper	1/4	1/2	3/4	Solid
CMY:	0.000	0.252	0.540	0.907	1.370
Black:	0.000	0.223	0.495	0.894	1.700

Desired density on a Control Strip

Patches: 3

Tones:	Paper	Patch 1	Patch 2	Patch 3	Solid
CMY:	0.000	0.252	0.540	0.907	1.370
Black:	0.000	0.223	0.495	0.894	1.700

OK Cancel

1. Choose the unit of **Measure** to use for your press runs measurements. You can choose:
 - **density**, to measure your patches with a "Status E" (for Europe) or "Status T" (for the US) densitometer,
 - **%DotArea**, to measure how much of the area is taken by the dot (in percentage),
 - **DeltaE-P**, to measure the color difference between patch and paper (this is illuminant dependant and based on CIE-1976),
 - **%DeltaE-SP**, to measure the color difference between patch and paper, proportionally to the color difference between solid and paper (this is illuminant dependant and based on CIE-1976).



Tip: Click ⓘ to see more information about the units.

You will need a densitometer if you choose **density** or **%DotArea**, and a spectrophotometer if you choose **DeltaE-P** or **%DeltaE-SP**.

This unit will be used to define the desired values for **Paper and Solid**, **Universal Target** and **Control Strip** below.

2. In **Target Curves**, choose how to calculate the target values for process colors. You can either:

- Select **Use Profile for Tone Target Curves** if you want to use data from the **Target Profile** you selected in the *General tab* to calculate target values.

When you select this, the **CMY** and **Black** (or **Cyan, Magenta, Yellow** and **Black**) lists will be greyed out.

- Select **Linear** (in the lists) if you want linear print values (without dot gain) as target values.
- Select **User Defined** if you want to enter the target values manually instead of getting them from a curve or a profile.
- Select any **reference dgc curve** present in the DGC or Curves database to calculate the target values.



Tip: If you want to start from predefined values but refine them for your needs, select the predefined values first (**Target Profile**, **Linear** or a **reference dgc curve**) then select **User Defined**. This will keep the predefined values but you will be able to edit them.

3. Check the desired values for **Paper and Solid**, and adjust them as necessary.

For example, if you chose to work with densities, adjust the **density** of paper and solid as necessary.

4. For the **Universal Target**:

- If you have chosen **User Defined** in your **Target Curves**, enter the desired values for **1/4**, **1/2** and **3/4** tones.



Note: The **Paper** and **Solid** values are fixed. They are either **0%** and **100%** (if you are using **%DotArea** or **%DeltaE-SP** as unit) or the values you entered for **Paper and Solid** (if you are using **density** or **DeltaE-P** as unit).

- Otherwise, the values are calculated automatically based on what you chose in **Target Curves**.

5. For the **Control Strip**:

- If you have chosen **User Defined** in your **Target Curves**, enter the number of **Patches** you want to measure, their percentages and their desired values.



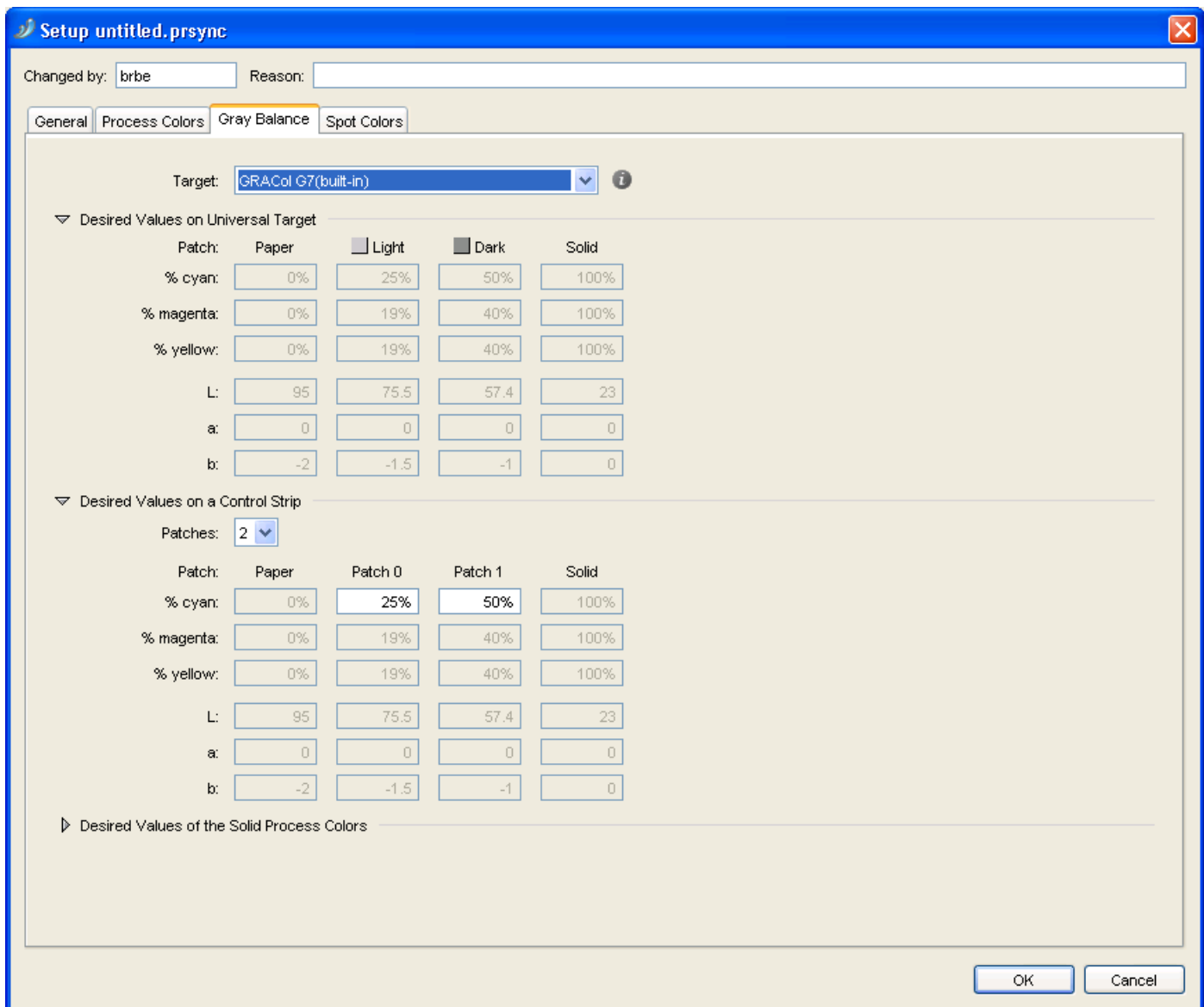
Note: The values of the **0%** and the **100%** patch are fixed. They are either **0%** and **100%** (if you are using **%DotArea** or **%DeltaE-SP** as unit) or the values you entered for **Paper and Solid** (if you are using **density** or **DeltaE-P** as unit).

- Otherwise, the values are calculated automatically based on what you chose in **Target Curves**, but you can still select the number of **Patches** and their percentages.

Gray Balance Setup

Checking **Gray Balance** is printing different intensities of gray using Cyan, Magenta and Yellow inks, and measuring Lab values on the print to check how neutral the gray is.

In the **Gray Balance** tab, you need to choose what target values to compare your gray prints measurements to (for prints on a universal target or a control strip on the side of a job).



Setup untitled.prsync

Changed by: brbe Reason:

General Process Colors **Gray Balance** Spot Colors

Target: GRACol G7(built-in) ⓘ

Desired Values on Universal Target

Patch:	Paper	Light	Dark	Solid
% cyan:	0%	25%	50%	100%
% magenta:	0%	19%	40%	100%
% yellow:	0%	19%	40%	100%
L:	95	75.5	57.4	23
a:	0	0	0	0
b:	-2	-1.5	-1	0

Desired Values on a Control Strip

Patches: 2

Patch:	Paper	Patch 0	Patch 1	Solid
% cyan:	0%	25%	50%	100%
% magenta:	0%	19%	40%	100%
% yellow:	0%	19%	40%	100%
L:	95	75.5	57.4	23
a:	0	0	0	0
b:	-2	-1.5	-1	0

Desired Values of the Solid Process Colors

OK Cancel

1. In **Target**, choose how to calculate the target values for gray balance. You can either:

- Select **From Target Profile** if you want to use data from the **Target Profile** you selected in the [General tab](#) to calculate target values.
- Select **User Defined** if you want to enter the target values manually instead of getting them from a curve or a specification.
- Select **Neutral Paper** if you want to calculate the target values relatively to the paper and solid (using the paper's Lab values as 0% gray, the solid's as 100%, and calculating the values in between).
- Select the built-in gray target of the specification (for example **GRAColG7 (built-in)** if you started from **3ck_GRAColG7.prsync**) to calculate the target values.

You can click on ⓘ to see information about the selected target.



Tip: If you want to start from predefined values but refine them for your needs, select the predefined values first (**Target Profile**, **Neutral Paper** or the built-in target of the specification) then select **User Defined**. This will keep the predefined values but you will be able to edit them.

2. The **Universal Target** will contain a **Light** and a **Dark** gray square, composed of **cyan**, **magenta** and **yellow**, with the **cyan** values fixed at respectively **25%** and **50%**.
 - If you have chosen **User Defined** as **Target**:
 - enter the desired **magenta** and **yellow** values for the **Light** and the **Dark** gray squares,
 - enter the desired **Lab** values of the cyan-magenta-yellow combination for the **Light** and the **Dark** gray squares,
 - enter the desired **Lab** values of the **Paper** and the **Solid** patch (100% cyan, 100% magenta and 100% yellow).
 - If you have chosen **Neutral Paper** as **Target**, enter the desired **Lab** values of the **Paper** and the **Solid** patch.

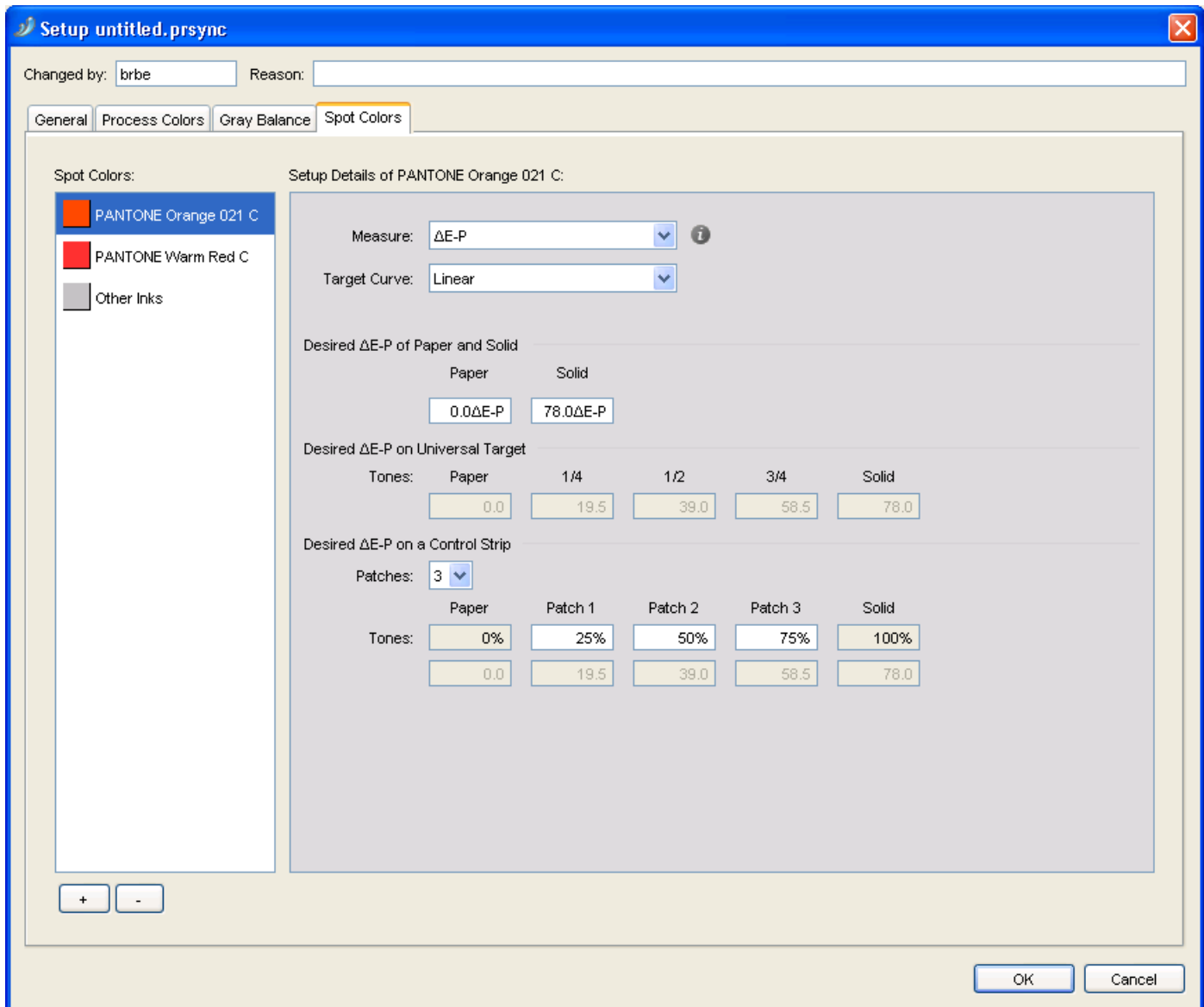
The target values for the **Light** and **Dark** gray squares are calculated automatically.
 - If you selected either the built-in gray target of the specification or the target profile as **Target**, all the target values are calculated automatically.
3. The **Control Strip** on the side of a production job will contain patches of gray composed of cyan, magenta and yellow.
 - If you have chosen **User Defined** as **Target**:
 - enter the number of **Patches** you want to measure,
 - enter the percentages of **cyan**, **magenta** and **yellow** to print for each of those patches,
 - enter the desired **Lab** values of your patches, the **Paper** and the **Solid** patch (100% cyan, 100% magenta and 100% yellow).
 - If you have chosen **Neutral Paper** as **Target**:
 - enter the number of **Patches** you want to measure,
 - enter the percentage of **cyan** to print for each patch (the percentages of **magenta** and **yellow** are calculated automatically),
 - enter the desired **Lab** values of the **Paper** and the **Solid** patch (100% cyan, 100% magenta and 100% yellow).
 - If you selected either the built-in gray target of the specification or the target profile as **Target**, enter the number of **Patches** you want to measure and the percentage of **cyan** to print for each patch.

All the other values are calculated automatically.
4. If you have chosen **User Defined** or **Neutral Paper**, you can also set desired **Lab** values for the **Solid Process Colors** if desired (you can get those from your ink vendor). Otherwise those values are defined automatically.

Spot Colors Setup

In the **Spot Colors** tab, you can add or remove spot colors. For each spot color you add, you can choose how to measure it on print (on a universal target or a control strip on the side of a job), and what target values to compare your measurements to.

You can also define what to do when encountering job spot colors that aren't defined in the setup.



1. To add a spot color:
 - a) click **+** at the bottom of the **Spot Colors** list,
 - b) in the **Choose Inks** dialog, choose the **Ink Book**,
 - c) choose or enter the **Ink Name** and click **OK**.

When entering an ink name manually, you can use the full ink name or the short ink name. Make sure you use either the exact spelling from your CMS database or the official short name.




Note: You can add any ink that is defined in Esko's CMS database, but you cannot remove the default channels (**Cyan, Magenta, Yellow, Black** and **Other Inks**).



Tip:


If you are working on a curve set from/for a different system (with a different CMS), you can add inks that are not registered in your CMS database:

1. Select **<unregistered ink book>** in the **Ink Book** field.
2. Type the name of your ink book.
3. The **Ink Name** field will show **<unregistered ink>**. Type the name of your ink.
4. You will see a warning. Click **OK**.

When working with unregistered inks, you will see a "U" icon (.

2. Select the spot color you added to define its setup.
3. Choose the unit of **Measure** to use for your press runs measurements. You can choose:
 - **density**, to measure your patches with a "Status E" (for Europe) or "Status T" (for the US) densitometer,
 - **%DotArea**, to measure how much of the area is taken by the dot (in percentage),
 - **DeltaE-P**, to measure the color difference between patch and paper (this is illuminant dependant and based on CIE-1976),
 - **%DeltaE-SP**, to measure the color difference between patch and paper, proportionally to the color difference between solid and paper (this is illuminant dependant and based on CIE-1976).



Tip: Click  to see more information about the units.

You will need a densitometer if you choose **density** or **%DotArea**, and a spectrophotometer if you choose **DeltaE-P** or **%DeltaE-SP**.

This unit will be used to define the desired values for **Paper and Solid, Universal Target** and **Control Strip** below.

4. Choose how to calculate the target values for this spot color. You can either:
 - Select **Linear** if you want linear print values (without dot gain) as target values.
 - Select **User Defined** if you want to enter the target values manually instead of getting them from a curve.
 - Select any **reference dgc curve** present in the DGC or Curves database to calculate the target values (only when measuring **density** or **%DotArea**).



Tip: If you want to start from predefined values but refine them for your needs, select the predefined values first (**Linear**, or a **reference dgc curve**) then select **User Defined**. This will keep the predefined values but you will be able to edit them.

5. Check the desired values for **Paper and Solid**, and adjust them as necessary.
For example, if you chose to work with densities, adjust the **density** of paper and solid as necessary.
6. For the **Universal Target**:

- If you have chosen **User Defined**, enter the desired values for **1/4**, **1/2** and **3/4** tones.



Note: The **Paper** and **Solid** values are fixed. They are either **0%** and **100%** (if you are using **%DotArea** or **%DeltaE-SP** as unit) or the values you entered for **Paper and Solid** (if you are using **density** or **DeltaE-P** as unit).

- Otherwise, the values are calculated automatically based on what you chose (**Linear** printing or a **reference dgc curve**).

7. For the **Control Strip**:

- If you have chosen **User Defined**, enter the number of **Patches** you want to measure, their percentages and their desired values.



Note: The values of the **0%** and the **100%** patch are fixed. They are either **0%** and **100%** (if you are using **%DotArea** or **%DeltaE-SP** as unit) or the values you entered for **Paper and Solid** (if you are using **density** or **DeltaE-P** as unit).

- Otherwise, the values are calculated automatically based on what you chose, but you can still select the number of **Patches** and their percentages.

6.2.2. Taking Press Runs Measurements

We recommend you first print and measure a Universal Target to find the initial curves, then refine those curves by printing production jobs and measuring their control strips.

Measuring a Universal Target

The Universal Target is a test form designed by Esko for setting up dot gain compensation curves for your press. It is typically used when you have no idea about what PressSync curves to use.

When measuring a Universal Target, you will look for **where the target values (defined in the setup) are in the vignettes**. This will be used to calculate PressSync curves for each ink.

For example, if you find the target value for 50% Black at 40%, Curve Pilot will know that the Black curve needs to compensate a 10% dot gain in the midtones.

1. Print a Universal Target without any dot gain compensation.



Note:

If you have a good starting value, you can create a preliminary curve set and use it to RIP and print the universal target.

For example, if you usually need to drop your midtones by 10%, you can use a curve set containing an E40 curve for each ink. Concentric Screening users usually start from C45 curves.

See [Using PressSync Curves in Nexus](#) on page 64 or [Using a PressSync Curve Set in FlexRip](#) on page 66 for details.

2. Click the **Measure...** button in the curve set dialog to open the **Measure Curve Set** dialog.
3. Select **Universal Target** and click **OK**.

This opens the **Measure Universal Target** dialog.

4. Enter your name in **Changed by** and a **Reason** for the setup change.
5. In most cases, you don't need to set anything in the **Universal Target** tab.
However, if you have printed the Universal Target with a preliminary curve set (see step 1), you should:
 - select **The Universal Target is printed with different PressSync Curves**,
 - define the PressSync Curve used for each ink: choose the letter, the number and enter a minimum and maximum value if necessary.
6. Go to the **Process Colors** tab and [measure the process colors vignettes](#).
7. Go to the **Gray Balance** tab and [measure the gray balance](#).
8. Go to the **Spot Colors** tab and [measure the spot colors vignettes](#).
9. Click **Results...** to see the best PressSync Curves to compensate your measurements (see [Resulting Curves](#) on page 52).
10. Click **Save...** and choose to:
 - **Save curves** if you want to save the measurements and the curves, and use those curves in your PressSync curve set.
 - **Save measurements only** if you only want to save the measurements but not the curves.



Note: Keep the PressSync curve set dialog open as you will now be [measuring a control strip](#).

Measure Process Colors

For process colors, you will be measuring either:

- the Cyan, Magenta, Yellow and Black vignettes if you started from a curve set working with a **CMYK** target,
- the CMY and the Black vignette if you started from a curve set working with a **3 colors + K** target.

See [Creating a Curve Set from Measurements](#) on page 37 for more information.



Attention:

Make sure your measuring device is configured to measure in the unit defined in the [setup](#) (**density**, **%DotArea**, **ΔE-P** or **%ΔE-SP**).

You can see the unit to use in the tab itself.

In the **Process Colors** tab:

1. Measure the solid patch of the vignette, and enter the value found in the **Measured Solid ...** field.
Press **Tab** or **Enter** to enable the fields below.
2. Search for the 1/4 tone target value (that you defined in the [setup](#)).



Tip: Start by measuring the 25% patch on the vignette, and move forwards or backwards until you find the value you are looking for.

Enter that value in the leftmost field (**<unit> of <value> found at:** where **<unit>** is the measuring unit you chose in the setup, and **<value>** is the target value you have set for the 1/4 tone).

3. Search for the 1/2 and 3/4 tones target values in the same way.

Enter those values in the middle and rightmost fields.

4. Repeat this for each vignette (either Cyan, Magenta, Yellow and Black, or CMY and Black).

Measure Gray Balance



Attention: For gray balance, you will need a spectrophotometer, to measure Lab values.

In the **Gray Balance** tab:

1. Measure the Lab values of the substrate and enter them in the **L**, **a** and **b** fields.
Press **Tab** or **Enter** to enable the fields below.
2. In the **Dark Square**, find the Lab target value defined in the [setup](#).
Enter the coordinates of the position where you found that value (the X coordinate is a letter, the Y coordinate a number).
3. In the **Light Square**, find the Lab target value defined in the [setup](#).
Enter the coordinates of the position where you found that value.

Measure Spot Colors

Although the Universal Target is designed to be used for process colors, you can also use it to print and measure spot colors.

To do this, make a copy of the Universal Target PDF file, and create a version that also contains vignettes for the required spot colors (copy one of the process colors' vignettes and change its ink settings).



Note: The spot colors you use must be defined in the curve set setup.



Attention:

Make sure your measuring device is configured to measure in the unit defined in the [setup](#) (**density**, **%DotArea**, **DeltaE-P** or **%DeltaE-SP**).

You can see the unit to use in the tab itself (for spot colors, it is usually a colorimetric unit: **DeltaE-P** or **%DeltaE-SP**).

In the **Spot Colors** tab:

1. Measure the solid patch of the first spot color vignette, and enter the value found in the **Measured Solid ...** field.
Press **Tab** or **Enter** to enable the fields below.
2. Search for the 1/4 tone target value (that you defined in the [setup](#)).



Tip: Start by measuring the 25% patch on the vignette, and move forwards or backwards until you find the value you are looking for.

Enter that value in the leftmost field (**<unit> of <value> found at:** where **<unit>** is the measuring unit you chose in the setup, and **<value>** is the target value you have set for the 1/4 tone).

3. Search for the 1/2 and 3/4 tones target values in the same way.
Enter those values in the middle and rightmost fields.

- Repeat this for each spot color vignette, including **Other Inks**.

Resulting Curves

- When you have entered all your measurements, click **Results...** to see the best PressSync curves to use.

untitled.prsync - Universal Target Measurement

Changed by: Reason:

Conclusion: E43 E45 E42 E47 E46 E49

Process Colors | Spot Colors

	Paper	25%	50%	75%	Solid
CMY					
Desired density		0.255	0.546	0.932	
Found at	0.000	23%	48%	72%	1.450
Black					
Desired density		0.227	0.505	0.923	
Found at	0.000	23%	47%	72%	1.900

	Light Square (25%)	Dark Square (50%)
Gray Balance		
Desired L	77.0	59.0
a	0.0	0.0
b	0.0	0.0
Found at position	J20.0	J42.0
	(C 25.0%, M 19.0%, Y 20.0%)	(C 50.0%, M 42.0%, Y 40.0%)

Select curves based on:

Result

Used Curve	New Curve
Linear	E43
Linear	E43
Linear	E45
Linear	E42

Preview Curves...

Save... Back To Measurements



Note:

You can also do this after entering the measurements for one or more inks, to see curve(s) for the ink(s). For example, enter the Cyan measurements and click **Results...** to see the Cyan curve.

You can then click **Back To Measurements** to go back and enter the rest of your measurements.

You can see all the curves at the top of the dialog (**Conclusion**).

- The **Process Colors** tab shows the measurements you entered for the process colors and the Gray Balance, and the resulting PressSync curve for each process color (in black in the **Result** area at right).
- The **Spot Colors** tab shows the measurements you entered for the spot colors, and the resulting PressSync curve for each spot color.


Note:

If the PressSync curve found for an ink doesn't fit the compensation points calculated from the measurements properly, it will be shown in red.

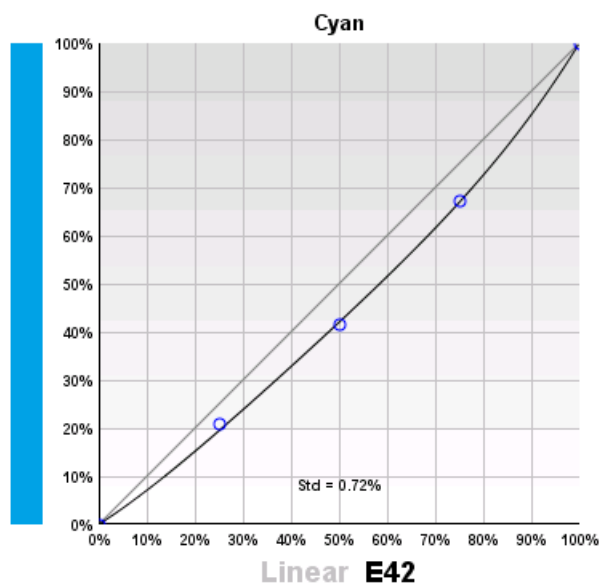
If no PressSync curve could be calculated because there are no or invalid measurements, you will see – instead of a curve name.

In that case, you can click the **Back To Measurements** button to verify your measurements.

If your measurements are correct (your press just prints that way), you should use Dot Gain Compensation instead of PressSync curves. See the IntelliCurve manual.

2. In the Process Colors tab, you can:

- Choose if you want to compensate mostly colors or mostly neutrals: in **Select curves based on**, choose either:
 - **Tone measurements only** if you want to pick curves that compensate mostly process colors, and not gray balance,
 - **Both Tone and Gray Balance measurements** if you want to pick average curves that compensate everything (process colors and gray balance),
 - **Mainly Gray Balance measurements** if you want to pick curves that compensate mostly gray balance, and not process colors.
- Click **Preview Curves...** to display each curve in a graph.



This shows:

- the original curve in gray,
- the new curve in black,
- the compensation points calculated from process (or spot) color measurements in blue,
- the compensation points calculated from gray balance measurements in gray,
- the standard deviation (**Std**), that shows how far the curve is from the compensation points (this should be under 2% for the curve to fit properly).

Depending on what you chose for gray balance importance, the curve will be closer to the process color compensation points or the gray balance compensation points.

3. In the **Spot Colors** tab, you can click **Preview Curves...** to display each curve in a graph.

4. Click **Save...** and choose to:

- **Save curves** if you want to save the measurements and the curves, and use those curves in your PressSync curve set.



Note: If the **Result** area showed — instead of a curve name, that ink's previous curve will not be changed.

- **Save measurements only** if you only want to save the measurements but not the curves.

This will save the measurement as incomplete, but you can edit it again or save the curves later (see [Continuing an Incomplete Measurement](#) on page 59).

Measuring a Control Strip of a Production Sheet

We recommend you print a production job using the [PressSync curves you found after measuring the Universal Target](#). This job should have a **control strip**, that you will measure to refine your PressSync curves.



Note:

You can use any type of control strip that contains several patches of each ink (for example 25%, 50%, 75% and 100%).

Make sure the patches of your control strip and what you have defined in the setup match. If you do not have a control strip matching your setup, change the setup (see [Process Colors Setup](#) on page 42, [Gray Balance Setup](#) on page 44 and [Spot Colors Setup](#) on page 47).

1. Use FlexRip or Nexus to RIP and print a production job (containing a control strip) using the PressSync curves you found after measuring the Universal Target.
See [Using PressSync Curves in Nexus](#) on page 64 or [Using a PressSync Curve Set in FlexRip](#) on page 66 for details.
2. Back in your Curve Pilot curve set, click the **Measure...** button again.
3. In the **Measure Curve Set** dialog that opens, select **A control strip of a production sheet** and click **OK**.

This opens the **Measure Production Sheet** dialog.

4. Enter your name in **Changed by** and a **Reason** for the setup change.
5. In most cases, you don't need to set anything in the **Production Sheet** tab.

However, if for some reason you have printed the Production Sheet with a different curve set than the one you found from the Universal target measurements, you should:

- select **The production sheet is printed with different PressSync Curves**,
 - define the PressSync Curve used for each ink: choose the letter, the number and enter a minimum and maximum value if necessary.
6. Go to the **Process Colors** tab and [measure the process colors vignettes](#).
 7. Go to the **Gray Balance** tab and [measure the gray balance](#).
 8. Go to the **Spot Colors** tab and [measure the spot colors vignettes](#).
 9. Click **Results...** to see the best PressSync Curves to compensate your measurements (see [Resulting Curves](#) on page 56).
 10. Click **Save...** and choose to:
 - **Save curves** if you want to save the measurements and the curves, and use those curves in your PressSync curve set.
 - **Save measurements only** if you only want to save the measurements but not the curves.

Measure Process Colors

For process colors, you will be measuring either:

- the Cyan, Magenta, Yellow and Black vignettes if you started from a curve set working with a **CMYK** target,
- the CMY and the Black vignette if you started from a curve set working with a **3 colors + K** target.

See [Creating a Curve Set from Measurements](#) on page 37 for more information.



Attention:

Make sure your measuring device is configured to measure in the unit defined in the [setup](#) (**density**, **%DotArea**, **$\Delta E-P$** or **$\% \Delta E-SP$**).

You can see the unit to use in the tab itself.

In the **Process Colors** tab:

1. Depending on what you have defined in the setup:
 - Measure the 0% and 100% patches, and enter the values found in the corresponding fields.
 - Measure the solid patch, and enter the value found in the **Measured Solid ...** field.

You can see the desired value(s) defined in the setup between brackets.

Press **Tab** or **Enter** to enable the other fields.

2. Measure the other patches (defined in the setup) and enter the values found in the corresponding fields.

You will see the desired values (defined in the setup) below those fields.

3. Repeat this for each vignette (either Cyan, Magenta, Yellow and Black, or CMY and Black).

Measure Gray Balance



Attention: For gray balance, you will need a spectrophotometer, to measure Lab values.

In the **Gray Balance** tab:

1. Measure the Lab values of the substrate and enter them in the **L**, **a** and **b** fields below.
You can see the desired values (defined in the [setup](#)) between brackets below.
2. Measure the Lab values of the solid (100%) patch and enter them in the **L**, **a** and **b** fields under the white patch.

Press **Tab** or **Enter** to enable the other fields.

3. Measure the other patches (defined in the setup) and enter the Lab values found in the corresponding fields.

You will see the desired values below those fields.



Tip: The numbers in the patches indicate the CMY composition (for example: 25, 19, 19 is 25% Cyan, 19% Magenta and 19% Yellow).

Measure Spot Colors



Note: The spot colors you use must be defined in the curve set setup.



Attention:

Make sure your measuring device is configured to measure in the unit defined in the [setup](#) (**density**, **%DotArea**, **DeltaE-P** or **%DeltaE-SP**).

You can see the unit to use in the tab itself (for spot colors, it is usually a colorimetric unit: **DeltaE-P** or **%DeltaE-SP**).

In the **Spot Colors** tab:

1. Depending on what you have defined in the setup:
 - Measure the 0% and 100% patches, and enter the values found in the corresponding fields.
 - Measure the solid patch, and enter the value found in the **Measured Solid ...** field.

You can see the desired value(s) defined in the setup between brackets.

Press **Tab** or **Enter** to enable the other fields.

2. Measure the other patches (defined in the setup) and enter the values found in the corresponding fields.

You will see the desired values (defined in the setup) below those fields.

3. Repeat this for each spot color vignette, including **Other Inks**.

Resulting Curves

1. When you have entered all your measurements, click **Results...** to see the best PressSync curves to use.

untitled.psync - Control Strip Measurement

Changed by: lbrbe Reason:

Conclusion: ■ E40 ■ E40 ■ E42 ■ E40 ■ E44 ■ E42 ■ E49

Process Colors Spot Colors

	Paper	25%	50%	75%	Solid
CMY					
Measured density	0.000	0.260	0.600	0.990	1.440
Desired density		0.255	0.545	0.930	
Black					
Measured density	0.000	0.230	0.540	0.970	1.800
Desired density		0.226	0.502	0.913	

	Paper	Patch 1	Patch 2	Solid
Gray Balance				
Gray Value	0%	25%	50%	100%
L	95.0	77.0	60.0	23.4
Desired L		77.1	59.2	
a	0.0	0.0	0.0	0.0
Desired A		0.0	0.0	
b	0.0	0.0	0.0	0.0
Desired B		0.0	0.0	

Select curves based on:
Tone measurements only

Result

	Used Curve	New Curve
■	E42	E40
■	E43	E40
■	E45	E42
■	E42	E40

Preview Curves...

Save... Back To Measurements



Note:

You can also do this after entering the measurements for one or more inks, to see curve(s) for the ink(s). For example, enter the Cyan measurements and click **Results...** to see the Cyan curve.

You can then click **Back To Measurements** to go back and enter the rest of your measurements.

You can see all the curves at the top of the dialog (**Conclusion**).

- The **Process Colors** tab shows the measurements you entered for the process colors and the Gray Balance, and the resulting PressSync curve for each process color (in black in the **Result** area at right).

- The **Spot Colors** tab shows the measurements you entered for the spot colors, and the resulting PressSync curve for each spot color.



Note:

If the PressSync curve found for an ink doesn't fit the compensation points calculated from the measurements properly, it will be shown in red.

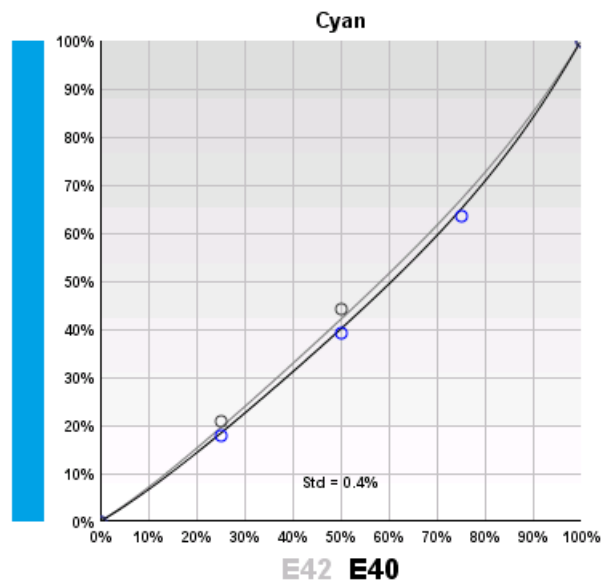
If no PressSync curve could be calculated because there are no or invalid measurements, you will see – instead of a curve name.

In that case, you can click the **Back To Measurements** button to verify your measurements.

If your measurements are correct (your press just prints that way), you should use Dot Gain Compensation instead of PressSync curves. See the IntelliCurve manual.

2. In the **Process Colors** tab, you can:

- Choose if you want to compensate mostly colors or mostly neutrals: in **Select curves based on**, choose either:
 - **Tone measurements only** if you want to pick curves that compensate mostly process colors, and not gray balance,
 - **Both Tone and Gray Balance measurements** if you want to pick average curves that compensate everything (process colors and gray balance),
 - **Mainly Gray Balance measurements** if you want to pick curves that compensate mostly gray balance, and not process colors.
- Click **Preview Curves...** to display each curve in a graph.



This shows:

- the original curve in gray,

- the new curve in black,
- the compensation points calculated from process (or spot) color measurements in blue,
- the compensation points calculated from gray balance measurements in gray,
- the standard deviation (**Std**), that shows how far the curve is from the compensation points (this should be under 2% for the curve to fit properly).

Depending on what you chose for gray balance importance, the curve will be closer to the process color compensation points or the gray balance compensation points.

3. In the **Spot Colors** tab, you can click **Preview Curves...** to display each curve in a graph.

4. Click **Save...** and choose to:

- **Save curves** if you want to save the measurements and the curves, and use those curves in your PressSync curve set.



Note: If the **Result** area showed – instead of a curve name, that ink's previous curve will not be changed.



- **Save measurements only** if you only want to save the measurements but not the curves.

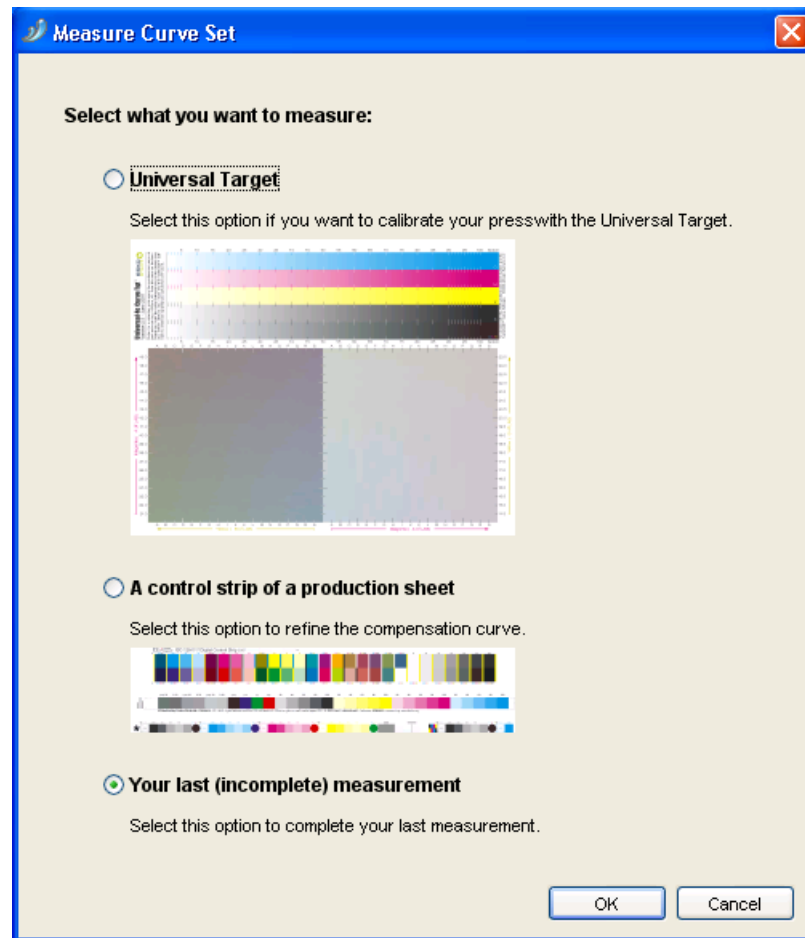
This will save the measurement as incomplete, but you can edit it again or save the curves later (see [Continuing an Incomplete Measurement](#) on page 59).

Continuing an Incomplete Measurement

When a measurement was saved with the option **Save measurements only**, the measurement is saved as incomplete (whether you filled in all the measurement fields or not). The PressSync curves resulting from that measurement are not used for the curve set.

To edit it (if needed) and save the curves, do the following:

- 1.** Make sure the incomplete measurement is active in the *History* (you should see  , not  beside it).
If it isn't, make it active (see [Reverting to a Previous History Stage](#) on page 63).
- 2.** Click the **Measure...** button in the curve set dialog.
- 3.** In the **Measure Curve Set** dialog, select **Your last (incomplete) measurement** and click **OK**.



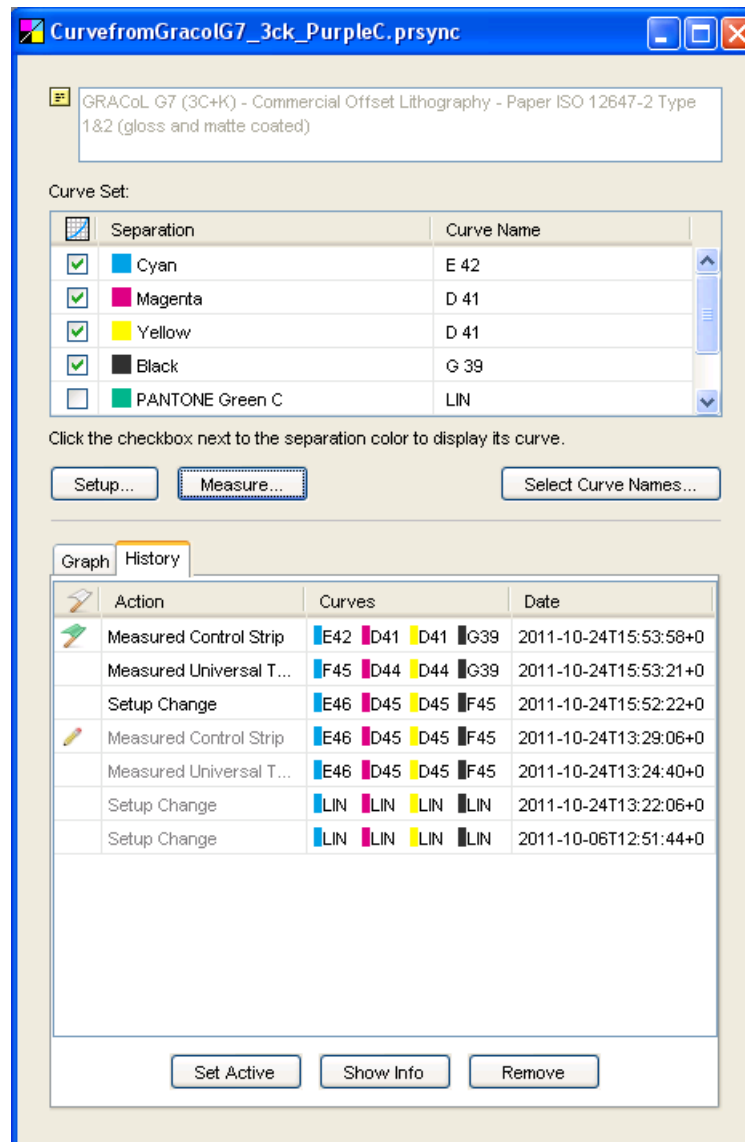
4. Complete your measurement if needed, and save the measurement and the curves.

6.2.3. History

When opening a PressSync curve set, you can see a **History** tab in the curve set dialog. This contains any previously saved setups, measurements and curves, with the most recent stage on top.

You can use it to:

- View the details of previous setups, measurements or curves.
- Revert to a previous setup, measurements or curves.
- Delete previous setups, measurements or curves that you are not using.



For each history stage, you can see:

- its state:
 - currently active (🟢),
 - active but incomplete measurement (🟡),
 - inactive and incomplete measurement (🔴),
 - inactive and not linked to the current setup (greyed out),
- what has changed (for example **Measured Control Strip** or **Setup Change**),
- the **Curves** resulting from that action,
- the **Date** and time of the change.



Note:

Incomplete measurements (or) do not change the curves in the curve set.

Only complete measurements and **Manual Curve Change** actions do.

So if your last action is an incomplete measurement, the curves in the curve set at that point are those resulting from the last complete measurement or manual curve change.

To finish an incomplete measurement, see [Continuing an Incomplete Measurement](#) on page 59.

Viewing Previous History Stages

- To view a previous history stage, select it and click the **Show Info** button. This shows all the details of the stage you selected (setup, measurement or manual curve change), but in read-only mode.

Changed by: Reason:

Conclusion: ■ E40 ■ E40 ■ E42 ■ E40 ■ E44 ■ E42 ■ E49

Process Colors | Spot Colors


	Paper	25%	50%	75%	Solid
CMY					
Measured density	0.000	0.260	0.600	0.990	1.440
Desired density		0.255	0.545	0.930	
Black					
Measured density	0.000	0.230	0.540	0.970	1.800
Desired density		0.226	0.502	0.913	
Gray Balance					
Gray Value	0%	25%	50%	100%	
L	95.0	77.0	60.0	23.4	
Desired L		77.1	59.2		
a	0.0	0.0	0.0	0.0	
Desired A		0.0	0.0		
b	0.0	0.0	0.0	0.0	
Desired B		0.0	0.0		

Select curves based on:

Result

	Used Curve	New Curve
■	E42	E40
■	E43	E40
■	E45	E42
■	E42	E40

Reverting to a Previous History Stage

- To revert to a previous history stage, select it and click the **Set Active** button. It will get a green flag .
- Setting a **completed measurement** active reverts to the **PressSync curves resulting from that measurement**.
- Setting an **incomplete measurement** active reverts to the **PressSync curves used to print the sheet measured**.
- Setting a **Manual Curve Change** active reverts to the **PressSync curves set manually** at that time.
- Setting a **Setup Change** active reverts to the **setup version created by the setup change**.

This can for example change spot colors or how to measure your prints.



Note: Each measurement made is based on a specific setup version. When changing the setup of the curve set or activating another setup version, the measurements corresponding to other setup versions will be grayed out.

Deleting a Previous History Stage

To delete previous setups, measurements or curves that you are not using:

- To delete a previous history stage, select it and click the **Remove** button.



Attention:

You cannot delete:

- active stages (you need to first activate another stage instead),
- setup stages used by measurements (you need to delete the measurements before you can delete the setup).

7. Using PressSync Curves and Curve Sets

7.1. Using a PressSync Curve in Imaging Engine

To apply a PressSync curve on your separations when ripping a job with Imaging Engine, enter it in the **Image to Screened Separations** task.

1. In the **Image to Screened Separations** ticket, click the **Separations** tab.
2. In the **Default Press Curve** list, select **PressSync**.
3. Select the letter and number of the PressSync curve you want to use.

This applies that PressSync curve to all separations in your file.



Note: If you have chosen to use the curves saved in your input file (see [Use press curves from file](#) in the Imaging Engine documentation), your PressSync curve will only be applied to the separations that don't have a curve defined in the file.



Tip:

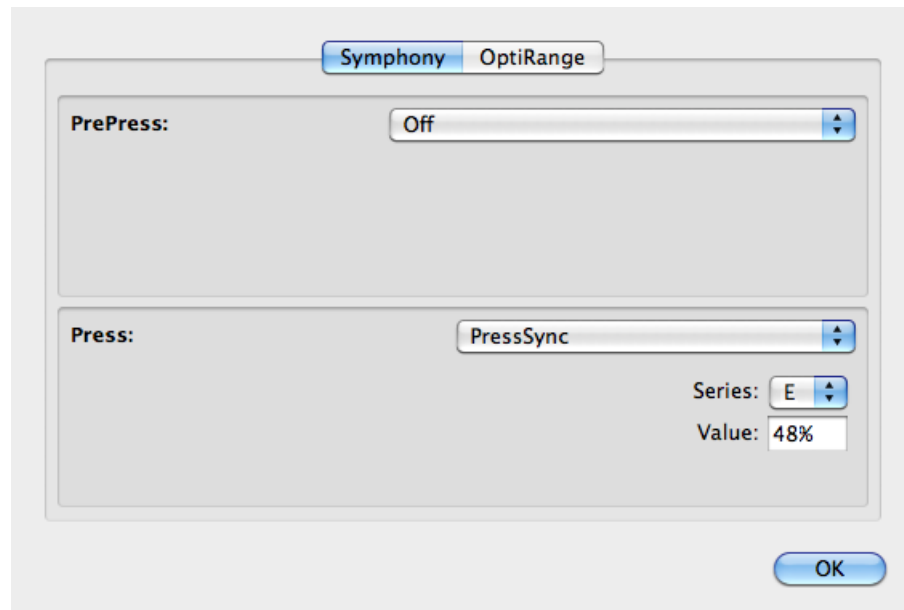
If you want to use different PressSync curves for different separations, you can use a [PressSync curve set](#) instead.

Select **Curve Strategy** in **Default Press Curve**, then select your PressSync curve set in the list at right.

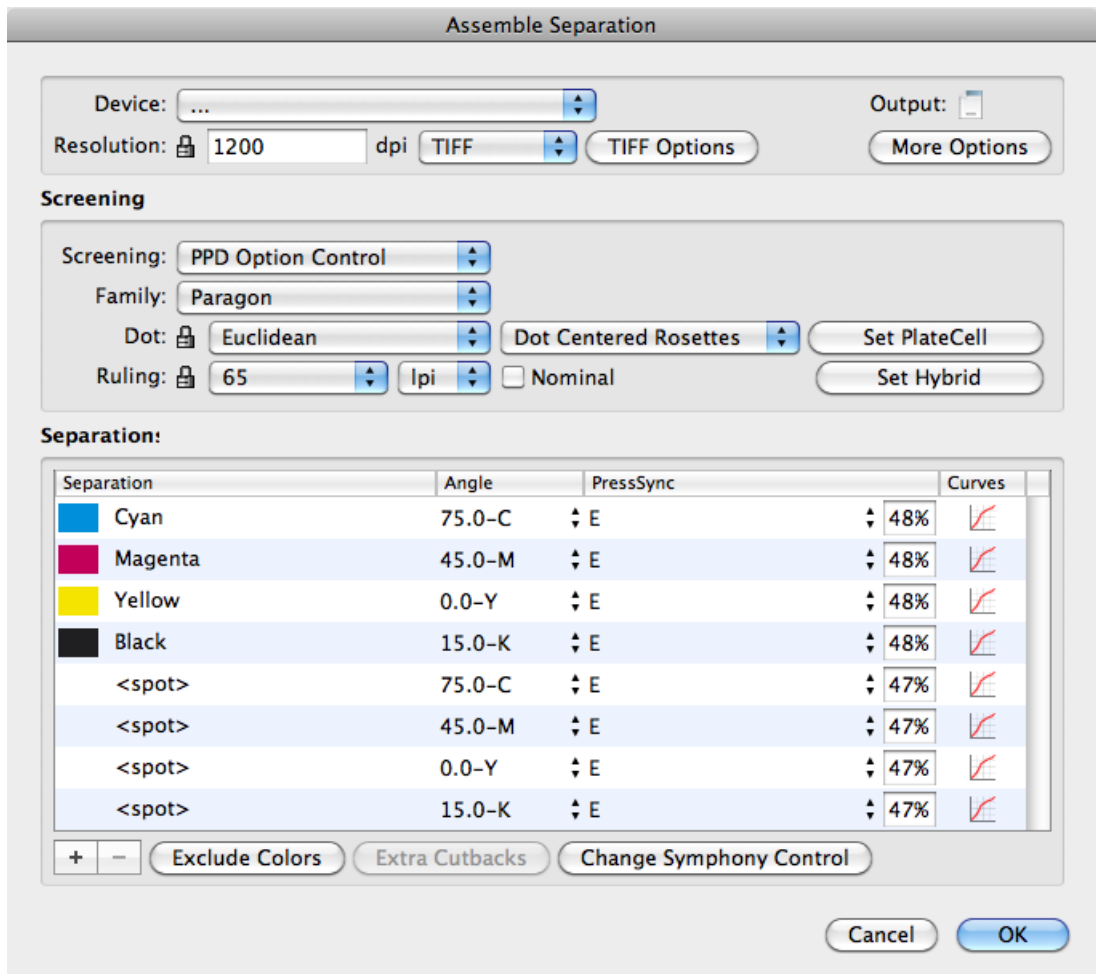
7.2. Using PressSync Curves in Nexus

To use PressSync curves when ripping a job with Nexus, enter them in the **Assemble Separation** activity.

1. Click the **Change Symphony Control** button at the bottom of the dialog.
2. In the **Symphony** tab of the pop-up that opens:
 - a) choose **PressSync** in the **Press** list,
 - b) select the letter (in **Series**) and number (in **Value**) of the PressSync curve to use for most of your inks,
 - c) click **OK**.



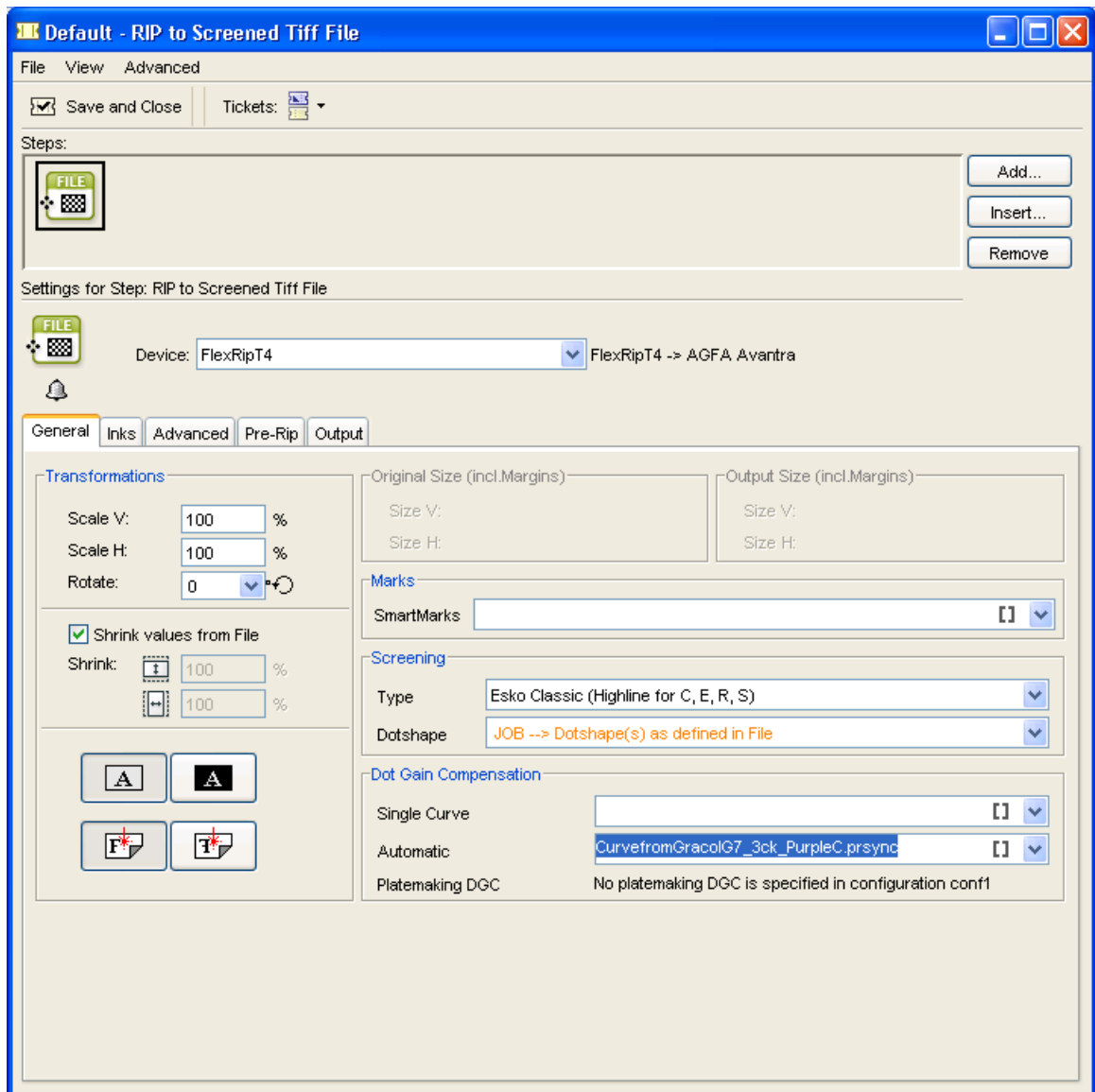
3. You can now see a **PressSync** column in the **Assemble Separation** dialog. Adjust the PressSync curves of the other inks.



7.3. Using a PressSync Curve Set in FlexRip

To use your PressSync curve set when ripping a job with FlexRip, select it in your **RIP ticket** in the Automation Engine Pilot.

- In the **Dot Gain Compensation** area of the RIP ticket, select your PressSync curve set (.pressync) in the **Automatic** list.



7.4. Using PressSync Curve Sets in a Strategy

A **strategy** (.icpro file) is a combination of various curves, which allows you to compensate different cases (different inks, screen rulings, dots, etc.) in a different way.

A strategy can use DGC curves or/and PressSync curve sets. Each curve or curve set is linked to a specific case (for example: round dots + 120 lpi + linework).

For more information about strategies, see the IntelliCurve manual.



Note: You can only create strategies in Curve Pilot, not PressSync Pilot.

To use PressSync curve sets in a strategy:

1. Go to **File > New > Strategy (.icpro)**.
2. Build your strategy: use the buttons at right to create splits for different cases (per ruling/dot/angle/...).

See the IntelliCurve manual for more information.



Note: You shouldn't create splits based on inks as PressSync curve sets already perform ink-based compensation.

3. For each case needing a PressSync curve set:
 - a) click the DGC button and choose to use a PressSync curve set,
 - b) click the **<none>** column in the middle and select the PressSync curve set to use in the list.

You can see the curves of the selected curve set at the bottom of the strategy editor.

Dot Gain Compensation Strategy:

lpi	CT	LW	Curve Set
100			
110			
120	CT		Plate_compensation_26Oct11.prs...
	LW		CurvefromGracolG7_3ck_PurpleC...
133	CT		Plate_compensation_26Oct11.prs...
	LW		CurvefromGracolG7_3ck_PurpleC...
Other Dotshapes			
100		<none>	DGC
110		<none>	DGC
120		<none>	DGC
133		<none>	DGC

PressSync CurveSet:

Name: **CurvefromGracolG7_3ck_PurpleC.prsync** Open...

Separation	Curve Name
Cyan	D 41
Magenta	D 41
Yellow	D 42
Black	G 39
PANTONE Green C	D 45
PANTONE Purple C	E 45
Other Inks	E 46

Graph: Film% vs Job% (10-100)



Note: If you want, you can click **Open...** to open the selected curve set (to check or edit it).

4. Save your strategy under a meaningful name.

8. Viewing Curve Sets in the Preview Combined Curves Tool

The **Preview Combined Curves** tool is useful when working with curve sets and/or strategies. It lets you check which curve of the curve set/strategy will be used in a specific case (ink, ruling, dot...).

It can also simulate what happens when using a combination of curves, for example plate compensation together with press compensation.

8.1. Previewing a PressSync Curve in a Curve Set

1. Go to **Tools > Preview Combined Curves...**
2. Depending on where you will use your PressSync curve set, select it either in the **Automatic Press** or the **Automatic Plate Making** list.
3. In the **Context** area, select the ink whose compensation curve you want to preview:
 - a) in **Ink Group**, select the ink book containing your ink,
 - b) select your ink in **Ink Name**.
4. In the **Curves** area, you will see the name of the PressSync curve that will be used for your ink. You will also see the curve drawn on the graph.

Preview Combined Curves

Find Curves

Rip Dot Gain Compensation

Automatic Press: CurvefromGracolG7_3ck_PurpleC.prsync

Single Curve Press: <none>

Automatic Plate Making: <none>

Plate Processing Simulation: <none>

Context

Images (CT)
 Linework (LW)

Ink Group: PANTONE+ Solid Coated

Ink Name: PANTONE Purple C

Dot Shape: R

Ruling: 120 lpi

Angle: 7.5 °

SambaFlex Details

Resolution: 2400 ppi

Dot Shape: -

Actual Ruling: -

Minimum Dot Size: -

Show stochastic range

Curves

Combined Curves:

Compensation Values:

1	2	3	4	5
0	0	0	0	0
0.39	0.29	0.29	0.29	0.29
0.78	0.59	0.59	0.59	0.59
1.18	0.89	0.89	0.89	0.89
1.57	1.19	1.19	1.19	1.19
1.96	1.49	1.49	1.49	1.49
2.35	1.8	1.8	1.8	1.8
2.75	2.1	2.1	2.1	2.1
3.14	2.41	2.41	2.41	2.41
3.53	2.72	2.72	2.72	2.72
3.92	3.03	3.03	3.03	3.03
4.31	3.35	3.35	3.35	3.35
4.71	3.67	3.67	3.67	3.67
5.1	3.98	3.98	3.98	3.98
5.49	4.3	4.3	4.3	4.3
5.88	4.63	4.63	4.63	4.63
6.27	4.95	4.95	4.95	4.95
6.67	5.27	5.27	5.27	5.27
7.06	5.6	5.6	5.6	5.6
7.45	5.93	5.93	5.93	5.93
7.84	6.26	6.26	6.26	6.26
8.24	6.59	6.59	6.59	6.59
8.63	6.92	6.92	6.92	6.92
9.02	7.26	7.26	7.26	7.26
9.41	7.59	7.59	7.59	7.59
9.8	7.93	7.93	7.93	7.93
10.2	8.27	8.27	8.27	8.27
10.59	8.61	8.61	8.61	8.61
10.98	8.95	8.95	8.95	8.95
11.37	9.3	9.3	9.3	9.3
11.76	9.64	9.64	9.64	9.64
12.16	9.98	9.98	9.98	9.98
12.55	10.33	10.33	10.33	10.33
12.94	10.68	10.68	10.68	10.68
13.33	11.03	11.03	11.03	11.03
13.73	11.38	11.38	11.38	11.38

⚠ This preview is purely informative. Preview values may not coincide with final RIP output. Please read the documentation for details.

8.2. Previewing a PressSync Curve Set in a Strategy

1. Go to **Tools > Preview Combined Curves...**
2. Depending on where you will use your strategy, select it either in the **Automatic Press** or the **Automatic Plate Making** list.
3. In the **Context** area, define the case you are interested in:
 - a) Select either **Images (CT)** or **Linework (LW)**.
 - b) Select the ink book containing your ink in **Ink Group**, and the ink in **Ink Name**.
 - c) Select the **Dot Shape**, **Ruling** and **Angle** you are interested in.

If some of those criteria are not relevant for your case, you don't need to fill them in.
4. In the **Curves** area, you will see the name of the PressSync curve that will be used in the case you defined.

You will see the curve drawn on the graph.

Preview Combined Curves

Find Curves

Rip Dot Gain Compensation

Automatic Press: Dot_Ruling_CTLW_Strategy.icpro

Single Curve Press: <none>

Automatic Plate Making: <none>

Plate Processing Simulation: <none>

Context

Images (CT)

Linework (LW)

Ink Book: process

Ink Name: cyan

Dot Shape: R

Ruling: 120 lpi

Angle: 7.5 °

SambaFlex Details

Resolution: 2400 ppi

Dot Shape: -

Actual Ruling: -

Minimum Dot Size: -

Show stochastic range

Curves

Job% 1

D 41

2

<none>

3

<none>

Digital Film% 4

<none>

Processed Plate% 5

Compensation Values:

1	2	3	4	5
0	0	0	0	0
0.39	0.31	0.31	0.31	0.31
0.78	0.62	0.62	0.62	0.62
1.18	0.94	0.94	0.94	0.94
1.57	1.25	1.25	1.25	1.25
1.96	1.57	1.57	1.57	1.57
2.35	1.88	1.88	1.88	1.88
2.75	2.2	2.2	2.2	2.2
3.14	2.52	2.52	2.52	2.52
3.53	2.83	2.83	2.83	2.83
3.92	3.15	3.15	3.15	3.15
4.31	3.47	3.47	3.47	3.47
4.71	3.79	3.79	3.79	3.79
5.1	4.11	4.11	4.11	4.11
5.49	4.43	4.43	4.43	4.43
5.88	4.75	4.75	4.75	4.75
6.27	5.07	5.07	5.07	5.07
6.67	5.39	5.39	5.39	5.39
7.06	5.71	5.71	5.71	5.71
7.45	6.03	6.03	6.03	6.03
7.84	6.35	6.35	6.35	6.35
8.24	6.67	6.67	6.67	6.67
8.63	6.99	6.99	6.99	6.99
9.02	7.32	7.32	7.32	7.32
9.41	7.64	7.64	7.64	7.64
9.8	7.96	7.96	7.96	7.96
10.2	8.29	8.29	8.29	8.29
10.59	8.61	8.61	8.61	8.61
10.98	8.93	8.93	8.93	8.93
11.37	9.26	9.26	9.26	9.26
11.76	9.58	9.58	9.58	9.58
12.16	9.9	9.9	9.9	9.9
12.55	10.23	10.23	10.23	10.23
12.94	10.55	10.55	10.55	10.55
13.33	10.88	10.88	10.88	10.88
13.72	11.2	11.2	11.2	11.2

Combined Curves:

⚠ This preview is purely informative. Preview values may not coincide with final RIP output. Please read the documentation for details.

8.3. Previewing a Combination of Curves

You can also use the **Preview Combined Curves** to see the compensation that will be applied when using both press and plate curves.

1. Go to **Tools > Preview Combined Curves...**
2. Select the compensation to use:
 - for your press in the **Automatic Press** list,
 - for your plate in the **Automatic Plate Making** list.

You can select `.icpro` strategies, `.prsync` curve sets or legacy `.scredgc` screen-based DGC files.

3. In the **Context** area, define the case you are interested in:
 - a) Select either **Images (CT)** or **Linework (LW)**.
 - b) Select the ink book containing your ink in **Ink Group**, and the ink in **Ink Name**.
 - c) Select the **Dot Shape**, **Ruling** and **Angle** you are interested in.

If some of those criteria are not relevant for your case, you don't need to fill them in.

4. In the **Curves** area, you will see the curves used both on the press and the plate for the case you defined.

On the graph, you will see a curve that is a combination of those two curves.

Preview Combined Curves

Find Curves

Rip Dot Gain Compensation

Automatic Press: Dot_Ruling_CTLW_Strategy.icpro

Single Curve Press: <none>

Automatic Plate Making: CurveSetfromGracolG7_3c+k.prsync

Plate Processing Simulation: <none>

Context

Images (CT)
 Linework (LW)

Ink Book: process

Ink Name: cyan

Dot Shape: R

Ruling: 120 lpi

Angle: 7.5 °

SambaFlex Details

Resolution: 2400 ppi

Dot Shape: -

Actual Ruling: -

Minimum Dot Size: -

Show stochastic range

Curves

Compensation Values:

	1	2	3	4	5
0	0	0	0	0	0
0.39	0.31	0.31	0.06	0.06	0.06
0.78	0.62	0.62	0.41	0.41	0.41
1.18	0.94	0.94	0.77	0.77	0.77
1.57	1.25	1.25	1.13	1.13	1.13
1.96	1.57	1.57	0.89	0.89	0.89
2.35	1.88	1.88	1.25	1.25	1.25
2.75	2.2	2.2	1.61	1.61	1.61
3.14	2.52	2.52	1.98	1.98	1.98
3.53	2.83	2.83	2.34	2.34	2.34
3.92	3.15	3.15	2.71	2.71	2.71
4.31	3.47	3.47	2.46	2.46	2.46
4.71	3.79	3.79	2.83	2.83	2.83
5.1	4.11	4.11	3.2	3.2	3.2
5.49	4.43	4.43	3.58	3.58	3.58
5.88	4.75	4.75	3.95	3.95	3.95
6.27	5.07	5.07	3.69	3.69	3.69
6.67	5.39	5.39	4.07	4.07	4.07
7.06	5.71	5.71	4.45	4.45	4.45
7.45	6.03	6.03	4.83	4.83	4.83
7.84	6.35	6.35	5.21	5.21	5.21
8.24	6.67	6.67	5.6	5.6	5.6
8.63	6.99	6.99	5.33	5.33	5.33
9.02	7.32	7.32	5.71	5.71	5.71
9.41	7.64	7.64	6.1	6.1	6.1
9.8	7.96	7.96	6.49	6.49	6.49
10.2	8.29	8.29	6.88	6.88	6.88
10.59	8.61	8.61	6.61	6.61	6.61
10.98	8.93	8.93	7	7	7
11.37	9.26	9.26	7.39	7.39	7.39
11.76	9.58	9.58	7.79	7.79	7.79
12.16	9.9	9.9	8.18	8.18	8.18
12.55	10.23	10.23	8.58	8.58	8.58
12.94	10.55	10.55	8.3	8.3	8.3
13.33	10.88	10.88	8.7	8.7	8.7
13.72	11.2	11.2	9.1	9.1	9.1

Combined Curves:

⚠ This preview is purely informative. Preview values may not coincide with final RIP output. Please read the documentation for details.

9. Predefined Curve Sets for Printing Standards

Curve Pilot comes with a number of predefined curve sets that you can use to help you match ISO or GRACoL printing standards.

- [*PressSync Templates Based on the ISO 12647 Standards*](#)
- [*PressSync Templates Based on the G7 Calibration Method*](#)