

# What's new for color

Esko Software March 2024 release

Martin Cusack  
Product Manager

# Topics

- AE SaaS support for Pack Proof
- Color Preflight - Equinox
- DFE – AE SaaS
- eXact 2 – Scan mode
- UX Improvements
- Proofers

# AE SaaS support for Pack Proof

# Agent & Proofer



ESKO SAAS

AUTOMATION ENGINE  
Device Agent



Proofer 1



Proofer 2

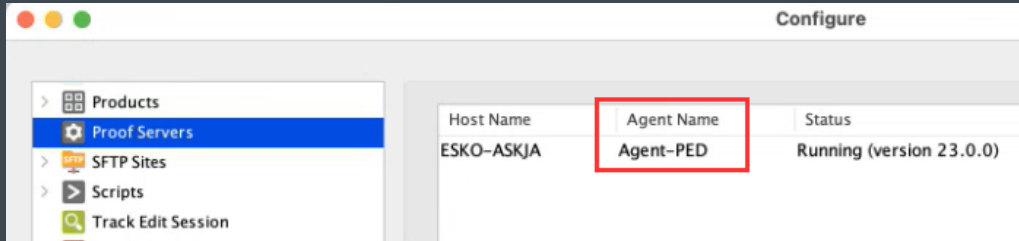
Local Environment

- Agent & Proofer to be on the same network
- You can now send a job to multiple Proofers from a site connected to SaaS, as shown here in Proofer One or Proofer Two
- The Inline Verification report is then sent back to SaaS

# Working with Pack Proof in SaaS

## ■ Setup

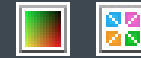
- Installation – Pack Proof
  - Prerequisites might not be required – New Installation
- Configure Color Pilot to SaaS server – Sync Profiles & Strategies
- Install Agent – Create Connection
- Configure ProofServer in Automation Engine



- Send Jobs using AE Ticket
- Files are sent to Proofer

## ■ Existing SaaS User

- Profiles and Strategies are synced already



- Agent Connection – is already done



# Color Preflight

Equinox

# Color Preflight for Equinox

- **ColorPreflight for Equinox workflow**
  - Spot color preflight
  - Printability checks:
    - TAC / Small objects
    - Thin strokes
    - Small text
  - Production file checks:
    - Check for small text with 2 separations

Color Preflight Report
ESKO

**Report Assessment**

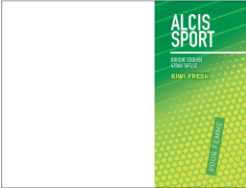
✘ CMYK
 
✔ CMYK0GB

**Preflight Information**

File Name: ALCIS\_SHOWER\_FDR\_HER\_KW1\_hunt.pdf  
 Date: 2011/02/23  
 Time: 16:18  
 Substrate: CP\_EQ\_Offset 7c\_Coated@90gr  
 Press: Press

**Job information - Inks & Separations**

Ink Name	Ink Book
<div style="display: flex; gap: 5px;"> <div style="width: 10px; height: 10px; background-color: green; border: 1px solid black;"></div> 348  <div style="width: 10px; height: 10px; background-color: yellow; border: 1px solid black;"></div> 367  <div style="width: 10px; height: 10px; background-color: orange; border: 1px solid black;"></div> 390           </div>	PANTONE+ Solid Coated PANTONE+ Solid Coated PANTONE+ Solid Coated




**Color Preflight checks**

Printability check	Value	Result	Production file check	Value	CMYK	CMYK0GB
Check if the TAC is more than (%)	270 %	✔	Max. text size with 1 separation	5 pt	✔	✔
Check for objects smaller than	0.25 mm	✔				
Check for strokes thinner than	0.25 mm	✔				
Check for text smaller than	5 pt	✔				

**Spot Color**

Ink Set	Spot Color Name	Status	dE	%C	%M	%Y	%K	%G	%B
CMYK	348	Output Profile	1.40	100.0	0.0	100.0	22.4	-	-
	367	Output Profile	3.23	38.0	0.0	76.1	0.0	-	-
	390	Output Profile	2.13	15.3	0.0	82.4	0.0	-	-
CMYK0GB	348	Output Profile	0.02	10.6	0.0	27.3	0.0	99.2	0.0
	367	Output Profile	0.08	0.4	0.0	64.3	0.8	0.0	34.5
	390	Output Profile	0.69	0.0	0.0	87.5	0.0	11.4	0.0

Confidential - Company Proprietary



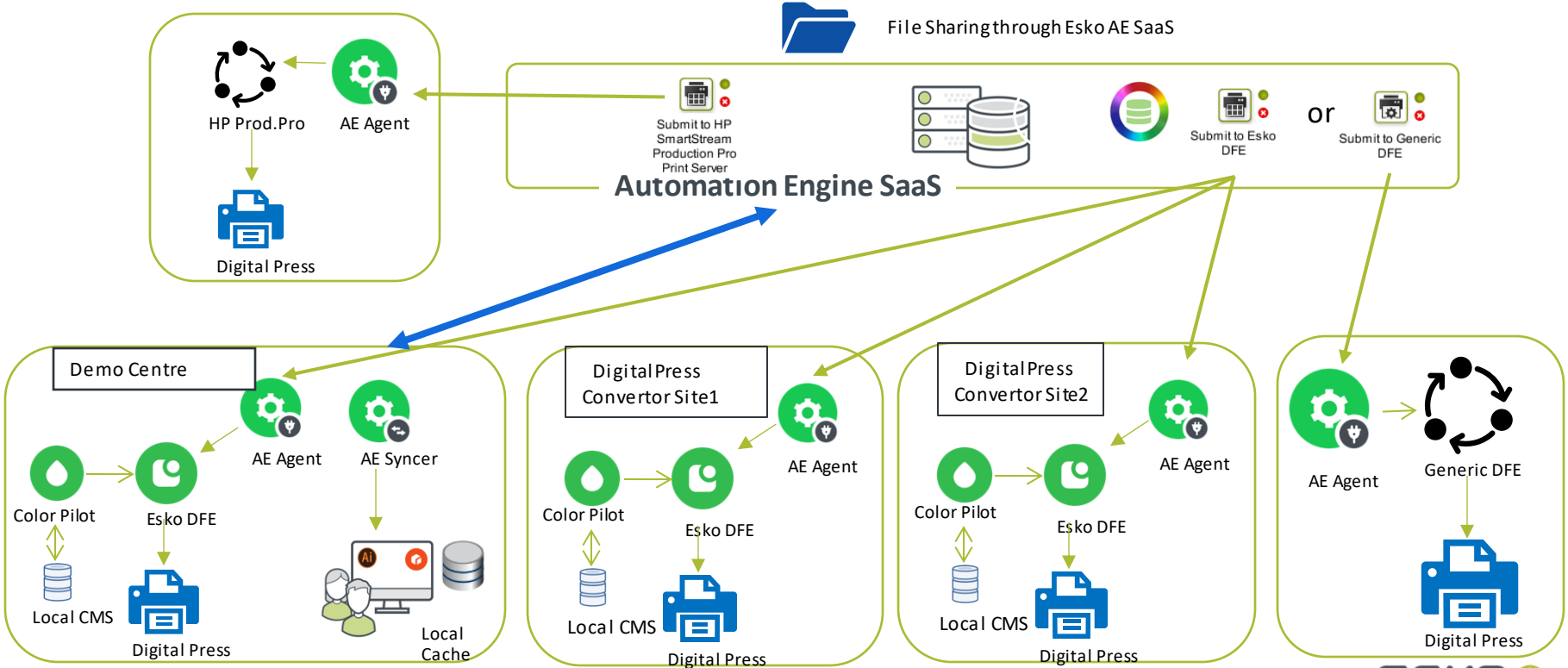
DFE AE SaaS



# DFE AE SaaS

- The User will now be able to...
  - Send jobs from AE SaaS to DFE on premise
  - Helping customers with....
    - File sharing
    - Centralisation of jobs
  - Data will be on premise

# File Sharing & Job Submission from AE SaaS to DFE





exact<sup>TM</sup> 2



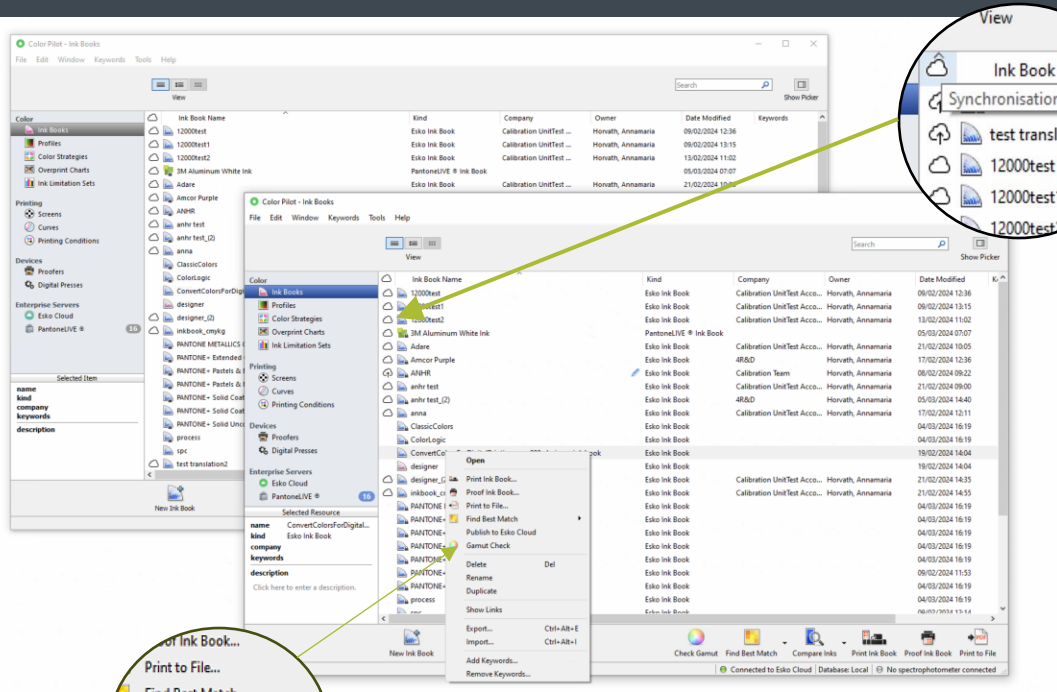
# eXact2 – Scan mode

- The on-board camera provides visual look ahead and color bar recognition.
- Color Pilot will inform the User if measuring too fast.. and ask the User to try again.
- The integrated wheels help the User to seamlessly switch from measuring individual patches to scanning colour bars.
- All models are supported



# UI Improvements

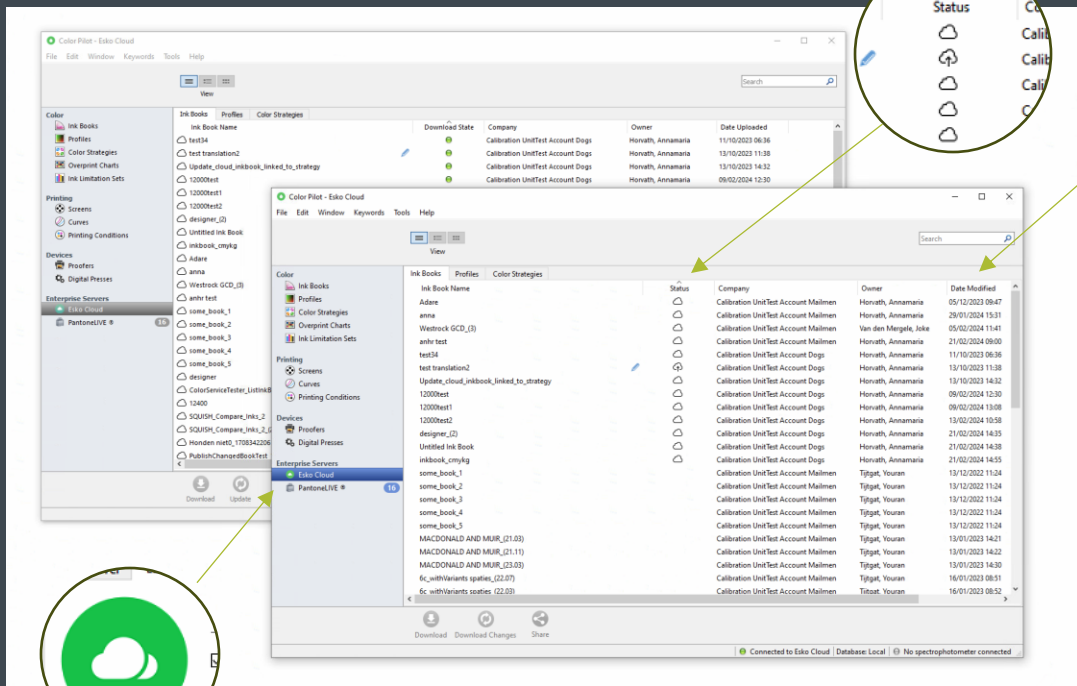
# UI: Icons and Tooltips for Libraries



- “Upload..” is replaced with “Publish..”
- Tooltip Changes
  - Cloud column header shows “Synchronisation Status”
  - For synchronized local cloud resources shows “Synchronized cloud resource”
  - An unlinked cloud resource shows “Unlinked cloud resource”
  - Local cloud resource with local changes shows “Local resource contains modifications that have not been published yet”
- Icon changes
  - Unlinked Ink books and profiles
  - Local cloud resources with changes
  - No change for a Synchronized cloud resource



# Icons and Tooltips for Cloud explorer



- “Download State” renamed to “Status”
- “Traffic lights” replaced with the icons as seen in the Libraries
- Icon changes

No Icon when the resource is available for download  
Resource downloaded and it is up to date  
Resource has been downloaded but the local changes haven't been published  
Resource has been downloaded but is not up to date  
Resource has been downloaded but since been deprecated or is no longer available(only for PantoneLIVE)

When the resource has been deprecated, but was not downloaded(only for PantoneLIVE)



# Proofer



# Proofer Support



## Proofers added for 24.03 :

- Support for the Canon imagePROGRAF TX3100 (*Content quality*)
- Support for HP DesignJet Z6 Pro (*Content quality*)

ESKO\*