

CDI & XPS Crystal Digital Flexo Suite

What's New in 23.11

Jo Scheele

Senior Workflow Specialist

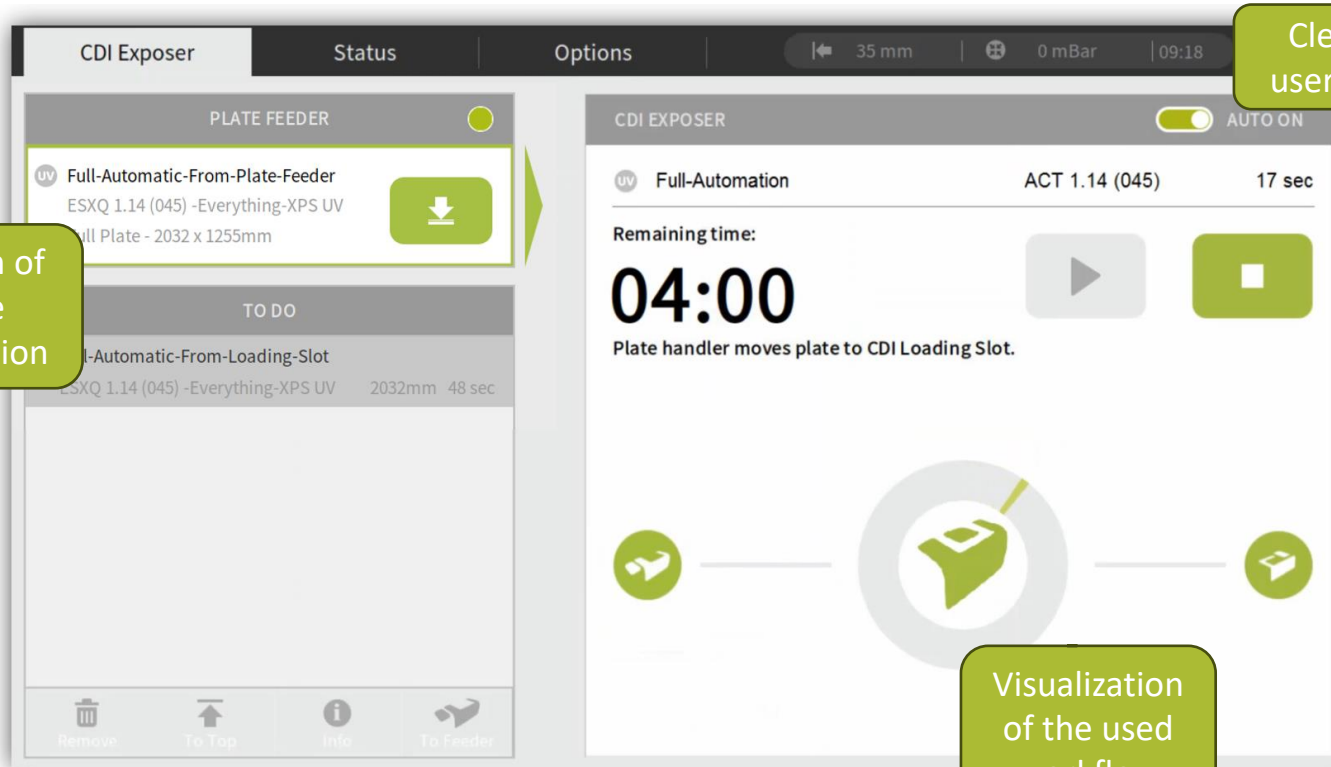
Contents

- CDI Crystal XPS – Improved job progress visualization
- CDI & XPS Crystal – Plate list filter
- CDI & XPS Crystal – Protect plate list
- XPS Crystal – Custom plates
- XPS Crystal Linux – Plate Handler Speed Up
- New Feature - Advanced Free-Cut
- CDI Crystal – Density focus search is mandatory
- Fixed Issues

CDI Crystal XPS

Improved Job Progress Visualization

CDI Crystal XPS – Improved job progress visualization

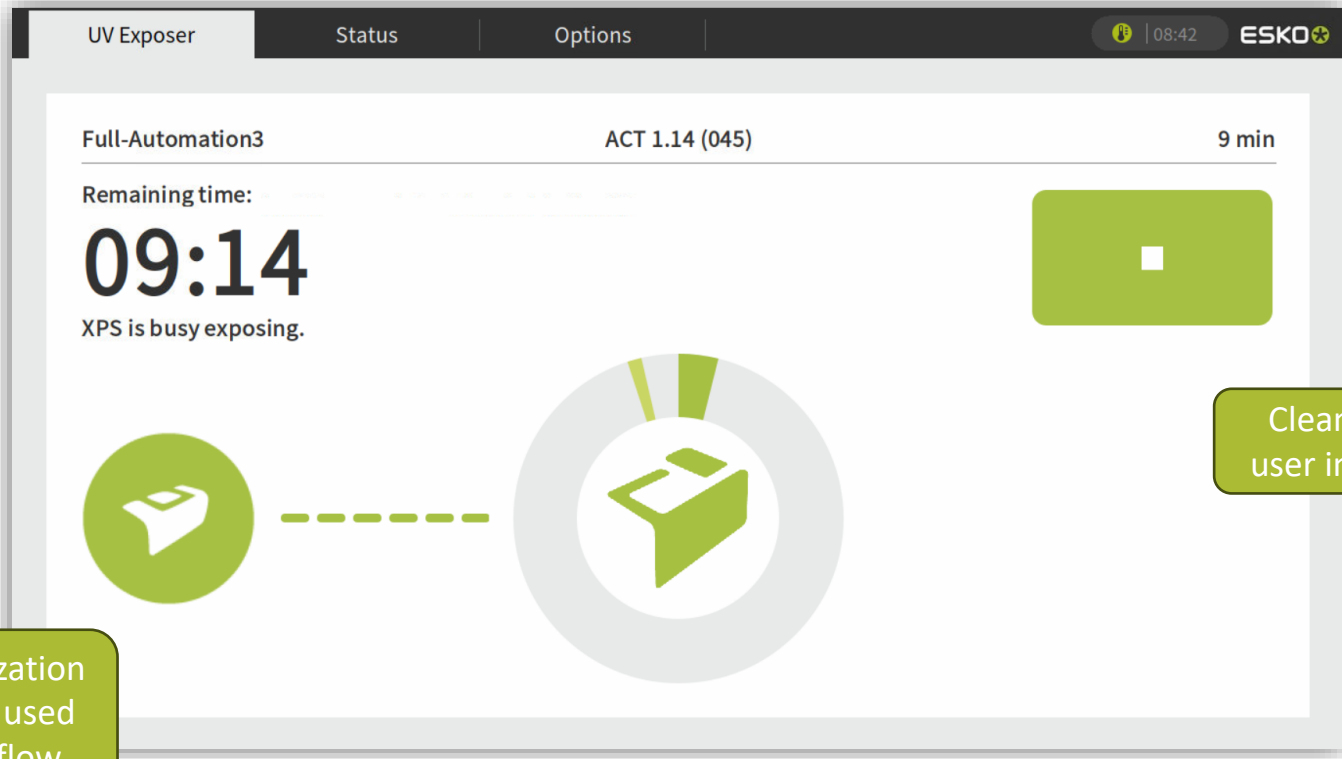


New design of the Plate Feeder section

Clean up of user interface

Visualization of the used workflow

CDI Crystal XPS – Improved job progress visualization



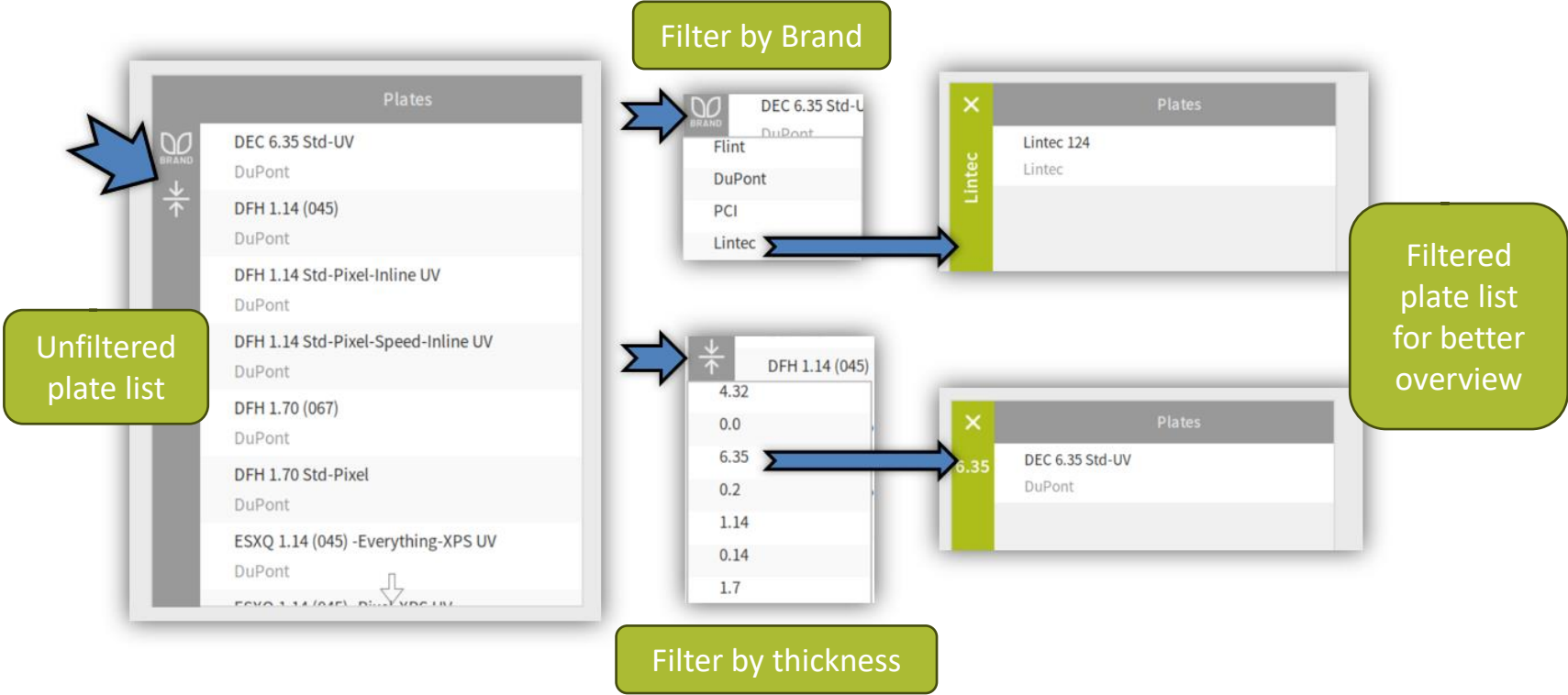
Visualization of the used workflow

Clean up of user interface

CDI & XPS Crystal

Plate List Filter

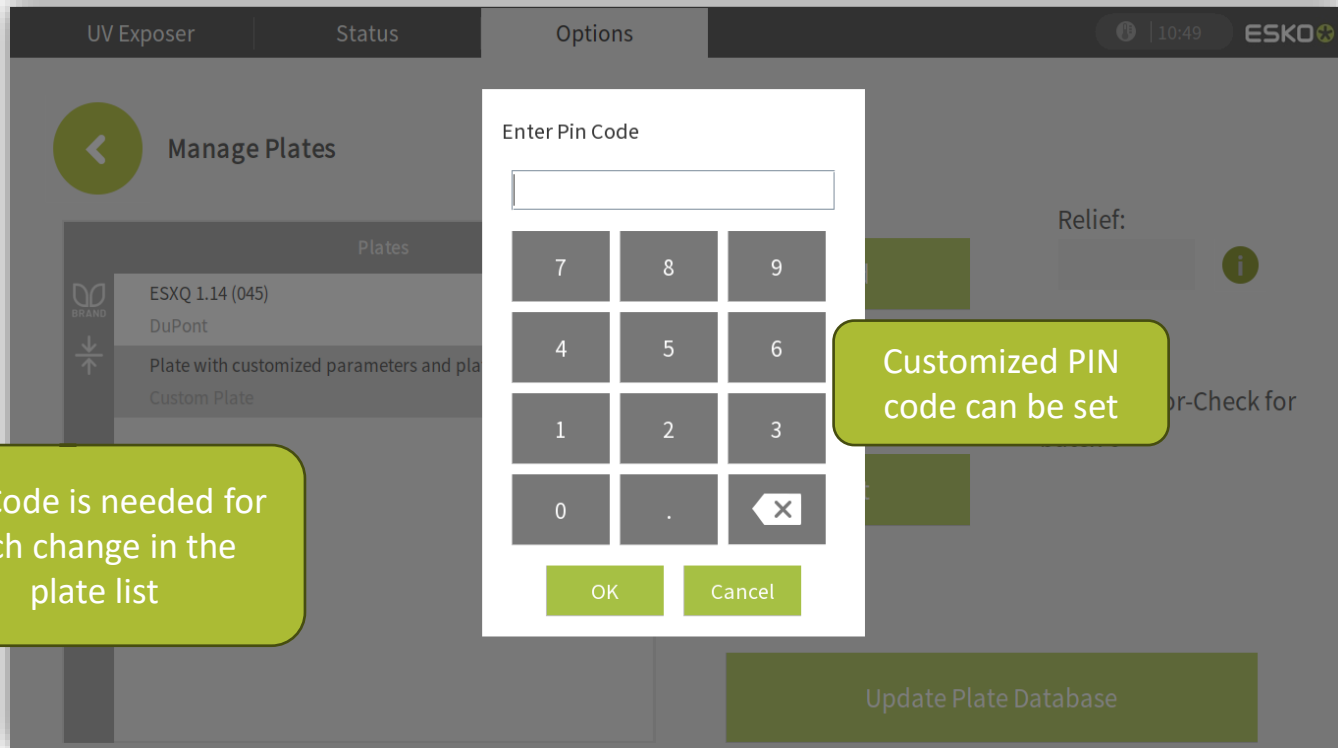
CDI & XPS Crystal – Plate list filter



CDI & XPS Crystal

Protect plate list

CDI & XPS Crystal – Protect plate list




XPS Crystal

Custom plates

XPS Crystal – Custom plates

UV Expose **All plate formats supported** 10:19 ESKO

 Edit UV Parameter

Sequence < 1 >

Plate Name
Plate with customized parameters and plate name **Add**

Plate Thickness:
1.14mm **Individual UV parameter** **Remove**

UV Main Energy 311.0 Exposure time 17.23 **Save Plate**

UV Back Energy 51.0 Passes 5 **Test**

Abort

Individual plate name

Individual UV parameter

XPS Crystal Linux

Plate Handler Speed Up

XPS Crystal – Plate Handler Speed up

- Optimized motor parameters
- Increased plate detection speed
- Increased plate grab speed

New Feature

Advanced Free-Cut

Advanced Free-Cut

- "Advanced Free-CUT" allows the use of free shapes for cutting flexo plates
- Shapes are applied in the PDF file during the design
- Once the Len or Lenx file is loaded the technical ink is used for cutting
- This workflow is applied in the DFS Merger and in the Device Manager 23.11
- Requirements: DFS with cutting module and Staggered Cut license

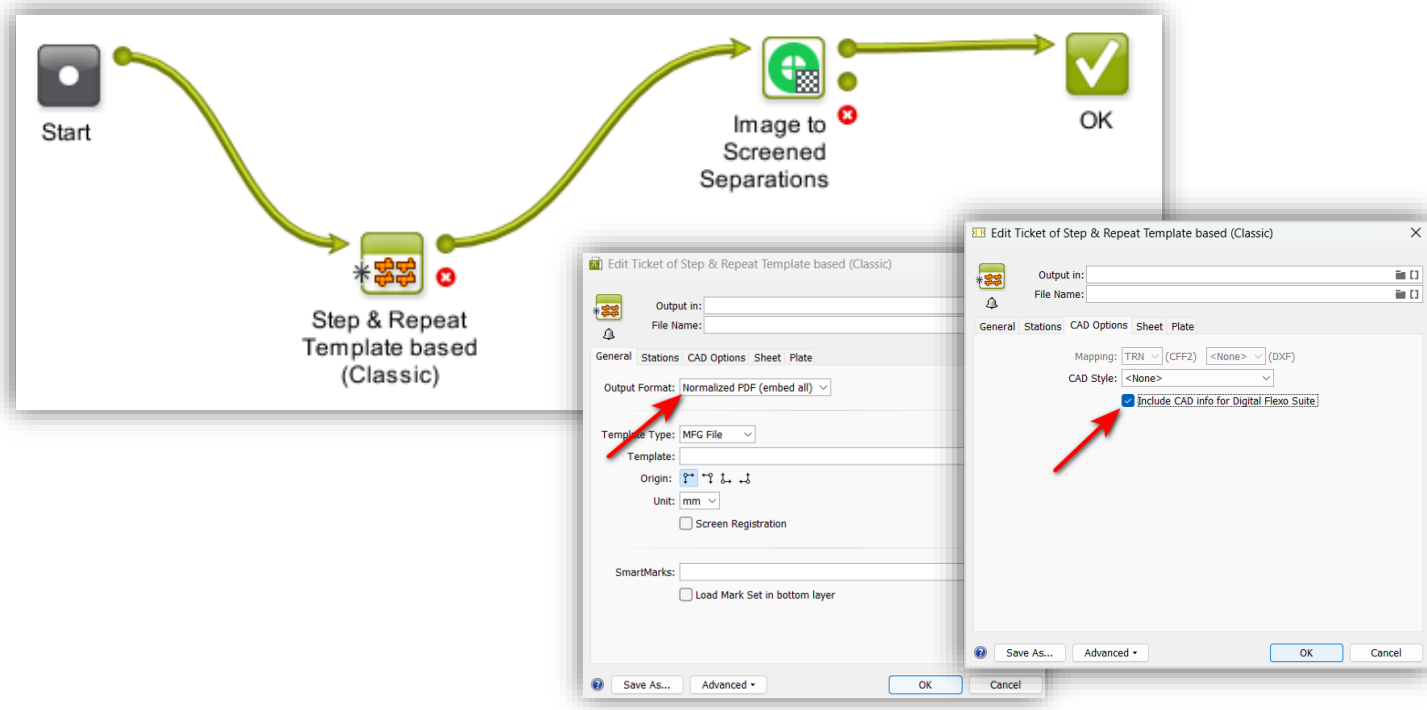
Advanced Free-Cut

- The technical inks in the LEN or LENX file are used for cutting, as long as they match the correct naming scheme

Name	Used in
FREECUT_ALL	all colors
FREECUT_K	File with color name "_K"
FREECUT_C	File with color name "_C"
FREECUT_Y+K+WHITE	Files with color names „_Y“, „_K“ and „_WHITE“

Advanced Free-Cut

- The technical ink is integrated via the "Step & Repeat" module

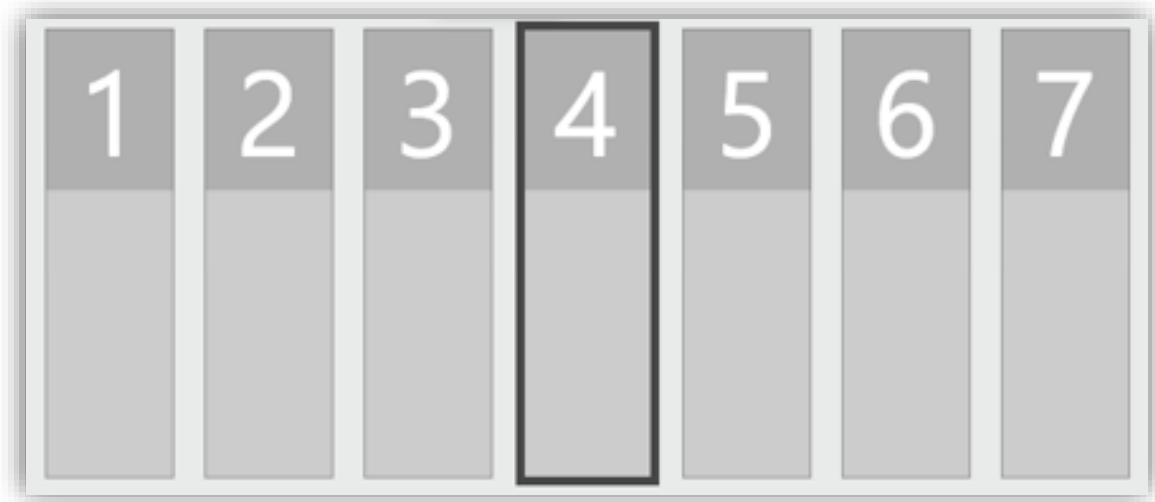


CDI Crystal

Density focus search is mandatory

CDI Crystal – Density focus search is mandatory

- To keep a constant quality the ***Density Focus Search*** is mandatory now
- This avoids operator mistakes in selecting the wrong focus
- The focus is found by measuring the density of 7 tracks



Fixed Issues

Fixed Issues – Grapholas & DFS

- Bitmap Viewer can not open asian files
- Merger: Name of asian files are not displayed correctly
- Merger: Overlay of more than 2 files does not work
- Merger: Plato Staggered Cut - When the len file has more technical inks than Plato Staggered Cut it can lead to errors
- Merger in AE-Mode: Distortion of film is not taken into account when using manual merger in AE mode

ESKO*