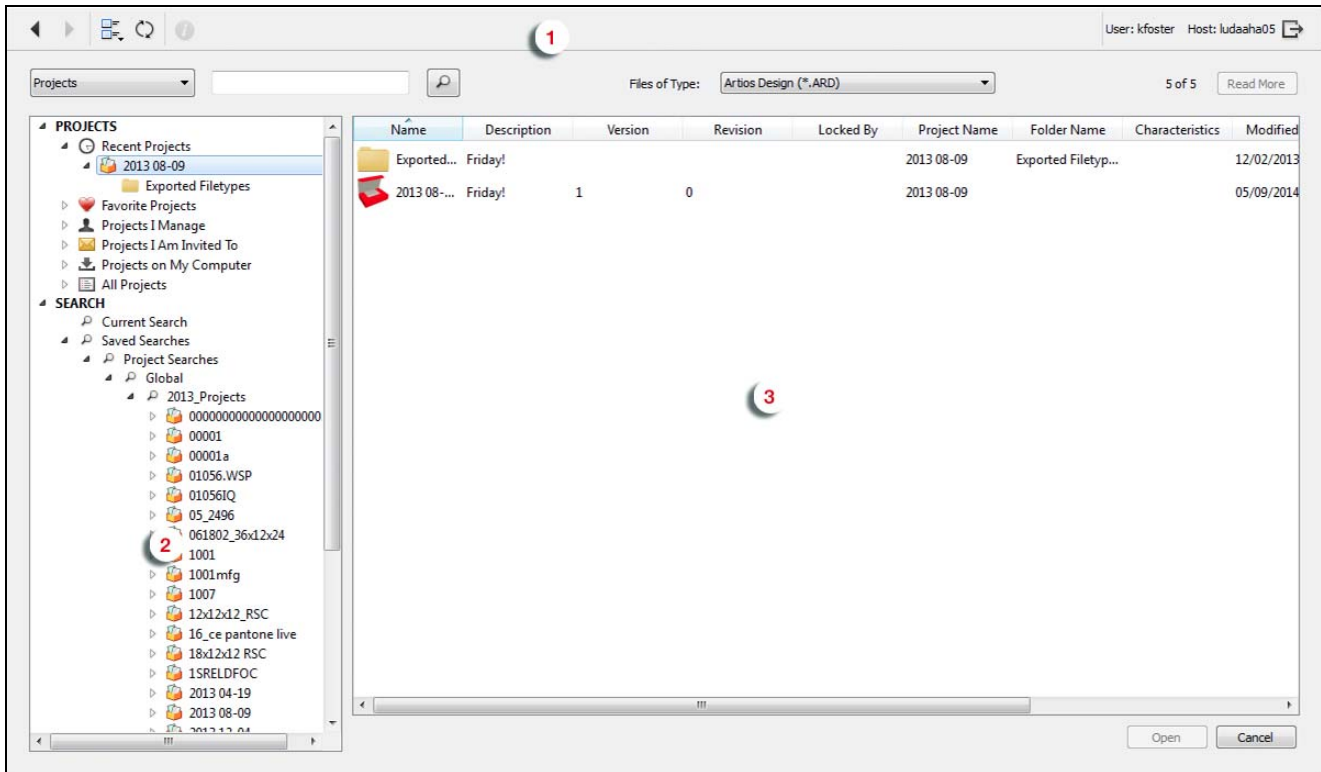


New Features of Cape Pack v2.15

WebCenter Connector

The WebCenter Connector opens native Cape Pack CLF files stored in WebCenter and also allows the upload of designs, JPGs and meta data to WebCenter upon completion of your analysis. The program uses a browser type user interface to allow you to connect to your WebCenter projects.

You can access the WebCenter Connector using the commands on the **File** menu or the **WebCenter** button in the toolbar at Front Menu or Multi-Viewer Graphics.



For more information, see the WebCenter Connector documentation on help.esko.com.

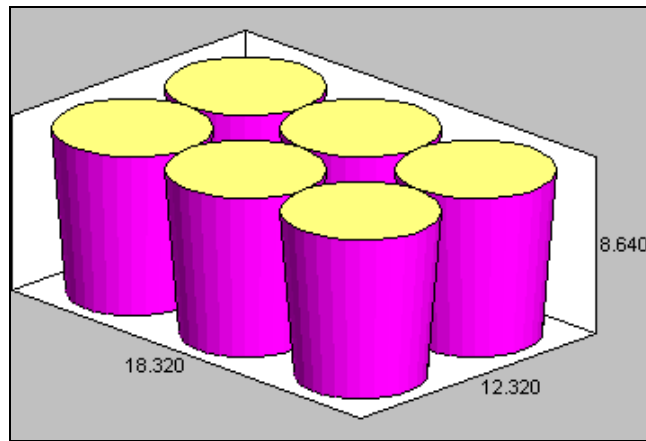
Input Features

Inverted Cylinders

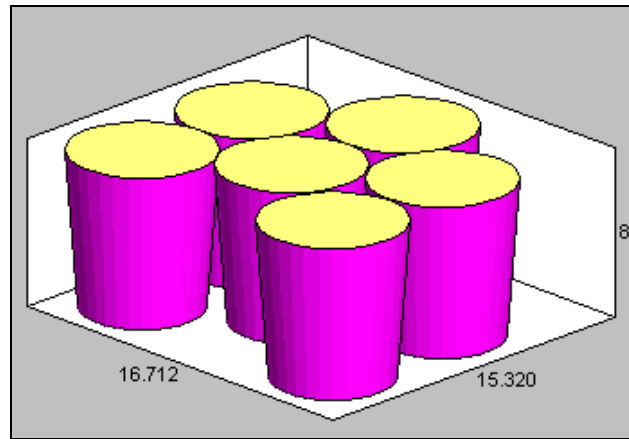
In addition to the row/column patterns and nested patterns Cape Pack offers, we have added inverted cylinders to the program. This option will allow you take full advantage of the space available on your pallet or in your case by inverting cone shaped cylinders and nesting the tapered sides together.

Access this feature from the **Input Settings** button.

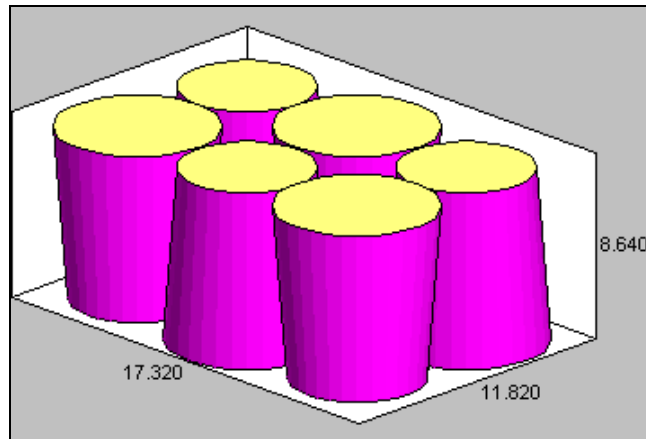
Row/Column



Nested



Inverted



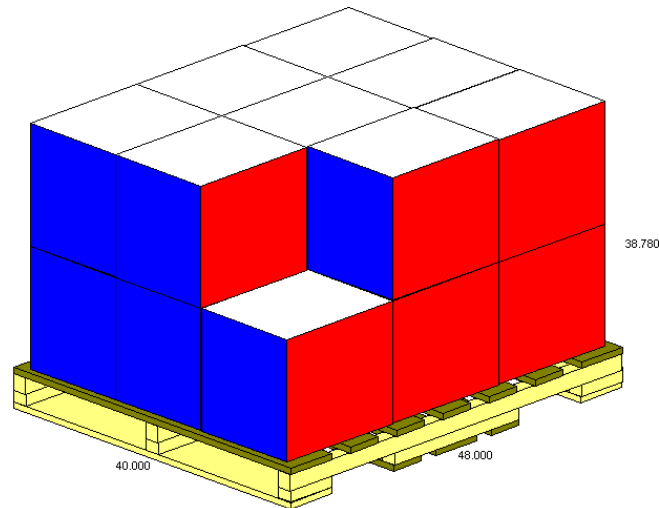
Bundle Wizard Enhancement

The Bundle Wizard in the Arrange/Design Group has been modified to give users better direction for building their bundle configurations. Access the Bundle Wizard from the **Bundle** menu in Arrange or Design Group.

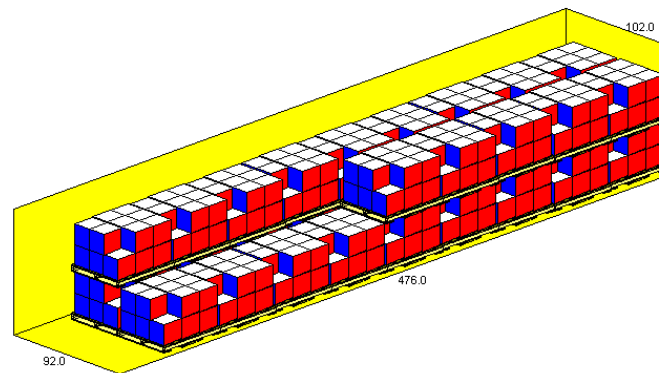
Partial Top Layers

Partial Top Layers is a feature that allows the user to take full advantage of the maximum weight allowed for either the pallet load or the truck load. If the product weight is too great to fully cube out a container or pallet load, the program will give the user options for partial top layers of product until the maximum weight is exceeded.

Pallet load example



Truck load example



Output Features

3D PDF Output

We have added a new feature that allows users to create a 3D PDF file that can be viewed and manipulated in Adobe PDF Viewer. Users can change the view of the pallet load by clicking on it and dragging it to the desired angle.

The feature can be accessed from the 3D PDF button in the toolbar.

Volumetric measurements added to export

We have added the component cube measurements (i.e. cubic feet, cubic meters) to the export for TXT, XML and CSV formats.

Actual Net Weight enabled in FCA

The Actual Net Weight option has been enabled for the Folding Carton Arrange program allowing users to accurately measure the total amount of folded cartons on a pallet or truck load.

ArtiosCAD button added to toolbar

The popular Export to ArtiosCAD feature has been added to the Multi-Viewer Graphics toolbar as an ArtiosCAD button.