

# Automation Engine

Working with Shuttle

06 - 2022

# Contents

- 1. What is Shuttle?..... 3**
- 2. Installing Shuttle..... 4**
- 3. Shuttle Setup..... 5**
  - 3.1. Configuring Shuttle in Automation Engine..... 5
  - 3.2. Making Tickets Public..... 6
  - 3.3. Shuttle Clients connecting from Editors..... 6
  - 3.4. Shuttle Application connecting to Automation Engine..... 6
- 4. Launching the Automation Engine Shuttle..... 8**
- 5. Working with the Automation Engine Shuttle..... 9**
  - 5.1. The Tasks Panel..... 10
  - 5.2. The Launch Panel..... 11
  - 5.3. Launching a Workflow from the Automation Engine Shuttle..... 11
  - 5.4. User Intervention managed from Shuttle..... 13

# 1. What is Shuttle?

---

The Automation Engine **Shuttle** is a client tool for easy submission of files to Automation Engine workflows. Shuttle also allows monitoring these workflows.

This Shuttle technology is also integrated in classic Esko editors and in Adobe Illustrator as a DeskPack plug-in. This enables to launch Automation Engine tasks on the open file from inside these editors.

## ArtPro+

Shuttle functionality is used when ArtPro+ is connected to an on-premises Automation Engine server, and either ArtPro+ or the Automation Engine server is version 22.03 or older. Note that only launching a workflow is available: there is no Shuttle dialog to show progress of the launched jobs from within ArtPro+.

Launching the open document to an Automation Engine workflow is handled by "My Workspace" instead of Shuttle functionality

- when ArtPro+ is connected to an Automation Engine SaaS server, or
- when ArtPro+ is connected to an on-premises Automation Engine server, and both ArtPro+ and Automation Engine are version 22.07 or higher.

For more information on ArtPro+ and its connection to Automation Engine, we refer to the ArtPro+ documentation [here](#)

## DeskPack

Connection to an Automation Engine server from Adobe Illustrator is handled by the **Adobe Illustrator Client plugin**.

Shuttle functionality is used when **Adobe Illustrator Client plugin** is connected to an on-premises Automation Engine server, and either **Adobe Illustrator Client plugin** or the Automation Engine server is version 22.03 or older.

Connection to an Automation Engine workflow is handled by "My Workspace" and "Launch Workflow" instead of Shuttle functionality when both **Adobe Illustrator Client plugin** and Automation Engine are version 22.07 or higher.



**Note:** When **Adobe Illustrator Client plugin** version 22.03 or lower is connected to an Automation Engine SaaS server, you can use the **Tasks** palette to monitor tasks run on the Automation Engine server. For more information, see the Adobe Illustrator Client documentation version 22.03 [here](#)

For more information on **Adobe Illustrator Client plugin**, we refer to its documentation [here](#)

For more information on My Workspace, we refer to the Automation Engine documentation [here](#) and the Blended Learning modules [here](#).



**Note:** When this documentation was updated in 2020, all information on integrating Shuttle with legacy applications Nexus and Odystar was removed. If needed, you can still find this information in [older versions of the Shuttle user guide](#).

## 2. Installing Shuttle

---

The Shuttle is one of the client tools that you can download from an Automation Engine browser client:

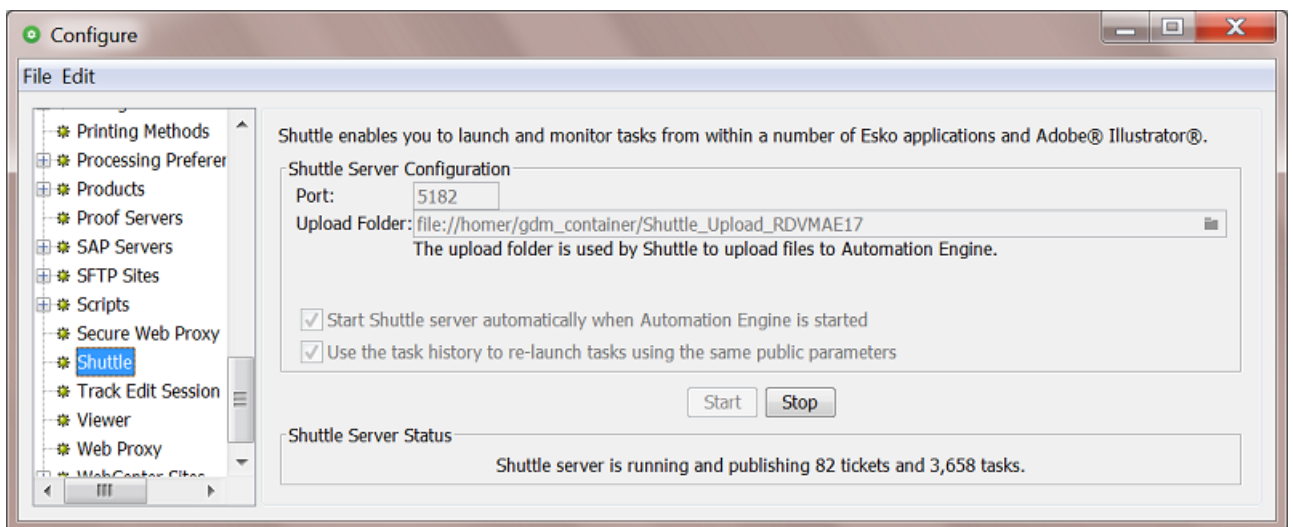
In a browser, go to `http://<AEserverName>:9000/#/downloads` .

If the Shuttle application is already installed on your computer, the system will check if you have the appropriate version and download any updates if necessary.

## 3. Shuttle Setup

### 3.1. Configuring Shuttle in Automation Engine


1. In the **Pilot**, go to **Tools > Configure**.
2. Select **Shuttle**.



3. Enter the **Port** to use for communication between your Automation Engine server and the Shuttle clients.



**Note:** By default this is port 5182. If this port is already used by other processes, enter the next available port.

4. Click on  and select an **Upload Folder**.

This is where Shuttle clients will upload files that were not yet located in a Container, for example a file that you drag and drop from the desktop of a Mac (except the DeskPack Shuttle plug-in, that will always upload files to the **DeskPackContainer**).



**Note:** The **Upload Folder** must be located in a Container.

5. Select '**Start Shuttle server automatically when Automation Engine is started**' if you plan to make frequent use of the Shuttle technology.
6. Select '**Use the task history to re-launch using the same public parameters**' if you want Shuttle to propose to use the same public parameters when you launch a same file on the same workflow. The Shuttle then checks prior tasks, not just those shown in a Tasks overview pane but also those present in the [Task History](#) tool.
7. Click the **Start** button to start **Shuttle server**.

The Shuttle server then makes Automation Engine’s workflows, tasks and files accessible to the Shuttle clients.

8. Save your settings.



**Note:** To make changes to this setup, you must first **Stop** the **Shuttle server**.

## 3.2. Making Tickets Public

---

Only Public tickets (of single tasks or workflows) can be launched from Shuttle (or from the [client applications using Shuttle](#)).

Learn about making (workflow) tickets public [here](#).



**Note:** Default tickets and (blue) Job tickets can not be made public.

## 3.3. Shuttle Clients connecting from Editors

---

1. In the editor, open the **Preferences**.

In...	go to...
<b>ArtPro+</b>	<b>Edit &gt; Options &gt; Automation Engine</b>
<b>Adobe Illustrator</b>	<ul style="list-style-type: none"> <li>• (Mac) <b>Illustrator &gt; Preferences &gt; Esko &gt; Shuttle Preferences...</b></li> <li>• (Windows) <b>Edit &gt; Preferences &gt; Esko &gt; Shuttle Preferences...</b></li> </ul>
<b>ArtPro</b>	<b>ArtPro &gt; Preferences...</b> or use <b>Command + K</b>
<b>PackEdge/Plato</b>	(Windows) <b>Edit &gt; Preferences &gt; Server&amp;Resources</b>
<b>FastImpose Standalone</b>	<b>Tools &gt; Shuttle Preferences...</b>

2. Fill in the name of the Automation Engine server.

3. Enter your **User Name** and **Password**.

Enter a **User Name** and **Password** that is also valid to sign in to a Pilot.

You will have the same access rights in Shuttle as you have in the Pilot (for example the right to change processing priorities).

## 3.4. Shuttle Application connecting to Automation Engine

---

1. Launch the Shuttle application.
2. You will be asked to sign in to an Automation Engine server

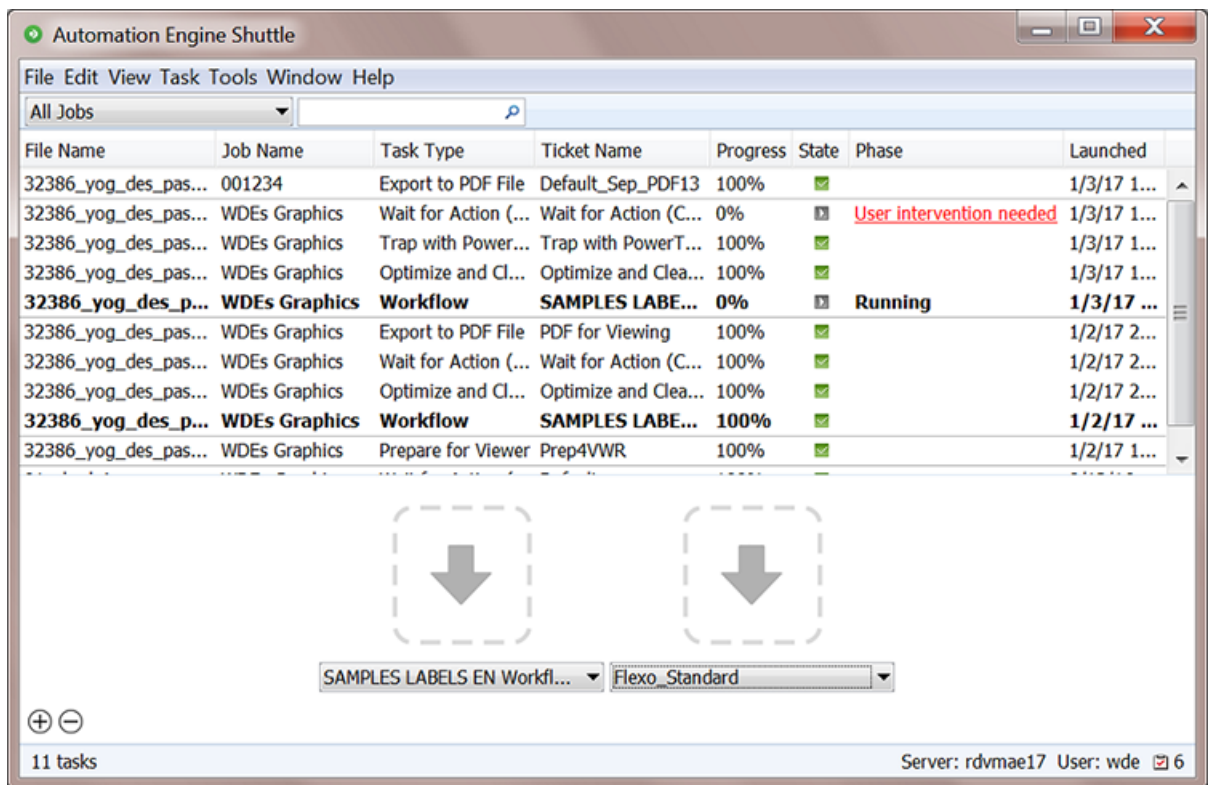
Sign in in the same way as you would do for a Pilot. Learn more in [Signing In to the Pilot or Shuttle](#).



**Tip:** If, on that same computer, you are already signed in to a Pilot or another Shuttle client (possibly from within an editor), the system will check what you selected in **Pilot > Configure > Login automatically with user name and password from other application connected to the server**.

## 4. Launching the Automation Engine Shuttle

When you launch the Shuttle application, the window shows a list of launched **Tasks** and a **Launch Panel** where you can define one or multiple drop areas that each launch a specified workflow:



- To open a new window, go to **File > New Window**. You could use dedicated Shuttle windows for each of your Workflows.
- Use the **View** menu to hide or show parts of this window:
  - **View > Tasks** hides/shows the Tasks panel.
  - **View > Launch Panel** hides/shows the Launch panel.
  - **View > Status Bar** hides/shows the Status bar indicating the progress.
- When closing, Shuttle saves the settings of the windows.



## 5. Working with the Automation Engine Shuttle

---

Starting the Shuttle will ask you to login to the Automation Engine server.



**Note:** Whether this user can also start up a Pilot is decided by a specific **User Access Right**. Learn more in [Access Rights](#).

### Menu items

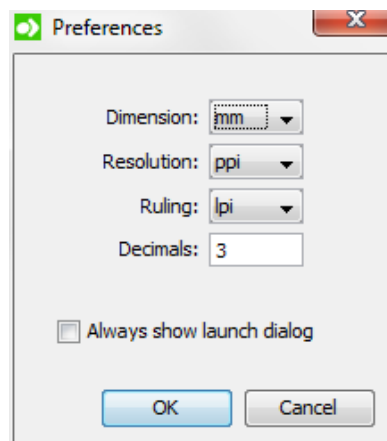
- **File:** To launch one or more files on the one defined workflow (after browsing for files), or to open and close Shuttle windows.
- **Edit:** To cut, copy or paste text in the search field. To select and delete tasks. Or to define **Preferences** (see below).
- **View:** To show or hide the Tasks pane, the Launch panel and the Status Bar.
- **Task:** To open or show the output file of the selected Task, to release or cancel the Task, or to add Annotations and show the task's Details.
- **Tools:** To open the **To Do List**.
- **Window:** To minimize, zoom or switch between Shuttle windows.
- **Help:** To see the **About** window or to access this online documentation.

### Setting the Preferences for Shuttle

On Mac, select **Preferences...** in the **Application** menu. On Windows, go to **Edit > Preferences...**

In the **Preferences** dialog, set the units for **Dimension**, **Resolution**, **Ruling** and the number of **Decimals** to use.

Select '**Always show launch dialog**' if you want to see the **Public Parameter** dialog when starting a new task, even if there aren't any public parameters. This allows you to change these parameters before launching the task.



## 5.1. The Tasks Panel

The **Tasks** panel is the part that shows the Automation Engine tasks that were launched both from Shuttle and Pilot clients. One row represents or a single task or one step of a workflow.

You can filter the displayed list tasks:

- By filtering on a Job context from the Job selected from the drop-down list in the toolbar.  
Select **Other...** if you want to select a Job other than the recently used ones in the list. Select **All Jobs** to clear the current filter.
- By typing in a value in the filter. Learn more about creating filters in [Using Filters](#).



**Note:** In Shuttle, you cannot open or edit a task. This is only possible in a Pilot.



**Tip:** You cannot hide the columns displayed in the Task's pane. However, you can change their order and width.

### Tasks asking for User Intervention

Workflows that including a [Wait for Action](#) task will show when they reached this step in the column **Phase**. This allows the Shuttle user to intervene and decide how the workflow continues.

Repeat and Export to Normalized PDF File						
File Name	Job Name	Task Type	Progress	Phase	State	Launched
OmNom.ai	mabm	Wait for...	0%	User intervention	▶	10/30/12 5:15...
OmNom.ai	mabm	Workflow	0%	Running	▶	10/30/12 5:15...
Screen Shot 20...		Wait for...	0%	User intervention	▶	10/30/12 5:14...
Screen Shot 20...		Workflow	0%	Running	▶	10/30/12 5:14...
arrow.png		Workflow	100%		✖	10/30/12 10:5...
arrow.png		Workflow	100%		✖	10/30/12 10:5...
Screen Shot 20...		Wait for...	0%	User intervention	▶	10/30/12 9:16...
Screen Shot 20...		Workflow	0%	Running	▶	10/30/12 9:16...

To intervene,

- Click on the **User intervention needed** link.
- In the resulting **To Do** window, choose to **Forward** or **Release**. Learn more in [User Intervention managed from Shuttle](#) on page 13.

### Context menu options

Right-click on a task to access these options:

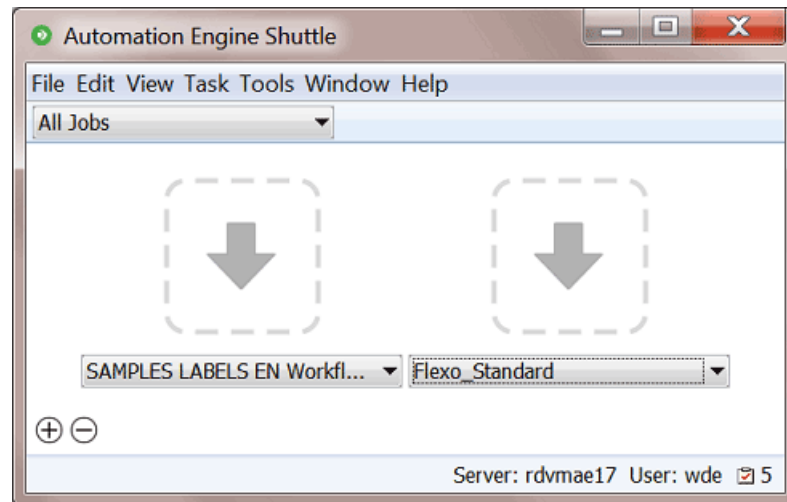
- **Open Output File:** To open the task's output file with the appropriate application (if possible).
- **Show Output File in Finder / Explorer:** To see the folder that contains the output file in (Mac) Finder or (Windows) Explorer.
- **Release:** To release a task that is on hold.
- **Cancel:** To cancel a running task.
- **Delete:** To delete a finished task. You will be asked to confirm.
- **Annotation...:** To add or modify an annotation.
- **Details:** To see a dialog with detailed information about the task (step).



**Tip:** These options are also available via the **Task** menu.

## 5.2. The Launch Panel

The Launch Panel is where you drop one or multiple files as input files for that workflow. Each drop area is indicated with a large arrow and serves to launches one selected workflow.



- Click **+** to add an extra drop area.



**Note:** To remove a drop area:

- Click **-**. This changes the user interface in editing mode.
  - Click **✕** on the top left corner of the drop area that you want to delete.
  - To leave the editing mode, click again on **-** or press **Escape**.
- Below each drop area, select the desired workflow from the drop-down list.



**Attention:** Only **Public** tickets are listed.



**Note:** The drop areas and their assigned workflow are saved when you close Shuttle.

## 5.3. Launching a Workflow from the Automation Engine Shuttle

1. If the Launch Panel is not visible in the Shuttle window, go to **View > Launch Panel**.

2. Submit one or more files in one of these ways:

- Drag and drop the desired file(s) onto a drop area.
- Go to **File > Launch...** and select the files.
- Use the keyboard shortcut **CMD-L** (Mac) or **Ctrl-L** (Windows) and select the file(s).

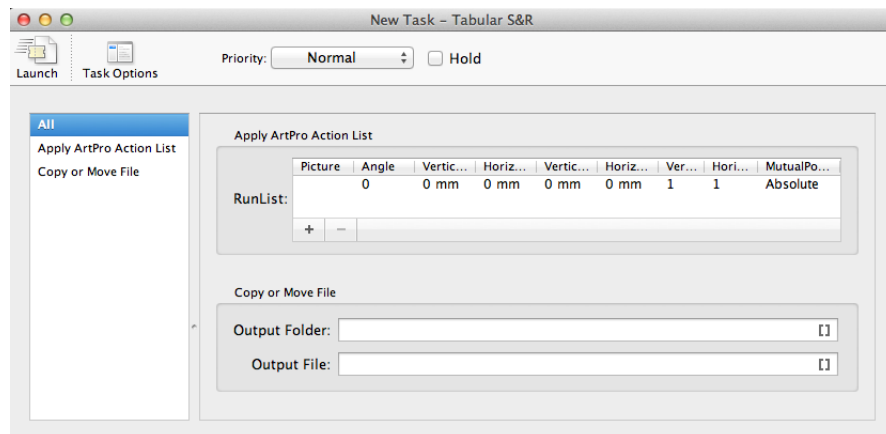


**Note:**

- If a file was previously launched on the same workflow, a dialog will open and ask if you want to reuse the public parameter values from the previous launch. If you choose to reuse these values, they will be used as default parameter values. You can still edit these values if necessary.
- The selected file(s) will be uploaded to the root folder of the selected Job. When no Job is selected, it will be copied to the **Upload Folder** defined in the [Configure panel](#).
- If a file with the same name is already present in the upload folder, a dialog will warn you about overwriting the file. You can then choose to either **Replace** the existing file, or **Cancel** the launch.

3. If the workflow has Public Parameters, the **New Task** dialog will ask you to fill them in. Learn more in [Using Public Parameters in Workflows](#).

An example:



a) Click **Task Options** to define general task options. You can:

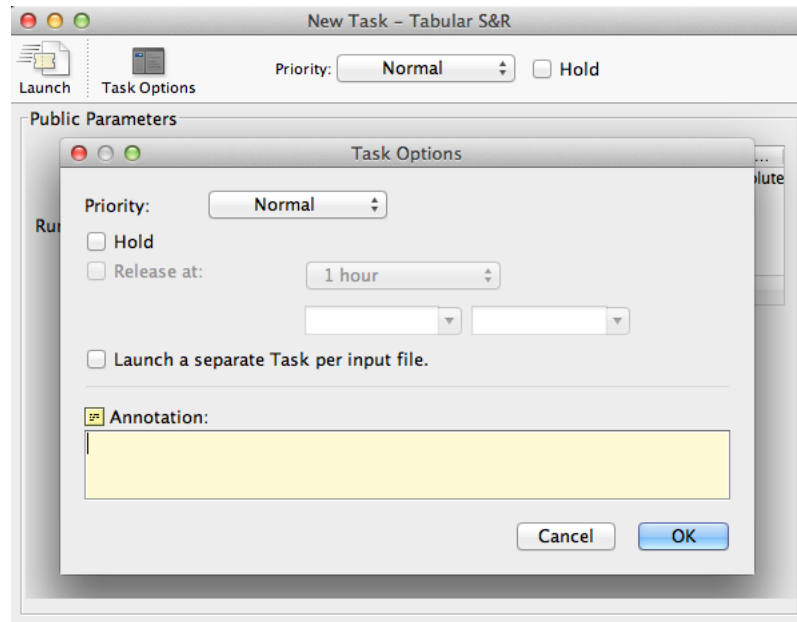
- Set the **Priority** of the task (**Low**, **Normal**, **High** or **Immediate**).
- Select **Hold** to keep the task from being launched until someone releases it (via a right-click or via the **Task** menu).

Alternatively, use **'Release at'** to hold the task until a specific time, after which it will automatically be released.



**Note:** You can later change this automatic release setting by selecting **Release** via the right-click menu in the Tasks panel or via the **Task** menu.

- Select '**Launch a separate Task per input file**' to launch a separate task or workflow for each input file.
- You can also set an **Annotation** for the task.

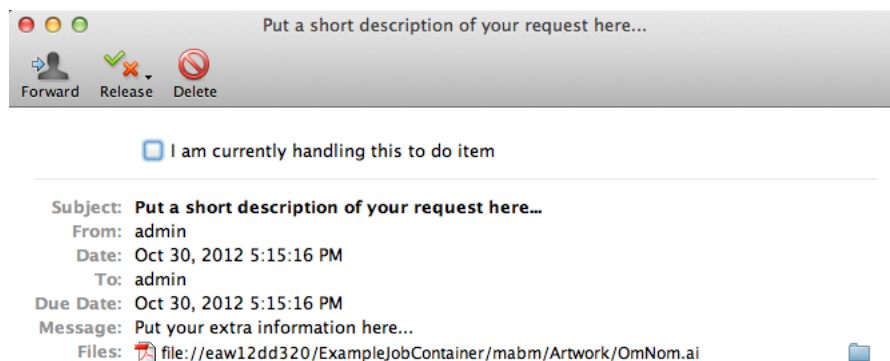


4. Click **Launch** to launch the workflow.  
The task will immediately appear in the Tasks panel.

## 5.4. User Intervention managed from Shuttle

When the launched workflow contains a *Wait for Action (Checkpoint)* step, a **User intervention needed** link appears in the Tasks panel when that workflow step is reached..

1. Click on the **User intervention needed** link to open the **To Do** dialog.



2. Optionally, select '**I am currently handling this to do item**' to mark that you are handling this item (other users are so also informed).
3. Decide how you want to **Release** this item. The offered choices are those that were decided in the ticket of the 'Wait for Action (checkpoint)' task.  
Select the wanted output state. The **To Do** window will close and the workflow will continue processing.
4. In stead of releasing the item, you could **Forward** or **Delete** it.
  - Click **Forward**, choose the user and set other details. The other user then needs to decide how and when the workflow continues.
  - Click **Delete** to delete this item and also end the processing of the workflow.