

# Automation Engine

Working with Shuttle

08 - 2018

# Contents

- 1. What is Shuttle?..... 3**
- 2. Installing Shuttle..... 4**
- 3. Shuttle Setup.....5**
  - 3.1. Configuring Shuttle in Automation Engine..... 5
  - 3.2. Making Tickets Public.....6
  - 3.3. Shuttle Clients Connecting to Any Server..... 6
  - 3.4. Shuttle Clients Connecting only to Automation Engine.....8
- 4. Launching the Automation Engine Shuttle.....9**
- 5. Working with the Automation Engine Shuttle..... 10**
  - 5.1. The Task Monitor..... 11
  - 5.2. The Shuttle Launch Panel..... 12
  - 5.3. Launching a Workflow from the Automation Engine Shuttle..... 12
  - 5.4. User Intervention from the Shuttle..... 14

# 1. What is Shuttle?

---

The Automation Engine **Shuttle** is a client tool for easy submission of files to Automation Engine workflows. Shuttle also allows monitoring of the workflows.

The Shuttle functionality is also integrated in ArtPro, Neo, PackEdge, Plato, FastImpose and in Adobe Illustrator as a DeskPack plug-in. This enables to launch tasks from inside these editors. This setup is described in [this documentation](#).

## 2. Installing Shuttle

---

The Shuttle is one of the client tools that you can download with the **Automation Engine Server Web Page**.

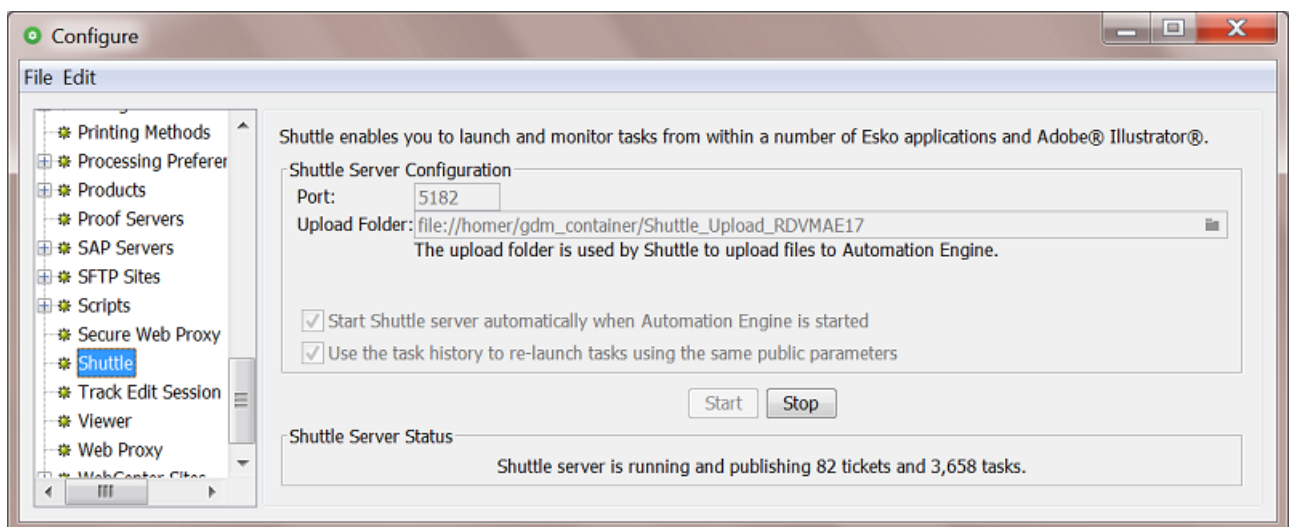
Open this **Server Web Page** by entering `http://<name of your master server>` or `http://<name of your master server>:9999` in the address field of your browser. You can find this tool in the section **Client Apps**, in the page **Main**.

If the Shuttle application is already installed on your computer, the system will check if you have the appropriate version and download updates if necessary.

## 3. Shuttle Setup

### 3.1. Configuring Shuttle in Automation Engine

1. In the **Pilot**, go to **Tools > Configure**.
2. Select **Shuttle** in the left pane.



3. Enter the **Port** to use for communication between your Automation Engine server and the Shuttle clients.

**Note:** By default this is port 5182, but if this port is already used by other processes, you should enter the next available port.

4. Click on  and select an **Upload Folder**.

This is where Shuttle clients will upload files that are not located in a Container (except the Shuttle plug-in, that will always upload files to the **DeskPackContainer**).

**Note:** The **Upload Folder** must be located in a Container.

5. Select '**Start Shuttle server automatically when Automation Engine is started**' if you plan to make frequent use of the Shuttle technology.
6. Select '**Use the task history to re-launch using the same public parameters**' if you want Shuttle to propose to use the same public parameters when you launch a same file on the same workflow. The Shuttle then checks prior tasks both in the Tasks Monitor and in the [Task History](#) tool.
7. Click the **Start** button to start **Shuttle server**.

The Shuttle server now makes Automation Engine’s workflows, tasks and files accessible to the Shuttle clients.

8. Save your settings.

**Note:** If you need to make changes to this Setup, you must **Stop** the **Shuttle server** first.

### 3.2. Making Tickets Public

Only Public tickets (of single tasks or workflows) can be launched from Shuttle (or from the [client applications using Shuttle](#)).

Learn about making (workflow) tickets public [here](#).


**Note:** Default tickets and (blue) Job tickets can not be made public.

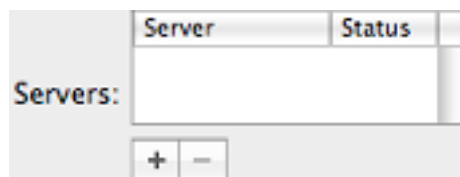
### 3.3. Shuttle Clients Connecting to Any Server

The Shuttle (in all its forms) can connect to one or more Automation Engine servers.

1. Launch Shuttle (standalone or the editor plug-in).
2. Open the **Preferences**.

In...	go to...
<b>Adobe Illustrator</b>	<ul style="list-style-type: none"> <li>• (Mac)<b>Illustrator</b> &gt; <b>Preferences</b> &gt; <b>Esko</b> &gt; <b>Shuttle Preferences...</b></li> <li>• (Windows) <b>Edit</b> &gt; <b>Preferences</b> &gt; <b>Esko</b> &gt; <b>Shuttle Preferences...</b></li> </ul>
<b>ArtPro</b>	<b>ArtPro</b> > <b>Preferences...</b> or use <b>Command + K</b>
<b>PackEdge/Plato</b>	(Windows) <b>Edit</b> > <b>Preferences</b> > <b>Server&amp;Resources</b>
<b>Neo</b>	<b>Neo</b> > <b>Preferences...</b> or use <b>Command + , (comma)</b>
<b>FastImpose Standalone</b>	<b>Tools</b> > <b>Shuttle Preferences...</b>

3. In the **Servers** tab (**Advanced** tab for Neo), click  at the bottom of the **Servers** list.



This dialog opens:

**4. Enter your **User Name** and **Password**.**

- When connecting to an Automation Engine server, enter the **User Name** and **Password** you use to log in to the Pilot (the password can be blank if your server is configured to accept this).

You will have the same access rights in Shuttle as you have in the Pilot (for example the right to set processing priorities or not).

**5. To connect to a server *not* broadcasting over the 'Bonjour' network (Automation Engine servers or non-Bonjour-enabled Nexus servers):**


- Select **Manual** in the **Browse Method** list
- Enter your server's name or IP address in **Server Address**
- Fill in the **Server Port** used by your server.

**Note:**

When connecting to an Automation Engine server, enter *the port you defined in Configure*).

**6. Click **Add**.**

This adds a connection to your server in the **Servers** list.

- To remove the connection to a server, select it in the **Servers** list and click .
- To check or edit a server's settings, double-click it in the **Servers** list.

**Note:**

If you are using the Shuttle plug-in with other DeskPack plug-ins, and you have set up a server connection with the **Server Connection Assistant**, you will see this connection in bold in the Shuttle plug-in's **Servers** list (after restarting Illustrator).

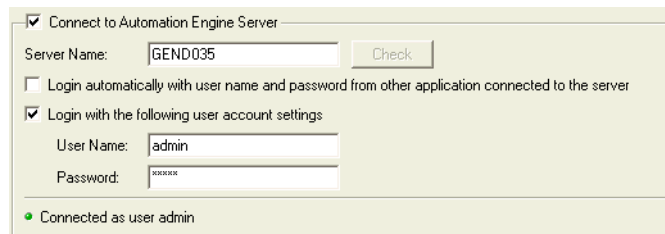
You will be able to change the user name and password if necessary, but you will not be able to remove this connection from the Shuttle plug-in.

Learn more about the Server Connection Assistant in the [Adobe Illustrator Client documentation](#).

### 3.4. Shuttle Clients Connecting only to Automation Engine

The Shuttle clients in PackEdge, Plato and FastImpose Server can only connect to one Automation Engine server.

1. Launch the application.
2. Open the **Preferences**.
  - In PackEdge or Plato, go to **Edit > Preferences** or use **Ctrl+Alt+Shift+P**.
  - In FastImpose Server, go to **Tools > Options...**
3. In the **Server&Resources** tab (the **Server** tab for FastImpose Server):
  - a) Select **Connect to Automation Engine Server**.
  - b) Enter the Automation Engine **Server Name** and click **Check**.  
 You should see a message saying the server is up and running.
  - c) Select '**Login with the following user account settings**', and fill in the **User Name** and **Password** you use to login to the Pilot.  
 If the connection is successful, you will see a green dot and the message '**Connected as user ...**'



**Tip:** If you are a Pilot on the same computer, or another Shuttle client (either PackEdge, Plato or FastImpose Server), you can select '**Login automatically with user name and password from other application connected to the server**'.

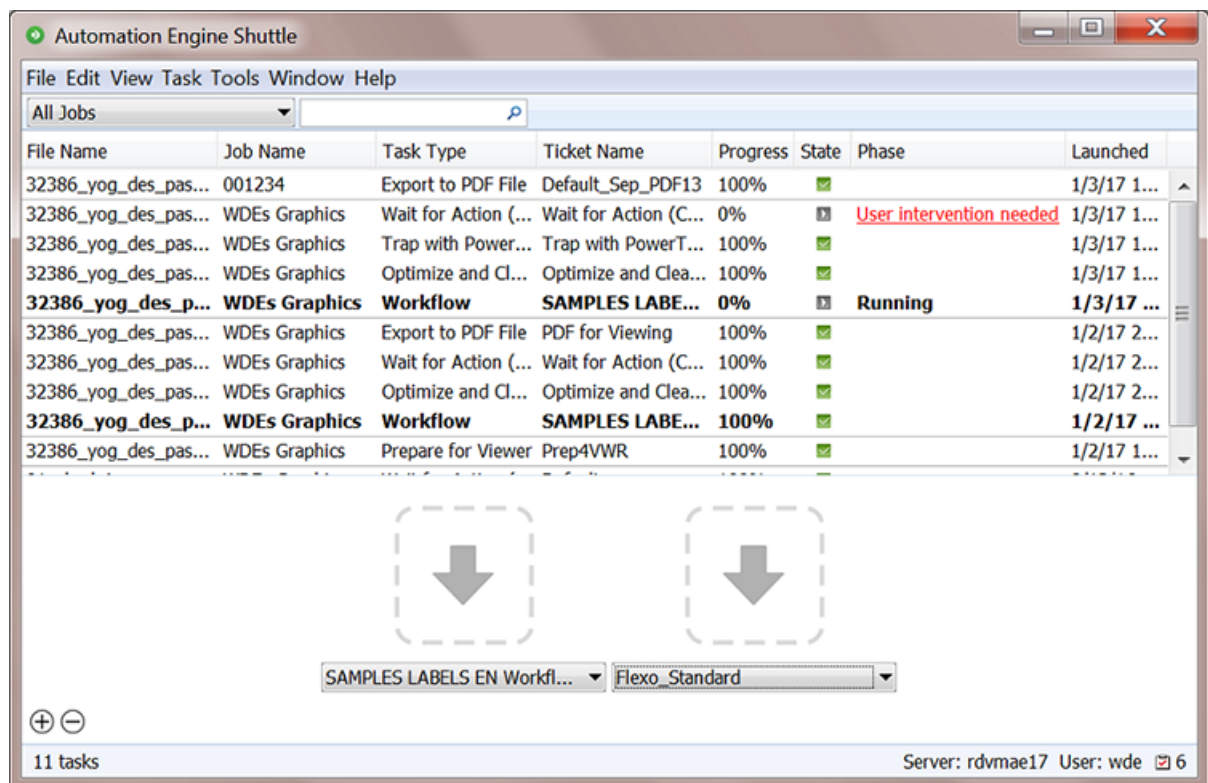
This way, if you are already logged in to the Pilot or the other client application, you won't need to log in when starting PackEdge / Plato / FastImpose Server.

4. Restart your application.



# 4. Launching the Automation Engine Shuttle

When you launch the Shuttle application, the window shows a list of launched **Tasks** and a **Launch Panel** where you can define one or multiple drop areas that each launch a specified workflow:



- To open a new window, go to **File > New Window**. You could use dedicated Shuttle windows for each of your Workflows.
- Use the **View** menu to hide or show parts of this window:
  - **View > Tasks** hides/shows the Task monitor.
  - **View > Launch Panel** hides/shows the Launch Panel.
  - **View > Status Bar** hides/shows the Status Bar indicating the progress.
- When closing, Shuttle saves the settings of the windows.

# 5. Working with the Automation Engine Shuttle

---

Starting the Shuttle will ask you to login to the Automation Engine Server.

**Note:** Whether this user can also start up a Pilot is decided by a specific **User Access Right**. Learn more in [Access Rights](#).

### Menu items

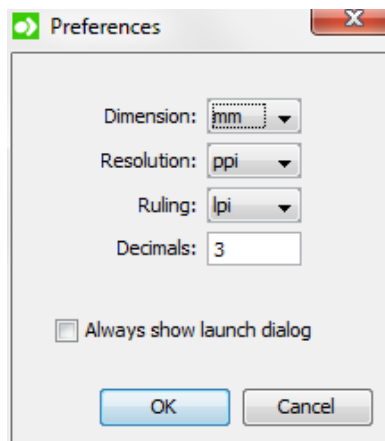
- **File:** To launch one or more files on the one defined workflow (after browsing for files), or to open and close Shuttle windows.
- **Edit:** To cut, copy or paste text in the search field. To select and delete tasks. Or to define [Preferences](#).
- **View:** To show or hide the Task Monitor, the Launch panel and the Status Bar.
- **Task:** To open or show the output file of the selected Task, to release or cancel the Task, or to add Annotations and show the task's Details.
- **Tools:** To open the **To Do List**.
- **Window:** To minimize, zoom or switch between Shuttle windows.
- **Help:** To see the **About** window or to access this online documentation.

### Setting the Preferences for Shuttle

On Mac, select **Preferences...** in the **Application** menu. On Windows, go to **Edit > Preferences...**

In the **Preferences** dialog, set the units for **Dimension**, **Resolution**, **Ruling** and the number of **Decimals** to use.

Select '**Always show launch dialog**' if you want to see the **Public Parameter** dialog when starting a new task, even if there aren't any public parameters. This allows you to change these parameters before launching the task.



## 5.1. The Task Monitor

The **Task Monitor** is the part that shows the Automation Engine tasks that were launched both from Shuttle and Pilot clients. One row represents or a single task or one step of a workflow.

You can filter the displayed list tasks:

- By filtering on a Job context from the Job selected from the drop-down list in the toolbar. Select **Other...** if you want to select a Job other than the recently used ones in the list. Select **All Jobs** to clear the current filter.
- By typing in a value in the filter. Learn more about creating filters in [Using Filters](#).

**Note:** In Shuttle, you cannot open or edit a task. This is only possible in a Pilot.

**Tip:** You cannot hide the columns displayed in the Task Monitor. However, you can change their order and width.

### Tasks asking for User Intervention

Workflows that including a [Wait for Action](#) task will show when they reached this step in the column **Phase**. This allows the Shuttle user to intervene and decide how the workflow continues.

File Name	Job Name	Task Type	Progress	Phase	State	Launched
OmNom.ai	mabm	Wait for...	0%	User intervention	▶	10/30/12 5:15...
OmNom.ai	mabm	Workflow	0%	Running	▶	10/30/12 5:15...
Screen Shot 20...		Wait for...	0%	User intervention	▶	10/30/12 5:14...
Screen Shot 20...		Workflow	0%	Running	▶	10/30/12 5:14...
arrow.png		Workflow	100%		✖	10/30/12 10:5...
arrow.png		Workflow	100%		✖	10/30/12 10:5...
Screen Shot 20...		Wait for...	0%	User intervention	▶	10/30/12 9:16...
Screen Shot 20...		Workflow	0%	Running	▶	10/30/12 9:16...

To intervene,

- Click on the **User intervention needed** link.
- In the resulting **To Do** window, choose to **Forward** or **Release**. Learn more in [User Intervention from the Shuttle](#) on page 14.

### Context menu options

Right-click on a task to access these options:

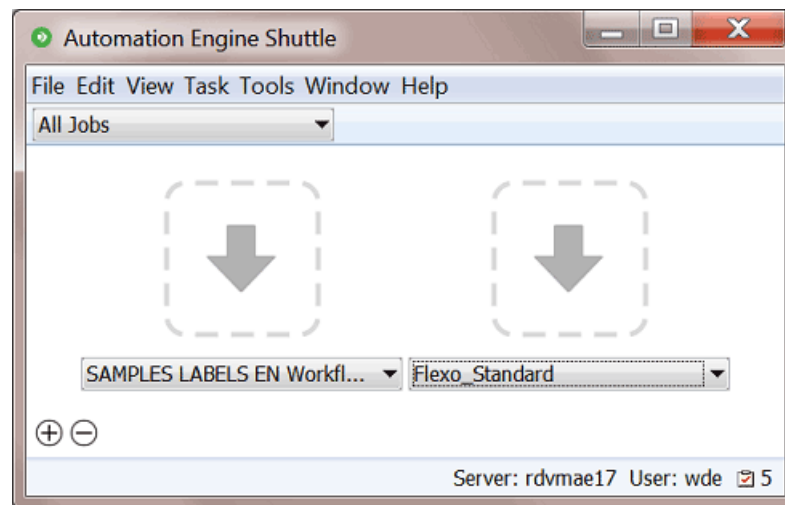
- **Open Output File:** To open the task's output file with the appropriate application (if possible).
- **Show Output File in Finder / Explorer:** To see the folder that contains the output file in (Mac) Finder or (Windows) Explorer.
- **Release:** To release a task that is on hold.
- **Cancel:** To cancel a running task.
- **Delete:** To delete a finished task. You will be asked to confirm.
- **Annotation...:** To add or modify an annotation.

- **Details:** To see a dialog with detailed information about the task (step).

**Tip:** These options are also available via the **Task** menu.

## 5.2. The Shuttle Launch Panel

The Launch Panel is where you drop one or multiple files as input files for that workflow. Each drop area launches a specific workflow and is indicated with a large arrow.



- Click **+** to add an extra drop area.

**Note:** To remove a drop area:

- Click **-**. This changes the user interface in editing mode.
- Click **✕** on the top left corner of the drop area that you want to delete.
- To leave the editing mode, click again on **-** or press **Escape**.

- Below each drop area, select the desired workflow from the drop-down list.



**Attention:** Only **Public** tickets are listed.

**Note:** The drop areas and their assigned workflow are saved when you close Shuttle.

## 5.3. Launching a Workflow from the Automation Engine Shuttle

1. If the Launch Panel is not visible in the Shuttle window, go to **View > Launch Panel**.

2. Submit one or more files in one of these ways:

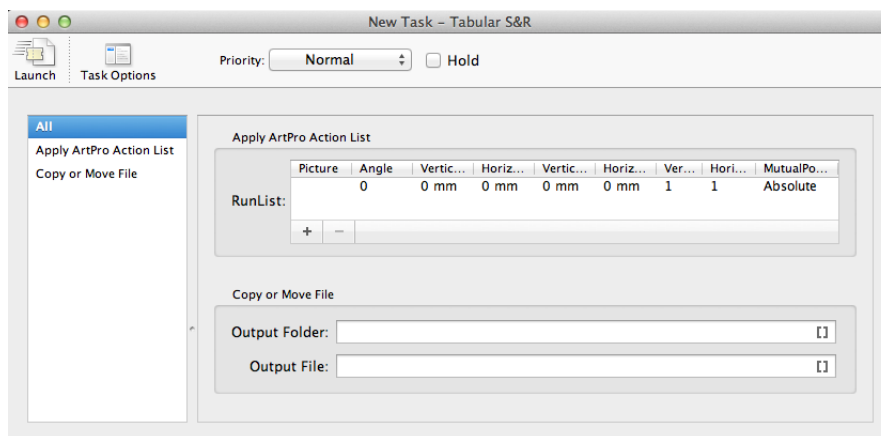
- Drag and drop the desired file(s) onto a drop area.
- Go to **File** > **Launch...** and select the files.
- Use the keyboard shortcut CMD-L (Mac) or Ctrl-L (Windows) and select the file(s).

**Note:**

- If a file was previously launched on the same workflow, a dialog will open and ask if you want to reuse the public parameter values from the previous launch. If you choose to reuse these values, they will be used as default parameter values. You can still edit these values if necessary.
- The selected file(s) will be uploaded to the root folder of the selected Job. When no Job is selected, it will be copied to the **Upload Folder** defined in the [Configure panel](#).
- If a file with the same name is already present in the upload folder, a dialog will warn you about overwriting the file. You can then choose to either **Replace** the existing file, or **Cancel** the launch.

3. If the workflow has Public Parameters, the **New Task** dialog will ask you to fill them in. Learn more in [Using Public Parameters in Workflows](#).

An example:



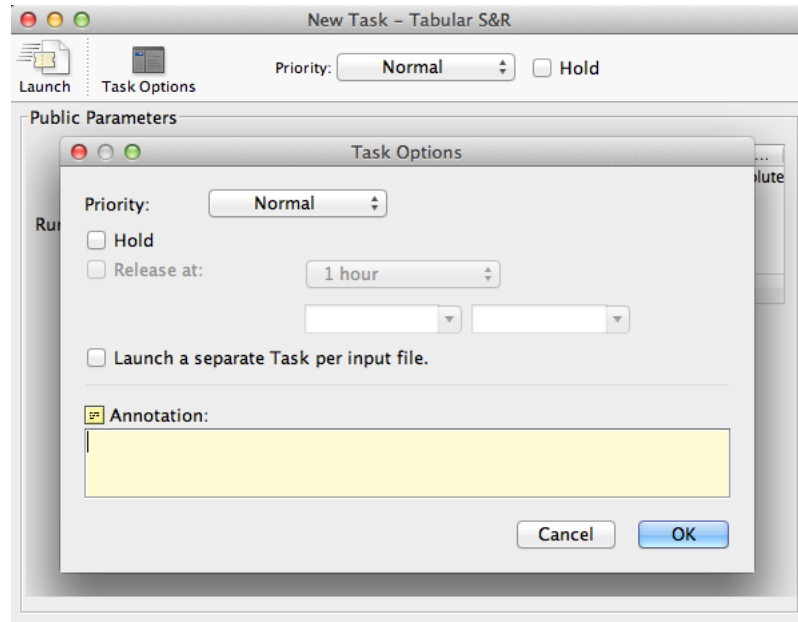
a) Click **Task Options** to define general task options. You can:

- Set the **Priority** of the task (**Low**, **Normal**, **High** or **Immediate**).
- Select **Hold** to keep the task from being launched until someone releases it (via a right-click or via the **Task** menu).

Alternatively, use '**Release at**' to hold the task until a specific time, after which it will automatically be released.

**Note:** You can later change this automatic release setting by selecting **Release** via the right-click menu in the Task Monitor or via the **Task** menu.

- Select '**Launch a separate Task per input file**' to launch a separate task or workflow for each input file.
- You can also set an **Annotation** for the task.

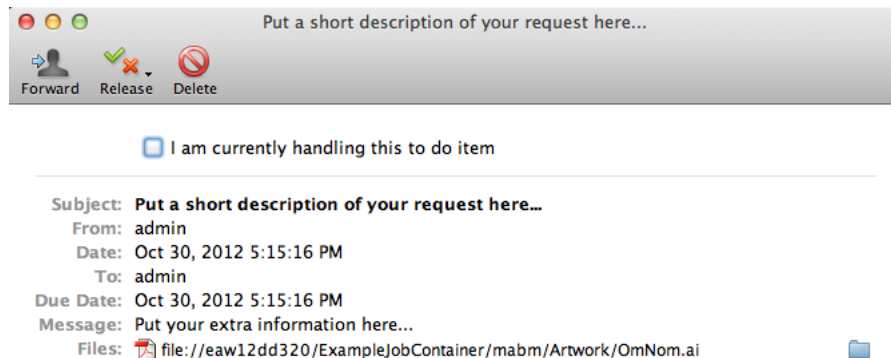


4. Click **Launch** to launch the workflow.  
The task will immediately appear in the Task Monitor.

## 5.4. User Intervention from the Shuttle

When the launched workflow contains a *Wait for Action (Checkpoint)* step, a **User intervention needed** link appears in the Task monitor when that step is reached..

1. Click on the **User intervention needed** link to open the **To Do** dialog.



2. Optionally, select '**I am currently handling this to do item**' to mark that you are handling this item (other users are so also informed).
3. Decide how you want to **Release** this item. The offered choices are those that were decided in the ticket of the 'Wait for Action (checkpoint)' task.  
Select the wanted output state. The **To Do** window will close and the workflow will continue processing.
4. In stead of releasing the item, you could **Forward** or **Delete** it.
  - Click **Forward**, choose the user and set other details. The other user then needs to decide how and when the workflow continues.
  - Click **Delete** to delete this item and also end the processing of the workflow.