

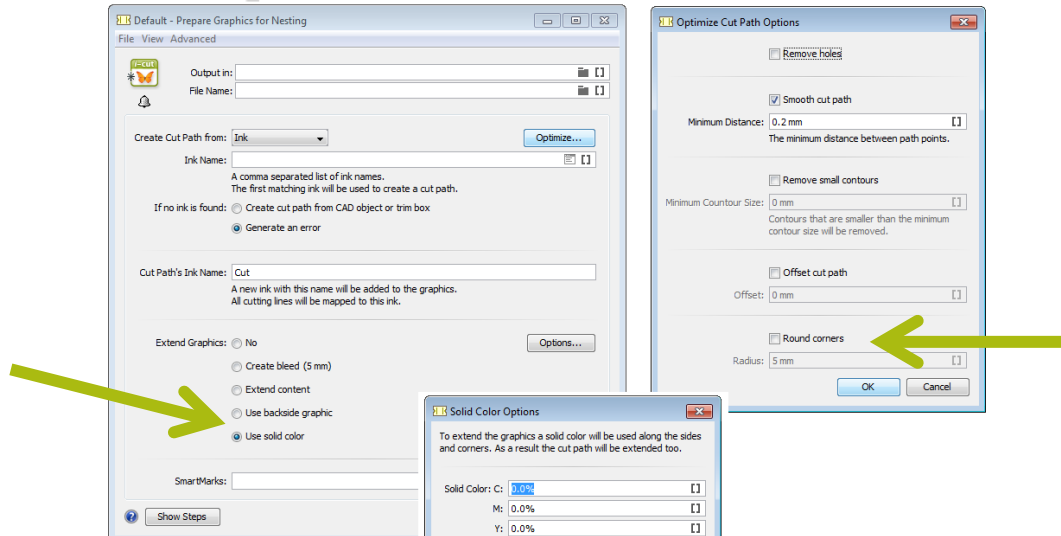
# What's New in Automation Engine 16.1 ?

Release of November 2017 and January 2018

29/01/2018

# Gang Run Printing improvements

- The “Prepare Graphics for Nesting” task now allows to:
  - optimize a cut path by rounding corners
  - extend graphics based on the backside graphics or by using a solid color



## Gang Run Printing improvements (2)

- The Gang Run Printing view can now display the nesting layout proposals (pause queue, preview the nested result(s), choose and print).

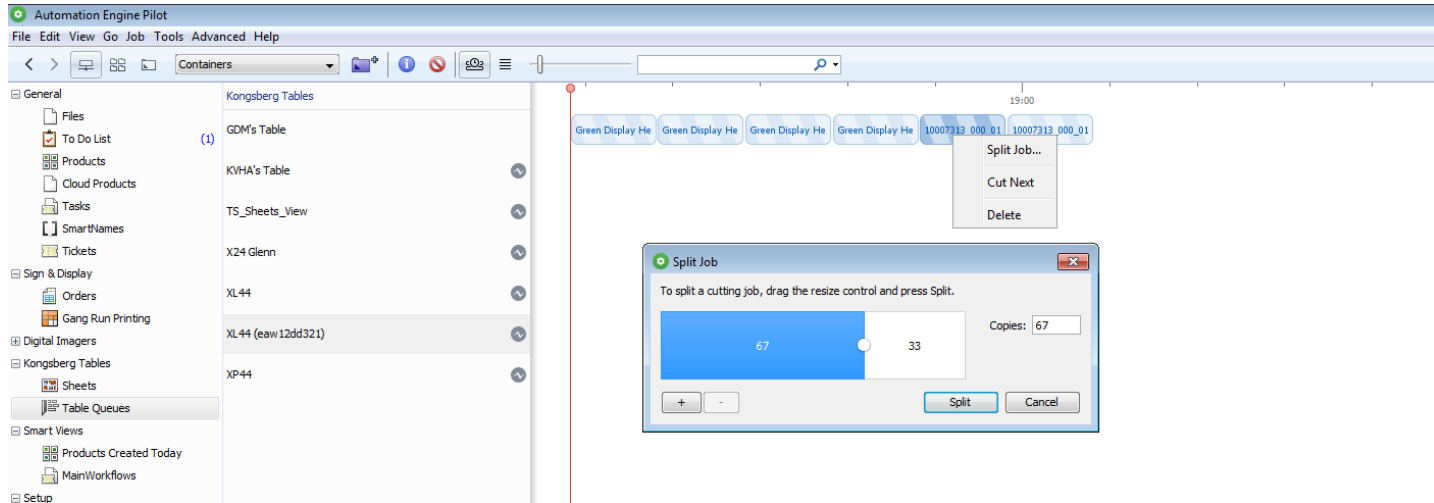
The screenshot displays the Automation Engine Pilot software interface. The main window is titled "Automation Engine Pilot" and has a menu bar with "File", "Edit", "View", "Go Job", "Tools", "Advanced", and "Help". Below the menu bar is a toolbar with navigation and control icons. The left sidebar contains a tree view with categories like "General", "Sign & Display", "Digital Imagers", "Kongsberg Tables", and "Smart Views". The "Gang Run Printing" option is selected and highlighted.

The main workspace is titled "Substrate Queues" and shows two nesting layout proposals for "Eskolami" substrate. The first proposal shows four car images (black SUV, red truck, silver sports car, red sports car) with a bounding box of 1500x1200, 1 copy, 4 one-ups, 4 placed items, and 40.672% waste. The second proposal shows two car images (black truck, silver sports car) with a bounding box of 1500x1200, 1 copy, 2 one-ups, 2 placed items, and 72.866% waste. A blue border highlights the second proposal.

On the right side, a panel shows details for the selected proposal: "6 of 6 one-ups", "Pause Substrate Queue" button, "Size: 1500x1200", "Copies: 1", "Waste: 72.866%", "Grouping: --", "Contains: 2 one-ups", and "One-Ups: AmericanCars\_3.pdf (1), AmericanCars\_5.pdf (1)". A green arrow points to the "Pause Substrate Queue" button.

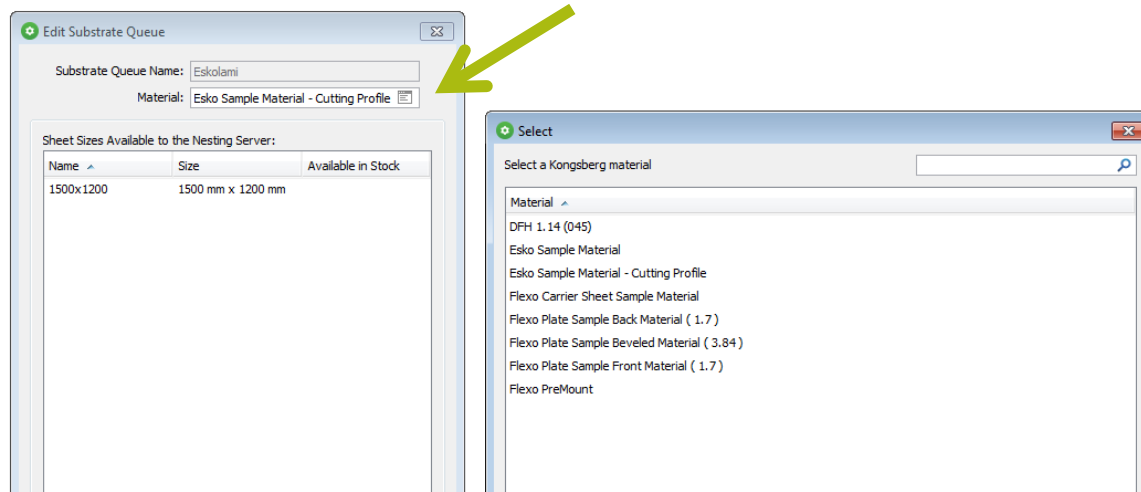
# Improved integration with Kongsberg tables

- A Kongsberg cutting job can now be split and moved to another table queue.



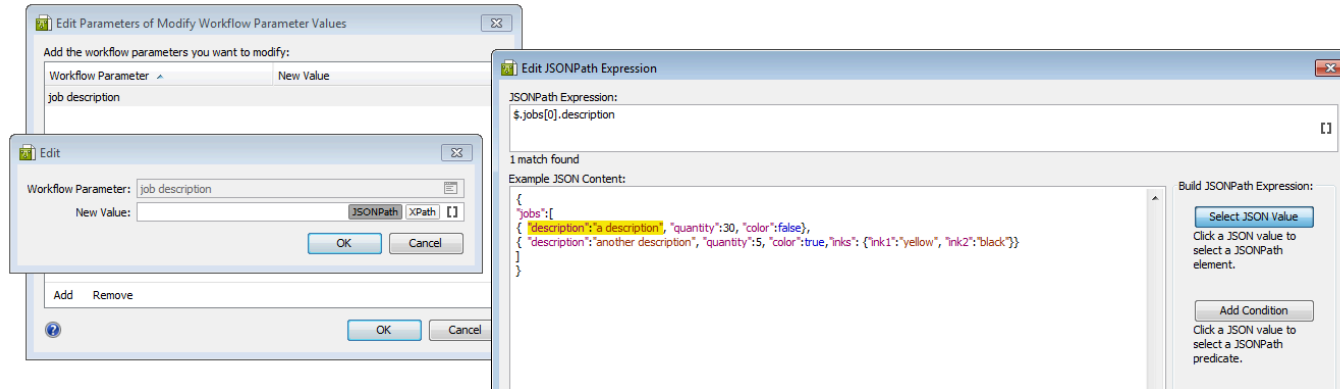
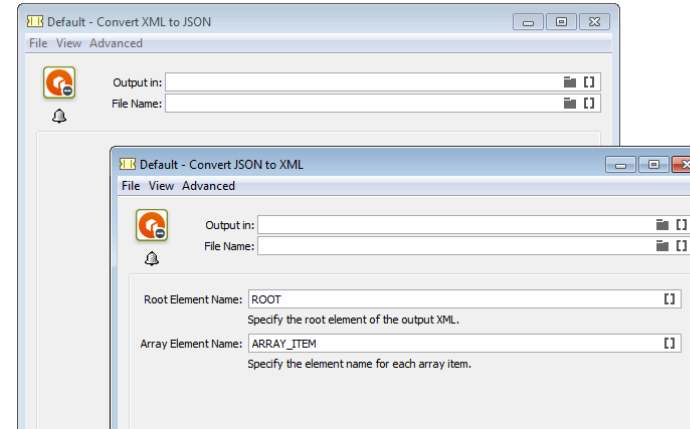
## Improved integration with Kongsberg tables (2)

- A Gang Run Printing Substrate Queue can now be linked to a material in i-PC.



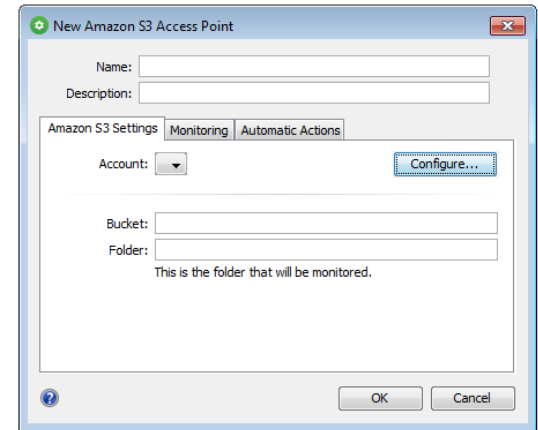
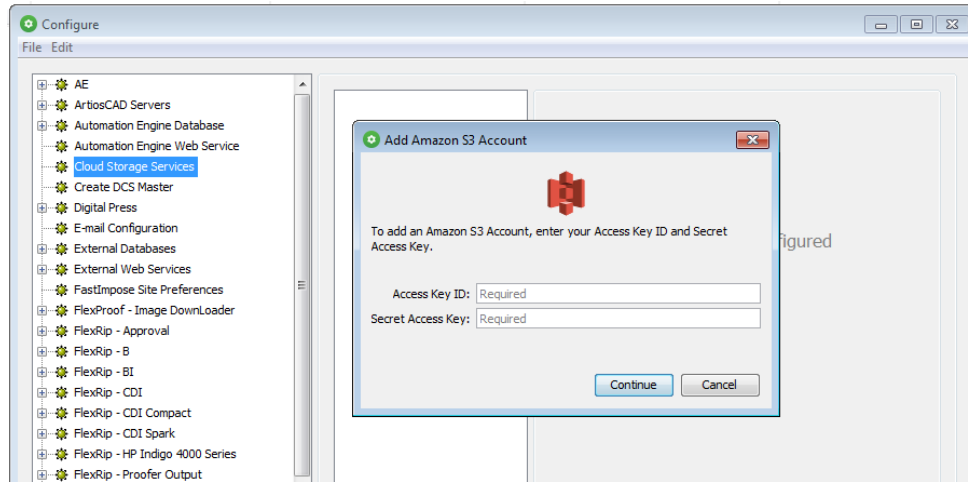
# JSON support

- 2 new tasks: “Convert JSON to XML” and “Convert XML to JSON”
  - This avoids the external web service from having to do the conversion to/from XML
- Some workflow controls now also allow adding inline JSONPath
  - including a JSONPath expression builder, much like the XPath one



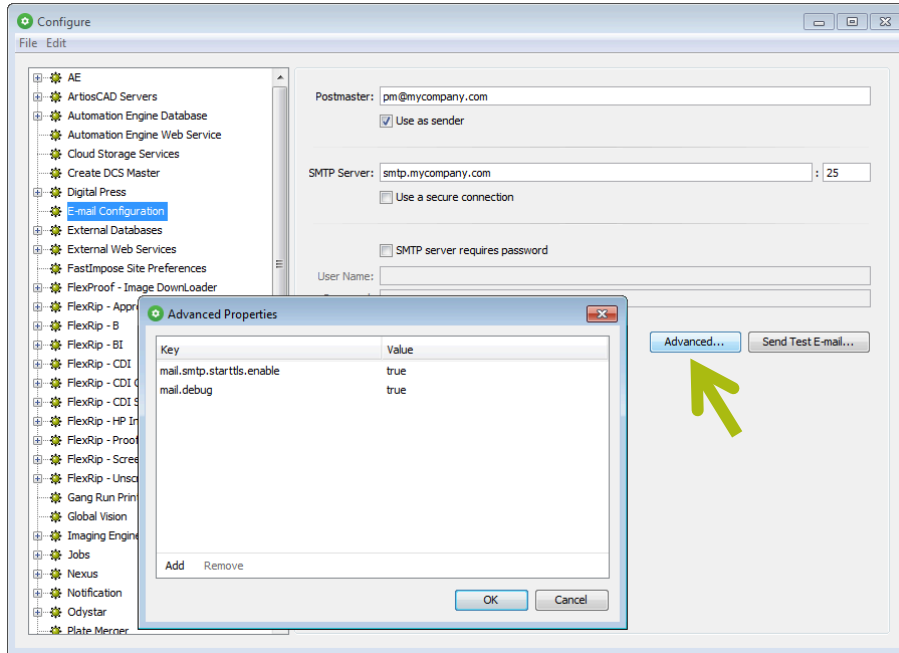
# Support for Amazon S3

- New type of Access Point allow accessing the cloud storage of Amazon S3.
- The 'Upload to Cloud Storage' task now also allows sending to Amazon S3.



# Outgoing E-mail:Support for Office365

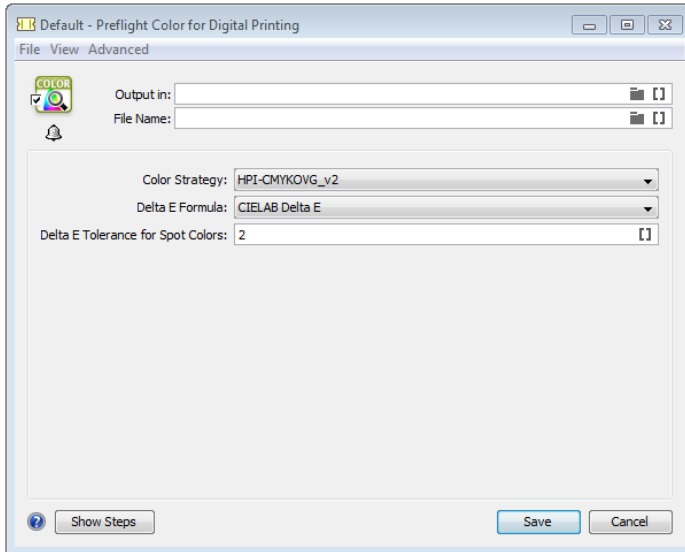
- Advanced E-mail configuration parameters enable support for Office365 for outgoing mail.





## New Color task related to Digital Printing

- “Preflight Color for Digital Printing” verifies if a job is suited to print on a certain press and with a certain ink set (HP Indigo only).



## Seeing a Ticket's Modification Date

- See, sort and filter by its modification date

Tickets			
Task Type	Ticket Name	Modification Date	Modified By
Export IMP File to PD...	PDF Sheet_naar drukker	10/3/17 12:26 PM	beou@rdvmae19
Workflow	dup Default-2017071114...	10/3/17 8:53 AM	beou@rdvmae19
Workflow	test	10/3/17 8:53 AM	beou@rdvmae19
Normalize PostScript ...	150dpi_iso_v2_300_not ...	10/3/17 7:41 AM	beou@rdvmae19
Normalize PostScript ...	150dpi_iso_v2_300_use ...	10/3/17 7:26 AM	beou@rdvmae19
Export to PDF File	Default - Neal at 36ppi	10/2/17 12:07 PM	beou@rdvmae19

## And Also:

- PitStop 2017 is now embedded in AE (enabling new functionality, for example 'restrictions',...).
- Basic support for PDF+ files in Automation Engine (FileInfo, Router).
- Extensions in the Import JDF Layout allow for an integration with Tilia Labs S&R through JDF.
- Support for MacOS High Sierra as client OS.
- Support for SQL Server 2016 as external database server.
- An external web service can now query for info about connected CDI devices.
- The 'Interact with Web Service' task now supports chunked encoding.
- Web Service Access Points now support HTTPS and authentication.
- The 'Cloud Storage' services now re-establish a connection in an easy way.
- The 'Script SmartName' editor now shows line numbers.
- Reducing the amount of tasks in the CPU queues can now be done via Server Admin.
- ...

**ESKO\***