

# ArtPro+ 24.03

What's New

Frank Woltering

Technical Product Manager Graphic Editing

# Step & Repeat

# Multiple 1-Ups in a Single Grid



- New “Static Grids” facilitate multiple artworks in one arrangement. Dynamic Marks are still updated accordingly.

Convert a grid to static to access individual station

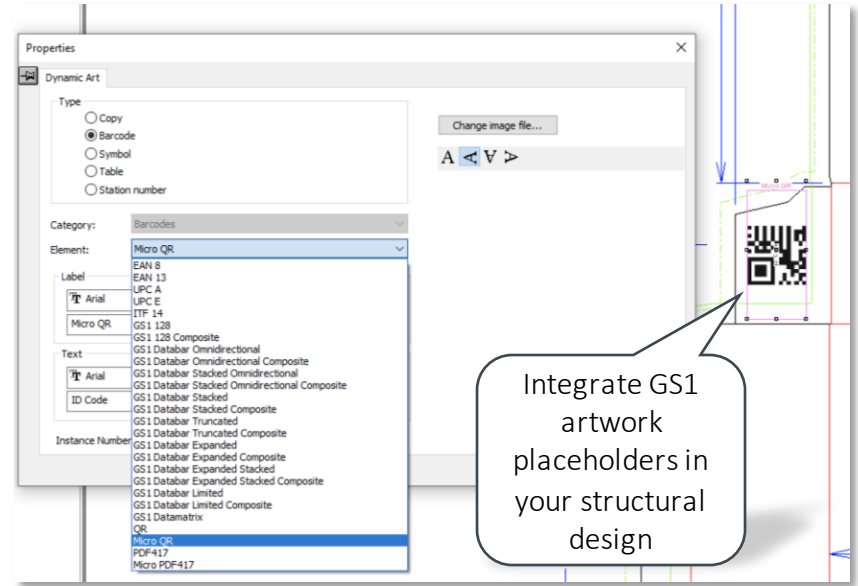
Use the Object Select Tool (A) or Object Browser to target stations

Replace the graphical file for selected stations

Control bleed settings in the “Static Grid Inspector”

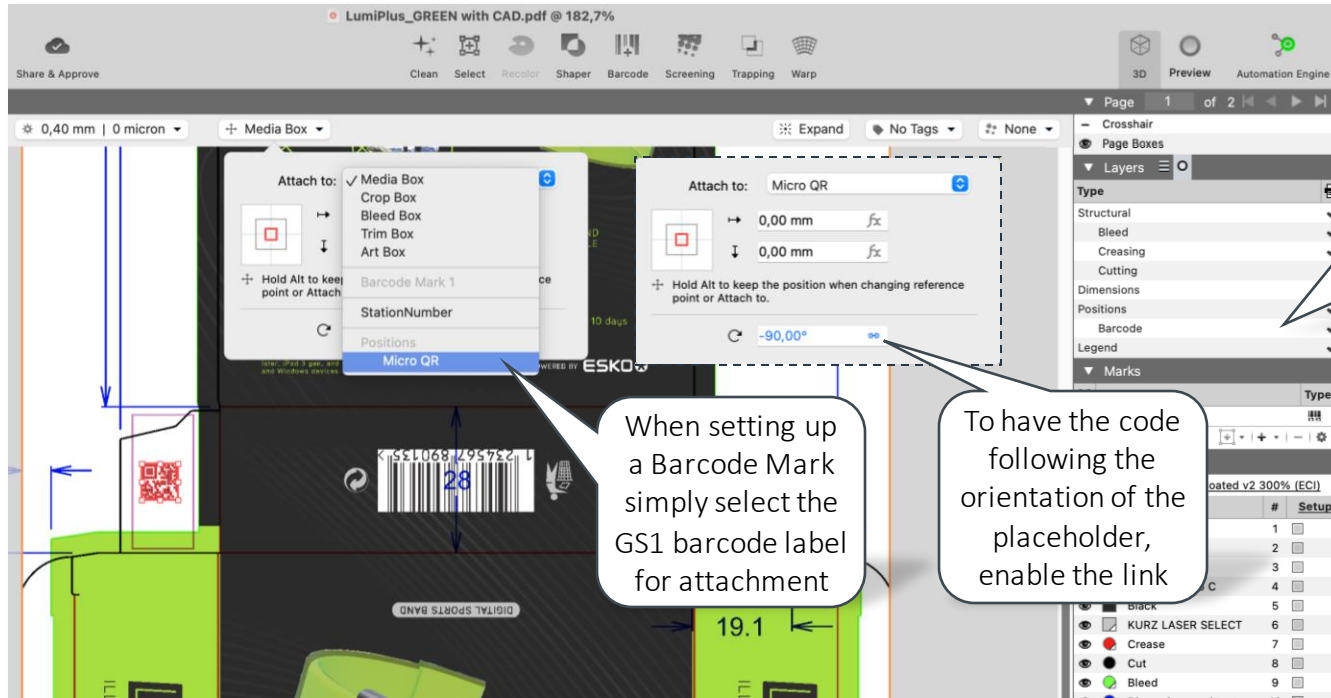
# Import Barcode Placeholders from ARD

- ArtiosCAD offers the definition of “Dynamic Art Placeholders” that allow the structural design to propose the target position and orientation for printed packaging content following the GS1 EDI standard (<https://www.gs1.org/standards/edi/gs1-xml>)



- With ArtPro+ you can now utilise Dynamic Art Placeholders to position Barcode Marks

# Import Barcode Placeholders from ARD



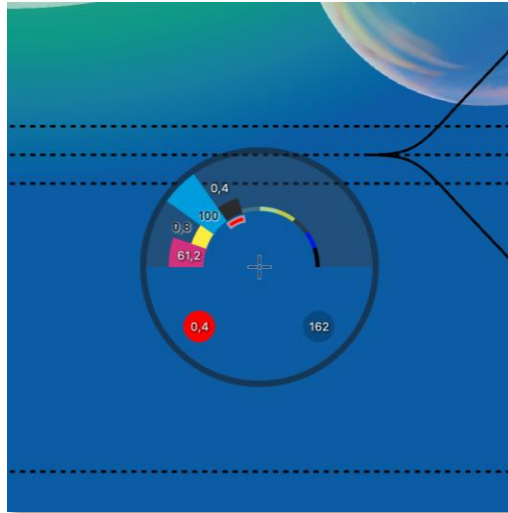
Placeholders are automatically represented as ISO Processing Steps - Positions – Barcode to not harm your artwork

# Quality Assurance

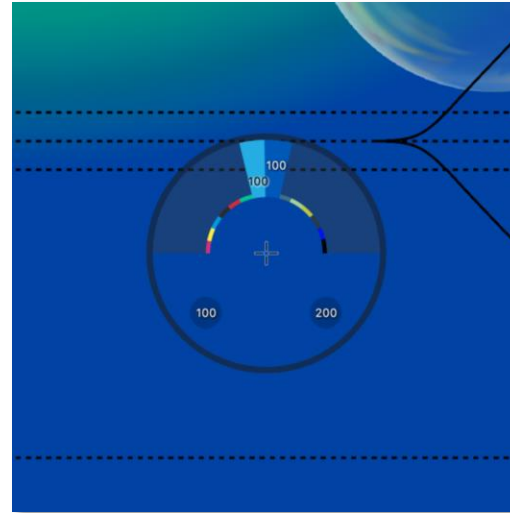
No more unintentional changes

# Compare: Show Densities of Reference Document

- Holding down “C” when using the Densities Tool during Compare will show a readout of the reference document’s color values in the wheel



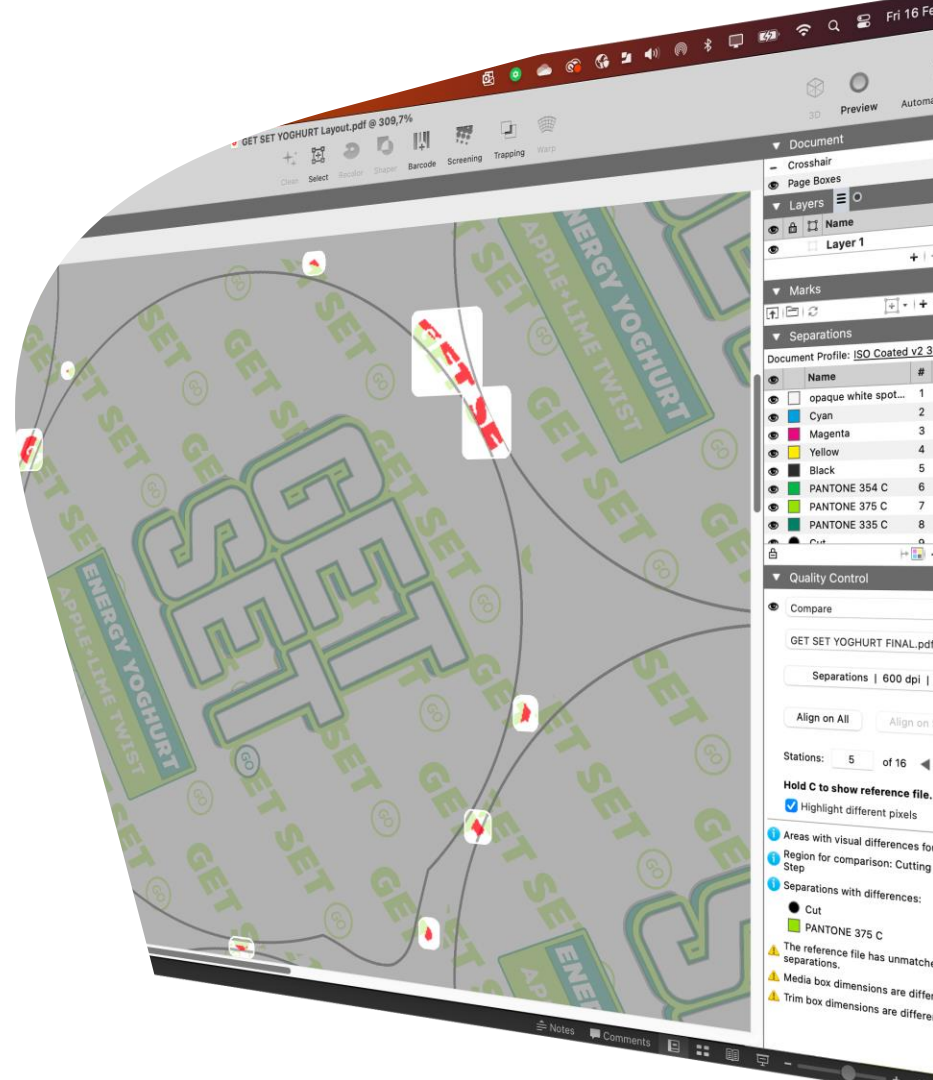
Document



Reference Document

# Compare Layout with Artwork (1 of 2)

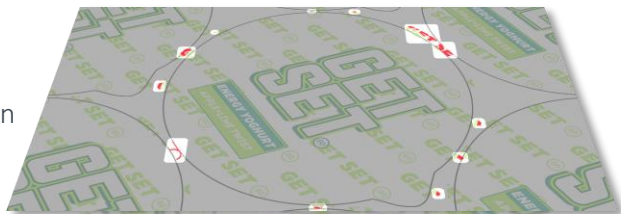
- Not only complex layouts can introduce unwanted changes in the graphics. Special PDF blend modes, stations overlapping or artwork objects in the layout file may compromise the approved single artwork
- Use the Compare tool to ensure the layout has no hidden problems





# Compare Layout with Artwork (2 of 2)

Differences in  
Station



Auto-Alignment



Hold down “C” to  
toggle between  
layout and  
reference file

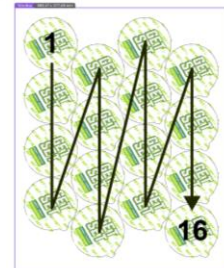
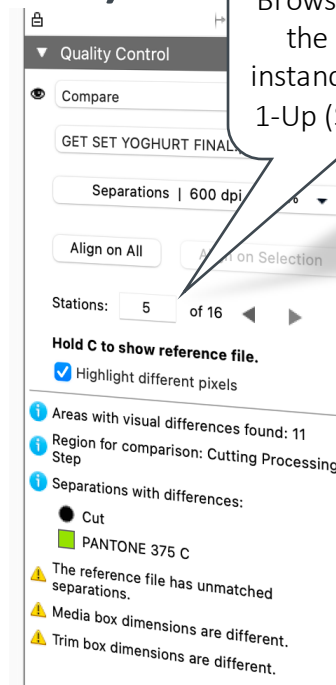
Auto-Rotation  
& Auto-Bleed



Reference File  
(single artwork)



Browse through  
the applied  
instances of your  
1-Up (Stations\*)

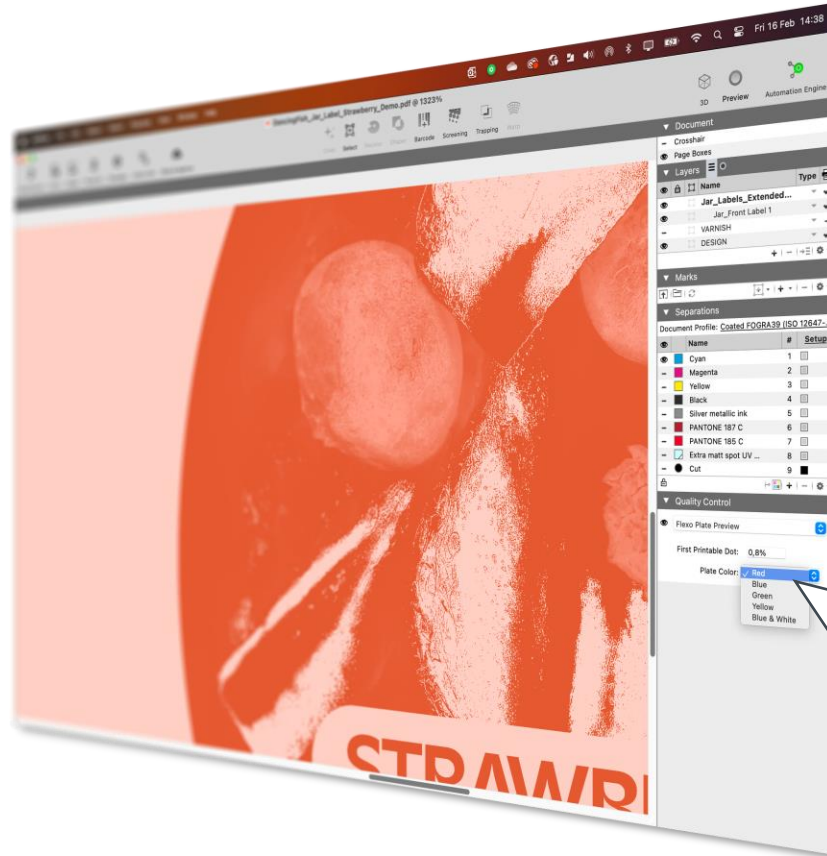


## Note:

Use “Align on Selection” if your layout contains similar but different artworks or is not MFG, CFF2, grid or static grid-based.

# Flexo Plate Preview

- Get a simulation of the Flexo plate to find areas that need attention

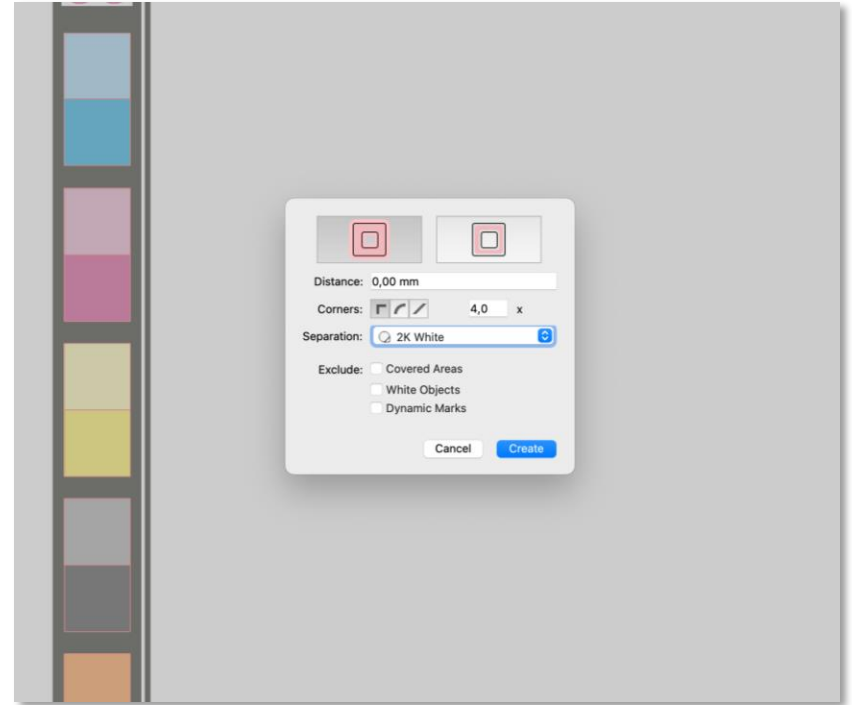


Choose your preferred min-dot and plate setting

# White Underprint & Embellishments

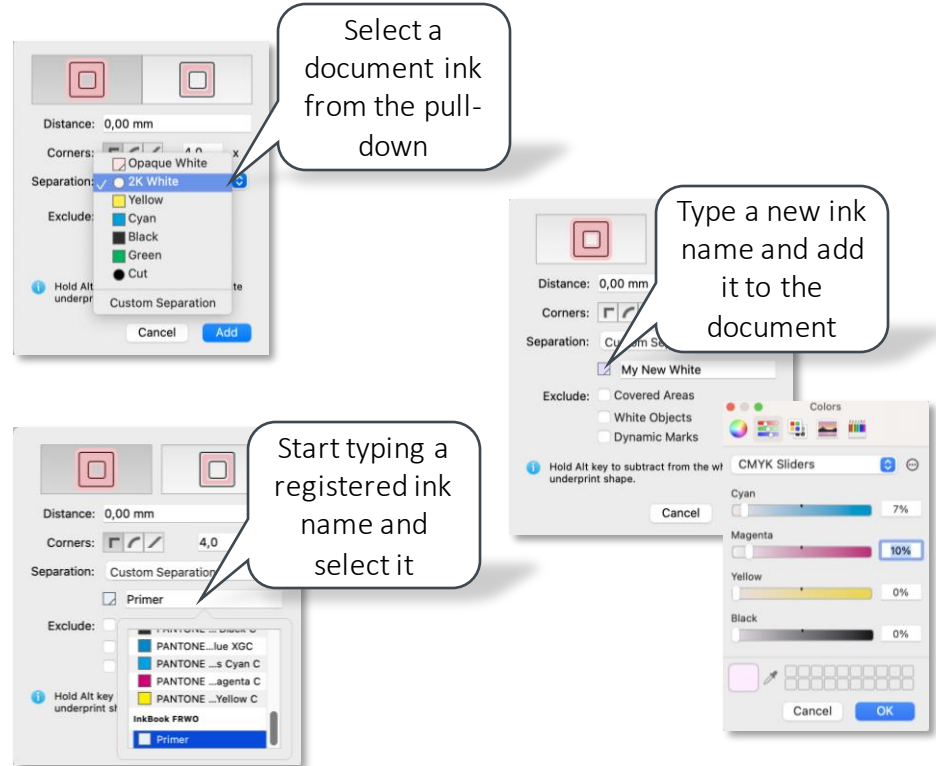
# White Underprint for Dynamic Marks

- The White Underprint Tool can now add White Underprint to Dynamic Marks



# Use any Separation for White Underprint

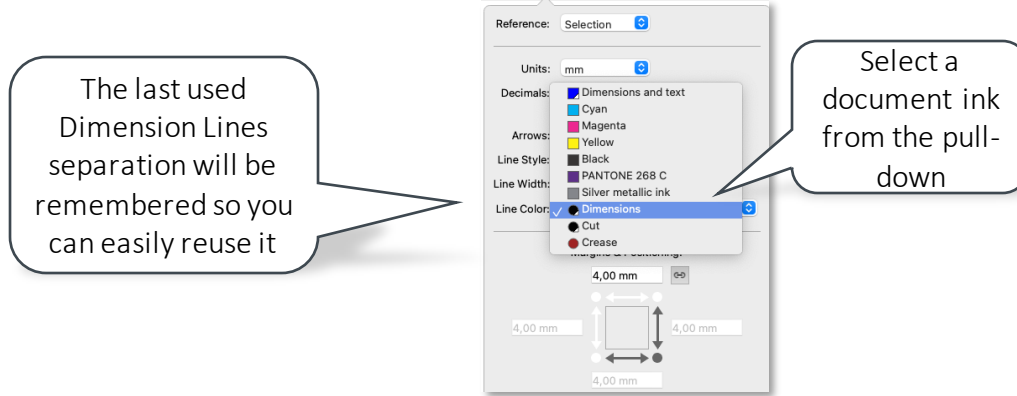
- The separation used for white underprint objects is no longer restricted to Opaque White, you can now choose any
  - Document ink
  - Registered ink
  - Custom (new) ink
- The last used White Underprint separation will be remembered so you can easily reuse it



# Dimension Lines

# Custom Separation for Dimension Lines

- The separation used for Dimension Lines and Dimension Line Marks is no longer restricted to “Dimensions And Text”. You can choose any document ink for dimension lines.



In-line with the interactive Dimension Lines Tool, the Dimension Lines Mark allows for using available separation

# Remove Trailing Zeros in Dimensions

- Remove unnecessary zeros in dimensions for concise reporting

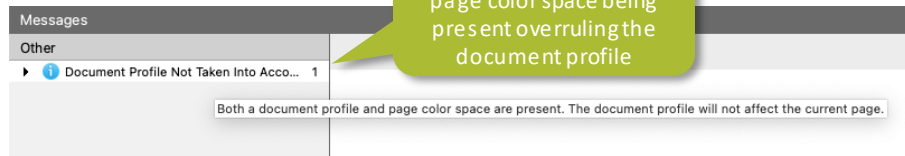


In line with the interactive Dimension Lines Tool, the Dimension Lines Mark allows for removing unnecessary zeros

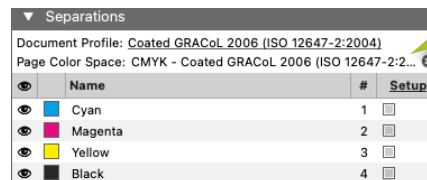


# Color Management

# Improved UX for ICC Based Color Management

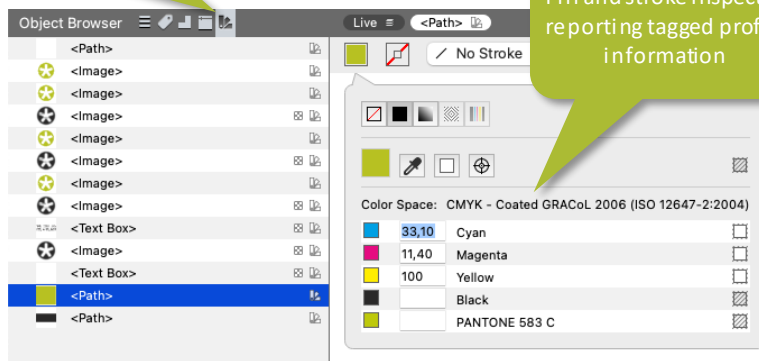


1 Clear message in case of page color space being present overruling the document profile

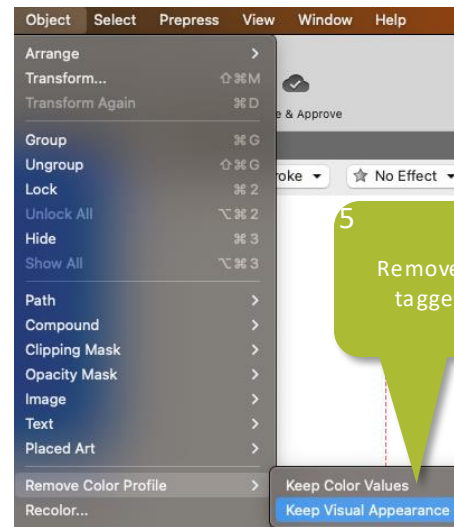


2 Possibility to remove page color space tag

3 New category in Object Browser filtering on objects with color profile tags introducing color conversion



4 Fill and stroke inspector reporting tagged profile information

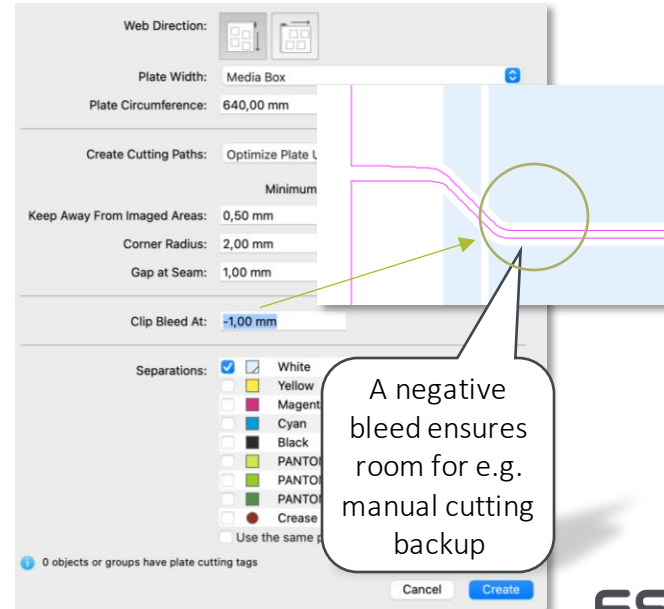
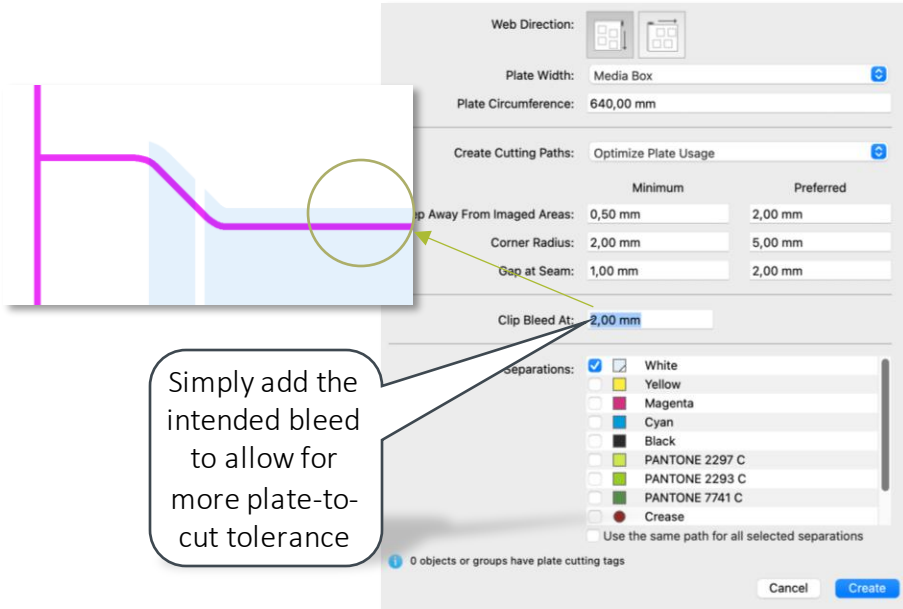


5 Remove or resolve tagged profiles

# Plate Cutting

# Plate Cut Bleed

- To allow for additional tolerance when cutting plates, you can add a positive or negative bleed to the imaged area



# Trapping

# Aesthetic Pullbacks

- When creating pullbacks, the Trapper now evaluates the context of graphics to decide on the set of colors to keep

**Previous** behavior:  
Individual color  
decisions per object  
can result in strong  
hue variations



**New** behavior:  
More aesthetical  
result by including the  
neighborhood



# Editing

# Smoothen Path

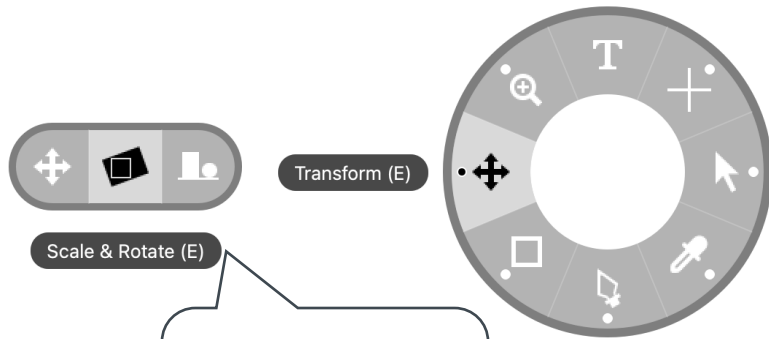
- Smoothen Path allows to simplify very vector heavy designs for better editability and processing



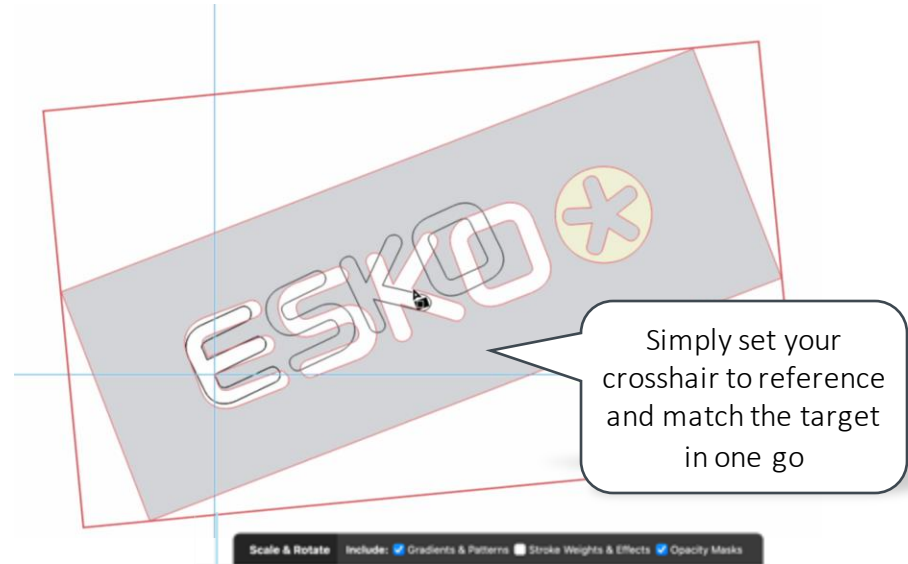


# Scale and Rotate Tool

- For fast and easy replacement of graphics, the Scale and Rotate Tool allows to grab the selection anywhere inside the borders and match the position and dimension of the target graphics

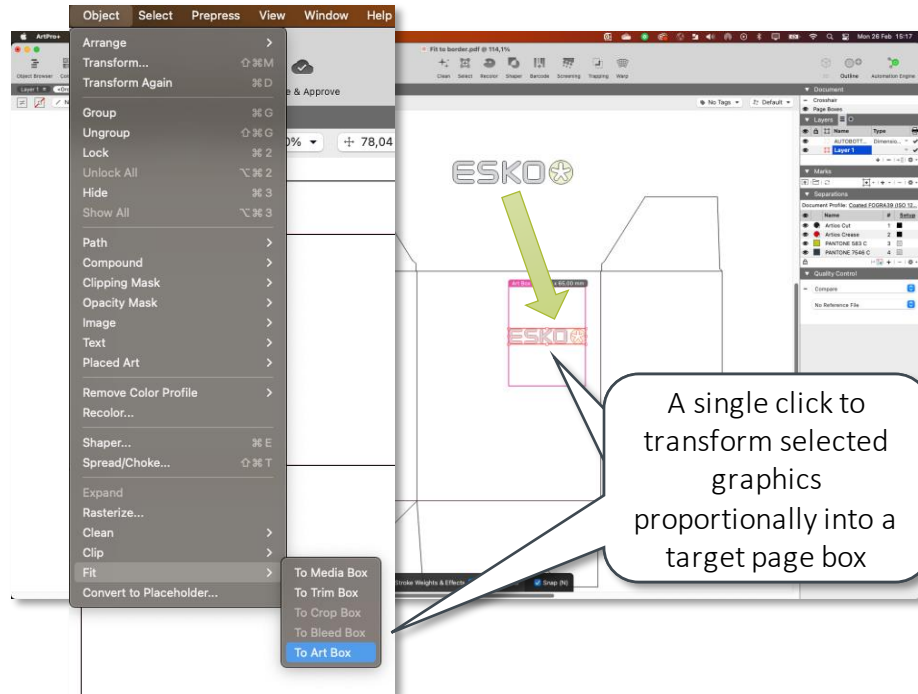


Find the new Scale and Rotate tool in the Tool wheel or toggle using the E-key



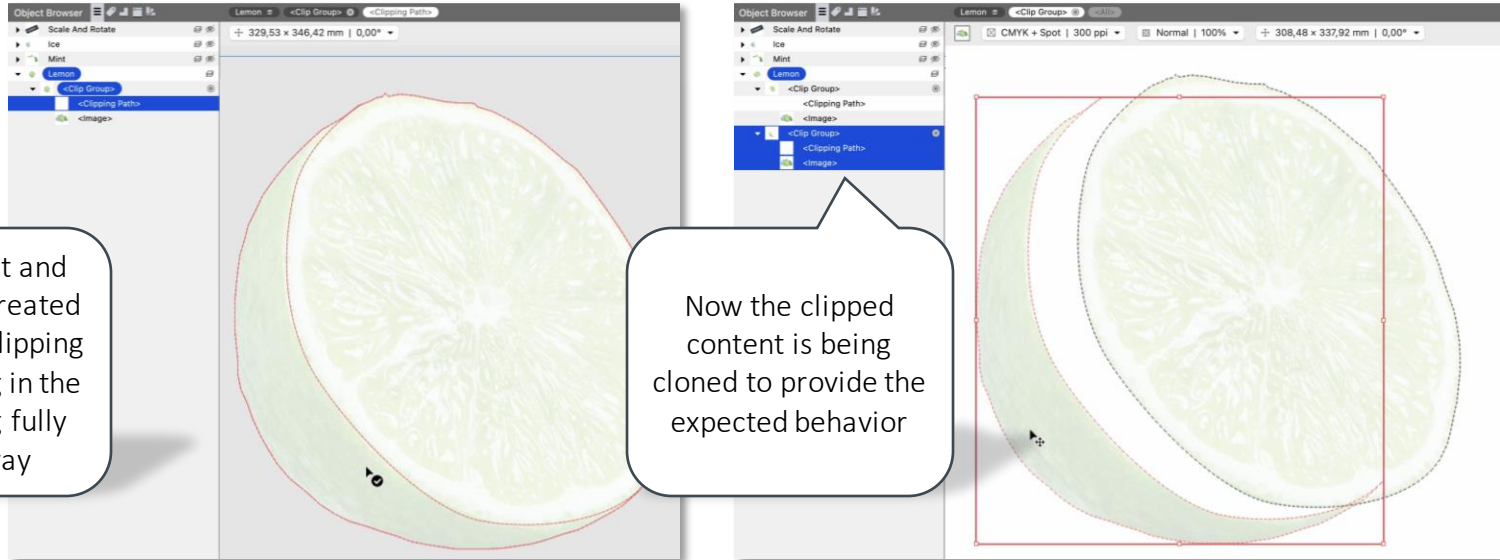
# Fit to Page Box

- For getting selected artwork quickly and accurately into a certain area of the packaging you can now use the “Fit to Page Box” feature



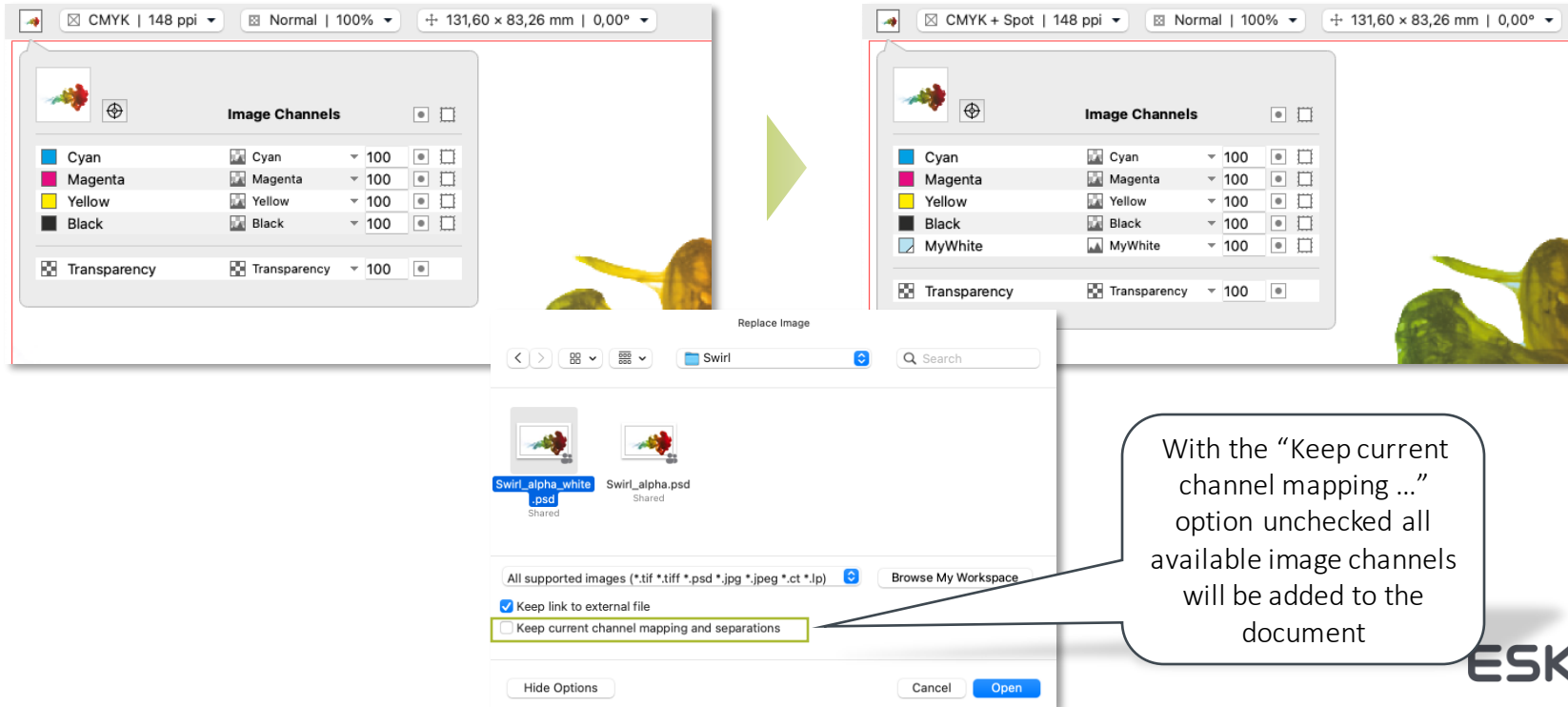
# Split Path for Clipped Content Improvement

- You can split clipping paths with convenience.  
The Split and Retrace Tool now duplicates the clipped content.



# Replace Linked Image Improvement

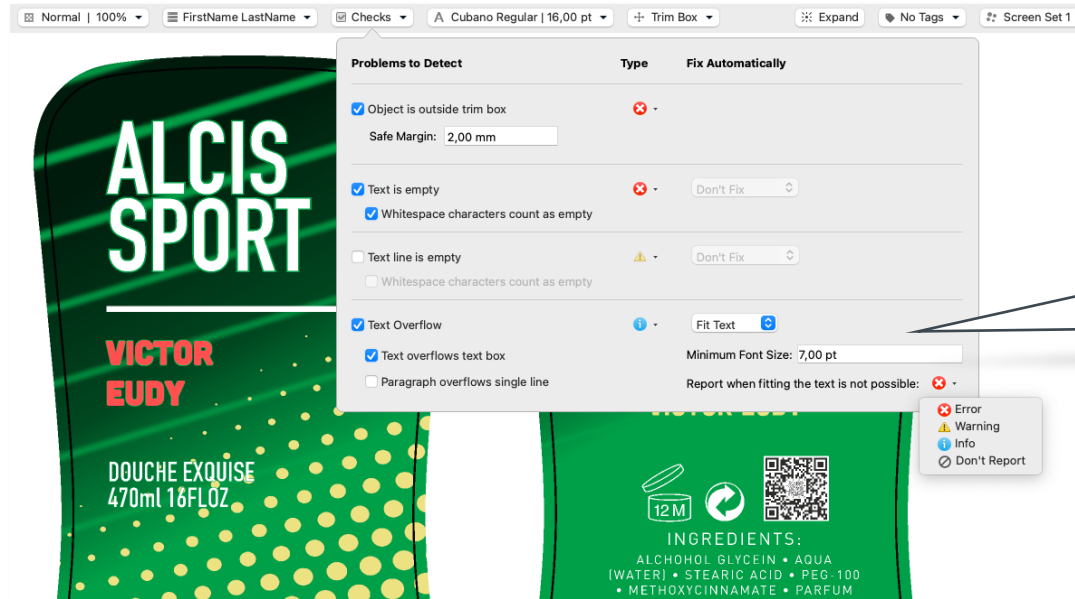
- You can now choose to reset channel mapping when replacing an image



# VDP

# Text Overflow Check

- The check for Variable Data text objects offers an automatic fix to handle text overflows



# PDF Action Lists

# More Automation (1 of 2)

## ■ New Actions

- Select Artwork Separations
- Select Separations by Printing Method
- Select Separations by Processing Step
- Remove Separations from Object
- Remove Color Profile
- Fit to Page Box
- Replace Embedded Placed Art (Legacy)

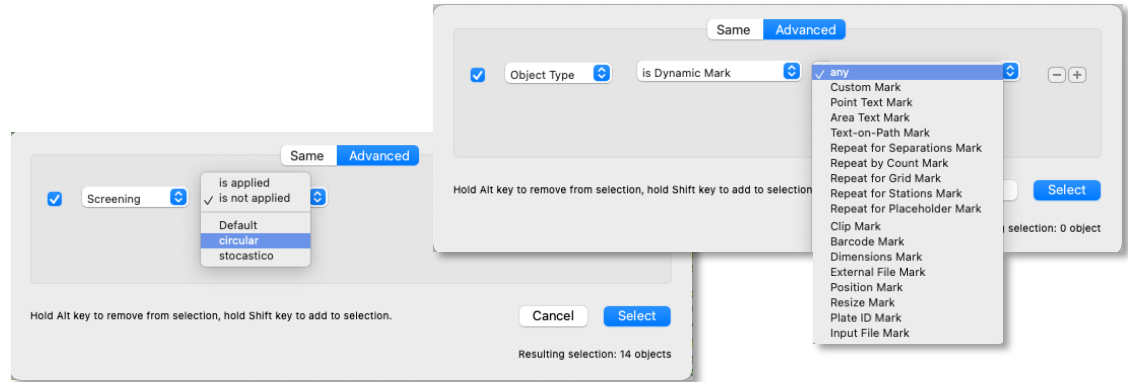
The screenshot displays the Adobe Acrobat Actions panel with the following actions:

- Select Artwork Separations**: Includes a "New Selection" dropdown.
- Select Separation by Printing Method**: Includes a "Printing Method" dropdown (set to "Offset"), a checked "Ignore Case" checkbox, and a "New Selection" dropdown.
- Select Separations by Processing Step**: Includes a "Processing Step" dropdown (set to "Any"), an unchecked "Include Artwork Separations" checkbox, and a "New Selection" dropdown.
- Remove Separations from Object**: A note states "This action has no parameters."
- Remove Color Profile**: Includes radio buttons for "Keep color values" (selected) and "Keep visual appearance".
- Fit to Page Box**: Includes a "Fit to" dropdown (set to "Trim Box"), an "Include" section with checked options for "Gradients & Patterns", "Stroke Weights & Effects", and "Opacity Masks".
- Replace Embedded Placed Art (Legacy)**: Includes an "Input Folder" field, "Prefix" and "Suffix" dropdowns, a "Browse..." button, and a "Report Missing Placed Art As:" field with a warning icon.



# More Automation (2 of 2)

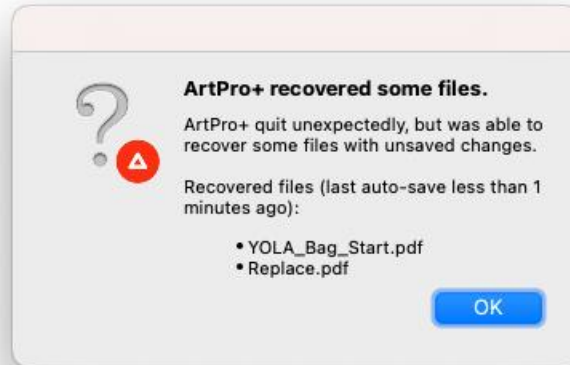
- Add or Subtract White Underprint
  - You now have more control over which separation to use and you can choose to include Dynamic Marks for White Underprint creation
- Select object by attribute
  - Select by Mark type
  - Select by Screening



# Miscellaneous

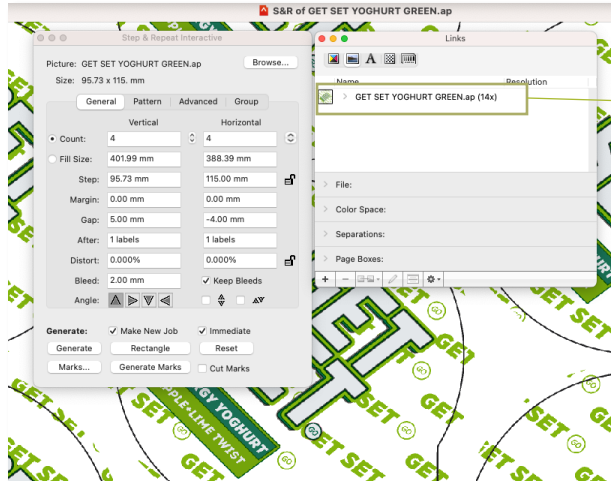
# Emergency Save

- Don't lose all your work any more!
- ArtPro+ makes frequent backups of your open document(s). In case of an emergency, you can continue working with the recovered files



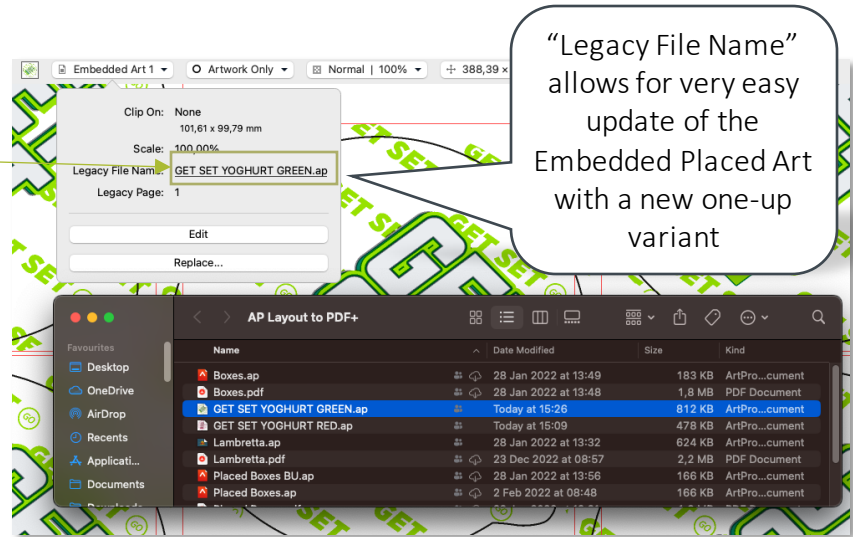
# Replace One-Ups from classic ArtPro S&R

- If you open a classic ArtPro Step and Repeat file and convert it to PDF+, the Embedded Placed Art inspector will show the Legacy File Name of the original one-up



External references in classic ArtPro

Open &  
convert to  
PDF+  
In ArtPro+



ESKO\*