

ArtPro+ 23.11

What's New

Frank Woltering

Product Manager Graphic Editing

Compare

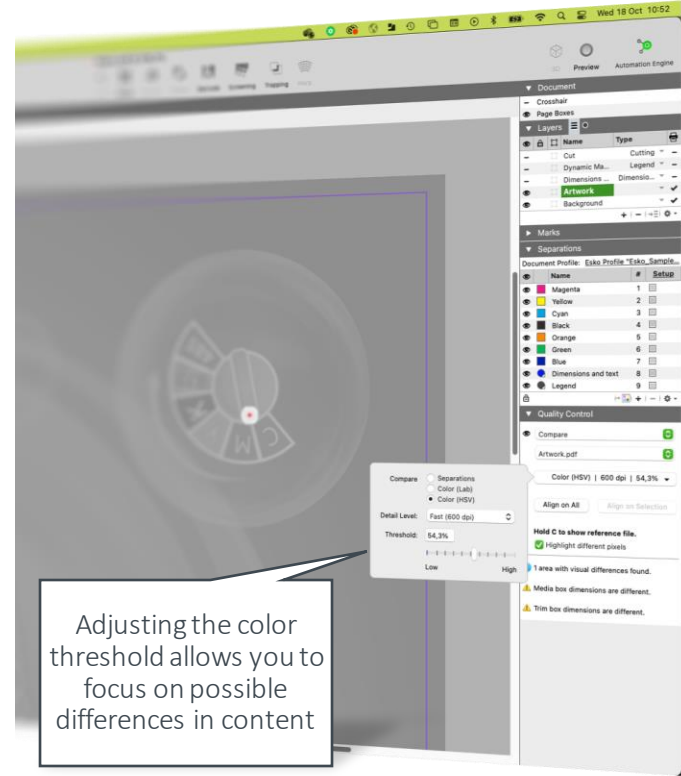
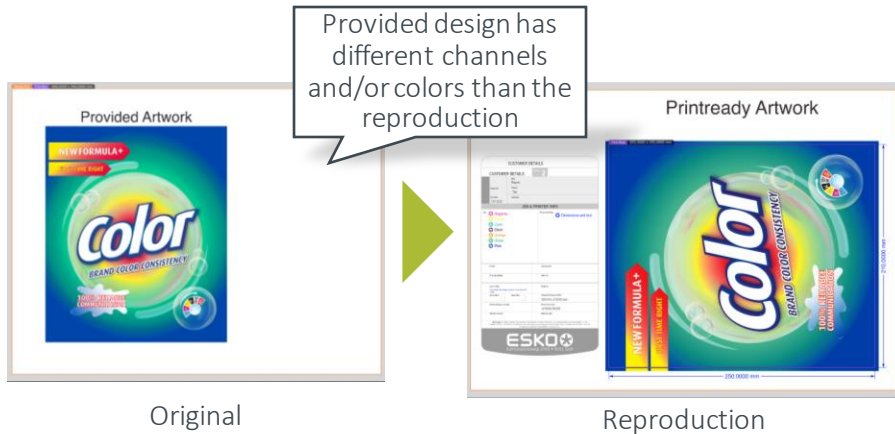
Compare: Automatic Rotate

- If needed the Compare Tool now automatically rotates the view of the reference file. No need anymore to alter the original artwork.



Compare: Compare Color HSV Mode

- When comparing files pixel by pixel color changes between versions can cover more severe mistakes
- HSV compare mode allows you to ignore shallow color changes to uncover differences in content



Compare In HSV Mode

Share & Approve

Share & Approve: Folder Approval

- Automatically start the approval cycle at upload when uploading from ArtPro+ or DeskPack

1

Share & Approve

Upload

Asset Name
Salmon.pdf

Folder
S&A-TestSite_Name/JH_ArtPro+

▼ JH_ArtPro+_folder

- Customer A
- Customer B
- JH Folder Approval
- JH_AESaas folder
- JH_subfolder

Create New Folder

The folder approval settings will be applied.

Cancel Upload

2

Share & Approve

Upload

Asset Name
Salmon.pdf

Folder
S&A-TestSite_Name/JH_ArtPro+

▼ JH_ArtPro+_folder

- JH Folder Approval
- JH_AESaas folder
- JH_subfolder
- Share & Approve

Create New Folder

☐ Apply folder approval settings

Cancel Upload

Approval Preferences

Forward Approvals ⓘ

- ☒ Don't allow
- ☐ Allow Approval Forwarding to registered users
- ☐ Allow Approval Forwarding to registered and unregistered users

Save

Cancel

Auto Start Approval Settings ⓘ

- ☒ Do not start approval after upload
- 1 Auto start approval after file upload
- 2 Ask to set approval cycle on file upload

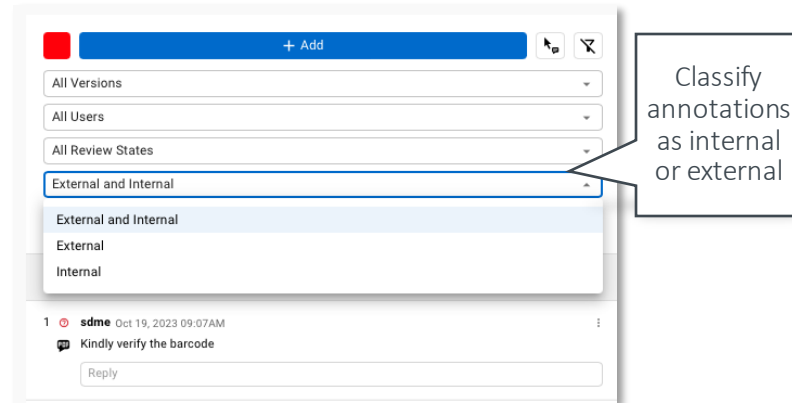
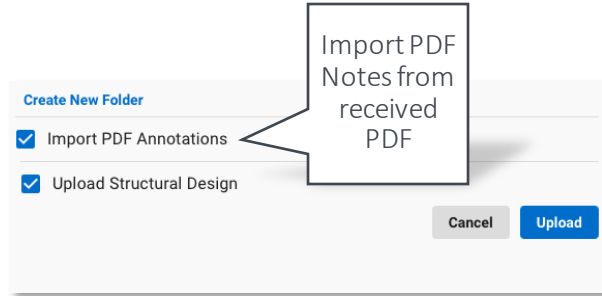
Share & Approve: Inside ArtPro+ (1)

Visualizing annotations from previous versions

Upload Linked ARD/ZAE for easy 3D viewing

Only store Annotations in Share & Approve for internal communications

Share & Approve: Inside ArtPro+ (2)



Easier Automation

PDF Action List: Grouping Actions

The screenshot displays the 'PDF Action List' interface. On the left, a sidebar contains a search bar and a list of categories: All, Document, Layers, Separations, Selection, Page Boxes, Transform, Clipboard, Barcode, and Flow Control. The 'Flow Control' category is selected, revealing a sub-list: Conditional Action (If... Then...), Group Actions, Run Existing Action List, and Show Message. The 'Group Actions' item is highlighted, and a callout box points to it with the text: 'Use "Group Actions" for bringing structure to your Action Lists and simplified duplication'. Below the sidebar, the 'Group Actions' section is expanded, showing a description: 'This action allows to group actions and to add a description of the group.' The main area on the right shows a list of actions grouped under 'Group Actions'. The first group has a description and two actions: 'Prepare selected image' and 'Clip and apply blend mode'. The second group has a description and four actions: 'Select Objects by Attribute', 'Rename Object', 'Select Objects by Attribute', and 'Rename Object'. At the bottom right, there are 'Cancel' and 'Save Action List' buttons.

Q Search

- All
- Document
- Layers
- Separations
- Selection
- Page Boxes
- Transform
- Clipboard
- Barcode
- Flow Control

Conditional Action (If... Then...)

Group Actions

Run Existing Action List

Show Message

Use "Group Actions" for bringing structure to your Action Lists and simplified duplication

Group Actions

This action allows to group actions and to add a description of the group.

► **Description:**

► **Group Actions** Prepare selected image ×

► **Group Actions** Clip and apply blend mode ×

▼ **Group Actions** ×

► **Description:**

► **Select Objects by Attribute** ×

► **Rename Object** ×

► **Select Objects by Attribute** ×

► **Rename Object** ×

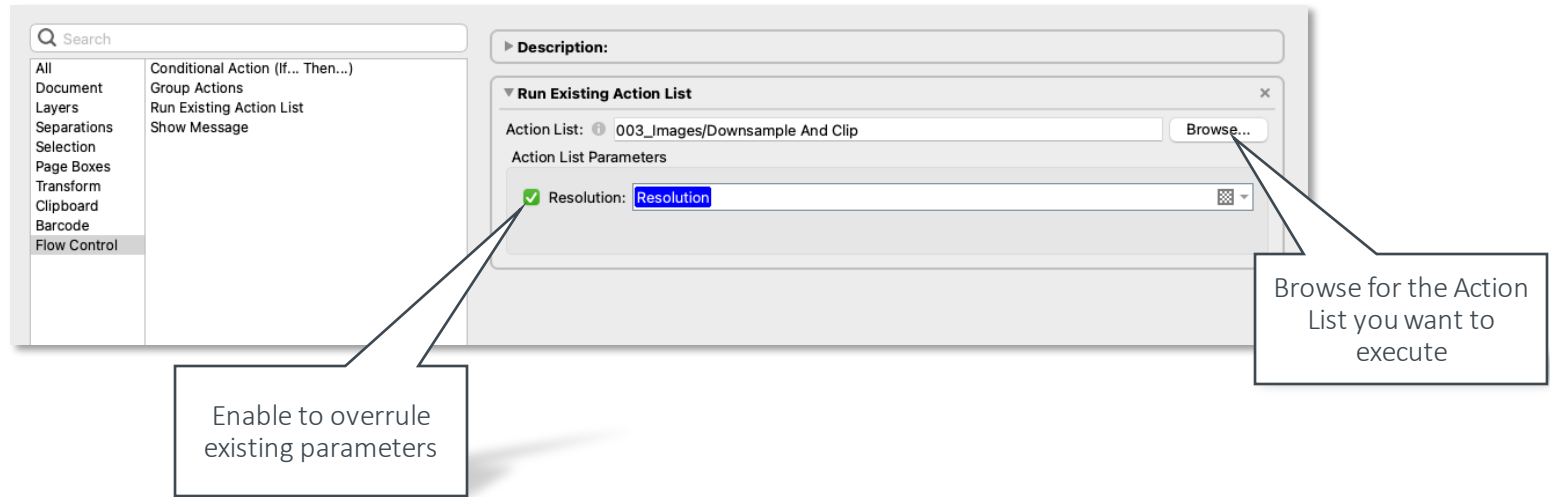
► **Select Objects by Attribute** ×

► **Rename Object** ×

Cancel Save Action List

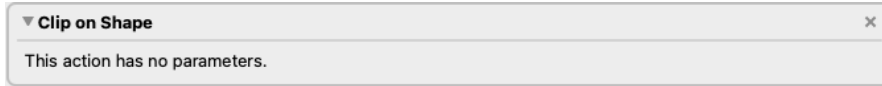
PDF Action List: Run Existing Action List

- “Run Existing Action List” helps you to simplify management and minimize the amount of needed Action Lists



PDF Action Lists: New Actions

- Clip on Shape

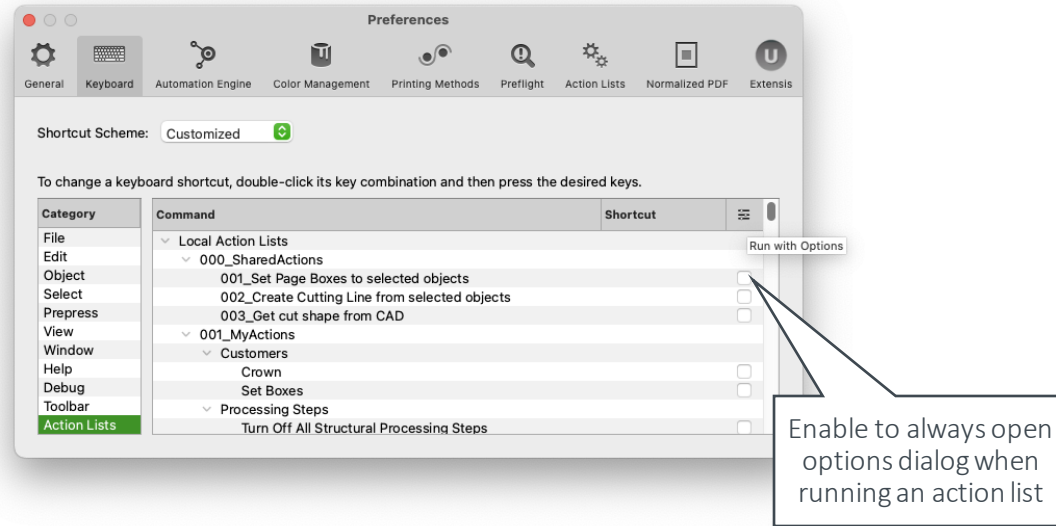


- Add Related Clip Groups to Selection



PDF Action Lists: New Actions

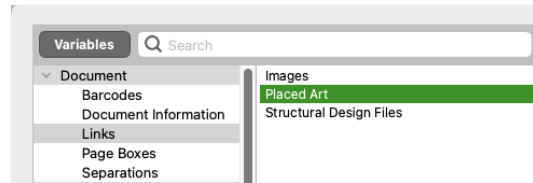
- New shortcut to “run with options”
 - Hold down “shift” key to invoke the options dialog before running an Action List



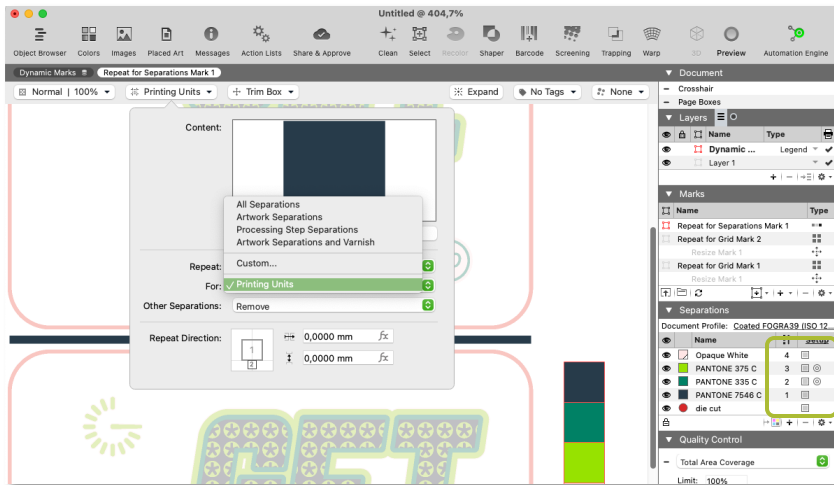
More Advanced Marks



Rotate Formula Support for Input File Mark and External File Mark



Text Marks – Updated Variable ‘Placed Art’



Repeat for Separations Mark: Support for Printing Units



Allow Resize Mark inside Repeat for Grid Mark

Export CIP3

Export CIP3

- ArtPro+ can provide offset front ends with ink coverage information

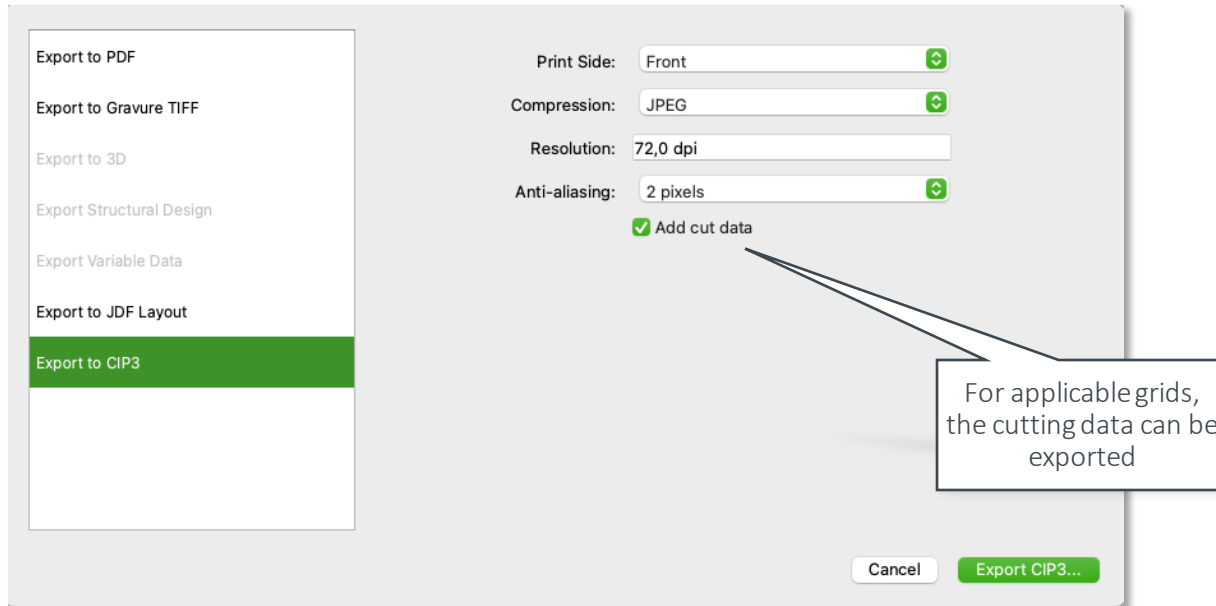
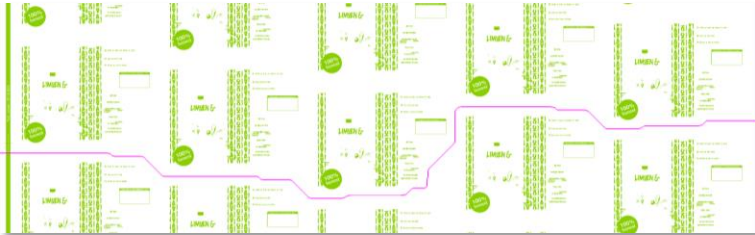


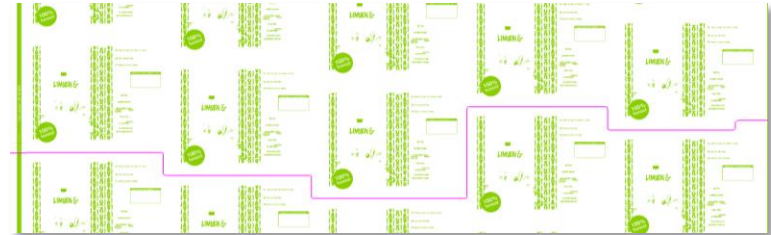
Plate Cut Improvements

Plate Cut: Algorithm Improvements

- The Plate Cut algorithm now prefers horizontal and vertical cuts over curves and supports roll-over bleeds



Old



New

Plate Cut: PDF Action List

- You can automate the creation of plate cutting paths with the new PDF Action and utilize “Selected Path for Plate Cut”

The screenshot shows a software interface with two main sections. The top section, titled "Select Objects by Attribute", contains a "Select" dropdown menu, a rule definition "All of the following rules are true:", and a specific rule "Name equals MyPlateCut Guide". The bottom section, titled "Create Plate Cutting Paths", includes settings for "Web Direction" (with two icons), "Plate Width" (set to "Media Box"), "Plate Circumference" (with radio buttons for "From grid or page box" and "Specify manually"), "Create Cutting Paths" (with a dropdown set to "Use Selected Path" and an unchecked "Use custom offset" option), "Corner Radius" (set to "0,0000 mm"), and "Gap at Seam" (set to "0,0000 mm").

Select Objects by Attribute

Select

All of the following rules are true:

Name equals MyPlateCut Guide

Create Plate Cutting Paths

Web Direction:

Plate Width: Media Box

Plate Circumference: ☒ From grid or page box ☐ Specify manually 0,0000 mm

Create Cutting Paths: Use Selected Path ☐ Use custom offset: 0,0000 mm

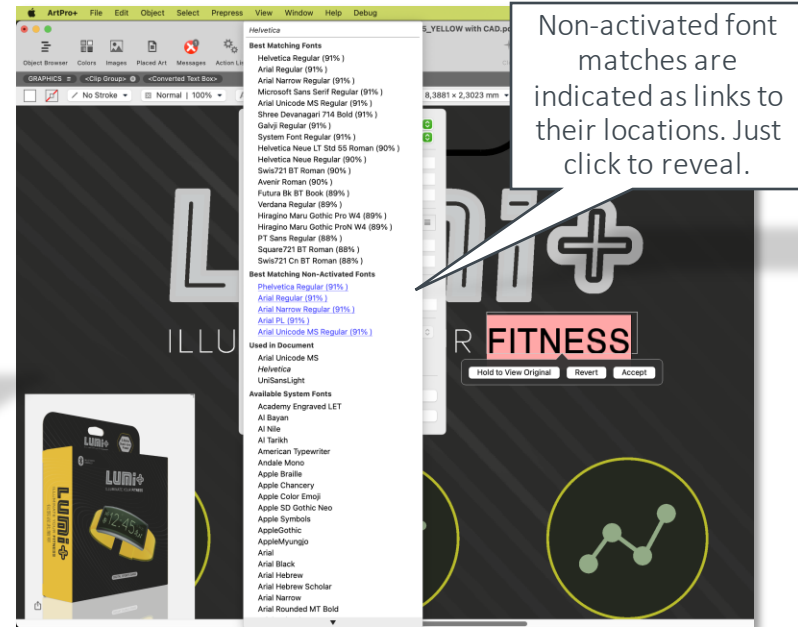
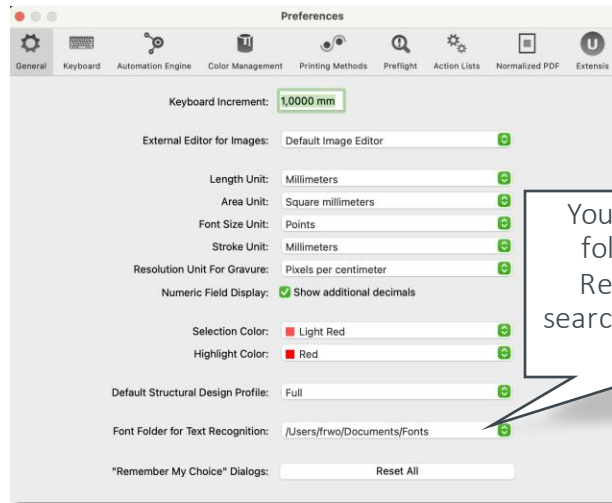
Corner Radius: 0,0000 mm

Gap at Seam: 0,0000 mm

Text

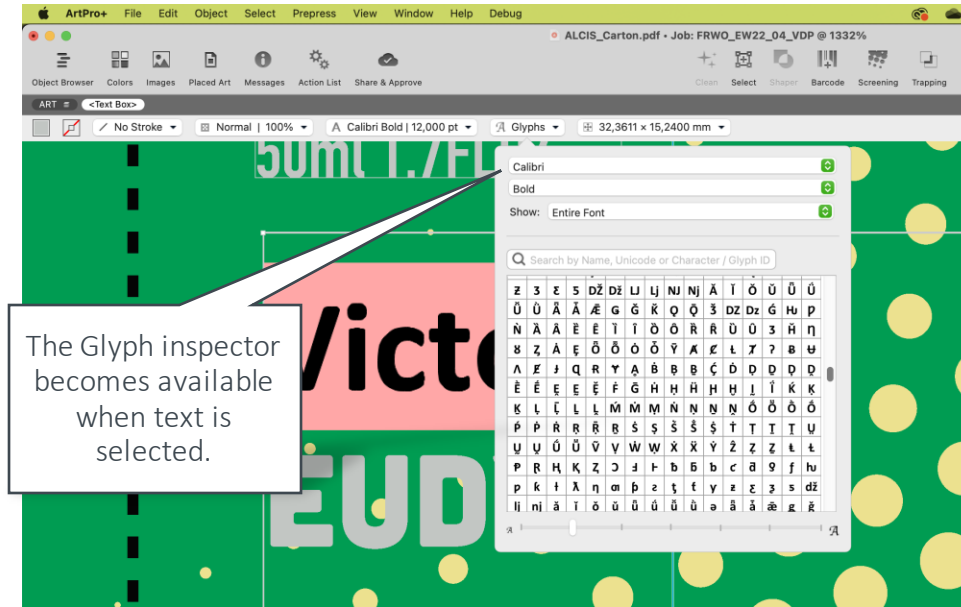
Text Recognition Including Non-activated Fonts

- You can expand the search for best matching fonts with a custom font folder



Glyph Inspector

- The new glyph inspector gives you full access to all available characters of a given font



Barcodes

Barcodes

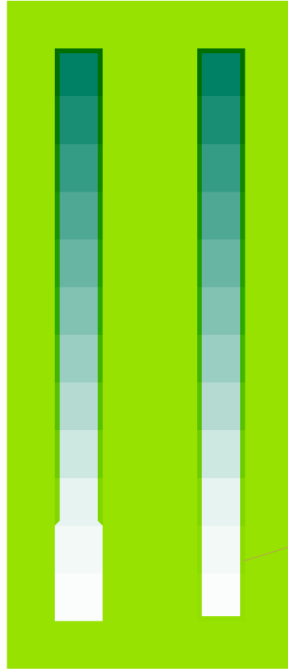
- Support for new GS1 Application Identifiers
- GS1 Application Identifier character set check (N, X, Y, Z)
- Small Box warnings for 2D codes

AI	Data Content	Format	FNC1 Required
4330	Maximum temperature in Fahrenheit	N4+N6+[-]	(FNC1)
4331	Maximum temperature in Celsius	N4+N6+[-]	(FNC1)
4332	Minimum temperature in Fahrenheit	N4+N6+[-]	(FNC1)
4333	Minimum temperature in Celsius	N4+N6+[-]	(FNC1)
7241	AIDC media type	N4+N2	(FNC1)
7242	Version Control Number (VCN)	NX+X...25	(FNC1)
8030	Digital Signature (DigSig)	N4+Z...90	(FNC1)

Trapping

Trapping Improvement: Flexo Print

- Trap Highlights for Flexo Print



Trapping Mode: Trapping

Automatic Manual

Trapping ☐ Pullback

Distance:

Truncate: ☐ ☐

Joins: ☐ ☐

End Caps: ☐ ☐

Image Traps: Extend Data

Close gaps smaller than:

Overshoot: ☒ Allow overshoot

☒ **Trap highlights for flexo print**

First Printable Dot:

Prints as:

Range:

i 62 objects or groups have trap tags

i Only artwork layers with printing state on will be taken into account.

Cancel Update Trap Layer

Providing Flexo Print parameters enables ArtPro+ to take dot gain in highlights into account when trapping

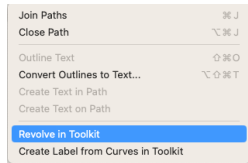
Trapping Improvement: Meshes

- The Trapper is now recognizing meshes and is creating traps accordingly

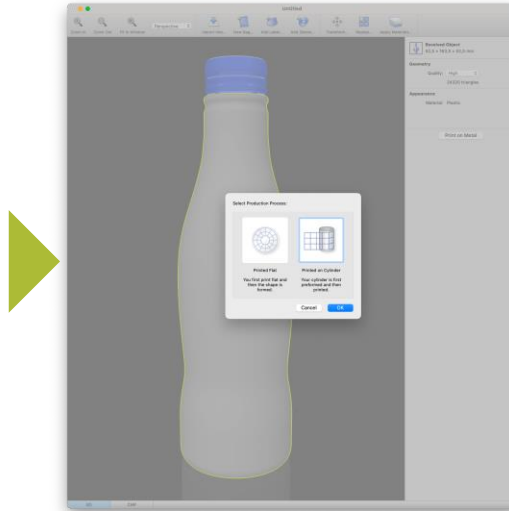
Warping

Warping Improvements: Print On Metal Cylinder

- Studio Improvements allow you to predistort for preformed metal containers



ArtPro+



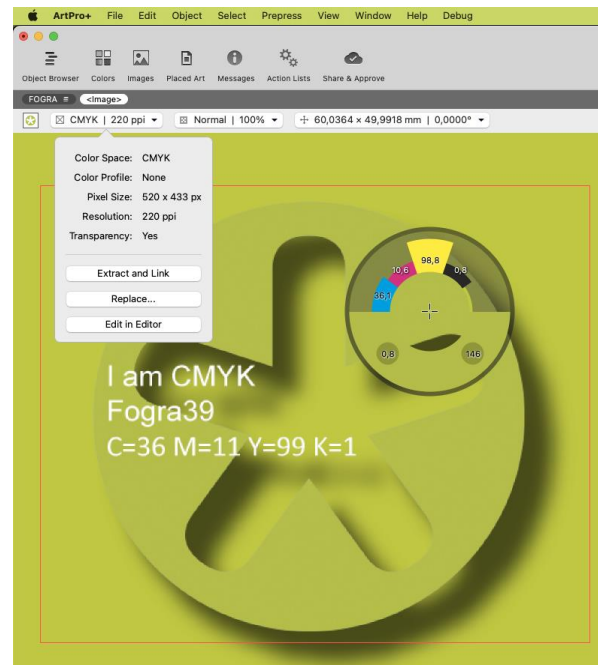
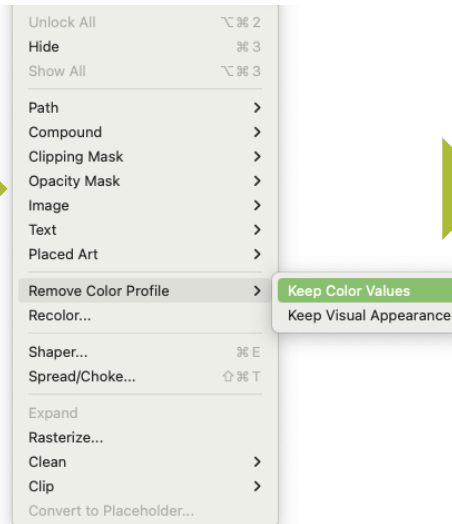
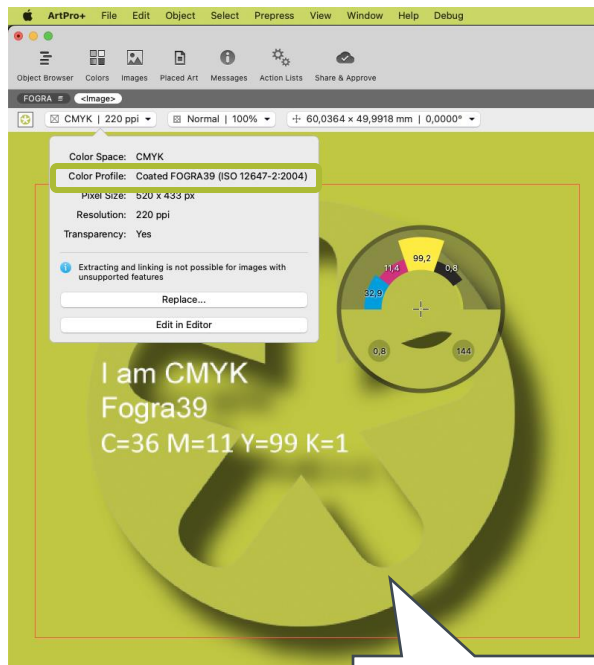
Studio



ArtPro+

More Functionality

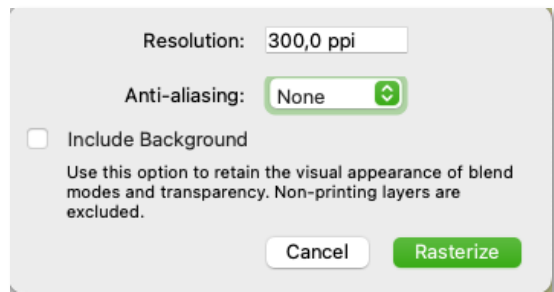
Color Management Improvements



Images with tagged ICC profiles can now be resolved into the document profile

Rasterize Improvements

- Avoid Staircasing in Clipping Masks of Rasterized Objects



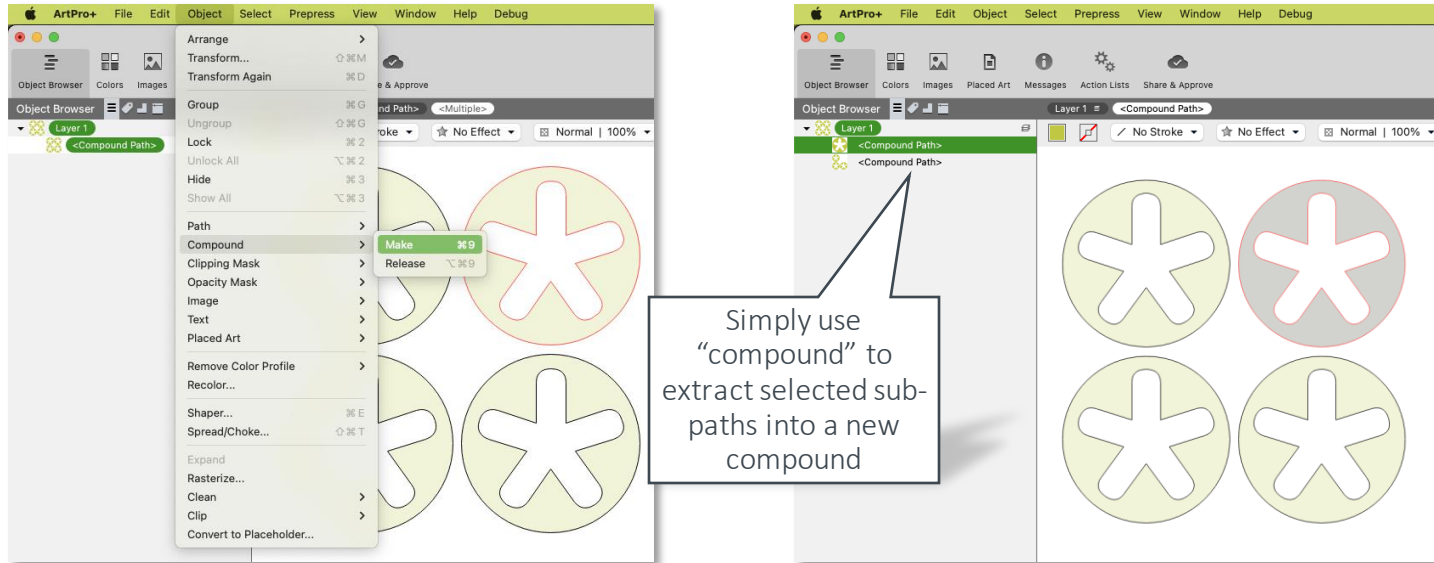
Old



New

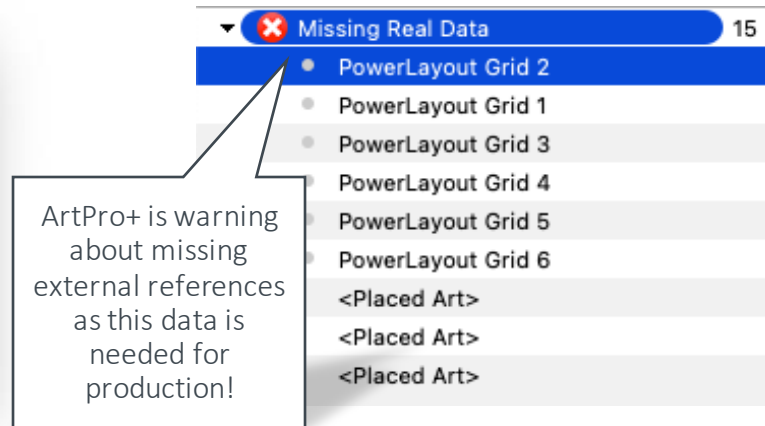
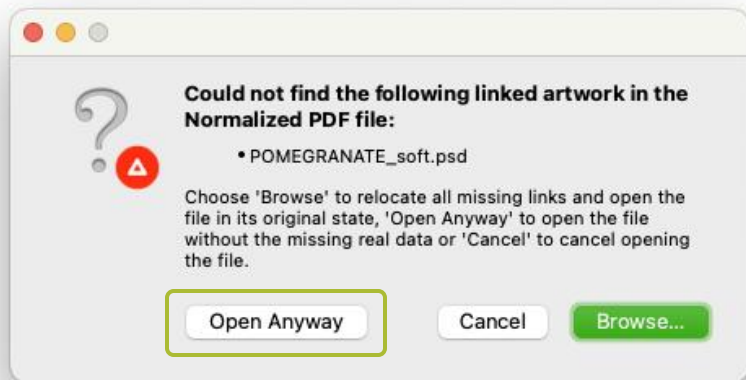
Remake Compound

- Remake compound from selected sub-paths.



Classic Normalized PDF

- When opening classic Normalized PDF files, you can now ignore missing external references



ESKO*