

ArtiosCAD 18

What's New?

Richard Deroo

Product Manager

June 2018

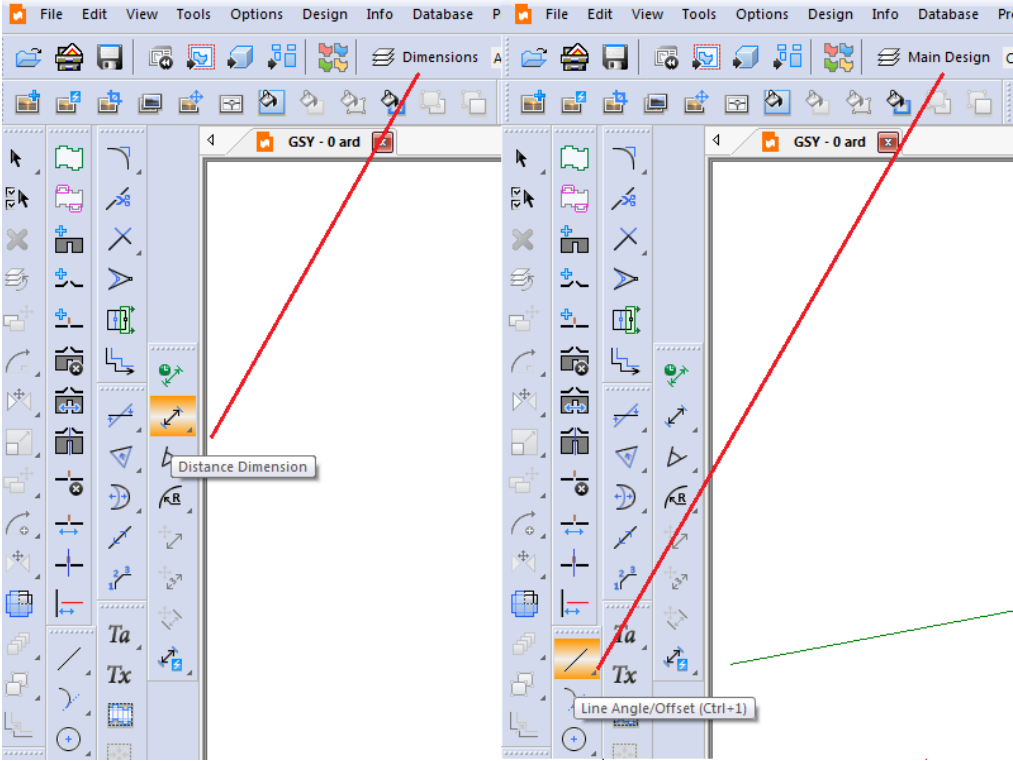


Packaging Simplified

- Simplifying user navigation
- Speeding up design time
- Eliminating wasteful steps

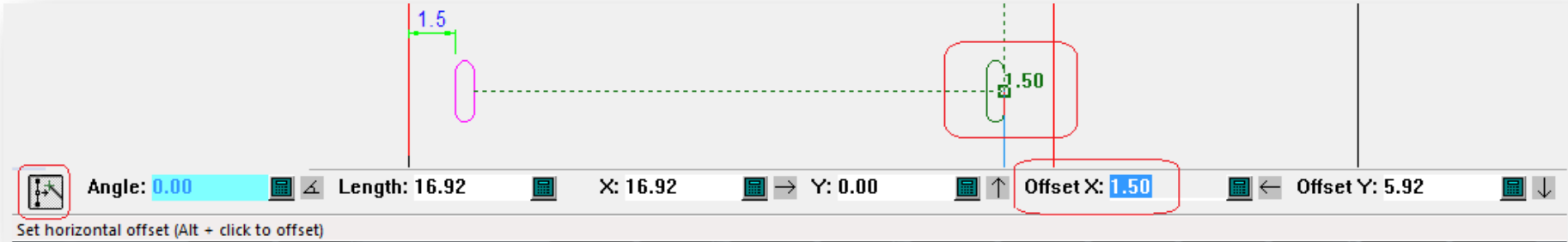
Automatic Layer Switching

- Let ArtiosCAD do the switching for you, **automatically**
- **Save time** by reducing multiple mouse-clicks
- **Reduce errors** of drawing in the wrong layer



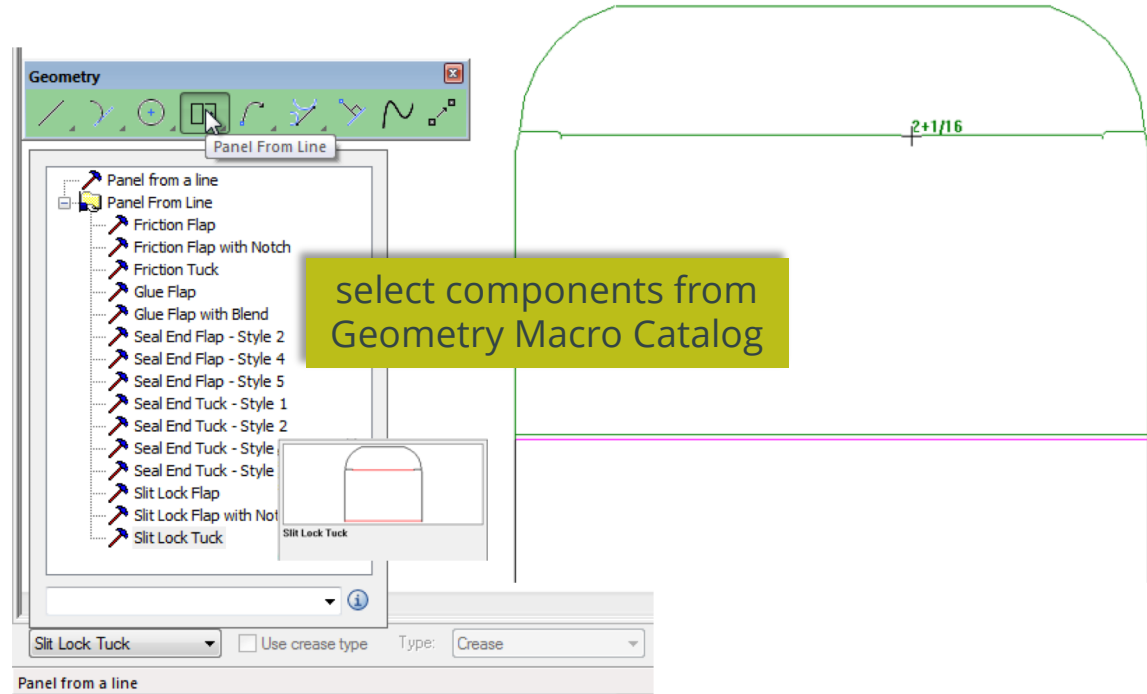
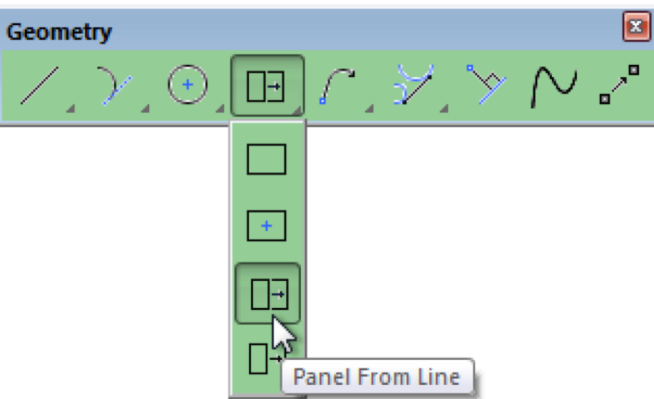
Offset from Point or Line

- **Save time** while designing
- **Eliminate** the need for **construction lines**



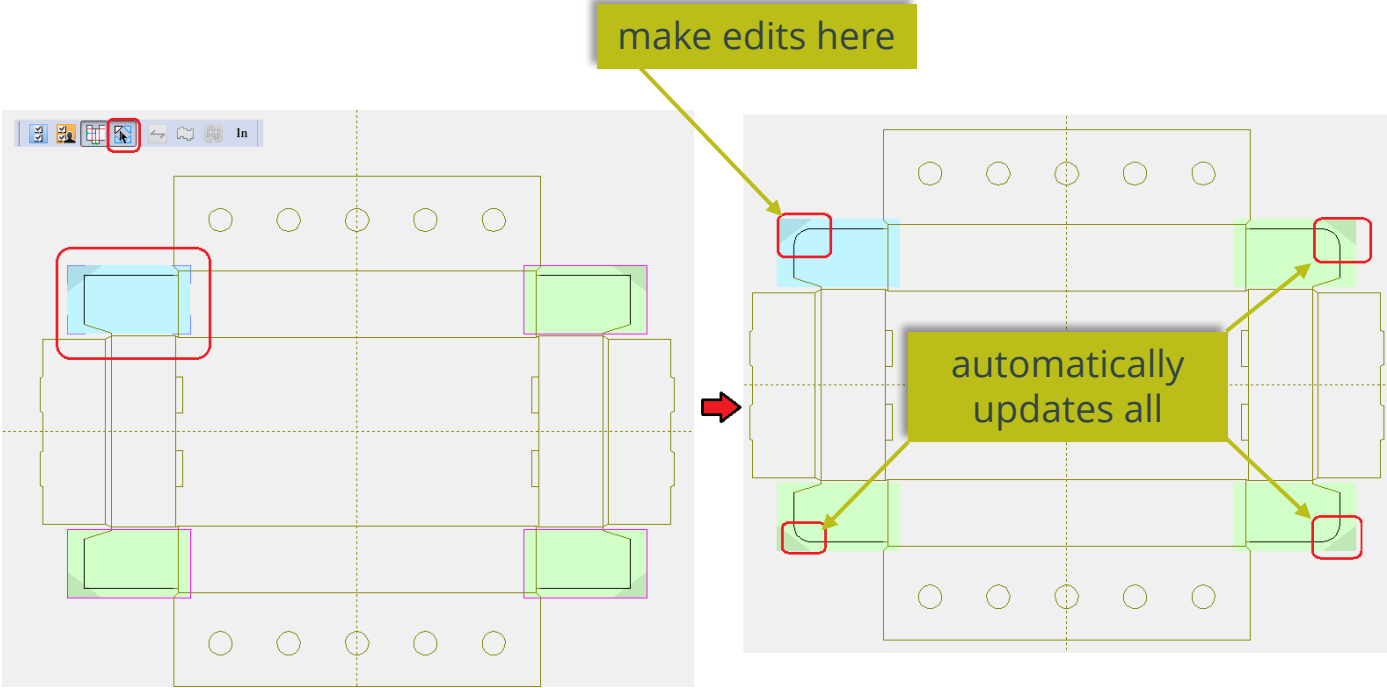
Create Panel from Line

- **Speed up** design time
- Less tools needed, **less-clicks**



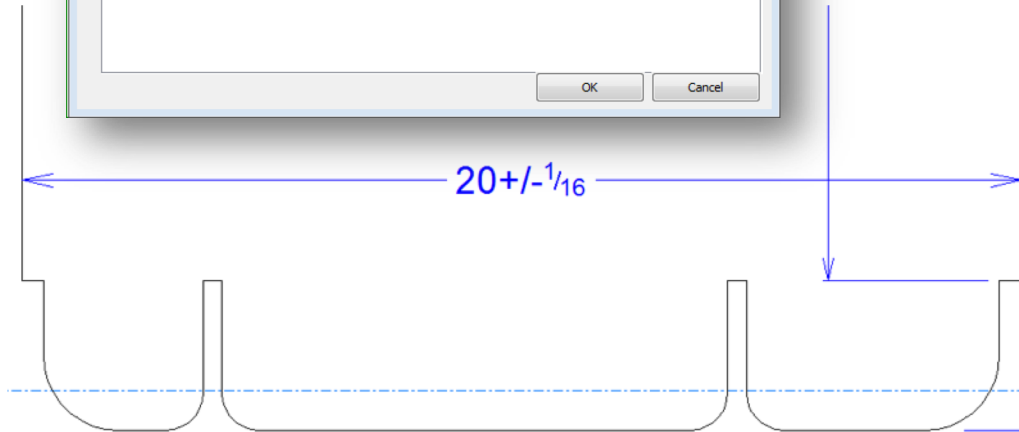
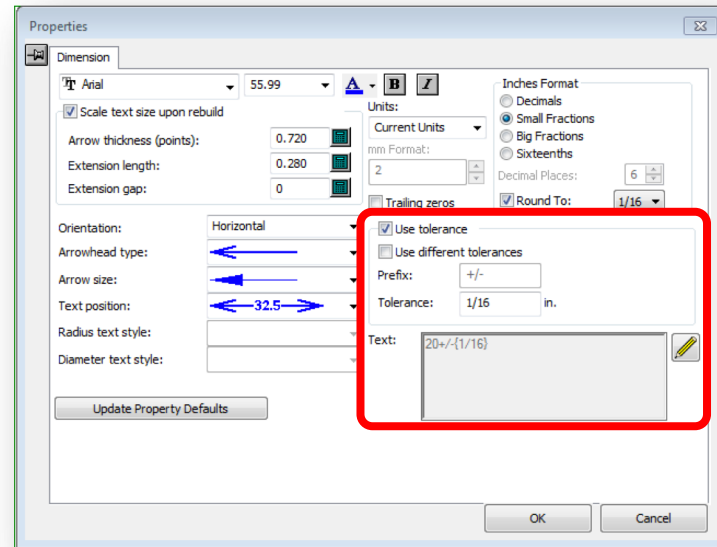
Auto-repeat Congruent Geometry

- Draw once, update many
- Enables **rapid design changes**



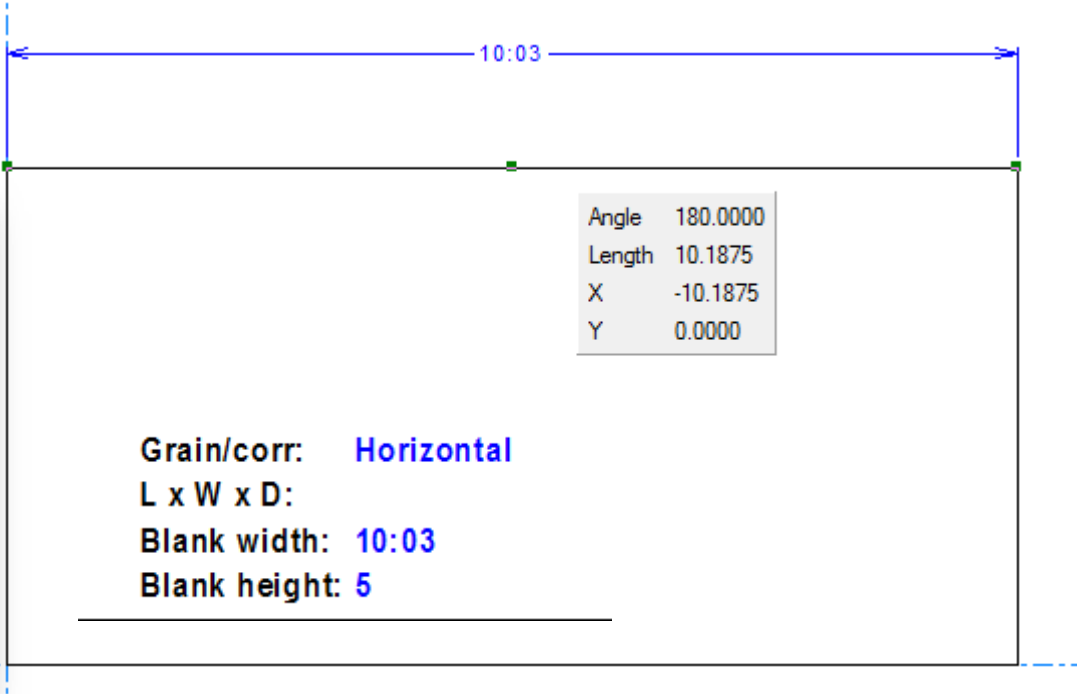
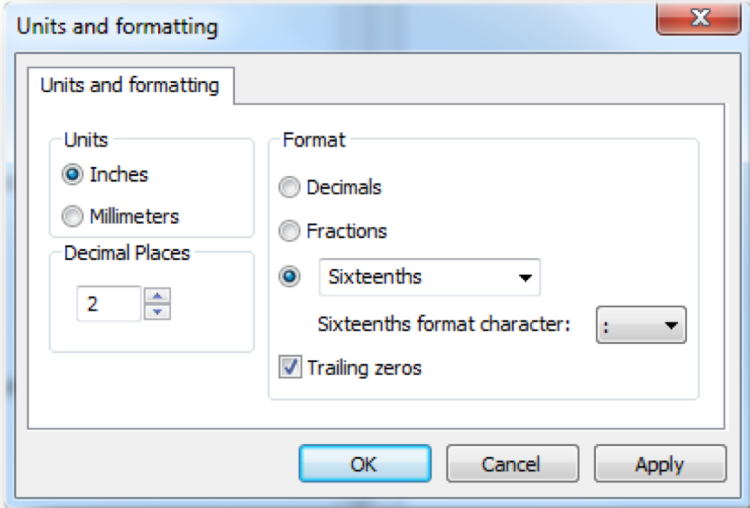
Dimension with Tolerances

- **Create improved and more detailed** reports and specification drawings
- **Improves the communication** to your clients



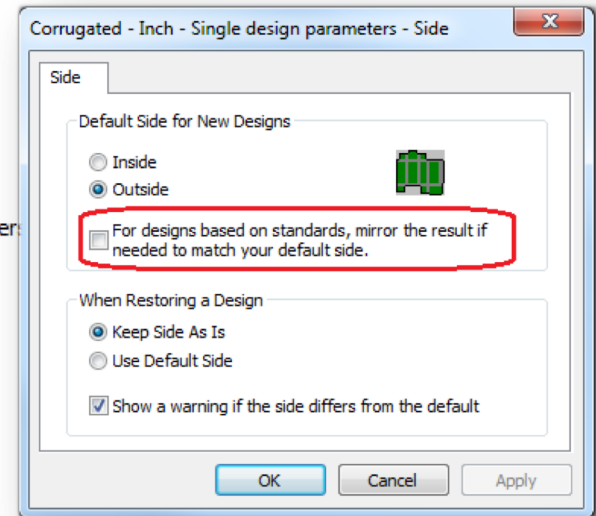
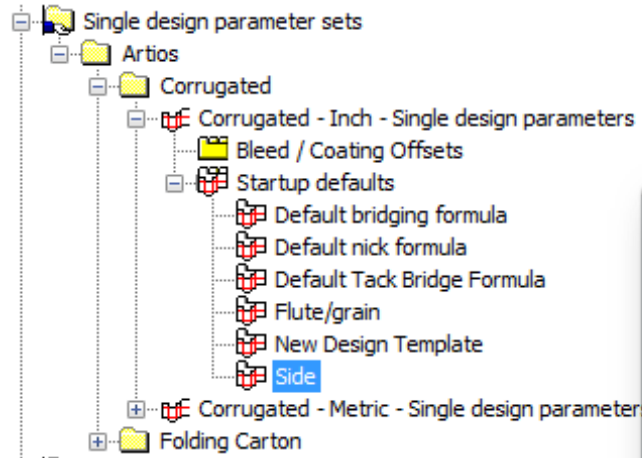
Unit Formatting for Sixteenths

Meet the needs of the
production floor



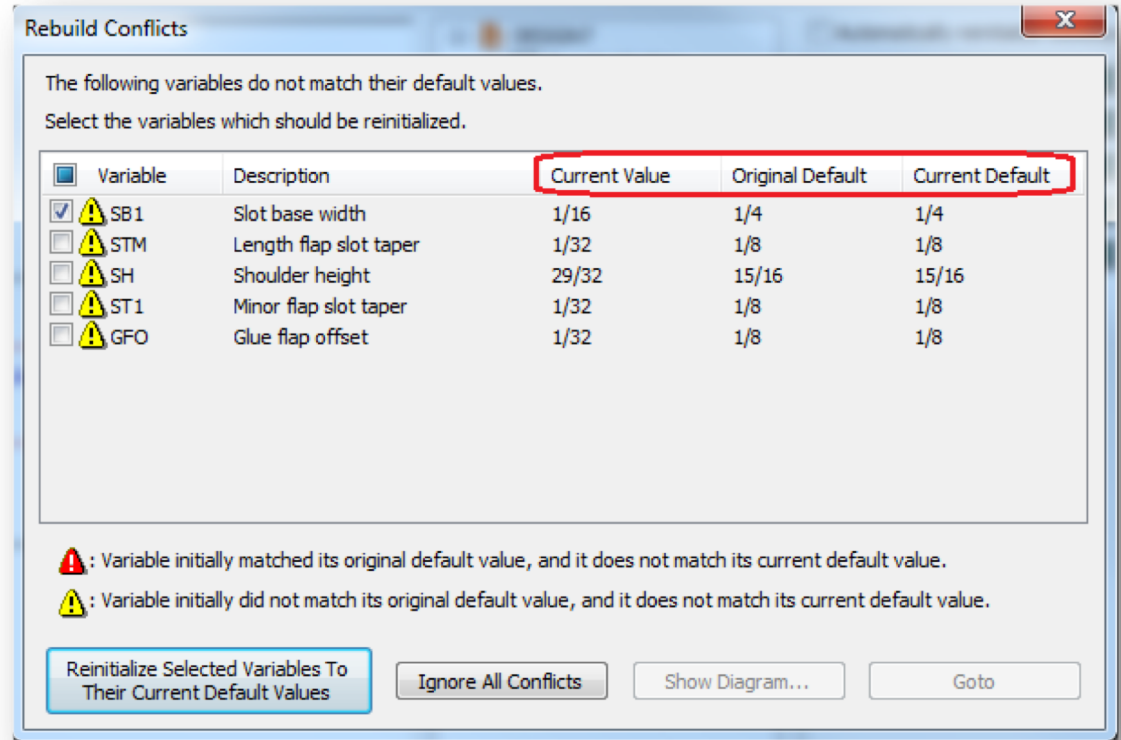
Honor Parameter Set Side for Standards and GM

- Reduces potential errors
- **Automatic mirroring** of design saves time



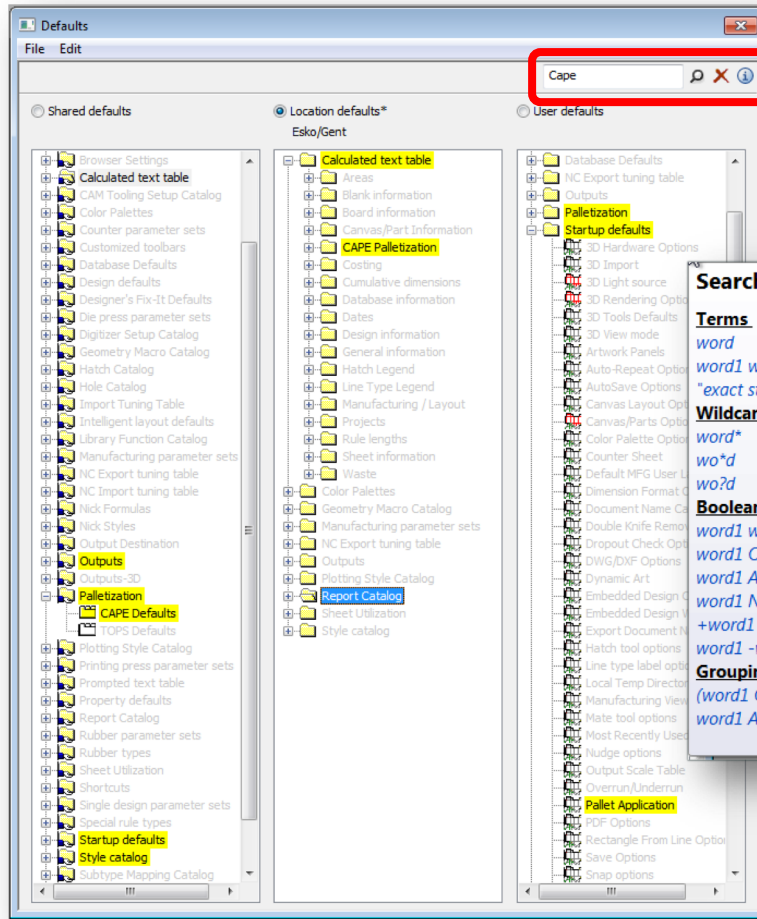
Improved Feedback on Rebuild Conflicts

- More **user-friendly** messages
- **Easier to identify** and handle conflicts



Defaults Search Tool

- **Reduces frustration** and saves valuable time
- Speeds up the learning curve for new users



Searching Syntax Examples

Terms

word
word1 word2 ... wordN
"exact string"

Wildcards

*word**
*wo*d*
wo?d

Boolean

word1 word2 (same as: *word1 OR word2*)
word1 OR word2
word1 AND word2
word1 NOT word2
+word1 word2
word1 -word2

Groupings

(word1 OR word2) AND word3
word1 AND (word2 OR word3)

ESKO CUSTOMER TESTIMONIAL

“Efficiency is great when using ArtiosCAD, due to its ease of use.

— **Design Manager, Large Enterprise Media & Entertainment Company**

Source: Design Manager, Large Enterprise Media & Entertainment Company



✓ Validated

Published: Feb. 14, 2018 TVID: E5D-600-295

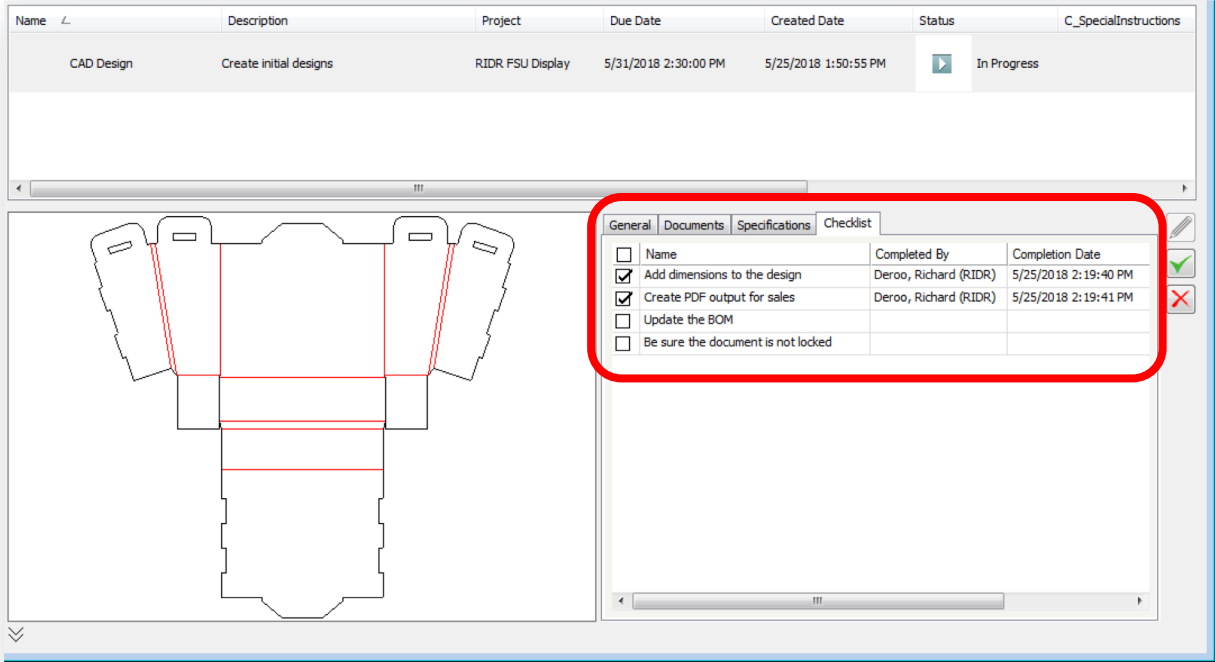


Packaging Connected

- Connecting the packaging ecosystems
- Eliminate wasteful steps

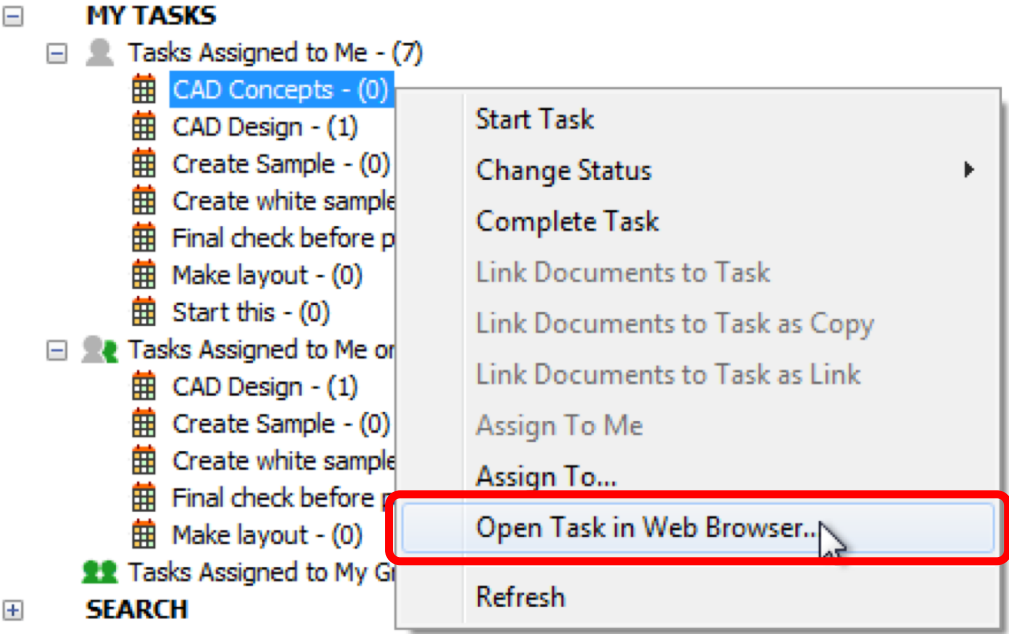
Task Checklists

- Match the task workflow in WebCenter
- Enforce **mandatory checklist** items
- Improves overall process management



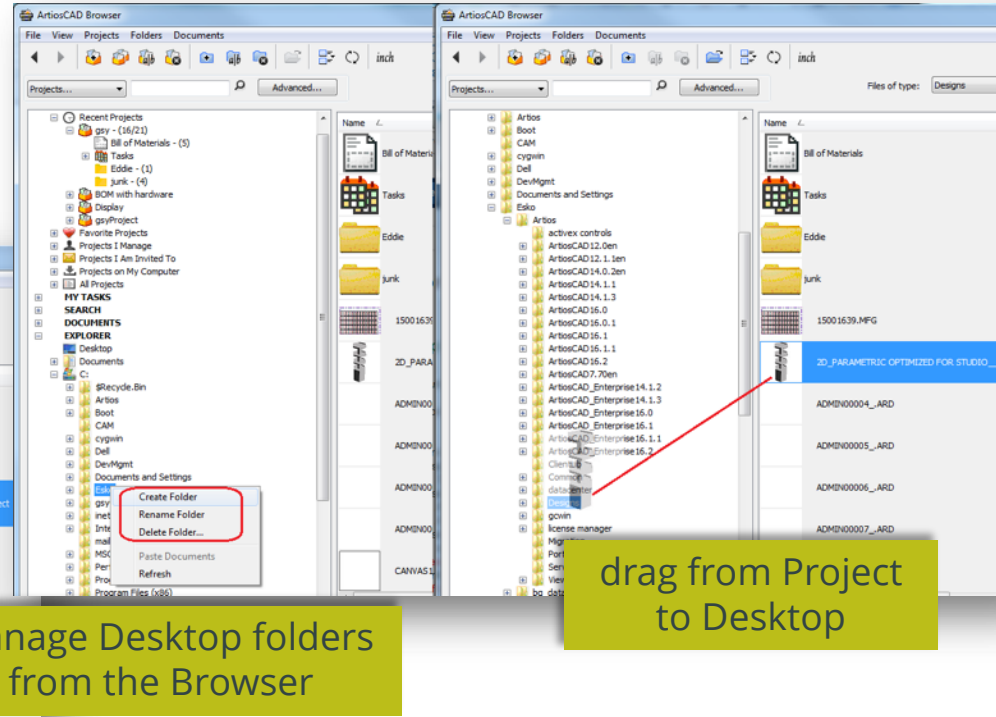
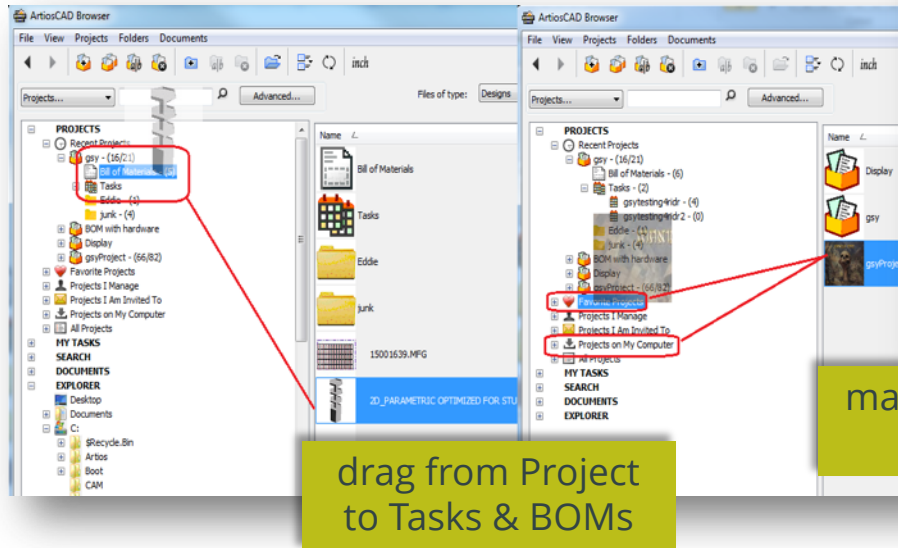
Open Task in WebCenter

- Simple **one-button** click brings you where you need to be
- **No wasted time** searching for the task in WebCenter



More Drag & Drop in the Enterprise Browser

- **More intuitive** behavior
- Easy transition to ArtiosCAD Enterprise



ESKO CUSTOMER TESTIMONIAL

“ ArtiosCAD by itself is a powerful tool.
Combined with webcenter and
Automation Engine it quickly becomes an
essential combination.

— Eric Gilger, Design Manager, All Packaging Co.

Source: Eric Gilger, Design Manager, All Packaging Co.



Published: Feb. 14, 2018 TVID: 183-676-E49



ESKO*