

ArtiosCAD Enterprise 18 Release Notes

Release Contents

The ArtiosCAD Enterprise 18 shipment package contains:

- ArtiosCAD Enterprise installation media
- ArtiosCAD Enterprise release notes (this document)
- System Requirements document (PDF format)

Please contact your local Esko CAD support if you have any questions. In the U.S., this number is (877) 363 4091.

Problem Fixes

Customer reported fixes

ACAD-5505 Canvas default settings are ignored

Important internal fixes

ACAD-5405 Can't D&D move, copy or link a doc to a task which has a specified folder

ACAD-5493 Incorrect slash correction (backslash vs forward slash) in WC url is not saved

ACAD-5501 Can't copy data from attributes or other text fields in the database information dialog

ACAD-5612 Bug in ATC 16.1.1 Browser Settings:

ACAD-5625 Artios – After saving files menu options are greyed out.

Important Notes for All Users

- **ArtiosCAD Enterprise client and WebCenter interoperability:**
 - In order to open a task in WebCenter, view and manage a checklist and drag & drop a document to a task with a folder, WebCenter 18 **must** be used in tandem with ArtiosCAD Enterprise 18.

- The ArtiosCAD Enterprise 16.1.1 client is forward compatible with WebCenter 18, except functionality provided in WebCenter 18 may not be available to ArtiosCAD Enterprise 16.1.1
- The ArtiosCAD Enterprise 18 client will be backward compatible with WebCenter 16.1.1 except for features provided by WebCenter 18.
- **Flexnet** is the only licensing system utilized in ArtiosCAD enterprise 18. Users must be prepared to convert the licensing from the hardware key, Sentinel LM or Elan LM to Flexnet if they are upgrading from ArtiosCAD 7.
- **If the deployed licensing for ArtiosCAD is a network license, the license server *must* be updated with the new system controller provided on the installation media.**

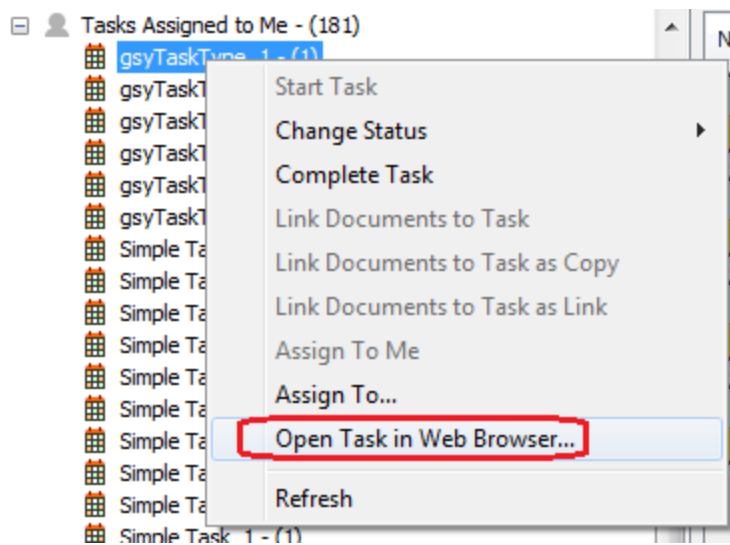
ArtiosCAD Enterprise 16.1 Feature Overview

Performance

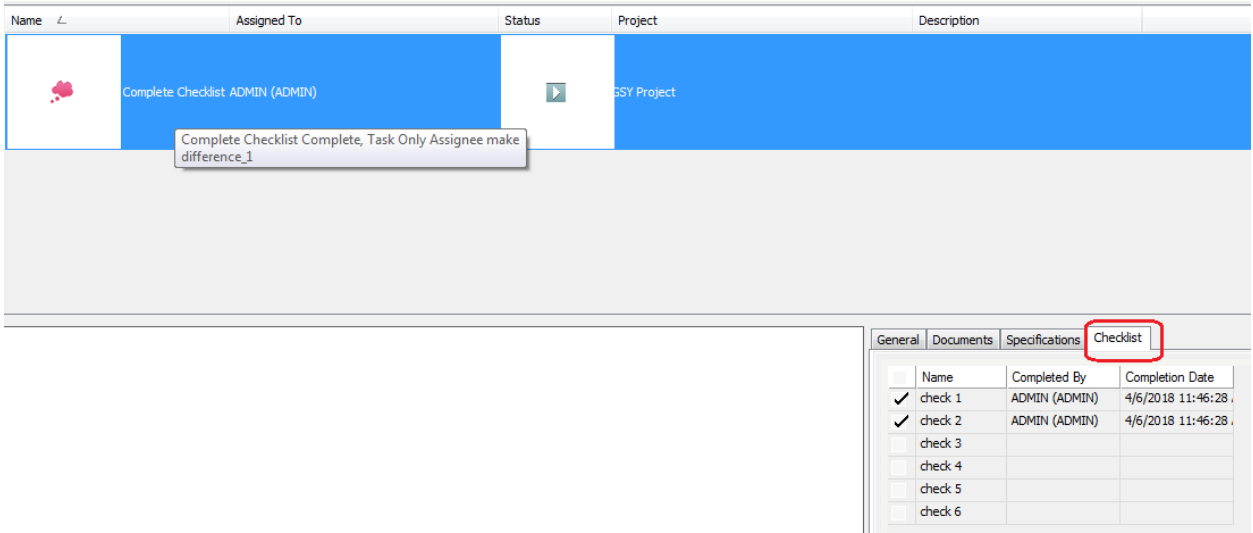
Integration

Enhancements

- A task can be directly opened in WebCenter.

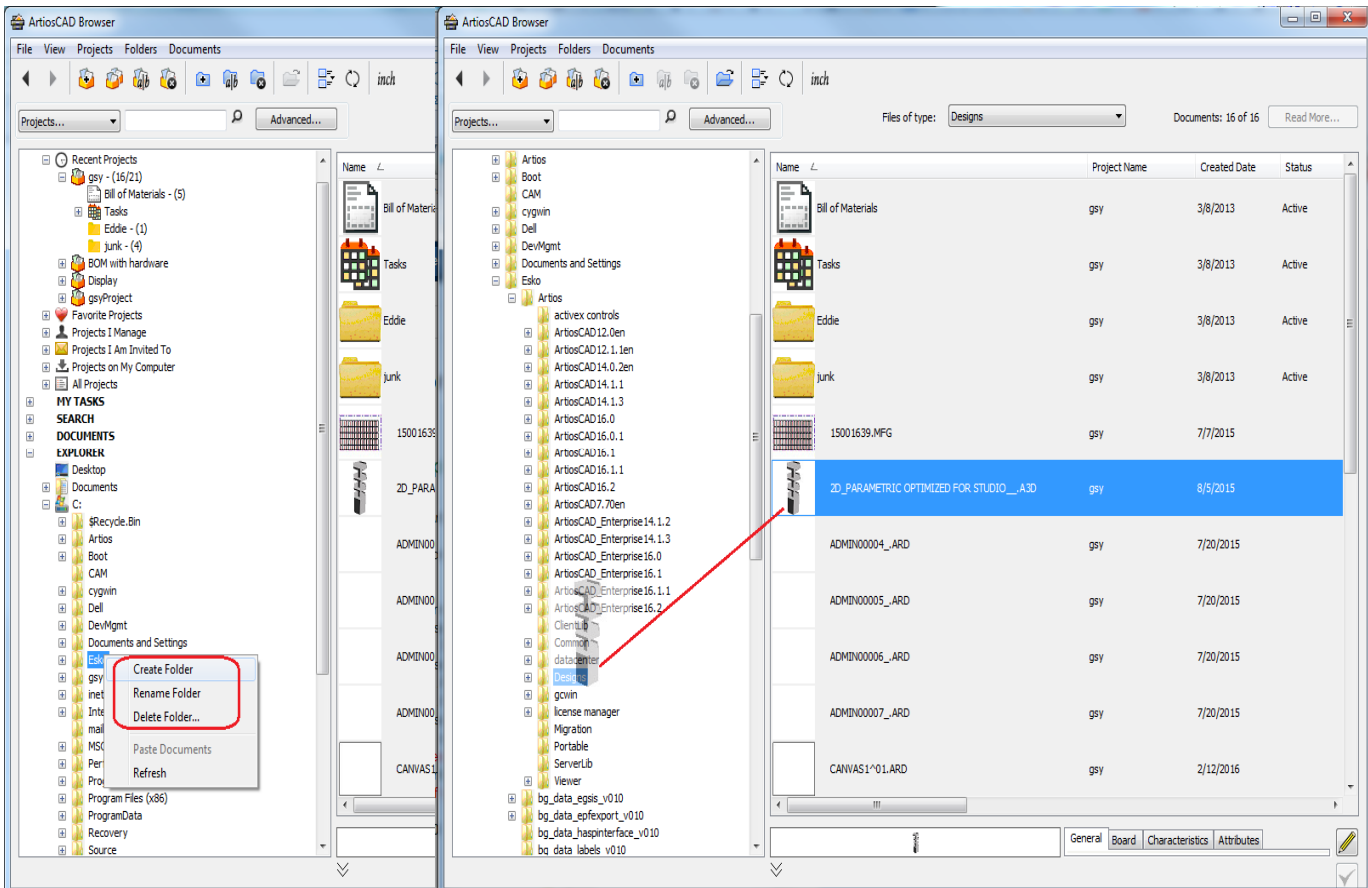


- A task checklist can now be viewed and its items can be marked as completed by a structural designer.



- The enterprise project browser has been enhanced with new modes of drag and drop.

Unmanaged:



Managed to BOM or other project nodes:

