

ArtiosCAD 18.0.1 Release Notes

What's new in:

- [Design](#)
 - **Resizable Design Templates... ECMA and FEFCO libraries updates**
 - **Canvas Parametric part count** specified via a variable
- [3D](#)
- [Layout](#)
 - **Honeycomb layout** of circular/elliptical shapes
 - **Canvas layout** has been extended in functionality
- [Manufacturing](#)
- [General](#)
- [Infrastructure](#)
 - **Future release post 18.0.1 ArtiosCAD will utilize Unicode/UTF-8** thereby allowing characters from different languages to be added to text within ArtiosCAD.
- [Integration](#)
- [View](#)
- [Enterprise](#)

[Problem fixes](#)

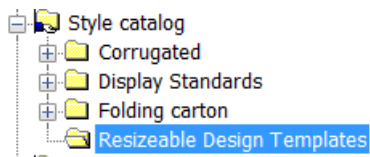
[Important notes for all users](#)

What's new?

Design Enhancements

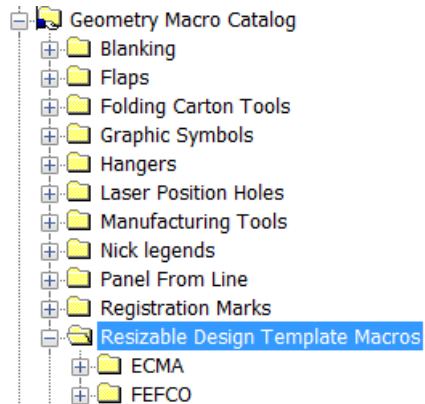
- **Resizable Design Templates (RDTs)**, aka, standards, for Fefco and ECMA have been updated in the ArtiosCAD style catalog. Updates will be an ongoing endeavor and new styles will be added in future releases.

Navigate to Options > Defaults > Style Catalog > Resizable Design Templates



See <Artios folder>\<version>\Instlib\<library>\Documentation for xls files that describe how the RDT was constructed.

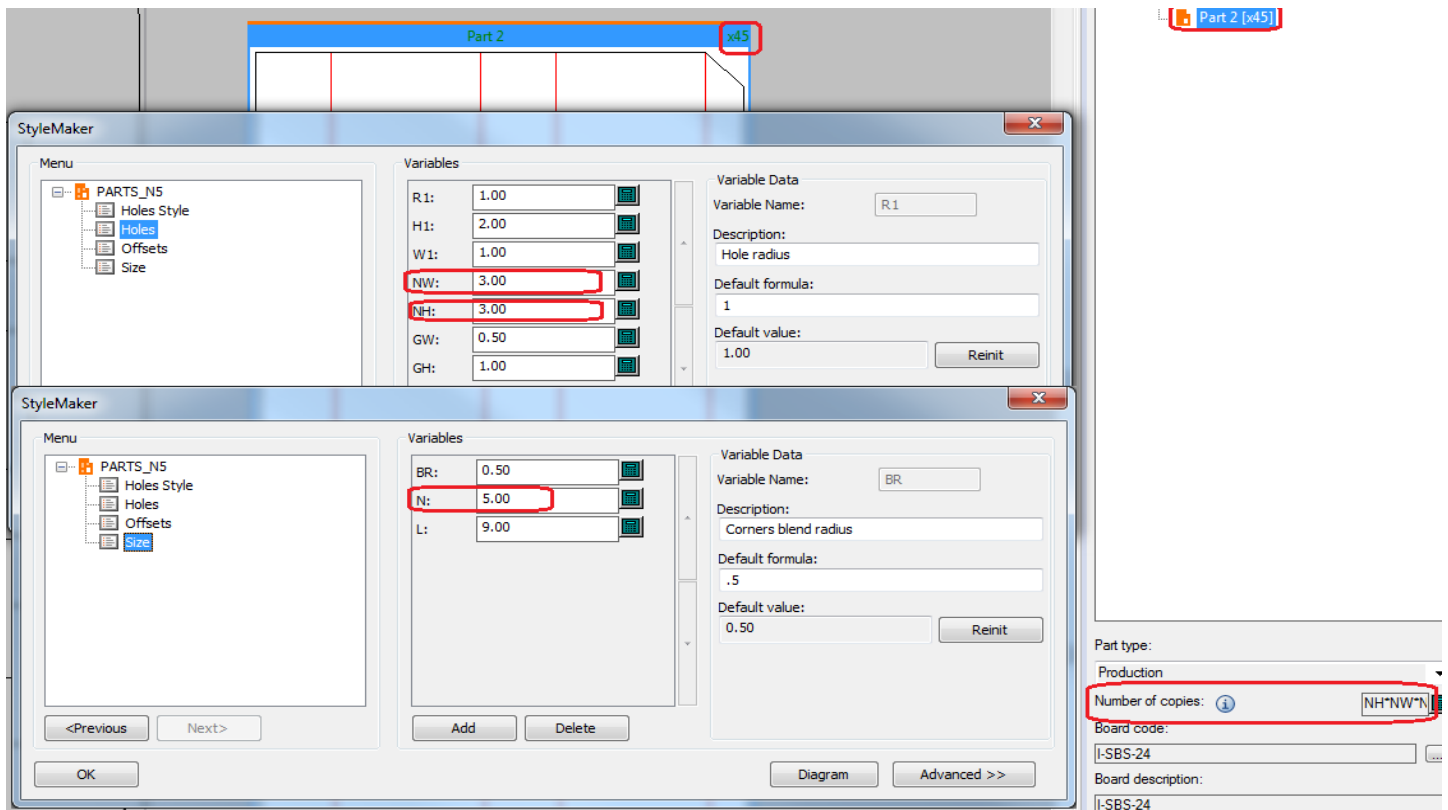
Example: C:\Esko\Artios\ArtiosCAD18.0.1\InstLib\ECMA\Documentation\ET_A20.20.01.01_.xlsx
 Geometry macros which were used to construct the RDTs have also been added.



See <Artios folder>\<version>\Instlib\Geometry macros\<library>\Documentation for xls files that describe how the geometry macro was constructed.

Example: C:\Esko\Artios\ArtiosCAD18.0.1\InstLib\Geometry macros\ECMA\Documentation\EGM_A20_21_30_Cover_Tuck_flap_Bottom.xlsx

- A canvas part can use a parametric variable for the number of copies of that part. In this example the number of copies of *Part 2* needed for this display is based on an expression of variables which determine the number of features. When the design is rebuilt and the variables change, the number of copies will change.



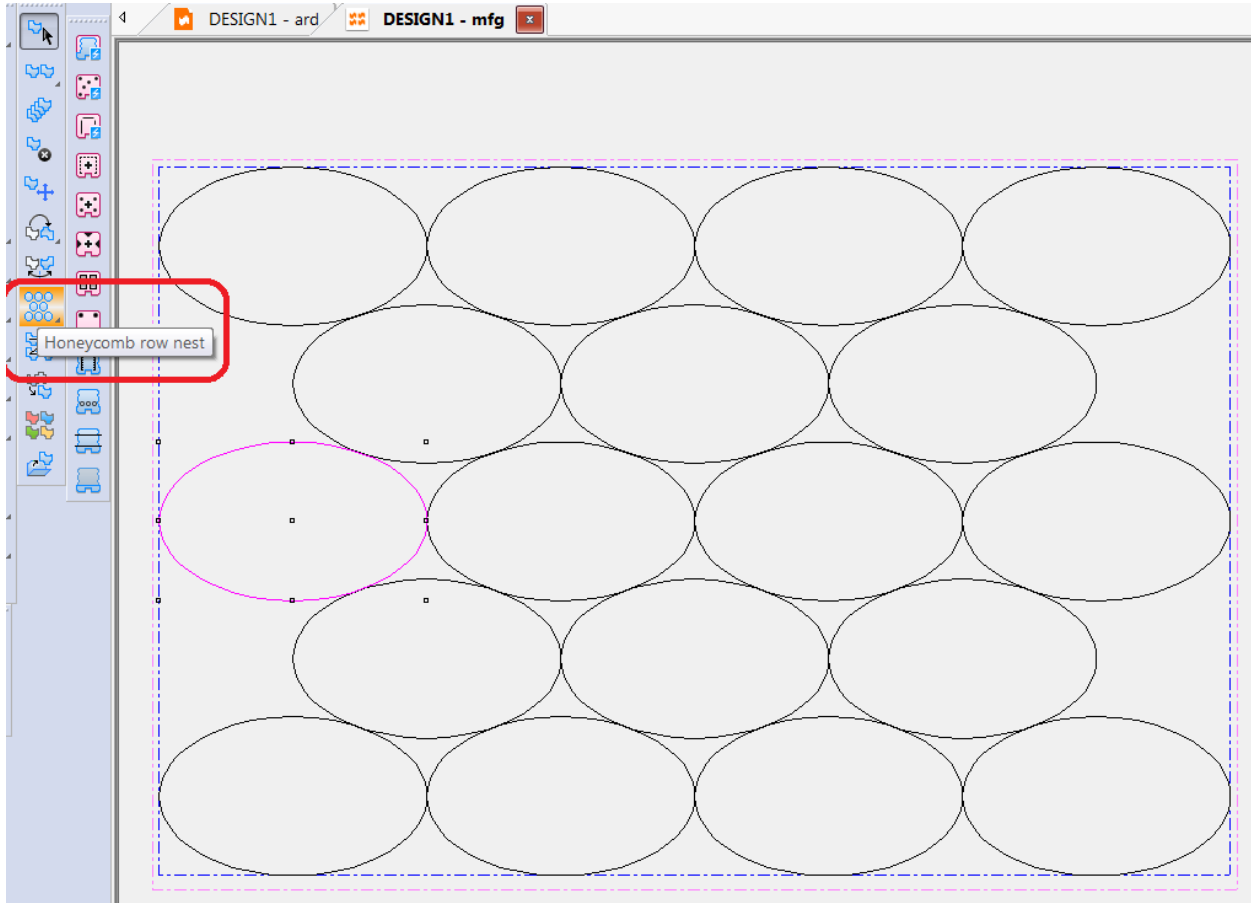
- **Artwork panels saved in a standard** added to the style catalog will be preserved in the resulting ARD.

3D Enhancements

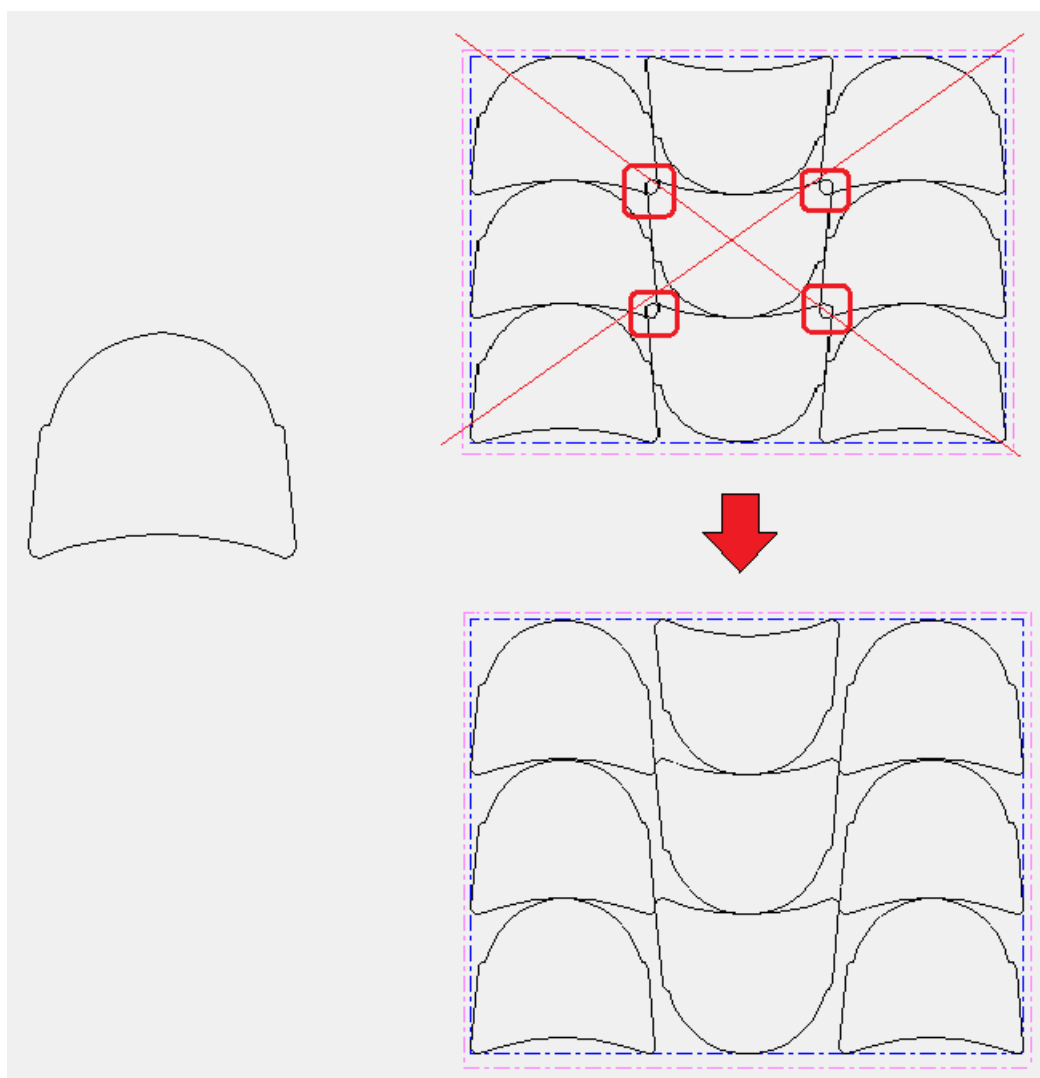
- The 3D *Panel mate* tool has been moved from the *3D designer* module to *3D*.

Layout Enhancements

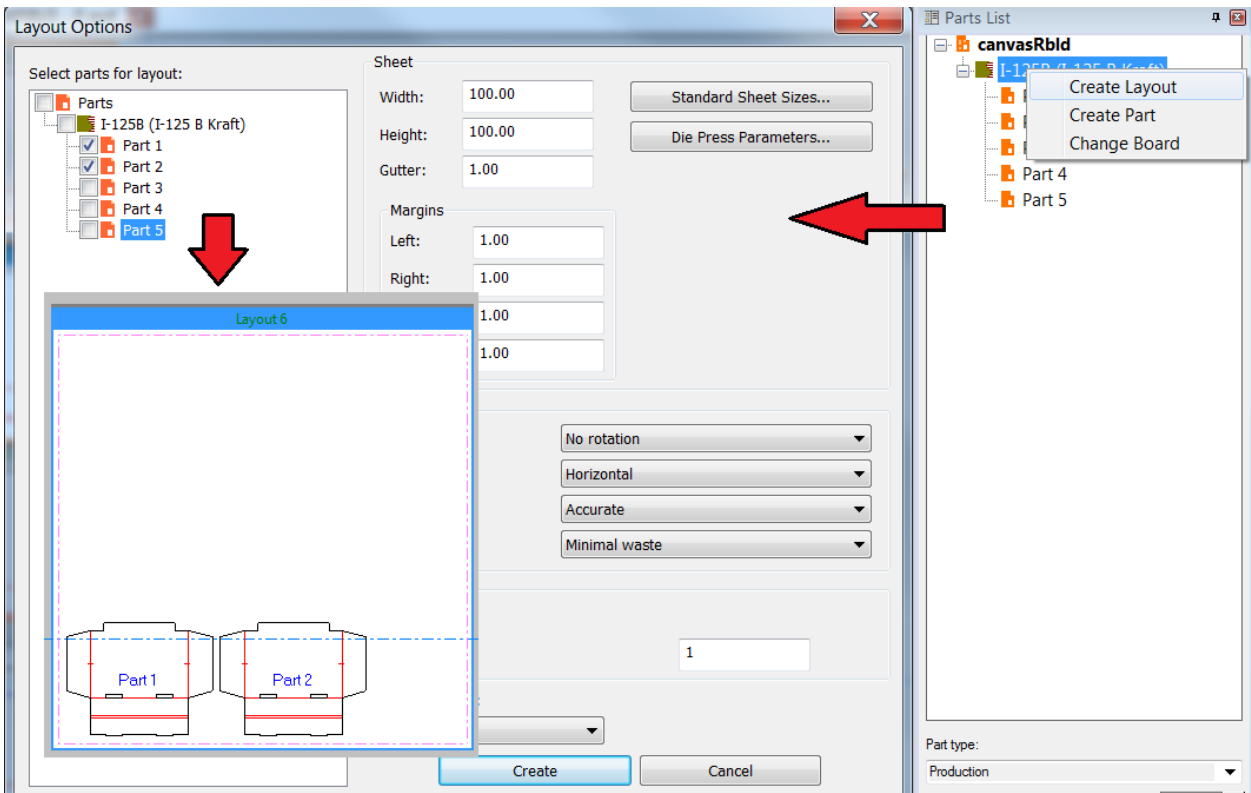
- The layout nesting tool has been extended to include **Honeycomb row and Honeycomb column nesting**.



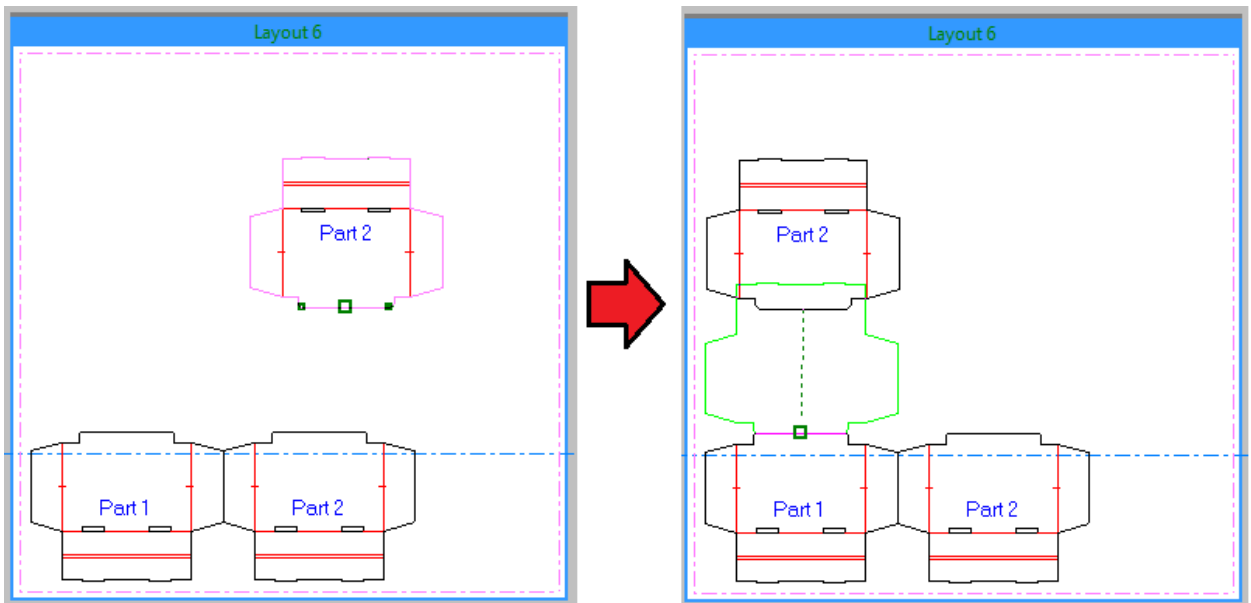
- The layout nesting tool has been improved to **minimize potential overlaps** of labels or protruding ends



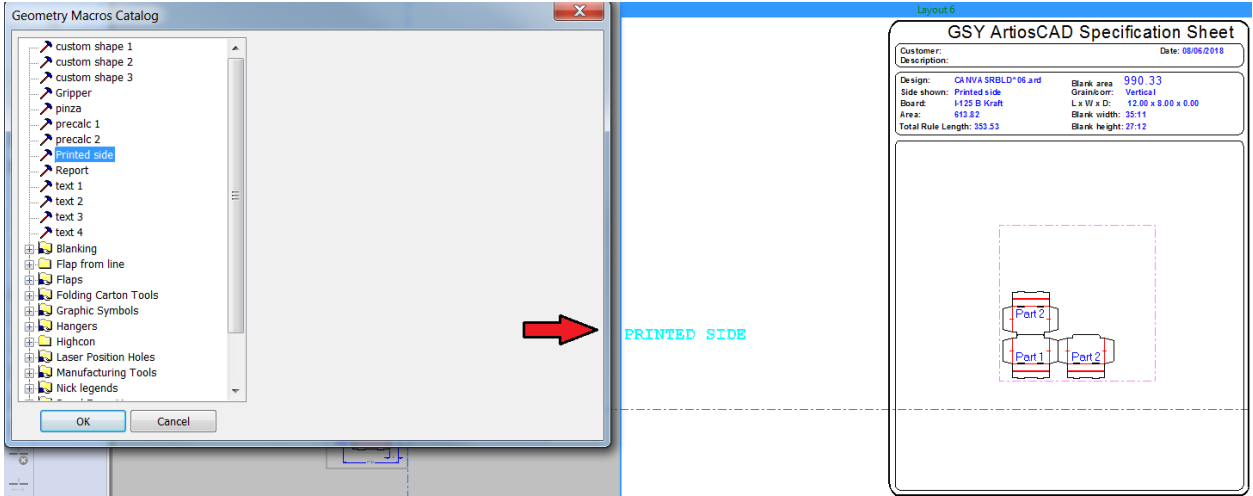
- The [canvas \(.ACD\) layout](#) has been extended to serve as an estimating and production communication asset.
 - A [subset of parts for a given material can be selected](#) for a canvas layout. For example, the material will have a different print production characteristic like a finish or number of colors.



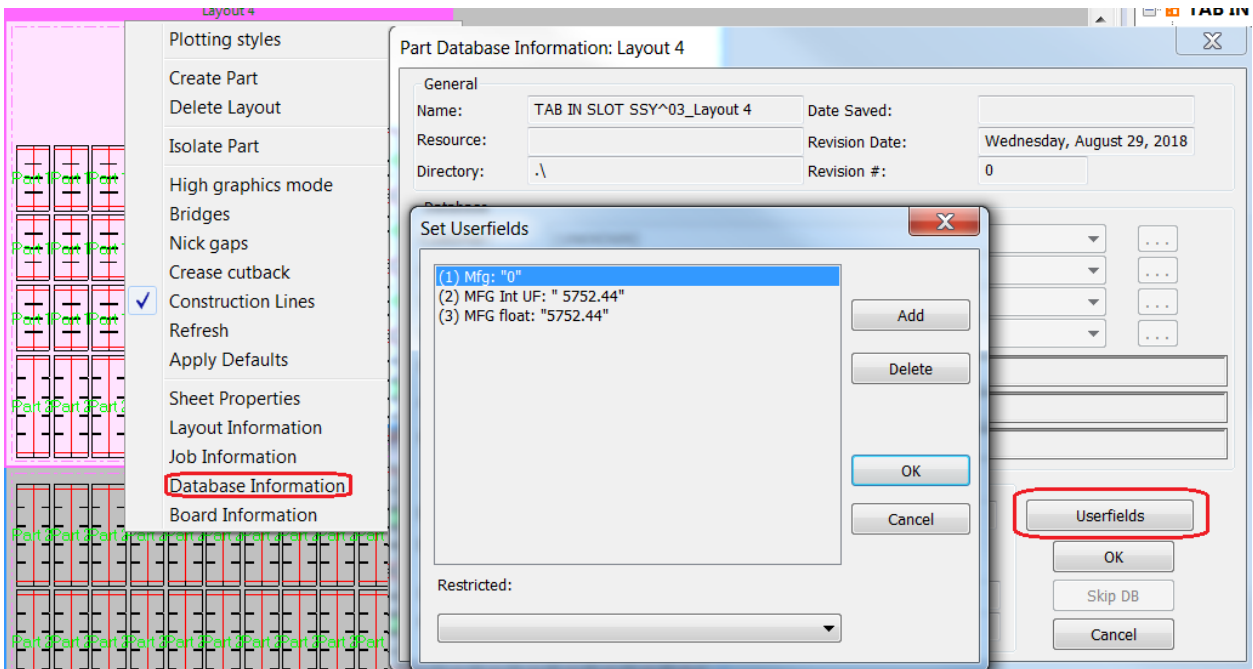
- Parts can be better moved around on a layout with snap points using the full move tool



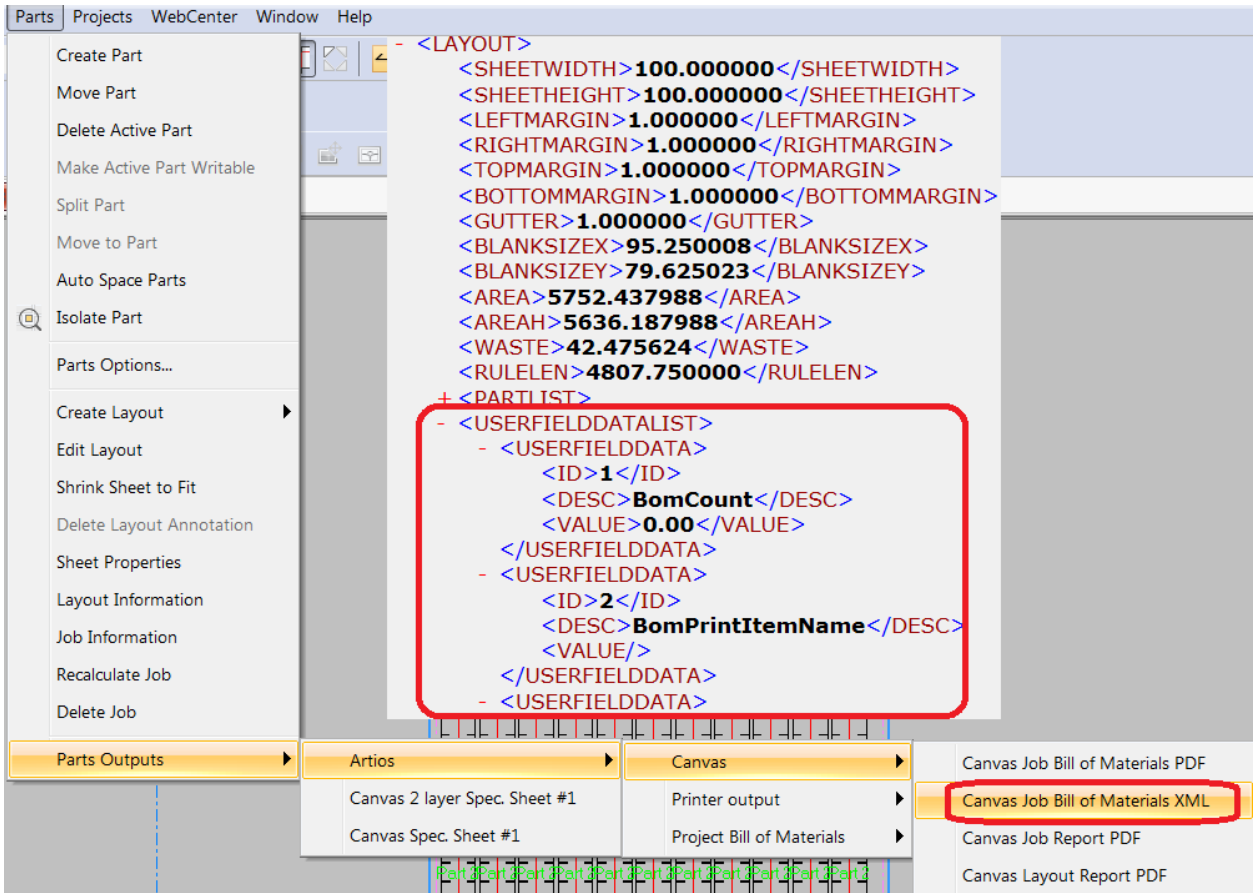
- Reports, including those with prompted text, and geometry macros can be added to the canvas layout as annotations:

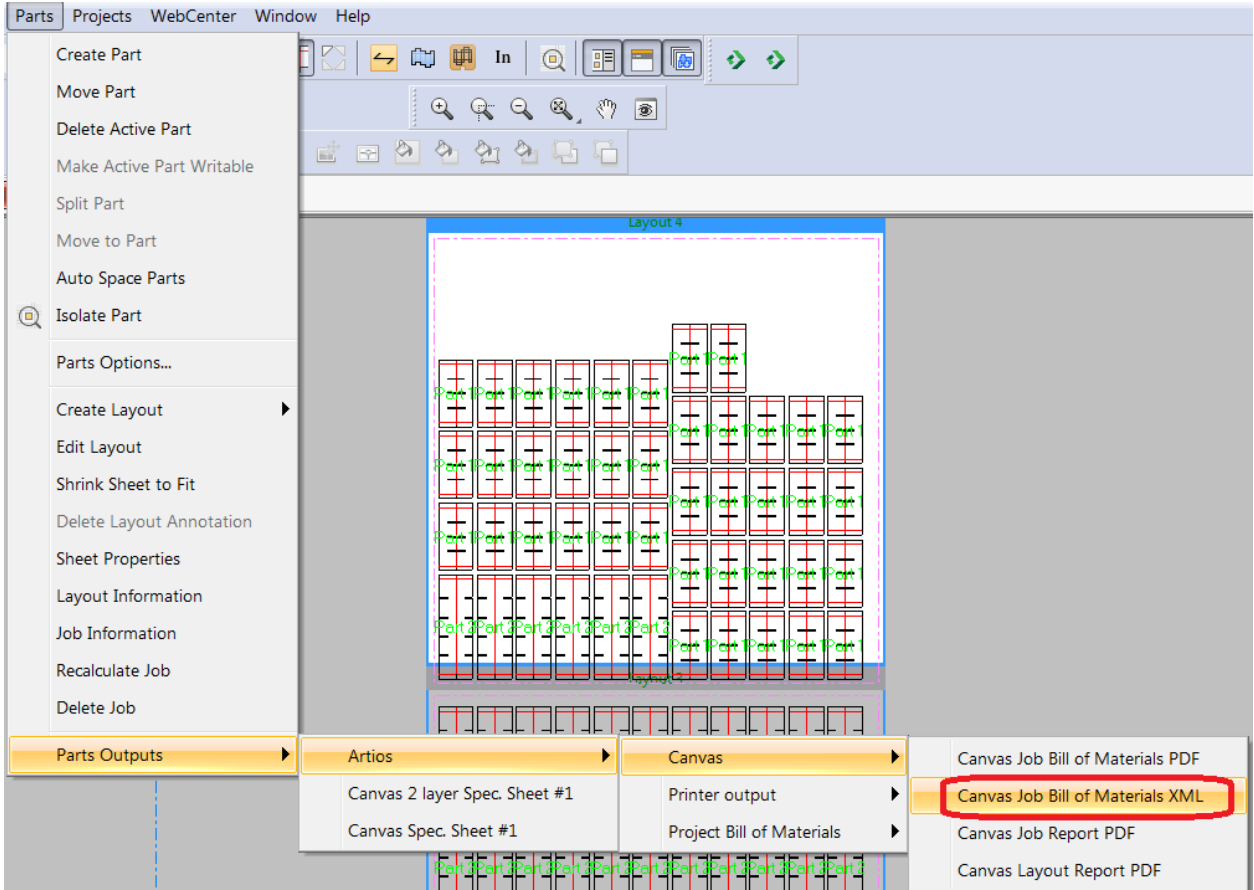


- A canvas layout can utilize database information, including userfields (or Enterprise edition attributes) to allow information to be specified about the canvas layout. Note: the canvas layout is not a managed asset that is saved to the database.

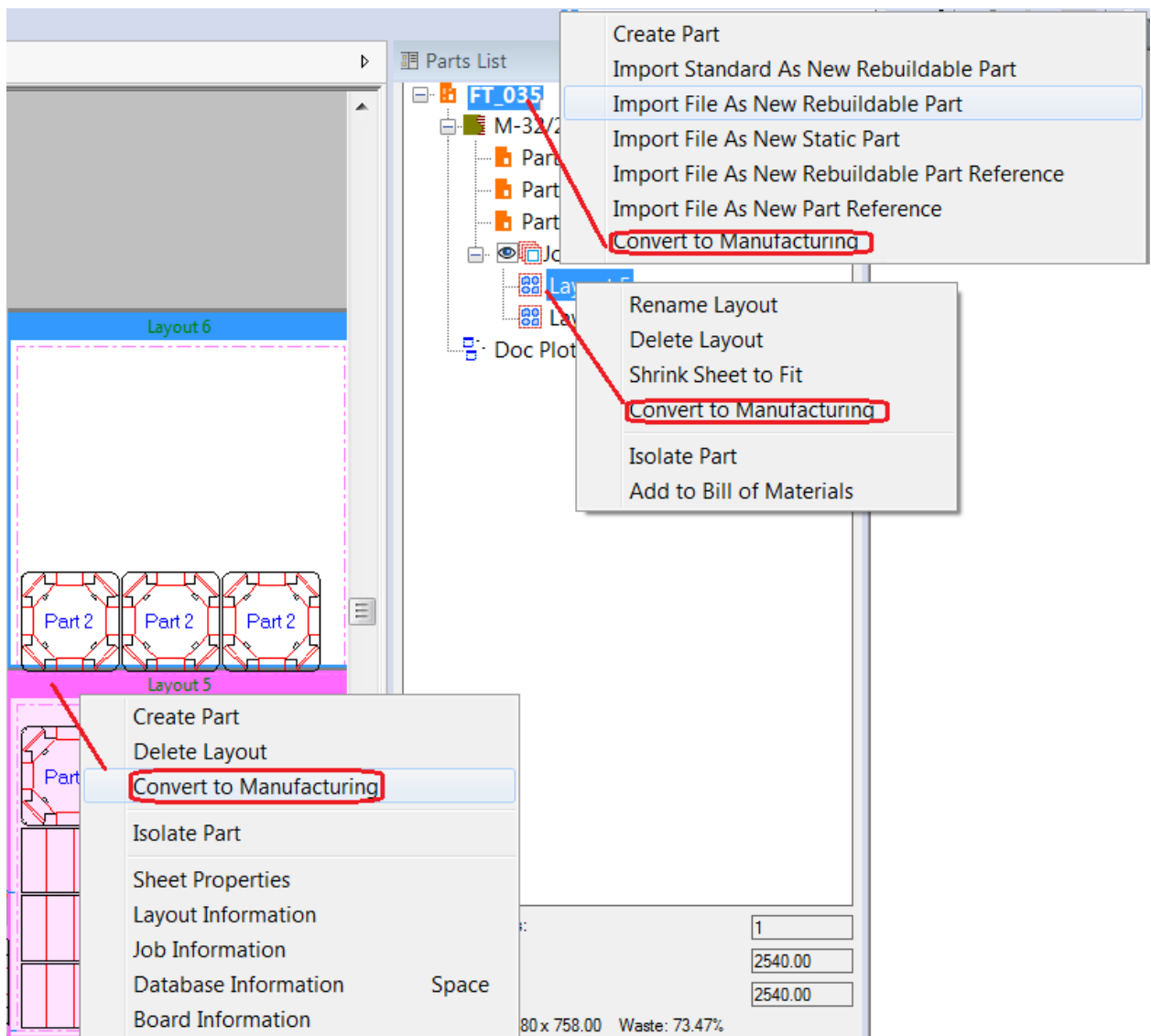


- An XML output of the canvas layout can be generated that will include userfield and prompted text data.



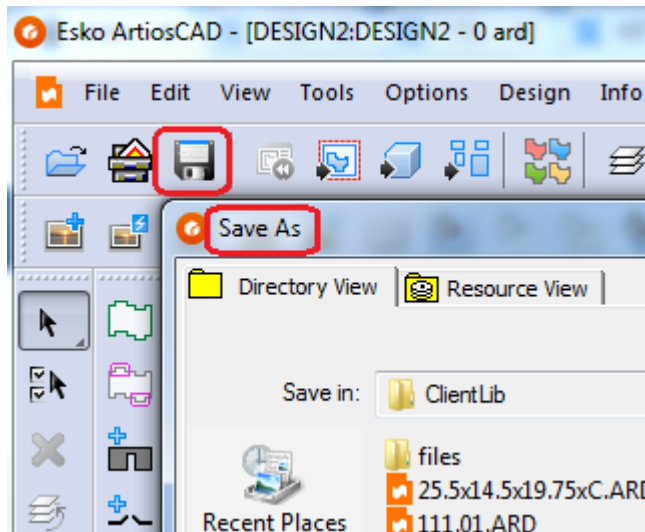


- A user can easily convert a canvas layout to a manufacturing file by right clicking at various points.



Manufacturing Enhancements

- **Save button** acts as Save-As for first save of embedded design opened from MFG



General Enhancements

Infrastructure Enhancements

Integration Enhancements

View Enhancements

Enterprise

- ArtiosCAD Enterprise client and WebCenter [interoperability](#):
 - ArtiosCAD 18.0.1 may be used with WebCenter 18.

Problem fixes:

Customer reported fixes	
ACAD-5330	MFG – Change text color – No preview on the output printer
ACAD-5410	Execute Run New Standard option inside an opened standard can crash ArtiosCAD
ACAD-5505	(Enterprise) Canvas default settings ignored
ACAD-5619	Nicking format changing when bridges are added
ACAD-5622	ArtiosCAD 16.1 Shortcut falsch belegt
ACAD-5623	dubbele lijnen removed and still double lines
ACAD-5802	Rubber – Recalculate All – Area missing rubber
ACAD-5838	Hatch area changes properties
ACAD-5840	Issue with Description and Parts
ACAD-5842	Artios 16.1.1 double knife issue
ACAD-5847	Problem with wave rules – see parent case 00987581

ACAD-5849	Artios 16 – it is not possible to move lines from the MFG to a new one-up layer
ACAD-5851	BUG – Window of BOM dialog on second screen when detaching second screen (enterprise), main and 18 branches
ACAD-5852	Using the “intersect design tool” changes view side (both editions), main and 18 branches
ACAD-5917	Font character broken in ArtiosCAD 18.0
ACAD-5923	Zoom via scroll wheel not working anymore since Version 18 – it works in 16
ACAD-5940	Grouped Output Email/Zip Options
ACAD-5943	(Enterprise) ArtiosCAD Enterprise Issue <>: No login in ArtiosCAD Enterprise with Umlauts and LDAP authentication
ACAD-5969	Stripping Tool – block error in outer edge
ACAD-5971	Cannot strip hole after double knife removal (reported against interference stripping)
ACAD-5972	Crash on CF2 output with report
ACAD-5974	3D windows does not populate when using 2 file windows with the same number
ACAD-6001	Diemakers! Bug in Upperstripping blocks
ACAD-6034	ArtiosCAD 18 – Perf Line Bug
ACAD-6088	Crash canceling distribute to layers
ACAD-6090	(Enterprise) Wenn ins 3D abgesprungen wird, kommt es vor, dass das Material im ARD verloren geht.
ACAD-6100	Macro creates new layer MAIN
ACAD-6102	#NDESIGNSA shows double the value – ArtiosCAD – Needs help creating a report
ACAD-6121	Variable menu can not be deleted
ACAD-6208	Fehlerhafte Darstellung – Entwurfseite Stanzmesserseite, Artios CAD 18.0 Enterprise
ACAD-6251	Cannot input blend of ArtiosCAD rectangle tool
ACAD-6256	(Enterprise) Enterprise CAD 16.1 BUG - ArtiosCAD crash when deleting a default setting following a specific order
	Important internal fixes
ACAD-5405	(Enterprise) Can't D&D move, copy or link a doc to a task which has a specified folder
ACAD-5493	(Enterprise) Incorrect slash correction (backslash vs forward slash) in WC url is not saved
ACAD-5501	(Enterprise) Can't copy data from attributes or other text fields in the database information dialog
ACAD-5612	(Enterprise) Bug in ATC 16.1.1 Browser Settings:
ACAD-5625	(Enterprise) Artios – After saving files menu options are greyed out.
ACAD-5797	Isolation mode shows endpoints for all parts
ACAD-5801	Convert to MFG double line removal creates extra loop
ACAD-5805	ArtiosCAD – Convert to canvas does not update grain image in stage bar
ACAD-5843	ArtiosCAD- parts title bar does not redraw parts count correctly
ACAD-5844	ArtiosCAD – make layout part current in tree does not redraw view correctly
ACAD-5845	Bleed tool – Undo/Redo changes the line type
ACAD-5942	(Enterprise story) Place focus to comment box for enterprise when

	publishing revision
ACAD-5944	Standard edition crashes when saving a new design with one line it
ACAD-6015	eCAD-X browser does not initialize the explorer list
ACAD-6021	(prerelease) Adding attached macro in attach mfg crashes ArtiosCAD
ACAD-6028	(prerelease) Lower stripper not created properly for attached file
ACAD-6031	(prerelease) Crash in rubber all
ACAD-6082	CFF2 and DXF output of coating and counter channels leave small gaps
ACAD-6083	Balance knives tool sometimes adds “ghost” copies of designs
ACAD-6087	(prerelease) When switching units for importing rebuildable ARDs into the canvas, do not convert BUNITS
ACAD-6146	Korean text input starts working backwards after using a space
ACAD-6173	Right click on layout part allows Add to Bom, does not work
ACAD-6178	ACD file with print items and layers in parts does not save them properly to the part ARDs.
ACAD-6527	(Spun off from ACAD-6248)Samplemaking misses some nicks on wave rules

Important Notes for All Users

- **PCIQ fonts** will be removed after ArtiosCAD 18.0.1. Please use true-type fonts.
- The **Artios** (introduced circa 1996 as a transition to ArtiosCAD) and **DBH** (the original interact format) file formats and use of the **devtab** as a configuration file for communicating with printers and ports are considered **obsolete** and support for them will be removed in post 18 versions of ArtiosCAD.
- **Exports** under File > Export > ArtiosCAD 3.2x and lower will be removed in post 18 versions of ArtiosCAD.
- Esko now provides a **knowledge base** at <http://help.esko.com/knowledgebase>. This site can be used to find detailed information for ArtiosCAD and other Esko products about many support questions raised to Esko.
- **Flexnet** is the only licensing system utilized in ArtiosCAD. Users must be prepared to convert the licensing from the hardware key, Sentinel LM or Elan LM to Flexnet. As of Jan 2016, Esko will no longer be able to provide licenses for legacy licensing systems.
- **If the deployed licensing for ArtiosCAD is a network license, the license server *must* be updated with the new system controller provided on the installation media.**
- **Esko software** can be downloaded from <https://mysoftware.esko.com> with a valid support account.
- **User documentation** and help will be available from an online Esko site. Documentation will not be available from the media. The main site is <http://help.esko.com> from which ArtiosCAD and other Esko product documentation is available. The ArtiosCAD help menu will bring the user to the ArtiosCAD help page.
- The most **current Adobe®Illustrator® Esko plugins** can be found at <http://www.esko.com>. Navigate as described below.

ESKO English

Products Solutions Downloads Company **Support** Store Contact

Downloads And Licenses

Support Overview Product Documentation **Downloads & Licenses** Training Contact Esko Support Solution Services

My Software and Hotfixes
Visit My Software and download the products and licenses that you purchased from Esko, find the hotfix that fixes your issue, or subscribe to our product release notification e-mails.
[Find out more...](#)

Trial Software
Download fully functional trial versions for some of our most popular products.
[Find out more...](#)

Free Software
Download a range of free plug-ins, add-ons and tools that make your life easier.
[Find out more...](#)

Mobile Apps
We have iOS apps for WebCenter and Studio, and even an Augmented Reality Tracker!
[Find out more...](#)

Learn more about Esko licensing, perform offline activation, and return the dongles for your older software.
[Find out more...](#)

Free downloads

- Plugins for Adobe® Illustrator®
- Plugins for Coreldraw®
- Demos
- Plugins for Adobe® Photoshop®
- Tools
- Extensions
- Plugins for Adobe® Acrobat®
- Viewers

Plugins for Adobe® Illustrator®

Esko Data Exchange 14 (CS6 and CC)

Data Exchange Plug-in is a free and simple to use plug-in for Adobe® Illustrator® that acts as a bridge between Adobe® Illustrator®, and the Esko applications Automation Engine, PackEdge, Plato and ArtPro and between Adobe® Illustrator® and ArtiosCAD.

Esko Data Exchange 14 (CS6 and CC)

Data Exchange Plug-in is a free and simple to use plug-in for Adobe® Illustrator® that acts as a bridge between Adobe® Illustrator®, and the Esko applications Automation Engine, PackEdge, Plato and ArtPro and between Adobe® Illustrator® and ArtiosCAD.

ai-cut 14 (CS6 and CC)

Automate the process of adding i-cut registration marks to your jobs.

ai-cut 14 (CS6 and CC)

Automate the process of adding i-cut registration marks to your jobs.

WebCenter Connector 14 (CS6 & CC)

The WebCenter Connector opens native ArtiosCAD single designs, and Studio (Collada) files, stored in WebCenter and ArtiosCAD Enterprise within Adobe Illustrator. It also exports normalized PDF files back to WebCenter.

WebCenter Connector 14 (CS6 & CC)

The WebCenter Connector opens native ArtiosCAD single designs, and Studio (Collada) files, stored in WebCenter and ArtiosCAD Enterprise within Adobe Illustrator. It also exports normalized PDF files back to WebCenter.

Download

- Go to Download Center (secure link)
- Artwork Systems software

Stay up to date

Receive information about Esko, upcoming events, products and website news by subscribing to the "[More! e-zine](#)".

- **Windows 10 editions** has been certified for use with ArtiosCAD 18.0.1 as a standard mouse-controlled application. There are some installation limitations. See <https://wiki.esko.com/display/KBA/KB174658159%3A+ArtiosCAD+-+Install+Standard+Edition+with+Database+on+Windows+10>
- **Windows 8, 8.1 and Windows Server 2012** have been certified for use with ArtiosCAD 16. 1 as a standard mouse-controlled application. There are Metro GUI limitations:
 - The application folder structure organized in previous versions of windows 8 has been flattened. There will be multiple application tiles.
 - There is no support for touchpads nor touchscreens and any use of gestures is purely coincidental.
- **Windows 7** has been certified for use with ArtiosCAD 18.01.1 with notes.
 - The use of AeroPeek seems to confuse USB mice and will unexpectedly move the pointer to unintended locations.
 - Avoid use of the Windows 7 *magnify* tool.
- The **IOServer** (ArtiosIO) is now supported on Windows 7 and higher since Artioscad 14. 1. This means older DataTech plotters still using the IPC controller or any device with an RS232 connection will be supported

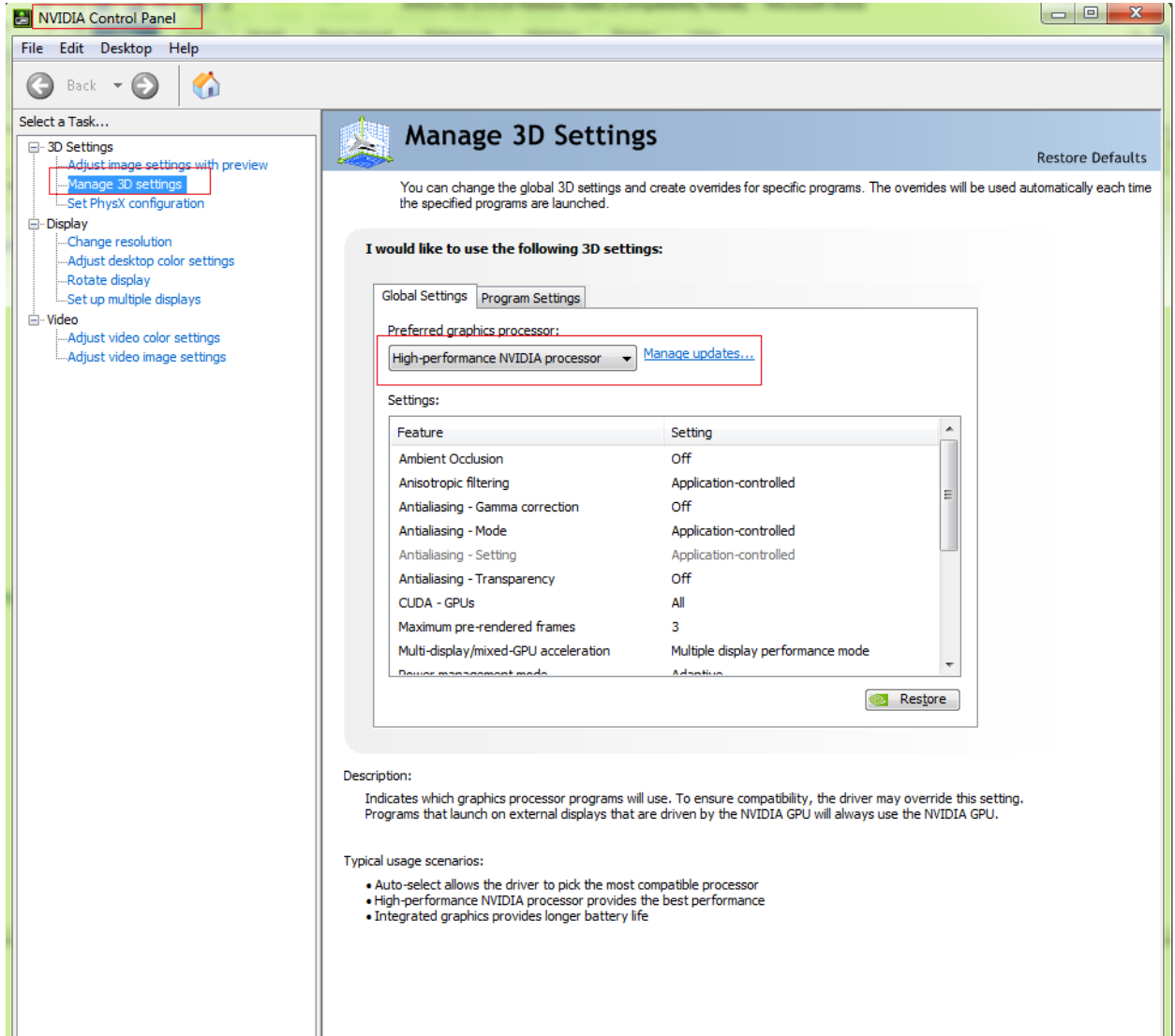
- Many users have or are planning to deploy [Citrix, Terminal Services \(TS\) environments or some other application hosting system](#). Esko has *not* officially certified ArtiosCAD for use in a Citrix or TS environment, however, Esko does not prevent its use as long as the customer accepts responsibility for deployment and support of the environment.

Esko has verified that ArtiosCAD 18.0.1 can run as a Citrix or Terminal Services client and has licensed ArtiosCAD 18.0.1 appropriately, however, there are some limitations, *including but not limited to*:

- Flexnet network licensing must be used.
 - License reservation or denial via floating license servers is not supported.
 - Graphics cards are installed on a Citrix or TS server and ArtiosCAD 3D uses the server card for 3D rendering. The performance of many concurrent 3D users is unknown.
 - The exact server specifications (example, memory, processor) for a given set of clients is unknown.
 - There are essentially no user defaults, since every Citrix or TS client is running from the same Citrix server.
 - There have been reports that access to local devices like hard drives or printers can freeze the machine. It is unknown if these issues have been addressed in newer versions of Citrix.
 - The HASP key used for the Alma PowerNest software in the ArtiosCAD rubbering layout can not be recognized by Citrix or TS and must be used on a client not connected to the Citrix server.
 - 64-bit Citrix has not been tested in any way.
- Many users are planning to deploy [VMWare ESX-based solutions, Hyper V \(Windows Server Virtualization\), Citrix XenServer or other hypervisor technology](#). Esko has *not* officially certified ArtiosCAD for use in this environment, however, Esko does not prevent its use as long as the customer accepts responsibility for deployment and support of the environment.
 - Artioscad 18.0.1 has been certified for [VMware Fusion v7](#). The customer may run later versions of his own accord on hardware and OS of his choosing, but Esko provides no warranty of the resulting combination. The preferred 3D rendering mode is OpenGL but use Direct3D in the event of unforeseen issues. Virtualized 3D rendering will not provide the same performance as native hardware.
 - For native windows applications, [the 3D Rendering Option](#) is recommended to be set to OpenGL for full 3D functionality. Use of OpenGL for Bitmaps should also be enabled.
 - [3D graphics cards...](#) newer computers often come with some form of switchable graphics technology. This means that there are two or more video cards that switch off doing rendering duties on the system. Because of this, it is entirely possible that

ArtiosCAD will be run using the low end, power saving chip. This drastically lowers performance, and may introduce issues when working within ArtiosCAD 3D. It is sometimes also possible that the current chip changes, which can lead to all sorts of stability issues. It is recommended that the user go to the control panel controlling the graphics cards (NVidia Control Panel or AMD Catalyst Control Center) and create a profile for ArtiosCAD so it will use the high end chip always.

This is an example and is for windows 7.



A number of rendering issues with NVidia cards and OpenGL have been raised. Changes were made to what is believed to be an improvement in the error handling of newer NVidia cards particularly those with dual graphic cards.

- Since its inception, Artioscad has provided a **database schema** that has always been backwards compatible with previous versions of Artioscad and 3rd party applications. An ArtiosCAD enterprise edition has now been released and utilizes a new database backend (WebCenter). It is expected that the database functionality for the conventional ArtiosCAD edition will be frozen at its current level. New design

functionality will continue to be added. It is expected that a single database edition will be created in the future.

- Automatic fold-up of an ARD to populate a 3D file window of the same number only works for U3D when the design file window and the 3D file window are both numbered one, and there are no other 3D file windows.