

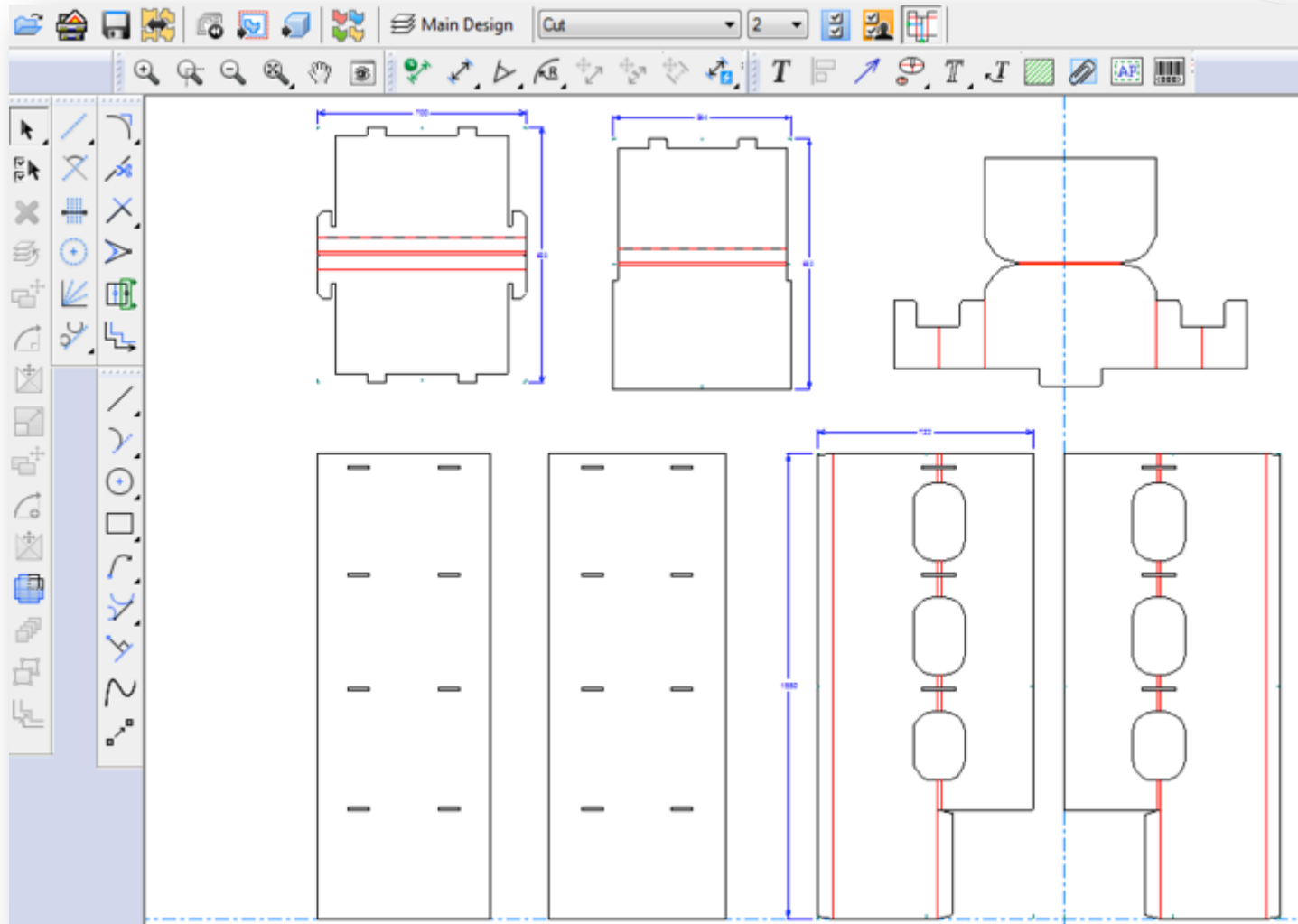
ArtiosCAD 14.1.1

What's New?

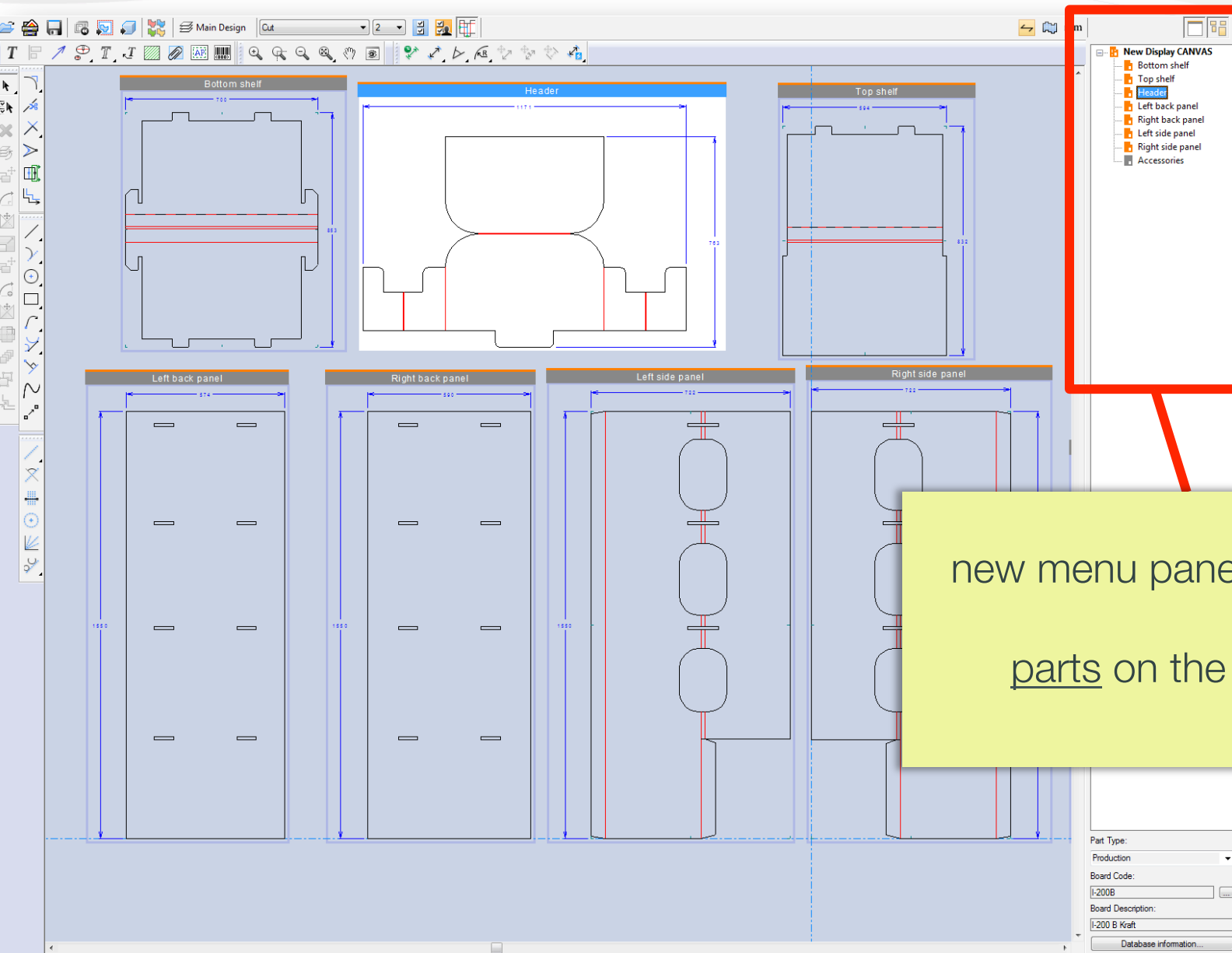


Faster workflow for display and multi-part packaging projects

Challenge – Designing multiple parts in a single workspace

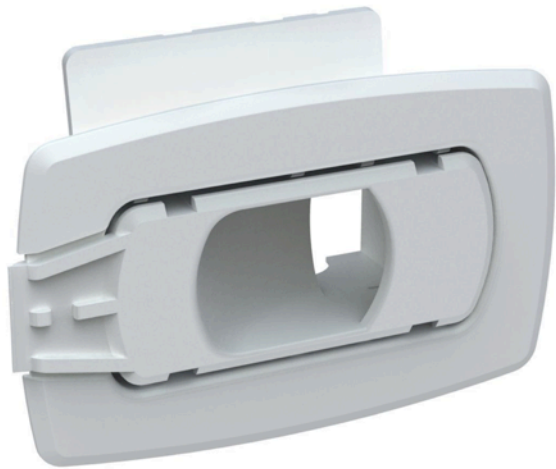


Solution – Single Design Canvas with Parts List

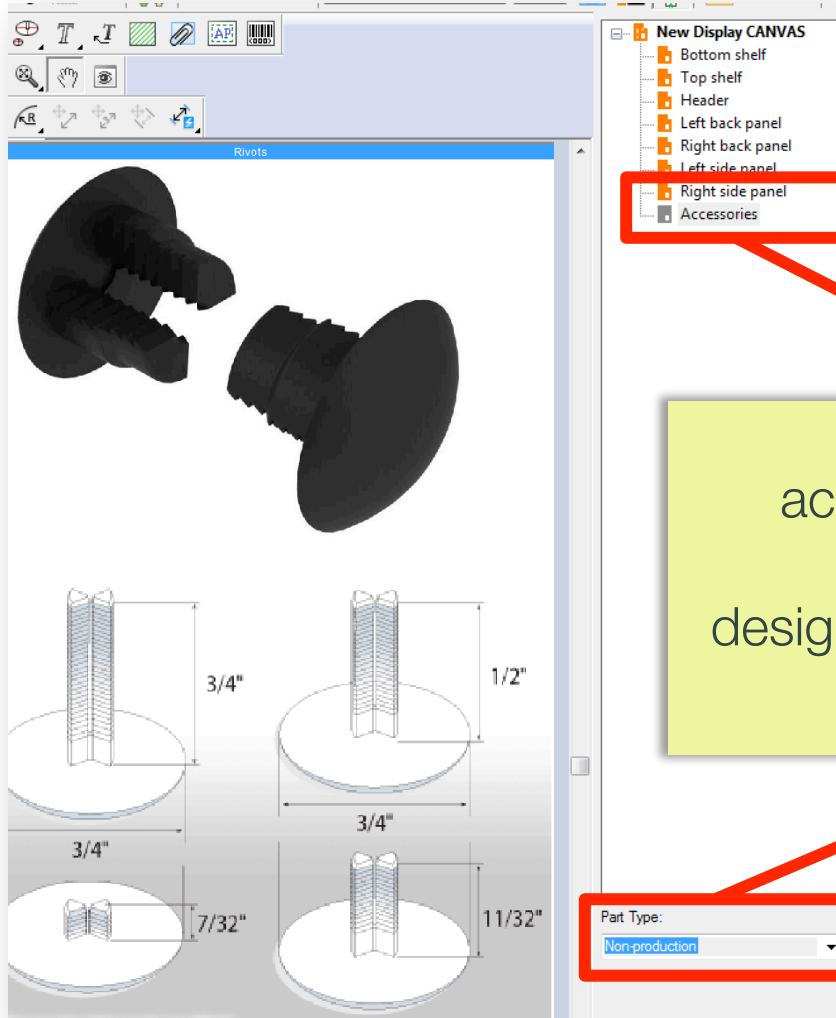


new menu panel to define
parts on the canvas

Challenge – How to include accessory parts?

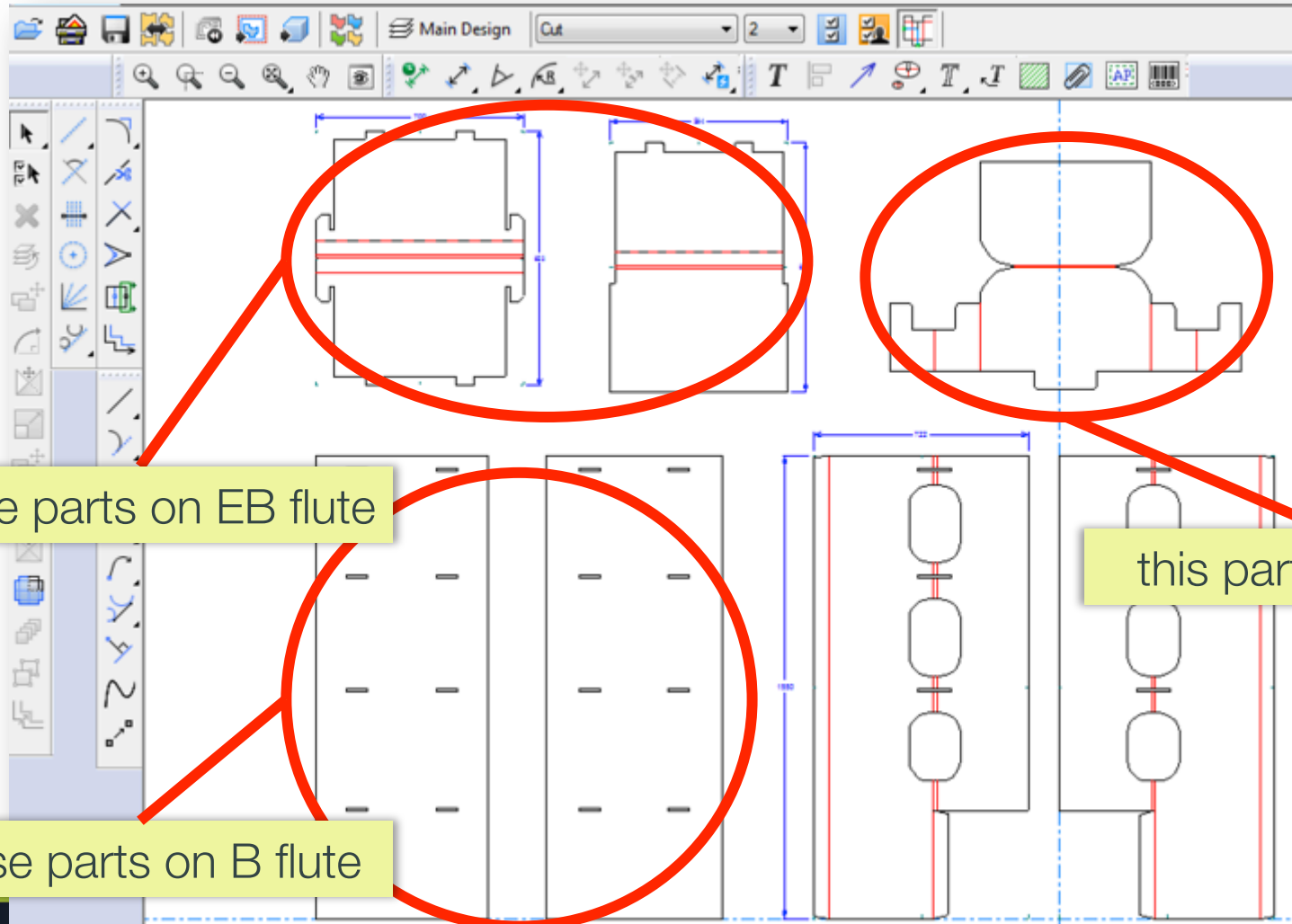


Solution – Include Non-Production Parts on the Canvas



accessory parts can be designated as non-production

Challenge – Parts Produced on Multiple Substrates

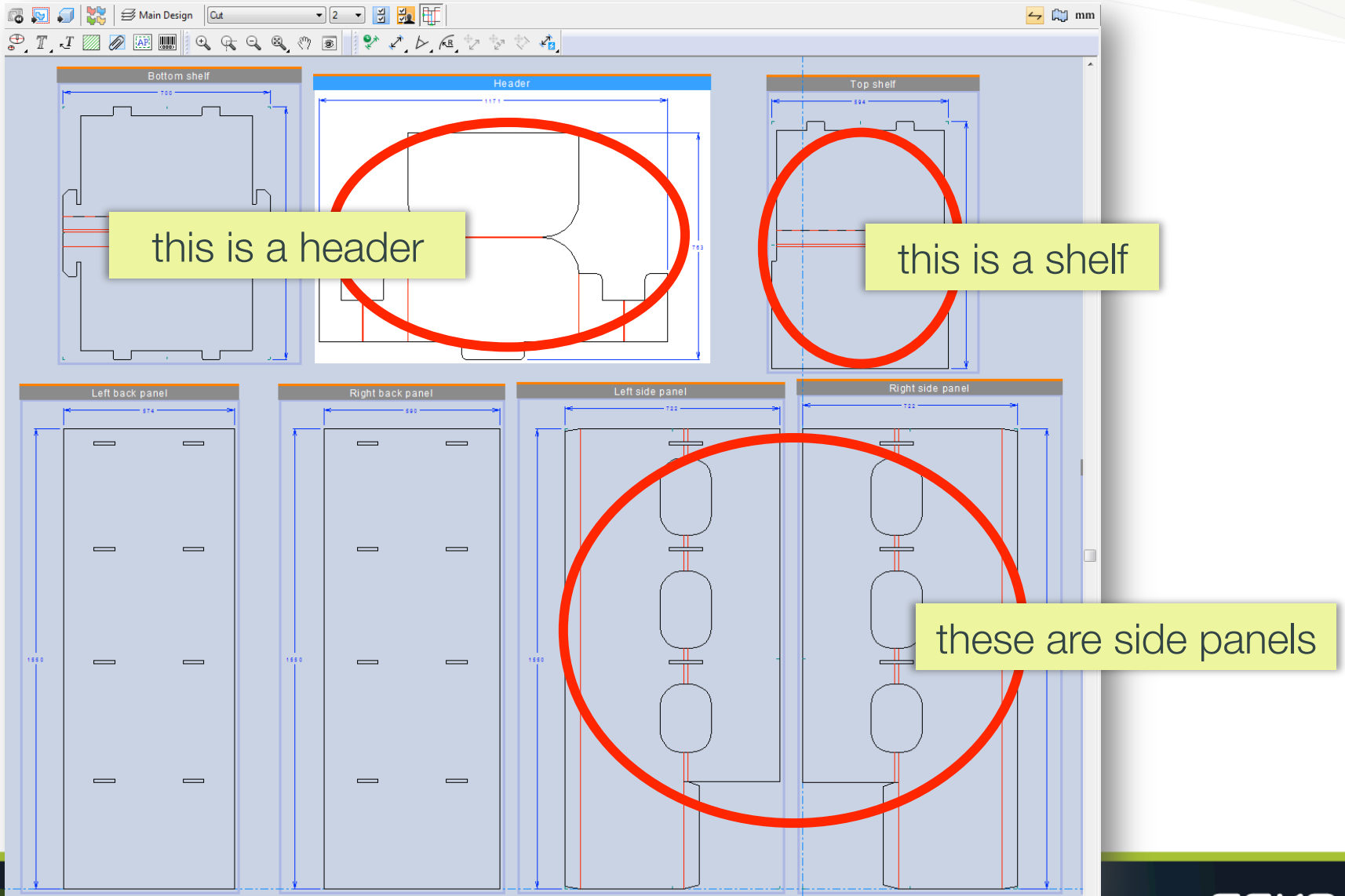


The Solution – Each Part Can Have Unique Settings

Parts

Part	Document	Project	Version	Board
Base	10010-Base-01.ARD	RIDR-090815	3	200 B
Footer	10010-Footer-02.ARD	RIDR-090815	3	200 B
Header	10010-Header-03.ARD	RIDR-090815	3	Display board 2.5mm
Shelf1	10010-Shelf1-04.ARD	RIDR-090815	3	EB flute
Shelf2	10010-Shelf2-05.ARD	RIDR-090815	3	EB flute
Rivots	10010-Canvas^07.ard		0	EB flute

Problem – Parts Need Different Information



Solution – Each Part Can Have Unique Database Info

The image displays a CAD layout of a display unit with four main components: a 'Header' at the top, a 'Top shelf' below it, a 'Right back panel' on the left, and a 'Left side panel' on the right. Dimensions are provided for each: Header (763), Top shelf (594), Right back panel (590), and Left side panel (722).

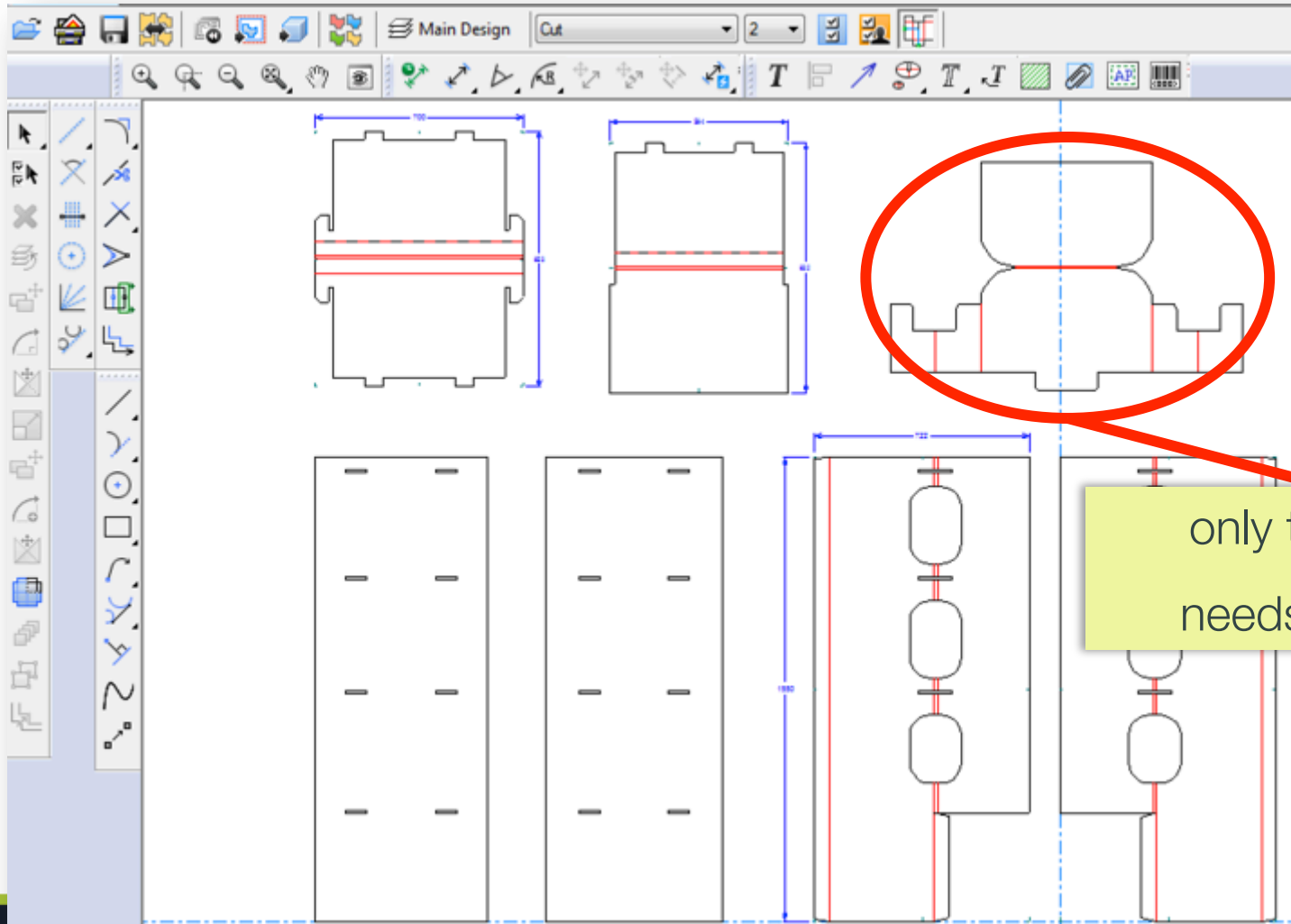
The 'Part Database Information: Header' dialog box is open, showing the following data:

General	
Name:	NEW DISPLAY CANVAS^03
Resource:	
Directory:	C:\Users\yidr\Desktop\Display Demo\
Date Saved:	Friday, August 14, 2015
Revision Date:	Saturday, June 13, 2015
Revision #:	0

Database	
Customer:	B+B International S.r.l., Montebelluna
Owner:	B+B International S.r.l., Montebelluna
Salesperson:	Veronesi, Alan
Designer:	Favotto, Luca
Description:	Header for display unit
Short Description 1:	Header needs artwork
Short Description 2:	
Short Description 3:	
Authorization:	
Rev. Description:	

Design	
Length (L):	0.00
Width (W):	0.00
Depth (D):	0.00
Area:	514568.94
Rule Length:	6140.48
Blank Width:	1171.00
Blank Height:	763.00
Board Info:	I-200B
Grain:	Horizontal
Characteristics:	

Challenge – Workflow with Graphic Design

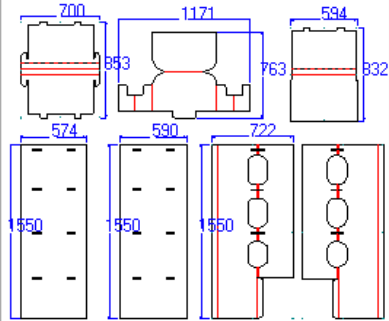


only this part
needs artwork

Save Each Part to ArtiosCAD Design File (ARD)

Save Parts

<input checked="" type="checkbox"/>	Part Name	Filename	Revision	Location	Database Information	Save	Status
<input checked="" type="checkbox"/>	Bottom shelf	PART-001007.ARD	0	@ArtiosCAD <C:\Esko\Artios\Designs>	...	Create New Document	
<input checked="" type="checkbox"/>	Top shelf	PART-001008.ARD	0	@ArtiosCAD <C:\Esko\Artios\Designs>	...	Create New Document	
<input checked="" type="checkbox"/>	Header	PART-001009.ARD	0	@ArtiosCAD <C:\Esko\Artios\Designs>	...	Create New Document	
<input checked="" type="checkbox"/>	Left back panel	PART-001010.ARD	0	@ArtiosCAD <C:\Esko\Artios\Designs>	...	Create New Document	
<input checked="" type="checkbox"/>	Right back panel	PART-001011.ARD	0	@ArtiosCAD <C:\Esko\Artios\Designs>	...	Create New Document	
<input checked="" type="checkbox"/>	Left side panel	PART-001012.ARD	0	@ArtiosCAD <C:\Esko\Artios\Designs>	...	Create New Document	
<input checked="" type="checkbox"/>	Right side panel	PART-001013.ARD	0	@ArtiosCAD <C:\Esko\Artios\Designs>	...	Create New Document	
<input type="checkbox"/>	Accessories	NEW DISPLAY CANVAS 08.ARD	0	C:\Users\jdr\Desktop\Display Demo	...	Create New Document	



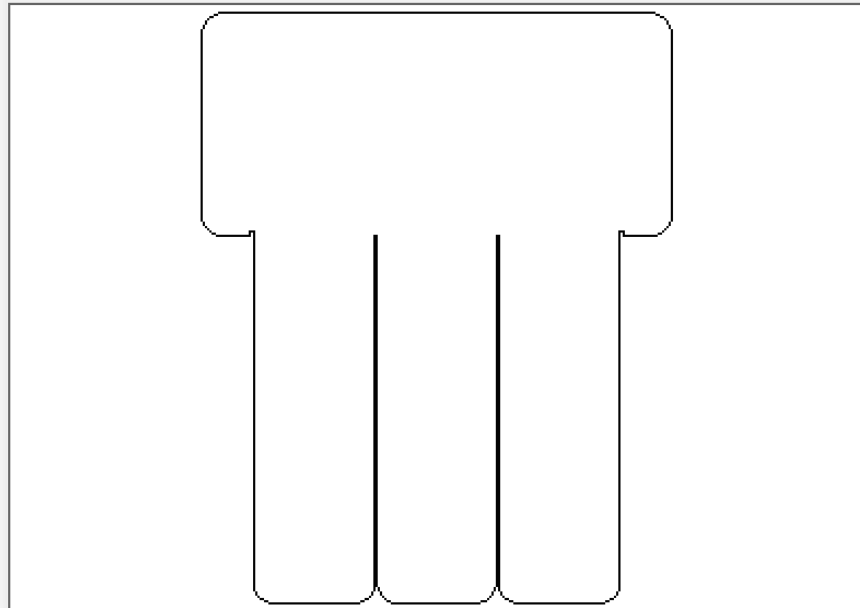
Technical drawing showing dimensions for a display assembly. The drawing includes a top view and a side view. Dimensions are provided in millimeters (mm):

- Top view dimensions: 700 (width), 1171 (width), 594 (width), 883 (height), 763 (height), 832 (height).
- Side view dimensions: 574 (width), 590 (width), 722 (width), 1550 (height).

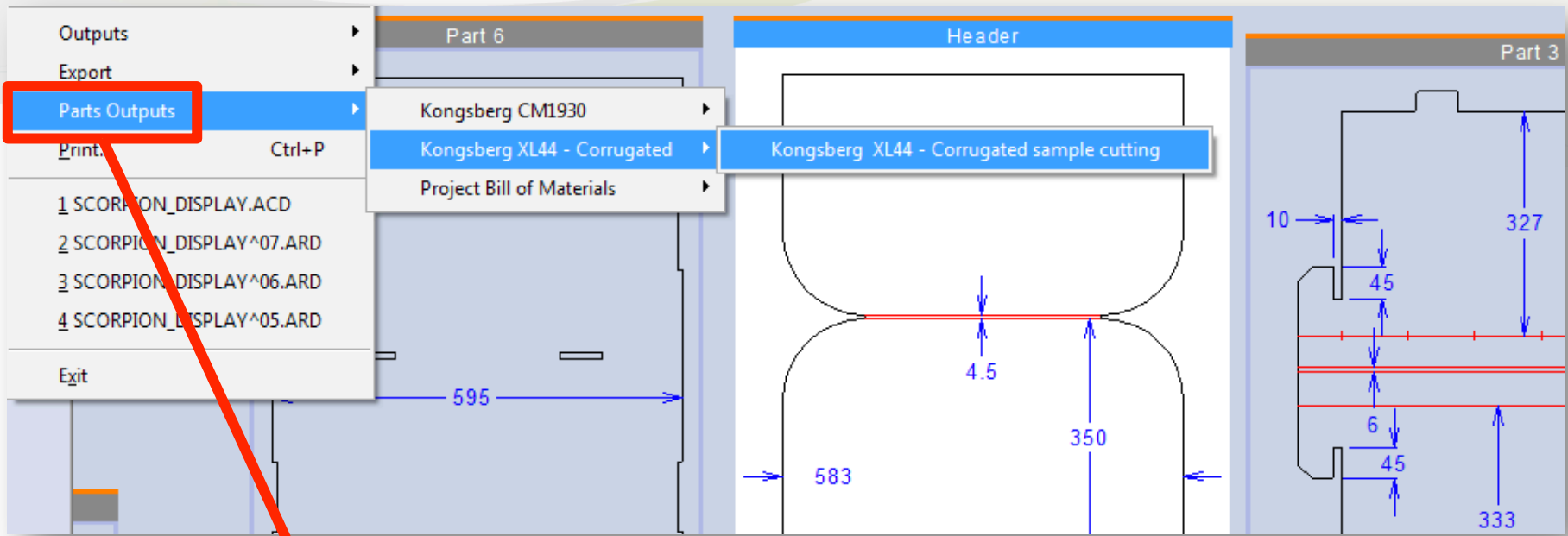
Buttons: Save, Close

Name	Description	Project Name	Modified Date
10010-Footer-02.ARD	Footer used in other displays too	RIDR-090815	9/8/2015
10010-Header-03.ARD	Header needing graphics	RIDR-090815	9/8/2015
10010-Shelf1-04.ARD	Shelf #1	RIDR-090815	9/8/2015
10010-Shelf2-05.ARD	Shelf #2	RIDR-090815	9/8/2015

just send this ARD
for artwork creation

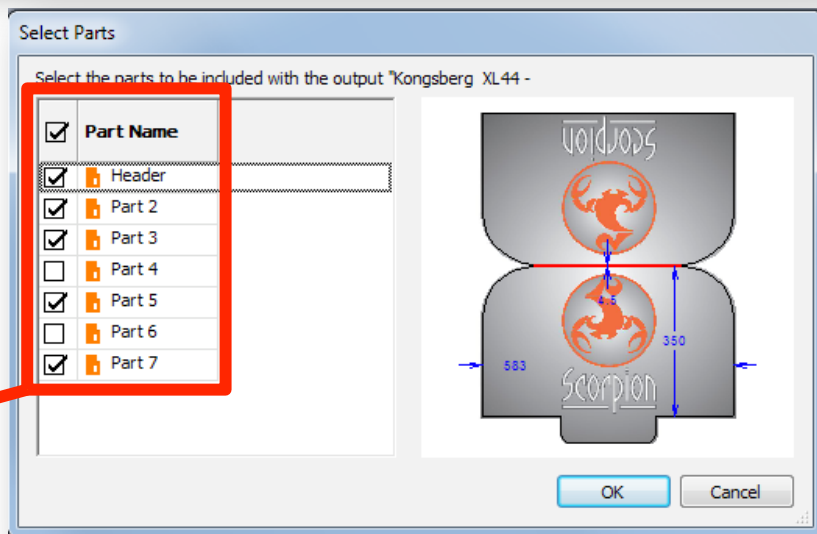


General	Board	Characteristics	Attributes	Geometry	Print Items
Document name:	10010-Header-03.ARD				
Description:	Header needing graphics				
Version number:	3				
Revision:	0				
Comment:	new boards				
File size:	6.1 KB				



run outputs on canvas parts

select the parts included in the output



Enterprise Only

Search for Documents

Fill in one or more fields. Prefer less fields? Try [Keyword Search](#).

Search for:

ArtiosCAD Canvas

- Use Advanced Search Characters
- Search Panel Design
- Enable SmartNames

Design Name:

Version Author: Me User

Author's Location:

Description:

Modified:

Attributes...:

Approval Status:

Characteristics...:

CANVAS INFORMATION

Length: = +/- in.

Width: = +/- in.

Depth: = +/- in.

Board Name:

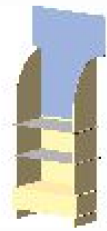
Part Name: common base

search Canvas documents in WebCenter (specify part name)

Enterprise Only

Document: 10010-Canvas.ACD

- Mail link to
- Open in ArtiosCAD
- View and Annotate
- More actions...
- Download



Document
Version
Description: Product display for Small Brand Guy
Project: [RIDR-090815](#)
Approval: No Approval Required

new parts tab in WebCenter shows list of parts in the Canvas

Canvas Information | Document Information | Approval | Action History | Annotations | Projects | Attributes | Characteristics | Discussions (0)

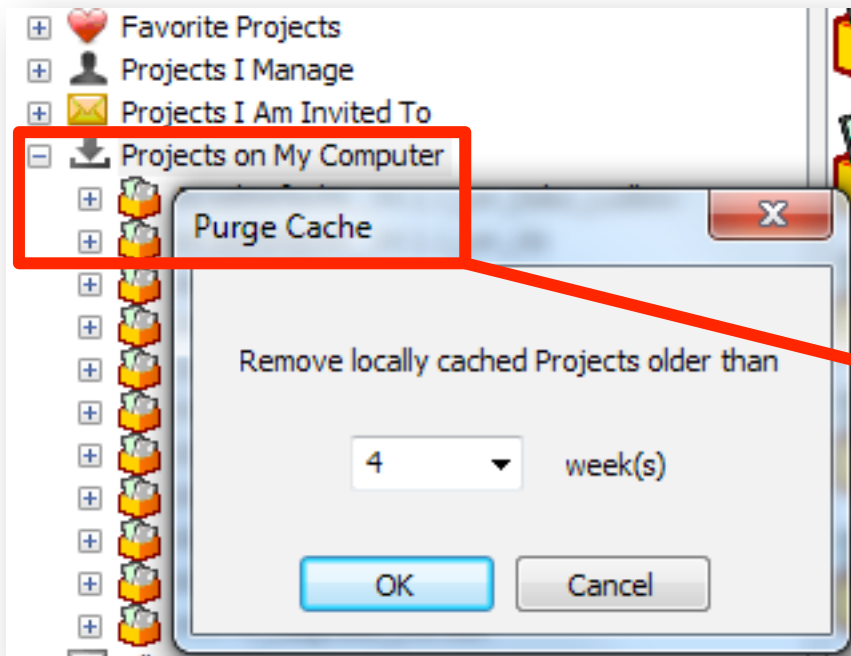
Geometry | General | **Parts** | 2D View

Parts

Part	Document	Project	Version	Board	Board Description
Base	10010-Base-01.ARD	RIDR-090815	3	200 B	200 B
Footer	10010-Footer-02.ARD	RIDR-090815	3	200 B	200 B
Header	10010-Header-03.ARD	RIDR-090815	3	Display board 2.5mm	Display board 2.5mm
Shelf1	10010-Shelf1-04.ARD	RIDR-090815	3	EB flute	EB flute
Shelf2	10010-Shelf2-05.ARD	RIDR-090815	3	EB flute	EB flute
Rivots	10010-Canvas^07.ard		0	EB flute	EB flute

Feature	Advantage	Benefit
Design on a single canvas	See all POP parts in a single view	Eliminate mistakes of missing single part updates
Unique board assignment on each part	Parts with mixed boards can be designed and viewed together	Matches the design and production workflow for POP displays
Unique database information on each part	Easily identify parts using unique descriptions and attributes	Work more efficiently

Additional New Features



purge locally cached projects
based on time

Enterprise
Only

Document Search - Design

Document Name:

Version Author:

Location of the Author:

Project:

Customer/Location:

Description:

Modified:

Revision Options

Letter:

Search For:

Comment:

Attributes...

Characteristics...

Length: +/- in

Width: +/- in

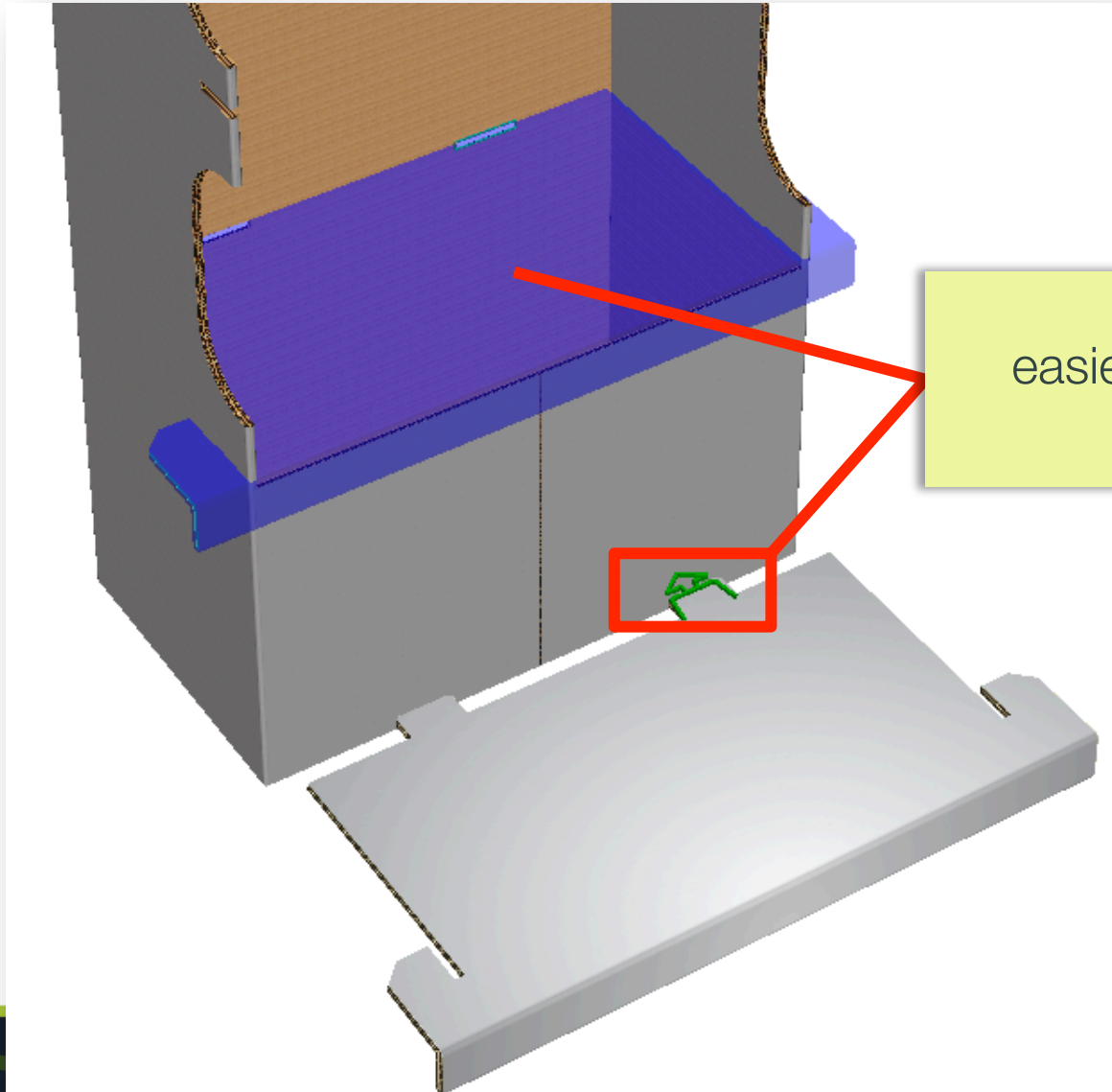
Depth: +/- in

Board Code or Description:

Save As... Clear Run Cancel

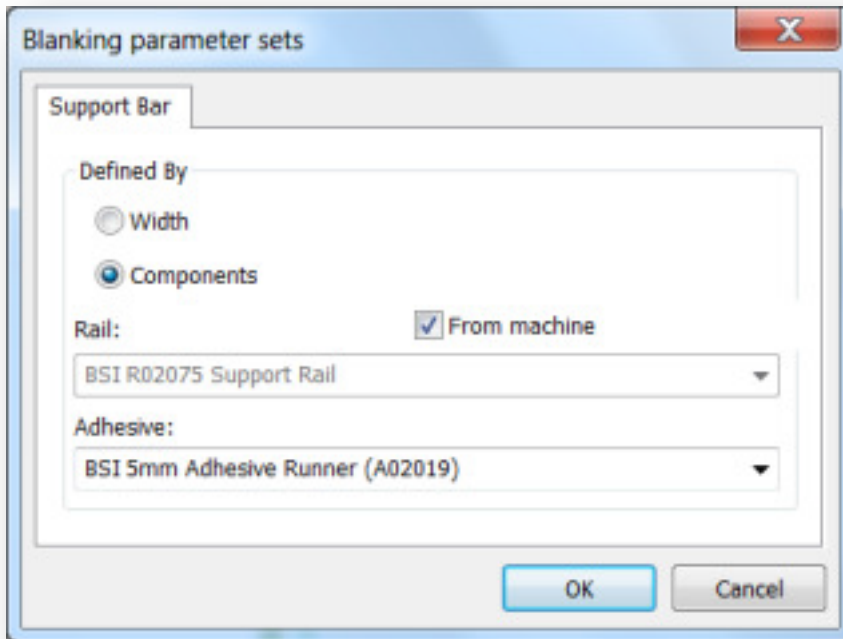
new search by revision option

Additional New Features



easier to use Tab/Slot tool

Additional New Features



BSI Components:

Support bars & adhesive
added for flat top blanking

ESKO*

