

Esko ArtiosCAD 24.07

Release Notes



ArtiosCAD 24.07 Release Notes

Visit ArtiosCAD news...

<https://www.esko.com/lp/artioscad/artioscad-news>

-or-

Start ArtiosCAD. Navigate to Help > ArtiosCAD News

What's new in:

- [Design](#)
- [3D](#)
- [Layout](#)
- [Manufacturing](#)
- [General](#)
- [Infrastructure](#)
- [Integration](#)
- [View](#)
- **[Enterprise](#)**

[Problem fixes](#)

[Important notes for all users](#)

What's new?

Design Enhancements

- [Resizable Design Templates \(RDTs\)](#), aka, standards, for Fefco and ECMA have been updated in the ArtiosCAD style catalog. Updates will be an ongoing endeavor and new styles will be added in future releases.

This is a list of new and modified standards for 24.07:

Added:

4 new ECMA

- ET_A61.20.01.03.A.ARD
- ET_B14.02.00.00.A.ARD
- ET_B15.06.00.53.A.ARD

- ET_B40.22.00.00.A.ARD

14 new FEFCO

- FT_0509.ACD
- FT_0511.ACD
- FT_0512.ACD
- FT_0601.ACD
- FT_0602.ACD
- FT_0605.ACD
- FT_0606.ACD
- FT_0607.ACD
- FT_0608.ACD
- FT_0610.ACD
- FT_0615.ACD
- FT_0616.ACD
- FT_0620.ACD
- FT_0714.ACD

New category Corrugated Boxes

7 new boxes

- CB100.ARD
- CB102.ARD
- CB104.ARD
- CB105.ARD
- CB106.ARD
- CB107.ARD
- CB108.ARD

Modified:

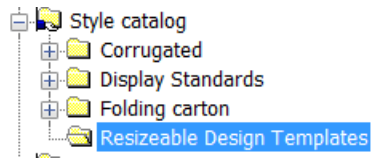
3 ECMA

- ET_A60.20.00.01.ARD
- ET_B11.02.00.00.ARD
- ET_C20.20.60.20.ARD

3 FEFCO

- FT_0217.ARD
- FT_0219.ARD
- FT_0222.ARD

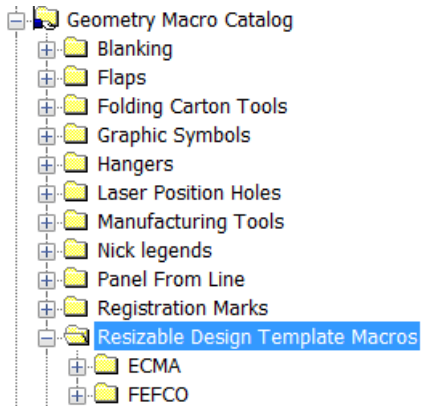
Navigate to Options > Defaults > Style Catalog > Resizeable Design Templates



See <Artios folder>\<version>\Instlib\<library>\Documentation for xls files that describe how the RDT was constructed.

Example: C:\Esko\Artios\ArtiosCAD20.0\InstLib\ECMA\Documentation\ET_A20.20.01.01_.xlsx

Geometry macros which were used to construct the RDTs have also been added.



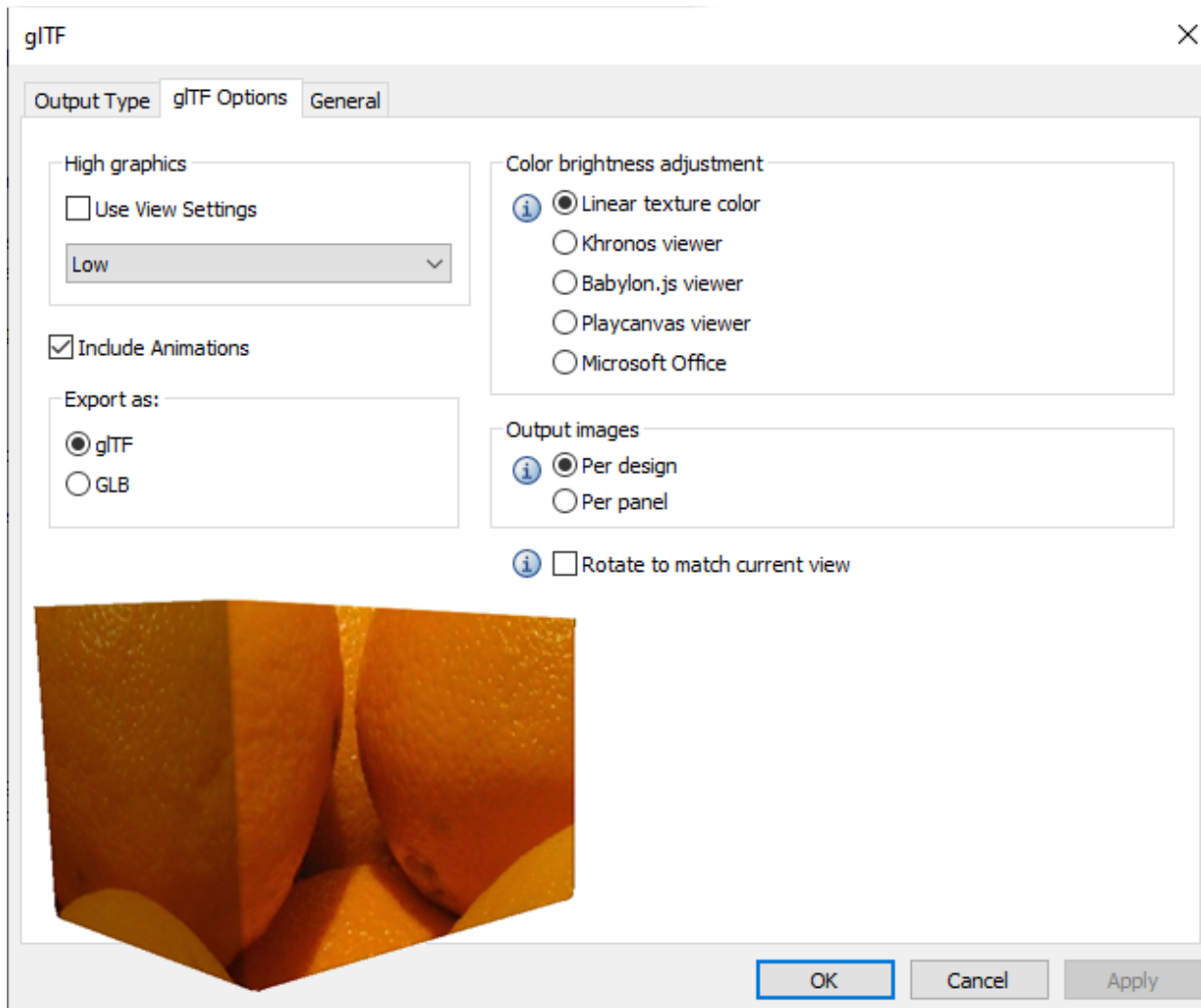
See <Artios folder>\<version>\Instlib\Geometry macros\<library>\Documentation for xls files that describe how the geometry macro was constructed.

Example:C:\Esko\Artios\ArtiosCAD20.0\InstLib\Geometry macros\ECMA\Documentation\EGM_A20_21_30_Cover_Tuck_flap_Bottom.xlsx

All previously released standards have been rerelease with improvements to the standard. These files are installed in the instlib directory in disk and will not replace any in ServerLib or ClientLib. The standards should be evaluated before considering moving them outside instlib for access by your designers.

3D Enhancements

- **g|TF/GLB** 3D formats are now supported as exports



If the ArtiosCAD has an animation, and the *Include Animations* checkbox is set, the animation will be included in the glTF or glb file.

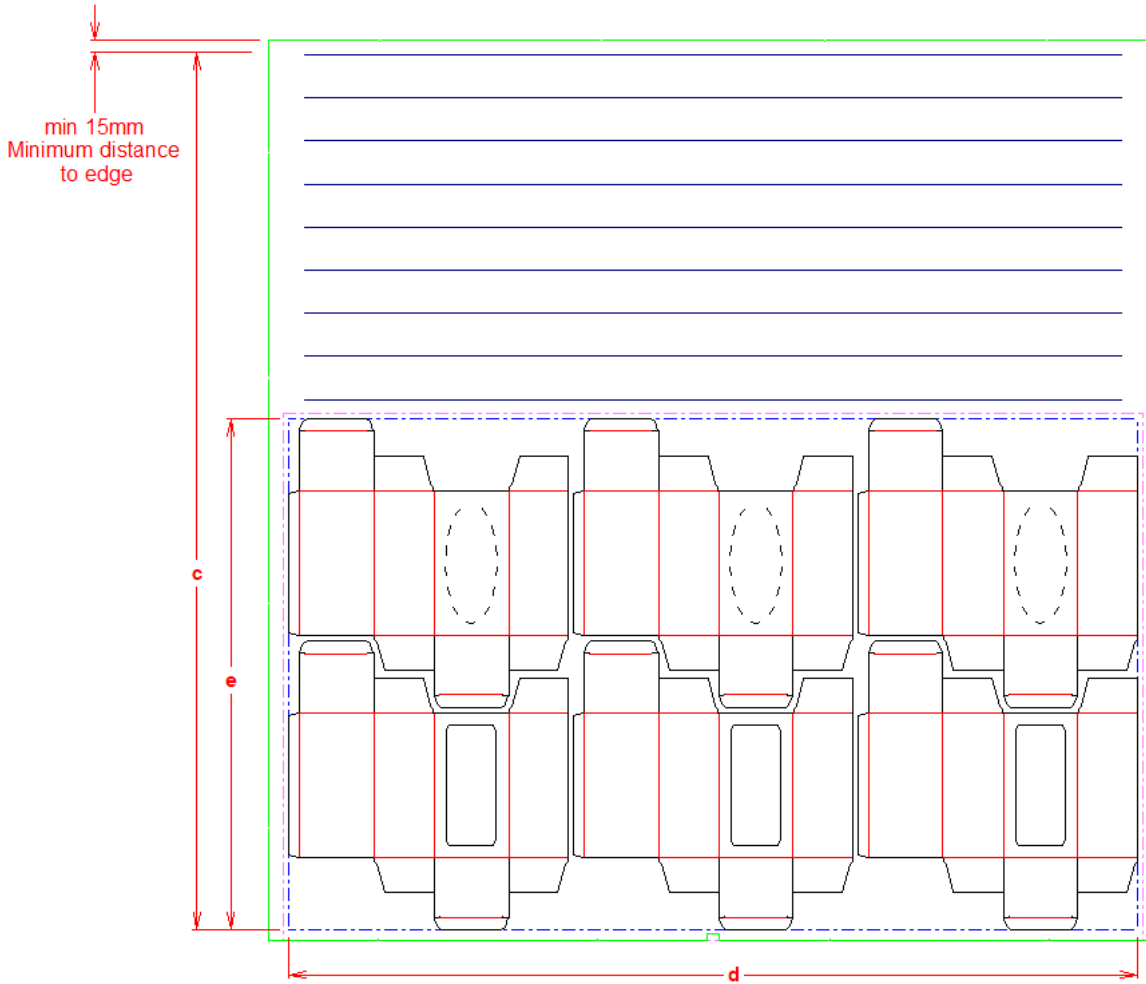
Animation Limitations:

- ArtiosCAD animations are keyframe-based. MS apps like word and powerpoint only support skeletal animations, therefore an ArtiosCAD-generated glb w/ an animation can open but will not run in an MS application.
- ArtiosCAD-generated glTF/glb files that contain *bend* animations will not run properly in the Khronos viewer. They will run properly in other viewers like Babylon.
- Designs with curved creases do not animate.
- Compression bends for Re-board do not animate.
- Autobottom and Gusset folds do not animate.

Layout Enhancements

Manufacturing Enhancements

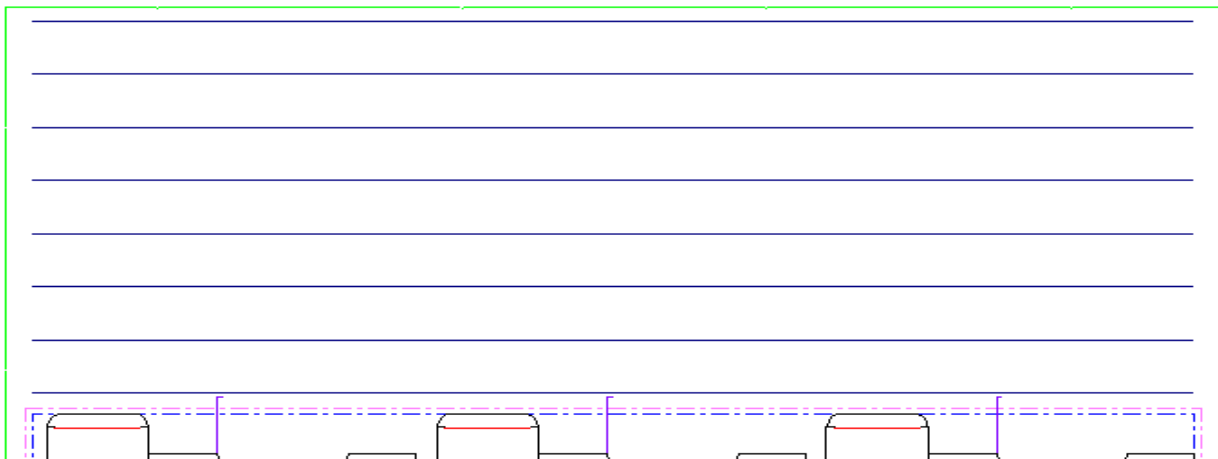
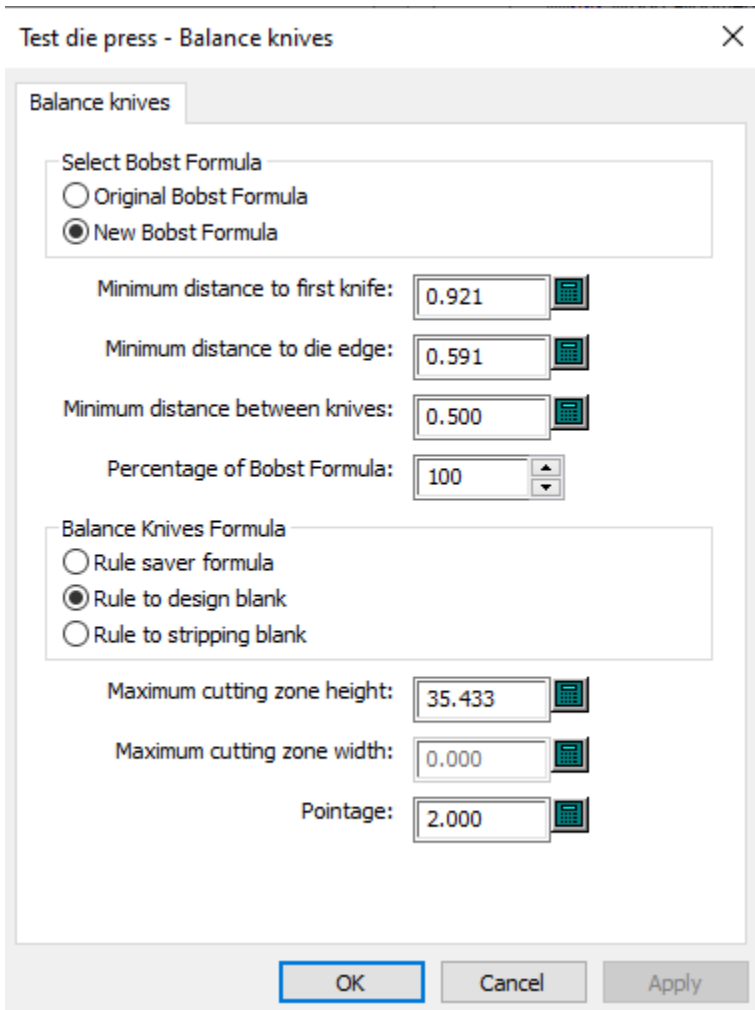
- **Balance knives** now allow for the latest Bobst SPO formula

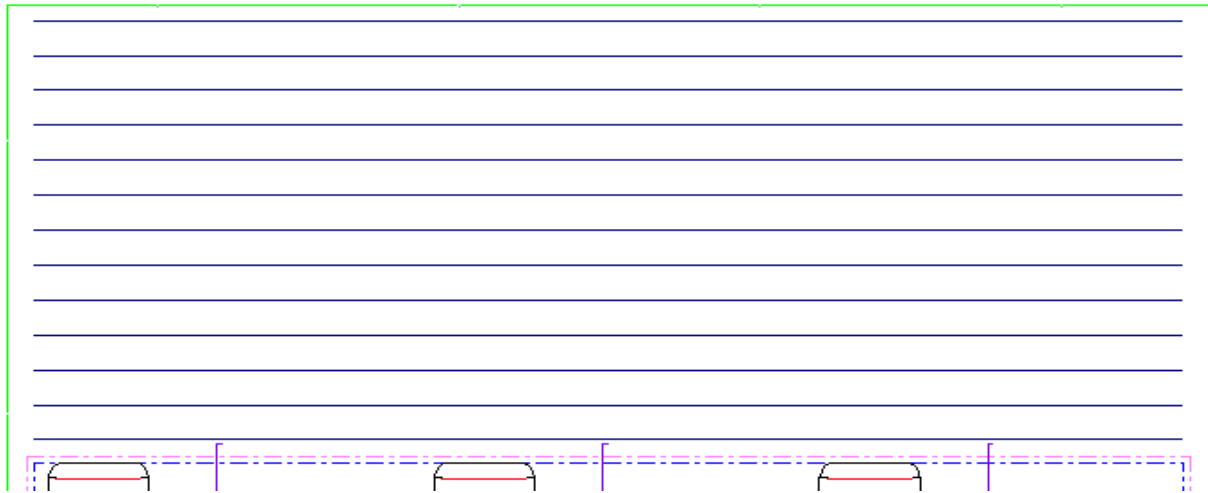


Rule Length	
Cuts: (a)	11088.50
Creases: (r)	8105.77
Balance rules:	10111.14
Stripping + scrap knives: (a)	603.69
Other rules: (a @ 50%)	1043.58
Total rule length:	30952.69

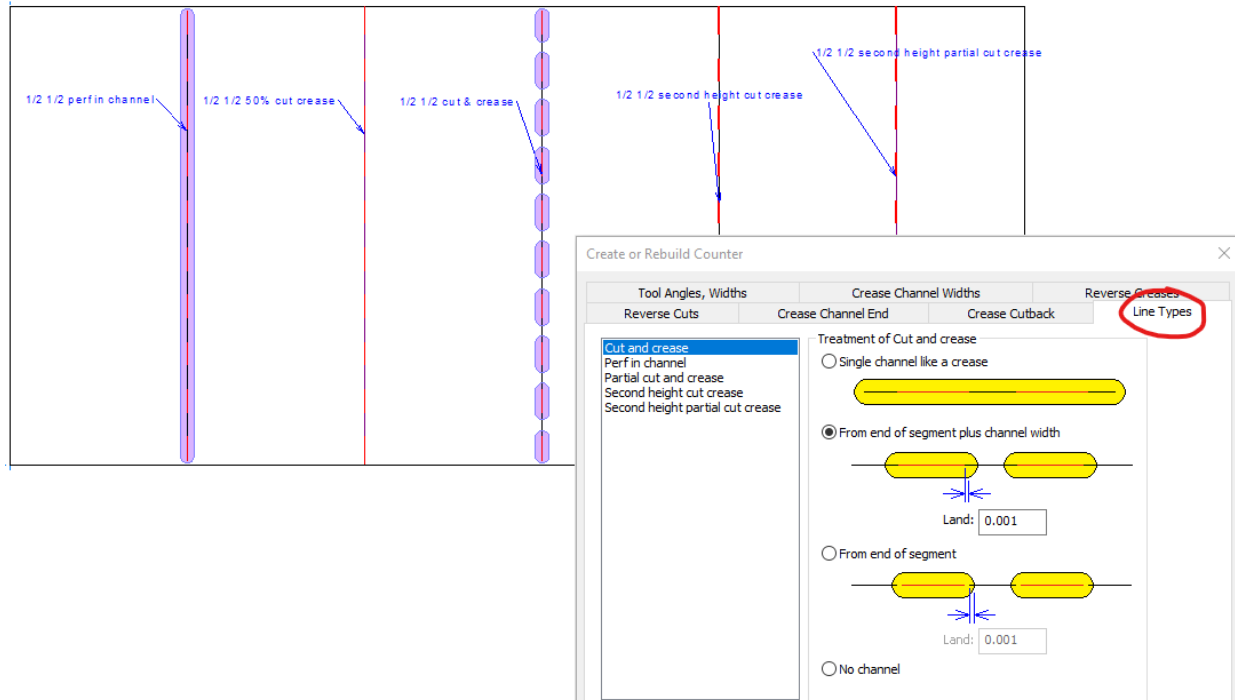
New bobst formula

$$N = \frac{(a + .7r) \times (c - e)}{e \times d} \text{ (round N up)}$$



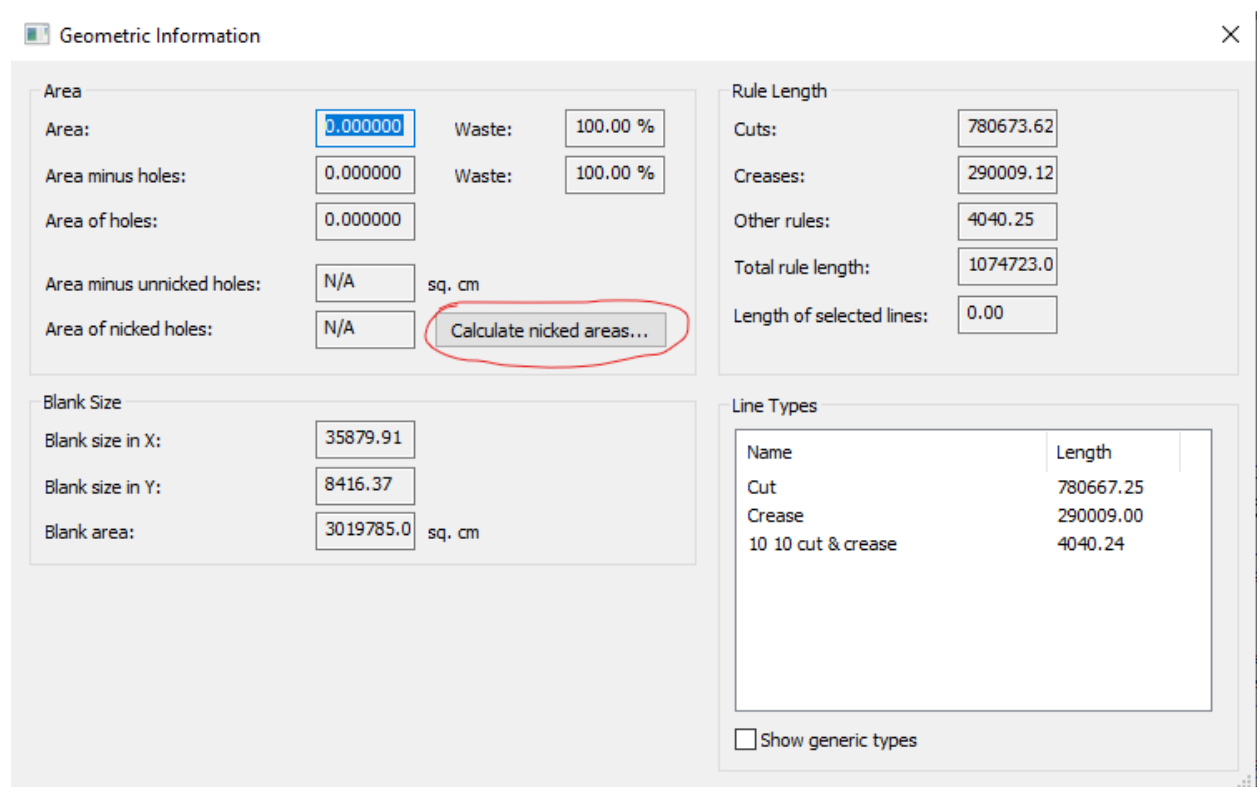


- **Steel counters** now allow various line types of alternating cuts and creases to be configured independently.



General Enhancements

- The **Info > Geometric Information** dialog will now test the amount of lines in a design. If the number of lines is larger than 4000, the nicked area calculations may be lengthy. Those calculations will be delayed, until the user pushes the button. This delay will allow the dialog to appear more quickly than it otherwise would if the nicking calculations had to be performed while the dialog was initializing.



Infrastructure Enhancements

Integration Enhancements

Enterprise

- ArtiosCAD Enterprise client and WebCenter [interoperability](#):
 ArtiosCAD 24.07 & WebCenter 24.07, 24.03
 ArtiosCAD 24.03 & WebCenter 24.07

Problem fixes:

Customer reported fixes	
ACAD-10650	ArtiosCAD- Mating function not correct
ACAD-10430	ArtiosCAD – Collada Export from A3D designs – wrong folding angles in Collada – not matching A3D design
ACAD-10732	ArtiosCAD – Hatch pattern issues
ACAD-11036	ArtiosCAD Rubber
ACAD-11125	ArtiosCAD – Some users unable to access licenses
ACAD-11126	ArtiosCAD – can't delete userfields entries in custom information dialog box
ACAD-11189	German- NL-255_00 – CF2 perms incorrect in report output
ACAD-11194	Zund-CFF2 output problem – ArtiosCAD24

ACAD-11195	ArtiosCAD v23.07 crash when importing pdf files
ACAD-11196	ArtiosCAD 23.11 Front waste separator
ACAD-11249	ArtiosCAD 24.03 – Conlines disappear when zoom in
ACAD-11264	D00638 ArtiosCAD copy times offset + zoom
ACAD-11407	ArtiosCAD 24.03 outputs are case sensitive
Important internal fixes	
ACAD-11185	PF CheckAccept Fail – Rule in glue flap target pierces material
ACAD-11261	Extreme board thickness causes crash on convert to 3D
ACAD-11267	Cannot Execute a command file with a full path
ACAD-11329	Gusset > double 4-corner > Hangs

Important Notes for All Users







- Starting with 18.1.1, ArtiosCAD introduced preflight with some automatic corrections. One of these auto-corrections included the ability to remove double knives/lines. [The preflight correction ability resulted in an algorithm that now favored longer lines over shorter lines, as a way to make better technical designs.](#) Previously, shorter lines were favored. Rebuildable designs have been encountered where “double knife” removal was used as a design technique to create slots for example of small cuts lines over creases. This has caused some issues where item references which might have existed before are now being deleted during the double line removal step and causing rebuilds to be incorrect or fail. This technique was not anticipated. ArtiosCAD is restored some of the rebuild issues and is still working through others.
- **If the deployed licensing for ArtiosCAD is a [network license](#), the license server **must** be updated with the new system controller provided on the installation media.**
- [Flexnet](#) is the only licensing system utilized in ArtiosCAD. Users must be prepared to convert the licensing from the hardware key, Sentinel LM or Elan LM to Flexnet. As of Jan 2016, Esko will no longer be able to provide licenses for legacy licensing systems.
- Esko now provides a [knowledge base](http://help.esko.com/knowledgebase) at <http://help.esko.com/knowledgebase>. This site can be used to find detailed information for ArtiosCAD and other Esko products about many support questions raised to Esko.
- [Esko software](https://mysoftware.esko.com) can be downloaded from <https://mysoftware.esko.com> with a valid support account.
- [User documentation](#) and help will be available from an online Esko site. Documentation will not be available from the media. The main site is <http://help.esko.com> from which ArtiosCAD and other Esko product documentation is available. The ArtiosCAD help menu will bring the user to the ArtiosCAD help page.
- The most [current Adobe®Illustrator® Esko plugins](#) can be found at <http://www.esko.com>. Navigate as described below.

The screenshot shows the Esko website interface. At the top left is the Esko logo with a green asterisk. To its right is a search bar and a language dropdown menu set to 'English'. Further right are 'Sign in' and 'Cart' links. A dark navigation bar contains links for 'Products', 'Solutions', 'Downloads', 'Company', 'Support', 'Store', and 'Contact'. The 'Support' link is highlighted with a red box, and its dropdown menu is open, showing options: 'Product Documentation', 'Downloads & Licenses' (highlighted with a red box), 'Training', 'Contact Esko Support', and 'Solution Services'. Below the navigation bar, the main heading is 'Downloads And Licenses'. Underneath are three tabs: 'Support Overview', 'Product Documentation', and 'Downloads & Licenses' (the active tab). The main content area features four sections: 'My Software and Hotfixes' (with a download icon), 'Trial Software' (with a clock icon), 'Free Software' (with a star icon and highlighted with a red box), and 'Mobile Apps' (with a smartphone icon). Each section includes a brief description and a 'Find out more...' link.

Free downloads

- Plugins for Adobe® Illustrator®
- Plugins for Coreldraw®
- Demos
- Plugins for Adobe® Photoshop®
- Tools
- Extensions
- Plugins for Adobe® Acrobat®
- Viewers

Plugins for Adobe® Illustrator®

-  **Esko Data Exchange 14 (CS6 and CC)**
 Data Exchange Plug-in is a free and simple to use plug-in for Adobe® Illustrator® that acts as a bridge between Adobe® Illustrator®, and the Esko applications Automation Engine, PackEdge, Plato and ArtPro and between Adobe® Illustrator® and ArtiosCAD.
-  **Esko Data Exchange 14 (CS6 and CC)**
 Data Exchange Plug-in is a free and simple to use plug-in for Adobe® Illustrator® that acts as a bridge between Adobe® Illustrator®, and the Esko applications Automation Engine, PackEdge, Plato and ArtPro and between Adobe® Illustrator® and ArtiosCAD.
-  **ai-cut 14 (CS6 and CC)**
 Automate the process of adding i-cut registration marks to your jobs.
-  **ai-cut 14 (CS6 and CC)**
 Automate the process of adding i-cut registration marks to your jobs.
-  **WebCenter Connector 14 (CS6 & CC)**
 The WebCenter Connector opens native ArtiosCAD single designs, and Studio (Collada) files, stored in WebCenter and ArtiosCAD Enterprise within Adobe Illustrator. It also exports normalized PDF files back to WebCenter.
-  **WebCenter Connector 14 (CS6 & CC)**
 The WebCenter Connector opens native ArtiosCAD single designs, and Studio (Collada) files, stored in WebCenter and ArtiosCAD Enterprise within Adobe Illustrator. It also exports normalized PDF files back to WebCenter.

Download

- › [Go to Download Center](#)
(secure link)
Artwork Systems software

Stay up to date

Receive information about Esko, upcoming events, products and website news by subscribing to the "[More! e-zine](#)".

- **PCIQ fonts** will be removed after ArtiosCAD 20. Please use true-type fonts.
- The **Artios** (introduced circa 1996 as a transition to ArtiosCAD) and **DBH** (the original interact format) file formats and use of the **devtab** as a configuration file for communicating with printers and ports are considered **obsolete** and support for them will be removed in post 18 versions of ArtiosCAD.
- **Exports** under File > Export > ArtiosCAD 3.2x and lower may be removed in future versions of ArtiosCAD.
- **Windows 11, Windows 10 editions** has been certified for use with ArtiosCAD as a standard mouse-controlled application. There are some installation limitations. See [KB344821882: Which versions of Windows 10 are supported?](#)
 - There are Metro GUI limitations:
 - The application folder structure organized in previous versions of windows 8 has been flattened. There will be multiple application tiles.
 - There is no support for touchpads nor touchscreens and any use of gestures is purely coincidental.

- The [IO Server](#) (ArtiosIO) is now supported on Windows 7 and higher since Artioscad 14. 1. This means older DataTech plotters still using the IPC controller or any device with an RS232 connection will be supported
- Many users have or are planning to deploy [Citrix, Terminal Services \(TS\) environments or some other application hosting system](#). Esko has *not* officially certified ArtiosCAD for use in a Citrix or TS environment, however, Esko does not prevent its use as long as the customer accepts responsibility for deployment and support of the environment.

Esko has verified that ArtiosCAD can run as a Citrix or Terminal Services client and has licensed ArtiosCAD appropriately, however, there are some limitations, *including but not limited to*:

 - Flexnet network licensing must be used.
 - License reservation or denial via floating license servers is not supported.
 - Graphics cards are installed on a Citrix or TS server and ArtiosCAD 3D uses the server card for 3D rendering. The performance of many concurrent 3D users is unknown.
 - The exact server specifications (example, memory, processor) for a given set of clients is unknown.
 - There are essentially no user defaults, since every Citrix or TS client is running from the same Citrix server.
 - There have been reports that access to local devices like hard drives or printers can freeze the machine. It is unknown if these issues have been addressed in newer versions of Citrix.
 - The HASP key used for the Alma PowerNest software in the ArtiosCAD rubbering layout can not be recognized by Citrix or TS and must be used on a client not connected to the Citrix server.
 - 64-bit Citrix has not been tested in any way.
- Many users are planning to deploy [VMWare ESX-based solutions, Hyper V \(Windows Server Virtualization\), Citrix XenServer or other hypervisor technology](#). Esko has *not* officially certified ArtiosCAD for use in this environment, however, Esko does not prevent its use as long as the customer accepts responsibility for deployment and support of the environment.
- Artioscad has been certified for [VMware Fusion v7](#). The customer may run later versions of his own accord on hardware and OS of his choosing, but Esko provides no warranty of the resulting combination.
- [3D graphics cards...](#) newer computers often come with some form of switchable graphics technology. This means that there are two or more video cards that switch off doing rendering duties on the system. Because of this, it is entirely possible that ArtiosCAD will be run using the low end, power saving chip. This drastically lowers

performance, and may introduce issues when working within ArtiosCAD 3D. It is sometimes also possible that the current chip changes, which can lead to all sorts of stability issues. It is recommended that the user go to the control panel controlling the graphics cards (NVidia Control Panel or AMD Catalyst Control Center) and create a profile for ArtiosCAD so it will use the high end chip always.

A number of rendering issues with NVidia cards and openGL have been raised. Changes were made to what is believed to be an improvement in the error handling of newer NVidia cards particularly those with dual graphic cards.

- Since its inception, Artioscad has provided a [database schema](#) that has always been backwards compatible with previous versions of Artioscad and 3rd party applications. An ArtiosCAD enterprise edition has now been released and utilizes a new database backend (WebCenter). It is expected that the database functionality for the conventional ArtiosCAD edition will be frozen at its current level. New design functionality will continue to be added. It is expected that a single database edition will be created in the future.