

# ArtiosCAD 23.11

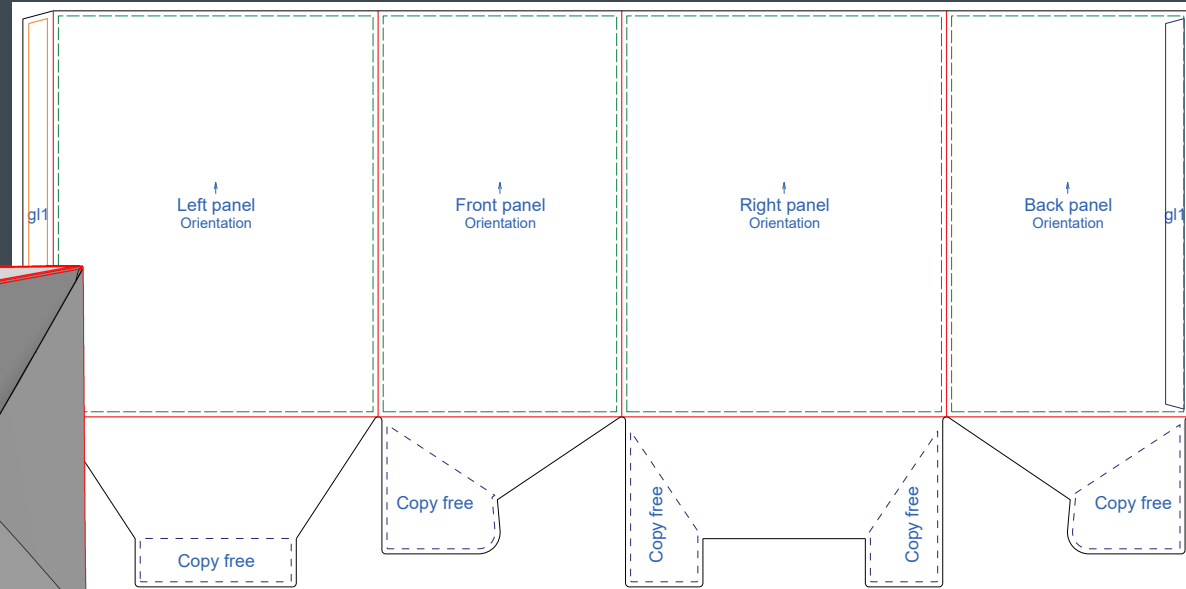
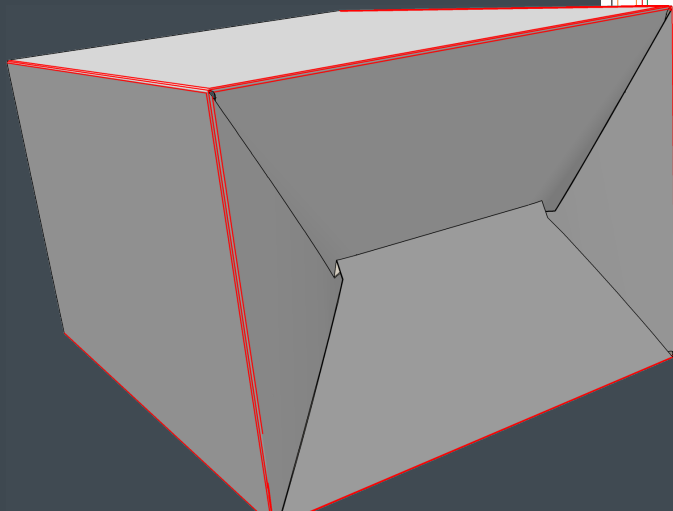
What's New

Richard Deroo

November 2023

# Improve Communication Between Structure and Graphics

Automatically recognize **copy free areas** of 1-2-3 bottom designs from 3D



# Assembling in 3D Made Easier

New **Panel Mate** tool

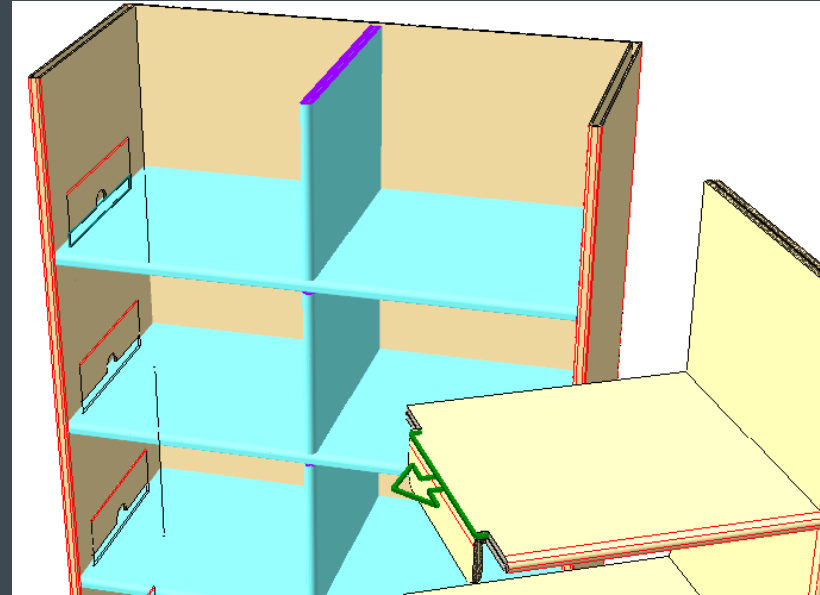
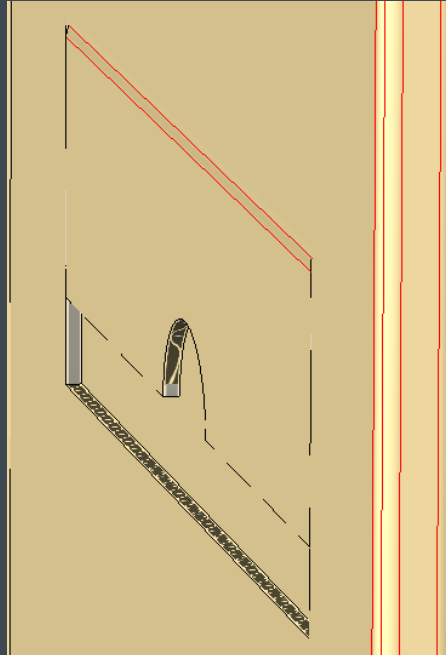
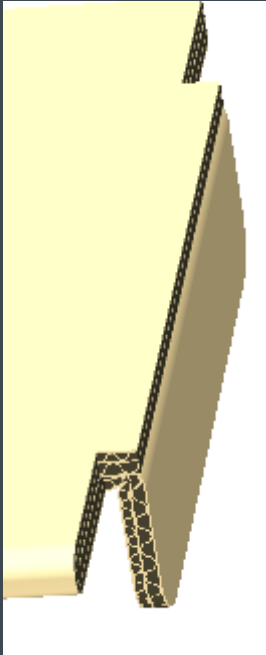
Align the edge of one panel against the surface of another panel

Assemble multi-part designs faster



# Assembling in 3D Made Easier

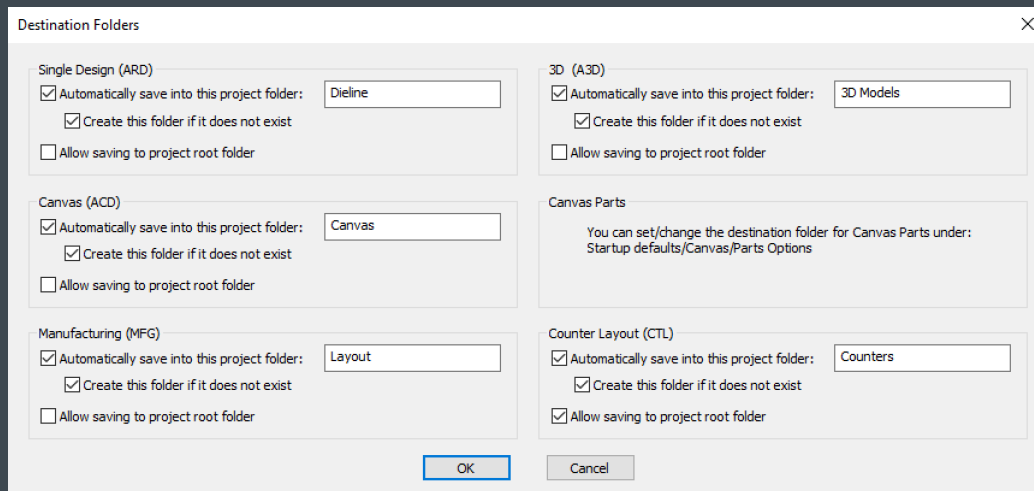
Folded tab is tucked inside slot in just a few clicks with ***Snap Tab/Slot*** tool



# Save to Default Folders in ArtiosCAD Enterprise\*



- Enforce saving to specific folders by document type
- Eliminate “File not found...” mistakes
- Maintain global consistency



Destination Folders

Single Design (ARD)

Automatically save into this project folder: Dieline

Create this folder if it does not exist

Allow saving to project root folder

3D (A3D)

Automatically save into this project folder: 3D Models

Create this folder if it does not exist

Allow saving to project root folder

Canvas (ACD)

Automatically save into this project folder: Canvas

Create this folder if it does not exist

Allow saving to project root folder

Canvas Parts

You can set/change the destination folder for Canvas Parts under:  
Startup defaults/Canvas/Parts Options

Manufacturing (MFG)

Automatically save into this project folder: Layout

Create this folder if it does not exist

Allow saving to project root folder

Counter Layout (CTL)

Automatically save into this project folder: Counters

Create this folder if it does not exist

Allow saving to project root folder

OK Cancel

\*requires WebCenter 23.11

- Access Management
  - Users
  - Groups
  - Roles
  - Companies
- CAD
  - Download Formats
  - Boards
- Setup
  - Attributes
    - Attributes
    - Attribute Categories
    - Restricted Sets
    - Lists
  - Characteristics
  - Search
  - Preferences
    - Dashboards
    - Menus
- Project Management
  - Templates

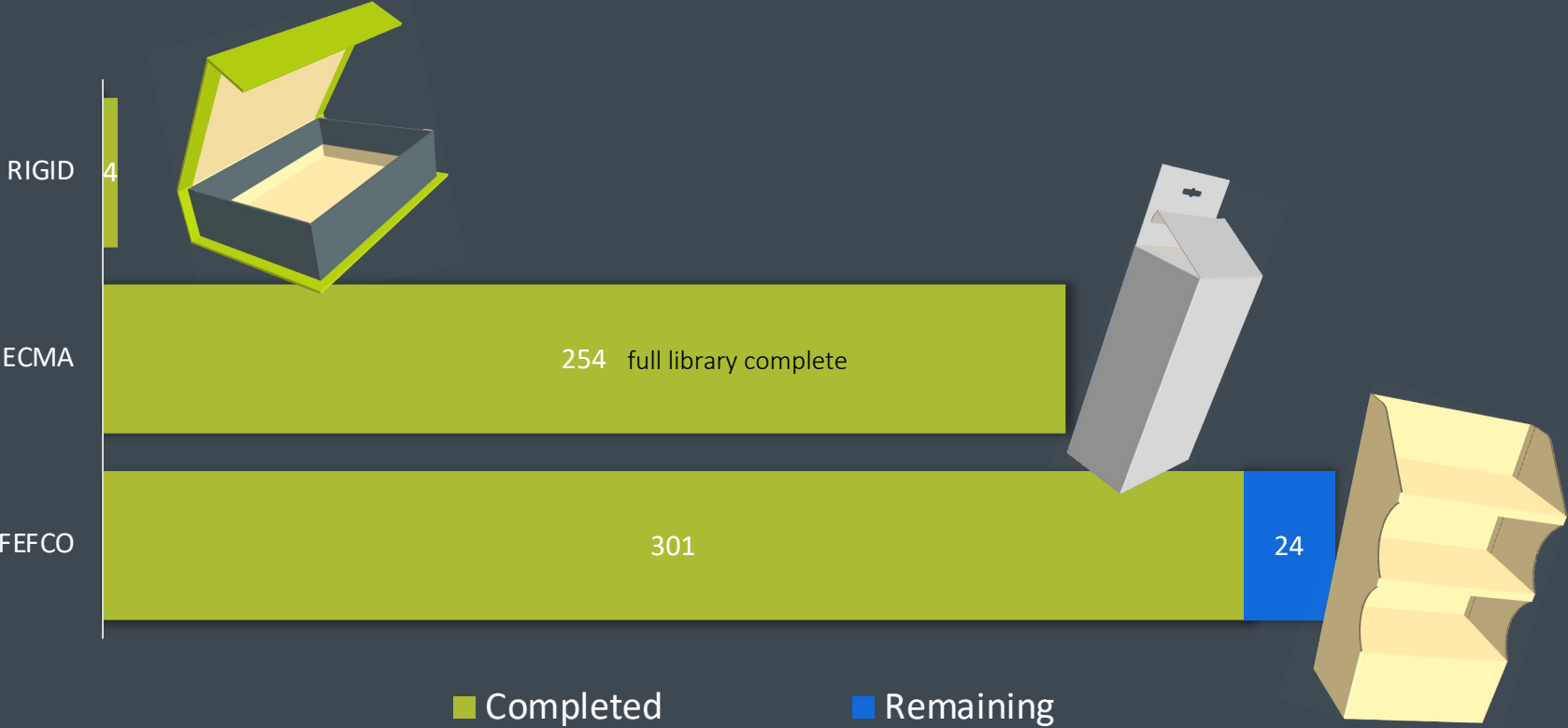
Save

## Greater Flexibility to Manage Boards\*

- Enable ArtiosCAD Enterprise users in a Group to edit the board database
- WebCenter ADMIN rights are no longer needed
- Empower CAD users who need board database access right

*\*requires WebCenter 23.11*

# Resizable Design Templates



# Additional Items

- A new save option for ArtiosCAD Enterprise users simplifies “saving as new”
- Bill of Material (BOM) report output performance has been improved
- Further user interface improvements for high-resolution monitor support
- Opening a PDF file with a link to another PDF file, will display the linked PDF file





Thank you