

# Esko ArtiosCAD 23.11

## Release Notes



# ArtiosCAD 23.11 Release Notes



Visit ArtiosCAD news...

<https://www.esko.com/lp/artioscad/artioscad-news>

-or-

Start ArtiosCAD. Navigate to Help > ArtiosCAD News

## What's new in:

- [Design](#)
- [3D](#)
- [Layout](#)
- [Manufacturing](#)
- [General](#)
- [Infrastructure](#)
- [Integration](#)
- [View](#)
- **[Enterprise](#)**

## [Problem fixes](#)

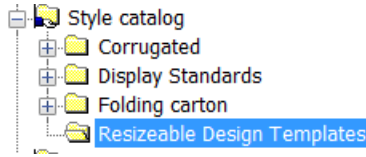
## [Important notes for all users](#)

## What's new?

### Design Enhancements

- **Resizable Design Templates (RDTs)**, aka, standards, for Fefco and ECMA have been updated in the ArtiosCAD style catalog. Updates will be an ongoing endeavor and new styles will be added in future releases.

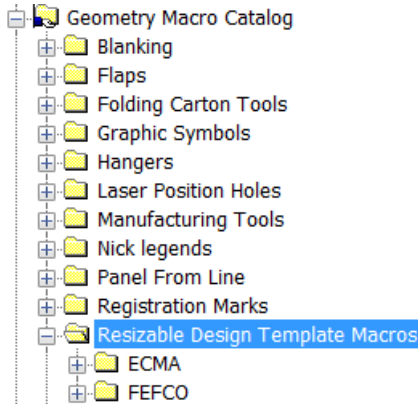
Navigate to Options > Defaults > Style Catalog > Resizable Design Templates



See <Artios folder>\<version>\Instlib\<library>\Documentation for xls files that describe how the RDT was constructed.

Example: C:\Esko\Artios\ArtiosCAD20.0\InstLib\ECMA\Documentation\ET\_A20.20.01.01\_.xlsx

Geometry macros which were used to construct the RDTs have also been added.

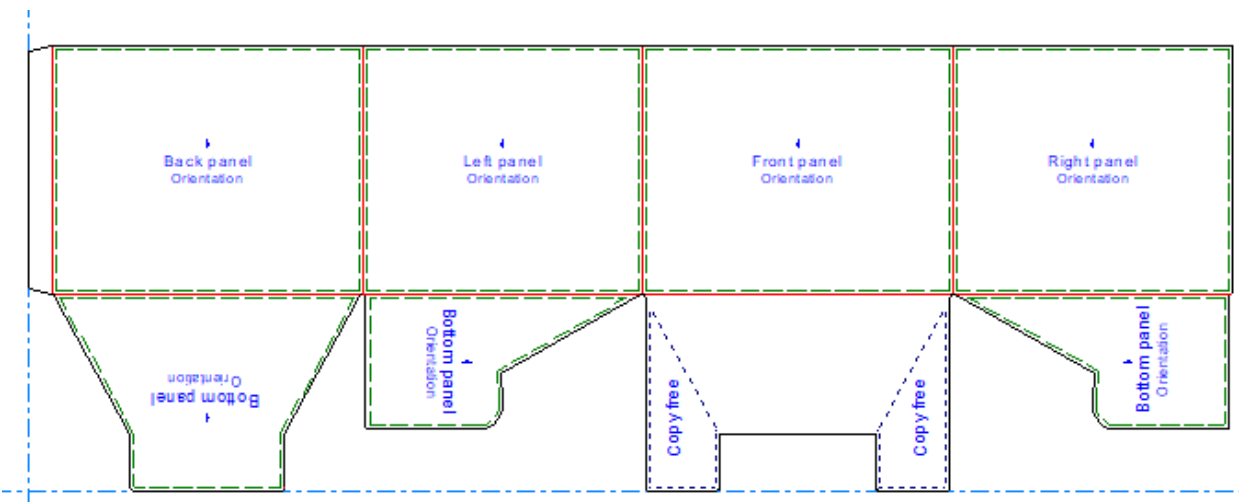


See <Artios folder>\<version>\Instlib\Geometry macros\<library>\Documentation for xls files that describe how the geometry macro was constructed.

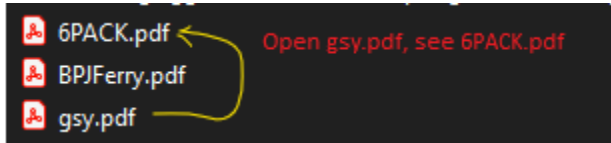
Example: C:\Esko\Artios\ArtiosCAD20.0\InstLib\Geometry macros\ECMA\Documentation\EGM\_A20\_21\_30\_Cover\_Tuck\_flap\_Bottom.xlsx

All previously released standards have been rerelease with improvements to the standard. These files are installed in the instlib directory in disk and will not replace any in ServerLib or ClientLib. The standards should be evaluated before considering moving them outside instlib for access by your designers.

- [Artwork panels recognizes the copy free pattern of a 123 bottom](#)

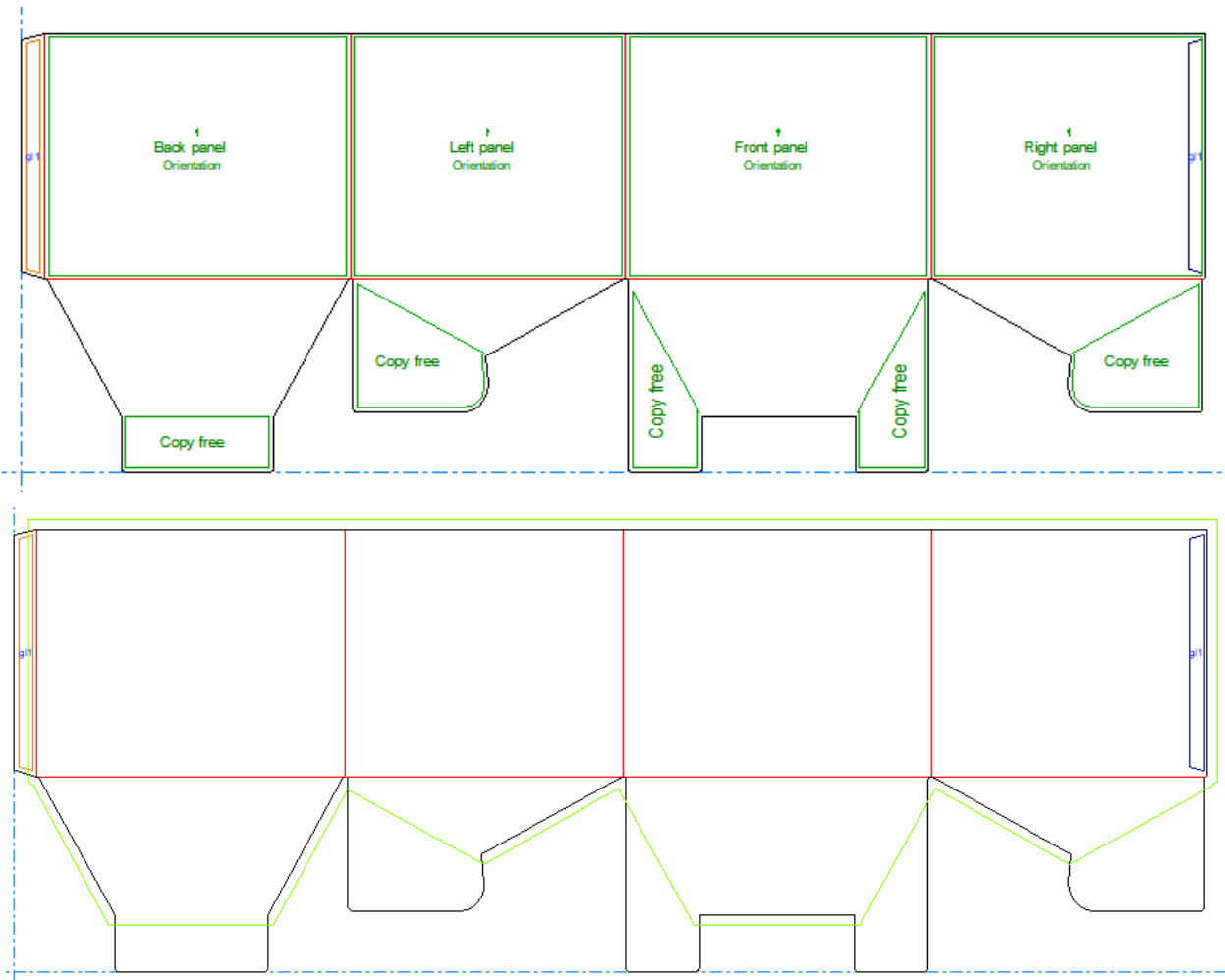


- Opening a PDF file with a link to another PDF file, will display the linked PDF file

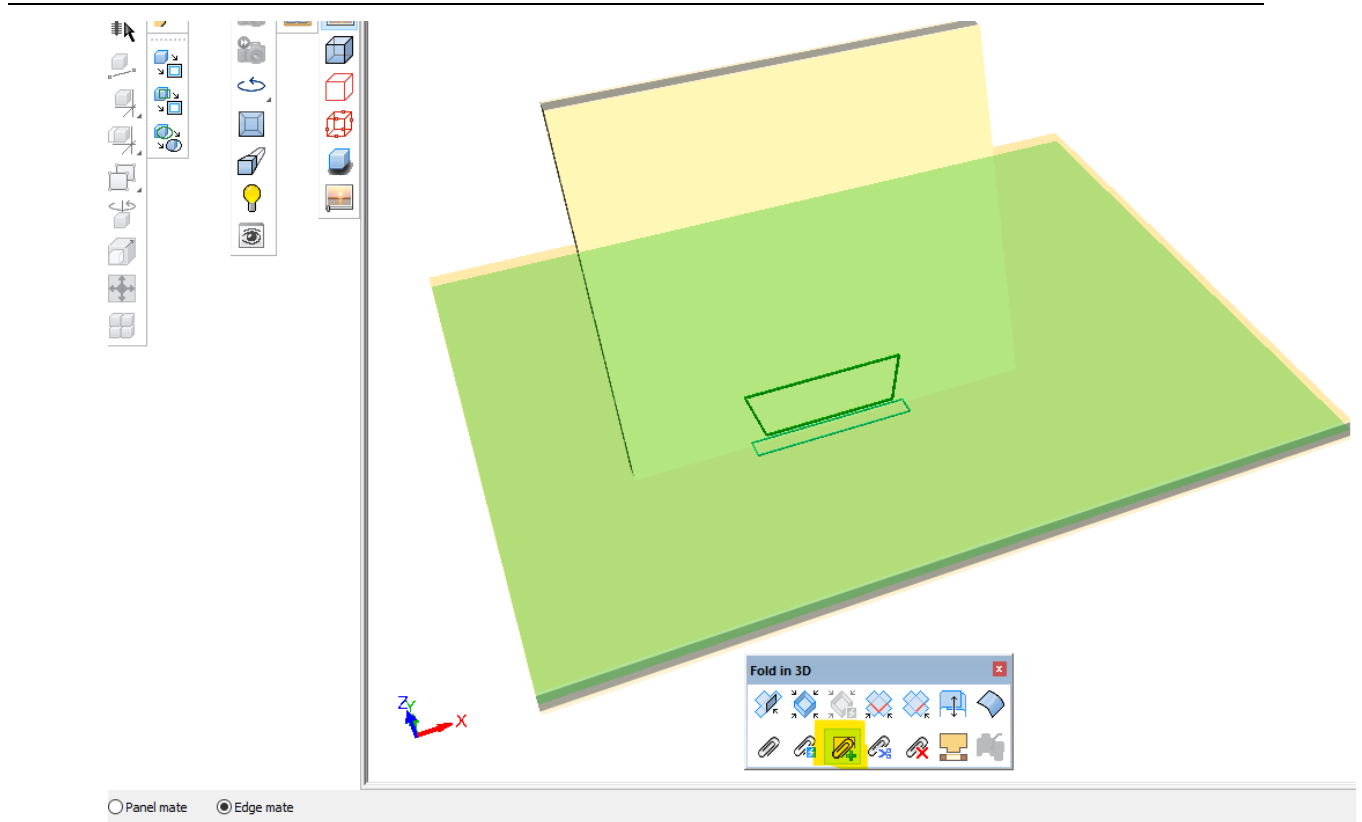


### 3D Enhancements

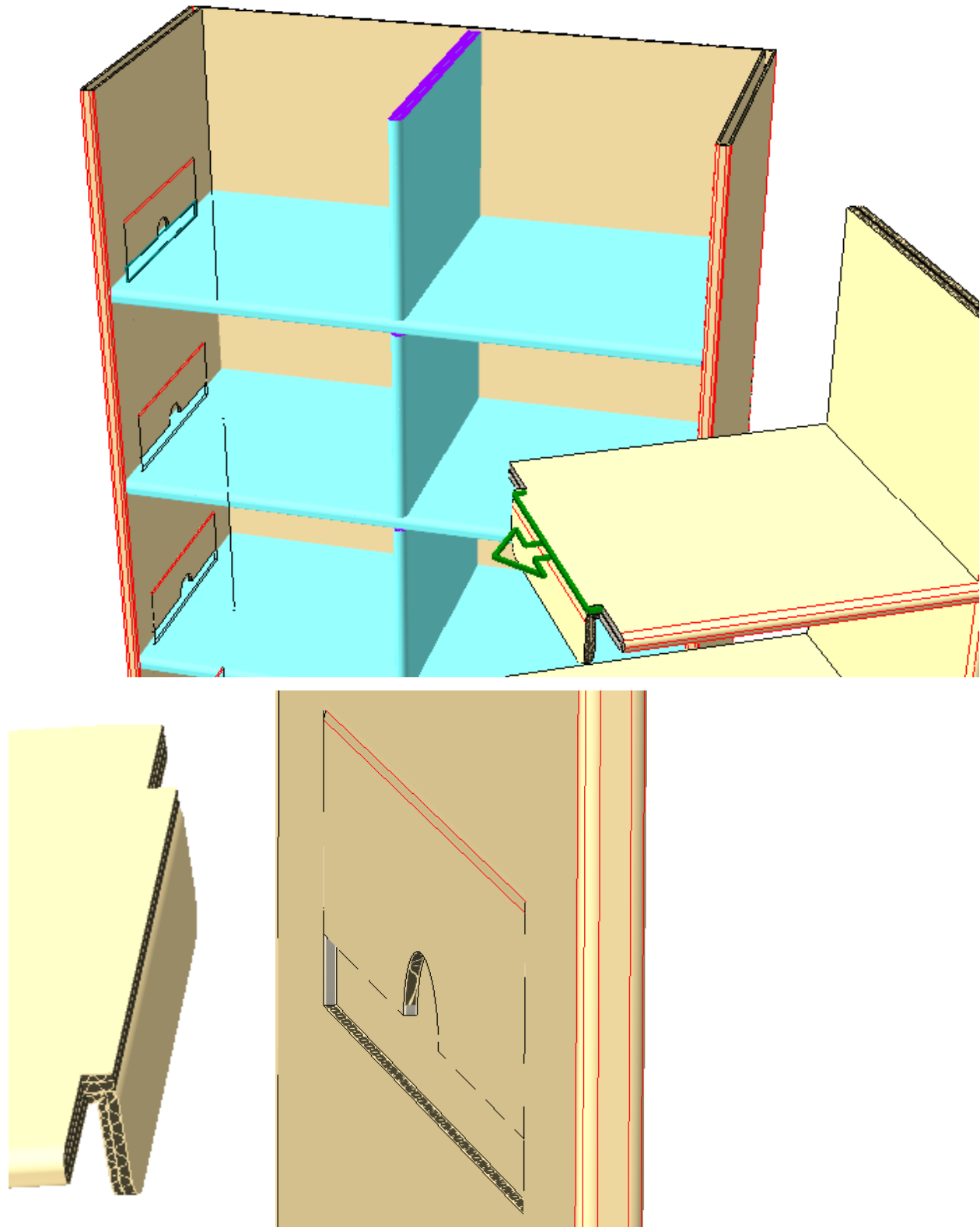
- Artwork panels & Bleed recognizes the copy free pattern of a 123 bottom from 3D



- An new mate type called **edge mate** has been added. If the Panel mate tool is activated in 3D, the user has the option to specify an edge mate which aligns the edge of one panel against the surface of another panel.

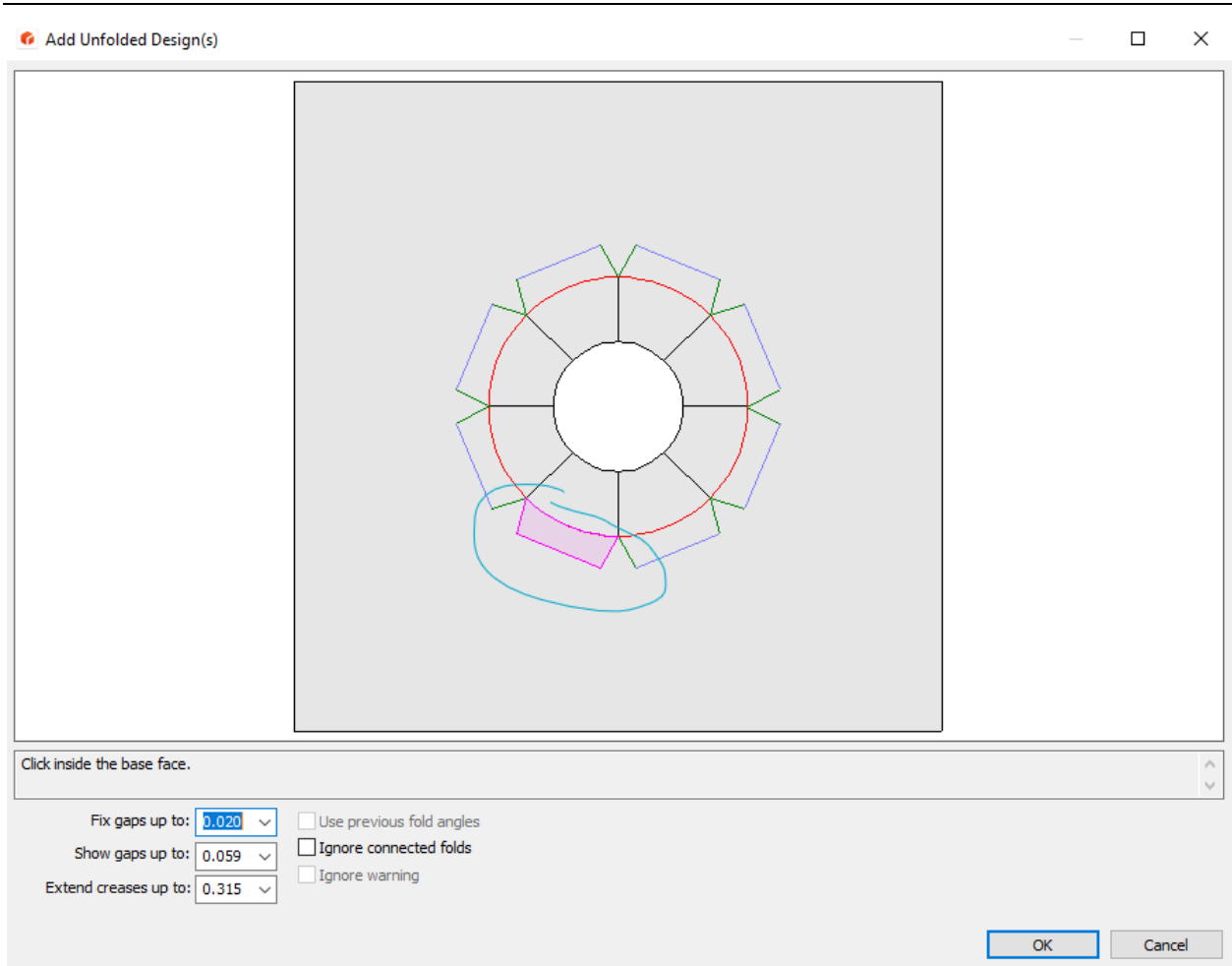


- New **tab in slot** shape is recognized.  
Folded tab is tucked inside slot

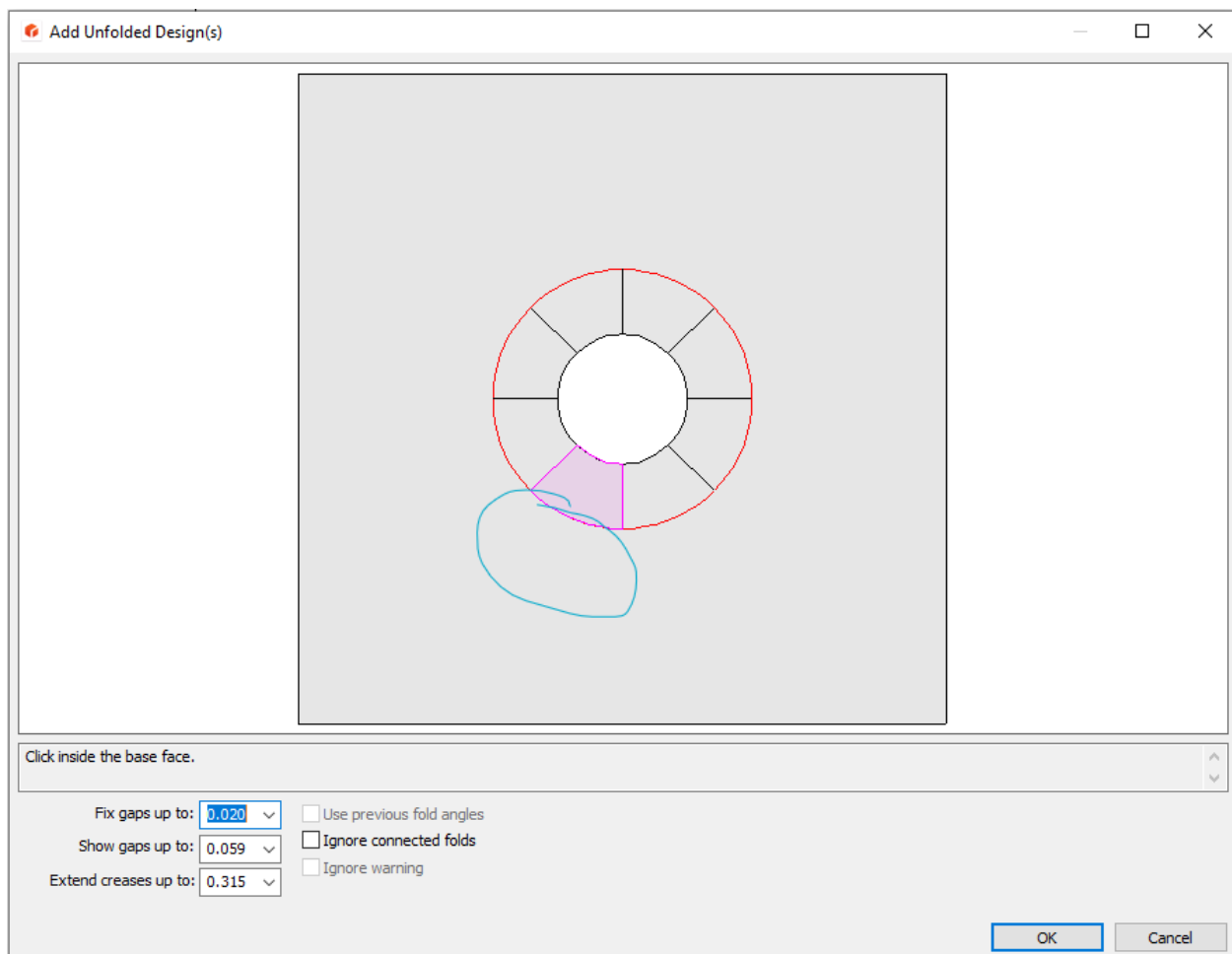


- Internal flaps with [arced creases](#) no longer create an adjoining pseudo-panel. 23.07 which created a selectable adjoining pseudo-panel

**ARTIOSCAD 23.11**  
**RELEASE NOTES**



23.11 The pseudo panel is filtered out



## **Layout Enhancements**

## **Manufacturing Enhancements**

## **General Enhancements**

## **Infrastructure Enhancements**

- [Recent Nvidia driver updates prevented 3D anchor points](#) and other 3D ornaments from being properly rendered. As such ArtiosCAD rendering has been updated to fully utilize OpenGL.
- ArtiosCAD begins to better interact w/ [hi-res monitors and text scaling](#) This is a starter. ArtiosCAD will evolve over time.



Some apps won't respond to scaling changes until you close and reopen them.

Change the size of text, apps, and other items

175% ▾

Advanced scaling settings

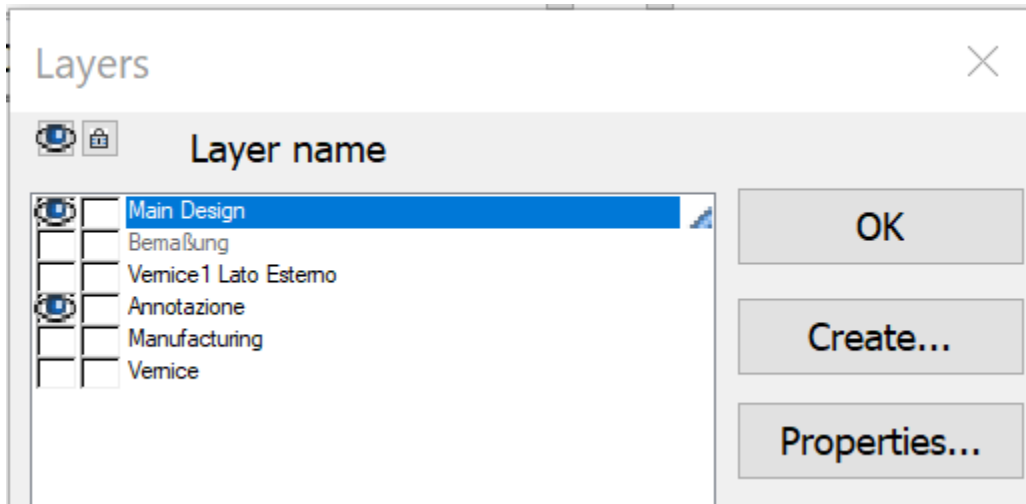
Display resolution

1920 × 1080 (Recommended) ▾

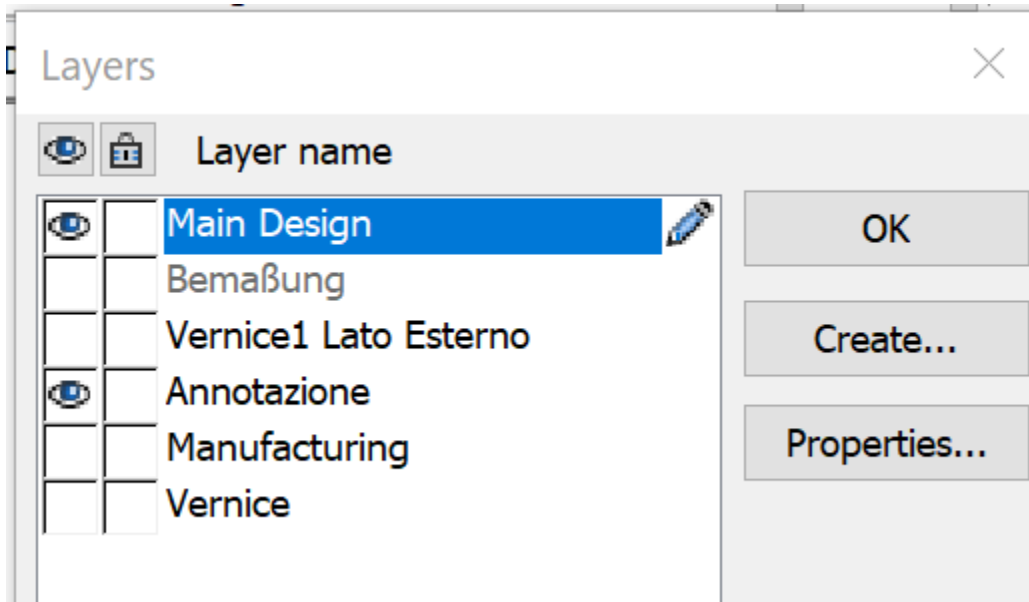
Display orientation

Landscape ▾

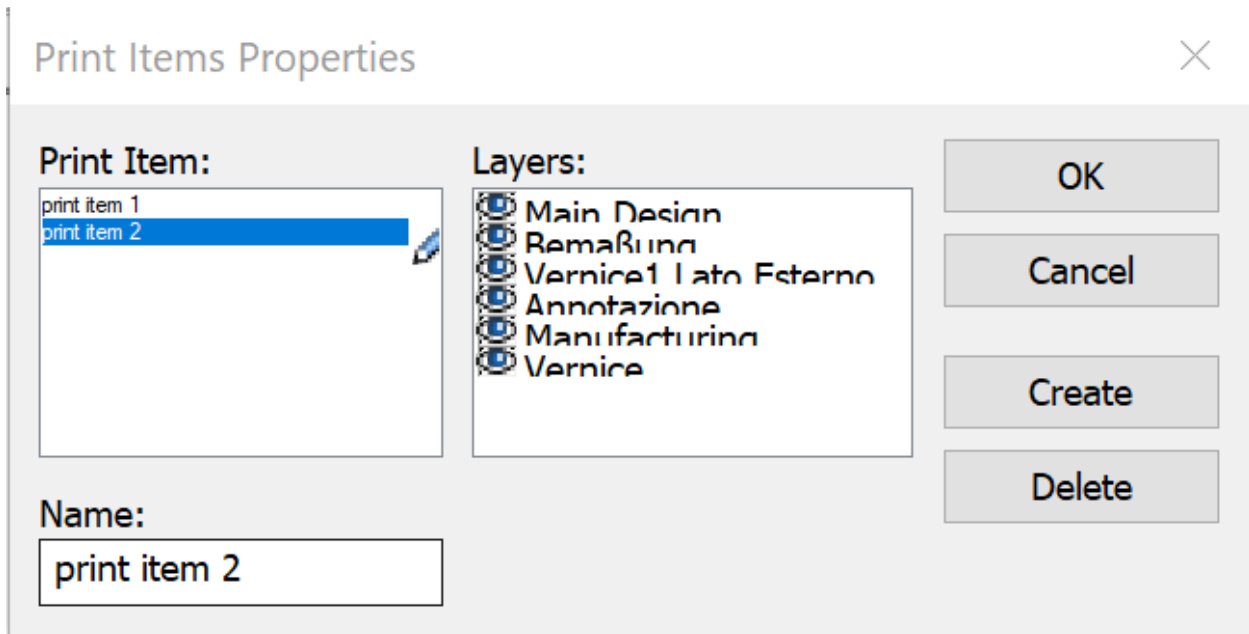
Layers dialog



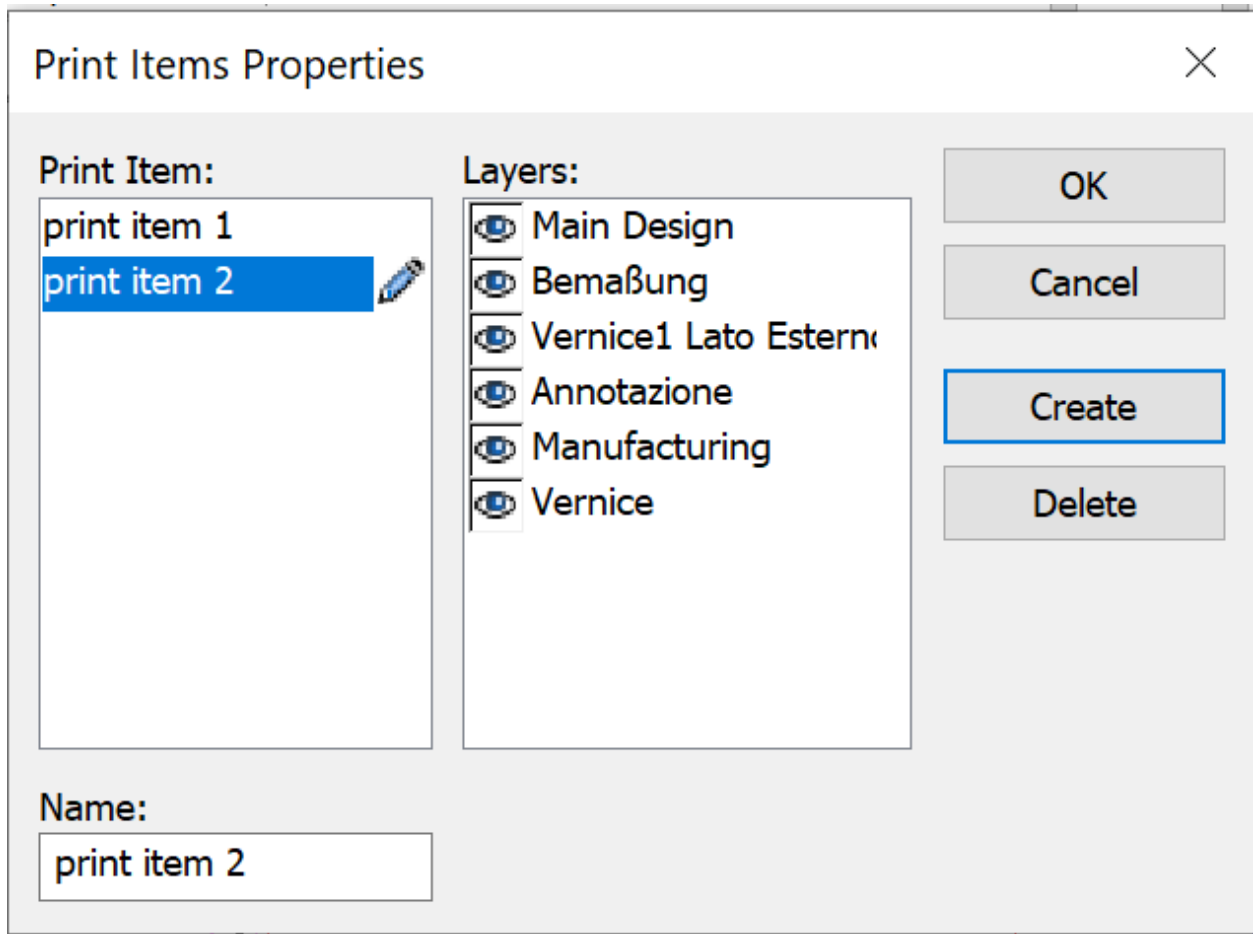
vs



Print items dialog



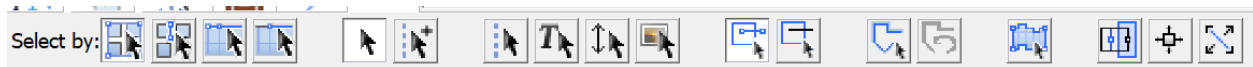
Vs



Select tool



Vs



## Integration Enhancements

### Enterprise

- ArtiosCAD Enterprise client and WebCenter [interoperability](#):

ArtiosCAD 23.11 should only be used with WebCenter 23.11 due to flexible admin for boards and to be able to experience task type performance improvement.

- ArtiosCAD is able to access the [group rights and edit boards](#) if the right has been granted

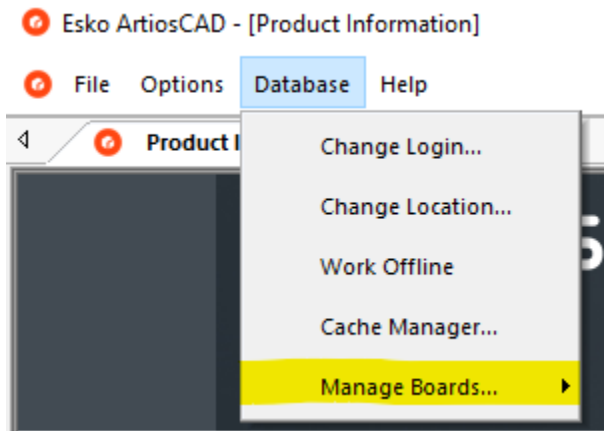
## Rights of Group USERS

Groups   New Group   General   **Rights**   Visibility   Download   Projects   History

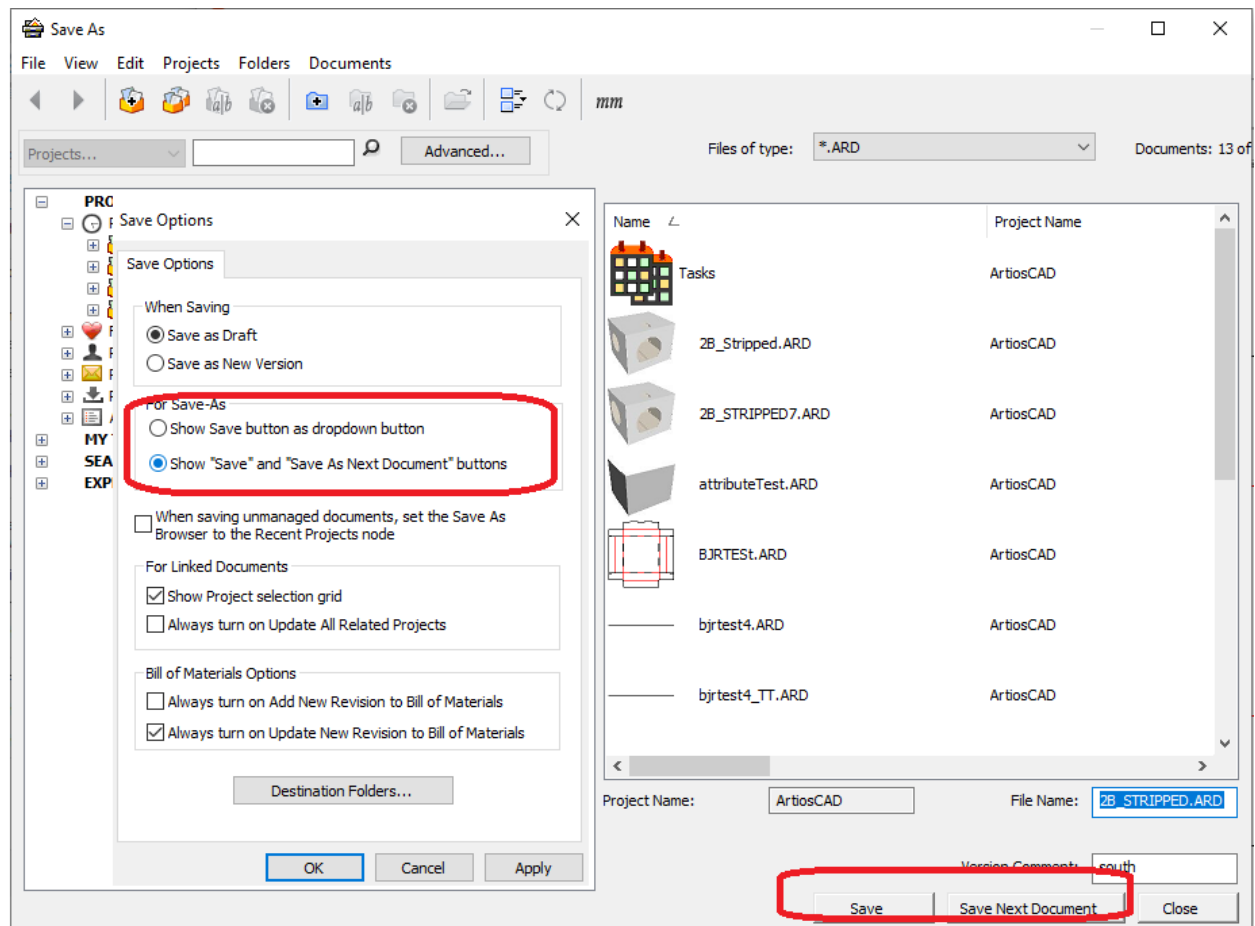
- Access Management
  - Users
  - Groups
  - Roles
  - Companies
- CAD
  - Download Formats
  - Boards
- Setup
  - Attributes
    - Attributes
    - Attribute Categories
    - Restricted Sets
    - Lists
  - Characteristics
  - Search
  - Preferences
    - Dashboards
    - Menus
- Project Management
  - Templates

**Save**

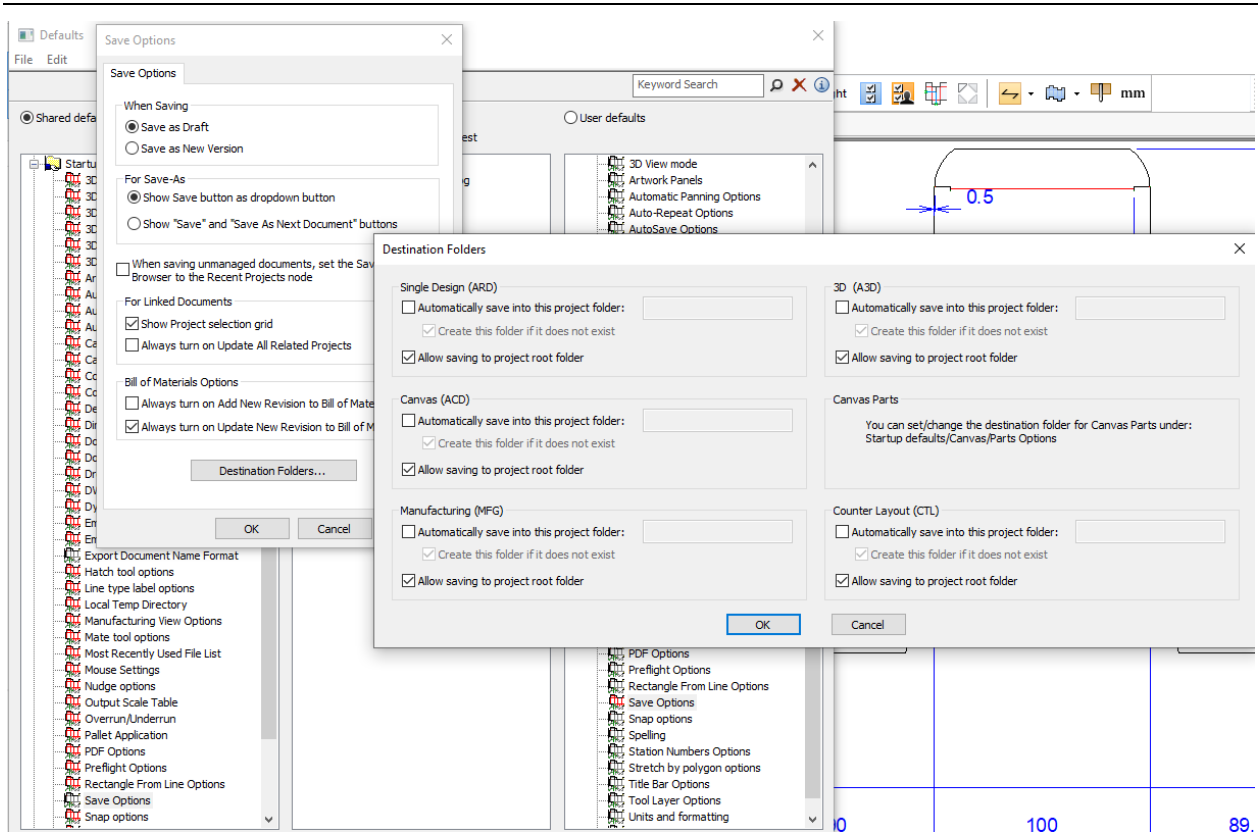
**ARTIOSCAD 23.11**  
**RELEASE NOTES**



- ArtiosCAD has been improved to handle **very large numbers of task types**. It will no longer timeout.
- **BOM report creation performance** has been improved relative to 18.1.1
- A **new save option** has been introduced to allow easily select a **Save-As** option.



- ArtiosCAD now has the ability to save to **predefined folders**. A folder can be specified per document which will allow a designer to save to a project and have the document saved to the predefined folder. The designer can still save to a different folder in the project if selected.



- Flexible admin for boards

## Problem fixes:

### Customer reported fixes

- ACAD-10486 ArtiosCAD: Layout to MFG – parts movement
- ACAD-10492 ArtiosCAD 23.07 PDF Import will not save Flute/Grain Direction
- ACAD-10499 Re: Linpak with MC – PDF files from ArtiosCAD freezes CorelDRAW
- ACAD-10519 ArtiosCAD 23.03 pdf import
- ACAD-10550 Issue with GeoMacro – ArtiosCAD Enterprise 23.07 bld2318
- ACAD-10556 Output to PDF shows scaling issue
- ACAD-10592 ArtiosCAD Rule Path Bridging Corruption and Software Crash
- ACAD-10652 Station number missing in cf2 output when using report
- ACAD-10660 ArtiosCAD – Manufacturing report problems
- ACAD-10666 Problem with the integration between ArtiosCAD and CAPE
- ACAD-10672 ArtiosCAD Enterprise 23.07 bld 2318 browser issue when opening a file
- ACAD-10742 Export PDF with Layers issue...

### Important internal fixes

- ACAD-8826 Sending 3D design to CAPE after using Cross Section tool fails
- ACAD-10431 ArtiosCAD – Cape 3D Weight Calculation is Wrong? + material selection
- ACAD-10424 ArtiosCAD can appear to hang when trying to start up spell checker

## Important Notes for All Users

- Starting with 18.1.1, ArtiosCAD introduced preflight with some automatic corrections. One of these auto-corrections included the ability to remove double knives/lines. [The preflight correction ability resulted in an algorithm that now favored longer lines over shorter lines, as a way to make better technical designs.](#) Previously, shorter lines were favored. Rebuildable designs have been encountered where “double knife” removal was used as a design technique to create slots for example of small cuts lines over creases. This has caused some issues where item references which might have existed before are now being deleted during the double line removal step and causing rebuilds to be incorrect or fail. This technique was not anticipated. ArtiosCAD is restored some of the rebuild issues and is still working through others.
- **If the deployed licensing for ArtiosCAD is a [network license](#), the license server *\*must\** be updated with the new system controller provided on the installation media.**
- [Flexnet](#) is the only licensing system utilized in ArtiosCAD. Users must be prepared to convert the licensing from the hardware key, Sentinel LM or Elan LM to Flexnet. As of Jan 2016, Esko will no longer be able to provide licenses for legacy licensing systems.
- Esko now provides a [knowledge base](http://help.esko.com/knowledgebase) at <http://help.esko.com/knowledgebase>. This site can be used to find detailed information for ArtiosCAD and other Esko products about many support questions raised to Esko.
- [Esko software](#) can be downloaded from <https://mysoftware.esko.com> with a valid support account.
- [User documentation](#) and help will be available from an online Esko site. Documentation will not be available from the media. The main site is <http://help.esko.com> from which ArtiosCAD and other Esko product documentation is available. The ArtiosCAD help menu will bring the user to the ArtiosCAD help page.
- The most [current Adobe®Illustrator® Esko plugins](#) can be found at <http://www.esko.com>. Navigate as described below.

The screenshot shows the ESKO website interface. At the top left is the ESKO logo with a green asterisk. To its right is a search bar and a language dropdown set to 'English'. Further right are links for 'Sign in' and 'Cart'. A dark navigation bar contains links for 'Products', 'Solutions', 'Downloads', 'Company', 'Support', 'Store', and 'Contact'. The 'Support' link is highlighted with a red box, and its dropdown menu is open, showing options: 'Product Documentation', 'Downloads & Licenses' (highlighted with a red box), 'Training', 'Contact Esko Support', and 'Solution Services'. Below the navigation bar, the page title is 'Downloads And Licenses'. There are three tabs: 'Support Overview', 'Product Documentation', and 'Downloads & Licenses' (which is active). The main content area features four sections: 'My Software and Hotfixes' with a download icon, 'Trial Software' with a clock icon, 'Free Software' with a star icon (highlighted with a red box), and 'Mobile Apps' with a smartphone icon. Each section includes a brief description and a 'Find out more...' link.



## Free downloads

- Plugins for Adobe® Illustrator®
- Plugins for Coreldraw®
- Demos
- Plugins for Adobe® Photoshop®
- Tools
- Extensions
- Plugins for Adobe® Acrobat®
- Viewers

### Plugins for Adobe® Illustrator®

#### Esko Data Exchange 14 (CS6 and CC)

Data Exchange Plug-in is a free and simple to use plug-in for Adobe® Illustrator® that acts as a bridge between Adobe® Illustrator®, and the Esko applications Automation Engine, PackEdge, Plato and ArtPro and between Adobe® Illustrator® and ArtiosCAD.

#### Esko Data Exchange 14 (CS6 and CC)

Data Exchange Plug-in is a free and simple to use plug-in for Adobe® Illustrator® that acts as a bridge between Adobe® Illustrator®, and the Esko applications Automation Engine, PackEdge, Plato and ArtPro and between Adobe® Illustrator® and ArtiosCAD.

#### ai-cut 14 (CS6 and CC)

Automate the process of adding i-cut registration marks to your jobs.

#### ai-cut 14 (CS6 and CC)

Automate the process of adding i-cut registration marks to your jobs.

#### WebCenter Connector 14 (CS6 & CC)

The WebCenter Connector opens native ArtiosCAD single designs, and Studio (Collada) files, stored in WebCenter and ArtiosCAD Enterprise within Adobe Illustrator. It also exports normalized PDF files back to WebCenter.

#### WebCenter Connector 14 (CS6 & CC)

The WebCenter Connector opens native ArtiosCAD single designs, and Studio (Collada) files, stored in WebCenter and ArtiosCAD Enterprise within Adobe Illustrator. It also exports normalized PDF files back to WebCenter.

### Download

- > Go to Download Center (secure link)
- Artwork Systems software

### Stay up to date

Receive information about Esko, upcoming events, products and website news by subscribing to the "More! e-zine".

- **PCIQ fonts** will be removed after ArtiosCAD 20. Please use true-type fonts.
- The **Artios** (introduced circa 1996 as a transition to ArtiosCAD) and **DBH** (the original interact format) file formats and use of the **devtab** as a configuration file for communicating with printers and ports are considered **obsolete** and support for them will be removed in post 18 versions of ArtiosCAD.
- **Exports** under File > Export > ArtiosCAD 3.2x and lower may be removed in future versions of ArtiosCAD.
- **Windows 11, Windows 10 editions** has been certified for use with ArtiosCAD as a standard mouse-controlled application. There are some installation limitations. See [KB344821882: Which versions of Windows 10 are supported?](#)
  - There are Metro GUI limitations:
    - The application folder structure organized in previous versions of windows 8 has been flattened. There will be multiple application tiles.
    - There is no support for touchpads nor touchscreens and any use of gestures is purely coincidental.

- The [IO Server](#) (ArtiosIO) is now supported on Windows 7 and higher since Artioscad 14. 1. This means older DataTech plotters still using the IPC controller or any device with an RS232 connection will be supported
- Many users have or are planning to deploy [Citrix, Terminal Services \(TS\) environments or some other application hosting system](#). Esko has *not* officially certified ArtiosCAD for use in a Citrix or TS environment, however, Esko does not prevent its use as long as the customer accepts responsibility for deployment and support of the environment.

Esko has verified that ArtiosCAD can run as a Citrix or Terminal Services client and has licensed ArtiosCAD appropriately, however, there are some limitations, *including but not limited to*:

- Flexnet network licensing must be used.
  - License reservation or denial via floating license servers is not supported.
  - Graphics cards are installed on a Citrix or TS server and ArtiosCAD 3D uses the server card for 3D rendering. The performance of many concurrent 3D users is unknown.
  - The exact server specifications (example, memory, processor) for a given set of clients is unknown.
  - There are essentially no user defaults, since every Citrix or TS client is running from the same Citrix server.
  - There have been reports that access to local devices like hard drives or printers can freeze the machine. It is unknown if these issues have been addressed in newer versions of Citrix.
  - The HASP key used for the Alma PowerNest software in the ArtiosCAD rubbering layout can not be recognized by Citrix or TS and must be used on a client not connected to the Citrix server.
  - 64-bit Citrix has not been tested in any way.
- Many users are planning to deploy [VMWare ESX-based solutions, Hyper V \(Windows Server Virtualization\), Citrix XenServer or other hypervisor technology](#). Esko has *not* officially certified ArtiosCAD for use in this environment, however, Esko does not prevent its use as long as the customer accepts responsibility for deployment and support of the environment.
  - Artioscad has been certified for [VMware Fusion v7](#). The customer may run later versions of his own accord on hardware and OS of his choosing, but Esko provides no warranty of the resulting combination.
  - [3D graphics cards...](#) newer computers often come with some form of switchable graphics technology. This means that there are two or more video cards that switch off doing rendering duties on the system. Because of this, it is entirely possible that ArtiosCAD will be run using the low end, power saving chip. This drastically lowers

performance, and may introduce issues when working within ArtiosCAD 3D. It is sometimes also possible that the current chip changes, which can lead to all sorts of stability issues. It is recommended that the user go to the control panel controlling the graphics cards (NVidia Control Panel or AMD Catalyst Control Center) and create a profile for ArtiosCAD so it will use the high end chip always.

A number of rendering issues with NVidia cards and openGL have been raised. Changes were made to what is believed to be an improvement in the error handling of newer NVidia cards particularly those with dual graphic cards.

- Since its inception, Artioscad has provided a [database schema](#) that has always been backwards compatible with previous versions of Artioscad and 3rd party applications. An ArtiosCAD enterprise edition has now been released and utilizes a new database backend (WebCenter). It is expected that the database functionality for the conventional ArtiosCAD edition will be frozen at its current level. New design functionality will continue to be added. It is expected that a single database edition will be created in the future.